



CLACKAMAS C O U N T Y

VOTERS' PAMPHLET MAY 20, 2014 PRIMARY ELECTION

Clackamas County
Elections Division
1710 Red Soils Ct., Ste. 100
Oregon City, OR 97045

www.clackamas.us/elections

503.655.8510

SHERRY HALL,
County Clerk

COUNTY VOTER

All information contained in this pamphlet has been assembled and printed by Clackamas County's Elections Division.

You will not vote on everything in this pamphlet, only those races and measures appearing on the Official Ballot in your Vote-By-Mail packet.

Candidate Statements, Measure Text, Explanatory Statements and Arguments are printed as filed – no spelling or grammatical corrections are made.

Your voted ballot must be received in our office, or in an official ballot drop box, by 8:00 p.m. on Election Day, **May 20, 2014**

CONTENTS

Letter from the County Clerk.....	3-2
Voting Instructions.....	3-3
Candidates	3-5
Measures / Arguments.....	3-16
Ballot Drop Sites.....	3-44

Please recycle this pamphlet.





CLACKAMAS COUNTY

Office of the County Clerk

SHERRY HALL
CLERK

1710 RED SOILS CT, SUITE 100
OREGON CITY, OR 97045
503.655.8510
FAX 503.650.5687

Dear Clackamas County Voter:

This Voters' Pamphlet contains information designed to assist you in voting: Candidates' statements, ballot titles, explanatory statements and arguments pertaining to local measures that appear on the May 20, 2014 Primary Election ballot in Clackamas County.

You will not vote on everything that appears in this pamphlet, only those candidate races and measures that appear on the Official Ballot in your Vote-By-Mail packet. In order to vote on a certain measure or race, you must be an active registered voter of the jurisdiction placing the measure on the ballot.

Your voted ballot must be received at an official ballot drop site or at the Elections Office, 1710 Red Soils Ct., Ste. 100, in Oregon City by 8:00 p.m. on election night in order to be tallied. Remember, the postmark on a mailed ballot does NOT count.

Official ballot drop sites are listed on Page 3-44 of this pamphlet. Indoor drop boxes will be available during regular business hours (and outdoor drop boxes are available 24 hours a day) beginning Thursday, May 1 until 8:00 p.m. on Tuesday, May 20, 2014.

Ballots will be delivered to households between Thursday, May 1 and Monday, May 5. Please contact us if you have not received a ballot by May 6.

If a ballot was delivered to your residence for someone who should no longer be receiving ballots at your address, please write "RETURN" on the envelope and place it back in your mailbox. If a ballot was sent to someone who has passed away, please write "DECEASED" on the envelope and place it back in your mailbox.

If you need assistance voting or have any questions about this particular election or the election process, please call the Elections Division at 503.655.8510.

Sincerely,

A handwritten signature in cursive script that reads "Sherry Hall".

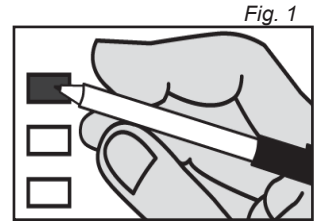
Sherry Hall
Clackamas County Clerk

Voting is as Easy as 1-2-3

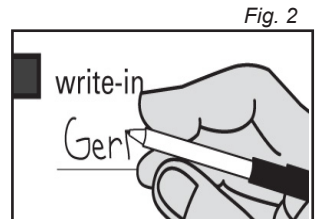
1

Vote your Official Ballot

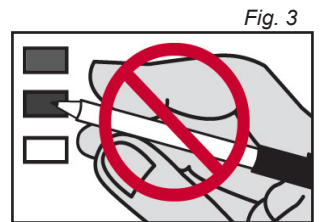
Locate the candidate or measure response (YES or NO) of your choice for each contest. To vote, you must completely darken the rectangle to the left of the response of your choice with black or blue ink. [Figure 1]



To vote for a candidate whose name does not appear on the Official Ballot, completely darken the rectangle to the left of the blank Write-in line provided for the office and fill in the blank line with the full name of the person you wish to vote for. [Figure 2]



Remember: If you vote for more than the number of candidates allowed for an office, or you vote both YES and NO on a measure, it is called an overvote, and your vote for that candidate or measure will not count. [Figure 3]



2

Review your Official Ballot

Ensure you have correctly marked your choice for each contest. Your official ballot may contain contests printed on both front and back. If so, remember to vote both sides!

If you lose your ballot, make an error on it or spoil it in any way, contact the Clackamas County Elections Division at **503.655.8510** to request a replacement ballot.

3

Return your Official Ballot

Place your voted Official Ballot in the Ballot Secrecy Envelope and seal it. Place the sealed secrecy envelope inside the Return Ballot Envelope (white with a colored edge) and seal it.

Remember: Read and sign the Voter's Statement on the Return Ballot Envelope. **Your ballot will not be counted if the Return Identification Envelope is not signed.**

By Mail: Attach sufficient first-class postage to the signed and sealed Return Ballot Envelope. **Mail it as soon as possible;** it must arrive at Clackamas County Elections Division no later than 8:00 p.m. on Tuesday, May 20, 2014. **Remember, the postmark does not count!**

In Person: Deliver the signed and sealed Return Ballot Envelope to any official ballot drop site (see list on page 3-44) no later than 8:00 p.m. on Tuesday, May 20, 2014. **Postage is not required if ballot is delivered to a drop site.**

**Do you have questions, or need assistance voting
due to permanent or temporary disability?**

Please call the Elections Division at 503.655.8510.

Table of Contents

Candidates *

County Commissioner, Position 2,	Page 3-5 to 3-6
County Commissioner, Position 5.....	Page 3-6 to 3-7
County Clerk.....	Page 3-7 to 3-9
County Treasurer.....	Page 3-9 to 3-10
Metro, Council President	Page 3-11
Metro, Council Auditor	Page 3-11
Metro, Council District 1	Page 3-12
Metro Council District 2	Page 3-12
City of Portland, Commissioner Position 2	Page 3-13 to 3-14
City of Portland, Commissioner Position 3	Page 3-14 to 3-15

Measures

City of Canby	Measure 3-436, Arguments	Page 3-16
City of Damascus	Measure 3-441, Arguments	Page 3-17 to 3-19
City of Damascus	Measure 3-444, Arguments	Page 3-20 to 3-23
City of Damascus	Measure 3-445	Page 3-24
City of Milwaukie.....	Measure 3-439, Arguments	Page 3-25 to 3-26
City of Milwaukie.....	Measure 3-440, Arguments	Page 3-27
City of Oregon City	Measure 3-435, Arguments	Page 3-28 to 3-31
City of Oregon City	Measure 3-437, Map	Page 3-31 to 3-32
City of Portland	Measure 26-156, Arguments	Page 3-33
Aurora Rural Fire Protection District.....	Measure 24-367, Arguments	Page 3-34 to 3-35
Molalla Rural Fire Protection District	Measure 3-442, Arguments	Page 3-36 to 3-37
Molalla Rural Fire Protection District	Measure 3-443	Page 3-38
Tualatin Valley Fire & Rescue.....	Measure 34-211, Arguments	Page 3-39 to 3-43

Maps

City of Oregon City	Measure 3-437 Map of Annexation Area	Page 3-32
---------------------------	--	-----------

Miscellaneous

Letter from the Clerk.....	Page 3-2
Voting Instructions	Page 3-3
Official Ballot Drop Sites.....	Page 3-44

** Not all candidates choose to purchase space in the Voters' Pamphlet.
For the complete list of candidates who have filed for office, visit <http://clackamas.us/elections>.*

Candidates appear in the order in which they will appear on the ballot as instructed by the Secretary of State. Arguments in support of or in opposition to a measure appear in the order in which each type of argument was received by the County Elections Division.

Information provided in candidates' statements has not been verified for accuracy by the county.

Clackamas County Commissioner, Position 2



Rick Best

Occupation: Senior Electronic Repair

Occupational Background: U.S. Army Retired (2012)

Educational Background: Vocational Village High School Portland OR, 12, Diploma; Clackamas Community College, Continual Education, Accounting; Army Advance Management Course, Certificate; Army Contracting Officer Representative, Certificate

Prior Governmental Experience: U.S. Army 23 years of Service, Veteran of Iraq and Afghanistan.

CANDIDATE STATEMENT

Clackamas County needs a commissioner to improve its state of affairs, not a commissioner who will bankrupt it. Our County Leadership's current plan is to spend and waste our money on superfluous projects. We all know what happens next...money goes down the drain. Then the county reaches into our pockets to **take more money**. Clackamas County does not need wasteful spending but a balanced economic solution that preserves our resources while creating sustainable economic growth. In order to do so, citizen input is vital. Therefore, I will have an open door policy for community members to converse face-to-face with their representative.

My pledge to you:

- Not to take a pay raise of any sort.
- Vote to limit the growth of Government.
- Protect owner's property rights.
- Reduce Government expenses while protecting vital services.
- Attract new business by reducing fees and regulations.
- Not to discriminate against small business over large corporations.

Ask yourself:

- Can you find work to stay in Clackamas County?
- What has been accomplished to attract new business to Clackamas County?
- Has the situation improved with the current commissioners?
- Do the current commissioners receive and listen to citizen input?

This election vote for me who will represent Clackamas County.

Thank you,

Rick

(This information furnished by Rick Best)

The above information has not been verified for accuracy by the county.

Clackamas County Commissioner, Position 2



Karen Bowerman

Occupation: Business educator and community volunteer

Occupational Background: Dean, College of Business and Public Administration; Dean Emeritus, California State University, San Bernardino; author on leadership; manager of finance company

Educational Background: Ph.D. in Administration, Texas A&M University; M.A. Kansas University; B.A. Wichita State University

Prior Governmental Experience: City Councilor, Lake Oswego; District Export Council (U.S. Secretary of Commerce appointee); Executive Director, Office of Texas Governor, Commission on Status of Women

CANDIDATE STATEMENT

Personal: Married to husband Earl for 36 years; four children

Time Is Up

Clackamas County is lowest in the region for jobs recovery, and numbers in our labor force are falling. **We can't wait any longer for overdue promises to be fulfilled.** Our county has enormous potential. Significant decisions by a strong team of county commissioners will make a meaningful difference. But the status quo is leading Clackamas County nowhere fast; **it's time for new leadership.**

A New Professionalism

I'm running for county commissioner to provide authentic leadership and commitment voters deserve. I bring **outstanding skills and experience** and I will get the job done. My unique combination of business education and public sector experience will add a **new professionalism** to the county board.

Public Priorities

- Public safety, roads and road maintenance, social services, low taxes/fees, and resistance to additional debt.
- Meaningful progress with changes that enhance opportunity, secure your right to vote, and guarantee that you will **"have a say in what you pay."**
- Veterans' programs
- A healthy climate for economic growth, businesses and private jobs.

"Karen Bowerman will promote a strong and healthy environment for small and large businesses and has the unique proven ability to streamline government programs."

-- Tyler Smith, Rural Business Attorneys, Canby

"Karen has proven that she votes and works the right way on diverse matters such as respect for property rights, support for the family farm and small business, while remaining in contact with residents about concerns that affect their lives."

-- State Senator Larry George

www.KarenBowerman.com

(This information furnished by Karen Bowerman)

The above information has not been verified for accuracy by the county.

Clackamas County Commissioner, Position 2



Paul Savas

Occupation: Clackamas County Commissioner

Occupational Background: Small Business Owner 25 Years, Aerospace Machinist

Educational Background: Oregon State University Extension Service, Certificate, County College; Cypress College, AA; Western High School, Diploma

Prior Governmental Experience: Clackamas County Commissioner, Oak Lodge Sanitary Director, Oak

Lodge Water Commissioner

CANDIDATE STATEMENT

Vote Paul Savas

Local small business owner Paul Savas is a thoughtful leader with integrity, common sense, and a demonstrated ability to build and maintain relationships to benefit Clackamas County. **Paul has a clear vision for the future:**

- A strong local economy with quality jobs
- Vibrant businesses expanding and hiring
- Roads without traffic congestion
- Flourishing natural resources and environment
- Safe neighborhoods
- Property rights protected
- Veterans and seniors living securely

Paul has a **proven track record** of working with community leaders and business owners to enact our shared vision of a thriving Clackamas County.

“Paul saved the ratepayers \$20 million on our wastewater treatment plant project.” – Punky Scott, Bomber Restaurant

“Thanks to Paul’s dynamic ability to work collaboratively on our River Front Park project, **our downtown will be more vibrant than ever.** Help make Clackamas County a place to be proud of, please re-elect Paul.” – Milwaukie Mayor Jeremy Ferguson

“Savas’ steadfast leadership made it possible to break ground on key road and highway projects like the Sunrise Corridor. **His common sense approach will help reduce traffic congestion.** I am proudly supporting Paul’s re-election.” – Happy Valley Mayor Lori DeRemer

“Commissioner **Savas consistently looks out for our needs in rural Clackamas County.** Please join me in voting for Paul.” – Sandy Mayor Bill King

“When it comes to working with State Legislators for the benefit of Clackamas County, **there is no one better than Paul Savas.**” – Senator Chuck Thomsen

Endorsements:

State Representative Mark Johnson

Martha Schrader, Commissioner

John Kovash, West Linn Mayor

Gladstone Mayor Wade Byers

Estacada Mayor Brent Dodrill

Lake Oswego Councilor Donna Jordan

Larry Sowa Ernie Platt

Clackamas County Peace Officer’s Association

Professional Firefighters of Clackamas County, IAFF Local 1159

Full list at: www.electpaulsavas.com

(This information furnished by Paul Savas)

The above information has not been verified for accuracy by the county.

Clackamas County Commissioner, Position 5



Steve Bates

Occupation: President - Oregon Fire Equipment Co.; Managing Partner - Stephen L. Bates Enterprises, LLC

Occupational Background: President - Oregon Fire Equipment Dealers Association; Elder - Damascus Community Church; Field Sales Supervisor - Western Fire Equipment; District Marketing Manager - Curtis Industries

Educational Background: Barstow High School, 12, Diploma

Prior Governmental Experience: Chair, Boring Community Planning Organization; Founder - Boring, Oregon Foundation; Founder - Boring, Oregon Business Coalition

CANDIDATE STATEMENT

Our county needs real progress and re-electing the same people and expecting different results won’t work. We can’t wait any longer.

Progress will never come for Clackamas County if commissioners follow in the footsteps of Portland decision-makers.

My opponent claims his failed approach is stabilizing. It isn’t. It’s stagnating.

We trail Multnomah and Washington Counties for jobs recovered and weekly wages - on his watch.

Our county is unique and full of potential for jobs and new businesses.

I will **commit to a new path** that begins to achieve our great potential.

Clackamas County can be a regional leader, but it’s time to **focus on our strengths and focus on the basics:** roads, public safety, clean water, vital social services, and a flourishing economy so we all have opportunities to succeed.

This will take strong leaders who **champion the real priorities of Clackamas County voters.**

No more crony deals or mega-projects to suit outside interests.

My opponent has been on the wrong side of county voters every step of the way, supporting Milwaukie Light Rail, Sellwood Bridge funding, and continued debt through Urban Renewal -- despite voter rejection of all these policies.

His approach has resulted in the worst jobs recovery in the region.

I will engage all our regional partners in policies that promote job growth in Clackamas County. **My alliance will be with you, the people of Clackamas County** so you have the representation you deserve. If that sometimes requires a public vote to clarify your views and to guide commissioners, so be it.

Vote for real progress, elect Steve Bates!

(This information furnished by Friends of Steve Bates Committee)

The above information has not been verified for accuracy by the county.

Clackamas County Commissioner, Position 5



Jim Bernard

Occupation: Small business owner; Clackamas County Commissioner

Occupational Background: Bernard's Garage

Educational Background: La Salle High; Portland State University, B.S.

Prior Governmental Experience: Milwaukie Mayor

CANDIDATE STATEMENT

FISCALLY RESPONSIBLE LEADERSHIP

When Jim Bernard purchased the family business, his father taught him to succeed by working hard and “**watching the money.**” As County Commissioner Jim:

- Created the County's first Audit Committee, **making local government more fiscally responsible;**
- Reduced red tape and streamlined services for small businesses;
- Cut waste to make government more efficient and accountable to us.

PROTECTING OUR FAMILIES AND NEIGHBORHOODS

P.O.L.I.C.E. PAC endorsed Jim because they know he's fighting to keep our families and neighborhoods safe. As County Commissioner Jim:

- Provided additional funding for community corrections, ensuring that **Clackamas is one of Oregon's safest counties;**
- Took a common sense approach to crime by addressing its root causes, opening up mental health and addiction treatment clinics for at-risk persons;
- Funded the creation of the Family Justice Center so battered women and children can get help in a safe environment.

IMPROVING THE ECONOMY, CREATING GOOD JOBS

As former Mayor of Milwaukie, Jim created vibrant public-private partnerships to revitalize neighborhoods and created good jobs by bringing millions of dollars to the city. As County Commissioner, Jim is helping us thrive by:

- Supporting high-speed Internet to underserved areas, **saving schools money,** and helping businesses compete in the global economy;
- Pushing for more job training and placement programs;
- Creating the County's first veterans committee to help Clackamas veterans with their employment and health needs.

Endorsers:

Professional Firefighters of Clackamas County, IAFF Local 1159
Wade Byers, Gladstone Mayor
Lori DeRemer, Happy Valley Mayor
Mark Gamba, Milwaukie City Council
Darlene Hooley, Congresswoman
Tom Hughes, Metro Council President
Bill King, Sandy Mayor
Tim Knapp, Wilsonville Mayor
John Kovash, West Linn Mayor
Ann Lininger, State Representative
Doug Neeley, Oregon City Mayor
Martha Schrader, Clackamas County Commissioner

VoteJimBernard.com

(This information furnished by Friends of Jim Bernard)

The above information has not been verified for accuracy by the county.

Clackamas County Clerk



Mark Meek

Occupation: Principal Broker/
Owner Markram Properties, LLC

Occupational Background: Owner/Operator of Mark's Hawthorne Pub; Owner/Developer of Mt Tabor Pub; US Air Force (Security Police/Personnel Director)

Educational Background: Park College, BS, Management/CIS

Prior Governmental Experience: Clackamas County Planning Commission; City of Milwaukie

Design/Development Task Force

CANDIDATE STATEMENT

FAMILY: Married to my wife Cindy for 29 years, raising our two sons, Mark and Jacob. Clackamas County resident for 20 years. Coached Youth Sports teams for over 17 years. Member, Christ The King Church and Choir.

MARK MEEK SHOULD BE OUR NEXT COUNTY CLERK

We need new direction for our Clackamas County Clerk's office.

Mark Meek will be a positive change agent.

He can restore integrity, trust, discipline and competence with:

- Proven skill in attention to detail, a record of absolute honesty, and results oriented.
- Experience in working with county government. He will budget and manage your tax dollars efficiently.
- The belief that protecting the integrity of our **voting** process is **critical!**

Mark Meek brings energy and focus to public service.

- As a small business owner, he professionally manages a detail-oriented operation daily.
- A long-time resident and planning commissioner, he is respected in the business community and has served on volunteer boards and commissions.
- As a family man who has raised his children in Clackamas County, he knows our community and its needs.

No other candidate is better suited for this important job.

JOIN US IN SUPPORTING MARK MEEK FOR COUNTY CLERK

Tammy Stevens, Beaver Creek Naomi Angier, Activist, Milwaukie
Steve Lucas, Owner-Oregon Realty, Oregon City
Cyndi Lewis-Wolfram, Clackamas CPO Chair
Tom Peterson, Clackamas County Planning Commission Chair, Milwaukie

G. Michael Lueck, MSG (Ret.), Milwaukie
Dave Hunt, former State Rep/Speaker of the House, Gladstone
Lloyd Peterson, Willamette View Resident

Go to www.electmarkmeek.com for a full list of endorsements

ELECT MARK MEEK AS YOUR NEXT COUNTY CLERK

(This information furnished by Mark Meek)

The above information has not been verified for accuracy by the county.

Clackamas County Clerk



Sherry Hall

Occupation: Clackamas County Clerk

Occupational Background: Clackamas County Clerk; Clackamas County District Attorney's Office; Clackamas County Clerk's Office, Recording Division, Deputy Clerk; Title Insurance Company; DUII Victim Impact Panel

Educational Background: Auburn University - CERA Certificate, Certified Election Registration Administrator,

Elections; Eastern Oregon College, Attended; Rex Putnam High School, 12, Diploma

Prior Governmental Experience: Clackamas County Clerk 2003 to present; Clackamas County District Attorney's Office - 11 years; Clackamas County Clerk's Office, Recording Division, Deputy Clerk - 5 years; Coordinator DUII Victim Impact Panel - 2 years

CANDIDATE STATEMENT

A privately-conducted Performance Audit revealed:

"The Clackamas County Clerk's Office is well run."

Here's why:

- **Implementing new technologies** has achieved higher productivity.
- Additional modernization has brought **efficiencies and cost savings**.
- **Elections and Recording Departments** have been consolidated making the Clerk's office a **citizen's one-stop shop**.
- Recording, Elections, Board of Property Tax Appeals, marriage licensing and passports, are **performing well**.
- **Records Management** is managing information today for accessibility tomorrow.
- **Current generation ballot tally equipment** and processes makes ballot handling and counting very efficient.

The Clerk's Office is as top notch as any in the State with some of the most modern equipment and efficient processing procedures available.

Frugal budget management has **returned thousands of tax dollars** to the County General Fund at the end of each fiscal year.

Accuracy – Integrity – Excellence

"I will continue to keep politics out of the Clerk's office and protect your vote."

I have lived, worked, raised a family and volunteered in Clackamas County most of my life. I believe the County Clerk's office should be efficient, courteous, accurate, convenient and people friendly.

Community Involvement: Church youth volunteer; Kiwanis; Gladstone Education Foundation Board of Directors; Crime victim advocate volunteer; Oregon Trail Pageant Board of Directors

Dear Voter:

It's been my privilege to serve as your County Clerk. It would be an honor to continue serving you for the next four years. I ask for your vote.

Thank you!

I welcome your questions and comments: 503-313-7161
hallforclerk@aol.com

VOTE SHERRY HALL FOR CLACKAMAS COUNTY CLERK

(This information furnished by Friends of Sherry Hall)

The above information has not been verified for accuracy by the county.

Clackamas County Clerk



David Robinson

Occupation: Business Owner; Commander, US Navy Reserve; Engineer

Occupational Background: Leader and manager of large service and maintenance organizations; Leader of US Government humanitarian and disaster relief in Africa and the Pacific; Teacher at the US Naval Academy; 20+ year Navy Officer and Enlisted Marine veteran

Educational Background: MBA, Willamette University; MS

Engineering, Oregon State University; BS Engineering, US Naval Academy

Prior Governmental Experience: Navy Commander; Director of Civil-Military Operations Horn of Africa; Department Director, City of Hillsboro; Program and Project Director, US Government

CANDIDATE STATEMENT

David Robinson

The Proven Leader Clackamas needs to address the challenges facing the Clerk's Office

I look forward to bringing my experience successfully managing large organizations and complex projects to this critical Clackamas County position, and address the issues and problems that have troubled this office for so long. I will work with staff to build a more professional and effective organization, and to provide the service Clackamas County voters deserve.

Experienced and Competent Leader

Large Organization Leadership: Led a 250 person organization executing \$250 million/year of work. Led the reorganization that increased productivity and saved millions of dollars.

Complex Project Success: Key Leader in coordinating the movement of people and millions of dollars of Typhoon relief supplies to alleviate the suffering of the Philippine people and rebuild their communities.

Small Business Owner and Leader: Built, launched, and ran businesses providing business and compliance support services, construction consulting, and internet social marketing services.

Local newspapers agree it is time for a new Clerk.

"We are tired of problems repeatedly happening with Clackamas County elections" and "...**clearly it's time to make a change.**" *Clackamas Review, Oregon City News, West Linn Tidings, Lake Oswego Review, 11/14/2012 and 11/21/2012.*

Business leaders and elected officials endorse David

Local and State Official Endorsers: County Commissioner **Jim Bernard**; State Labor Commissioner **Brad Avakian**.

Local Business Leader Endorsements: Jim Morton, Owner/Manager, Commercial Property Management; Karl Dinger, Co-Owner, Terra Vina Wines.

David Robinson

Restoring Competence and Integrity to Clackamas County Elections

www.votedavidrobinson.com

(This information furnished by David Robinson)

The above information has not been verified for accuracy by the county.

Clackamas County Clerk



Linda Neace

Occupation: Small Business Owner

Occupational Background: Sales and Marketing Hospitality Industry; Retail business operator, Certification for Grant Writing

Educational Background: Esthetician Degree

Prior Governmental Experience: Precinct Committee Person, Clackamas Women's Services Committee/Public Relations, West Linn Economic Development

Committee, National Alliance for the Mentally Ill (NAMI)-Legislative Liaison

CANDIDATE STATEMENT

Community Involvement includes: President, West Linn Chamber of Commerce, Soroptimist Past President, Milwaukie Elks, Clackamas County Business Alliance.

Elect Linda Neace for Clackamas County Clerk!

Clackamas County must return our County Clerk's office to the first class "customer service" agency that citizens deserve. As your County Clerk, I will achieve this objective by managing tasks professionally and increasing accountability and transparency!

Voters can count upon me to serve every citizen of the county and maintain an ethical approach to every decision brought before me.

My first term goals include:

- Administering fair, timely, and transparent elections;
- Implementing, internal control/loss prevention through city/county managers and
- Through innovation and hard work, deliver more cost effective election and recording

I'm qualified to meet these goals and committed to using my skills and experience to represent and serve the citizens of Clackamas County honestly and effectively. I promise to listen to your concerns and issues fairly and review facts based on the law.

I will do my part to work with other elected officials and managers as a team member to provide the best services possible to the citizens of Clackamas County.

You can count on Linda Neace to do the research and find the right solutions for the problems facing voters in Clackamas County. The citizens of Clackamas County have experienced costly mistakes that have jeopardized our election system. Linda will work hard to return the Clerk's office to one that will make you proud.

Vote for honesty, integrity and transparency!

VOTE LINDA NEACE FOR COUNTY CLERK

Linda is supported by people we trust:

Thomas Frank West Linn City Council	Carolyn L Oakley Former State Representative
Paul R Solomon Fraud Examiner	Mark Handris Handris Realty

Linda Neace gets my vote for County Clerk

(This information furnished by Linda Neace for Clackamas County Clerk)

The above information has not been verified for accuracy by the county.

Clackamas County Treasurer



James Gleason

Occupation: Investments

Occupational Background: Sr. VP Controller - Thrifty PayLess Drug Stores; Sr. Financial Analyst - Nike, Inc.; Sr. Accountant - Price Waterhouse CPA's

Educational Background: Oregon State University, BS, Accounting; Tigard High School, 12

Prior Governmental Experience: Wilsonville Transportation Committee; Co-founder Wilsonville Innovative Transportation

Association (precursor to SMART)

CANDIDATE STATEMENT

Qualifications:

1. Certified Public Accountant
2. Co-managed \$200 million pension fund.
3. Seasoned senior financial executive.
4. Over 30 years investing experience.

Clackamas County Investments Earned Abysmal 0.29% in 2013

The Treasurer's primary responsibility is investment of the County's cash which averages over \$270 million. Net investment income returned only 0.29% and many investments were in risky banks far beyond the FDIC insurance thresholds.

Incumbent Treasurer Has Run Unopposed for 15 Years

The current County Treasurer, Shari Anderson, has served nearly 15 years and has never faced a general election opponent. Ms. Anderson earns total compensation over \$160,000 per year and runs her personal CPA business on the side while the County Treasurer's office is open only 4 days per week. Ms. Anderson makes it difficult to obtain basic financial information and asks that a time consuming public records request form be completed.

It's time for a change and fresh perspective for Clackamas County Treasury operations.

My Plan if Elected

1. I'm highly confident I can invest the County's investments in a prudent manner that yields at least 1.0% higher than current while enhancing safety and liquidity. This would earn the County at least \$2.7 million more per year.
2. As the County's top elected financial officer, I'll regularly communicate all relevant financial information in an easily understood format.
3. I'll aggressively seek cost savings and efficiencies throughout Clackamas County.
4. I'll cut my pay 15% from incumbent's total compensation and restore a 5 day work week.

No Endorsements or Campaign Contributions

I believe money and favors corrupt the political process; I will not accept any endorsements, cash nor any other form of assistance.

(This information furnished by James Gleason)

The above information has not been verified for accuracy by the county.

Clackamas County Treasurer



Shari Anderson

Occupation: Clackamas County Treasurer; Certified Public Accountant; Certified Internal Auditor; Certified Fraud Examiner

Occupational Background: Shari Anderson, CPA; Lang Cohen Barrett & Davis, CPAs

Educational Background: Rex Putnam High School, 12; Portland State University, BS, Economics; Portland State University, Post Baccalaureate, Accounting

Prior Governmental Experience:

Elected Clackamas County Treasurer, 1999 to current

CANDIDATE STATEMENT

CASH MANAGEMENT AND INVESTMENT

Shari Anderson oversees the county's cash and investment portfolio. Funds are managed to ensure that the county's portfolio is invested in the highest quality and safest investments allowed under Oregon law. In 2000 Shari Anderson established a community banking program to promote county investment in local and regional banks in Oregon. Currently the county has nearly \$30 million dollars in these banks, providing solid investments for the County as well as funds that can be used in our local community.

EFFICIENCIES OF OPERATIONS

Shari led the Treasurer's office to streamline and improve many accounting processes using LEAN principles. New banking products have been introduced, including online payments and virtual terminals. More choices mean more convenience for Clackamas County residents.

ETHICAL BUSINESS PRACTICES AND COMMITMENT TO SERVICE

Shari Anderson established and administers the county's internal fraud hotline. The hotline allows employees and volunteers to report suspected fraud and abuse. Shari was awarded the 2008 Oregon Municipal Finance Officers Association award for Outstanding Contribution to Public Finance.

A PROVEN LEADER AND TRUSTED PROFESSIONAL

Shari Anderson is a life-long Clackamas County resident. She is the current president of the Rotary Club of Oregon City, serves on the Gladstone School District audit committee and is a member of the Oregon City Chamber of Commerce. Shari is a volunteer with the Clackamas County Money Management Program, monitoring accounts for our most vulnerable county residents. Professionally she is a member of the Oregon Society of Certified Public Accountants, the Oregon Municipal Finance Officers Association, and is the current president of the Oregon Association of County Treasurers and Finance Officers. Shari lives with her husband and daughters on their family farm in Oregon City.

(This information furnished by Shari Anderson)

The above information has not been verified for accuracy by the county.

Clackamas County Treasurer



Myhanh Best

Occupation: NA

Occupational Background: Programmer, Computing Technologies, Inc.

Educational Background: Marie Curie High School, Vietnam, 12, Diploma; Portland Community College, AA, Business Administration; Portland State University, BA, Bus. Information Systems

Prior Governmental Experience: NA

CANDIDATE STATEMENT

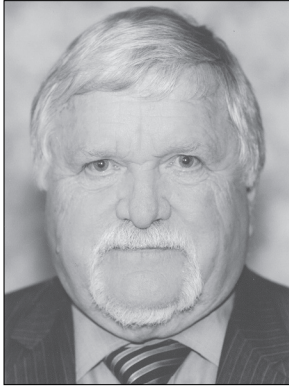
I'm a hard working and responsible person. I have successfully managed and invested my assets, so I am debt free. I want Clackamas to become a debt free County also.

As Clackamas County Treasurer, I will listen and work with County Personnel and Treasurer Staff to reduce the current deficit. We shall do so by putting Clackamas County on a fiscally accountable and effective budget, by managing and safe investing of taxpayers' money on behalf of Clackamas County.

(This information furnished by Myhanh Best)

The above information has not been verified for accuracy by the county.

Metro Council President



Tom Hughes

Occupation: Metro Council President

Occupational Background: High School teacher, 30 years

Educational Background: Hillsboro High; University of Oregon (B.S.); University of Arizona (M.A.); Portland State University (Teaching certificate)

Prior Governmental Experience: Mayor of Hillsboro; Hillsboro City Council

CANDIDATE STATEMENT

Dear Voter,

Four years ago, I ran to focus on jobs and strengthening our economy and I'm proud of Metro's accomplishments during my first term.

Jobs and the Economy: Good-paying jobs and an improving economy are my top priorities. I've fought to bring more businesses to our community through the Greater Portland Export Initiative Council, and worked to create job-friendly initiatives through the region's Economic Development District. And it's paid off. Today, unemployment is at a five-year low in our region.

Restoring and Protecting Nature: I led the successful effort to pass Measure 26-152 to protect and restore thousands of acres of natural areas and rivers, improving habitat and water quality.

Further the Zoo's Mission of Conservation: We moved forward with a voter-approved construction program to dramatically improve animal habitat including our elephants.

I am asking for your vote for a last term. This is the greatest place in the world to live. Our job is to preserve it for our children.

Thank you,
Tom

RE-ELECT TOM HUGHES

"Our region is lucky to have Tom at the helm. As someone who served on the council under his leadership, I'm glad to vote for him again."

Governor Barbara Roberts

"Tom led the Metro Natural Areas levy last year to fund local nonprofits critical conservation projects around our region."

Shirley Craddick, Metro Councilor

"Tom leads with common sense, wisdom, and a sense of humor."

Carlotta Collette, Metro Councilor

"Tom understands our region is stronger when we work together for jobs, transportation, and land use planning."

Martha Schrader, Clackamas County Commissioner

AFSCME Local 3580 and 3580-1
Oregon League of Conservation
Voters

More endorsements at
VoteTomHughes.com

Oregon AFSCME
Northwest Oregon Labor
Council
Learn about Metro at
oregonmetro.gov

(This information furnished by Tom Hughes)

The above information has not been verified for accuracy by the county.

Metro Council Auditor



Brian Evans

Occupation: Principal Management Auditor, Metro

Occupational Background: Certified Internal Auditor and Certified Government Auditing Professional, six years experience auditing

Educational Background: Masters in Public Affairs, University of Wisconsin-Madison; BA, International Affairs and Economics, Lewis and Clark College

Prior Governmental Experience: Senior Management Auditor, Metro; Senior Economist, Oregon Economic and Community Development Department; Research Analyst, Department of Administrative Services; AmeriCorps VISTA

CANDIDATE STATEMENT

BRIAN EVANS knows how special Oregon is as a place to live and work. That is the reason he makes it his home and that is why he is running for Metro Auditor. He and his wife, Jill, live in southeast Portland.

UNDERSTANDS GOVERNMENT AUDITING

BRIAN EVANS has the skills and leadership to improve Metro. For the past six years, he completed audits of almost every aspect of Metro's operations. He led trainings for fellow auditors and presented his work at national and regional conferences. Two of the audits he worked on received national awards for excellence from the Association of Local Government Auditors.

COMMITMENT TO IMPROVE GOVERNMENT

Pushing government to change is not always easy but it is a critical responsibility of auditors. BRIAN EVANS takes the citizen point of view to improve services and ensure accountability for taxpayers. He will bring integrity, independence and continuous improvement to the Metro Auditor's Office.

EXPERIENCE AND KNOWLEDGE TO BE SUCCESSFUL

BRIAN EVANS brings strong analytical skills and broad experiences that are well suited to the challenges facing our region. Prior to auditing, he worked on small business development programs and conducted analysis to inform economic development efforts. This helped him understand how the right steps by government can contribute to the success of the region.

"I am pleased that Brian is willing to serve the Metro region. He has the qualifications and experience necessary to be an excellent Metro Auditor."

Suzanne Flynn, Metro Auditor

VOTE BRIAN EVANS FOR METRO AUDITOR

For more information and a complete list of endorsements see:

www.brianevans.squarespace.com

(This information furnished by Friends of Brian Evans)

The above information has not been verified for accuracy by the county.

Metro Council District 1



Shirley Craddick

Occupation: Metro Councilor,
District 1 2011-Present

Occupational Background:
Gresham City Councilor 2005-
2010, Health Researcher, Author,
Kaiser Permanente

Educational Background:
University of Southern California,
Master of Health Administration;
Oregon State University, BS

Prior Governmental Experience:
Gresham Representative, Regional
Water Providers Consortium;
Liaison, Mt. Hood Cable
Regulatory Commission; Alternate,

Metro Policy Advisory Committee

CANDIDATE STATEMENT

Accomplishments:

Natural Areas Restoration – Restoring 16,000 acres of natural areas and making grants available for cities and non-profits.

Industrial Lands – Created an industrial lands inventory with regional partners, identified barriers to development and actions to overcome these barriers.

East Metro Connection Plan – Identified transportation challenges and investments that advance economic development in the east part of Metro region.

Top Priorities:

Job Creation – Removing the barriers interfering with making industrial and employment lands inside the Urban Growth Boundary available to development.

Environment – Finding permanent solutions towards protection, restoration and maintenance of our natural areas; solutions benefiting both local jurisdictions and the metro region.

Transportation – Improving safety, reducing congestion and advancing economic development in the east region.

Dear Voters,

I'm honored to have served District 1 for the last three years. I will continue to represent your interests on the Metro Council and encourage you, the voters, to contact me with any issue you may have.

- Shirley Craddick

Endorsements:

Home Builders Association of Metro Portland
Northwest Oregon Labor Council
OLCV
Sierra Club

Mayors:

Shane Bemis - Gresham
Doug Daoust - Troutdale
Mike Weatherby - Fairview
Patricia Smith - Wood Village

Tom Hughes, Metro President
Martha Schrader, Clackamas County Commissioner
Jim Bernard, Clackamas County Commissioner
Randy Shannon, Damascus City Councilor
Jim DeYoung, Damascus City Councilor
Representative Greg Matthews
Senator Chuck Thomsen
Senator Rod Monroe

"Shirley works hard to represent the people of her Metro district, and is a strong advocate for the region." -Gresham Mayor Shane Bemis

"Shirley is committed to ensuring family-wage jobs throughout our region. She gives the east side a voice on the Metro Council."
-Bess Wills, General Manager, Gresham Ford

See a complete list of endorsements at www.VoteShirleyCraddick.com
(This information furnished by Shirley Craddick for Metro Councilor)

The above information has not been verified for accuracy by the county.

Metro Council District 2



Carlotta Collette

Occupation: Metro Councilor

Occupational Background:
Collette Communications (1999-
2007); Northwest Power Planning
Council (1984-1998); Rain
Magazine (1979-1983)

Educational Background:
Marylhurst University, BA

Prior Governmental Experience:
Milwaukie City Council; Clackamas
Community College Board of
Education; Clackamas County
Business Alliance Board;

Clackamas County Coordinating Committee Co-Chair; Joint
Policy Advisory Committee on Transportation Chair

CANDIDATE STATEMENT

I have been a member of the Metro Council since 2007, serving the cities and neighborhoods of urban Clackamas County and a portion of Southwest Portland. I have worked to bring people across our region, and especially in my district, together to solve major problems and take advantage of big opportunities. I'm committed to revitalizing and maintaining our communities, improving our transportation system, continuing to purchase and restore important natural areas, and through actions like these, create jobs in our region.

In seeking endorsements for my re-election, I looked to people I work with, people I work for, and people and groups I admire and whose respect I am honored to have. I wanted especially the endorsements of the mayors of the cities in my district, and they came through. I've listed key endorsements below, but the full list is available at my web site: www.carlottacollette.com

Governor Barbara Roberts
Representative Carolyn Tomei
NW Oregon Labor Council
AFSCME Local 3580 and 3580-1
Oregonians for Affordable Housing
Oregon League of Conservation Voters
Gladstone Mayor Wade Byers
Happy Valley Mayor Lori DeRemer
Lake Oswego Mayor Kent Studebaker
Milwaukie Mayor Jeremy Ferguson
Oregon City Mayor Doug Neeley
Portland Mayor Charlie Hales
Rivergrove Mayor Heather Kibbey
West Linn Mayor John Kovash

(This information furnished by Carlotta Collette)

The above information has not been verified for accuracy by the county.

City of Portland Commissioner, Position 2



Sharon Maxwell

Occupation: Construction
General Contractor

Occupational Background:
Carpenter; Sprinkler Fitter

Educational Background:
Associate General Studies PCC
2004; Carpenters Certificate 1993;
Business Administration Degree
Warner Pacific expected April
2015; Continuing Education in
Construction Industry practices
and Standards; LEED Green/
Stormwater Certified with City of
Portland

Prior Governmental Experience: Committees Business
Development Minority Evaluator Program-City of Portland;
Planning and Sustainability Group; Municipal construction
contracts

CANDIDATE STATEMENT

"Sharon will bring the experiences of everyday working people
and those who have been left-out to City Council. It's time for a
reflective City Council that shows that we value all citizens that
live in the city." Nicholas Caleb

"Sharon knows we've fallen short and can do better for our
families and community. We must have a shared community
value and Sharon will work hard for good quality of life." Anderson
DuBoise Jr.

"I believe Sharon will represent all of the people of the City of
Portland." Lynn Mangum, AFSCME 88 member

Stepping up Community Participation to the Next Level

Monitor, audit, create policy and procedures, stay informed,
observe public administration and keep the people involved with
complete transparency for how decisions are made.

Meet with people and seek to understand their grievances,
issues, concerns and to work with them to find the best solutions.

Bringing together police and the community for a new culture of
cooperation and shared values.

"Sharon will collaborate, bring people together and be there to
find solutions." Gage Reeves

"I worked for Sharon through the Union local #10 for 7-10 years.
As the President of Peninsula little League, and through the
Summer Youth Jobs program she founded, Sharon really cares
about what is going on in the community and neighborhoods. I
know that Sharon cares and her concern is real. She makes it
happen, doing it right the first time and in a timely manner. She
has my VOTE!" Michael McConnell

I pledge to work for you and with you as the citizens of Portland.
Please vote for me, Sharon Maxwell.

<http://sharonmaxwellforportland.org>

(This information furnished by Sharon Maxwell)

The above information has not been verified for accuracy by the county.

City of Portland Commissioner, Position 2



Michael Durrow

Occupation: Activist

Occupational Background:
Photographer, Independent
Software Engineer, Network
Engineer, Realtor

Educational Background:
Portland Community College,
Reed College, Portland State
University

Prior Governmental Experience:
Precinct Committee-person
1992-Present, Grant Developer,
Portland Development

Commission 2002, Member and Volunteer "Art on Alberta,"
Albina-Killingsworth Safety Committee-person PCC-Cascade
2010-'13

CANDIDATE STATEMENT

I'm not a politician. I believe in cooperation, compromise and
consensus.

I've got specific plans to address the current and future needs
of Portland. More importantly, I have plans to PAY for those
programs.

Amend The City Charter

1. Incorporate The Citizen Review Board and Internal Police
Review, under The City Auditor.
2. Incorporate City Council authority to dismiss The Police
Chief without cause.
3. Require a Coroner's inquest for any police related death.

Implement Technology

1. Apply existing technology to make The Portland Water
Bureau more efficient to stabilize and reduce costs and
rates.
2. Apply existing technology to assess road repair/construction
prioritization, coordination and scheduling.

Transportation

1. Enact a Vehicle Mileage Tax rather than increase the gas tax
to compensate for lost revenue, due to hybrids, electric cars
and fuel efficiency.
2. Place bike lanes on parallel streets. Limit some residential
streets to non-motorized vehicles and allow local access
only. This will improve traffic flow, limit disruption to
commerce and save lives.
3. To address citizen concerns regarding the inequity of gas tax
money used for bicycle lanes: I propose a 1% surcharge on
new non-motorized vehicles, parts and equipment. These
funds would be used exclusively for the construction of bike
lanes and other amenities.

I also support an increase in the minimum wage to 11.00 an hour.
A 2013 study by the Center of Economic Policy Research
indicated, "...an increase in the minimum wage would have no
discernible effect on employment." This action would have a
measurable impact on the problem of homelessness and hunger.
Cast a vote for the future. Portland belongs to you.

(This information furnished by Michael Durrow for Portland)

The above information has not been verified for accuracy by the county.

City of Portland Commissioner, Position 2



Nick Fish

Occupation: Portland City Commissioner

Occupational Background: Civil rights attorney - defending employees against illegal firing and discrimination; host, public affairs show

Educational Background: Northeastern Law School; Harvard

Prior Governmental Experience: Led Portland Parks and Recreation and Portland Housing Bureau; Council liaison to Elders in Action;

Arts advocate - Oregon Cultural Trust; Aide to Congressman Barney Frank

CANDIDATE STATEMENT

PERSONAL: Nick and his family live in Northeast Portland

Nick Fish: Standing up for People

"Nick is principled, hard-working and accountable. I am proud to endorse him." **Governor Barbara Roberts**

- Brought together community partners to build thousands of affordable homes for families, older adults, and veterans.
- Delivered new parks, trails, natural areas, playgrounds, dog runs, and community gardens.
- Prioritized funding for SUN Schools, senior recreation programs, homeless services, and rent assistance.

Nick Fish: The Right Priorities

"Nick is a champion for family wage jobs, and for our neighborhood small businesses."

Mike Roach and Kim Osgood, co-owners, Paloma Clothing

- Supported job training and earned sick leave for working families.
- Kept promise to lower taxes on small business.
- Advocating for pay equity and against discrimination in housing.
- Bringing new transparency and independent financial oversight to our water and sewer utilities.

Nick Fish: Leadership We Trust

The **Oregon League of Conservation Voters** and **Sierra Club** endorse Nick because he is working hard to protect the Bull Run Watershed and clean up the Willamette River.

"Nick's common sense, passion for public service, and collaborative leadership are refreshing." **Kay Toran, Nonprofit Leader**

Nick's Community Supporters

Portland Firefighters' Association
Oregon ArtPAC
The Mother PAC
SEIU 49

Basic Rights Oregon Equality PAC
Oregon State Council for Retired Citizens
Columbia Pacific Building Trades Council

NickFishforPortland.com

(This information furnished by Nick Fish for City Council)

The above information has not been verified for accuracy by the county.

City of Portland Commissioner, Position 3



Nicholas Caleb

Occupation: Professor of Government, Biology, Environmental Sciences, and Geography, Concordia University

Occupational Background: Policy analyst for Vandana Shiva; Field Organizer, Democratic Party; Federal District Court of Oregon; Oregon Department of Justice

Educational Background: J.D., University of Oregon; LL.M. Tilburg University, Netherlands; B.A. Biology, Concordia University

Prior Governmental Experience: none

CANDIDATE STATEMENT

A Vision For a Clean, Livable, and Equitable Portland

"Nick's leadership on both environmental and social issues like water, transportation, homelessness, and police accountability made this an easy endorsement from us."

- Brian Setzler, Pacific Green Party

"Nick's ardent support for the **\$15 an hour living wage**, as well as his refusal to accept any corporate financing makes him our top choice for city council."

- Michael Cathcart, Portland Socialist Alternative

Everyone Has a Right to the City

Portland's working class is struggling to afford rapidly increasing rent and property taxes. We need **housing justice** via rent control and other anti-displacement policies. We must stop criminalizing homelessness while we connect the disabled, veterans, seniors, and families in crisis to properly funded services.

Real Action on Climate Change and Environmental Justice

To protect our health and global climate, **we must ban coal trains and penalize corporate polluters**. Placing Portland's water supply in a Public Trust would protect our vital resource for present and future generations.

Police Accountability

Fixing the Portland Police Bureau requires an independent civilian review board with the power to investigate, subpoena, and when necessary, dismiss officers for acts of misconduct.

Campaign Promises

Caleb **limited contributions to his campaign to \$50 per person** and pledged to **accept only the average salary of a Portland worker** if elected while donating the remainder toward developing social movements.

A Candidate to Represent Portland

If elected, Caleb would likely be the only commissioner:

- living East of Cesar Chavez Blvd.
- under 50 years old
- educated at Portland and Oregon Universities
- running an entirely grassroots campaign without major self-funding
- riding a bike to work

CalebForCouncil.org

(This information furnished by Friends of Nick Caleb)

The above information has not been verified for accuracy by the county.

City of Portland Commissioner, Position 3



Dan Saltzman

Occupation: Portland City Commissioner

Occupational Background: Environmental Engineer; Small Business Owner; Multnomah County Commissioner; Legislative Aide to Congressman Ron Wyden

Educational Background: Beaverton High School; Cornell University, B.S.; M.I.T., M.S.

Prior Governmental Experience: Multnomah County Commissioner; Board Member, Portland

Community College

CANDIDATE STATEMENT

**"Gumption? Nerve? Leadership? Saltzman fits the bill."
The Oregonian 4/10/10**

As our City Commissioner, Dan Saltzman has helped make Portland a safer, more family friendly, greener and better run city.

Putting Children and Families First

To help ensure our kids are safe and successful, Dan created the Portland Children's Levy, which uses proven programs to prevent child abuse, neglect, hunger and family violence and help foster kids succeed.

A Greener Portland

Dan was in charge of the Big Pipe Project to clean up the Willamette River – the biggest construction project in Portland history – bringing it in on time and under budget. And he was a leader in the "green building" movement to develop a more sustainable economy.

Fighting Homelessness

In his new role as Housing Commissioner, Dan is leading a renewed push to reduce homelessness and get struggling families into permanent affordable housing.

A Safer Community

Dan is a leader on fighting domestic violence, bringing people together to establish the Gateway Center for Domestic Violence Services, to make it easier for victims of domestic violence and their children to receive help under one roof.

Making Government Work

Whether it is saving taxpayers millions by reforming the Fire and Police Disability and Retirement system or finding innovative ways to keep our community safer and healthier as Fire Commissioner, nobody keeps a sharper eye on the bottom line.

Just some of Dan's endorsements:

Oregon League of Conservation Voters
Oregon State Council for Retired Citizens
The Mother PAC
SEIU 49
Basic Rights Oregon Equality PAC
United Food & Commercial Workers Local 555

"Thank you for the opportunity to work on behalf of our children, families, seniors and the city we love. I would appreciate your vote to continue." -- Dan

**www.DanSaltzman.com
503-954-2630**

(This information furnished by Friends of Dan Saltzman)

The above information has not been verified for accuracy by the county.

REGISTERING TO VOTE

WHO MAY REGISTER TO VOTE?

Anyone who is:

- A resident of Oregon;
- A United States citizen; and
- 17 years of age or older.

[Note: Registered Voters must be 18 years of age to receive a ballot.]

HOW CAN I REGISTER?

By mail-in registration form or in person at any county elections office or at a designated state agency, including the Department of Motor Vehicles and some public assistance agencies. Also, voters can access secure online voter registration at <http://www.oregonvotes.org>.

WHEN MAY I REGISTER AND WHAT IS THE REGISTRATION DEADLINE?

You may register at any time. However, your voter registration form must be received or postmarked no later than the 21st day before the election at which you intend to vote.

WHEN DO I UPDATE MY REGISTRATION?

Anytime there is a change in your residential or mailing address; you wish to change parties; or have a name change you must update your registration.

WHERE CAN I FIND VOTER REGISTRATION FORMS?

Post offices, public libraries, city halls, DMV offices and Clackamas County Elections, 1710 Red Soils Ct., Ste. 100, in Oregon City. You can register online, or download and print a PDF form from the Secretary of State's web site at the Oregon Voter Registration link, which can be found at <http://www.oregonvotes.org>.

WHAT INFORMATION IS REQUIRED?

In October 2002, the "Help America Vote Act" was signed into law. The Act changed voter registration requirements nationwide for voting in federal elections. When registering to vote in Oregon for the first time, you must provide an Oregon Driver's License / ID. If you do not have a valid ODL / ID, the last four digits of your Social Security number must be provided.

If you do not have a valid Oregon Driver's License / ID or a Social Security number, you must affirm this by marking the appropriate box on the registration form. If you are registering by mail, you must provide a copy of one of the following: a valid photo identification, a copy of a paycheck stub, utility bill, bank statement or other government document showing your name and address.

If sufficient documentation is not provided at the time of registration, it will be requested by elections officials in order for you to vote at the next federal election.

When filling out the registration card, you must furnish your full name, residence address (and mailing address, if different), ODL or Oregon ID, date of birth, political party preference, and signature. Your residence address must be the physical address where you reside - not a post office box.

WHAT IF I TURN 18 AFTER THE REGISTRATION DEADLINE?

If you will be 18 years of age by election day, you must register no later than the 21st day prior to the election to be eligible to vote in that election.



City of Canby
Measure 3-436

BALLOT TITLE

ADVISING CANBY URBAN RENEWAL AGENCY ON BUILDING A CIVIC CENTER

QUESTION: Should the Canby Urban Renewal Agency proceed with construction of a civic center consisting of city offices and a library?

SUMMARY: The result of this advisory referral will not impact your taxes. A "Yes" vote advises the Canby Urban Renewal Agency to use available Urban Renewal funds that were already secured in December 2012 to build a civic center. This construction would allow City of Canby offices to move from the five current, aging buildings into one space for the purpose of consolidating staff, improving efficiency, and reducing operations costs as well as including a new library that is modern, efficient, and spacious. A "No" vote advises the Canby Urban Renewal Agency to use the same secured funds for other Urban Renewal projects as listed in the Urban Renewal Report (available on-line at the City of Canby website). The ultimate outcome of this vote is advisory only and not legally binding on the Canby Urban Renewal Agency or the Canby City Council.

EXPLANATORY STATEMENT

This referral allows the electorate to provide an accurately accessed public opinion on the building of a civic center using Urban Renewal funds that have already been secured. Because these funds were already secured in December 2012 for this purpose, the result of this advisory referral will not impact your taxes.

A "Yes" vote advises the Canby Urban Renewal Agency to use available Urban Renewal Funds that were already secured in December 2012 to build a civic center and library. This civic center would allow City of Canby downtown offices to consolidate into a single space. Currently, the City of Canby operates from five separate, aging buildings in the downtown area. Having a single civic center downtown would lead to the consolidation of duplicative staff, would improve workplace efficiency overall, would enhance department communications, and would reduce operations costs. Further, the resulting surplus properties would be available to be sold and used in the revitalization of downtown. The civic center would also include a new and improved library that incorporates modern library design, technological advances and efficiencies, and has more space than the current library.

A "No" vote advises the Canby Urban Renewal Agency to use the same secured funds for other Urban Renewal projects as listed in the Urban Renewal Report (available on-line at the City of Canby website at www.ci.canby.or.us).

The ultimate outcome of this vote is advisory only and not legally binding on the Canby Urban Renewal Agency or the Canby City Council.

Submitted by:
Kimberly Scheafer, MMC
City Recorder
City of Canby

NO ARGUMENTS IN OPPOSITION TO THIS MEASURE WERE FILED

For complete filing of this measure visit our website at www.clackamas.us/elections/May2014.html or visit us at 1710 Red Soils Ct, Suite 100, Oregon City, OR 97045

The above information has not been verified for accuracy by the county.

City of Canby
Measure 3-436

ARGUMENT IN FAVOR

There is something even more important than a modern, efficient and spacious library and civic center.

It is a united Canby.

After months of work, city leaders are asking you to join us in a shared community vision.

In these times, it is sometimes said of politics that "compromise is a dirty word."

Your city leaders want to show that is not true of this community. Over the past few months, through respectful discussions we have produced a plan upon which we all agree.

It is a new plan.

It is a better plan.

Most important, it is a plan that is supported by each and every member of the Canby City Council.

Voting "Yes" for this measure will not raise your taxes.

Voting against it will not lower your taxes.

The funds needed for this project are literally in the bank and restricted to "bricks and mortar" projects rather than operations.

If this advisory vote is supported by our community, we will move ahead with construction of a downtown civic center.

It will provide Canby with a modern, efficient and spacious library. It will also allow city government to move from five current aging buildings into one.

It will be a one-stop center for government services by consolidating staff while improving efficiency and reducing operational costs.

Voting "Yes" for this measure will do something more important than advise city officials to proceed with the construction of a library and civic center.

Voting "Yes" will show that Canby can engage in an intense, passionate, and serious debate over its future and emerge united in a vision that is best for the future of our community.

This argument was paid for by the Mayor and City Council with their own money.

Mayor Brian Hodson
Councilor Clint Coleman
Councilor Tim Dale
Councilor Traci Hensley
Councilor Greg Parker
Councilor Ken Rider
Councilor Todd Rocha

(This information furnished by Tim Dale, Traci Hensley, Civic Leaders for a Civic Center PAC)

The printing of this argument does not constitute an endorsement by Clackamas County, nor does the county warrant the accuracy or truth of any statements made in the argument.

City of Damascus

Measure 3-441

BALLOT TITLE

ADOPT COMPREHENSIVE PLAN, ORDINANCE, AND LAND USE REGULATIONS FOR DAMASCUS

QUESTION: Shall the City approve Ordinance No. 2013-52, which includes a comprehensive plan and implementing land use regulations?

SUMMARY: A vote of "yes" approves Ordinance No. 2013-52 ("Ordinance") and its adopted documents, including the Comprehensive Plan, Comprehensive Plan Map, Findings of Fact, Development Code, Zoning Map, Integrated Water Capital Plan, Transportation System Plan and associated documents (collectively, "Documents").

The Ordinance and Documents were prepared by the City after public hearings before the Planning Commission and the City Council. Both the Planning Commission and the City Council heard public testimony at public meetings. The City Council did not adopt the Ordinance.

If approved, the above-listed Comprehensive Plan and other Documents will be submitted to the Oregon Land Conservation and Development Commission ("LCDC") to begin the acknowledgement process, in which LCDC acknowledges that the Comprehensive Plan is consistent with the statewide planning goals.

A vote of "no" would reject adoption of the Ordinance, its adopted Comprehensive Plan and other Documents.

EXPLANATORY STATEMENT

A vote of "yes" approves Ordinance No. 2013-52 ("Ordinance") and its adopted documents, including the Comprehensive Plan, Comprehensive Plan Map, Findings of Fact, Development Code, Zoning Map, Integrated Water Capital Plan, Housing Needs Analysis, Buildable Lands Inventory, Natural Features Inventory, Transportation System Plan and associated documents (collectively, the "Plan").

The Ordinance and Plan were prepared by the City after public hearings before the Planning Commission and the City Council. Both the Planning Commission and City Council heard public testimony at public meetings. The City Council did not adopt the Ordinance.

If approved by a double majority at this election, the Plan will be submitted to the Oregon Land Conservation and Development Commission ("LCDC") to begin the acknowledgement process, in which LCDC acknowledges that the Comprehensive Plan is consistent with statewide planning goals.

A vote of "no" would reject adoption of the Ordinance, and Plan.

COST SUMMARY

The Ordinance and Plan do not adopt any fees and charges. The Plan establishes policy that only property owners that develop their property will be responsible for costs associated with public infrastructure needed to support growth.

The figures in the below cost summary reflect the projected costs to build, operate, and maintain, water and transportation infrastructure to serve Damascus for the next 20 years. The financial analysis that generated the projected costs was performed by the City Engineer and covers public infrastructure identified in the Integrated Water Capital Plans and the Transportation System Plan. A copy of the full financial analysis may be obtained at City Hall.

Water Infrastructure

The City intends to work with Sunrise Water Authority and Clackamas County Water Environmental Services. It is anticipated that these service providers will own and operate the

major water infrastructure in the City. Integrated Water Capital Plan includes costs for four water systems proposed to serve Damascus: drinking water, non-potable water, wastewater, and storm water. The analysis included estimated costs for capital construction, operation, and maintenance. The estimated costs are as follows:

Water Infrastructure Construction Cost Estimates

Drinking water: \$93,300,000.00
Non-Potable Water: \$45,800,000.00
Wastewater Collection and Treatment: \$91,900,000.00
Stormwater: \$4,147,000.00
Total Water Capital Costs: \$ 235,147,000.00

Water Infrastructure Annual Operation and Maintenance Costs Estimates

Drinking Water Treatment: \$1,600,000.00
Drinking Water and Non-Potable Water Distribution: \$2,046,000.00
Wastewater Treatment: \$1,278,000.00
Wastewater Collection: \$4,788,000.00
Stormwater Detention: \$190,000.00
Total Water O&M: \$9,902,000.00

Transportation Infrastructure

The Transportation System Plan identified twenty-two key projects to serve the 20-year period. These projects include refinement plans, roadways including bicycle and pedestrian facilities, intersection improvements, and right-of-way acquisitions. The estimated costs for these projects are as follows:

Transportation Infrastructure Cost Estimates

Transportation Projects - Construction: \$320,480,000.00
Transportation Projects- Annual Operations and Maintenance: \$1,248,800.00.

Submitted by:
Timothy V Ramis
City of Damascus

NO ARGUMENTS IN OPPOSITION TO THIS MEASURE WERE FILED

For complete filing of this measure visit our website at www.clackamas.us/elections/May2014.html or visit us at 1710 Red Soils Ct, Suite 100, Oregon City, OR 97045

The above information has not been verified for accuracy by the county.

The above information has not been verified for accuracy by the county.

City of Damascus
Measure 3-441

ARGUMENT IN FAVOR

The citizen's of Damascus have stated that a comprehensive plan for Damascus must meet our core values—protecting our property rights, keeping a rural feel, and protecting our natural areas and special places. We are citizens who served as unpaid members of the various committees tasked to help develop a comprehensive plan that the community and state would approve. Thousand of volunteer hours were dedicated to develop the 2013 Citizens' comprehensive plan and meet the core values that citizens repeatedly have asked for. This plan increases property rights for property owners yet still maintains a rural feel and protection for our natural areas. One way the plan does this is by requiring open space in all new developments for natural areas and parks. (These park areas can be owned and maintained by the home owners in the development and will increase property values by about 16 percent according to economic analyses.) The 2013 Citizens' plan, Measure 3-441 should result in overall fewer people and houses, reduced noise and pollution, and less traffic than the Mayor's plan, 3-444, while providing protection of our drinking water and natural areas. The 2013 plan has been created by the citizens in 15 town hall meetings. It is the best plan of the three on the ballot for providing balance between development and upholding our core values. We urge you to vote YES on Measure 3-441, the true citizen's plan for Damascus.

Signed,

John W. Ferguson
Bruce Adams
Diana Bradshaw
Katherine Ruthruff
Timothy S. Giorgi
Lynn M. Kellas
Richard A. Klecker
Christine Ferguson
Gaetan Anthony Passannante
Karl Wescott
Dean Apostol
Kitty O'Meara

(This information furnished by Richard A Johnson, Moving Damascus Forward)

The printing of this argument does not constitute an endorsement by Clackamas County, nor does the county warrant the accuracy or truth of any statements made in the argument.

City of Damascus
Measure 3-441

ARGUMENT IN FAVOR

VOTE FOR THE CITIZENS' PLAN OF 2013--Ballot Measure #3-441

Developed and paid for by people's taxes over two years, to 2011 survey.

- Hundreds contributed to 14 Town Halls, the Development Code Committee, the Planning Commission, and 15 days of Council hearings. Changes in the other two plans had NONE of this.
- Projects common sense, middle ground, balance, economy, and compromise.

The Mayor's extreme plan (3-444) has more development, 50% higher density on slopes, diminishes rural atmosphere and natural resources. Result: "stack and pack" like Happy Valley.

Councilor Jackman's plan (3-445) has more stream setbacks, 25% open space on mixed use property, no industrial zones (violating LCDC), no building on slopes over 25%. Result: impinges property rights.

- Saves taxpayers \$12 million: the other plans have 1496 more Dwelling Units, thus higher density, higher sewer, storm water costs.
- Protects churches; no zoning can violate State and Federal law.
- Metro and LCDC kept informed continually. Former Community Development Director, John Morgan, stated (March 4, 2014): "I absolutely believe that in 2013 the Planning Commission created documents which LCDC would have found acceptable and acknowledgeable."
- Metro and LCDC faulted in writing both other plans, citing lack of citizen input, decreased employment numbers and land supply for employment, interim development standards, serial partitioning, auxiliary dwelling units, etc.
- Compensates developers who set aside 25% residential open space by preserving potential total housing units, enhancing home values, and by allowing transfer of development rights to other properties. Open space may be held by the City, parks district, not-for-profits, homeowners association, or retained by private owners.
- Upon acknowledgement of the Plan by LCDC the \$300,000 penalty will be returned.

The 2013 Plan unites our City; the other plans divide it.

Richard Johnson	Jim DeYoung, Councilor
Patricia DeYoung	Katherine Ruthruff
Karl Wescott	Mary Wescott
LaVelle J. Geist	Wayne Geist
Jon Titchenal	Lynn M. Kellas
Mike Bossen	Leslie Bossen

(This information furnished by Richard Johnson, Jim DeYoungCitizens for Moving Damascus Forward)

The printing of this argument does not constitute an endorsement by Clackamas County, nor does the county warrant the accuracy or truth of any statements made in the argument.

ARGUMENT IN FAVOR

If you're like me, tired of spin at city hall, it all boils down to the Mayor. Rather than move forward the citizens' Comprehensive Plan of 2013 for a new vote, the Mayor and his friends proposed a new plan based on THEIR agenda. So Councilor Jackman did too!

BOTH their plans will cost us, the citizens, with expensive state penalties, lost industrial tax revenue, extreme increased density, and less livability!

Mayor's plan; "The Plan That Respects The People." Yah, RIGHT! His plan was developed by HIS elite few to help develop HIS own property. If you like how Happy Valley looks, you'll like HIS plan. Beware of his "marketing." His spin told you in the February 2014 *Northwest Connection* that HE "dug deep" hiring an engineering firm to work on his plan. Fact is, he "dug deep" into your taxes and pockets to do that. Watch the spin.

Mr. Jackman's plan goes the opposite way, even exceeding the desire of many environmentalists. Even a seasonal creek (ditch) would have 50 foot setbacks rendering that area unusable.

I've heard from many that they voted for disincorporation as a way to get rid of a mayor rather than get rid of a city. Fact is, we are still a city and need to go on as a city.

The "2013 Citizens Comprehensive Plan" balances development and environment. It was developed from citizen input with thousands of man hours of work and hearings. YOU already paid for this plan to represent YOU, not special interests. It took a group of citizens working together to put it on your ballot since the Mayor wouldn't.

Your vote is needed NOW to complete state requirements and stop penalties. To submit this plan at state level takes the majority of voters to turn out and 50% (plus one more) voting yes on 3-441. Please vote YES on 3-441 the CITIZENS PLAN.

Keith Pugh
Kris Tabor
Earl Baker
Debby Baker

(This information furnished by Keith H Pugh, Citizens for Moving Damascus Forward)

The printing of this argument does not constitute an endorsement by Clackamas County, nor does the county warrant the accuracy or truth of any statements made in the argument.

VOTING

SOME
FREQUENTLY-ASKED
QUESTIONS

WHAT IF I DID NOT RECEIVE A BALLOT?

If you did not receive a ballot within 5 days of the mailing date, call the Elections Division at 503.655.8510. Your registration will be checked and if it is found to be current, a replacement ballot will be mailed to you.

WHAT IF I NEED ASSISTANCE VOTING?

Call the Elections Division for further instructions at 503.655.8510.

WHAT IF I MAKE A MISTAKE ON MY BALLOT?

Call the Elections Division for further instructions at 503.655.8510.

WHAT IF I CHANGE MY MIND AFTER I HAVE RETURNED MY BALLOT?

As soon as you deposit your ballot in a mailbox or at a ballot drop site, your ballot is considered to have been cast. A new ballot cannot be issued.

DOES MY BALLOT HAVE TO BE RETURNED BY MAIL?

You may return your ballot by mail or drop it off at any designated drop site in the state. The hours of operation for Clackamas County drop sites are listed on Page 44 of this pamphlet.

DO I NEED TO ATTACH FIRST-CLASS POSTAGE TO MY BALLOT ENVELOPE IF I RETURN IT TO A BALLOT DROP SITE?

No, first-class postage is only required if you mail your ballot back to the Elections Division.

WHEN MUST MY BALLOT BE RETURNED?

Your voted ballot must be received in any county election office or drop site by 8:00 p.m. on election night, Tuesday, May 20.
Remember: The postmark does not count.

WHAT IF I SEAL MY RETURN ENVELOPE AND REALIZE I FORGOT THE SECRECY ENVELOPE?

This will not invalidate your ballot. The secrecy envelope is encouraged but not required.

WHAT ARE THE ELECTIONS DIVISION'S HOURS OF OPERATION ON ELECTION DAY?

Clackamas County Elections Division will open at 7:00 a.m. and close at 8:00 p.m.

City of Damascus
Measure 3-444

BALLOT TITLE

ADOPT A COMPREHENSIVE PLAN AND LAND USE DOCUMENTS FOR DAMASCUS

QUESTION: Shall the City approve the Comprehensive Plan primarily prepared by the Mayor's Group and the associated land use documents?

SUMMARY: A vote of "yes" adopts and potentially ratifies the Mayor's Group's Comprehensive Plan; Comprehensive Plan Map; Development Code; Zoning Map; Economic Opportunities Analysis; Housing Needs Analysis; Integrated Water Capital Plan; Buildable Lands Inventory; Natural Features Inventory; Transportation System Plan; and Findings of Fact (the "Mayor's Plan").

The City Council referred the Mayor's Plan to the voters on February 27, 2014, after public hearings before the Council at which public testimony was received.

If approved by a double majority at this election, the Mayor's Plan will be submitted to the Oregon Land Conservation and Development Commission ("LCDC") to begin the acknowledgment process, in which LCDC acknowledges that the Comprehensive Plan is consistent with the Statewide Planning Goals.

If approved by a majority, but not a double majority at this election, the Mayor's Plan will be re-submitted to the voters at the November 2014 election for ratification. A double majority is not required at that election.

A vote of "no" rejects the Mayor's Plan.

EXPLANATORY STATEMENT

A vote of "yes" adopts and potentially ratifies the Mayor's Group's Comprehensive Plan; Comprehensive Plan Map; Economic Opportunities Analysis; Housing Needs Analysis; Buildable Lands Inventory; Natural Features Inventory; Transportation System Plan; Integrated Water Capital Plan; Development Code; Zoning Map; and Findings of Fact (the "Mayor's Plan").

The City Council referred the Mayor's Plan to the voters on February, 27, 2014 after public hearings before the Council at which public testimony was received.

If approved by a double majority at this election, the Mayor's Plan will be submitted to the Oregon Land Conservation and Development Commission ("LCDC") to begin the acknowledgement process, in which LCDC acknowledges that the Comprehensive Plan is consistent with the statewide planning goals.

If approved by a majority, but not a double majority at this election, the Mayor's Plan will be re-submitted to the voters at the November 2014 election for ratification. A double majority is not required at that election.

A vote of "no" rejects the Mayor's Plan.

COST SUMMARY

The Ordinance and Plan do not adopt any fees and charges. The Plan establishes policy that only property owners that develop their property will be responsible for costs associated with public infrastructure needed to support growth.

The figures in the below cost summary reflect the projected costs to build, operate, and maintain, water and transportation infrastructure to serve Damascus for the next 20 years. The financial analysis that generated the projected costs was performed by the City Engineer and covers public infrastructure identified in the Integrated Water Capital Plans and the Transportation System Plan. A copy of the full financial analysis may be obtained at City Hall.

Water Infrastructure

The City intends to work with Sunrise Water Authority and Clackamas County Water Environmental Services. It is anticipated that these service providers will own and operate the major water infrastructure in the City. The Integrated Water Capital Plan includes costs for four water systems proposed to serve Damascus: drinking water, non-potable water, wastewater, and storm water. The analysis included estimated costs for capital construction, operation, and maintenance. The estimated costs are as follows:

Water Infrastructure Construction Cost Estimates

Drinking water: \$93,300,000
Non-Potable Water: \$45,800,000
Wastewater Collection and Treatment: \$99,060,000
Stormwater: \$4,866,000
Total Water Capital Costs: \$ 243,026,000

Water Infrastructure Annual Operation and Maintenance Costs Estimates

Drinking Water Treatment: \$1,600,000
Drinking Water and Non-Potable Water Distribution: \$2,046,000
Wastewater Treatment: \$1,278,000
Wastewater Collection: \$4,788,000
Stormwater Detention: \$226,000
Total Water O&M: \$9,938,000

Transportation Infrastructure

The Transportation System Plan identified twenty-two key projects to serve the 20-year period. These projects include refinement plans, roadways including bicycle and pedestrian facilities, intersection improvements, and right-of-way acquisitions. The estimated costs for these projects are as follows:

Transportation Infrastructure Cost Estimates

Transportation Projects - Construction: \$320,480,000
Transportation Projects- Annual Operations and Maintenance: \$1,248,800

Submitted by:
Timothy V Ramis
City of Damascus

For complete filing of this measure visit our website at www.clackamas.us/elections/May2014.html or visit us at 1710 Red Soils Ct, Suite 100, Oregon City, OR 97045

The above information has not been verified for accuracy by the county.

The above information has not been verified for accuracy by the county.

City of Damascus
Measure 3-444

ARGUMENT IN FAVOR

VOTE YES FOR 3-444

Like many of you, we have been involved in the birth and first steps of the City of Damascus. There have been growing pains and frustrations along the way. However, we believe that Damascus deserves a plan that provides a common-sense path to a vibrant, attractive and livable community. A plan that respects your private property rights and underlying core values while providing flexibility and tools to both the property owners and the city to achieve those goals.

We now have a chance to put such a plan into action with 3-444.

VOTE YES FOR 3-444

Measure 3-444 reflects the unique character and values of Damascus. It allows flexibility in development in compliance with state and federal law without the extreme and unnecessary restrictions sought to be imposed by other plans. 3-444 provides common-sense solutions that recognize and protect the resources, comply with Oregon's land-use laws and honors and puts into action the core values identified by the citizens of Damascus.

VOTE YES FOR 3-444

Measure 3-444 gives the citizens of Damascus freedom of choice, allowing sound and lawful development while protecting core values. It avoids unnecessary and extreme restrictions and requirements, while imposing reasonable and effective guidelines for development. Some like to live in close proximity to their neighbors, while others enjoy more seclusion. Some welcome public trails across their property. Others do not. In these and a full range of other matters, 3-444 allows a choice.

VOTE YES FOR 3-444

(This information furnished by Gene and Debbie Frassetto)

The printing of this argument does not constitute an endorsement by Clackamas County, nor does the county warrant the accuracy or truth of any statements made in the argument.

City of Damascus
Measure 3-444

ARGUMENT IN FAVOR

-This Is The Property Rights Plan-

- Respects the citizens
- Allows more flexibility for homeowners and businesses
- Emphasizes larger lot single family residence
- Protects the rural character of Damascus
- Limits government's excessive controls and regulations
- Protects existing neighborhoods

Once the city completed the Draft Comprehensive Plan, my workgroup was then in an enviable position of being able to hire a civil engineering firm to review all the completed work. What we found in the five hundred and fifty pages of The Comprehensive Plan and The Development Code documents were startling, especially from a property rights perspective.

The other plan's Open Space policy requires you to dedicate 25% of your residential property to open space for the right to develop. You can purchase back from the city YOUR property you donated in the first place at their price and at their discretion. The other plans call this Payment - In - Lieu. This plan removes that language.

The other plans require a minimum of ten acres with some double talk exceptions to be able to develop with well and septic. What about all those people that have between 1 and 9.99 acres that won't see public sewer for decades? This plan simplifies that language and only requires a minimum of one acre parcels to be able to build another house on YOUR property. Of course well and septic standards apply.

We took out the very restrictive Smart Growth commercial development code language that prescribes a "Pearl District" city wide. That rigid policy will discourage businesses from moving into town. That code even requires regional trails with public access onto industrial properties. This plan relaxes that 'not so smart growth' code language and allows much more flexibility for the market to decide.

This plan removes the requirement for regional trails that go from neighborhood to neighborhood, adjacent to backyards and businesses with public access.

Vote Yes on 3-444

(This information furnished by Mayor Steve Spinnett)

The printing of this argument does not constitute an endorsement by Clackamas County, nor does the county warrant the accuracy or truth of any statements made in the argument.

City of Damascus
Measure 3-444

ARGUMENT IN FAVOR

To the Republicans of the City of Damascus

The Clackamas County Republican Party asks that you vote for only one Damascus Measure on the ballot.

VOTE YES and ONLY YES for Damascus Measure 3-444.

Measure 3-444 is also known as the Mayor's Group Comprehensive Plan.

The Mayor's Group Comprehensive Plan does not subsidize development by gifting density to some at the expense of building rights for others. If Damascus is a city then ALL of its property owners have equal rights to their land. This Plan is the only one that protects all property owners and says no to "Smart Growth" or social engineering.

Please vote YES for Damascus Measure 3-444 and ONLY this Damascus ballot measure.

YES on Damascus Measure 3-444 is a vote to adopt the Mayor's Group Comprehensive Plan because it is the ONLY PLAN that represents a property owner's rights first.

Measure 3-444, the Mayor's Group Comprehensive Plan is the ONLY plan on the ballot that:

- Allows "Interim Development" for residential zoned properties of 1 acre or more. The other plans require 10 acres minimum.
- Allows property owners the ability to have wider defined use of their land today even if Damascus has not provided urban services.
- Uses minimums on land use set asides for environmental protection and will protect you from the unnecessary "takings" of your property if you decide to develop it.
- Explicitly establishes a right to operate a home based business in residential zones whether you currently have one or ever want to establish one.
- Will protect your right to own and operate a rural small business that includes equipment, fabrication and other uses as long as they conform with urban noise requirements.
- Does not reward "stack-and-pack" development at the expense of other property owner's rights.

For these reasons the Clackamas County Republican Party asks you to vote YES on 3-444

City of Damascus
Measure 3-444

ARGUMENT IN OPPOSITION

Vote No on Measure 3-444

The Spinnett plan is written to give Damascus to the Developers. This is a plan rewritten by one man. Mr. Spinnett removed about a fourth of the original plan, which removed many restrictions on development. If your home is on less than two acres of land you need to be very concerned about the impact on you home value and lifestyle. A quality plan balances the interests of developers, current citizens and future citizens of the City. The plan created in the summer of 2013 did this by involving all sides of our community. The Spinnett plan is written for the developers, not our Citizens.

You will hear false claims about the legality of applying conditions to the construction of churches. A large church can have a huge impact on a neighborhood. Any conditions applied must relate to minimizing the impact and need to be applied equally with other similar uses.

You will hear false claims about the taking of property. A development will build transportation, sewer, water and storm water facilities. The City will need right of way and easements to allow maintenance of this infrastructure. The open space requirements create a way to balance the impact of protection for our natural features between all developments. These open spaces reduce the cost of our storm water facilities and help protect the water we drink, which comes from the Clackamas River.

The Spinnett plan will create a Damascus we will not want to live in. The City will be over developed with fewer jobs than the original plan. The large land owners will be enriched, while the rest of us will pay for their profit thru lack of infrastructure.

I urge you to vote NO on the Spinnett plan, Measure 3-444.

Please vote yes on one or both of the other two plans.

Thank you,
Randy Shannon
Damascus City Councilor

(This information furnished by John Lee, Chairman, Clackamas County Republican Party)

The printing of this argument does not constitute an endorsement by Clackamas County, nor does the county warrant the accuracy or truth of any statements made in the argument.

(This information furnished by Randall C Shannon)

The printing of this argument does not constitute an endorsement by Clackamas County, nor does the county warrant the accuracy or truth of any statements made in the argument.

City of Damascus
Measure 3-444

ARGUMENT IN OPPOSITION

We are citizens who served as members of various committees that helped develop the 2013 comprehensive plan which balances development and increased property rights for all property owners with keeping a rural feel and protection of our natural areas. Some of the city council refused to accept this citizen-based plan and have put their own plans on the ballot. We strongly believe that Mayor Spinnett's plan, Measure 3-444, is not balanced, does not uphold the citizen's core values and favors the developers and big land interests. It will open up significantly more land to development resulting in more houses and more people than either of the other plans on the ballot, including almost doubling the number of houses which can be built in the buttes. It slashes the amount of land that would be set aside for parks in every new development that the 2013 Citizens' plan called for and instead opens those areas to more houses. The mayor's plan will open the door to more traffic, noise, and pollution and the destruction of forests, water quality in our streams and the rural feel that Damascans cherish. We urge you to stop the big money developers and protect our city with a NO vote on Measure 3-444.

Signed,

- John W. Ferguson
- Bruce Adams
- Diana Bradshaw
- Katherine Ruthruff
- Timothy S. Giorgi
- Lynn M. Kellas
- Richard A. Klecker
- Christine Ferguson
- Gaetan Anthony Passannante
- Karl Wescott
- Dean Apostol
- Kitty O'Meara

(This information furnished by Richard A Johnson, Moving Damascus Forward)

The printing of this argument does not constitute an endorsement by Clackamas County, nor does the county warrant the accuracy or truth of any statements made in the argument.

City of Damascus
Measure 3-444

ARGUMENT IN OPPOSITION

Why the Citizens of Damascus should reject the Mayor's Comprehensive Plan, #3-444, as TOO extreme:

The Mayor's sales pitch:

- 1) no open space required till full build out—then only 15%
- 2) interim development on 1 Acre or more
- 3) very large dimensions for city blocks
- 4) no regional connection of trails
- 5) setbacks from streams according to "regional and state standards"
- 6) development of 1 house per 2 acres on slopes over 25%; higher residential density below this
- 7) permission of religious institutions in all zones
- 8) no requirement to place land in public easement to develop

What the Mayor is NOT telling you:

LCDC and Metro faulted in writing (Feb, 2014) his full build out strategy (#1), his interim development standard (#2), his city block dimensions as too large (#3), lack of connectivity in his plan (#4). These agencies raised no red flags about the 2013 Plan.

- #5 proposes Metro's (Mayor's usual bogeyman) standard—15 feet
- #6 decimates the buttes with 50% more density than the 2013 Plan and clear-cuts half the forests [think: "stack 'N pack" Happy Valley]
- #7 is a red herring: no zoning can violate federal and state constitutions. Without oversight—Rajneesh Puram.
- #8 is misleading: whenever utility easements are made, owners retain land ownership

Also, the Mayor does NOT tell you

- 1) he changed the 2013 Plan with input from only 6-8 people! But hundreds contributed to the 2013 plan (Town Halls, etc) to make it the community's own plan
- 2) his plan diminishes rural atmosphere and natural resources
- 3) his plan means higher density: 1496 more dwelling units (calculated from figures of City's engineering firm)
- 4) his plan costs taxpayers almost \$12 million more (same firm) in sewer, storm water costs

VOTE NO ON #3-444: it's TOO extreme. VOTE YES on #3-441: it's balanced and fair

- Richard Johnson Katherine Ruthruff
- Karl Wescott Donald M. Arbuckle
- Leslie Arbuckle LaVelle J. Geist
- Wayne Geist Lynn M. Kellas
- Jim DeYoung

(This information furnished by Richard Johnson, Citizens for Moving Damascus Forward)

The printing of this argument does not constitute an endorsement by Clackamas County, nor does the county warrant the accuracy or truth of any statements made in the argument.

City of Damascus
Measure 3-445

BALLOT TITLE

ADOPT A COMPREHENSIVE PLAN AND LAND USE DOCUMENTS FOR DAMASCUS

QUESTION: Shall the City approve the Comprehensive Plan primarily prepared by the Council President's Group and the associated land use documents?

SUMMARY: A vote of "yes" adopts and potentially ratifies the Council President's Group's Comprehensive Plan; Comprehensive Plan Map; Development Code; Zoning Map; Economic Opportunities Analysis; Housing Needs Analysis; Integrated Water Capital Plan; Economic, Social, Environmental, and Energy Analysis; Buildable Lands Inventory; Natural Features Inventory; Transportation System Plan; and Findings of Fact (the "Council President's Plan").

The City Council referred the Council President's Plan to the voters on February 27, 2014, after public hearings before the Council at which public testimony was received.

If approved by a double majority at this election, the Council President's Plan will be submitted to the Oregon Land Conservation and Development Commission ("LCDC") to begin the acknowledgement process, in which LCDC acknowledges that the Comprehensive Plan is consistent with the statewide planning goals.

If approved by a majority, but not a double majority at this election, the Council President's Plan will be re-submitted to the voters at the November 2014 election for ratification. A double majority is not required at that election.

A vote of "no" rejects the Council President's Plan.

EXPLANATORY STATEMENT

A vote of "yes" adopts and potentially ratifies the Council President's Group's Comprehensive Plan; Comprehensive Plan Map; Economic Opportunities Analysis; Housing Needs Analysis; Buildable Lands Inventory; Environmental, Social, Environmental Energy Analysis; Natural Features Inventory; Transportation System Plan; Integrated Water Capital Plan; Development Code; Zoning Map; and Findings of Fact (the "Council President's Plan").

The City Council referred the Council President's Plan to the voters on February, 27, 2014 after public hearings before the Council at which public testimony was received.

If approved by a double majority at this election, the Council President's Plan will be submitted to the Oregon Land Conservation and Development Commission ("LCDC") to begin the acknowledgement process, in which LCDC acknowledges that the Comprehensive Plan is consistent with the statewide planning goals.

If approved by a majority, but not a double majority at this election, the Council President's Plan will be re-submitted to the voters at the November 2014 election for ratification. A double majority is not required at that election.

A vote of "no" rejects the Council President's Plan.

COST SUMMARY

The Ordinance and Plan do not adopt any fees and charges. The Plan establishes policy that only property owners that develop their property will be responsible for costs associated with public infrastructure needed to support growth.

The figures in the below cost summary reflect the projected costs to build, operate, and maintain, water and transportation infrastructure to serve Damascus for the next 20 years. The financial analysis that generated the projected costs was performed by the City Engineer and covers public infrastructure identified in the Integrated Water Capital Plans and the

Transportation System Plan. A copy of the full financial analysis may be obtained at City Hall.

Water Infrastructure

The City intends to work with Sunrise Water Authority and Clackamas County Water Environmental Services. It is anticipated that these service providers will own and operate the major water infrastructure in the City. The Integrated Water Capital Plan includes costs for four water systems proposed to serve Damascus: drinking water, non-potable water, wastewater, and storm water. The analysis included estimated costs for capital construction, operation, and maintenance. The estimated costs are as follows:

Water Infrastructure Construction Cost Estimates

Drinking water: \$93,300,000
Non-Potable Water: \$45,800,000
Wastewater Collection and Treatment: \$99,060,000
Stormwater: \$4,866,000
Total Water Capital Costs: \$ 243,026,000

Water Infrastructure Annual Operation and Maintenance Costs Estimates

Drinking Water Treatment: \$1,600,000
Drinking Water and Non-Potable Water Distribution: \$2,046,000
Wastewater Treatment: \$1,278,000
Wastewater Collection: \$4,788,000
Stormwater Detention: \$226,000
Total Water O&M: \$9,938,000

Transportation Infrastructure

The Transportation System Plan identified twenty-two key projects to serve the 20-year period. These projects include refinement plans, roadways including bicycle and pedestrian facilities, intersection improvements, and right-of-way acquisitions. The estimated costs for these projects are as follows:

Transportation Infrastructure Cost Estimates

Transportation Projects - Construction: \$320,480,000
Transportation Projects - Annual Operations and Maintenance: \$1,248,800

Submitted by:
Timothy V Ramis
City of Damascus

NO ARGUMENTS IN FAVOR OR OPPOSITION TO THIS MEASURE WERE FILED

For complete filing of this measure visit our website at www.clackamas.us/elections/May2014.html or visit us at 1710 Red Soils Ct, Suite 100, Oregon City, OR 97045

The above information has not been verified for accuracy by the county.

The above information has not been verified for accuracy by the county.

City of Milwaukie
Measure 3-439

City of Milwaukie
Measure 3-439

BALLOT TITLE

AUTHORIZES GENERAL OBLIGATION BONDS TO REFINANCE LIGHT RAIL CONSTRUCTION DEBT

QUESTION: Shall Milwaukie issue \$4,000,000 of general obligation bonds to refinance light rail construction debt to retain core services? If the bonds are approved, they will be payable from taxes on property or property ownership that are not subject to the limits of sections 11 and 11b, Article XI of the Oregon Constitution.

SUMMARY: This measure authorizes the City of Milwaukie to issue up to \$4,000,000 of general obligation bonds to refinance Milwaukie's share of light rail construction costs. The bond proceeds would be used to refinance the debt, potentially at a lower interest rate, reducing Milwaukie's payments and saving the City money. Currently, the debt is being repaid from the City's General Fund, which also pays for core services including police protection and library services. Refinancing the debt would allow the City to retain core services. The bonds would be payable from property taxes and would be repaid over a period of 20 years or less. If the bonds are approved, the additional tax is estimated to cost \$36 per year for a Milwaukie home with a taxable value of \$200,000.

EXPLANATORY STATEMENT

This measure authorizes the City of Milwaukie to issue up to \$4,000,000.00 of general obligation bonds to refinance Milwaukie's share of light rail construction costs.

The bond proceeds would be used to refinance the debt, potentially at a lower interest rate, reducing Milwaukie's payments and saving the City money. Currently, the debt is being repaid from the City's General Fund, which also pays for core services including police protection and library services. Refinancing the debt would allow the City to retain core services. The bonds would be payable from property taxes and would be repaid over a period of 20 years or less. If the bonds are approved, the additional tax is estimated to cost \$36 per year for a Milwaukie home with a taxable value of \$200,000.

Submitted by
Timothy V. Ramis
City of Milwaukie

NO ARGUMENTS IN OPPOSITION TO THIS MEASURE WERE FILED

For complete filing of this measure visit our website at www.clackamas.us/elections/May2014.html or visit us at 1710 Red Soils Ct, Suite 100, Oregon City, OR 97045

ARGUMENT IN FAVOR

Island Station Neighborhood District Association asks you to vote YES to preserve police, library and other City services!

The City budget, like many of our personal budgets, has been severely strained in recent years. The City has been unable to fill a number of vacancies, and if this measure fails, further cuts in staffing -- and in services for residents -- will be inevitable. Whether it is someone you might see on a regular basis, like police officers or librarians, or a planner or inspector that you might rarely encounter, all staff are integral to the safety and livability of our community.

The bond measure would finance the City's \$4 million light rail obligation over the next 20 years. Financing the debt by bond allows Milwaukie to fund the capital project in an appropriate manner, and to lock in a low interest rate that should provide substantial savings over the term. For more details, see www.milwaukiebond.com.

This is NOT a vote of support for light rail. That decision has been made and is irrevocable at this point in time, and we need to make the best of it.

We are asking you to support the people and departments that run our City every day.

A yes vote is a vote for enabling our City to meet our obligation to pay for a capital asset with appropriate funding methodology.

A yes vote is a vote for enabling our City to avoid the elimination of three to four staff positions this year and more in the years to come.

Milwaukie has a number of projects on the horizon that will suffer delays, and in some cases, may be stalled indefinitely if current staffing levels cannot be maintained -- from Riverfront Park and four new parks around town to sidewalk and street improvements.

We believe the right thing for enhancing and preserving our community is a vote in support of this measure.

Please join us and vote YES!

(This information furnished by Karin Power, Secretary, Island Station Neighborhood District Association)

The printing of this argument does not constitute an endorsement by Clackamas County, nor does the county warrant the accuracy or truth of any statements made in the argument.

The above information has not been verified for accuracy by the county.

City of Milwaukie
Measure 3-439

ARGUMENT IN FAVOR

Milwaukie City Council is searching for ways to save money and retain core City services.

1. In May, voters will be asked to approve a \$4 million general obligation bond to refinance the City's debt for light rail construction.
2. By refinancing the City's debt there is an opportunity to lock-in a lower interest rate, saving taxpayer money over the 20-year life of the bond.
3. The bond funds will relieve debt payments (rising to \$365,000 per year) that currently come from the City's General Fund, which also supports core services including police protection and library. Refinancing the debt allows the City to retain these core services.
4. Refinancing could preserve the equivalent of three full-time positions. Since 2011, 15 positions in 7 departments were temporarily held open, reorganized or eliminated to cut costs and meet financial obligations.
5. The bonds would be payable from property taxes. If the bonds are approved, the additional tax is estimated to cost \$36 per year for a Milwaukie home with a taxable value of \$200,000.
6. Milwaukie's good financial standing offers favorable interest rates and more savings. The City is nearly debt free: the most recent bond issue was approved in 1990, and fully repaid in 2011.

After listening to city councilor presentations during our February 2014 meeting and discussion during our March 2014 meeting, the Lewelling, and Linwood NDAs would like to endorse the May 2014 bond measure and reiterate the importance of the above points.

Respectfully,

Bryan Trotter
Lewelling NDA Chair

Zac Perry
Linwood NDA Chair

(This information furnished by Bryan Trotter, Lewelling NDA and Zac Perry, Linwood NDA)

The printing of this argument does not constitute an endorsement by Clackamas County, nor does the county warrant the accuracy or truth of any statements made in the argument.

City of Milwaukie
Measure 3-439

ARGUMENT IN FAVOR

This Bond measure is simply about two things: saving the City money and preserving the already limited General Fund for services we all want.

This is not a question of whether or not we want light rail. It is being built as we speak. Nor is this a question of whether the City of Milwaukie should pay for any portion of the light rail project. That decision was made years ago and is legally binding. We must repay \$4 million dollars -- our share of the cost. The question is: Where will that money come from?

We have two choices: The first and best option is to pitch in a little bit each year, as a community, to cover our debt. That is what this bond measure does. This allows us to get a lower interest rate on this debt and not touch our already stretched General Fund Budget. We will preserve our excellent police force, extended library hours, and quick service from City departments.

The only other option is to continue take the annual payments out of the General Fund which currently supports Police, Library and other core services. If we choose this option we will have to cut some of our core services a little more each year (our current loan payments increase each year). Milwaukie already runs one of the tightest city staffs in the area. Further cuts will be felt.

A vote for this Bond Measure is a vote for a vibrant and healthy community.

Please Vote Yes on Ballot Measure 3-439

Jeremy Ferguson Mark Gamba
Mayor, City of Milwaukie Councilor, City of Milwaukie

(This information furnished by Mark Gamba, Jeremy Ferguson, Friends of Milwaukie)

The printing of this argument does not constitute an endorsement by Clackamas County, nor does the county warrant the accuracy or truth of any statements made in the argument.

City of Milwaukie
Measure 3-440

BALLOT TITLE

CHARTER AMENDMENT TO CLARIFY CITY MANAGER RESIDENCY REQUIREMENT

QUESTION: Should the Charter be amended to clarify that the City Manager need not reside in Milwaukie?

SUMMARY: If amended, Section 27(a) of the Milwaukie Charter would be amended to clarify that the City Manager does not need to reside in the City of Milwaukie. Under the current charter, the City Manager does not need to be a resident of the city at the time of appointment, but is required to take up legal residency in the City of Milwaukie either within six months of the date of hire or within such time as agreeable to the council.

EXPLANATORY STATEMENT

If this measure is approved, Section 27(a) would be amended to clarify that the City Manager does not need to reside in the City of Milwaukie. Under the current City Charter, the City Manager does not need to be a resident of the city at the time of appointment, but is required to take up legal residency in the City of Milwaukie either within six months of the date of hire or within such time as agreeable to the City Council.

The text of the Charter, if amended, would read as follows (new language underlined, deleted language stricken):

Section 27. MANAGER

(a) **QUALIFICATIONS.** The city manager shall be the administrative head of the government of the city. The city manager shall be chosen by the council without regard to political considerations and solely with reference to executive and administrative qualifications. The city manager need not be a resident of the city ~~or of the state at the time of appointment, but shall take up legal residency in the city of Milwaukie within six months of the date of hire, or within such time as is agreeable to the council.~~ Before taking office, the city manager shall be bondable in such amount with such surety as may be approved by the council. The premiums on such bond shall be paid by the city.

Submitted by
Timothy V. Ramis
City of Milwaukie

NO ARGUMENTS IN FAVOR OF THIS MEASURE WERE FILED

For complete filing of this measure visit our website at www.clackamas.us/elections/May2014.html or visit us at 1710 Red Soils Ct, Suite 100, Oregon City, OR 97045

City of Milwaukie
Measure 3-440

ARGUMENT IN OPPOSITION

Please vote no on 3-440

We strongly and firmly believe that the best interests of the City of Milwaukie are served when the City Manager resides in the City, and demonstrates his/her commitment and desire to be a part of the community. Therefore we ask you to **vote NO on 3-440**.

The City Manager has as much, if not more, influence on the daily running and livability of the City than does Council. You would not accept members of Council living outside the City, and you should require that the City Manager resides in the City as well.

- The Manager is solely responsible for employing city staff. If s/he does not live in the city s/he does not have to experience the consequences of her/his actions. If s/he prefers to hire planners over police officers they do not have to live with the lack of adequate police staffing to protect our citizens. Choosing to postpone funding for street maintenance and repair means they do not have to drive daily down roads with huge potholes and inadequate stormwater drainage.

- A manager living in the city has a much clearer understanding of the city's challenges. Engaging more frequently in the city's events such as his/her own neighborhood association meetings and attendance at city events provides more opportunity to experience what's best and worst about Milwaukie and to meet more neighbors and learn their views.

- In the event of a major disaster the City Manger has a vital role in the Emergency Operations Center, located in the City. A City Manager trapped outside the City by collapsed or impassable infrastructure cannot fulfill that role.

We urge you to consider how important it remains to have a City Manager invested in the community by living here, as well as working here. **Vote NO on 3-440.**

Councilor Scott Churchill

Councilor Dave Hedges

Councilor Mike Miller

(This information furnished by Councilor David Hedges, Councilor Mike Miller and Councilor Scott Churchill)

The printing of this argument does not constitute an endorsement by Clackamas County, nor does the county warrant the accuracy or truth of any statements made in the argument.

The above information has not been verified for accuracy by the county.

City of Oregon City Measure 3-435

BALLOT TITLE

CITY OF OREGON CITY LIBRARY GENERAL OBLIGATION BOND AUTHORIZATION

QUESTION: Shall Oregon City issue up to \$6 million in general obligation bonds to renovate and expand the Oregon City Library? If the bonds are approved, they will be payable from taxes on property or property ownership that are not subject to the limits of sections 11 and 11b, Article XI of the Oregon Constitution.

SUMMARY: Approval of this measure authorizes the City to issue up to \$6 million of general obligation bonds to pay capital costs related to renovation and expansion of the Oregon City Library at the Carnegie Center, including costs related to the bonds. The City intends to pay debt service on the bonds from revenues already available to the City and does not intend to levy property taxes to pay the bonds. Approval of this measure will allow the City to finance the library renovation and expansion with general obligation bonds, which have a lower interest rate than alternative financing mechanisms. The bonds may be issued in one or more series. Each series will mature in 20 years or less.

EXPLANATORY STATEMENT

The 5,000 SF Oregon City Library at the Carnegie Center is more than 100 years old and originally served a population of approximately 5,000. Today, the Library is working within its original space to serve a growing population of more than 54,000. Usage of the existing Library is active despite its limited size. Last year the Library circulated 880,250 items and had 191,934 visits. In the last several years, open hours have increased from 23 hours per week to 56 hours per week. However, usage is limited by space. The Oregon Library Association Public Library Standards indicate that Oregon City needs a much larger library than currently exists.

After studying alternatives for years, the City Commission resolved that a 15,000 SF expansion and renovation should occur at the existing Library at the Carnegie Center. The cost of the expansion/renovation is approximately \$10 million. Through responsible financial management, the City has set aside \$4 million for the project, leaving a balance of \$6 million to complete it. To obtain the lowest interest rates on financing, the City proposes to issue up to \$6 million in general obligation bonds which are secured through real property taxes. The City does not intend to raise taxes to fund the project, but rather plans to repay the \$6 million with existing revenue sources, including the Library District and City funds.

This ballot measure seeks authorization from the voters of Oregon City to allow the City to borrow up to \$6 million through the issuance of general obligation bonds over a period of up to 20 years to expand/renovate the Library. The Oregon City Charter and the Oregon Constitution require voter approval of the indebtedness even though the City does not intend to raise property taxes and intends to pay for the bonds with existing annual income streams dedicated only for this purpose.

Proceeds from the bonds may be used only for the purpose of renovating/expanding the Library. The Library project would include new spaces to read, relax and study, spaces for children and teens, space for a larger collection of library materials, a meeting room for programs and community use, more internet computers, furnishings and fixtures and other improvements.

The improvements would allow the Library to evolve into a comprehensive center for lifelong learning, with resources and services for all citizens, regardless of age or income level. The new facility would include more space for staff to guide people to the most accurate information through the use of various electronic devices and technologies. A new meeting/program room would allow for additional programs at different times of the

day and would provide more meeting space to the community. Areas for children and teens, specifically designed to captivate and inspire, would provide improved collections and a wider range of programming. These are intended to encourage literacy skills and develop a foundation for life-long learning and education.

Oregon City seeks to complete this project to improve library services today and for years to come.

Submitted by:
Nancy Ide
City Recorder
City of Oregon City

**NO ARGUMENTS IN OPPOSITION TO THIS
MEASURE WERE FILED**

For complete filing of this measure visit our website at www.clackamas.us/elections/May2014.html or visit us at 1710 Red Soils Ct, Suite 100, Oregon City, OR 97045

The above information has not been verified for accuracy by the county.

The above information has not been verified for accuracy by the county.

City of Oregon City
Measure 3-435

ARGUMENT IN FAVOR

Public libraries are the great equalizers. Everyone, regardless of economic, social, or educational status, has access to the Library's print material, internet and Wi-Fi services, CDs and DVDs, programs and many other resources and services.

The existing library's 5,000 ft² was built in 1913 when the City's population was 5,000. The district's current population is 54,000. We need an additional 15,000 ft² to meet current and future needs. After years of receiving public input and evaluating sites, the Oregon City Library Board and City Commission unanimously concluded that the most economically feasible site was that of the current Carnegie library.

The City already has \$4 million available to build an addition to the back of the Carnegie. The remaining \$6 million sought in this bond measure will be met without raising taxes.

Some of the issues raised were

Design: So as not to distract from the uniqueness of the current Carnegie building, the new structure will be an addition to the rear of the Carnegie, would not be the same as the Carnegie's, but would have Carnegie elements.

Tree removal: The lifespan of remaining trees is limited because of Dutch Elm disease.

Concerts in the Park: Independent of the need for the addition, the decision was made to move the concerts to the End of the Trail Interpretive Center because the Library's park could no longer accommodate the large attendance at the most popular events.

Parking: The City recently purchased a parking across the street from the Library and will seek ways to increase parking opportunities along the perimeter streets.

Branch libraries: The first need is to commit ourselves to a building that offers space for currently stored materials and expanded programs and services - a space that is not available in the current library and that could not be accommodated within branches. The expansion proposed will accommodate these needs and could be a central library within a future larger district-wide system.

Doug Neeley, Mayor

(This information furnished by Doug Neeley)

The printing of this argument does not constitute an endorsement by Clackamas County, nor does the county warrant the accuracy or truth of any statements made in the argument.

City of Oregon City
Measure 3-435

ARGUMENT IN FAVOR

Money SPENT is an investment decision.
Money NOT SPENT is also an investment decision.

There are 2 considerations in any investment decision --risk and reward.

Measure 3-435 is a low-risk investment:

Little risk of increased taxes - The previously-approved library levy (already in place) is currently generating enough income to service the proposed library bond. Consequently, there is little chance any new taxes will be required to pay for the library expansion project.

Low interest rates - Because interest rates are at historical lows, and because Oregon City's credit rating is AA (one of the best ratings in Oregon), the interest paid on the proposed bond will be at favorable rates.

Low construction costs - Due to low current inflation rates, construction costs are lower now than they will be in the future.

Other potential funding sources - Taxpayers will have opportunities to 'leverage' monies from the County, City, and Library District to make their investment smaller and go farther.

Measure 3-435 is a high-reward investment:

Cost savings - Because this project is being built on land already used for a library, taxpayers won't pay for new property or for zoning fees. Also, by building on an existing library site, revenue-producing property won't have to be taken off the tax rolls.

Increased property values - This library investment will improve property values in the immediate neighborhood and in the rest of the city. A cutting-edge library will provide incentive for individuals and businesses to locate in Oregon City. Many of these individuals and employees will pay property taxes to help fund city services.

Improved education and job-seeking opportunities - Cutting-edge libraries offer educational tools for job seekers. Oregon City needs an educated work force.

An expanded library will help ensure a culturally and economically healthy community. The Oregon City Business Alliance urges a 'YES' vote on Measure 3-435

The Oregon City Business Alliance

(This information furnished by Blane Meier, Oregon City Business Alliance)

The printing of this argument does not constitute an endorsement by Clackamas County, nor does the county warrant the accuracy or truth of any statements made in the argument.

City of Oregon City Measure 3-435

ARGUMENT IN FAVOR

"I grew up in Oregon City, birthplace of hackey sack, Oregon's first saw mill, the coolest municipal elevator in the world, and Conde McCullough's first exquisite Art Deco arch bridge. The only dream I ever had as a kid was to become a writer, and many years later I accomplished that goal."

"Sometimes, readers ask me where it all began and I always tell them: The Carnegie Library in Oregon City. It opened the doors to my curiosity about the past."

These are the words of Matt Love, award winning author of ten books about Oregon and its history. The Oregon City Library Foundation board shares Matt's passion and urges you to support our library.

Your "yes" vote will

- open the doors to **all** who are curious
- create a space for people and ideas to **connect**
- respond to **information** needs not yet envisioned
- make a **place** where the past and future meet

Let's build a library that is up to the standards that our community expects and deserves – in the heart of Oregon City on its original, historic Carnegie site.

Join with us, and say "yes" to a library that will serve our citizens for generations to come.

"I want even more for my hometown library. There are so **many more stories to tell**, about Oregon, about the country, about the world. **And a great library is where many of them begin.**" (Matt Love)

The OC Library Foundation Board says "yes" to our library.

Brian Johnson
Claire Kellogg
Matt Love
Karen Martini
Steve Milner
Harryette Shuell
Linda VanHaverbeke

The OC Library Foundation is dedicated to enhancing and sustaining our library, to ensure the relevance and viability of programs, collections, technology and amenities.

(This information furnished by Karen Martini, Oregon City Library Foundation Board)

The printing of this argument does not constitute an endorsement by Clackamas County, nor does the county warrant the accuracy or truth of any statements made in the argument.

City of Oregon City Measure 3-435

ARGUMENT IN FAVOR

It makes good sense to expand our city library!

- Using property the city already owns is **cost-effective and practical**.
- Our beautiful and historic Carnegie building **will be preserved**.
- The new addition will **reflect architectural features** of the original library.
- **Parking concerns** were addressed when the City purchased a nearby parking lot in 2013.
- Best of all, we can add badly needed space for people, books, and computers **without raising our taxes!**

It's difficult to provide 21st century technology in a 20th century library.

- Our library is **too small** to adequately serve our community.
- Our library is still 5,000 sq ft - just as in 1913 when OC's population was 5,000. **That same space now serves 54,000 people, 101 years later!**
- **Seventy-five percent** of library collections are in storage - no shelf space.
- Fewer new materials and computer space - **no room**.

Vote **YES** to:

- Enlarge our **tiny** library - using existing funding.
- Provide **critical space** for reading, studying, computers, meetings, and a growing collection of books and materials.
- Give **Oregon City the library it needs** - for students, job-hunters, internet users, information seekers and technology for a growing community.

Oregon City needs a bigger and better library.

Join us in voting **YES** to expand the Library! (Without raising taxes)

Alice Norris	Oregon City Ed. Assoc.
Lynda Orzen	Cynthia L. Towle
Daphne Wuest	Carol Kemhus
Wendell Baskins	Todd Kemhus
Lynn Baskins	William B. Gifford
Janis Salisbury	Joyce E. Gifford
John Salisbury	Susan L. Ziolko

www.ocbcl.org

(This information furnished by Lynda Orzen, OC Backs the Carnegie Library)

The printing of this argument does not constitute an endorsement by Clackamas County, nor does the county warrant the accuracy or truth of any statements made in the argument.

City of Oregon City
Measure 3-435

ARGUMENT IN FAVOR

Business Backs Carnegie Library

The Oregon City Chamber of Commerce urges you to vote YES on Measure 3-435 so that together we can expand local library resources at the Carnegie Library without adding any new taxes!

Sound too good to be true? **By voting YES on Measure 3-435:**

Your taxes don't go up! In fact, you're already paying for the services to make this expansion a reality. Even though the funds are already available for the bond, the city charter states that citizens must vote on the sale of all bonds.

Our Oregon City Carnegie Library will be expanded at its existing site to serve a growing population. The expansion plan highlights the character of the original Carnegie Library, built in 1913, while providing for the needs of 54,000 people!

When the new square footage is added, **many more books will be on the shelves for you and your family, neighbors and even employees.** With more space, our library staff will have freedom to order new materials such as books, magazines and references.

Our library will be upgraded with much needed technology that will allow the Oregon City Carnegie Library to provide 21st century resources that other libraries are already providing their community of users. This will provide immeasurable assistance to job seekers, senior citizens and students.

Oregon City residents and businesses alike will take pride in a vibrant new community center at our Carnegie Library. A full range of programs and services, synonymous with good, public libraries, will once again be available here.

Potential employers and investors look for vibrant communities - locations with safe streets, strong schools, healthy recreation, good parks, and a 21st century library! **Since we're already paying for these services, let's vote our approval to build Oregon City a bigger, better Carnegie Library.**

Submitted on behalf of the Oregon City Chamber of Commerce

Amber Holveck, Executive Director
Oregon City Chamber of Commerce

(This information furnished by Amber Holveck, Oregon City Chamber of Commerce)

The printing of this argument does not constitute an endorsement by Clackamas County, nor does the county warrant the accuracy or truth of any statements made in the argument.

City of Oregon City
Measure 3-437

BALLOT TITLE

MEASURE APPROVING ANNEXATION OF 0.46 ACRES INTO OREGON CITY

QUESTION: Shall 0.46 acres along S. Columbine Court, south of South End Road be annexed into the Oregon City city limits?

SUMMARY: Annexation is the legal process to bring property into the city limits. Because of a failing septic system, Steve and June Taylor, the applicants and property owners, have asked the city to bring one 0.46 acre parcel of land located at 19328 S. Columbine Court into the city limits.

The annexation area is located within Oregon City's Urban Growth Boundary and is contiguous to property already located in the city limits. The property is currently zoned County FU-10 and will retain its FU-10 designation should annexation be approved. No development of the subject property is proposed. The City Commission has concluded that the proposal meets all state, regional and City requirements for annexation into the City and services can be adequately provided to the property.

EXPLANATORY STATEMENT

Annexation is the legal process to bring property into the city limits. Because of a failing septic system, Steve and June Taylor, the applicants and property owners, have asked the city to bring one 0.46 acre parcel of land located at 19328 S. Columbine Court into the city limits.

The annexation area is located within Oregon City's Urban Growth Boundary and is contiguous to property already located in the city limits. The property is currently zoned County FU-10 and will retain its FU-10 designation should annexation be approved. No development of the subject property is proposed. The City Commission has concluded that the proposal meets all state, regional and City requirements for annexation into the City and services can be adequately provided to the property.

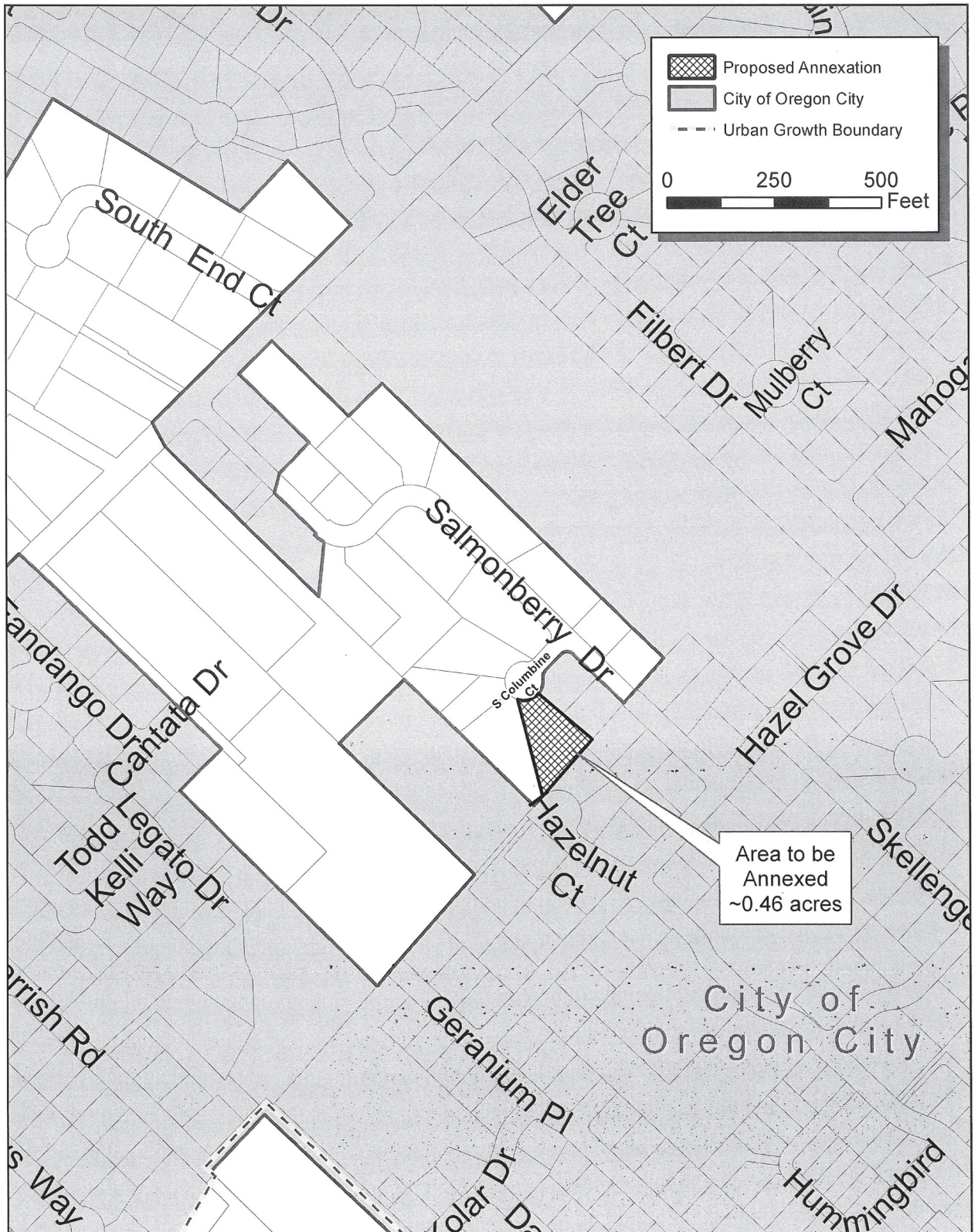
Submitted by:
Nancy Ide
City Recorder
City of Oregon City

NO ARGUMENTS IN FAVOR OF OR IN OPPOSITION TO THIS MEASURE WERE FILED

For complete filing of this measure visit our website at www.clackamas.us/elections/May2014.html or visit us at 1710 Red Soils Ct, Suite 100, Oregon City, OR 97045

The above information has not been verified for accuracy by the county.

City of Oregon City
Measure 3-437



The above information has not been verified for accuracy by the county. The above information has not been verified for accuracy by the county.

City of Portland
Measure 26-156

BALLOT TITLE

AMENDS CHARTER: CREATES WATER AND SEWER DISTRICT WITH ELECTED BOARD

QUESTION: Shall Portland create district not subject to city council control, with elected board, transfer city water, sewer services to it?

SUMMARY: Measure creates water and sewer district outside City Council or City Auditor supervision; transfers control of water and sewer operations and assets to board of seven uncompensated members elected (initially by plurality vote) for three year terms from zones approximating Portland Public School zones (area outside Portland Public School District not addressed). Board fills board vacancies by appointment. Persons disqualified as Board candidates: persons holding any elected position; persons formerly working or contracting with City related to water/sewer; current District contractors and employees. Earlier City employment disqualifies lawyer or auditor to work for District. Board can legislate; create civil and criminal liability; hire and fire employees; set rates; adopt budgets; provide for financial audits; purchase and condemn property; borrow funds; create City sewer and water bond liability; assess properties for water and sewer local improvement districts. City water and sewer employees transfer to District. District cannot mix Bull Run water except with water from existing well field, without emergency; cannot make watershed regulations less "protective," by undefined standard; cannot take certain other actions. Other provisions.

EXPLANATORY STATEMENT

No Explanatory Statement was filed, per OAR 165.022-0040(2).

NO ARGUMENTS IN OPPOSITION TO THIS MEASURE WERE FILED

For complete filing of this measure visit our website at www.clackamas.us/elections/May2014.html or visit us at 1710 Red Soils Ct, Suite 100, Oregon City, OR 97045

The above information has not been verified for accuracy by the county.

City of Portland
Measure 26-156

ARGUMENT IN FAVOR

END CITY HALL PET PROJECTS

Lower Water Rates

VOTE YES on MEASURE 26-156

FACTS about your water and sewer bill:

- **Portland has 3rd highest sewer rates** in the nation among large cities
- **Higher water rates than Phoenix, Arizona**
- Sewer rates rose 164% since 2000
- Water rates have risen 161%

(Sources: American Water Intelligence 2012 Rate Tariff, Portland Water Bureau)

- **Commissioner Nick Fish proposes water rate increase of 55%** over next five years (Water Bureau requested budget, 2-3-14)
- Lawsuit has identified **\$127 million in questionable water and sewer spending, including City Hall pet projects**

The Portland Public Water District Measure 26-156 will stop the spending of water and sewer money on City Hall pet projects.

Measure 26-156 converts Portland's utilities into a public water district with an independent elected board.

A Public Water District is not a new idea. The City of Eugene has managed its water system with an independent elected board since 1911. Eugene's water rates are 36% lower than Portland's. (<http://www.eweb.org/waterrates>)

Measure 26-156 will:

- End pet projects, by only allowing water money to be spent on water projects
- Require annual financial audits by an independent accountant
- Establish conflict-of-interest provisions where currently none exist
- All City residents still own and control all water and sewer assets
- Covers the whole City, including East Portland

Send a Message to City Hall

Please **Vote YES** on 26-156

Floy Jones and Kent Craford
Chief Petitioners, Portland Public Water District
www.waterreform.org

(This information furnished by Kent Craford, Portlanders For Water Reform)

The printing of this argument does not constitute an endorsement by Clackamas County, nor does the county warrant the accuracy or truth of any statements made in the argument.

Aurora Rural Fire Protection District No. 63 Measure 24-367

BALLOT MEASURE

AURORA RURAL FIRE PROTECTION DISTRICT NO. 63 GENERAL OBLIGATION BOND

QUESTION: Shall the District issue general obligation bonds not to exceed \$5,885,000? If the bonds are approved, they will be payable from taxes on property or property ownership that are not subject to the limits of sections 11 and 11b, Article XI of the Oregon Constitution.

SUMMARY: If approved, this measure would provide funds for capital costs including:

- The purchase of fire apparatus;
- Construction, furnishings, equipment and site improvements for a new fire station;
- Construction, furnishings, equipment and improvements for a training facility
- Upgrade existing fire apparatus and equipment;
- Purchase firefighting equipment and medical equipment; and
- Improve and renovate existing public safety facilities and pay bond issuance costs.

The Bonds would mature not later than twenty (20) years from the date of issuance. The measure is estimated to cost taxpayers an average of \$0.4980 per thousand of assessed value each year. For the owner of a home or property owner, the estimated annual average cost would be \$49.80 per \$100,000 of taxable assessed value.

The estimated tax cost for this measure is an ESTIMATE ONLY, based on the best information available from the County assessor at the time of the estimate.

EXPLANATORY STATEMENT

The Aurora Rural Fire Protection District #63 (ARFPD) provides emergency medical, fire suppression and prevention, and specialized rescue and HazMat services to approximately 6,000 citizens in a 64-square mile area. ARFPD serves the cities of Aurora and Donald as well as unincorporated portions of Marion and Clackamas Counties. ARFPD also protects eight miles of Interstate 5, six miles of State highway 99-E, and the Aurora State airport.

ARFPD has 4.5 full time employees and 30 volunteers who respond to more than 600 emergency incidents annually.

What does this measure call for?

Voters are being asked whether ARFPD should issue \$5,885,000 in general obligation bonds to:

- Purchase fire apparatus; this will include the replacement of two fire engines that are over 25 years old; and the addition of one for the proposed new station, also included is the purchase of a small water tanker and new brush firefighting vehicle.
- Construct and furnish one additional fire station in the center of the District;
- Make operational and safety improvements to the existing stations in Aurora and Donald including seismic upgrades to the unreinforced block structures that are at risk for collapse in the event of an earthquake;
- Construct and furnish a training center to assist in complying with national training standards ; and
- Purchase firefighting equipment and medical equipment.

If approved, bonds would be repaid over a maximum of 20 years from their issue date.

What would the cost be to the typical homeowner?

The Bonds would mature not later than 20-years from the date of issuance. The measure is estimated to cost tax payers an average of \$0.4980 per thousand of assessed value each year. For the owner of a home or property owner, the estimated annual cost would be \$49.80 per \$100,000 of taxable assessed value.

The estimated tax cost for this measure is an ESTIMATE ONLY, based on the best information available from the county assessor at the time of the estimate.

Submitted by:

Marc Anderson, Board President
Aurora Rural Fire Protection District

**NO ARGUMENTS IN OPPOSITION TO THIS
MEASURE WERE FILED**

For complete filing of this measure visit our website at www.clackamas.us/elections/May2014.html or visit us at 1710 Red Soils Ct, Suite 100, Oregon City, OR 97045

**Aurora Rural Fire Protection District No. 63
Measure 24-367**

ARGUMENT IN FAVOR

Vote Yes on 24-367 Support Fire Safety

The Board of Directors of the Aurora Rural Fire Protection District 63 requests District voters to approve a General Obligation Bond measure to update facilities, vehicles and apparatuses which are essential to providing fire and life safety services for our citizens.

After a long-range planning process which evaluated District capital needs for the next 20 years, the Board determined that these improvements are necessary to the continued provision of effective fire and life safety services for district residents.

The District would issue General Obligation Bonds not to exceed \$5,885,000. The estimated cost is .49 per \$1,000 of assessed value per year to provide funds for these capital projects. The bonds would be payable within 20 years.

Build a new Central Station on Ehlen Road near the Donald I-5 exit

- This new station is strategically located to serve growing needs of our District.
- Build and equip new training facility at Central Station, designed to be expandable to meet future needs within the operating tax base.
- Seismic upgrades of both the Donald and Aurora Stations (both built over 50 years ago).

Purchase of three Fire Engines and Vehicles

- Purchase Engines to replace the Aurora Station Engine, which is 26 years old, and the Donald Station Engine, which is 29 years old.
- Purchase an Engine for Central Station on Ehlen Road near I-5.
- One small tender, brings water to the fire, and one brush rig for Central Station.

The Board of Directors of the Aurora Rural Fire Protection District manages the resources of the District in a financially conservative way to assure that needed facilities, vehicles and apparatuses are available when District residents call 911 for fire and life safety services.

We ask District Voters for your YES vote on Measure 24-367 to support Fire and Life Safety.

Sincerely,
 Marc Anderson, Board President
 Greg Leo, Board Vice President
 Deb Garner, Director
 Donna Hammang, Director

(This information furnished by Gregory J Leo, Yes on 24-367 Committee)

The printing of this argument does not constitute an endorsement by Clackamas County, nor does the county warrant the accuracy or truth of any statements made in the argument.

**Aurora Rural Fire Protection District No. 63
Measure 24-367**

ARGUMENT IN FAVOR

**Support Fire and Life Safety
YES on 24-367**

As 2014 is underway, District 63 firefighters encourage voters to approve a General Obligation Bond measure to update apparatus, facilities and vehicles. These items are necessary to provide the community with Fire and Life Safety Services in the Aurora Fire District for the coming years.

Due to the age of current equipment and facilities, our Aurora engine being 26 years old, our Donald Engine at 29 years old, the Aurora Station and the Donald Station both over 50 years old, the Board has determined, after a lengthy planning process, updates are essential to the continued services and coverage to protect District residents.

The District would issue general Obligation Bonds not to exceed \$5,885,000. The estimated cost is .49 per \$1000 of assessed value per year to provide funds for these following improvements:

- Replace one Engine at the Aurora Station
- Replace one Engine at the Donald Station
- Build a Central Station and training facilities on Ehlen Road (near the Donald I-5 exit)
- 1 small Tender (water supply at fires) for the Central Station
- 1 Brush Rig for the Central Station
- Upgrades to the Aurora Station
- Upgrades to the Donald Station

By passing this Bond, we could fund the construction of a Central Station with up to date equipment, as well as a training facility. The Donald and Aurora Stations would receive seismic upgrades, as well as other facility improvements, and assure that facilities, apparatus, and vehicles are readily available.

We believe the General Obligation Bond request for capital needs is essential to the current and future of the Aurora Fire District Emergency Services.

Thank you for your continuing support, and we ask that you vote YES for Measure 24-367 to support Fire and Life Safety.

Sincerely,

Matt Yakes, District #63 Firefighters President
 Bobby Meyer, Battalion Chief

(This information furnished by Matt Yakes, Yes on 24-367 Committee)

The printing of this argument does not constitute an endorsement by Clackamas County, nor does the county warrant the accuracy or truth of any statements made in the argument.

Molalla Rural Fire Protection District #73

Measure 3-442

BALLOT TITLE

FIVE-YEAR LOCAL OPTION TAX FOR OPERATIONS

QUESTION: Shall the District levy \$.43 per \$1,000 for five years to provide operational services beginning in FY 2014-2015? This measure may cause property taxes to increase more than three percent.

SUMMARY: The Molalla Rural Fire Protection District #73 is seeking a five year local option tax to provide funding to maintain the current level of emergency services, including hiring 3 paramedic/firefighters. It will also provide equipment to those personnel and our volunteers and restore programs cut from previous budgets and will cover increasing costs of operating the District.

The proposed rate will raise approximately \$529,456 in 2014-2015; \$537,398 in 2015-2016; \$545,459 in 2016-2017; \$553,641 in 2017-2018; and \$561,946 in 2018-2019. The estimated tax cost for this measure is an ESTIMATE ONLY based on the best information available from the county assessor at the time of the estimate.

The estimated cost on a home assessed at \$200,000 would be \$86 per year.

EXPLANATORY STATEMENT

The Molalla Rural Fire Protection District is not a part of the city or county but is a "special service district" providing fire protection for 101 square miles and ambulance service to 350 square miles of Clackamas County including the City of Molalla. District personnel respond to fire and medical emergencies from fire stations in the City of Molalla and in the Mulino and Sawtell areas.

The Fire District's Board of Directors is requesting that the taxpayers of the district consider a 5 year local option levy for the specific purpose of and hiring three paramedic / firefighters and to restore programs cut because of inadequate staffing. Currently, with the increase in calls since 1990 the District cannot continue to rely solely on volunteer's response for emergency calls. This is not an effective or safe service level for the community and its residents.

Factors prompting the District's Board to submit this measure:

User fee revenue reduction due to past Medicare reform.

An unusually low permanent tax rate (\$0.7833) which is less than half of other Clackamas County Fire Districts. District growth and new construction will not sustain the increasing costs in emergency response.

Inadequate reserves for the purchase of fire apparatus & ambulance replacements as needed or to routinely set aside funding for that purpose.

The shortage of available volunteer responders during specific times of the day which would allow for a predictable and appropriate response.

The inability to fund any additional career staffing through our annual operations budget.

The population within a 5 mile radius of Molalla has risen from 10,332 in 1990 to 12,568 in 2013 for an increase of 21.6% (per Census Bureau). The population of our ambulance service area has increased to 25,000. In that same time period, emergency responses increased from 1082 to 2193 annually an increase of 102%. Career staffing has increased by one person (15%) while, with some periodic fluctuation in volunteer numbers have remained at the same level since the 1990's.

The district's increased population has not interpreted into a larger volunteer pool as might be expected despite varied recruitment methods.

The District's Board is presently unable to assure quality service to its citizens due to the unpredictability of staffing and that the issue be decided by the voters of the District.

The estimated cost on a home assessed at \$200,000 would be \$86.00 (\$0.24 cents per day).

Submitted by:
Vince Stafford, Fire Chief,
Molalla Rural Fire Protection District #73

**NO ARGUMENTS IN OPPOSITION TO THIS
MEASURE WERE FILED**

For complete filing of this measure visit our website at www.clackamas.us/elections/May2014.html or visit us at 1710 Red Soils Ct, Suite 100, Oregon City, OR 97045

The above information has not been verified for accuracy by the county.

The above information has not been verified for accuracy by the county.

**Molalla Rural Fire Protection District #73
Measure 3-442**

ARGUMENT IN FAVOR

Molalla Firefighters are asking for your vote to increase our staffing levels to better serve the community. Our goal has always been to do whatever it takes to keep our community safe and provide urgent emergency medical care to those in need. We have continued to do this throughout the years to the best of our ability with minimal career staff and an exceptional volunteer force as our Fire Stations 911 call volume has increased to one of the highest in Clackamas County. It is no longer feasible to handle the call volume with a single ambulance and paramedic for the majority of each day. The time has come to staff two ambulances with firefighter/paramedics to quickly respond to emergencies.

Molalla Fire District serves 26,000 residents and provides fire protection covering 100 square miles. Our Ambulance Service Area covers 350 square miles and provides ambulance transport to the cities of Molalla, Mulino, Colton, and areas of Canby and Beavercreek. In 2013, there were nearly 2,200 emergency responses with 1,560 patient contacts and 1,120 ambulance transports by Molalla Fire Personnel. There were an additional 90 transports by mutual aid ambulances as there was no ambulance or personnel available to respond, creating a long response time. Thirty-five percent of our emergency responses were overlapping, meaning that there were two or more emergencies occurring at the same time. Our current staffing has only one paramedic available on weeknights and weekends. The Districts current tax rate is less than half of the County average and ambulance revenue continues to decrease.

Molalla Fire District has been fortunate enough to recently receive a Federal grant that will pay for six firefighter/paramedics for two years. A "yes" vote will retain three of these valuable employees after the grant expires. We cannot afford to step back to our current staffing levels, it just isn't safe. Help us help you! PLEASE VOTE YES ON 3-442.

Molalla Professional Firefighters

(This information furnished by Michael Bennington, Molalla Professional Firefighters)

The printing of this argument does not constitute an endorsement by Clackamas County, nor does the county warrant the accuracy or truth of any statements made in the argument.

Election Results on Cable Television



The following cable television channels will broadcast Clackamas County election results:

Beavercreek Telephone.....	Channel 98
Canby Telephone Assn.....	Channel 21
Comcast	Channel 30
Comcast (Milwaukie).....	Channel 29 / 30
Clear Creek Television.....	Channel 20
Colton Cable.....	Channel 21
Frontier Communications	Channel 40
Reliance Connects (Estacada).....	Channel 75
Wave Broadband.....	Channel 15
Wave Broadband (Sandy).....	Channel 9

Additional Clackamas County cable television channels may broadcast returns. Check local schedules for the most up-to-date listings.

ELECTION RESULTS ON THE INTERNET

<http://www.clackamas.us/elections/results.html>

Enter the above web address into your computer's internet browser and you can access current and archived results for elections conducted in Clackamas County.

Shortly after 8:00 p.m. on Election Day, you can navigate to current election returns with just a few clicks of the mouse.

As ballot processing continues throughout the evening of the election, updates will be posted to the Elections Division's web site.

Molalla Rural Fire Protection District #73

Measure 3-443

BALLOT TITLE

MOLALLA RURAL FIRE PROTECTION DISTRICT NO. 73 GENERAL OBLIGATION BOND

QUESTION: Shall the District issue general obligation bonds not to exceed \$3,190,000? If the bonds are approved, they will be payable from taxes on property or property ownership that are not subject to the limits of sections 11 and 11b, Article XI of the Oregon Constitution.

SUMMARY: If approved, this measure would provide funds for capital costs including:

- The purchase of fire apparatus;
- Construction, furnishings, equipment and improvements for a training facility
- Upgrade existing fire apparatus and equipment;
- Purchase firefighting equipment and medical equipment; and
- Improvement, construction, furnishings, equipment and renovation of existing public safety facilities and pay bond issuance costs.

The Bonds would mature not later than eleven (11) years from the date of issuance. The measure is estimated to cost taxpayers an average of \$0.2624 per thousand of assessed value each year. For the owner of a home or property owner, the estimated annual average cost would be \$26.24 per \$100,000 of taxable assessed value.

The estimated tax cost for this measure is an ESTIMATE ONLY, based on the best information available from the County assessor at the time of the estimate.

EXPLANATORY STATEMENT

Molalla Fire District provides fire protection over approximately 101 square miles, and over 350 square miles for ambulance coverage. This coverage includes the City of Molalla, Mulino, and surrounding areas. The District provides fire protection, emergency medical transport, and life safety education. It is staffed by six paid career and 58 volunteer firefighters and emergency medical personnel. Molalla Fire District is a special service district, governed by a Board of Directors elected by the District residents. Molalla Fire District is separate from the City of Molalla coherence.

By vote, the Board of Directors approved placement of a bond measure on the May 20, 2014, general election ballot. If approved, this measure would provide funding for the purchase of water tenders, fire engines, modernizing District response vehicles, updating, equipping and furnishing the District's stations, and to purchase firefighting and medical equipment.

The Board of Directors placed the measure on the ballot for these reasons:

1. The District has no water tenders; its fire engines are an average of 22 years old; rescue vehicles have 180,000 miles on them and are in need of replacement. Two of the Districts engines are 28 years old and have open cabs which makes firefighters ride out in the weather. These engines do not meet national safety standards.
2. The Districts Self Contained Breathing Apparatus (SCBA) are out dated and are in need of being updated to meet national safety standards. SCBA's are what firefighter use to breath with when they enter a burning structure. The SCBA's have to have multiple repairs after use.
3. Volunteer firefighters and EMT's allow the District to maintain current service levels. Updated equipment and stations will allow operation and provide updated training and living spaces for volunteers and staff. At this time volunteers sleep on folding cots. Current equipment

makes it difficult to meet increasing training, safety, and insurance requirements as mandated by federal, state, and national fire protection organization.

Submitted by:
Vince Stafford, Fire Chief,
Molalla Rural Fire Protection District #73

**NO ARGUMENTS IN FAVOR OF OR IN OPPOSITION TO THIS
MEASURE WERE FILED**

For complete filing of this measure visit our website at www.clackamas.us/elections/May2014.html or visit us at 1710 Red Soils Ct, Suite 100, Oregon City, OR 97045

The above information has not been verified for accuracy by the county.

The above information has not been verified for accuracy by the county.

Tualatin Valley Fire & Rescue

Measure 34-211

BALLOT TITLE

REPLACEMENT LOCAL OPTION LEVY FOR FIRE AND MEDICAL EMERGENCY RESPONSE

QUESTION: Shall TVF&R maintain fire and medical emergency response by levying 45¢ per \$1,000 AV for five years, beginning in 2015. This measure may cause property taxes to increase more than three percent.

SUMMARY: Voters first approved a local option levy for Tualatin Valley Fire & Rescue (TVF&R) in 2000 and renewed it in 2004 and 2008. This proposed levy would replace the current levy, which expires June 2015.

The replacement levy would keep 42 current firefighter medics. These firefighters help ensure each crew can take immediate action at complex incidents like fires, heart attacks, car crashes, and rescue situations.

Additionally, an increase in 9-1-1 calls, traffic congestion, and an aging population are impacting emergency response throughout the service area. The replacement levy would also add up to 44 firefighter medics, apparatus, and contribute towards new stations. These resources would help TVF&R meet its objective of fast and effective emergency response.

Staff that support safe and reliable emergency operations would also be funded.

The replacement levy rate is 45¢ per \$1,000 AV, a 20¢ increase over the current rate. For a typical home with an assessed value of \$230,000, the annual increase would be \$46.

If the levy fails, property taxes on a typical home would decline \$58.

The replacement levy is projected to raise \$109,280,075 over five years:

2015-16	\$20,277,124
2016-17	\$21,037,516
2017-18	\$21,826,423
2018-19	\$22,644,914
2019-20	\$23,494,098

EXPLANATORY STATEMENT

Tualatin Valley Fire & Rescue (TVF&R) provides firefighting, emergency medical, rescue, and fire prevention services. TVF&R serves residents and businesses in the cities of Beaverton, Durham, King City, Rivergrove, Sherwood, Tigard, Tualatin, West Linn, and Wilsonville, and unincorporated portions of Washington, Clackamas, and Multnomah counties.

Why is this called a replacement levy?

It would take the place of the current levy that expires June 2015. It would appear for the first time on the November 2015 property tax bill.

What is its purpose?

The levy supports TVF&R's highest priority of fast and effective emergency response by:

1. Retaining 42 current firefighter medics hired since 2000. These firefighters help ensure each crew has enough personnel to immediately enter a burning building and to provide immediate life-saving care at medical and rescue incidents.
2. Adding up to 44 firefighter medics, apparatus, and contributing towards new stations in areas where response challenges exist.

Why are new personnel and stations proposed?

Consistent with industry standards, TVF&R's travel time objective is 5 minutes 12 seconds or less. Increases in 9-1-1 calls, traffic congestion, and an aging population are contributing to longer response times.

Additional firefighters, at new and existing sites within

TVF&R's network, would improve response times and increase the reliability of current stations to serve their immediate neighborhoods. Positions that support safe and reliable emergency operations such as fire prevention, training, and apparatus maintenance would also be funded.

What steps has TVF&R taken to address response challenges?

1. Single-person paramedic units respond to less severe incidents (serving 8% of calls).
2. Crews review incident data and address community risks through education (e.g., fall reduction for senior care facilities, fire safety for apartment managers).
3. Partnerships with businesses have reduced false alarm calls by 28% since 2006.
4. A new Tigard station was constructed and staffed in 2009.
5. Staff works with city, county, and state transportation agencies to encourage improvements that facilitate rapid response.
6. "Citizen responders" to cardiac patients (before paramedics arrive) are engaged through Hands Only CPR education, TVF&R's PulsePoint app, and public access defibrillators which can shock a failing heart.

If the replacement levy is approved, what is the impact on a homeowner's property tax?

The replacement levy has a tax rate of 45¢ per \$1,000 of assessed value*, a 20¢ increase over the current rate. This would result in a total levy cost of \$104 for a typical home, a \$46 increase over the expiring levy.

*Assessed value is different from real market value and is listed on the property tax bill.

What is the impact if the replacement levy fails?

Response challenges would continue to degrade the speed and effectiveness of emergency response services. While maintaining emergency response services would remain TVF&R's priority, the current levy provides 14% of total District operating revenues. As a result, reductions in staffing and operations would be required. Property taxes on a typical home with an assessed value of \$230,000 would decline by \$58/year.

More information is available at www.tvfr.com

Submitted by
Mike Duyck
Tualatin Valley Fire & Rescue

NO ARGUMENTS IN OPPOSITION TO THIS MEASURE WERE FILED

For complete filing of this measure visit our website at www.clackamas.us/elections/May2014.html or visit us at 1710 Red Soils Ct, Suite 100, Oregon City, OR 97045

The above information has not been verified for accuracy by the county.

The above information has not been verified for accuracy by the county.

Tualatin Valley Fire & Rescue Measure 34-211

ARGUMENT IN FAVOR

PHYSICIANS SUPPORT 34-211

A minute delay, or even seconds, in emergency response has a huge impact for individuals suffering from a heart attack, acute stroke, severe trauma, and other medical emergencies. **Please consider this when voting on TVF&R's replacement levy.**

Take the example of cardiac arrest.

Slightly larger than a human fist, the human heart beats continuously over your lifetime, 80,000 to 100,000 times a day, pumping approximately 2,000 gallons of blood to your body.

In sudden cardiac arrest, an electrical malfunction causes your heart to suddenly stop beating, ending blood flow to your brain and body. The most important therapy is an electrical countershock, and each minute of delay brings a 10% decrease in survival.

The Cardiac Arrest Chain of Survival must start immediately:

- Calling 9-1-1
- Bystander CPR
- Countershock with a defibrillator (AED)
- Advanced medical therapies to support the heart and brain from firefighter paramedics until hospital staff take over

TVF&R promotes each link in this chain.

- As an early champion of "hands only CPR" instruction by 9-1-1 dispatchers.
- As Oregon's first fire department to promote the "PulsePoint" app, TVF&R tracks AEDs in hundreds of high-use locations and recruited over 3500 CPR-trained citizen responders who are alerted if a cardiac arrest occurs close.
- By equipping and training police departments on AED use.
- As an industry leader in quickly sharing patient information between on-scene paramedics and receiving hospital staff.

TVF&R's replacement levy addresses the last two links in our community's chain of survival. It retains 42 current firefighter medics and helps fund several additional new fire stations and new firefighters to reverse the trend of long response times.

TVF&R is smart, adaptive, and driven by data towards new strategies that best serve our changing community. Measure 34-211 ensures our firefighters have the resources to be fast and effective.

Please vote "Yes" on 34-211.

Oregon Chapter, American College of Emergency Physicians

(This information furnished by Melissa Johnson, MD, President, Oregon Chapter, American College of Emergency Physicians)

The printing of this argument does not constitute an endorsement by Clackamas County, nor does the county warrant the accuracy or truth of any statements made in the argument.

Tualatin Valley Fire & Rescue Measure 34-211

ARGUMENT IN FAVOR

Expect A Good Return on Your Investment

We are citizen volunteers who participate in TVF&R's annual budget process.

We are acutely aware that our input can impact your property tax bill, and we understand that **you want the cost of service to be as value-driven as possible.**

We also understand that when something bad happens to you or your family, **you want TVFR's firefighters and paramedics fast and ready to act.**

As Budget Committee members, **our job is to balance these two competing interests.**

TVF&R provides excellent stewardship of your tax dollars by exercising prudent financial controls and emphasizing long-term stability. Others share this view, including Moody's Investment Services, which rates TVFR's bonded debt Aaa, the best credit rating possible.

As part of its conservative financial management, **TVF&R has maintained the same local option levy tax rate for the past 14 years.** At the same time, it utilizes cost-effective strategies to meet its public safety mission such as:

- Single-person paramedic units respond to less serious incidents rather than a four-person engine crew.
- Active follow-up with commercial property owners reduced false alarms 28% since 2006.
- Partnerships with businesses, apartment managers, and local governments reduce community risks through education.

Demographic changes and trends in 9-1-1 call volume make it clear that demands on TVF&R firefighters and paramedics will continue to increase. With that and **our concern about long travel times for TVF&R crews** in mind, we are fully supportive of the proposed replacement levy.

By retaining 42 current firefighters and strategically adding additional personnel and stations, **the replacement levy ensures that we meet the community's top priority for TVF&R: fast and effective emergency response.**

TVF&R is keenly focused on the future. This levy addresses today's operational challenges and positions TVF&R to maintain the service you have come to expect when you need them the most.

Respectfully submitted:

TVFR Budget Committee

Angie Fong
Paul Leavy
James Petrizzi
Michael Smith
Jon Walsh

(This information furnished by Joe Walsh, Tualatin Valley Fire & Rescue Budget Committee)

The printing of this argument does not constitute an endorsement by Clackamas County, nor does the county warrant the accuracy or truth of any statements made in the argument.

Tualatin Valley Fire & Rescue Measure 34-211

ARGUMENT IN FAVOR

Seniors for Measure 34-211

We have lived in our home for 39 years. We raised three children here, and we hope we can live out the rest of our lives in this special place.

We're lucky – we have never called 9-1-1. Richard's background as a retired physician means we are practical about our health though. We are in our mid and late-70's and we exercise every day, but **we know that we will eventually need to make that 9-1-1 call.**

That is one of the reasons we are big supporters of TVF&R's replacement levy. Count us in for two "YES" votes.

We are active people, and we have little interest in anything less than independent lives.

Knowing that we can count on our neighborhood firefighters and paramedics when we have a medical emergency, or a fire, makes us feel secure.

We have high expectations of our public agencies. TVF&R's drive to evolve as an organization to meet the needs of our changing community impresses us. It's clear that they provide high quality service at a good value to the taxpayer. A good example is the way they send a single paramedic in a car to less serious calls, instead of four firefighters and a big fire engine. That makes great sense, but our friends who live elsewhere remind us that it's not common. **TVF&R seems way ahead of the curve.**

We are positive people, so it's hard to imagine that the replacement levy won't be approved. **"Yes" on Measure 34-211 ensures that TVF&R can adjust to our changing community and remain responsive to what we all want – fast and reliable emergency service. And it takes the place of a levy voters approved three times!**

We've had 39 great years in our home and our neighborhood firefighters and paramedics are one reason why we believe we can have many more.

Please join us in voting "YES" on Measure 34-211.

Marcy Lowy
Richard Lowy, MD

Tualatin Valley Fire & Rescue Measure 34-211

ARGUMENT IN FAVOR

A grateful mother supports the replacement levy

I was home with my two active children on July 10, 2013. My three year-old daughter was playing "tea" in another room when I heard her cry out.

I found her at the bottom of two small steps leading into the playroom.

Scooping her into my arms, I asked what hurt. **My little girl, who always has something to say, was silent and unresponsive.** Then her back arched, her eyes rolled back into her head, and her lips went blue.

In full panic mode I dialed 9-1-1. Within moments, the dispatcher told me responders were on the way.

"Please hurry!" was all I could say.

I heard the sirens. Fortunately, we live just two miles from a fire station. Within minutes firefighter paramedics were helping us.

Each had a job: issuing instructions, providing advanced medical care to my daughter, taking notes to share with hospital staff, comforting my horribly frightened son, calling and reassuring my husband, transferring my daughter to the ambulance, securing my son's car seat alongside so we could join her, and locking the door as they left.

These collective actions made an absolutely terrifying situation somewhat bearable.

It took many weeks, but my daughter has fully recovered. She has little memory of that day, but whenever we see a fire truck, she makes a comment about "the day I bonked my head."

Parents want to believe their children will always be healthy. Mine are today, but only because of the fast, intelligent, and compassionate care of TVF&R firefighter paramedics.

I will never forget that day, nor will I assume it can't happen again to people I love.

I always want TVF&R firefighters close, fast, and ready to take action no matter what the emergency. I will vote "yes" on Measure 34-211 to ensure that for my family. I would strongly encourage you to do the same for yours.

Tara Hipps

(This information furnished by Marcy Lowy and Richard Lowy)

The printing of this argument does not constitute an endorsement by Clackamas County, nor does the county warrant the accuracy or truth of any statements made in the argument.

(This information furnished by Tara Hipps and David Hipps)

The printing of this argument does not constitute an endorsement by Clackamas County, nor does the county warrant the accuracy or truth of any statements made in the argument.

Tualatin Valley Fire & Rescue Measure 34-211

ARGUMENT IN FAVOR

MAYORS SUPPORT MEASURE 34-211

What do our cities have in common with communities like Aloha, Bethany, Bull Mountain, Cedar Hills, Cedar Mill, Cooper Mountain, Garden Home, Metzger, Raleigh Hills, Rosemont, Pete's Mountain, Progress, Skyline, and Stafford?

We are all served by Tualatin Valley Fire and Rescue (TVF&R).

As mayors, we have high expectations of our firefighters and paramedics. When our citizens have an emergency, we want them to receive a speedy response by well-trained, caring professionals who take decisive action.

We appreciate the other creative ways TVF&R works to meet the community's expectations, like training and equipping our police officers to help with cardiac resuscitation and using educational strategies in senior care facilities to reduce preventable falls.

Measure 34-211 replaces a local option levy that expires in June 2015. The goal of that levy, which voters approved three times, is to ensure each TVF&R crew has enough staff to take immediate action at serious incidents like house fires, cardiac arrests, and injury motor vehicle accidents.

Measure 34-211 also responds to changes happening in our communities. Each year there is an increase in the percent of our population that is 65 and older and 85 and older, and both correlate to increasing 9-1-1 calls and the time that firefighter paramedics need to spend on scene with patients. Second, traffic congestion is a growing challenge for TVF&R.

Measure 34-211 retains 42 current TVF&R firefighters and paramedics, and it makes strategic investments in additional personnel and stations to ensure the fast and reliable emergency response that we all expect. At \$46 a year in new taxes for a typical home, we think that's a great value for a priority public service.

Please join us in voting "YES" on Measure 34-211.

Mayor Doyle, Beaverton
Mayor Schirado, Durham
Mayor Shay, King City
Mayor Kibbey, Rivergrove
Mayor Middleton, Sherwood
Mayor Cook, Tigard
Mayor Ogden, Tualatin
Mayor Kovash, West Linn
Mayor Knapp, Wilsonville

(This information furnished by Brian Smith)

The printing of this argument does not constitute an endorsement by Clackamas County, nor does the county warrant the accuracy or truth of any statements made in the argument.

Tualatin Valley Fire & Rescue Measure 34-211

ARGUMENT IN FAVOR

Help Us Help You

I am pleased to write on behalf of the men and women who proudly serve as firefighters and paramedics for Tualatin Valley Fire & Rescue.

First, let me pass along an important message from all of us – **thank you.** Your past support for emergency response staffing and equipment allows us to protect your family and home, while ensuring firefighter safety. With your help, **we responded to over 35,000 emergencies in 2013, provided high quality service, and sustained no major injuries.**

As with any investment, we are happy to account for the support you provide TVF&R.

- Your firefighters are multifaceted professionals. We understand that we often engage with people on the worst day of their life. When that day comes, **you will receive the highest quality emergency care and will be treated as we want our own families to be treated.**
- Through training, physical conditioning, and constant care for our apparatus (fire engines and ladder trucks) and equipment; **we are ready to respond quickly to your emergency.**
- We are equally committed to using education and other prevention strategies to reduce incidents in the communities we serve. **The best emergency is the one that doesn't happen.**

Because of Oregon's limited-duration levies, you have a chance to consider the value of your firefighters and paramedics every five years. TVF&R's current levy expires in June 2015. **Approval of Measure 34-211 will replace the current levy and allow us to meet your expectation of fast and effective fire and medical response for the next five years.**

As you read this, TVF&R firefighters are poised and ready to respond when you need us. Your support of this replacement levy will ensure that this remains true for the next five years.

Please join us in voting "Yes" for the replacement levy for the fast and effective response it will provide.

Rocky L. Hanes, President
Tualatin Valley Fire Fighters
IAFF Local 1660

(This information furnished by Brian Smith)

The printing of this argument does not constitute an endorsement by Clackamas County, nor does the county warrant the accuracy or truth of any statements made in the argument.

Tualatin Valley Fire & Rescue Measure 34-211

ARGUMENT IN FAVOR

TVF&R BOARD SUPPORTS MEASURE 34-211

As the voter-elected Board of Directors for Tualatin Valley Fire & Rescue (TVF&R), we are referring this replacement levy to the ballot for these reasons:

1. We understand the public's #1 priority for TVF&R is fast and effective emergency response.

The levy retains 42 current TVF&R firefighter medics. They are critical to meeting the federal safety mandate of "two in, two out." This allows a crew of four to immediately send two firefighters into a burning building to make a rescue. This staffing also allows immediate action at motor vehicle accidents and serious medical incidents.

2. The levy improves response times that have grown too long.

Increases in 9-1-1 calls and traffic congestion are two of several factors pushing response times in the wrong direction. Additional firefighter medics working from new and existing stations will significantly improve the speed of emergency response.

3. Many other strategies have come before this replacement levy request.

TVF&R is much more than a reactive, respond when the bell goes off, fire department. Our personnel work with commercial property owners to significantly reduce false alarms, use single person units to respond to 8% of calls that are less severe, target community risks with education strategies, and employ alternative resources such as volunteers and citizen CPR responders to help provide responsive service at a good value.

4. The replacement levy is part of a long-term plan.

Our current levy expires in June 2015 and was first approved in 2000 (renewed in 2004 and 2008). The replacement levy was developed based on an exhaustive review of incident response data. That review makes us confident that TVF&R will meet the community's expectation of "fast and effective" fire and emergency medical operations for at least ten years.

Please join us in voting "YES" on Measure 34-211.

Robert Wyffels, President
Randy Lauer, Vice President
Gordon Hovies, Secretary
Clark Balfour, Board Member
Brian Clopton, Board Member

*(This information furnished by Robert Wyffels, President,
Tualatin Valley Fire & Rescue Board of Directors)*

The printing of this argument does not constitute an endorsement by Clackamas County, nor does the county warrant the accuracy or truth of any statements made in the argument.

Some Common Vote-by-Mail Mistakes

Avoid these mistakes when signing and returning your ballot, and make sure your vote gets counted!

Letting your spouse (or child or parent) sign your ballot envelope: Some families like to make voting a communal event, but make sure the envelope you sign is your own, and doesn't belong to some other family member. If the signature on the envelope doesn't match the pre-printed name, the ballot will be set aside and not tallied until we can resolve the mistake.

Signing by Power of Attorney: Don't do it. If a voter is unable to sign, a Signature Attestation form may be obtained so that the voter is able to use a rubber stamp of their signature. Contact the election office at 503.655.8510.

Saving a stamp by putting two ballots in one envelope: Don't do it. Both ballots will be rejected.

Forgetting to use the secrecy envelope: First of all, don't panic! And don't bother mangling the return envelope to re-open it just because you forgot the secrecy envelope. Your vote will still be confidential and it will be counted.

Waiting until Election Day to mail your ballot: Mail your ballot back as soon as you can. The Postal Service simply cannot get a ballot from the mailbox to our office in the space of one day, and (it can't be said often enough) the postmark does not count. Waiting until Election Day to return the ballot practically ensures that your vote will *not* be counted, but if you do wait that long, please make use of one of our official drop sites (see the list on page 3-44).



Drop Sites in Clackamas County

Ballots for the May 20, 2014 Special District Election may be deposited at any of the following locations during regular business hours beginning Thursday, May 1, and continuing until 8:00 p.m. on Tuesday, May 20 (Election Day).

Current hours of operation (as of publication) are listed below. Remember, ballots must be deposited at a drop site by 8:00 p.m. on Election Day, even if the location is open later. Ballots returned to drop sites **do not** require postage.

If you have any questions, please call the Elections Division at **503.655.8510**.

OUTDOOR BALLOT DROP BOXES

These secure outdoor ballot drop sites may be accessed 24 hours a day, but will be locked at 8:00 p.m. on Election Day.

Canby City Hall	182 N. Holly St., Canby	Phone: 503.266.4021
Canby McDonald's	709 SW First St., Canby	Phone: 503.266.5900
ColtonTel	20983 S. Hwy 211, Colton	Phone: 503.824.3211
Estacada City Hall	475 SE Main St., Estacada.....	Phone: 503.630.8270
Oak Lodge Library	16201 SE McLoughlin Blvd., Oak Grove	Phone: 503.655.8543
Oregon City City Hall	625 Center St., Oregon City	Phone: 503.657.0891
Sandy City Hall (drive-up)	39250 Pioneer Blvd., Sandy	Phone: 503.668.5533
West Linn City Hall	22500 Salamo Rd., West Linn	Phone: 503.657.0331

INDOOR BALLOT DROP BOXES

Damascus City Hall
19920 S.E. Hwy. 212, Damascus
Phone: 503.658.8545
Mon - Fri8:00 a.m. - 5:00 p.m.
Election Day8:00 a.m. - 8:00 p.m.

Estacada Library
825 NW Wade, Estacada
Phone: 503.630.8273
Mon & Wed10:00 a.m. - 7:00 p.m.
Tue & Thu11:00 a.m. - 7:00 p.m.
Fri11:00 a.m. - 5:00 p.m.
Sat & Sun12:00 p.m. - 5:00 p.m.
Election Day - Open until 8:00 p.m.

Gladstone Library
135 E. Dartmouth St., Gladstone
Phone: 503.656.2411
Mon-Thu10:00 a.m. - 8:00 p.m.
Fri, Sat11:00 a.m. - 5:30 p.m.
SunCLOSED

Happy Valley City Hall
16000 SE Misty Dr., Happy Valley
Phone: 503.783.3800
Mon - Fri8:00 a.m. - 5:00 p.m.
Election Day - Open until 8:00 p.m.

Hoodland Library
68256 E. Hwy. 26, Welches
Phone: 503.622.3460
Mon.....11:00 a.m. - 7:00 p.m.
Tue - Sat11:00 a.m. - 6:00 p.m.
SunCLOSED
Election Day - Open until 8:00 p.m.

Lake Oswego Library
706 4th St., Lake Oswego
Phone: 503.636.7628
Mon - Thu10:00 a.m. - 9:00 p.m.
Fri, Sat10:00 a.m. - 6:00 p.m.
Sun1:00 p.m. - 6:00 p.m.

Ledding Library of Milwaukie
10660 S.E. 21st Ave., Milwaukie
Phone: 503.786.7580
Mon - Thu10:00 a.m. - 9:00 p.m.
Fri, Sat10:00 a.m. - 6:00 p.m.
Sun12:00 p.m. - 6:00 p.m.

Molalla Library
201 E. 5th St., Molalla
Phone: 503.829.2593
Mon - Thu10:00 a.m. - 8:00 p.m.
Fri, Sat10:00 a.m. - 5:00 p.m.
Sun12:00 p.m. - 5:00 p.m.

Oak Lodge Library
16201 SE McLoughlin Blvd., Oak Grove
Phone: 503.655.8543
Mon.....10:00 a.m. - 6:00 p.m.
Tue - Thu12:00 p.m. - 8:00 p.m.
Fri, Sat10:00 a.m. - 6:00 p.m.
Sun12:00 p.m. - 6:00 p.m.

Sandy Library
38980 Proctor Blvd., Sandy
Phone: 503.668.5537
Mon - Fri10:00 a.m. - 7:00 p.m.
Sat10:00 a.m. - 5:00 p.m.
Sun1:00 p.m. - 5:00 p.m.
Election Day - Open until 8:00 p.m.

Sunnyside Library
13793 SE Sieben Park Way,
Clackamas
Phone: 503.794.3883
Mon10:00 a.m. - 6:00 p.m.
Tue - Thu12:00 p.m. - 8:00 p.m.
Fri, Sat10:00 a.m. - 6:00 p.m.
Sun12:00 p.m. - 6:00 p.m.

West Linn Library
1595 Burns St., West Linn
Phone: 503.656.7853
Mon - Wed11:00 a.m. - 8:00 p.m.
Thu, Fri10:00 a.m. - 6:00 p.m.
Sat, Sun12:00 p.m. - 5:00 p.m.

Wilsonville Library
8200 S.W. Wilsonville Rd.,
Wilsonville
Phone: 503.682.2744
Mon - Thu10:00 a.m. - 8:00 p.m.
Fri, Sat10:00 a.m. - 6:00 p.m.
Sun1:00 p.m. - 6:00 p.m.

Clackamas County Elections
1710 Red Soils Ct., Oregon City
Phone: 503.655.8510
Mon - Thu8:30 a.m. - 5:00 p.m.
Fri8:30 a.m. - 3:00 p.m.
Election Day ...7:00 a.m. - 8:00 p.m.

*Ballot drop box in front of building
is available 24 hours every day.*