

# Clackamas County Climate Action Plan

CATF Workshop: Consumption-based  
emissions and resilience actions

September 29th, 2022



# Land Acknowledgement

*What we now call Clackamas County is the traditional lands and waterways of the Clackamas, Chinook Bands, Kalapuya, Kathlamet, Molalla, Multnomah, Tualatin, Tumwater, Wasco, and many other tribes of the Willamette Valley and Western Oregon. We will never be able to name every tribe that visited or lived upon this land because these communities frequently traveled for trade and other reasons. The Indigenous people lived, traded, and navigated along great rivers and tributaries presently named the Clackamas, Molalla, Pudding, Sandy, and Willamette. Many of the original inhabitants of this land died from disease, war, and other conflicts. Those that survived these tragedies were forcibly removed and relocated by European settlers and the United States Government because of the land's value. Today, their descendants live on, still carrying on the traditions and cultures of their ancestors.*

*We honor the Native American people of Clackamas County as a vibrant, foundational, and integral part of our community. We respectfully acknowledge Wy'east, also known as Mount Hood, and Hyas Tyee Tumwater, also known as Willamette Falls, as sacred sites for many Native Americans. We thank those who have connection to this land and serve as stewards, working to ensure our ecosystem stays balanced and healthy*

## **WELCOME & INTRODUCTIONS**

Who's in the Room?

# Today's Session Objectives

1. To *consult* on implementation options, to move forward with climate action in Clackamas County.
2. To *involve* all interested parties in understanding community values, aspirations, and the climate readiness for the Climate Action Plan.

# Today's Agenda

- Welcome and Introductions
- Review of last meeting and evaluations
- Project narrative
- Pre-read questions
- Adaptation and resilience actions
- Consumption-based emissions actions
- Next steps

# What we heard from last meeting's evaluations

5 responses

**75%**

**Felt they better understand Clackamas County's Climate Action planning process.**

**25% strongly agree and 50% agreed**

**75%**

**Felt that this session was well facilitated.**

**25% strongly agree and 50% agreed**

**80%**

**There was enough information presented for me to participate effectively.**

**20% disagreed**

## Scope of Engagement vs Project

**Universe of concerns and interests important to various affected parties.**

---

**Concerns and interests that that can be addressed in this process.**

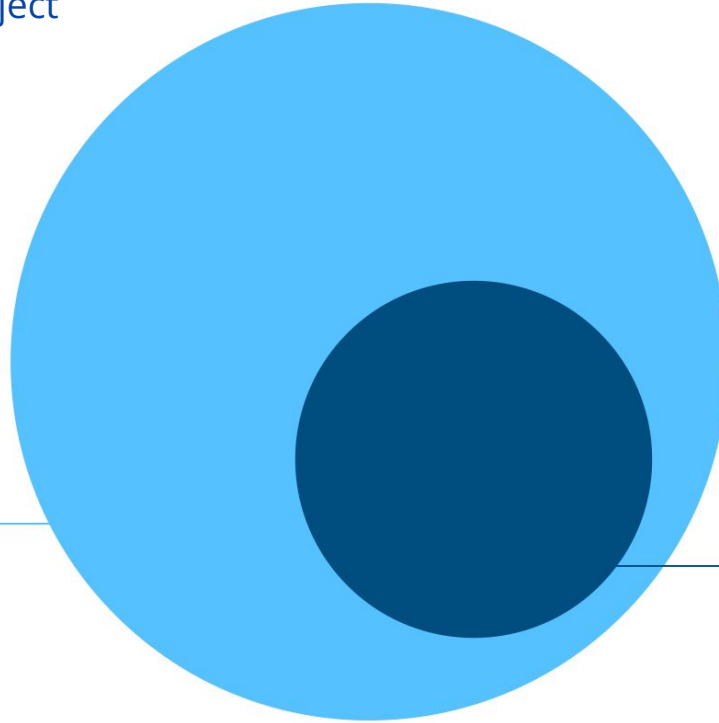
---

**Scope of Project**

---

**Scope of Engagement**

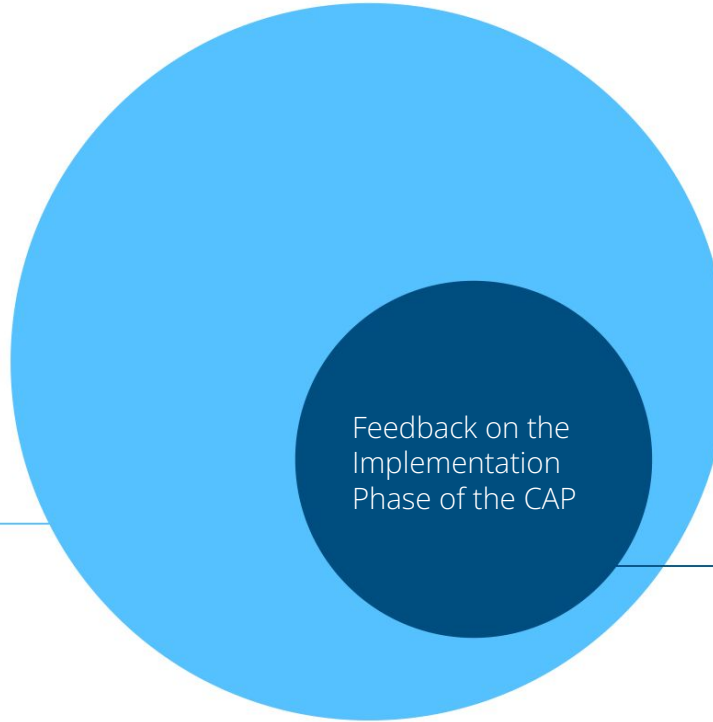
---



Scope of Engagement at **Current Stage** of Clackamas County's Climate Action Plan

**Universe of concerns and interests important to various affected parties.**

---



**Concerns and interests that that can be addressed in this **phase of the process.****

---

**Scope of Project**

---

**Scope of Engagement**

---



# Operating Values (created last meeting)

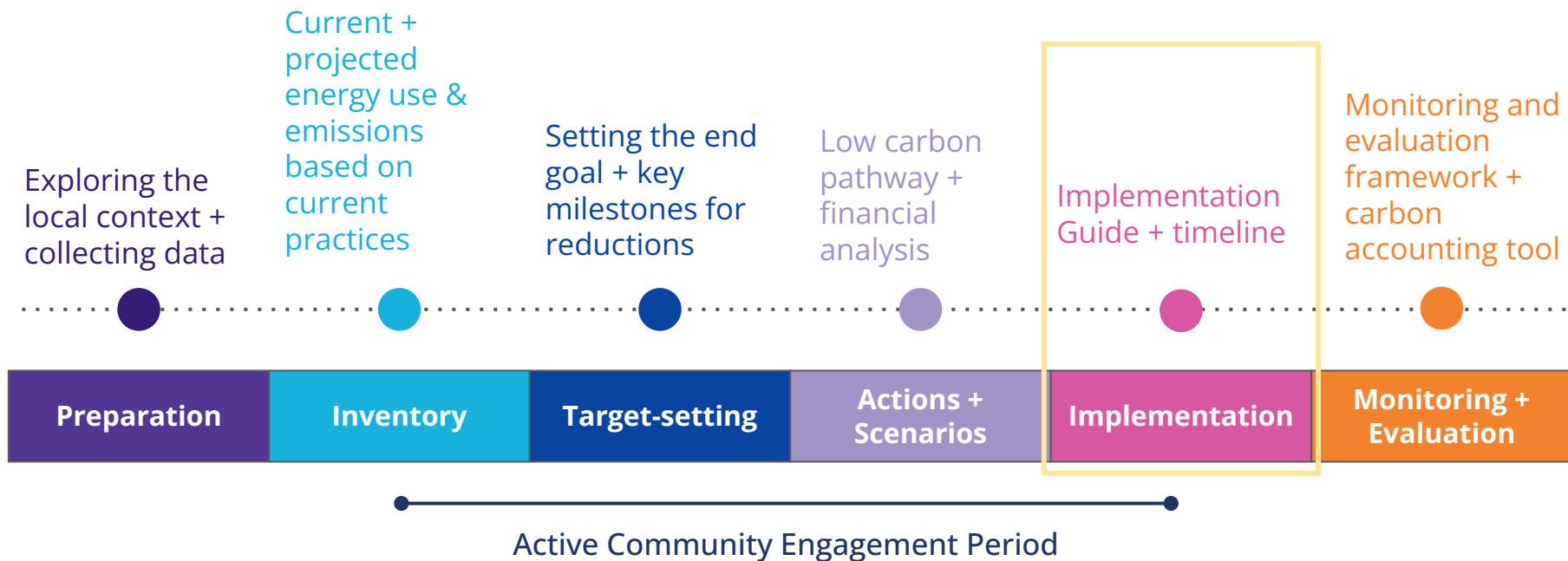
## We'll work together by:

1. Being respectful of each other by listening and honouring others and work together more in a live, interactive format
2. Holding space for discussions and questions
3. Provide clear communication of project progress and between leaders, organizers and community
4. Value everyone's time by ending on time, providing information before our meetings and moving the project forward
5. Balance airtime to hear from as many voices as possible

## **PROJECT NARRATIVE**

Where We Are

# The Process (Project Narrative)



# Localized Implementation

## What

Physical  
reality/changes  
required to meet the  
target

What can be modeled



## How

Education, programs,  
policies, initiatives and  
investments

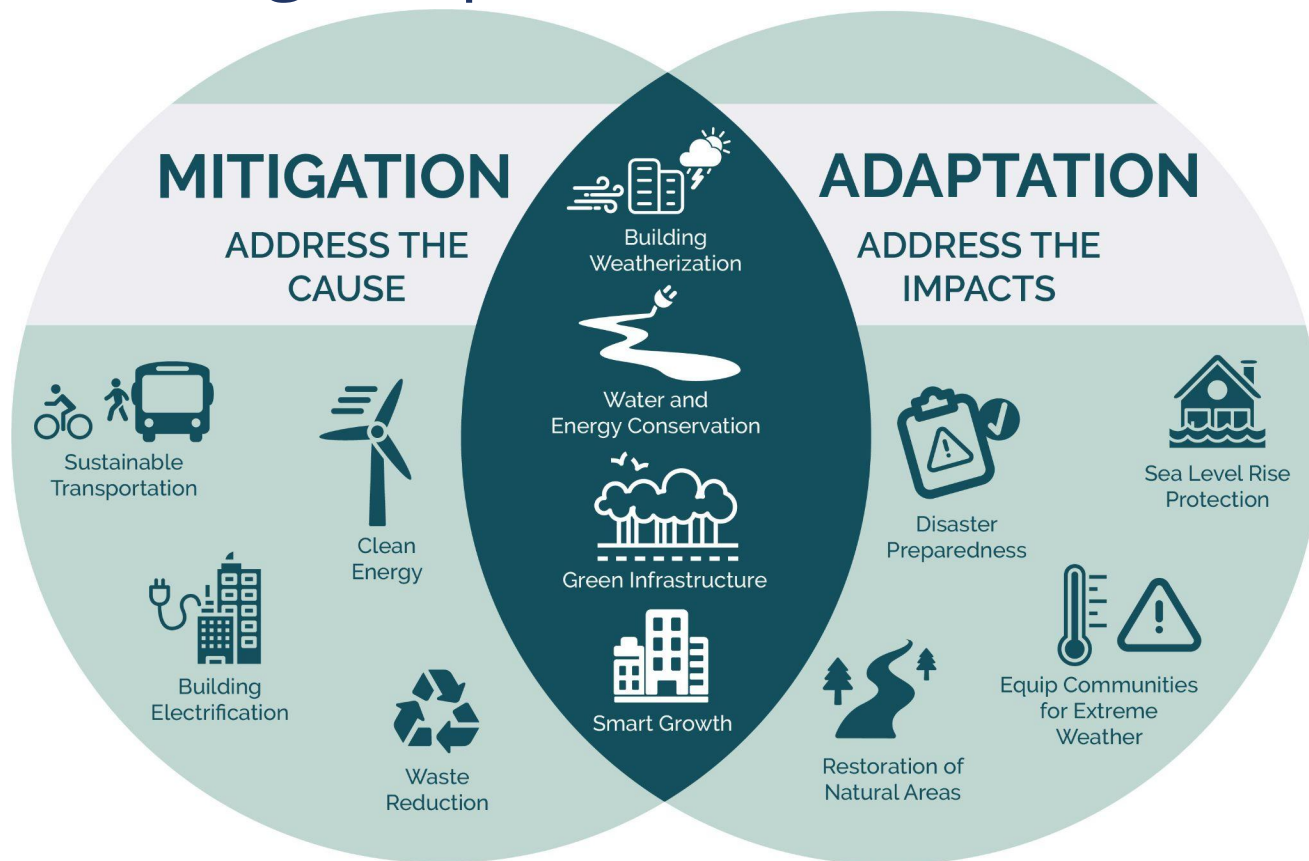
How to achieve the  
physical reality that  
was modelled

What questions do you  
have from the pre-read?

**CAP Pillar**

Adaptation and Resilience

# Understanding Adaptation and Resilience

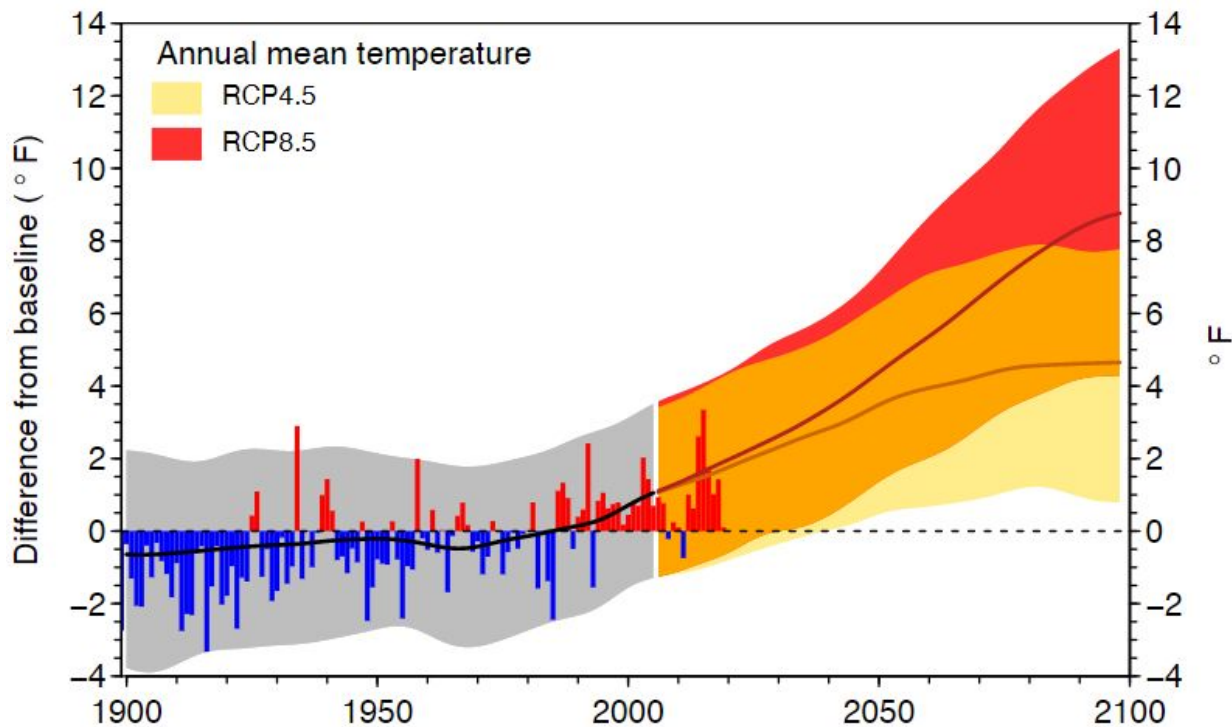


# Climate Hazards in Clackamas County

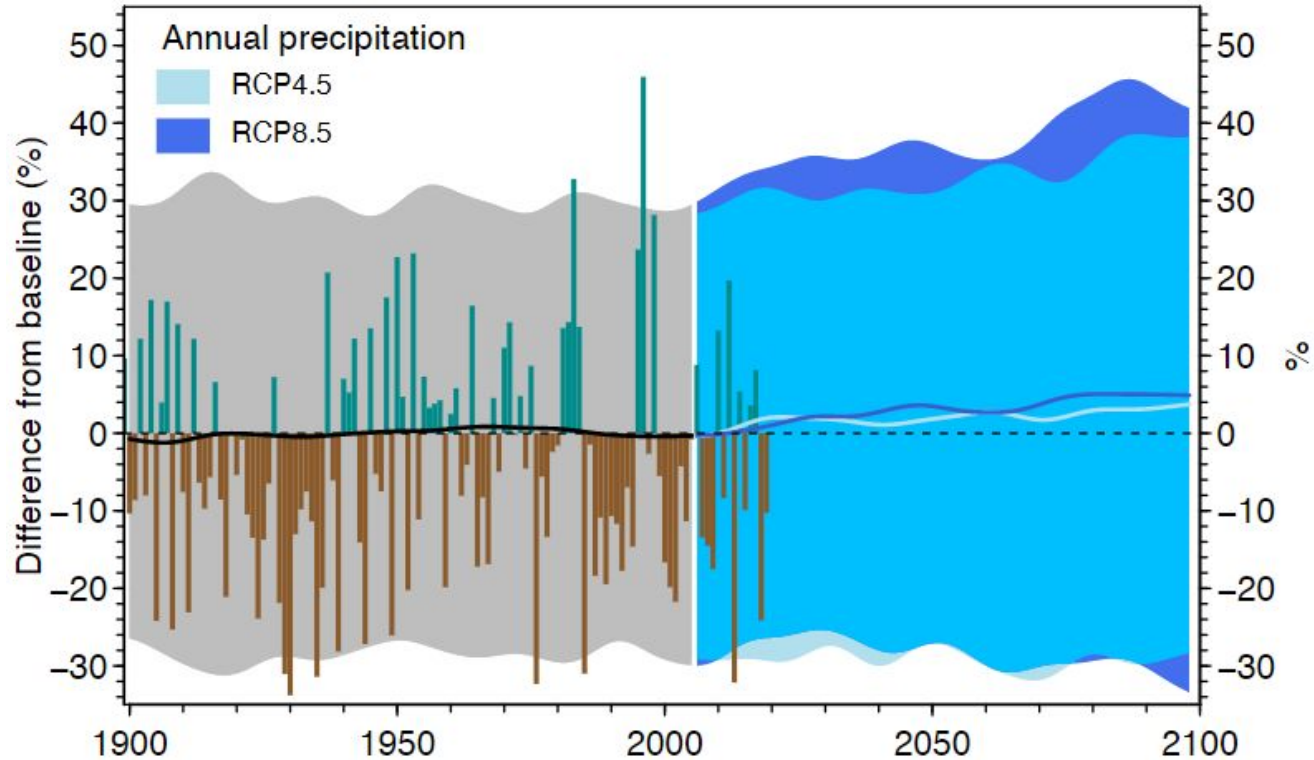
- Temperature pattern changes
- Precipitation pattern changes
- Snowpack and runoff pattern changes
- Extreme heat
- Drought
- Wildfire
- Floods



# Temperature Increase



# Precipitation Changes

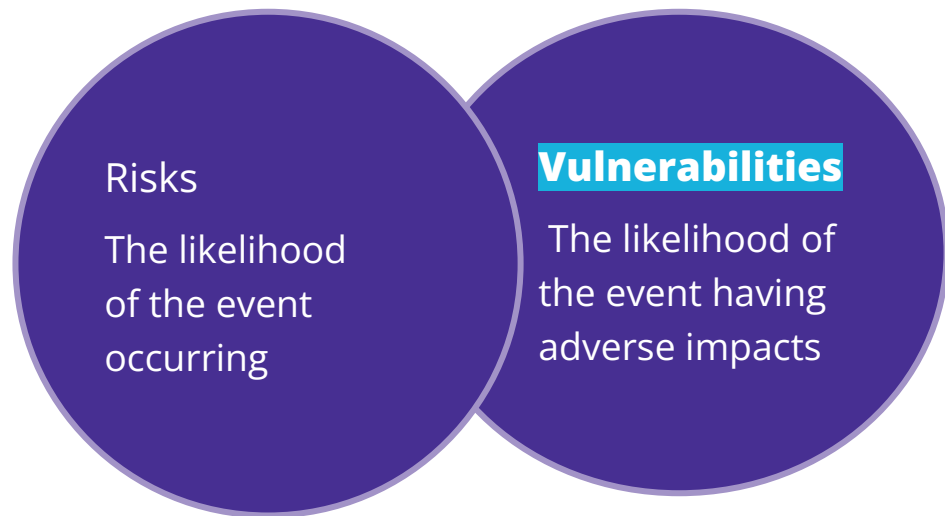


# Pulse Check

What climate hazards concern you the most?

# Climate Risk & Vulnerability

Each climate hazard has a related set of:



Vulnerability is determined by **exposure** (the presence of people, buildings, farmland, livelihoods, ecosystems) and **stressors** (e.g. poverty).

# Pulse Check

What has your experience with climate events been in Clackamas County?

What questions do you have  
for us about resilience and  
adaptation?

## **DISCUSSION**

# Roundtable Discussions

# Breakout Room Questions

Same questions for each hazard in rounds: heat/temperature changes, precipitation changes, extreme weather events (drought, wildfires, flooding, etc.)

- What **vulnerabilities** (e.g. poverty, lack of community warming/cooling stations) do you see in Clackamas County that will contribute to undesirable impacts for people during climate hazard events (e.g. heat dome)?
- How can the County best support the community to help reduce the vulnerabilities you identified?
- How can you/your sector provide support in adapting to climate change and reducing vulnerability to climate events?

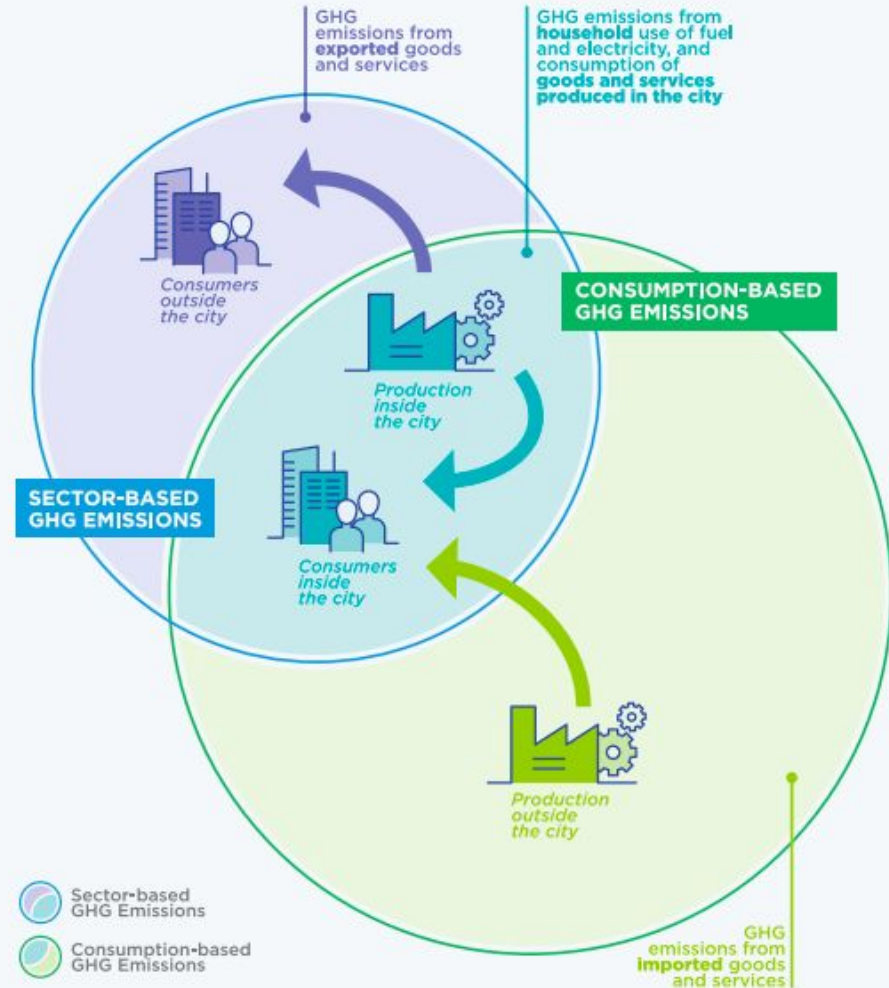


**CAP Pillar**

Consumption-based Emissions

**SSG**

# Understanding consumption-based emissions



# Consumption-based emissions sources in Clackamas County

- Vehicles and vehicle parts
- Food and beverages
- Appliances
- Services

Consumption-based emissions (2016)	
Goods	2,961,103 MTCO <sub>2</sub> e
Services	1,207,818 MTCO <sub>2</sub> e
Air Travel	410,554 MTCO <sub>2</sub> e
<b>Total</b>	<b>7,817,974 MTCO<sub>2</sub>e</b>

What questions do you have for us  
about consumption-based  
emissions?

## **DISCUSSION**

Breakout Rooms

# Breakout Room Questions

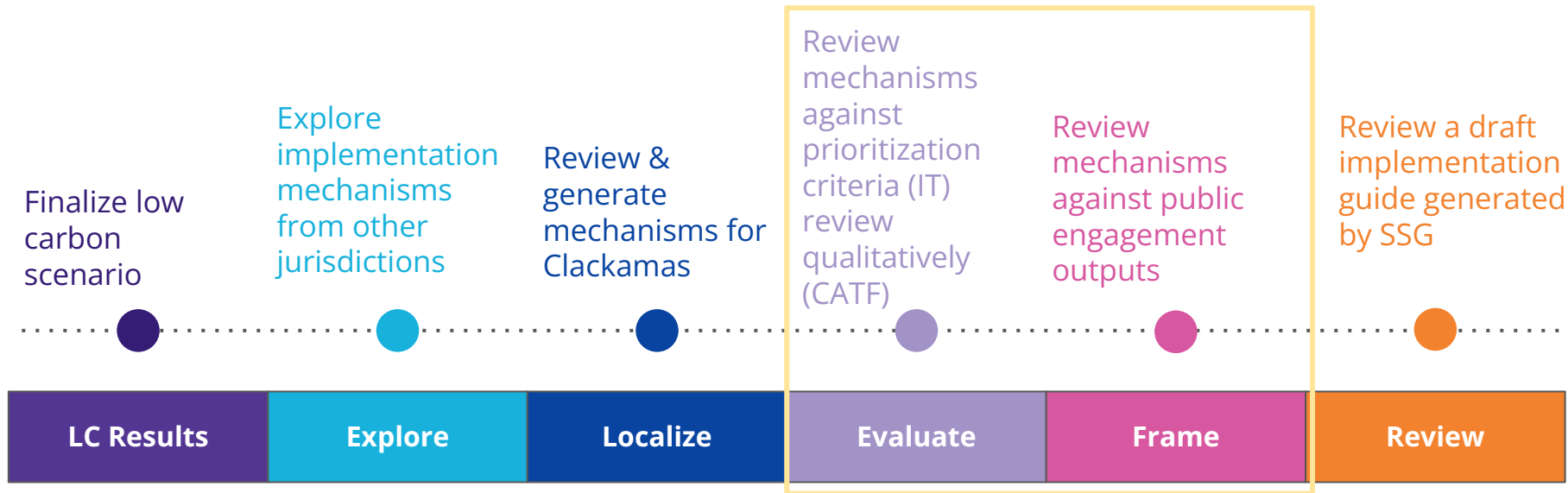
Single round.

- Thinking about the major sources of consumption-based emissions, what ideas do you have for reducing these emissions?
- How can the County support reductions in consumption-based emissions?
- How can you/your sector provide support reductions in consumption-based emissions?

**Next Steps**

Implementation Guide

# Developing the Implementation Guide





## Next Steps

**October 3:** We will require your input back on the previous exercise (sector-based emissions implementation mechanisms)

**October 3:** We will provide draft mechanisms for consumption based emissions and resilience (feedback required by **October 19th**)

# Late October/Early November

**Expect an update on:**

- The climate lens
- Low carbon scenario financials
- The implementation guide
- The draft CAP

# Evaluations

**Let's us know how we did:**

<https://form.typeform.com/to/abhUg4dz>