

## **Board of County Commissioners Business Meeting Minutes – APPROVED 03/30/2023**

A complete video copy and packet including staff reports of this meeting can be viewed at <https://www.clackamas.us/meetings/bcc/business>.

**Thursday, March 23, 2023 – 10:00 AM**

In person and via virtual technology (Zoom)

**PRESENT:**   **Chair Tootie Smith**  
                  **Commissioner Mark Shull**  
                  **Commissioner Martha Schrader**  
                  **Commissioner Ben West**  
                  **Commissioner Ann Leenstra (I only)**

### **CALL TO ORDER**

Chair Smith recessed the Board of County Commissioners and convened the Housing Authority of Clackamas County Board of Commissioners.

#### **I. HOUSING AUTHORITY CONSENT AGENDA**

- A. Approval of Resolution 1975 Acknowledging the Financial Statement Findings and Plan of Corrective Action in accordance with ORS 297.466 for the Fiscal Year 2022 Audit. No fiscal impact. No County General Funds are involved.

Clerk Mayernik read the consent agenda.

Chair Smith called for requests to remove items from the consent agenda. None were received.

Commissioner Leenstra: “I move for approval of the Housing Authority Consent Agenda.” Commissioner Schrader seconded the motion.

Chair Smith called for further discussion. None was heard.

Clerk Mayernik called the poll  
Commissioner Leenstra Aye  
Commissioner Shull Aye  
Commissioner West Aye  
Commissioner Schrader Aye  
Chair Smith Aye; motion passes 5-0.

Chair Smith adjourned the Housing Authority Board and reconvened the Board of County Commissioners.

#### **II. PUBLIC HEARING**

- A. Petition for Withdrawal of Territory from the Canby Area Parks and Recreation District. No fiscal impact. No County General Funds are involved.

Assistant County Counsel Jeffrey Munns briefed the Board on the petition.

Chair Smith called for any clarifying questions or comments from commissioners. None were received.

Chair Smith opened the public hearing.

Don Morgan (Canby) – Representing Canby Area Parks & Recreation District; in support of the petition

Commissioner Schrader made general comments about the history of the district.

Chair Smith closed the public hearing and called for any further discussion. None was heard.

Commissioner Shull: "I move that we adopt the Board Order approving the Preliminary Order of Withdrawal of Territory from the Canby Area Parks and Recreation District." Commissioner Schrader seconded the motion.

Chair Smith called for further discussion. None was heard.

Clerk Mayernik called the poll  
Commissioner West Aye  
Commissioner Shull Aye  
Commissioner Schrader Aye  
Chair Smith Aye; motion passes 4-0.

Chair Smith read a letter of apology to Terry Emmert into the record.

### **III. CONSENT AGENDA**

#### **A. Elected Officials**

1. Approval of Previous Business Meeting Minutes – *BCC*
2. Approval of Amendment #1 extending duration and increasing funding to a Contract with Mark43 Inc. for records and property management software. Amendment value is \$208,999.40 for 1 year, agreement value is increased to \$1,218,989.04 for 6.2 years. Funding is through budgeted County General Funds. – *CCSO*

#### **B. Health, Housing & Human Services**

1. Approval of a Revenue Agreement with CareOregon, Inc. for the 2023 Dental Payment Incentive Program. Agreement value is \$300,000 for 1 year. Funding is through CareOregon, Inc. No County General Funds are involved.
2. Approval of a Personal Services Contract with The Mental Health Association of Oregon for Adult Peer Delivered Services – Mobile Crisis Response Team. Contract value is \$624,234.98 for 22 months. Funding is through Oregon Health Authority. No County General Funds are involved.
3. Approval of a Local Subrecipient Grant Agreement with Living Islands Non-Profit for education and outreach to the Pacific Islanders community for the Commercial Tobacco Prevention Community Grant. Grant value is \$20,000 for 6 months. Funding is through the Oregon Health Authority. No County General Funds are involved.
4. Approval of Amendment #7 increasing funding of an Intergovernmental Agreement with the Oregon Health Authority to finance Community Mental Health, Addiction Treatment, Recovery & Prevention, and Problem Gambling Services. Amendment value is \$299,790.71 for 6 months. Agreement value is increased to \$15,398,689.98 for 1.5 years. Funding is through Oregon Health Authority. No County General Funds are involved.

Clerk Mayernik read the consent agenda.

Chair Smith called for requests to remove items from the consent agenda. None were received.

Commissioner West: "Your honor, I move to approve the consent agenda as read." Commissioner Schrader seconded the motion.

Chair Smith called for further discussion. None was heard.

Clerk Mayernik called the poll  
Commissioner Schrader Aye  
Commissioner Shull Aye  
Commissioner West Aye  
Chair Smith Aye; motion passes 4-0.

Chair Smith recessed the Board of County Commissioners and convened the Clackamas County Development Agency Board of Directors.

#### **IV. DEVELOPMENT AGENCY CONSENT AGENDA**

- A. Approval of Amendment #1 to an Intergovernmental Agreement with Clackamas River Water relating to the Linwood Avenue Improvement project. Amendment is a decrease of \$32,950, total agreement value is reduced to \$130,830. Funding through Clackamas River Water. No County General Funds are involved.
- B. Approval of an Intergovernmental Agreement with the City of Milwaukie relating to the Linwood Avenue Improvement project. Agreement value is \$69,540. Funding is through the City of Milwaukie. No County General Funds are involved.
- C. Approval of a Public Improvement Contract with Moore Excavation, Inc., for the Linwood Avenue Improvements project. Total contract value is \$6,820,302.50. Funding is through the North Clackamas Revitalization Area. No County General Funds are involved.

Clerk Mayernik read the consent agenda.

Chair Smith called for requests to remove items from the consent agenda. None were received.

Director West: "Your honor, I move to approve the consent agenda as read." Director Schrader seconded the motion.

Chair Smith called for further discussion. None was heard.

Clerk Mayernik called the poll

Director West Aye

Director Shull Aye

Director Schrader Aye

Chair Smith Aye; motion passes 4-0.

Chair Smith adjourned the Development Agency Board and convened the North Clackamas Parks and Recreation District Board of Directors.

#### **I. NORTH CLACKAMAS PARKS AND RECREATION DISTRICT CONSENT AGENDA**

- A. Approval of a Board Order authorizing the North Clackamas Parks and Recreation District to apply for a Local Government Grant from the Oregon Parks and Recreation Department for the play area at the community park at the Concord Property. Grant value is \$500,000 with a \$500,000 match. Funding through State grant with match funded by NCPRD Capital Asset Fund. No County General Funds are involved.

Clerk Mayernik read the consent agenda.

Chair Smith called for requests to remove items from the consent agenda. None were received.

Director Shull: "I move for approval of the North Clackamas Parks & Recreation District Consent Agenda." Director Schrader seconded the motion.

Chair Smith called for further discussion. None was heard.

Clerk Mayernik called the poll

Director Schrader Aye

Director West Aye

Director Shull Aye

Chair Smith Aye; motion passes 4-0.

Chair Smith adjourned the North Clackamas Parks and Recreation District Board of Directors and reconvened the Board of County Commissioners.

#### **II. PUBLIC COMMUNICATION**

Chair Smith opened the meeting for public communication.

Paul Edgar (Oregon City) – Homelessness, tolling

Chair Smith made general comments on homelessness and tolling.

Joshua Kingsley (Milwaukie) – In support of Project Turnkey

Rhonda Frick-Wright (Milwaukie) – In support of Project Turnkey

Cris Waller (Milwaukie) – In support of Project Turnkey

Jennie Madrigal (West Linn) – In support of Project Turnkey

Cassie Wilson (Boring) – In support of Project Turnkey

Chair Smith made comments in response to questions about her decision to change her vote on Project Turnkey.

Jane Civiletti (Oak Grove) – In support of Project Turnkey

Kathy Maack (Oak Grove) – In support of Project Turnkey

Mary Stenberg (Damascus) – In support of Project Turnkey

Lorreina Guyott (Damascus) – In support of Project Turnkey

Cindy Fletcher (Portland) – In support of Project Turnkey

Kathleen Jesky (Lake Oswego) – In support of Project Turnkey

Les Poole (Clackamas) – Homelessness, Project Turnkey

Dale Harris (Milwaukie) – In support of Project Turnkey

Fumi Tosu (Milwaukie) – In support of Project Turnkey

John Barnes (Milwaukie) – Homelessness

Anna Hoesly (Oak Grove) – In support of Project Turnkey

Gene Zahari (Milwaukie) – On Chair Smith's decision to change her vote on Project Turnkey

Stori Long (Oak Grove) – In support of Project Turnkey

Elaine Campbell (Tualatin) – Homelessness

Scott Nichols (Wilsonville) – In support of Project Turnkey

Susan Rodway (Oregon City) – In support of Project Turnkey

Adam Ericksen (Milwaukie) – Homelessness

Jana Hak (Clackamas) – Project Turnkey

Janie Gullickson (Beavercreek) – Project Turnkey

Rick Dodge (Clackamas) – Sanctuary County, Homelessness

Cole Merkel (Oak Grove) – In support of Project Turnkey

Alyssa Walker Keller (Milwaukie) – Project Turnkey

Bill Wehr (Damascus) – Public policy and commissioner responses to inquiries

K Longwell (Clackamas) – Project Turnkey

Kathy Anderson (Portland) – On Chair Smith's decision to change her vote on Project Turnkey

Michele Veenker (Gresham) – Project Turnkey

Kelly Lenox (Clackamas) – Project Turnkey

Chair Smith made general comments about her decision to change her vote and the County's proposal for moving forward.

Chair Smith closed the meeting for public communication.

### **III. COUNTY ADMINISTRATOR UPDATE**

Skipped in the interest of time.

### **IV. COMMISSIONER COMMUNICATION**

Commissioner Shull made comments about community engagement, various bills before the Oregon legislature, including SB 655, SB 704, SB 874, and SB 2000, Trimet and fentanyl exposure issues, tolling, Project Turnkey, illegal drugs and Measure 110, and housing.

Commissioner West made comments about community engagement, illegal drugs, homelessness, harm reduction, and the County's plan to move forward on the issues of homelessness and drug addiction.

Commissioner Schrader made comments about her commitment to work with the Board in spite of disagreement, Project Turnkey, mental health and drug addiction treatment, and the Association of Oregon Counties.

Chair Smith adjourned the meeting at 12:13 PM.

## Canby Area Parks and Recreation (CAPRD)

### Petition submission supporting documents

- 1) Petition to Clackamas County Board of Commissioners
- 2) CAPRD motion to approve boundary adjustment
- 3) Excerpt from City of Canby's Parks and Recreation Master Plan (adopted August, 2022)
- 4) Letters of support – City of Canby, City of Canby Parks Advisory Board, Canby Chamber of Commerce, Canby Kids Inc. (local sports organization)
- 5) Oregon Department of Revenue's boundary change preliminary review and approval
- 6) Series of 12 maps showing current and proposed boundary in overall and detailed views
- 7) Written description of proposed boundary and approval by certified land surveyor



January 31, 2023

To: Clackamas County Board of Commissioners  
2015 Kaen Road  
Oregon City, Oregon 97045

**In the matter of withdrawal of tax parcels from Special District,  
Canby Area Parks and Recreation District (CAPRD)**

**The Canby Area Parks and Recreation District's Board of Directors are requesting the Clackamas County Board of Commissioners, acting as the governing body, to withdraw described areas from the present boundary of the district.**

The Canby Area Parks and Recreation District was formed in August 7, 1964 as South Clackamas County Recreation District by Clackamas County Board Order #11832. It is organized and exists under the provisions of ORS Chapter 266 - Park and Recreation Districts.

On June 27, 2022, the Canby Area Parks and Recreation District (CAPRD) Board unanimously voted to withdraw tax parcels from the Canby Area Parks and Recreation District (CAPRD) boundary as shown by their resolution (Exhibit A).

The new CAPRD boundary shall be represented by the ten (10) Clackamas County Tax Assessor maps, maps of the current and proposed Park District Boundary attached as (Exhibit B), and a written description attached as Exhibit C. All maps and the written description have received preliminary approval of the Clackamas County Assessors Office and the Oregon Department of Revenue.

Sincerely,  
Canby Area Parks and Recreation District (CAPRD) Board

Shantel Harney, Position 1

Andrew Hale, Position 2

Dick Dowdy, Position 3

Ryan Nelson, Position 4

Donald Morgan, Position 5

EXHIBIT A

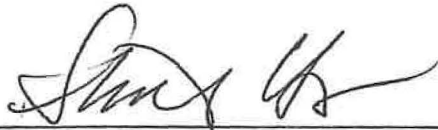
Canby Area Parks and Recreation District

(CAPRD)

Motion to Withdraw Tax Parcels from the Special District

The Canby Area Parks and Recreation District (CAPRD) board hereby moves to withdraw tax parcels from the Special District such that the boundary shall be adjusted to match the ten (10) Clackamas County Tax Assessor Maps and the Map of the current and proposed Park District as preliminarily approved by the Oregon Department of Revenue. (Exhibit B)


A map of the proposed boundaries preliminarily approved by the Oregon Department of Revenue is attached as Exhibit C.



Shantel Harney, Position 1



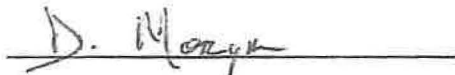
Andrew Hale, Position 2



Dick Dowdy, Position 3



Ryan Nelson, Position 4



Don Morgan, Position 5



These meetings were by invitation, and intended to solicit broad-based perspectives. Each meeting was approximately 60 to 90 minutes long and a series of questions were facilitated by BerryDunn to help ensure that adequate input was received from all attendees. The participants included leaders of nonprofit groups, sport providers, civic groups, education representatives, teens, and seniors.

- City staff (06)

City staff provided invaluable input for the master plan. During the process, individual members of city departments worked closely with the consultants to develop service assessments included in the plan.

- Public Forum (30)

City of Canby community members attending the public forum.

## D. Key Issues Summary

The collective master planning process identified the following top five desires and needs related to parks and recreation:

### Needs

1. Encourage and support the Canby Area Parks and Recreation District (CAPRD – an independent Oregon Special District that is not part of the city) to establish a formal tax rate which may require altering the district’s boundaries, requiring a vote of district community members
2. Establish a formal parks and recreation department, by developing a recreation program and hiring a professional parks and recreation administrator
3. Enhance communication that will occur if a new department is formed
4. Complete a Department of Justice-required Americans with Disabilities Act (ADA) transition plan
5. Establish a greater focus on diversity, equity, and inclusion (DEI)

### Desires

1. Complete a master plan for Wait Park with subsequent renovation
2. Complete a master plan for Community Park with subsequent renovation
3. Enhance and expand to provide an improved and connected trail system
4. Provide enhanced recreation access to the Willamette River
5. Provide enhancements to services offered such as a dog park, update to the swimming center, an inclusive play area, and park maintenance

To develop the goals, objectives, and actions for the master plan, key issues identified from qualitative input (staff, community, and leadership input) and quantitative input (survey, planning documents, and an evaluation of parks and facilities’ LOS) were synthesized and prioritized. A visioning workshop with city and department leadership was held to assist in clarifying and prioritizing the issues below.

The consultants, staff, leadership, and community members considered the input and findings, resulting in identification of key issues that were presented in a series of meetings with staff, key stakeholders, and the public. The key issues formed the basis for potential recommendations and are organized by categories. The key issues are rooted in community member input and are in **Appendix A**.



# City of Canby

PO Box 930 Phone: 503.266.4021  
222 NE 2nd Ave Fax: 503.266.7961  
Canby, OR 97013 www.canbyoregon.gov

July 21, 2021

Clackamas County Board of Commissioners  
2051 Kaen Road  
Oregon City, OR 97045

RE: Support for Reduction of Size of District

Dear County Commissioners:

On behalf of the City Council of Canby, we are writing to express our support for Canby Area Parks and Recreation District's (CAPRD) request to reduce the size of the district. This organization feels strongly that the District can be most effective if the District's boundary reflects an area consistent with the users who are likely to access programs and services the District offers. The current boundary is so broadly defined that it captures a large population that is extremely unlikely to access District programs and services.

Thank you for your consideration of this request.

Sincerely,

Mayor Brian Hodson

City of Canby

Scott Archer

City Administrator, City of Canby

Canby Park & Recreation Advisory Board

Date: 07/21/2021

Clackamas County Board of Commissioners  
2051 Kaen Road  
Oregon City, OR 97045

RE: Support for Reduction of Size of District

Dear County Commissioners:

On behalf of Canby Park & Recreation Advisory Board, we are writing to express our support for Canby Area Parks and Recreation District's (CAPRD) request to reduce the size of the district. This organization feels strongly that the District can be most effective if the District's boundary reflects an area consistent with the users who are likely to access programs and services the District offers. The current boundary is so broadly defined that it captures a large population that is extremely unlikely to access District programs and services.

It is hoped that CAPRD can obtain a voter approved tax base to support Park and Recreation activities within this reduced District. By adopting a District boundary that more clearly encompasses probable users of the District's services, the costs associated with the services would more closely align with the service beneficiaries.

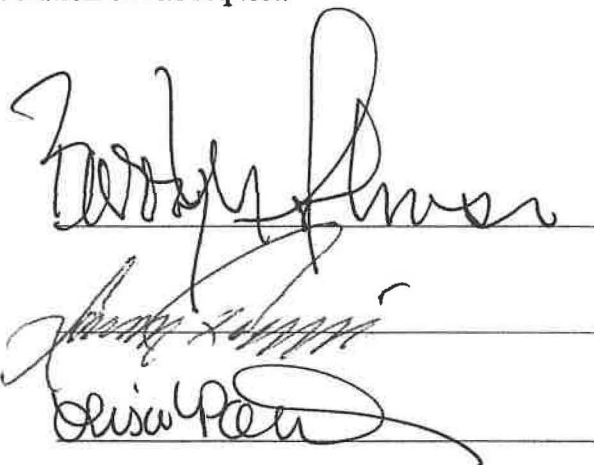
Thank you for your consideration of this request.

Sincerely,

Barry Johnson  
Chair

Jim Davis  
Vice Chair

Lisa Potter  
Secretary



The image shows three handwritten signatures, each written over a horizontal line. The top signature is for Barry Johnson, the middle one is for Jim Davis, and the bottom one is for Lisa Potter. The signatures are in cursive and appear to be in black ink.



Canby Area Chamber of Commerce  
190 SW 2<sup>nd</sup> Avenue  
Canby, OR 97013

11/29/2021

Clackamas County Board of Commissioners  
2051 Kaen Road  
Oregon City, OR 97045

RE: Support for Reduction of Size of District

Dear County Commissioners:

The Canby Area Chamber of Commerce is writing to you today to express our support for Canby Area Parks and Recreation District's (CAPRD) request to reduce the size of the district. We feel strongly that the District can be most effective if the District's boundary reflects an area consistent with the users who are most likely to access programs and services the District offers. The current boundary is so broadly defined that it captures a geography and population that is too large to come to agreement on the services and facilities required to best serve the local population. As such, it is imperative that the District be resized to begin providing recreational services and facilities to the Canby Area.

As a business advocacy organization, these types of recreational programs and facilities drive events and tourism to the area, in addition to providing healthy outlets for local residents. Canby's livability, and our ability to attract workers to the area, is improved by a robust and healthy recreational program. We see the district resizing as a move in the right direction in this regard.

It is hoped that CAPRD can obtain a voter approved tax base to support Park and Recreation activities within this reduced District. By adopting a District boundary that more clearly encompasses probable users of the District's services, the costs associated with the services would more closely align with the service beneficiaries.

Thank you for your consideration of this request.

Sincerely,

A handwritten signature in black ink, appearing to read "Kyle Lang", is written over a faint, larger version of the same signature.

Kyle Lang  
CEO  
Canby Area Chamber of Commerce

# Exhibit I

Canby Kids Inc.

Vicki Pounds

PO Box 631, Canby Oregon 97013

[Canbykids@canby.com](mailto:Canbykids@canby.com)

503-266-5437

July 12, 2021

Clackamas County Board of Commissioners

2051 Kaen Road

Oregon City, Oregon 97012

RE: Support for Reduction of Size of District

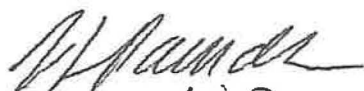
Dear County Commissioners:

On behalf of Canby Kids Inc., we are writing to express our support for Canby Area Parks and Recreation District's (CAPRD) request to reduce the size of the district. This organization feels strongly that the District can be most effective if the District's boundary reflects an area consistent with the users who are likely to access programs and services the District offers. The current boundary is so broadly defined that it captures a large population that is extremely unlikely to access the District programs and services.

It is hoped that CAPRD can obtain a voter approved tax base to support Park and Recreation activities within this reduced District. By adopting a District boundary that more clearly encompassed probable users of District's services, the costs associated with the services would more closely align with the service beneficiaries.

Thank you for your consideration of this request.

Sincerely,

  
Vicki Pounds Secretary/Treasurer

  
Shantel Herney President

**Boundary Change Preliminary Review****DOR 3-P669-2022**

Cadastral Information Systems Unit  
PO Box 14380  
Salem, OR 97309-5075  
fax 503-945-8737  
[boundary.changes@dor.oregon.gov](mailto:boundary.changes@dor.oregon.gov)

Canby Area Parks and Rec. District  
P.O.Box 943  
Canby OR 97013

---

March 29, 2022

Documents received: 2/15/2022, 3/25/2022, 3/28/2022, 3/28/2022  
From: Don Morgan

This letter is to inform you that the Description and Map for your planned Withdrawal from Canby Area Parks and Recreation District (CAPRD) (10 Assr Maps + Map of Park District) in Clackamas County have been reviewed per your request. They MEET the requirements of ORS 308.225 for use with an Order, Ordinance, or Resolution which must be submitted to the Clackamas County Assessor and the Department of Revenue in final approved form before March 31 of the year in which the change will become effective.

--Please use the versions of the assessor's maps that have the Canby Area Parks and Recreation District. labels. These will make it clear which side of the red boundary line is in the Canby Area Parks and Recreation District. Use these maps to show in detail the area that will remain in the park district.

--Use the map provided by the county which has been updated to show the area to be Withdrawn from Canby Area Parks and Recreation District. The area shaded in green on the map is the portion of the park district to be withdrawn.

--Use the Revised boundary description with the 3-25-2022 date.

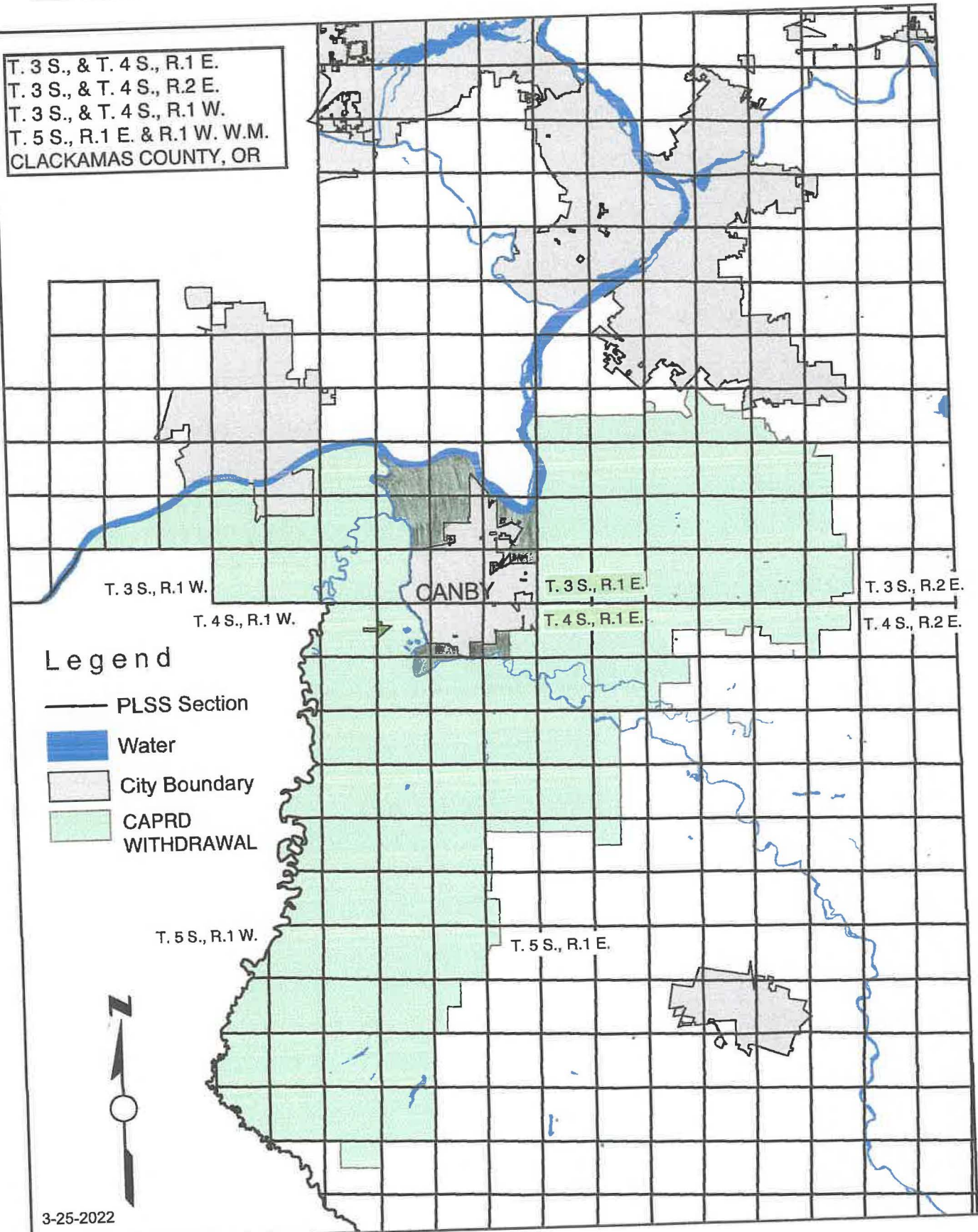
Both the assessor maps and the revised park district map along with the revised legal description should be submitted to the jurisdictions processing this boundary change including Clackamas Co. County Counsel / Board of County Commissioners, Clackamas Co. Assessment & Taxation, the Oregon Dept. of Revenue and eventually the Secretary of State.

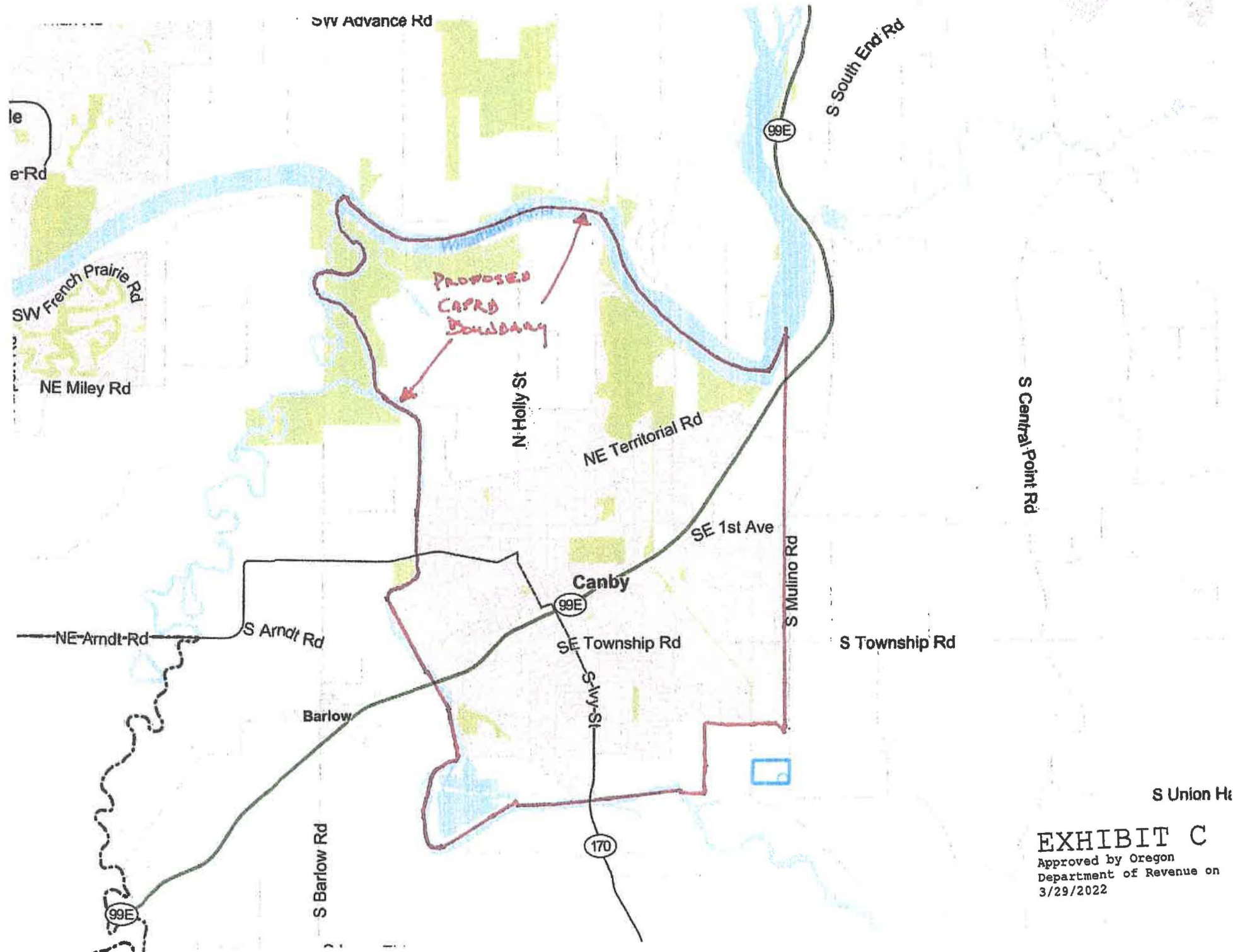
The full set of maps will make it clear what part of the park district is to be withdrawn and what part is to remain in the district.

If you have any questions please contact Elise Bruch, [Elise.A.Bruch@oregon.gov](mailto:Elise.A.Bruch@oregon.gov)

**PORTION to be WITHDRAWN from the CANBY AREA PARKS AND RECREATION DISTRICT**

T. 3 S., & T. 4 S., R.1 E.  
 T. 3 S., & T. 4 S., R.2 E.  
 T. 3 S., & T. 4 S., R.1 W.  
 T. 5 S., R.1 E. & R.1 W. W.M.  
 CLACKAMAS COUNTY, OR





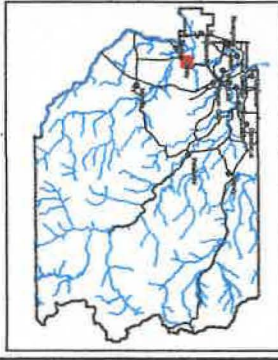
**EXHIBIT C**  
 Approved by Oregon  
 Department of Revenue on  
 3/29/2022



SECTION 27 T.3S. R.1E. W.M.  
CLACKAMAS COUNTY  
1" = 400'

**REVISION DATE:**  
3-25-2022

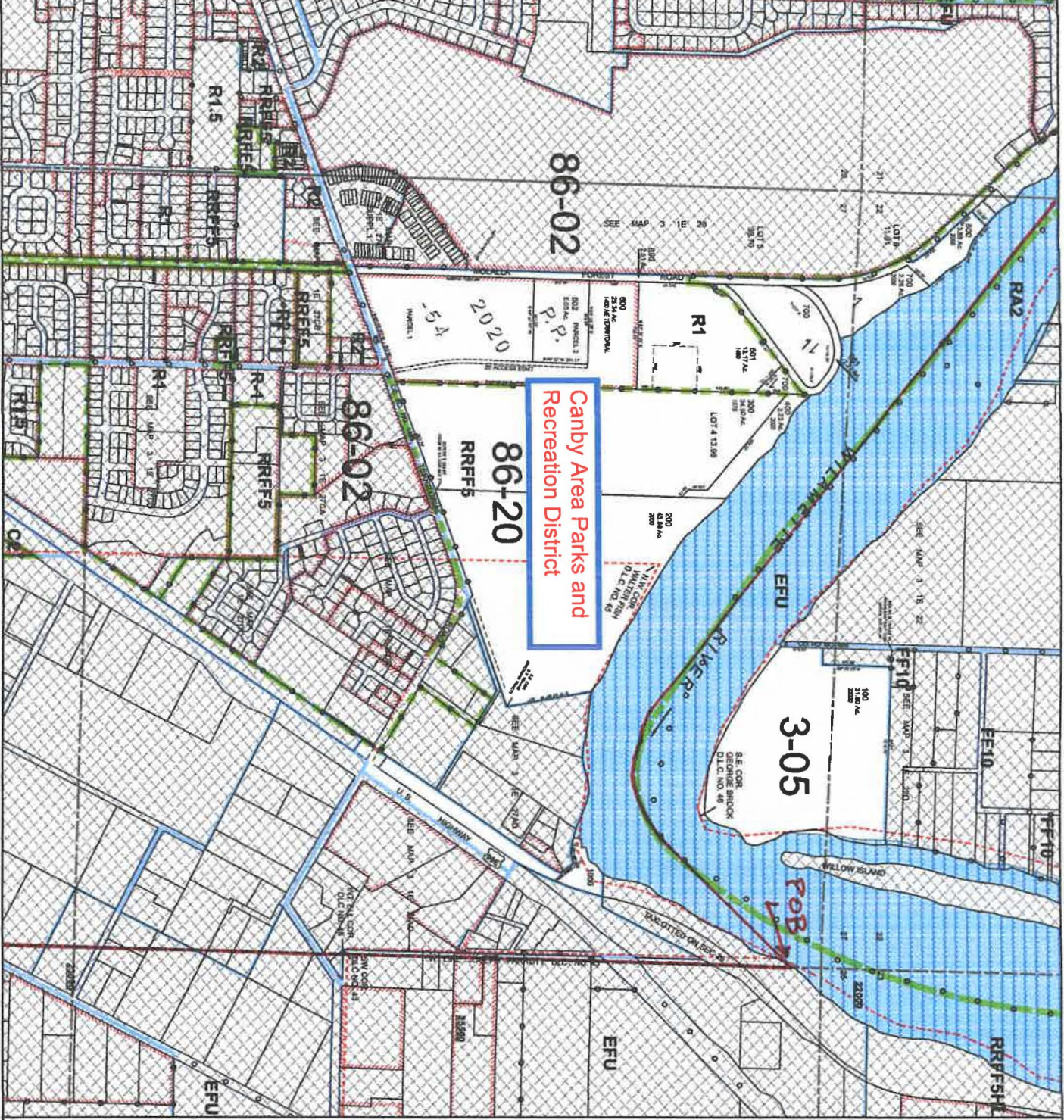
- Parcel Boundary
- Private Road ROW
- Historical Boundary
- Railroad Centerline
- Tax Code Lines
- Map Index
- Land Use Zoning
- Water
- PMS
- Corner
- Section Corner
- 1/4th Line
- Cont. Lot Line
- D/LC Line
- Mainline Line
- PLS Section Line
- Historic Center 47
- Historic Center 20



THIS MAP IS FOR ASSESSMENT PURPOSES ONLY



1600022



**Canby Area Parks and Recreation District**

3 1 E 34  
CANBY

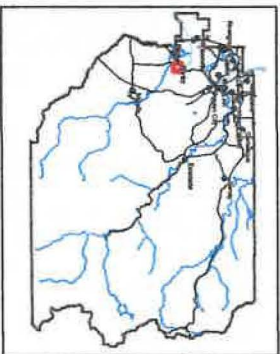
SECTION 34 T.3S. R.1E. W.M.  
CLACKAMAS COUNTY  
1" = 400'

D. L. C.  
PHILANDER LEE NO. 56  
WALTER FISH NO. 45

Cartographic Title/Scale

4000  
4200  
4400  
4600  
4800  
5000  
5200  
5400  
5600  
5800  
6000  
6200  
6400  
6600  
6800  
7000  
7200  
7400  
7600  
7800  
8000  
8200  
8400  
8600  
8800  
9000  
9200  
9400  
9600  
9800  
10000

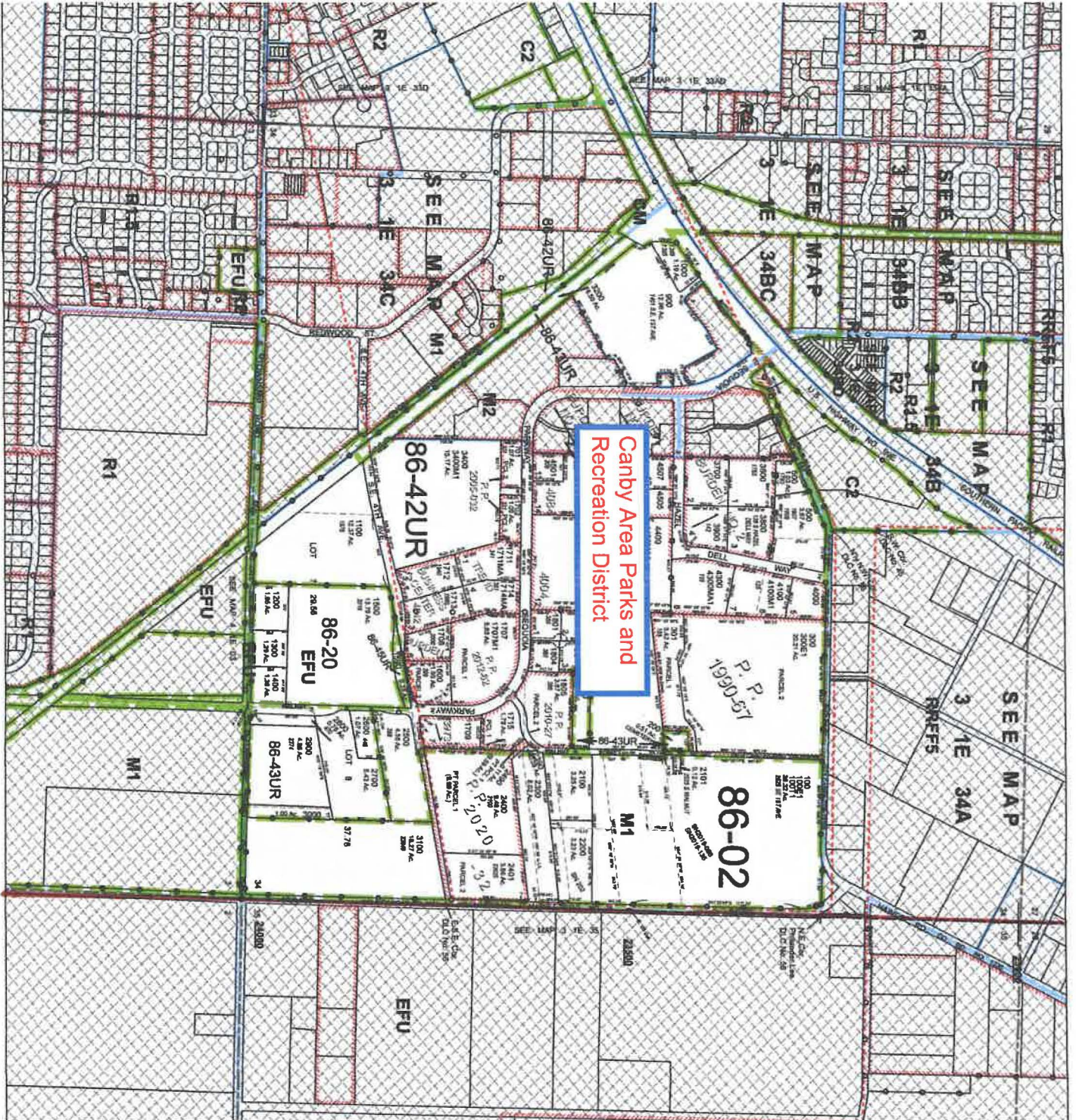
- Parcel Boundary
- Private Road ROW
- Historical Boundary
- Railroad Centerline
- Tie/Cut Lines
- Map Index
- Waterlines
- Land Use Zoning
- Plat
- Water
- Center
- Section Corner
- Right Line
- Over-Lot Line
- DIC Line
- Master Line
- PLSS Section Line
- Historic Center 40'
- Historic Center 20'



THIS MAP IS FOR ASSESSMENT  
PURPOSES ONLY



3 1 E 34  
CANBY



Canby Area Parks and  
Recreation District

86-02

86-42UR

86-20 EFU

86-43UR

P P 1990-57

86-20

R1

M1

EFU

SEE MAP 3 1E 34A

SEE MAP 3 1E 34B

SEE MAP 3 1E 34C

SEE MAP 3 1E 34D

SEE MAP 3 1E 34E

SEE MAP 3 1E 34F

SEE MAP 3 1E 34G

SEE MAP 3 1E 34H

SEE MAP 3 1E 34I

SEE MAP 3 1E 34J

SEE MAP 3 1E 34K

SEE MAP 3 1E 34L

SEE MAP 3 1E 34M

SEE MAP 3 1E 34N

SEE MAP 3 1E 34O

SEE MAP 3 1E 34P

SEE MAP 3 1E 34Q

SEE MAP 3 1E 34R

SEE MAP 3 1E 34S

SEE MAP 3 1E 34T

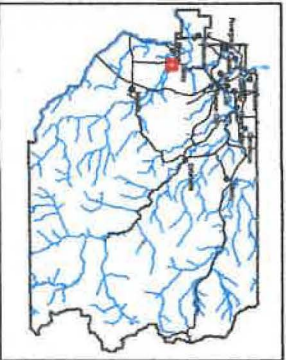
SEE MAP 3 1E 34U

Revised Date:  
3-28-2022

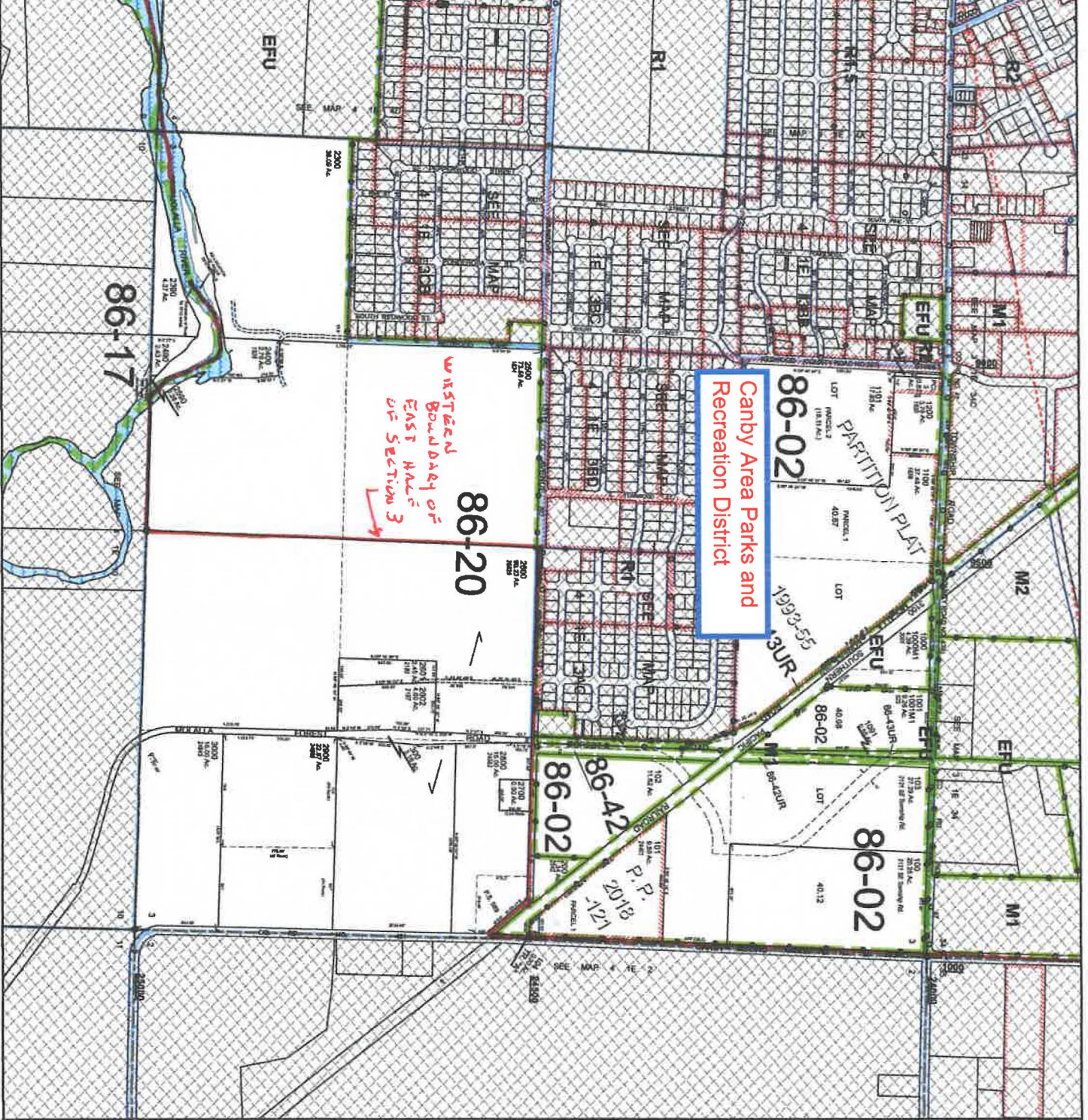
Contour/ Elevation

|     |
|-----|
| 400 |
| 405 |
| 410 |
| 415 |
| 420 |
| 425 |
| 430 |
| 435 |
| 440 |
| 445 |
| 450 |
| 455 |
| 460 |
| 465 |
| 470 |
| 475 |
| 480 |
| 485 |
| 490 |
| 495 |
| 500 |
| 505 |
| 510 |
| 515 |
| 520 |
| 525 |
| 530 |
| 535 |
| 540 |
| 545 |
| 550 |
| 555 |
| 560 |
| 565 |
| 570 |
| 575 |
| 580 |
| 585 |
| 590 |
| 595 |
| 600 |

- Parcel Boundary
- Private Road ROW
- Historical Boundary
- Retained Ownership
- Tax Code Lines
- Map Index
- Water Lines
- Land Use Zoning
- Waters
- Wells
- Corner
- Section Corner
- 1/16th Line
- 1/4th Line
- DLC Line
- Header Line
- PUS Section Line
- Historic Corridor 40'
- Historic Corridor 20'



THIS MAP IS FOR ASSESSMENT  
PURPOSES ONLY



SECTION 9 T4S, R.1E, W.M.  
CLACKAMAS COUNTY

1" = 400'

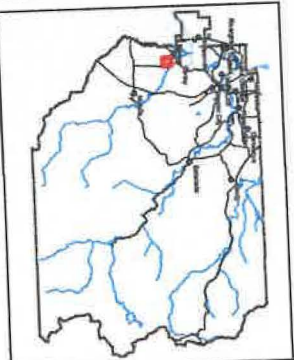
REVISION DATE:  
3-25-2022

Canby Area Parks and  
Recreation District

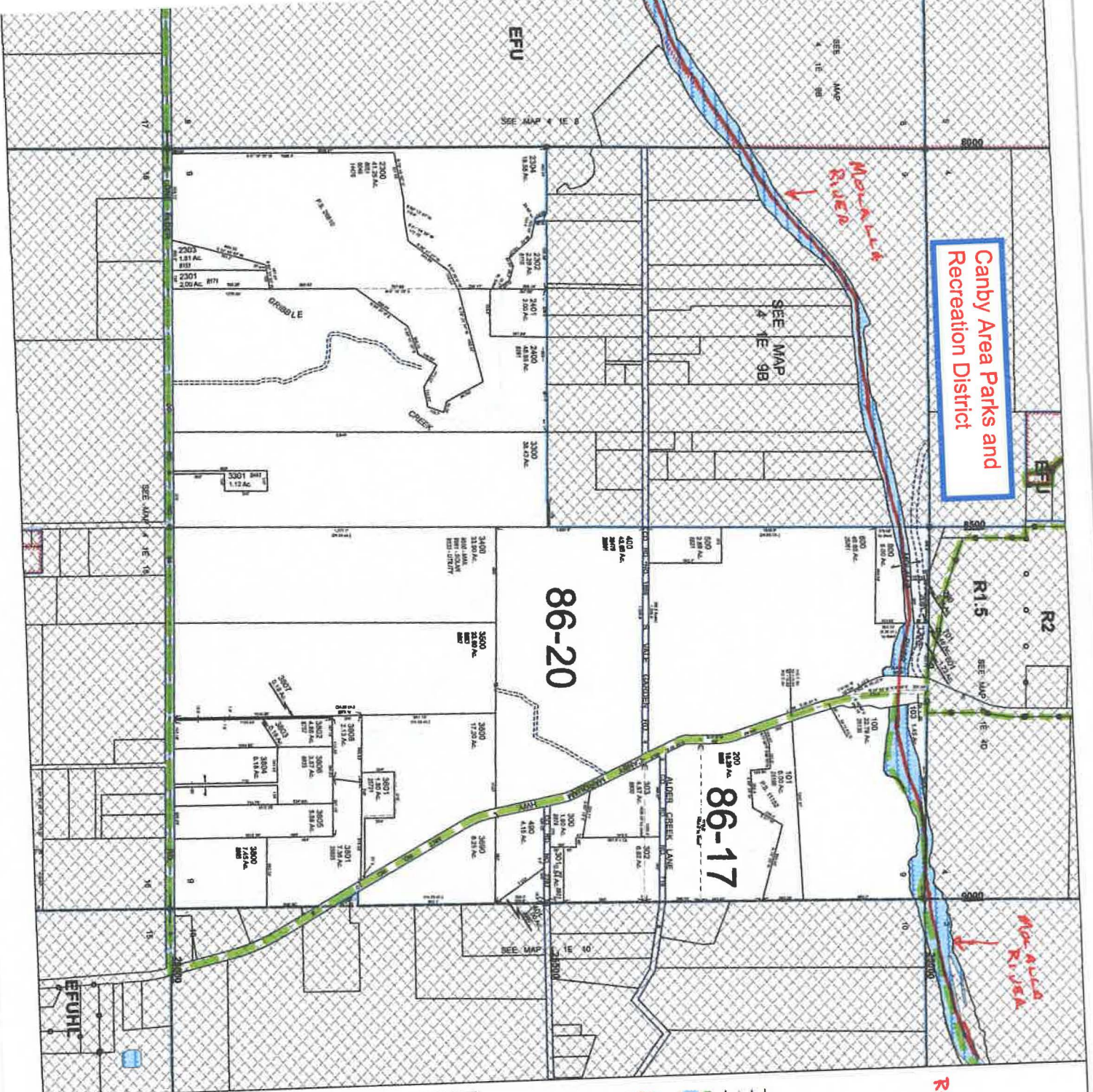
Contour Footcandle

|     |
|-----|
| 402 |
| 400 |
| 398 |
| 396 |
| 394 |
| 392 |
| 390 |
| 388 |
| 386 |
| 384 |
| 382 |
| 380 |
| 378 |
| 376 |
| 374 |
| 372 |
| 370 |
| 368 |
| 366 |
| 364 |
| 362 |
| 360 |
| 358 |
| 356 |
| 354 |
| 352 |
| 350 |
| 348 |
| 346 |
| 344 |
| 342 |
| 340 |
| 338 |
| 336 |
| 334 |
| 332 |
| 330 |
| 328 |
| 326 |
| 324 |
| 322 |
| 320 |
| 318 |
| 316 |
| 314 |
| 312 |
| 310 |
| 308 |
| 306 |
| 304 |
| 302 |
| 300 |
| 298 |
| 296 |
| 294 |
| 292 |
| 290 |
| 288 |
| 286 |
| 284 |
| 282 |
| 280 |
| 278 |
| 276 |
| 274 |
| 272 |
| 270 |
| 268 |
| 266 |
| 264 |
| 262 |
| 260 |
| 258 |
| 256 |
| 254 |
| 252 |
| 250 |
| 248 |
| 246 |
| 244 |
| 242 |
| 240 |
| 238 |
| 236 |
| 234 |
| 232 |
| 230 |
| 228 |
| 226 |
| 224 |
| 222 |
| 220 |
| 218 |
| 216 |
| 214 |
| 212 |
| 210 |
| 208 |
| 206 |
| 204 |
| 202 |
| 200 |
| 198 |
| 196 |
| 194 |
| 192 |
| 190 |
| 188 |
| 186 |
| 184 |
| 182 |
| 180 |
| 178 |
| 176 |
| 174 |
| 172 |
| 170 |
| 168 |
| 166 |
| 164 |
| 162 |
| 160 |
| 158 |
| 156 |
| 154 |
| 152 |
| 150 |
| 148 |
| 146 |
| 144 |
| 142 |
| 140 |
| 138 |
| 136 |
| 134 |
| 132 |
| 130 |
| 128 |
| 126 |
| 124 |
| 122 |
| 120 |
| 118 |
| 116 |
| 114 |
| 112 |
| 110 |
| 108 |
| 106 |
| 104 |
| 102 |
| 100 |
| 98  |
| 96  |
| 94  |
| 92  |
| 90  |
| 88  |
| 86  |
| 84  |
| 82  |
| 80  |
| 78  |
| 76  |
| 74  |
| 72  |
| 70  |
| 68  |
| 66  |
| 64  |
| 62  |
| 60  |
| 58  |
| 56  |
| 54  |
| 52  |
| 50  |
| 48  |
| 46  |
| 44  |
| 42  |
| 40  |
| 38  |
| 36  |
| 34  |
| 32  |
| 30  |
| 28  |
| 26  |
| 24  |
| 22  |
| 20  |
| 18  |
| 16  |
| 14  |
| 12  |
| 10  |
| 8   |
| 6   |
| 4   |
| 2   |
| 0   |

- Parcel Boundary
- Private Road ROW
- Historical Boundary
- Railroad Corridor
- TaxCadastral
- Map Index
- Waterlines
- Land Use Zoning
- Water
- Pools
- Corner
- Section Center
- 1/16th Line
- Govt Lot Line
- D/C Line
- Master Line
- PLSS Section Line
- Historic Center 40'
- Historic Center 20'



THIS MAP IS FOR ASSESSMENT  
PURPOSES ONLY



SECTION 8 T.4S. R.1E. W.M.  
CLACKAMAS COUNTY  
1" = 400'

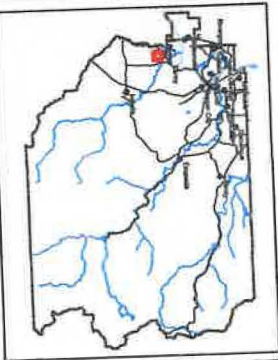
D.L.C.  
SAMUEL K. BARLOW NO. 50

Consulted Tracks  
200

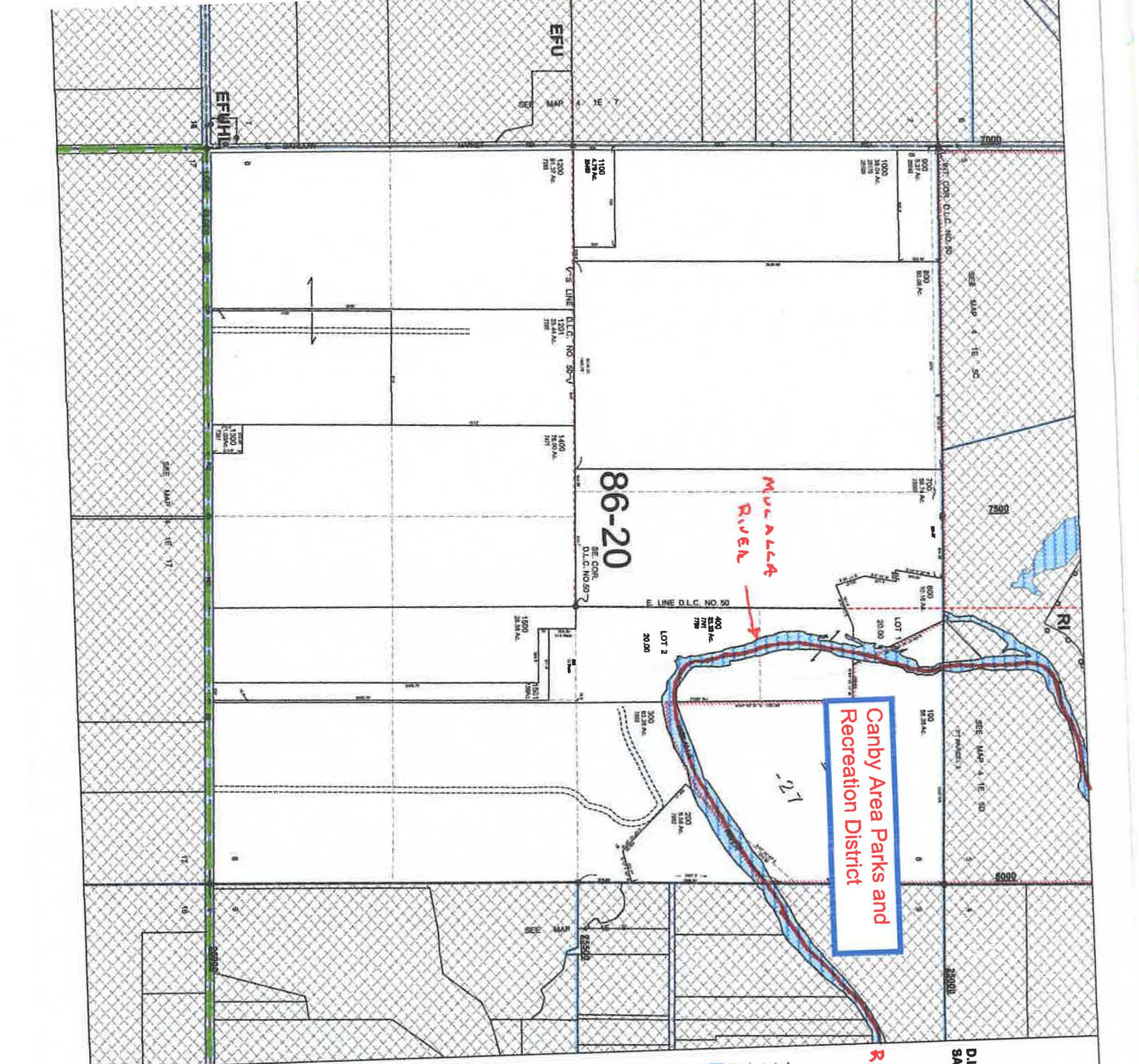
Canby Area Parks and  
Recreation District

Revised Date  
3-25-2022

- Parcel Boundary
- Private Road ROW
- Historical Boundary
- Railroad Centerline
- Thematic Lines
- Map Index
- Water Lines
- Land Use Zoning
- Plat
- Water
- Corner
- Section Corner
- 1/16th Line
- Govt Lot Line
- D.L.C. Line
- Header Line
- PLSB Section Line
- Historic Corridor 42
- Historic Corridor 20



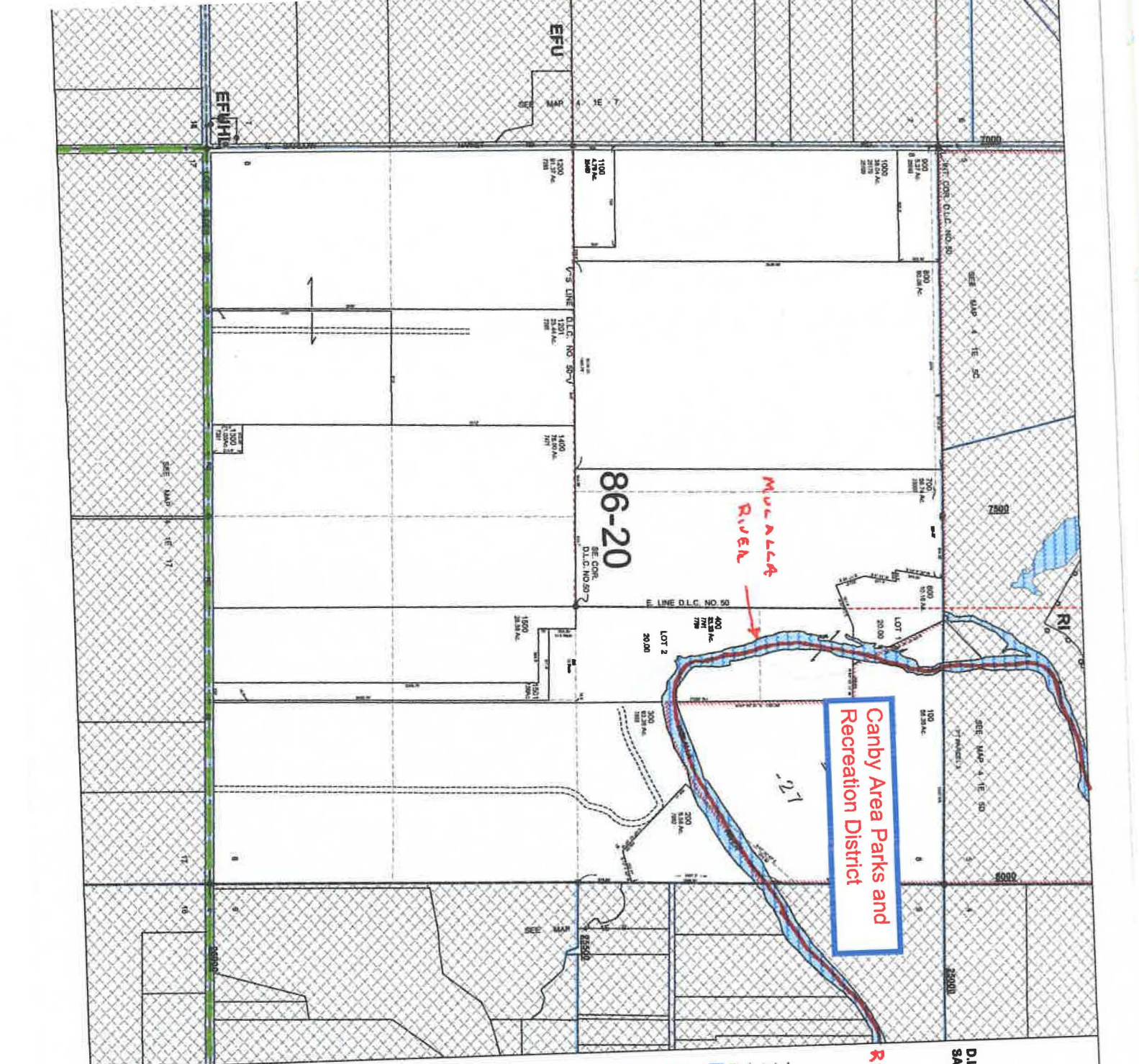
THIS MAP IS FOR ASSESSMENT  
PURPOSES ONLY.



Mucalla  
River

86-20

221



SECTION 5 T.4S. R.1E. W.M.  
CLACKAMAS COUNTY

1" = 400'

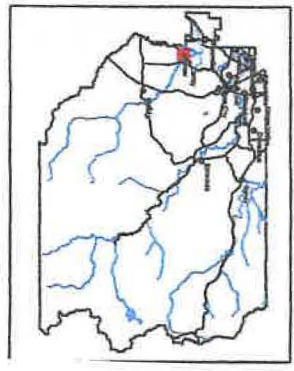
D. L. C. S.  
LUCIUS A. SEELEY NO. 48  
SAMUEL K. BARLOW NO. 50

Cancelled Tracts

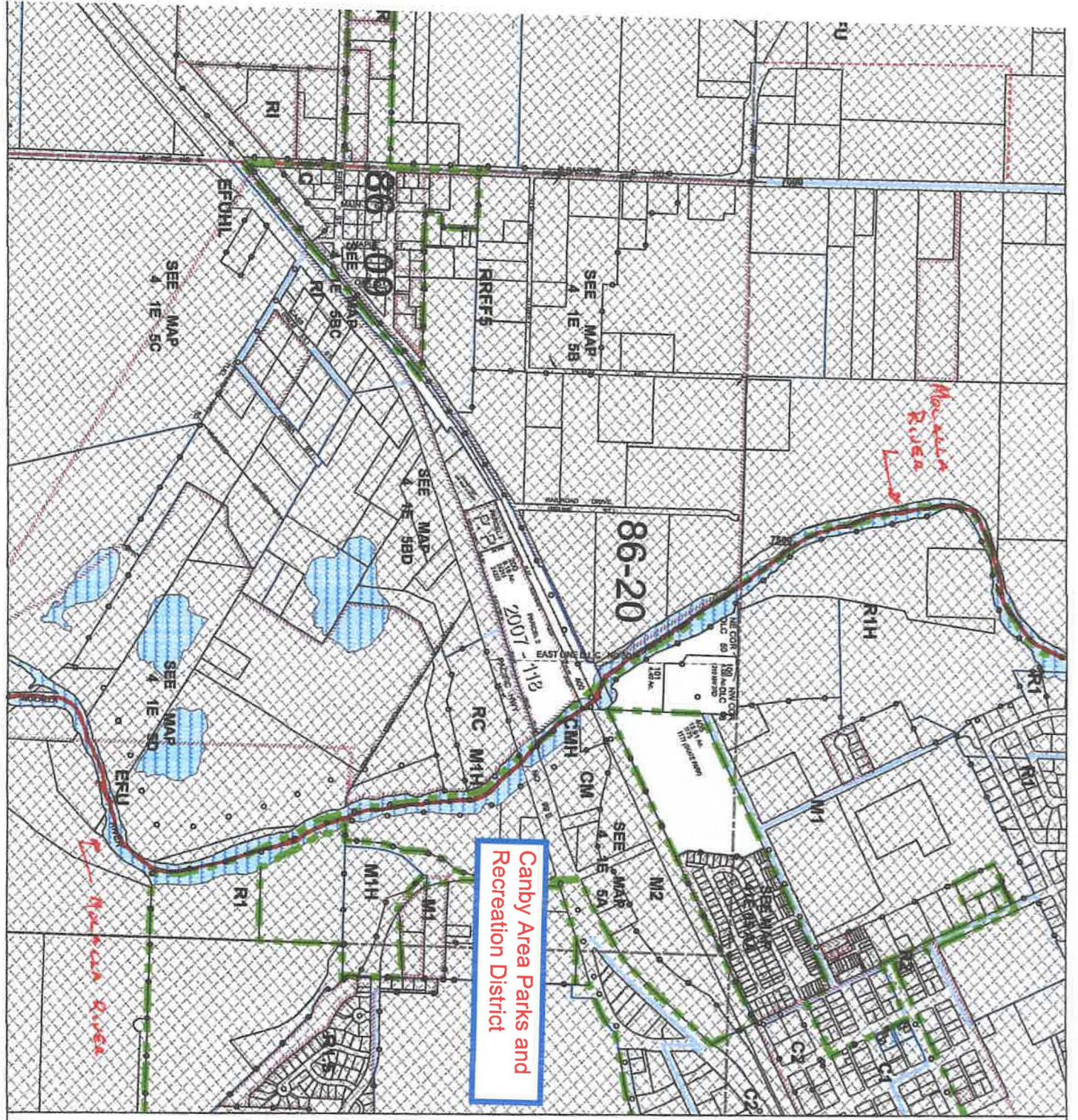
Revised Date:  
3-25-2022

|     |
|-----|
| 201 |
| 202 |
| 203 |
| 204 |
| 205 |
| 206 |
| 207 |
| 208 |
| 209 |
| 210 |
| 211 |
| 212 |
| 213 |
| 214 |
| 215 |
| 216 |
| 217 |
| 218 |
| 219 |
| 220 |

- Parcel Boundary
- Private Road ROW
- Historical Boundary
- National Centerline
- Railroad Lines
- Map Index
- Water Lines
- Land Use Zoning
- Water
- Corner
- Section Corner
- 1/8th Line
- Quarter Line
- D.L.C. Line
- Master Line
- Public Section Line
- Historic Center of
- Historic Center 20'



THIS MAP IS FOR ASSESSMENT  
PURPOSES ONLY

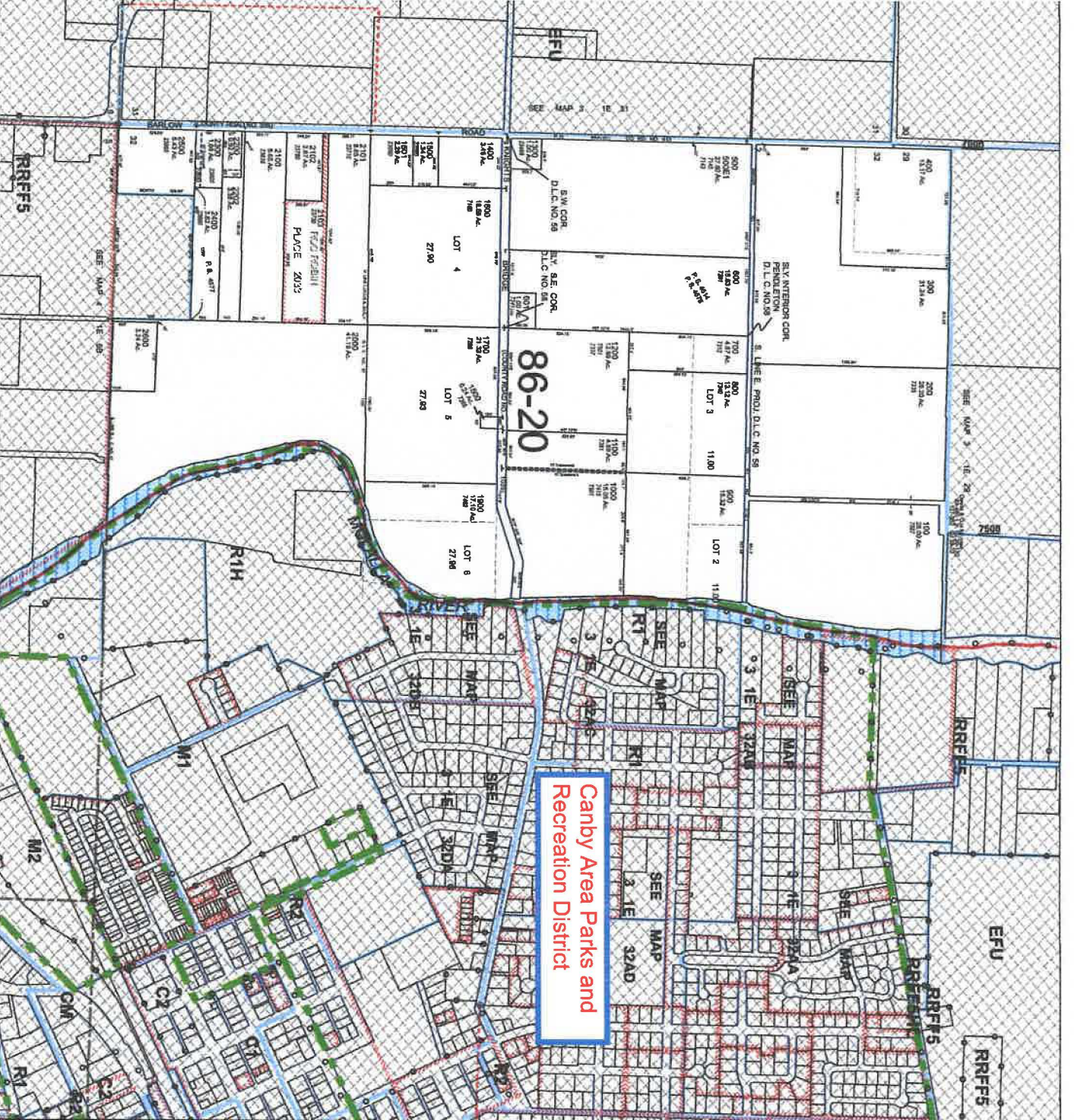


Canby Area Parks and  
Recreation District

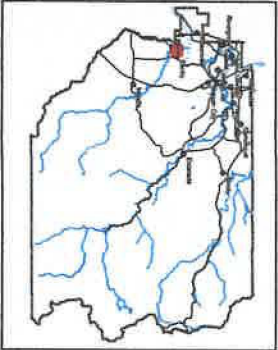
SECTION 32 T.3S. R.1E. W.M.  
CLACKAMAS COUNTY  
1" = 400'

D. L. C.'S  
C. PENDLETON NO. 58  
LUCIUS A. SEELY NO 57 & 48

Copyright/Traverse  
NORTH  
1988  
1991  
2011



- Parcel Boundary
- Private Right ROW
- Historical Boundary
- Railroad Corridor
- TracCode Lines
- Map Index
- Waterline
- Land Use Zoning
- Plat
- Water
- Corner
- Section Corner
- 1775th Line
- Grwy Lot Line
- D.L.C. Line
- Meander Line
- P.L.S.S. Section Line
- Historic Corridor 47
- Historic Corridor 20



THIS MAP IS FOR ASSESSMENT PURPOSES ONLY

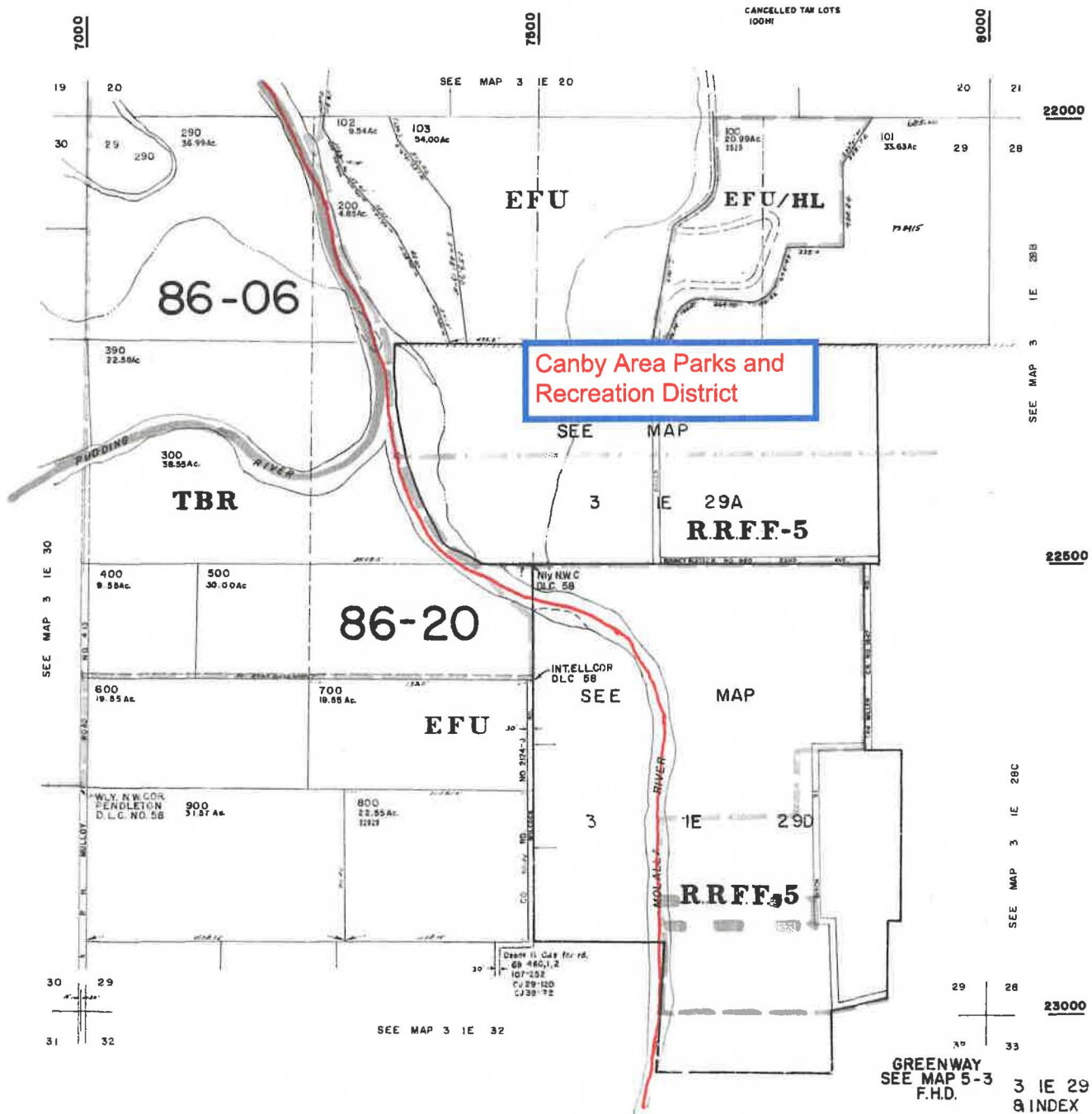


This map was prepared for assessment purpose only.

SECTION 29 T.3S. R.1E. W.M.  
CLACKAMAS COUNTY  
1"=400'

D.L.C.  
C. PENDLETON NO. 58

3 IE 29  
& INDEX



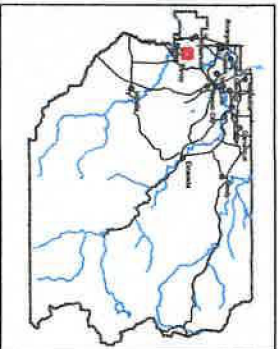


SECTION 20 T.35S. R.1E. W.M.  
CLACKAMAS COUNTY  
1" = 400'

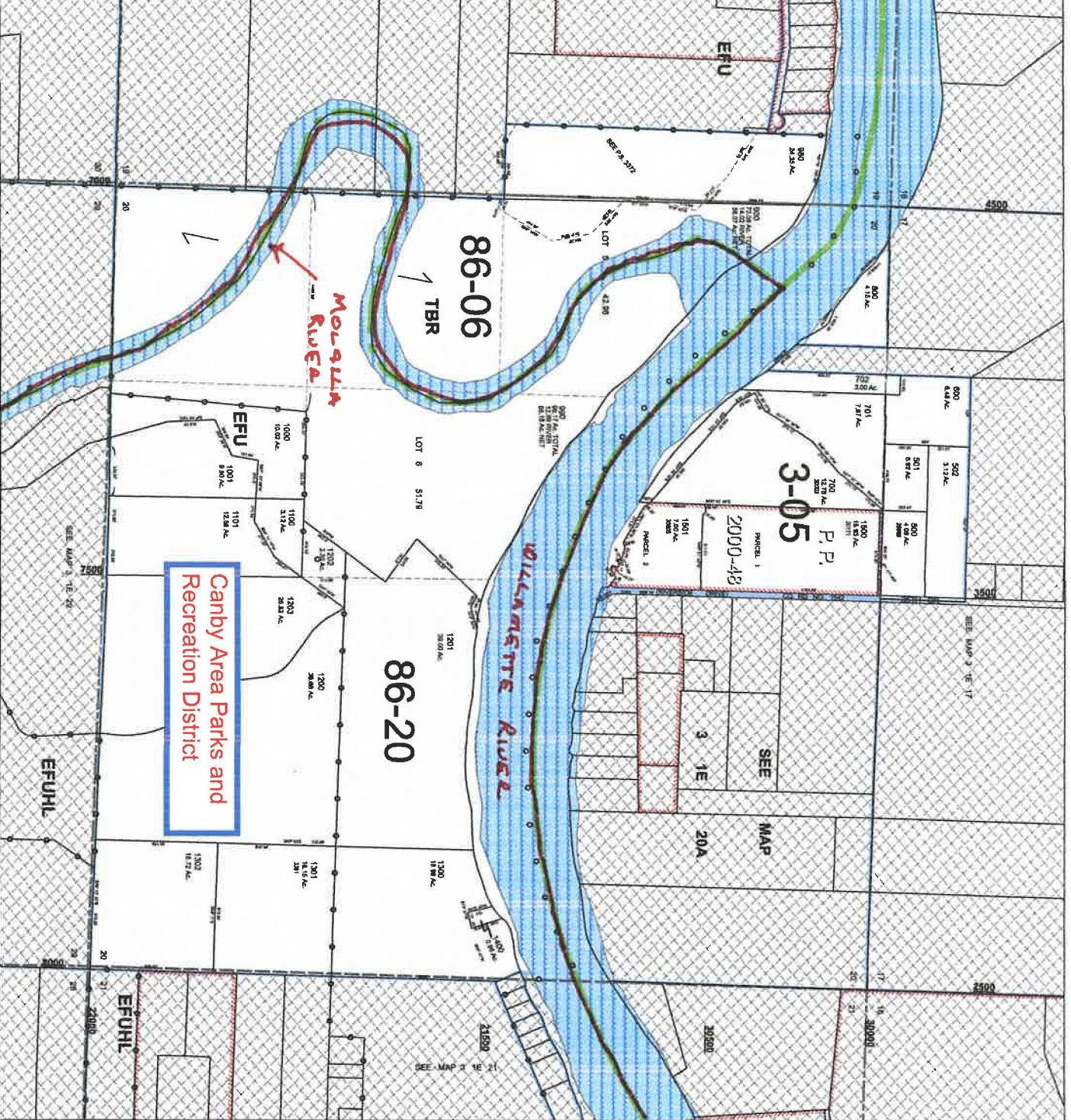
**REVISION DATE**  
**3-25-2022**

**GENERAL TOLERANCES**  
1/8"  
1/32"  
1/64"  
1/128"  
1/256"  
1/512"

- Parcel Boundary
- Private Road ROW
- Historical Boundary
- Railroad Corridor
- Traceline
- Map Index
- Viewline
- Land Use Zoning
- Water
- Corner
- Section Corner
- 1/4th Line
- Govt Lot Line
- DLC Line
- Meander Line
- PLS Section Line
- Historic Corridor 47
- Historic Corridor 20

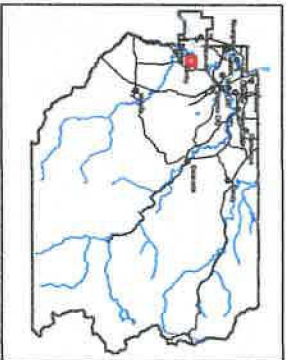


THIS MAP IS FOR ASSESSMENT PURPOSES ONLY



Cartographer: J. JAKOBA  
2001  
2002  
2003  
2004  
2005  
2006  
2007  
2008  
2009  
2010  
2011  
2012  
2013  
2014  
2015  
2016  
2017  
2018  
2019  
2020  
2021  
2022  
2023  
2024  
2025  
2026  
2027  
2028  
2029  
2030

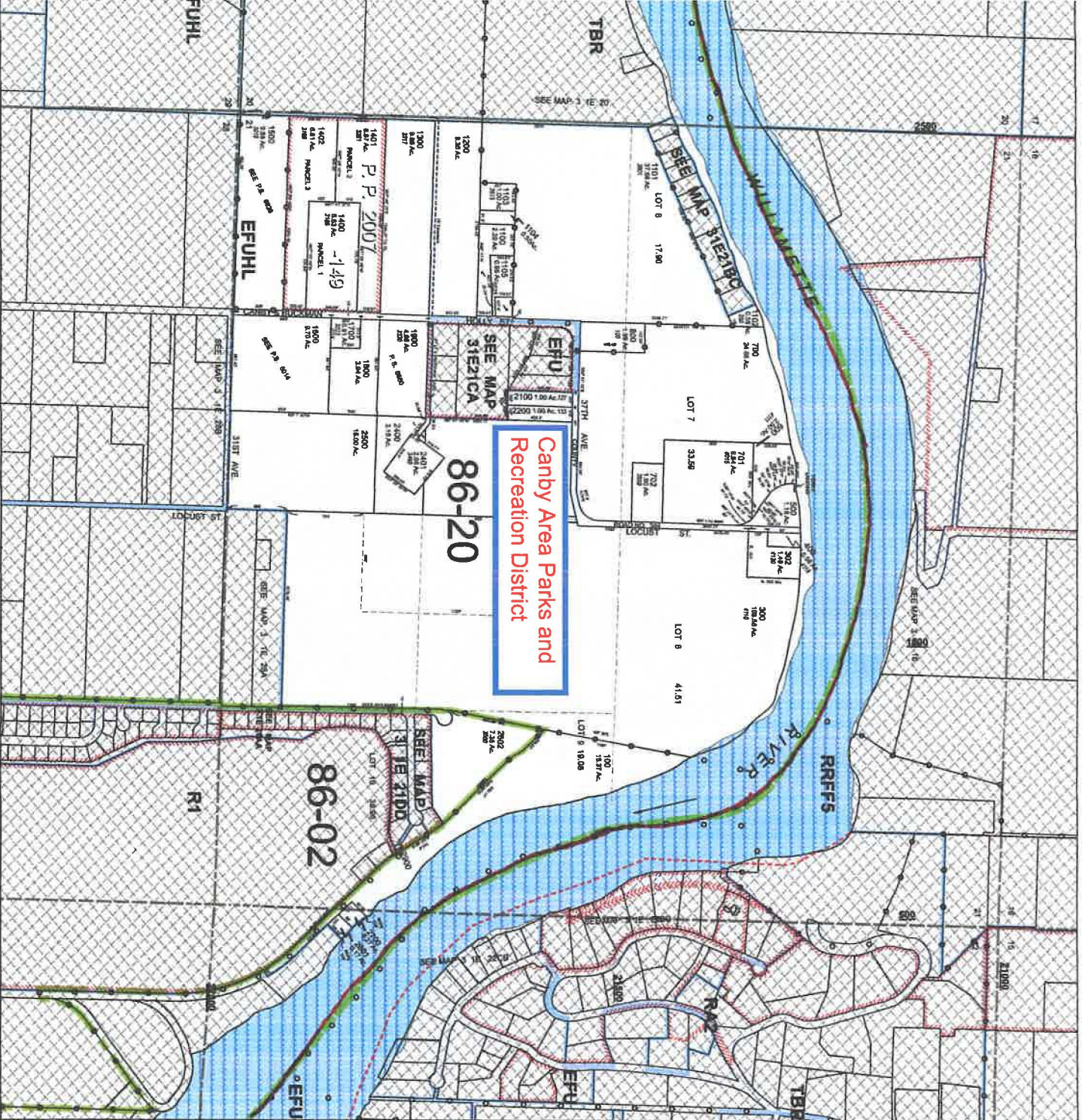
- Parcel Boundary
- Private Road ROW
- Historical Boundary
- Railroad Centerline
- Trench/Utility Lines
- Map Index
- Water Lines
- Land Use Zoning
- Pave
- Water
- Corner
- Section Center
- 1/16th Line
- Gov't Lot Line
- D/C Lot Line
- Meander Line
- P.L.S.S. Section Line
- Historic Corridor 40'
- Historic Corridor 20'



THIS MAP IS FOR ASSESSMENT PURPOSES ONLY



HERNDON



Canby Area Parks and Recreation District

86-20

86-02



12/7/2021

To whom it may concern:

I have reviewed the proposed legal description for the Canby Area Parks and Recreation District that was provided, and have made changes to insure it accurately reflects the intended boundary as depicted in the sketch.

Sincerely,  
TerraCalc Land Surveying, Inc.

A handwritten signature in black ink, appearing to read "D. Harr", with a long horizontal flourish extending to the right.

Darren Harr, P.L.S.  
Oregon P.L.S. No. 56181

All that part of the Canby Area Parks and Recreation District is to be withdrawn EXCEPT the following described area;

BEGINNING AT THE INTERSECTION OF THE LINE OF ORDINARY LOW WATER OF THE SOUTHERLY BANK OF THE WILLAMETTE RIVER WITH THE EASTERN BOUNDARY OF SECTION 27, TOWNSHIP 3 SOUTH, RANGE 01 EAST, WILLAMETTE PRINCIPAL MERIDIAN;

THENCE SOUTH ALONG THE EASTERN BOUNDARY OF SECTIONS 27 AND 34 OF TOWNSHIP 3 SOUTH, RANGE 01 EAST, WILLAMETTE PRINCIPAL MERIDIAN TO THE SOUTHEAST CORNER OF SECTION 34;

THENCE CONTINUING SOUTH ALONG THE EASTERN BOUNDARY OF SECTION 3, TOWNSHIP 4 SOUTH, RANGE 01 EAST TO ITS INTERSECTION WITH THE CENTERLINE OF SE 13TH STREET;

THENCE WESTERLY ALONG THE CENTERLINE OF SE 13TH STREET TO ITS INTERSECTION WITH THE WESTERN BOUNDARY OF THE EAST ONE-HALF OF SECTION 3, TOWNSHIP 4 SOUTH, RANGE 01 EAST;

THENCE SOUTH ALONG THE WESTERN BOUNDARY OF THE EAST ONE-HALF OF SECTION 3, TOWNSHIP 4 SOUTH, RANGE 01 EAST TO THE SOUTH BOUNDARY OF SECTION 3;

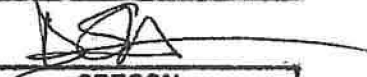
THENCE WEST ALONG THE SOUTH BOUNDARY OF SECTION 3, TOWNSHIP 4 SOUTH, RANGE 01 EAST TO ITS INTERSECTION WITH THE LINE OF ORDINARY LOW WATER OF THE MOLALLA RIVER;

THENCE WESTERLY AND NORTHERLY ALONG THE LINE OF ORDINARY LOW WATER OF THE MOLALLA RIVER TO ITS INTERSECTION WITH THE LINE OF ORDINARY LOW WATER OF THE WILLAMETTE RIVER;

THENCE EASTERLY ALONG SAID LINE OF ORDINARY LOW WATER OF THE WILLAMETTE RIVER TO THE POINT OF BEGINNING.

Revision date: March 25, 2022

REGISTERED  
PROFESSIONAL  
LAND SURVEYOR

  
OREGON  
JANUARY 11, 2008  
DARREN S. HARR  
58101

EXPIRATION DATE: 6/30/23

**From:** Anne Meader <[almeader48@gmail.com](mailto:almeader48@gmail.com)>  
**Sent:** Wednesday, March 22, 2023 10:18 PM  
**To:** BCCMail <[bcc@clackamas.us](mailto:bcc@clackamas.us)>  
**Subject:** Testimony for the BCC meeting March 23, 2023

**Warning: External email. Be cautious opening attachments and links.**

---

---

**To: Clackamas County Commissioners Smith, Savas, Shrader, West, and Shull**

My name is Anne Meader and I live in Oregon City, Oregon. On Tuesdays, I deliver food boxes for the Clackamas Service Center. I frequently deliver food to people who are temporarily housed in motels in Clackamas County, including the motel on Sunnyside Road which was recently approved for purchase by Clackamas County through the Turnkey Project. I was elated when I learned of the approval, hoping it would be a good beginning in alleviating the homeless situation in my county. As a citizen, I hear a lot of grumbling and much talk about the 'problem,' but I really haven't seen much progress on a solution for many years now. The homeless situation just increases, so I was so hopeful this would be the beginning of more purchases to come. The idea of getting people out of tents and into temporary, safe, and stable housing along with providing supportive services works – it's proven.

But now, all of a sudden, Chair Smith has reversed her yes vote and wants to study homelessness? Really? I have just one question for Chair Smith. Why? Please tell the citizens of Clackamas County exactly why you are now changing your vote, walking away from millions of dollars in financing to house and assist homeless individuals? Why are you rejecting proven solutions? Why you are dismissing the research already done by your own Clackamas County employees? When you voted in favor of the purchase, you spoke persuasively about the need for this housing, and now you want to study homelessness. What changed between then and now? I think the citizens of Clackamas County deserve to hear your answer.

Chair Smith and Commissioners Savas, Shrader, West, and Shull,

My name is Ellen Burns. I live in Gladstone, a rent burdened city in Clackamas County.

On Tuesday I delivered a box of food from the Clackamas Service Center to a middle-aged man who was not at the address I was given for delivery. He had lost his apartment and was staying with a friend. For the homeless count, "couch surfing", moving from place to place to find refuge, is not considered homelessness. But he considered himself homeless. He also said he needed "snack food" because he did not have any means to cook in his current situation. He was hoping to get into transitional housing in a hotel.

Moving houseless neighbors into transitional housing in a hotel was the hope and expectation I had following the vote by the County Commissioners to approve the purchase of a hotel for that purpose through Project Turnkey.

Commissioner Savas clearly outlined the benefits of purchasing a hotel vs. paying market rent to house people who were otherwise unsheltered. Commissioner Shrader addressed our shared humanity. Chair Smith spoke to the wisdom of moving forward on addressing the homelessness crisis and taking advantage of the available funds from Metro and the State of Oregon. Until yesterday.

Yesterday Chair Smith pulled the floor out from under the houseless both figuratively and literally.

Instead of acting to alleviate the homeless crisis in Clackamas County, Chair Smith is calling for a study. This approach is dismissive of the work of county staff, including Vahid Brown and others who have been studying the problem for years. Social service workers see the problem first hand. If there is anyone in the room who has not seen a tent or a tarp along the interstate, under a bridge, or along a hiking path I would be very surprised.

Houselessness is a humanitarian crisis in our country and our county. Housing the homeless is a benefit to everyone in Clackamas County by providing safety and livability for all. If we want to see people NOT living on our sidewalks and parks, we need to act now.

Chair Smith appeared to act with conviction, compassion, and good fiscal sense when she voted to move forward with the Turnkey project. Reneging on that promise leaves the people of Clackamas County with a continuing crisis and millions of housing dollars left on the table.

## Mayernik, Anthony

---

**From:** Kelly Lenox <kellylenox@gmail.com>  
**Sent:** Thursday, March 23, 2023 11:37  
**To:** Clerk to the Board  
**Subject:** testimony for today's meeting

**Warning: External email. Be cautious opening attachments and links.**

---

I am on Zoom and don't have the option to raise a hand on my connection. Here is my testimony/question. Please call on me if you can!

My name is Kelly Lenox. I am a property owner in unincorporated Clackamas County and part of Oak Grove United Methodist Church.

A few minutes ago you said something like "Nobody who wants to be housed is left on the streets." At best, that is denial. That statement is wrong today, it was wrong yesterday, and it will remain wrong tomorrow. Untrue. In this county and in this state.

Each time you say that is a slap in the face to every child and adult who is on the street right now, as we advocate for them from our dry, heated spaces. Your own county data contradict you.

The people who oppose Project Turnkey today opposed it a month ago. This county has never made its planning decisions based solely on the preferences of the adjoining property owners. Why have you chosen to start now?

--

Writer at [Mama Ephemera's Muddy Feet](#)  
[www.kellylenox.com](http://www.kellylenox.com)

The Brightest Rock: 2018 Brockman-Campbell Book Award Honorable Mention

Ring the bells that still can ring.  
Forget your perfect offering.  
There is a crack, a crack in everything--  
that's how the light gets in.  
--Leonard Cohen

From: Michele Bradfute <[MBradfute@nwfs.org](mailto:MBradfute@nwfs.org)>

Sent: Wednesday, March 22, 2023 9:58 PM

To: BCCMail <[bcc@clackamas.us](mailto:bcc@clackamas.us)>

Subject: Written testimony

**Warning: External email. Be cautious opening attachments and links.**

---

Clackamas County Chair Smith,

I am incredibly saddened and broken hearted with your decision to halt progress and turn down a grant from the state to help our neighbors. We must act with urgency in order to help our unhoused neighbors move from homelessness into housing and solve this humanitarian crisis. What we don't need is more studies and "Blue Ribbon" task forces. The people of Clackamas County NEED action...ALL of the people of Clackamas County to include those that don't have a solid roof over their head. They are also your constituents and you are charged with their needs as well. The people and businesses of Clackamas County are paying for solutions—we should put these resources to use.

There is no question homelessness is the #1 issue in our region. Everyone wants the problem solved but it seems no one wants the solution to be in "their neighborhood." The amazing thing is that it is already there, which "they" speak out against as well. Regardless the people that a "no" vote protects and supports are going to continue to complain and blame someone for the problem. No one benefits with a "no" but lives can and will be changed with action to move forward. This new housing site has the potential to **CHANGE LIVES** for the better. This can and will change lives by giving people hope, encouragement and value. You do have the power to do that with by changing your vote to go through with the purchase. Clackamas County now has millions of public dollars to address this issue from taxpayers and the state, yet under your leadership, it is failing to address the needs of our community. We can only solve this crisis with bold, urgent action. Action that you seem to have all the power to take, I urge you to change your vote and go through with the purchase. This is your opportunity to set change in motion and support those that need a boost right now.

**MICHELE BRADFUTE, BS, QMHA, CADCI**

*PRONOUNS SHE/HER*

DIRECTOR OF YOUTH BEAIVORAL HEALTH AND PREVENTION SERVICES



503-546-6377 (office)

971-312-7111 (direct)

503-546-9397 (fax)

[Mbradfute@nwfs.org](mailto:Mbradfute@nwfs.org)

[www.nwfs.org](http://www.nwfs.org)

\*\*\*\*\*CONFIDENTIALITY

NOTICE\*\*\*\*\* This electronic mail may contain confidential information that is being transmitted to and only for the use of the recipients named above. Reading, disclosure, discussion, dissemination, distribution, or copying this information by anyone other than the intended recipients or his or her employees or agents is strictly prohibited. If you have received the electronic mail in error, please immediately destroy it and contact me at [MBradfute@nwfs.org](mailto:MBradfute@nwfs.org).

\*\*\*\*\*  
\*\*\*\*\*