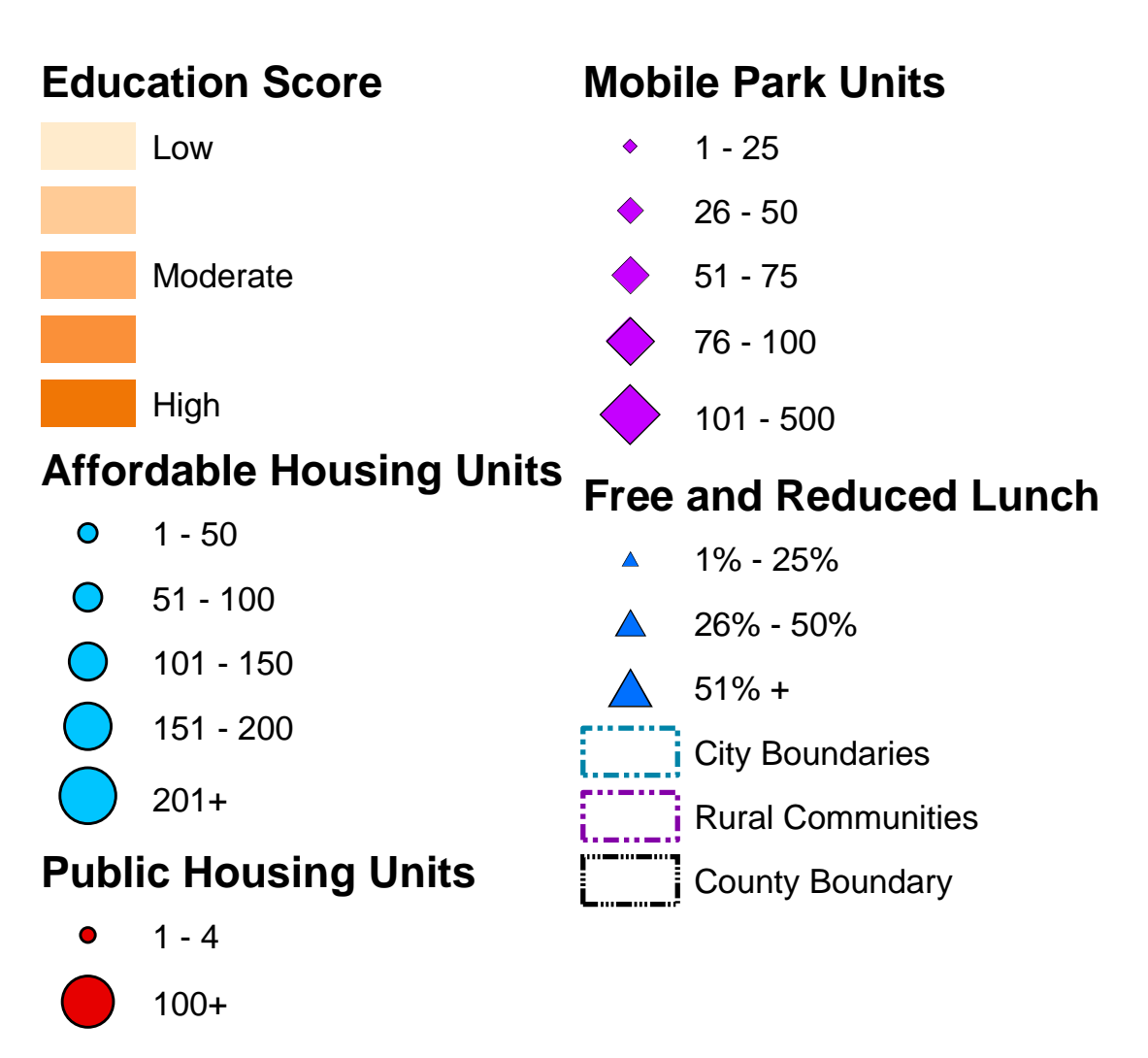
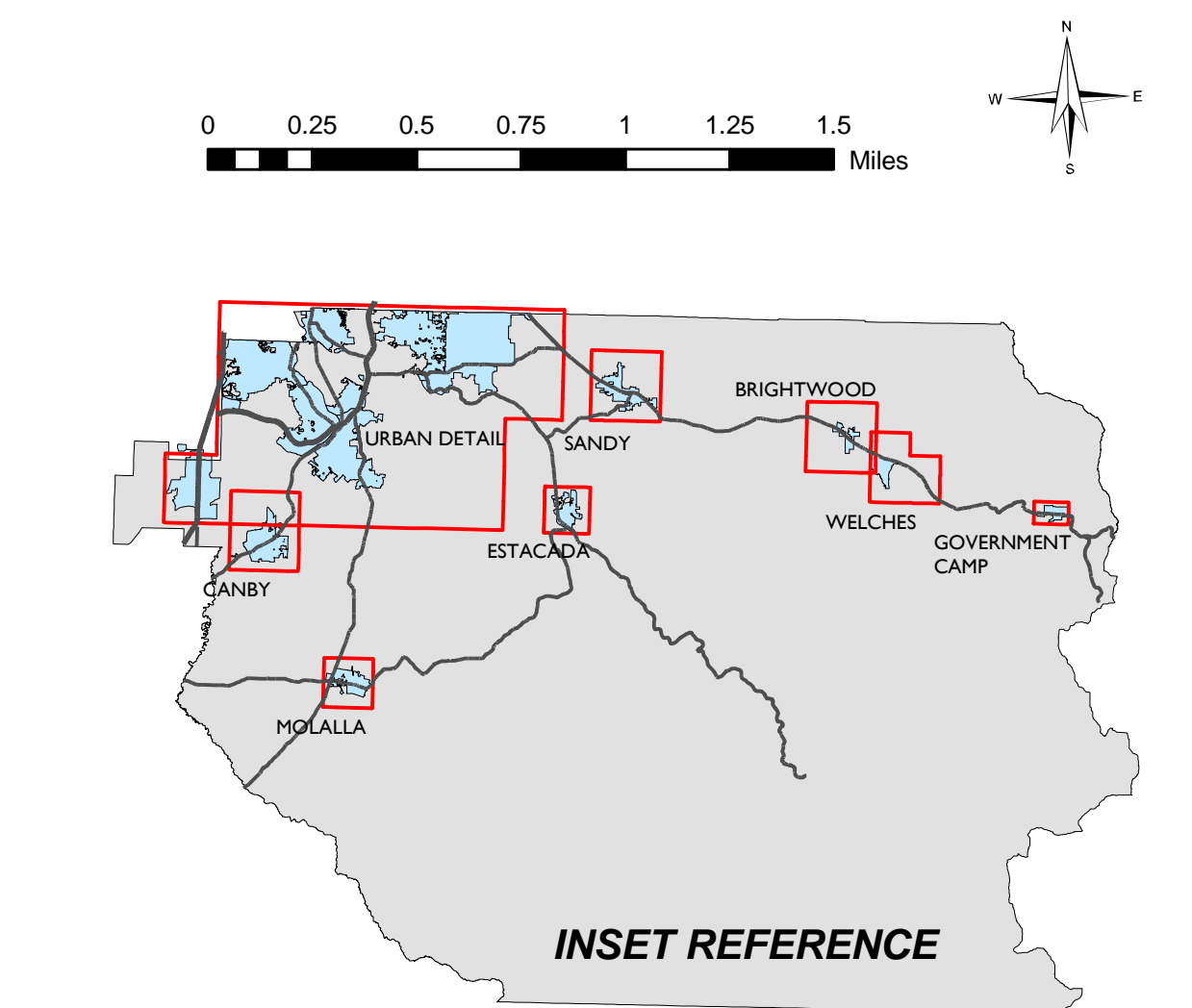
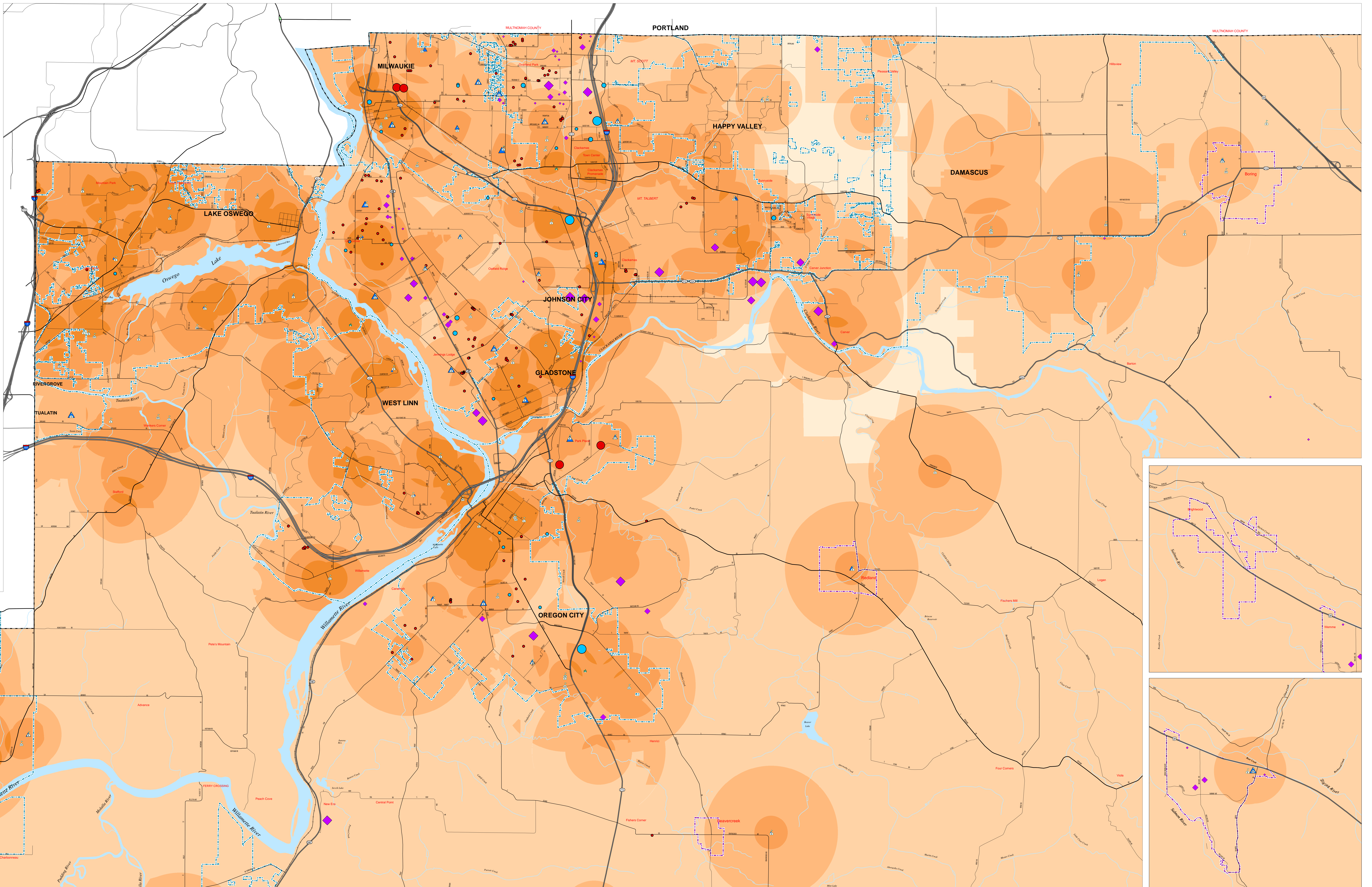


EDUCATION OPPORTUNITY MAP CLACKAMAS COUNTY



Clackamas County Opportunity Scores - Methodology

Category	Weight	Indicator	Relative Weight
Education	1/5	Average ODE Report Card Score (Elementary, Middle, High)	33%
		Outstanding 7 points, Satisfactory 7 points, In Need of Improvement 4 points	33%
		Proximity to Elementary & Secondary Schools	33%
Economic	1/5	Density (by number & size of firms) of higher wage industries in 1-mile radius	66%
		Density (by number & size of firms) of lower wage industries in 1-mile radius	33%
		Proximity to Adult Education Resources	33%
Health Care	1/5	Proximity to Health Care Providers	100%
		Proximity to Health Care Providers	100%
		Proximity to Health Care Providers	100%
Transportation	1/5	Proximity to Transit	100%
		Proximity to Transit	100%
		Proximity to Transit	100%
Community	1/5	Proximity to Parks	33%
		Proximity to Food Sources (except convenience stores)	33%
		Proximity to other Community Resources	33%



CLACKAMAS
COUNTY

DEPARTMENT OF INFORMATION SERVICES/GEOSPATIAL INFORMATION SYSTEMS
501 LIBRARY COURT
OREGON CITY, OREGON 97143

MAP CREATED OCTOBER 2011

