

April 11, 2019

Board of Health  
Clackamas County

Members of the Board:

Emerging Public Health Issues in Clackamas County

<b>Purpose/Outcome</b>	Clackamas County's Health Officer, Dr. Sarah Present, and Assistant Health Director, Julie Aalbers, will present an emerging public health issue to the Board of Health – Declining Vaccination Coverage in Clackamas County.
<b>Dollar Amount and Fiscal Impact</b>	The fiscal impact of an outbreak of vaccine preventable disease has not been calculated. Each case of a vaccine preventable disease results in monitoring and possible vaccination of case contacts, public and health care provider communications, and advice and enforcement of quarantine.
<b>Funding Source</b>	Public Health Immunization program - \$22,990 Federal (HHS) via OHA + \$68,971 State (OHA) + \$107,932 County General Fund = \$199,893
<b>Duration</b>	NA
<b>Previous Board Action/Review</b>	NA
<b>Strategic Plan Alignment</b>	1. How does this item align with your department's Strategic Business Plan goals? Sustaining public health and wellness. 2. How does this item align with the County's Performance Clackamas goals? Ensuring safe, healthy, and secure communities.
<b>Counsel Review</b>	NA
<b>Contact Person</b>	(Primary) Richard Swift, RSwift@clackamas.us, 503.650.5694 (Secondary) Julie Aalbers, Julieaal@co.clackamas.or.us, 971.284.1976
<b>Contract No.</b>	NA

**BACKGROUND**

**Declining vaccination coverage in Clackamas County** – The presentation will outline the following: (1) the current issues related to vaccines; (2) the decline in immunization rates among certain groups; (3) the school exclusion process and vaccine exemptions; (4) Public Health's role in stopping vaccine-preventable diseases; and (5) Clackamas County's strategy to improve childhood vaccination rates.

**RECOMMENDATION**

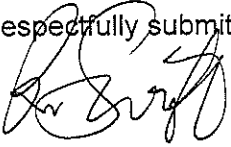
Staff recommends that the Board of Health consider the following recommendations:

- Direct H3S to expand immunization partnerships with community organizations and health systems.

*Healthy Families. Strong Communities.*

- Direct H3S to revise Performance Clackamas measures to better align with Public Health Modernization.

Respectfully submitted,

A handwritten signature in black ink, appearing to read "Richard Swift". The signature is stylized and cursive, written over the text "Respectfully submitted,".

Richard Swift, Director  
Health, Housing & Human Services

# Clackamas County Board of Health

## Declining vaccination coverage in Clackamas County

April 11, 2019



**Public Health**  
Prevent. Promote. Protect.

Health, Housing  
& Human Services   
CLACKAMAS COUNTY

# Objectives

Vaccine information and misinformation are prevalent in the news! This presentation provides the Clackamas County Board of Health -

- Science based information on Immunizations
- The current state of vaccinations in Clackamas County



# Resurgence of Vaccine Preventable Illness

## **In the first quarter of 2019 -**

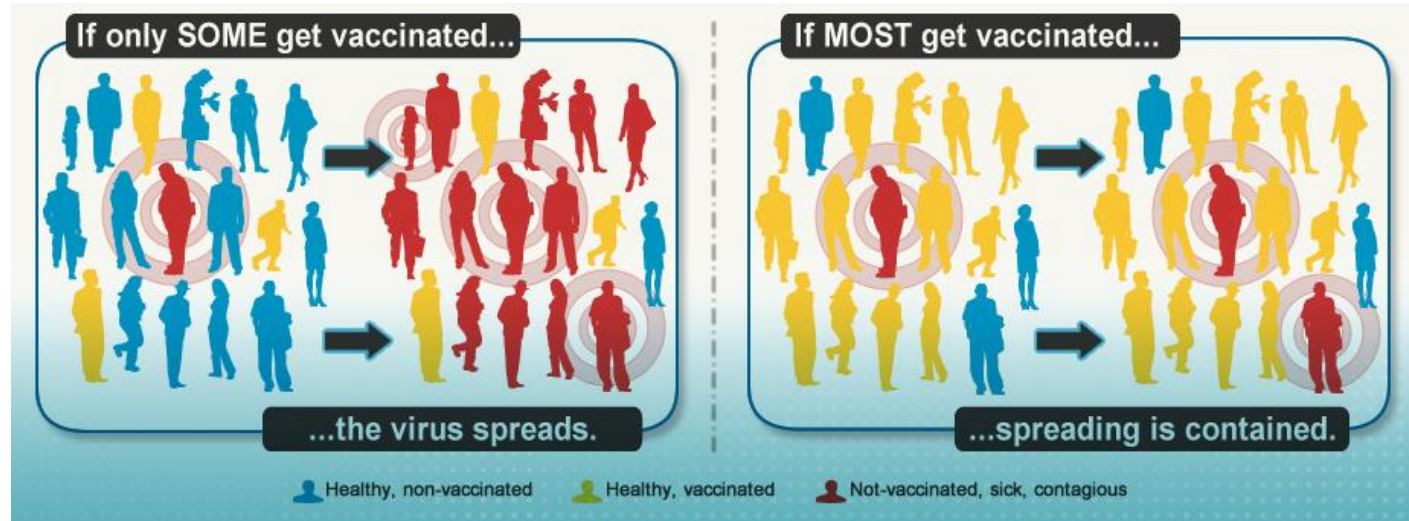
- 387 individual cases of measles have been confirmed in 15 states. This is the second-greatest number of cases reported in the U.S. since measles was eliminated in 2000 and greater than all of the cases in 2018
- 1/5 of the measles cases have occurred in the Pacific Northwest. 84 people, primarily children, in Washington and Oregon have contracted measles

# Vaccine news



- Suboptimal immunization levels have introduced a number of harmful infectious diseases back into our communities.
- The reasons for the decline within certain populations are complex.
- Clackamas County must increase vaccination rates to protect vulnerable groups and prevent infectious disease outbreaks.

# Vaccine facts



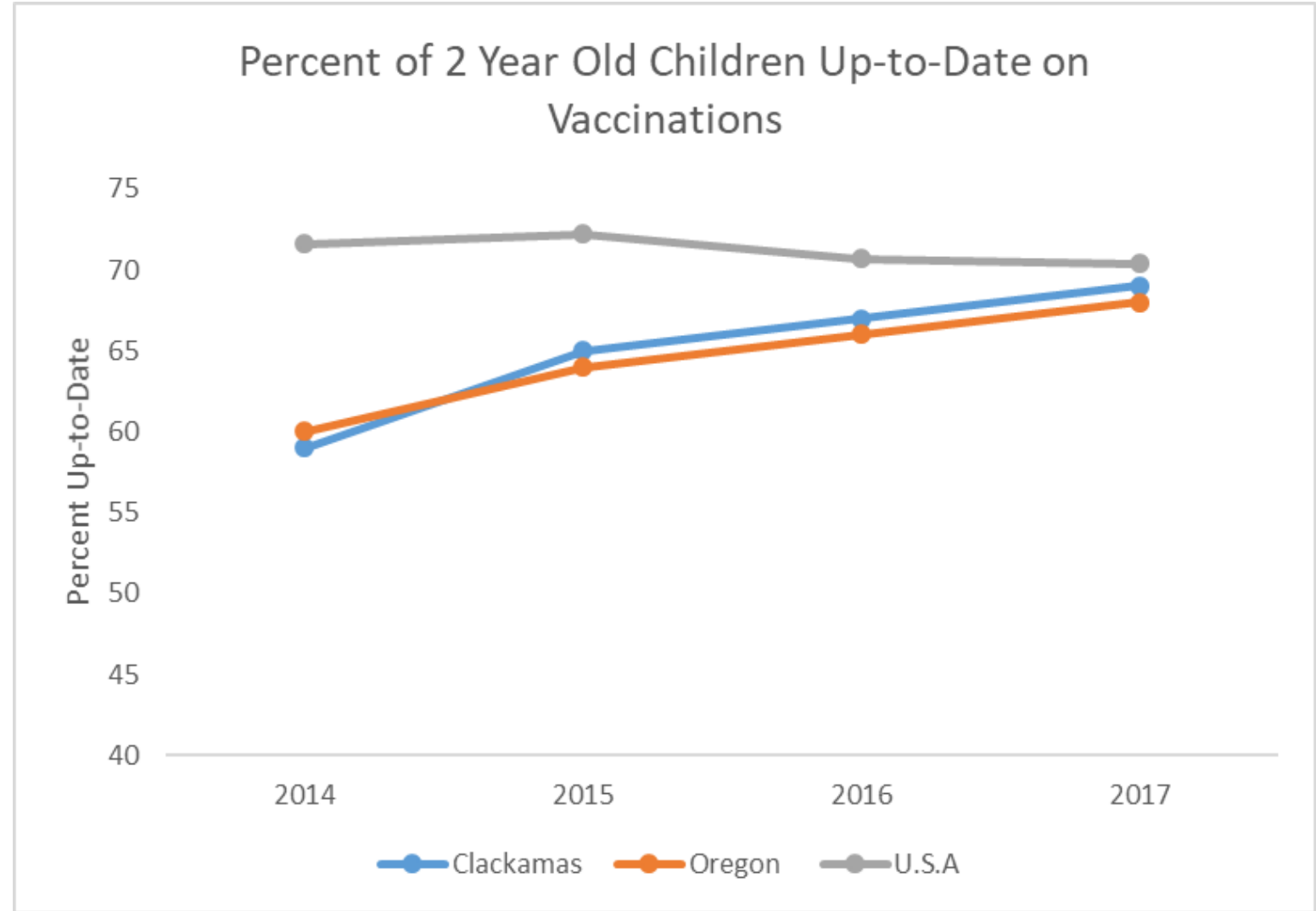
- Vaccines are safe and effective
- Vaccines save millions of lives each year
- Vaccines work best when at least 95% of the population is immunized
- If we stop vaccination, diseases will return

# Possible side-effects from vaccines

- No high-quality scientific evidence has linked any vaccine or vaccine ingredient to autism spectrum disorder.
- Vaccines are only licensed when the frequency of severe reactions is very rare and when only minor, self-limiting reactions are reported.
- **Minor Reactions**
  - Usually occur within a few hours of injection.
  - Resolve after short period of time and pose little danger.
  - Local reactions include pain, swelling, or redness.
  - Systemic reactions include fever, muscle pain, headache, loss of appetite.
- **Severe Reactions**
  - Usually do not result in long-term problems.
  - Includes seizure and allergic reactions.
    - Anaphylaxis after vaccination occurs at a rate of ~ **one per million doses** for many vaccines.
  - Are rarely life-threatening.

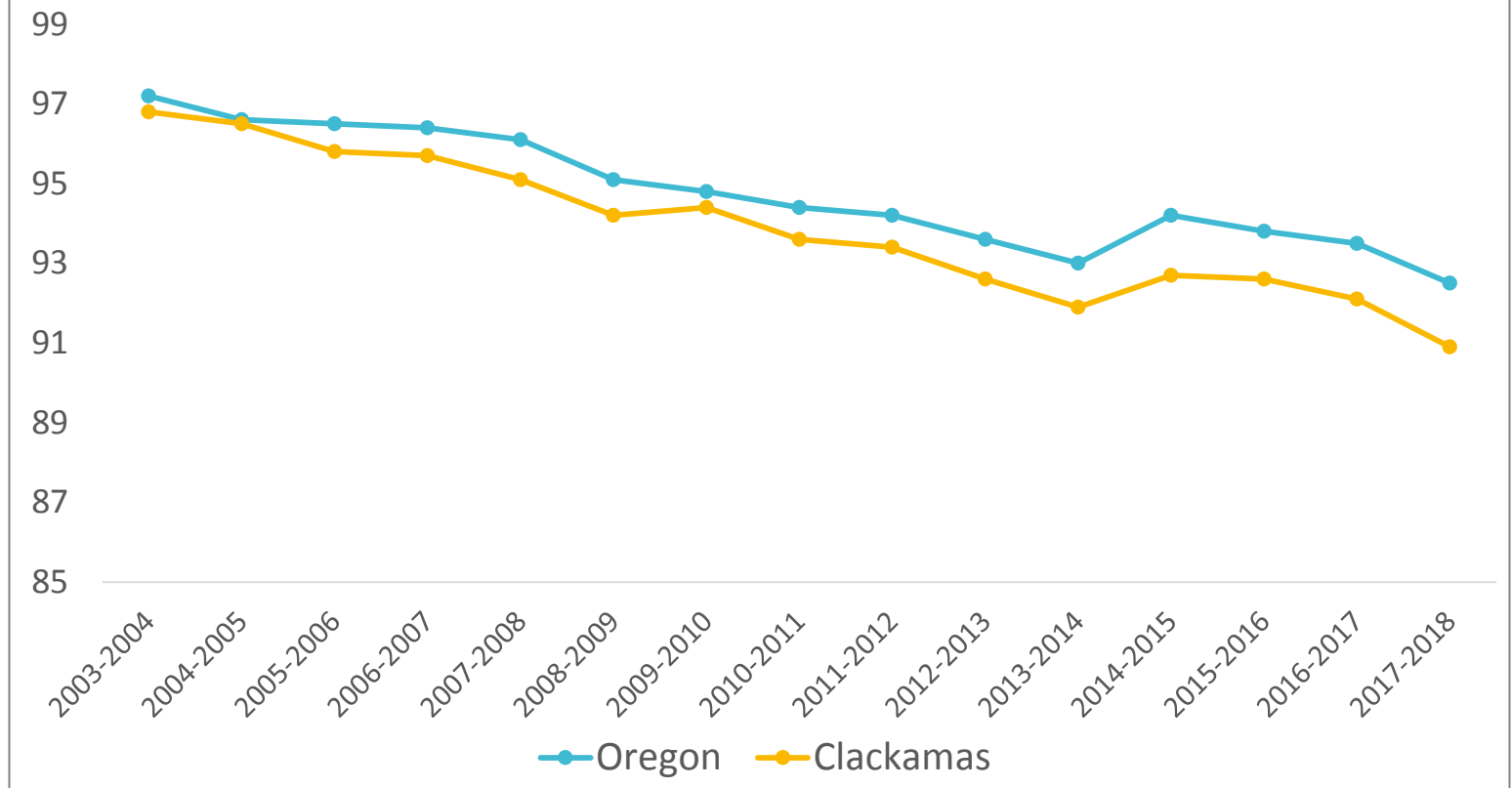


# Early childhood vaccination rates



# Kindergarten vaccination rates

## Percent of Kindergarteners who are fully vaccinated, Oregon and Clackamas County, 2003 – 2018



## School immunization laws

- State law requires every child who attends schools and certified child care centers have certain immunizations.
- School vaccination laws exist to keep children healthy and safe.
- A minority of states, including Oregon, allow exemptions to vaccines because of personal beliefs.

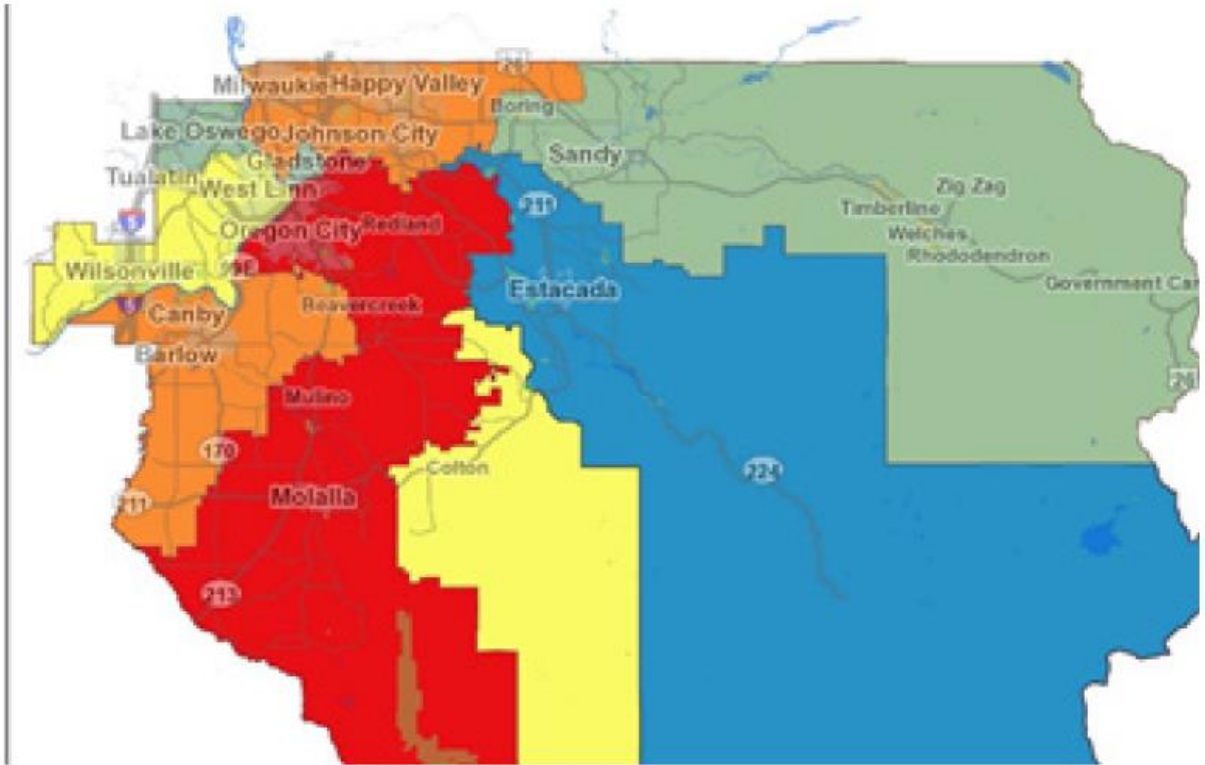
# What are medical and non-medical vaccine exemptions?

- A medical exemption is when a child cannot be vaccinated because of medical reasons.
- A non-medical exemption is a request for a child to be excluded from having to receive a vaccine or multiple vaccines.

# Non-medical exemption rates by Health Equity Zones

## Clackamas County Nonmedical Exemptions by Health Equity Zone

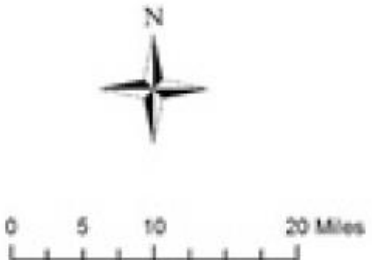
2017-2018 School Year



### Legend

Percent Nonmedical Exemptions any vaccine

- 3.0 - 4.0%
- 4.1 - 5.0%
- 5.1 - 6.0%
- 6.1 - 7.0%
- 7.1 - 8.5%



## Non-medical exemptions rates in Clackamas County

- Oregon has the highest percentage of non-medical exemptions among kindergarteners in the country.
  - 9.1% of Clackamas County kindergarteners have at least one non-medical exemption.
- 6.2% of all Clackamas County students (K-12) have one or more non-medical exemptions.
- 3.4% of all Clackamas County students (K-12) are completely unvaccinated.

## What is School Exclusion?

- Every January - March, Public Health manages the school exclusion process in Clackamas, and does the following:
  - Verifies immunization status.
  - Exercises our statutory authority to exclude children from school until they receive the required immunizations or obtain an exemption (medical or non-medical).

How does  
Public Health  
stop infectious  
disease?

- Access to Care
- Center for Public Health Advancement
- Environmental Health
- Infectious Disease Control and Prevention
- Population Health Strategies





## Access to Care – Immunization Services

- Ensures vaccine access and improves vaccine coverage
  - Manages school exclusion process
  - Monitors immunization rates
  - Addresses immunization barriers and gaps
  - Assures access to free or low cost vaccine
  - Provides vaccines during public health emergencies
  - Develops and disseminate health education messages
  - Develops vaccine policy

## Public Health Impact

Declining vaccination coverage threatens  
Clackamas County residents

Volume 2 | April 2019

Taking action to  
protect  
Clackamas  
County

### Current initiatives

- Health Impact Report on declining vaccination coverage.
- Vaccine Hesitancy social marketing campaign
  - Partnership with Health Share, Clackamas County, Multnomah County, and Washington County Public Health.
- Representation on the State Immunization Policy Advisory Team (IPAT).

### Next steps

- Direct H3S to expand immunization partnerships with community organizations and health systems.
- Direct H3S to review and revise, if needed, Performance Clackamas measures to better align with Public Health Modernization.
- Use H3S Public Health as your experts on Vaccinations