



**Clackamas County
Sheriff's Office**

Annual Crime Report 2009



Analysis of Crimes in Clackamas County

2009

Prepared by the
**Clackamas County Sheriff's Office
Crime Analysis Unit**

2223 Kaen Road • Oregon City, Oregon 97045 •
(503) 655-8823 • www.clackamas.us/sheriff

Craig Roberts, Sheriff
David Kirby, Undersheriff
Matt Ellington, Undersheriff
Shara Van Meter, Crime Analyst

Prepared May 2010



"Working together to make a difference"

CRAIG ROBERTS, Sheriff





Table of Contents

Remembering Sheriff Bill Brooks.....	4
Clackamas County at a Glance	5
Map of Patrol Districts	6
Population Totals	7
Reports Processed	8
Are Crimes Up or Down?.....	9
Crime Rates per 1,000 Population	10
All Crimes Reported	11-12
All Crimes Reported by Patrol District	13-14
Crimes by Type Graph.....	15
Crimes Reported by Month Graph.....	15
Clackamas County Jail	16
Domestic Violence Summary	17
Domestic Violence Related Crimes	18
Stolen Vehicles by Patrol District.....	19
Stolen Vehicles by Make	20
Top 10 Stolen Vehicles	20
Stolen Vehicles by Month	21
Stolen Vehicles: 10-Year History Graph	21
Towed Vehicles by Year.....	22
Recovered Stolen Vehicles by Patrol District	22
Recovered Stolen Vehicles Graph.....	23
Recovered Stolen Vehicles: 10-Year History Graph	23
Calls for Service	24-26
Calls for Service: Yearly Totals Graph	27
Property Room: 15-Year History	27
Clackamas County Inter-agency Task Force (CCITF)	28
INTERCEPT	29
S.W.A.T.....	30
Search & Rescue.....	31
Traffic.....	32
DUI Arrests	33
Death Investigations	34
2009 Sheriff's Office Awards	35
Citizens Informational Sheriff's Academy (CISA)	36
For More Information	37

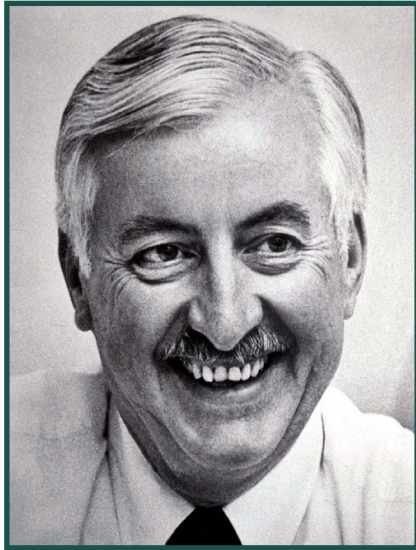


On the cover:

The Sheriff's Office Search & Rescue Team ascends Mt. Hood during a training exercise. Photo by Patrick Sherman.

Remembering Former Sheriff

Bill Brooks



Former Clackamas County Sheriff **Bill Brooks** passed away in January 2010. He was a great leader and friend to the Sheriff's Office, and we want to honor his legacy of service.

Bill started with our organization in 1953 -- after serving with the Multnomah County Sheriff's Office and the West Linn Police Department. He was appointed Clackamas County Sheriff in 1983 by the Board of County Commissioners, and he went on to win subsequent elections to the office in 1984 and 1988.

While he was Sheriff, Bill implemented several important projects that continue to serve us today. This includes a major expansion of the Clackamas County Jail.

Bill retired in 1992, after more than four decades in law enforcement. In 1995, the Oregon State Sheriff's Association honored him as its "Sheriff of the Year."

Even in retirement, Bill kept in touch with the Sheriff's Office, and he continued to work on important public safety issues -- such as the passage of Measure 57 in 2008.

He will be sorely missed.

Clackamas County at a glance

Clackamas County, named for the resident Clackamas Indians, was established July 5, 1843. Oregon City, the county seat, was the first incorporated city west of the Rockies, the first capital of the territorial government in 1848 and the site of the first state legislative session.



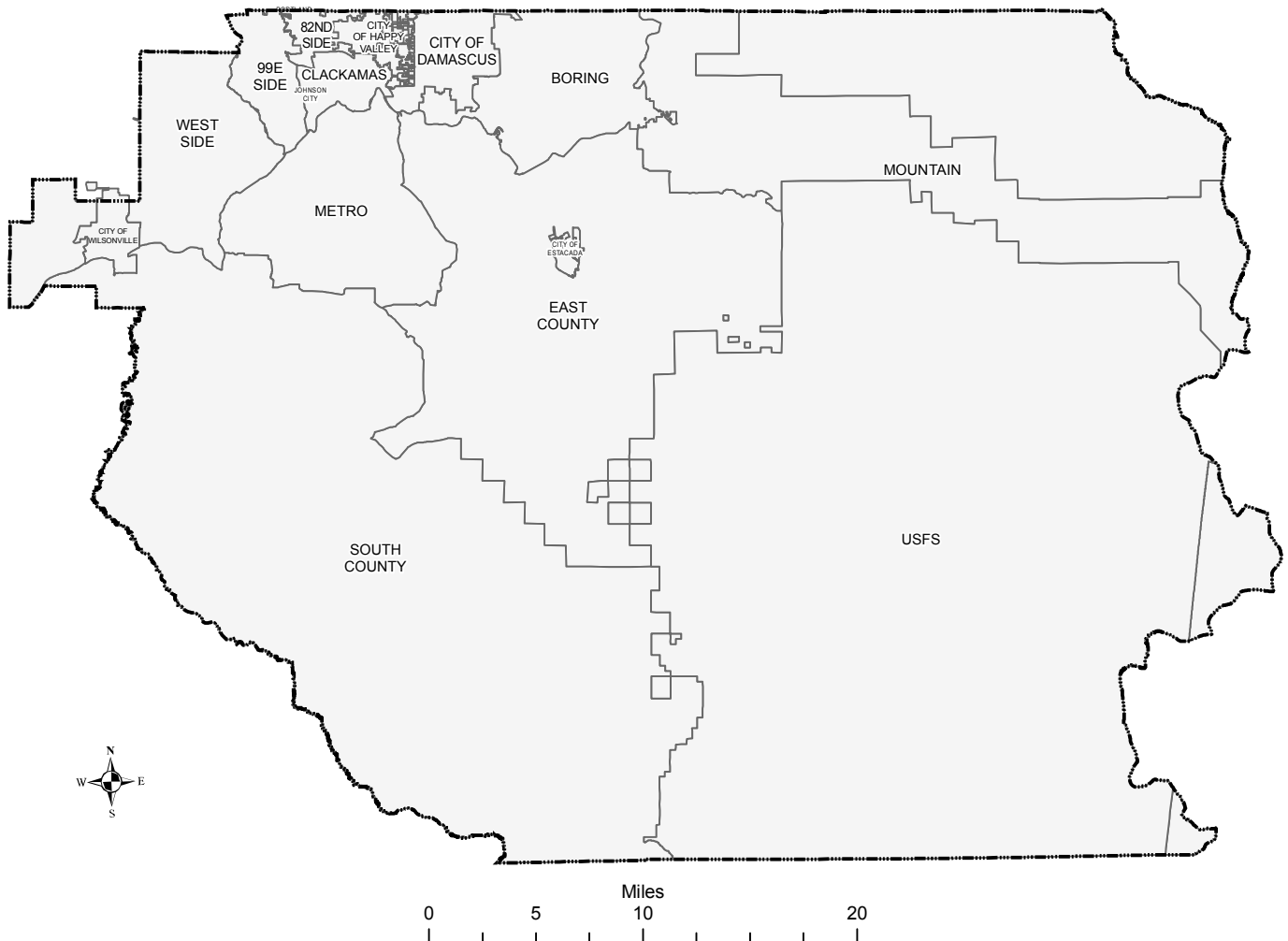
The County encompasses 1,893 square miles — well over a million acres. It ranks 18th in size and third in the state of Oregon for total population, with an estimated population of 379,845 people. About 47 percent of the population lives in urban areas, with the remaining proportion in rural areas and towns. The largest cities in the county are Lake Oswego with a population of 36,755, Oregon City with a population of 30,470, West Linn with a population of 24,400 and Milwaukie with a population of 20,920 people.

Clackamas County is located in the northern Willamette Valley of western Oregon. Hood River and Wasco Counties bound the county on the East with Multnomah County sitting to the North. Marion County borders the south and also on the west along with Yamhill and Washington Counties. Butte Creek forms most of the western boundary while the eastern boundary generally follows the crest of the Cascade Mountains.

From an elevation at Oregon City of 55 feet, Clackamas County rises to 11,235 feet at the peak of Mt. Hood on its northeastern boundary — the highest point in the state. Forest resources, lakes, rivers and streams provide numerous opportunities for hunting and fishing, as well as camping and other forms of recreation. Special points of scenic and historic interest are Willamette Falls, the McLoughlin House, Lake Oswego, Wilhoit Mineral Springs, Mt Hood and Timberline Lodge.

Patrol Districts

Clackamas County Sheriff's Office



Clackamas County Population Totals

Updated 11/23/09

Portland State University Population Research Center: <http://www.pdx.edu/prc/>

Area	2000	2001	2002	2003	2004	2005	2006	2007	2008	2009
Clackamas Co.	332,850	340,000	345,150	353,450	356,250	361,300	367,040	372,270	376,660	379,845

Incorporated Cities										
Canby	13,170	12,910	12,790	13,910	14,110	14,385	14,705	15,140	15,165	15,230
Damascus*						9,380	9,670	9,775	9,975	9,985
Estacada*	2,200	2,380	2,460	2,440	2,450	2,480	2,580	2,695	2,820	2,865
Gladstone	12,020	11,470	11,450	11,790	12,140	12,170	12,210	12,200	12,215	12,215
Happy Valley*	4,650	4,650	4,930	6,370	6,640	7,275	9,210	10,380	11,455	11,465
Lake Oswego	35,305	35,415	35,580	35,860	35,930	36,075	36,350	36,335	36,590	36,755
Milwaukie	20,250	20,540	20,550	20,580	20,590	20,655	20,835	20,920	20,915	20,920
Molalla	5,720	5,710	5,690	5,800	5,930	6,395	6,830	6,830	7,590	7,590
Oregon City	24,940	26,200	26,680	28,100	28,370	28,965	29,540	30,060	30,405	30,470
Sandy	5,655	5,425	5,380	6,200	6,360	6,645	7,070	7,595	8,005	8,205
West Linn	23,380	22,440	23,090	23,820	23,970	24,080	24,180	24,180	24,400	24,400
Wilsonville*	13,615	14,365	14,170	15,880	16,250	16,510	16,885	17,360	17,940	18,020
Total:	160,905	161,505	162,770	170,750	172,740	185,015	190,065	193,470	197,475	198,120

* Contract Cities patrolled by Clackamas County Sheriff's Office

Incorporated Cities										
Contract Cities	20,465	21,395	21,560	24,690	25,340	35,645	38,345	40,210	42,190	42,335
Other Cities	140,440	140,110	141,210	146,060	147,400	149,370	151,720	153,260	155,285	155,785

Total Unincorporated Area Patrolled by CCSO (does not include Contract Cities)										2009
Patrol Area	171,945	178,495	182,380	182,700	183,510	176,285	176,975	178,800	179,185	181,725

Total Area Patrolled by CCSO (including Damascus, Estacada, Happy Valley & Wilsonville)										2009
Patrol Area	192,410	199,890	203,940	207,390	208,850	211,930	215,320	219,010	221,375	224,060

Population of Other County Areas of Interest (these are included in the CCSO patrol area above)										
Johnson City	635	635	630	630	630	630	675	675	675	680
Barlow	140	140	140	140	140	140	140	140	140	140
Rivergrove	325	325	320	320	340	350	350	350	350	350

Reports Processed

During 2009, the Clackamas County Sheriff's Office processed 47,809 reports that were entered into C.L.A.S.S. During 2008, the Sheriff's Office processed 49,997 reports. This is a decrease of 2,188 reports or 4.4% during 2009 compared to 2008.

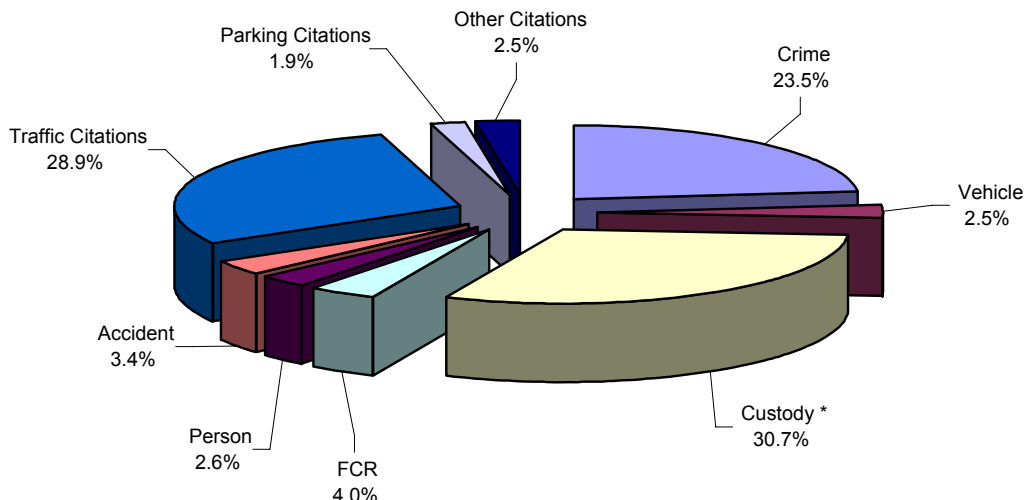
The average number of reports processed during the previous three years was 50,042.2. The 47,809 reports processed during 2009 is a decrease of 2,233.2 reports, or 4.5%.

This includes all reports processed by the Sheriff's Office, including reports written in contract cities and courtesy reports written for other agencies. Each report is only counted once, regardless of the number of crimes or violations documented in the report. For the number of reported crimes, please see the **All Crimes Reported** chart on pages 11 and 12.

The chart below is a breakdown of report types and total number processed for each type during 2009, 2008 and the average for the previous three years of 2006, 2007, and 2008.

Report Type	2009	Monthly Average	2008	Monthly Average	3 Year Average	Monthly Average	% Change From 3 Yr Average
Crime	11,213	934.4	10,839	903.3	11,091.3	924.3	1.1%
Vehicle	1,211	100.9	1,367	113.9	1,635.0	136.3	-25.9%
Custody *	14,695	1,224.6	15,388	1,282.3	16,194.3	1,349.5	-9.3%
FCR	1,897	158.1	2,167	180.6	1,874.0	156.2	1.2%
Person	1,225	102.1	1,151	95.9	1,125.3	93.8	8.9%
Accident	1,639	136.6	1,662	138.5	1,638.3	136.5	0.0%
Traffic Citations	13,833	1,152.8	15,342	1,278.5	14,427.7	1,202.3	-4.1%
Parking Citations	916	76.3	779	64.9	877.3	73.1	4.4%
Other Citations	1,180	98.3	1,302	108.5	1,179.0	98.3	0.1%
Total:	47,809	3,984.1	49,997	4,166.4	50,042.2	4,170.2	-4.5%

* Includes all custody reports processed by the Jail and Records, regardless of the arresting agency.

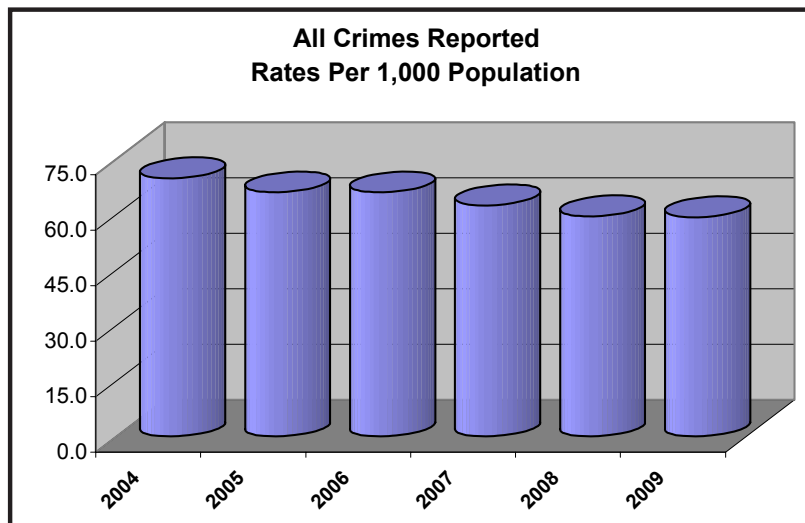


Are Crimes UP^{or} DOWN?

	2009 Change from 2008	2009 Change from 3-year Average
All Reported Crimes	-1.4%	-4.3%
Part I Crimes	-3.5%	-7.2%
Part II / Other Crimes	0.7%	-1.3%
County Top Six Crimes	-7.3%	-11.1%
• Theft	-4.9%	-4.8%
• Criminal Mischief	-21.3%	-21.4%
• Burglary	4.9%	-7.4%
• Stolen Vehicles	-10.0%	-24.9%
• Identity Theft	-10.3%	-26.0%
• Assault	-6.6%	-10.0%
Person Crimes	-0.4%	-0.8%
Property Crimes	-1.3%	-6.0%
Behavioral Crimes	-2.3%	-0.1%

Crime Rates per 1,000 population

	2009	2008	Prior 3-year Average
All Reported Crimes	59.3	61.1	63.2
Part I Crimes	29.1	30.6	32.0
Part II / Other Crimes	30.2	30.4	31.2
County Top Six Crimes	37.2	40.7	42.7
• Theft	20.8	22.2	22.3
• Criminal Mischief	5.1	6.6	6.6
• Burglary	4.3	4.2	4.8
• Stolen Vehicles	2.5	2.8	3.4
• Identity Theft	2.2	2.5	3.0
• Assault	2.3	2.4	2.5
Person Crimes	6.2	6.3	6.4
Property Crimes	40.1	41.2	43.5
Behavioral Crimes	13.1	13.6	13.3



All Crimes Reported

Part I Crimes	Type	2009	2008	3 Yr Avg. 2006/07/08
Arson	Pr	14	23	22.0
Assault, Aggravated	Pe	76	76	96.0
Burglary	Pr	790	753	853.3
Attempt Murder	Pe	6	5	7.0
Murder	Pe	3	4	3.7
Rape	Pe	48	35	40.3
Robbery	Pe	117	108	98.0
Theft (all)	Pr	3,782	3,975	3,972.3
Stolen Vehicles	Pr	457	508	608.3
Part I Totals:		5,293	5,487	5,701.0
Part II / Other Crimes	Type	2009	2008	3 Year Avg.
Assault, Simple	Pe	333	362	358.3
Child Abuse / Neglect	Pe	16	18	19.3
Crimes Against Family	Be	198	212	197.0
Criminal Mischief	Pr	925	1,175	1,176.7
Criminal Trespass	Be	135	196	166.3
Cruelty to Animals	Be	23	13	24.0
Disorderly Conduct	Be	35	43	41.7
Drug Charges (all)	Be	343	318	313.0
D.U.I.I.	Be	533	586	563.3
Forgery	Pr	202	157	221.3
Fraudulent Use of Credit Card	Pr	485	169	181.7
Harassment	Pe	239	194	204.3
Identity Theft	Pr	402	448	543.3
Kidnapping	Pe	16	10	12.0
Manslaughter/Neg. Homicide	Pe	3	0	0.3
Menacing	Pe	118	138	149.7
M.I.P. - Alcohol	Be	172	251	245.0
Negotiate a Bad Check	Pr	31	12	21.0
Offensive Littering	Be	25	26	25.0
Prostitution	Be	14	4	3.3
Public / Private Indecency	Be	12	12	13.7
Recklessly Endangering	Pe	29	32	29.7
Resisting Arrest	Be	11	17	19.0
Runaway Juveniles	Be	344	362	393.3
Sex Crimes (other)	Pe	26	52	29.7
Sexual Abuse	Pe	63	59	49.3
Sodomy	Pe	5	8	11.3
Strangulation	Pe	27	29	25.0
Unlawful Entry Into Motor Veh	Pr	197	162	154.0
Weapons Violations	Be	56	62	61.0
Crimes Not Listed Above	Be	474	329	311.0
Part II Totals:		5,492	5,456	5,563.7
Total		2009	2008	3 Year Avg.
Part I & Part II		10,785	10,943	11,264.7
Crime Types		2009	2008	3 Year Avg.
Person Crimes		1,125	1,130	1,134.0
Property Crimes		7,285	7,382	7,754.0
Behavioral Crimes		2,375	2,431	2,376.7
Recovered Stolen Vehicles		2009	2008	3 Year Avg.
Recovered Vehicles		355	403	471.3

All Crimes Reported

continued

County Top Six	2009	2008	3 Year Avg.
Theft	3,782	3,975	3,972.3
Criminal Mischief	925	1,175	1,176.7
Burglary	790	753	853.3
Stolen Vehicle	457	508	608.3
Identity Theft	402	448	543.3
Assault	409	438	454.3
Total:	6,765	7,297	7,608.3

Crimes Against Family	2009	2008	3 Year Avg.
Criminal Mistreatment	19	19	19.0
Custodial Interference	3	3	5.0
Violation of Restraining Order	176	190	173.0
Total:	198	212	197.0

Thefts by Type	2009	2008	3 Year Avg.
Theft I	753	857	927.0
Theft II	2,090	2,050	2,016.7
Theft III	707	824	855.3
Theft By Deception	39	38	25.3
Theft By Extortion	2	3	1.7
Theft By Receiving	7	10	12.7
Theft of Lost/Mislaid Property	60	70	45.0
Theft of Mail	94	108	70.3
Theft of Services	30	15	18.3
Total:	3,782	3,975	3,972.3

This only includes crimes reported to the Clackamas County Sheriff's Office within the Sheriff's Office's patrol districts. It does not include crimes reported in the contract cities of Damascus, Estacada, Happy Valley or Wilsonville. It also does not include "courtesy" crime reports for crimes occurring in other jurisdictions.

[Note: Clackamas County Sheriff's Office annual reports issued prior to 2008 did include courtesy reports. Those reports have been removed from the 3-year average calculations.]

*Sex Crimes (other) includes Luring a Minor and Online Sexual Corruption of a Child, among other crimes. These two particular crimes are new crimes as of January 1, 2008 and are proactively investigated by the INTERCEPT task force. INTERCEPT detects online predators and arrests and prosecutes them before they meet vulnerable children in person.

2009 Crimes

Reported by District

Part I Crimes	West	99E	82nd Ave	Clackamas	Boring	Mountain	Metro	East	South	Intercept	County Parks	USFS / BLM	Total
Arson		7	3		1			2	1				14
Assault, Aggravated	1	16	16	18	3	3	1	9	7		1	1	76
Burglary	28	146	107	124	59	78	52	83	111			2	790
Attempt Murder	1		2					1	1			1	6
Murder		1	1			1							3
Rape	1	7	10	12	3	2	2	6	3			2	48
Robbery	1	23	40	45	2	1	1	2	2				117
Theft (all)	104	475	926	1,621	88	148	91	98	194		11	26	3,782
Stolen Vehicles	10	74	114	138	19	22	17	24	36		2	1	457
Part I Totals:	146	749	1,219	1,958	175	255	164	225	355	0	14	33	5,293
Part II / Other Crimes	West	99E	82nd	Clack	Boring	Mtn.	Metro	East	South	Int	Parks	USFS	Total
Assault, Simple	9	72	65	81	12	20	13	32	24		3	2	333
Child Abuse / Neglect		6	4	5		1							16
Crimes Against Family	13	53	26	54	3	8	5	20	16				198
Criminal Mischief	23	217	179	262	27	37	44	43	83		3	7	925
Criminal Trespass	4	14	43	48	4	5	4	6	5		2		135
Cruelty to Animals	1	1	2	6	3	1	2	1	6				23
Disorderly Conduct	2	12	5	6		2		1	5		2		35
Drug Charges (all)	9	85	111	68	11	17	14	8	20				343
D.U.I.	17	114	110	92	34	20	36	31	77		1	1	533
Forgery	7	35	62	80	4	3	4	4	3				202
Fraudulent Use of Credit Card	100	73	79	135	17	23	29	12	17				485
Harassment	14	56	48	55	4	14	9	21	14		3	1	239
Identity Theft	13	75	78	98	10	46	31	28	23				402
Kidnapping	1	2	3	5		1	1	1	1			1	16
Manslaughter/Neg. Homicide		1				1			1				3
Menacing	1	35	19	24	7	8	4	6	13			1	118
M.I.P. - Alcohol	1	21	38	47	7	11	24	7	9		6	1	172
Negotiate a Bad Check		12	3	13	1			1	1				31
Offensive Littering		2	5	5	1	4	2	4	1		1		25
Prostitution	2		5	6				1					14
Public / Private Indecency		4	6	1			1						12
Recklessly Endangering		3	4	9	4	1	4		1		2	1	29
Resisting Arrest		2	2	3	1				3				11
Runaway Juveniles	14	61	99	43	14	13	32	21	46			1	344
Sex Crimes (other)	4	1	3	6	2		5	2	2	1			26
Sexual Abuse	2	15	12	10	1	3	1	10	9				63
Sodomy		3		1					1				5
Strangulation		7	3	8	1	1		2	5				27
Unlawful Entry Into Motor Veh	10	31	45	63	6	10	5	5	16		2	4	197
Weapons Violations	2	16	10	10	1	4	4	3	4		1	1	56
Crimes Not Listed Above	11	87	134	126	14	21	24	28	24		3	2	474
Part II Totals:	260	1,116	1,203	1,370	189	275	298	298	430	1	29	23	5,492
Grand Totals	406	1,865	2,422	3,328	364	530	462	523	785	1	43	56	10,785
% of Grand Total:	3.8%	17.3%	22.5%	30.9%	3.4%	4.9%	4.3%	4.8%	7.3%	0.01%	0.4%	0.5%	

2009 Crimes

Reported by District

continued

Crime Types	West	99E	82nd	Clack	Boring	Mtn.	Metro	East	South	Int.	Parks	USFS	Total
Person Crimes	35	248	230	279	39	57	41	92	84	1	9	10	1,125
Property Crimes	295	1,145	1,596	2,534	232	367	273	300	485		18	40	7,285
Behavioral Crimes	76	472	596	515	93	106	148	131	216		16	6	2,375

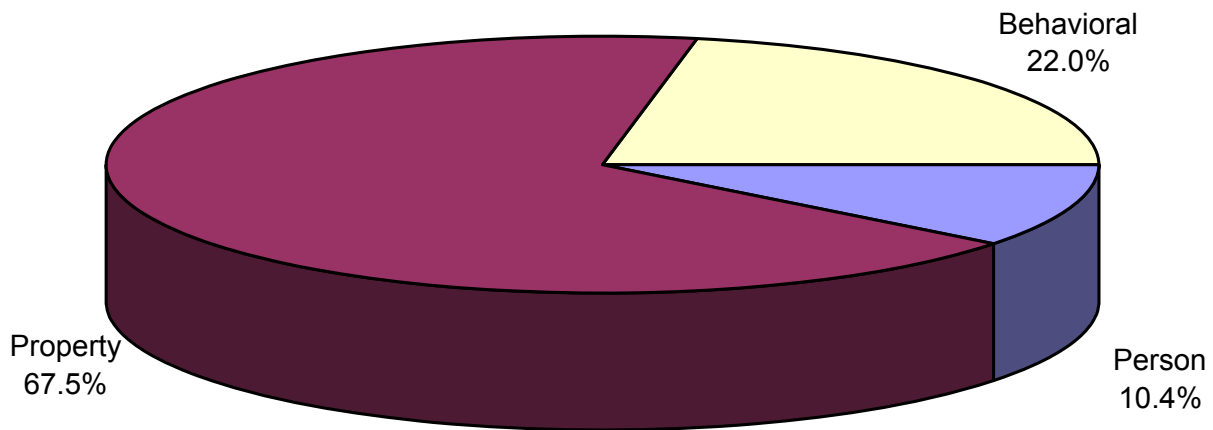
Recovered Vehicles	6	58	79	62	24	24	17	34	35		1	15	355
--------------------	---	----	----	----	----	----	----	----	----	--	---	----	-----

County Top Six	West	99E	82nd	Clack	Boring	Mtn.	Metro	East	South	Int.	Parks	USFS	Total
Theft	104	475	926	1,621	88	148	91	98	194		11	26	3,782
Criminal Mischief	23	217	179	262	27	37	44	43	83		3	7	925
Burglary	28	146	107	124	59	78	52	83	111			2	790
Stolen Vehicle	10	74	114	138	19	22	17	24	36		2	1	457
Identity Theft	13	75	78	98	10	46	31	28	23				402
Assault	10	88	81	99	15	23	14	41	31		4	3	409
Total:	188	1,075	1,485	2,342	218	354	249	317	478	0	20	39	6,765

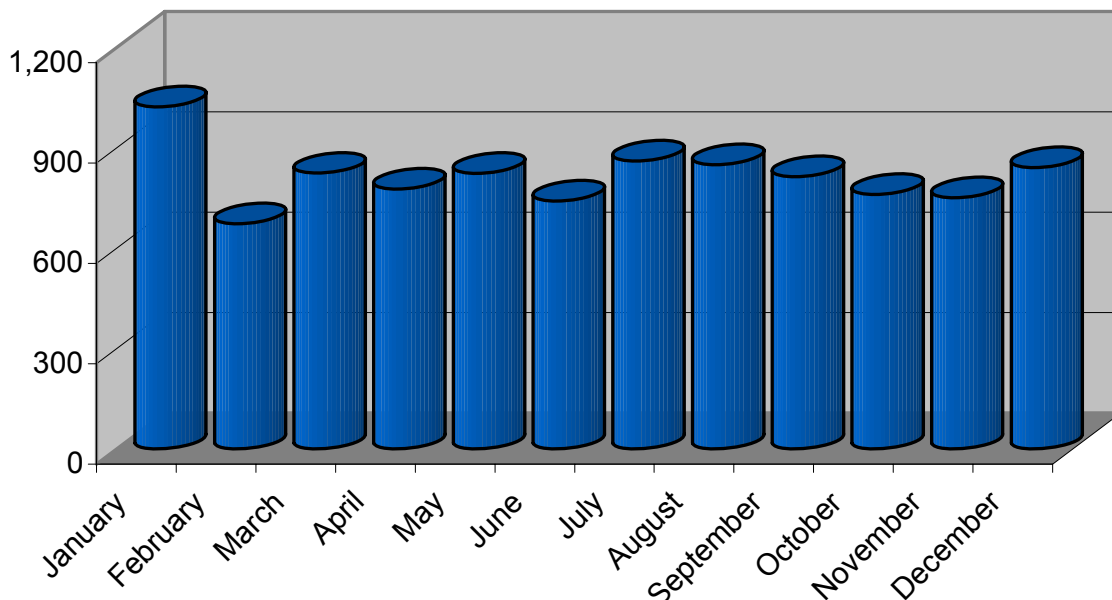
Crimes Against Family	West	99E	82nd	Clack	Boring	Mtn.	Metro	East	South	Int.	Parks	USFS	Total
Criminal Mistreatment	1	2		5	1	2	2	1	3				17
Custodial Interference		1						2					3
Viol. Restraining Order	12	50	3	49	2	6	3	17	13				155
Total:	13	53	3	54	3	8	5	20	16	0	0	0	175

Types of Thefts	West	99E	82nd	Clack	Boring	Mtn.	Metro	East	South	Int.	Parks	USFS	Total
Theft I	28	113	25	224	34	50	32	41	65		6	11	629
Theft II	51	253	64	996	34	68	42	31	73		5	13	1,630
Theft III	14	82	31	336	7	18	8	14	28			1	539
Theft by Deception		7	1	12	6	1	1	2					30
Theft by Extortion		2											2
Theft by Receiving		1		1	2								4
Theft of Lost/Missing		11	2	20	1	4			1			1	40
Theft of Mail	11	5	2	19	4	4	8	10	22				85
Theft of Services		1	3	13		3			5				25
Total:	104	475	128	1,621	88	148	91	98	194	0	11	26	2,984

All Crimes Reported by Type: 2009



All Crimes Reported by Month: 2009



Clackamas County Jail

There were 13,232 people booked into the Clackamas County Jail in 2009. 10,298 (77.8%) of those people were male and 2,934 (22.2%) were female. This includes new bookings during 2009 only, and does not account for people who were already in custody prior to the beginning of the year.

Intakes

	2009	2008	3 Year Avg. 2006/07/08
Total	13,232	13,865	15,162.4
Male	10,298 77.8%	10,921 78.8%	12,035.7 79.4%
Female	2,934 22.2%	2,944 21.2%	3,126.7 20.6%
Monthly Average	1,102.7	1,155.4	1,263.5
Daily Average	36.3	38.0	41.5
Repeat Offenders	67.9%	70.2%	73.0%

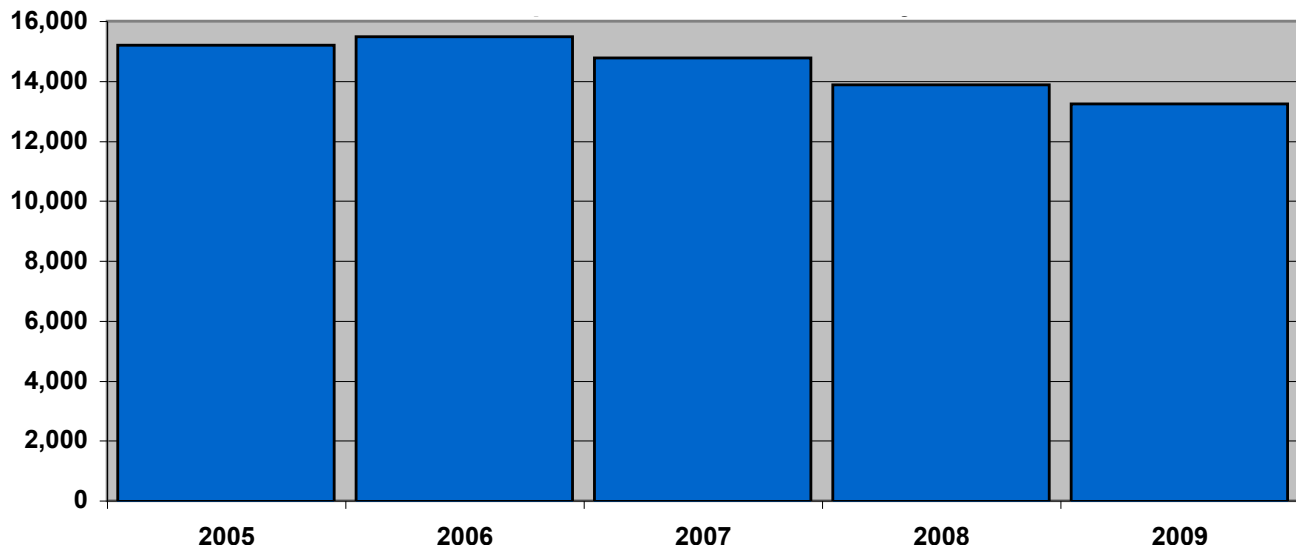
"Repeat Offenders" are people who have previously been booked into the Clackamas County Jail for any reason.

Releases

Type of Release	2009	2008	3 Year Avg. 2006/07/08
Book & Release	147	144	127.7
Cite & Release	2,837	2,659	2,903.3
Forced Release	418	1,921	2,752.3
No Complaint	242	188	198.3
Recognizance	2,369	2,036	3,661.3
Security (bail)	646	509	580.3
Time Served	4,305	4,089	4,017.0
Transport	2,270	2,235	2,119.7
Work Release	72	95	67.0
Other	2	3	5.0
Total:	13,308	13,879	16,431.9

This includes people who were released from jail during 2009, regardless of when they were booked.

Number of People Booked into the Jail by Year



Domestic Violence

The following is a report on the domestic-violence cases reported to the Clackamas County Sheriff's Office during 2009.

The data used for this report was obtained from the Domestic Violence Database maintained by the **Domestic Violence Enhanced Response Team (DVERT)**.

During 2009, the Sheriff's Office investigated 693 incidents of domestic violence involving 832 crimes. The following chart reflects the number of incidents and the number of reported crimes during the last five years. There were also 8 traffic crimes reported during these 693 incidents.



Year	Number of Incidents	Number of Crimes
2005	876	1,180
2006	779	1,061
2007	723	1,005
2008	705	928
2009	693	832

The 693 incidents during 2009 reflect a 1.7% decrease from 2008 and a 5.8% decrease from the prior three-year average of 735.7.

There was at least one child present during 205 (29.6%) of the domestic violence incidents that were reported in 2009.

The chart on the following page lists the crimes that were reported as being "domestic violence related" during 2009. Although some of the crimes listed may not involve violence, they were reported or discovered during a domestic violence incident.

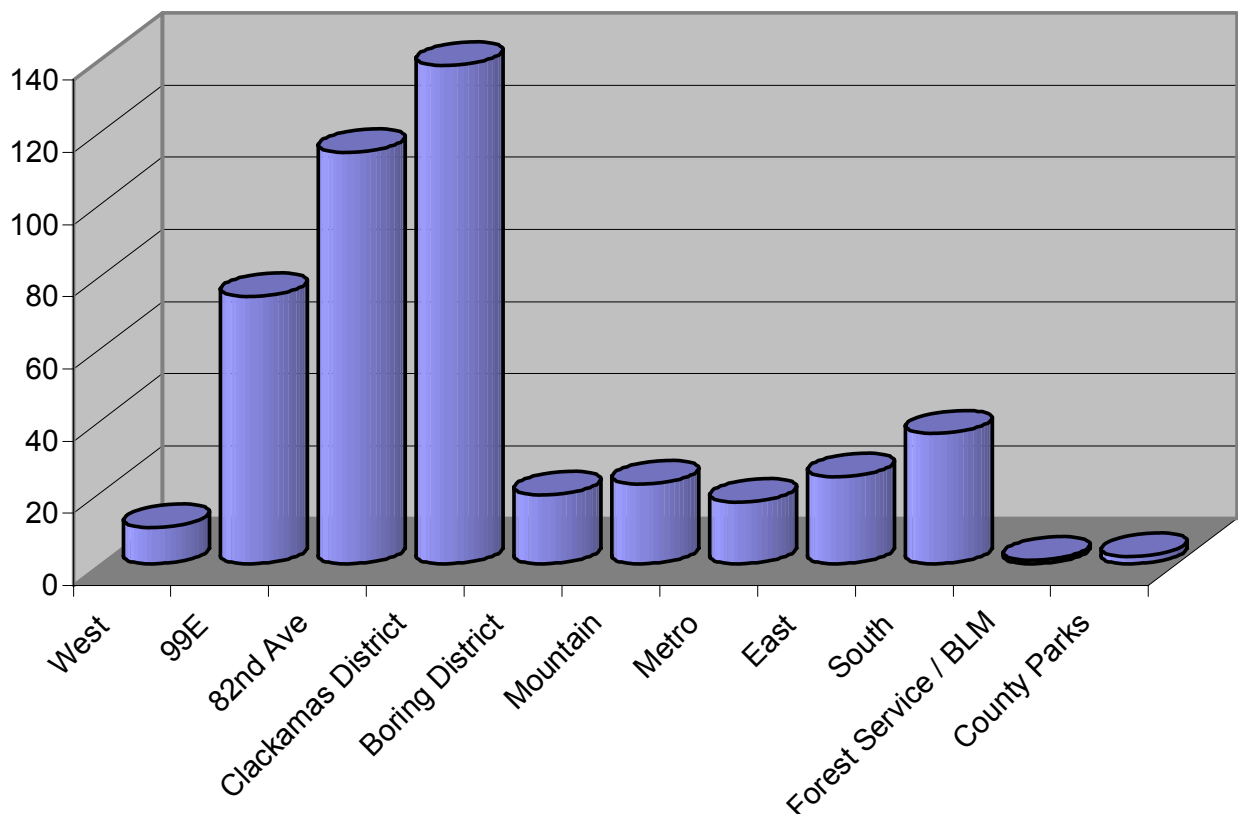
Domestic Violence Related Crimes

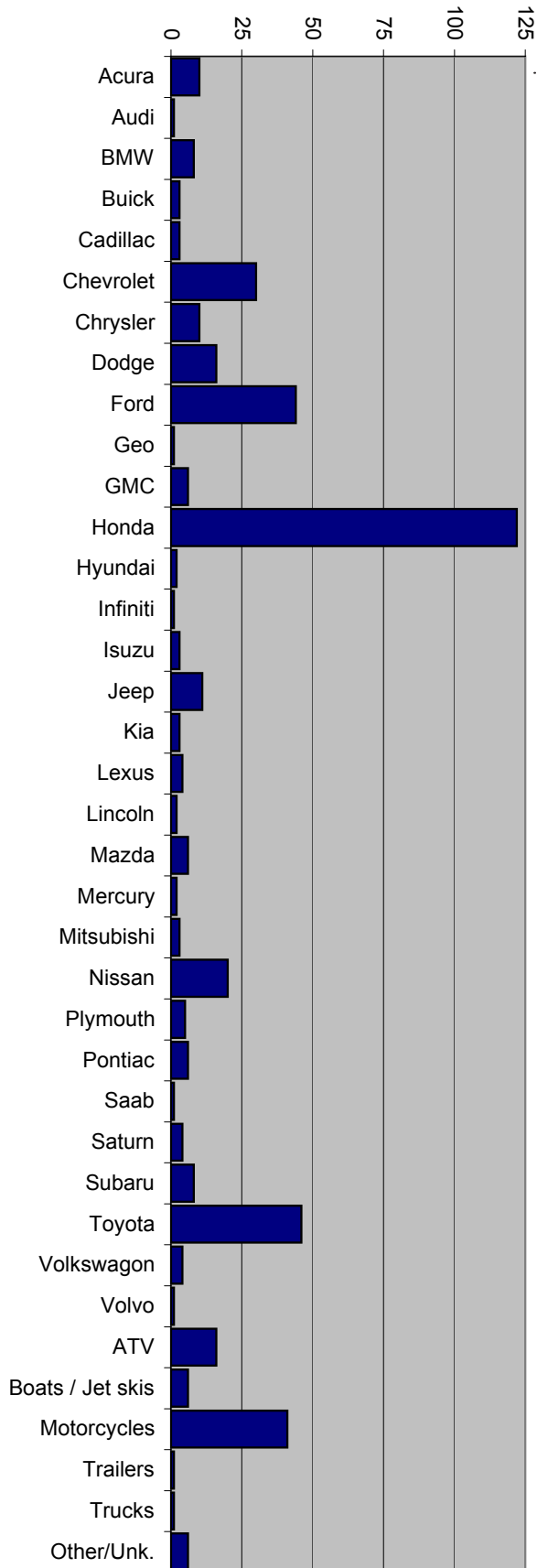
Crime	2009	2008	3 Yr Avg. 2006/07/08
Arson	2	2	2.3
Assault	257	272	289.3
Attempt Murder	2		0.7
Burglary	11	12	14.3
Coercion		6	4.3
Contempt of Court	12	5	3.3
Contribute Sex. Delinq. of Minor		1	0.7
Criminal Mischief	16	27	33.3
Criminal Mistreatment	3		0
Criminal Trespass	4	6	4.0
Cruelty to Animals	1		0.3
Custodial Interference	1	1	1.0
Disorderly Conduct	1	3	3.0
Drug Charges (all)		2	3.7
Endanger Welfare of Minor		1	0.3
Escape			0.7
Failure to Register as Sex Offender		1	1.0
False Information to Police Officer			0.7
Forgery			0.3
Fugitive			0.3
Harassment	87	75	89.0
Identity Theft		1	0.7
Initiating a False Police Report	2	2	1.0
Interfere w/Making Police Report	37	37	43.0
Kidnapping	11	5	9.7
Menacing	80	107	123.7
Murder			0.7
Offensive Littering			0.3
Public / Private Indecency			0.3
Rape	3	4	4.7
Reckless Burning			0.3
Recklessly Endangering	2	5	9.0
Resisting Arrest	1	3	2.7
Robbery		1	1.0
Sex Crimes (Other)	1		0.3
Sexual Abuse	2	2	1.0
Sodomy		1	0.7
Stalking	1	2	2.3
Strangulation	37	51	50.3
Tamper with a Witness		2	1.7
Theft	2	6	5.3
Threat of Harm	8	5	5.3
Unauthorized Use of Vehicle		1	2.3
Unlawful Entry Into Motor Vehicle	1		0.3
Violation of No Contact Order	20	3	1.0
Violation of Probation / Parole	2	1	5.3
Violation of Release Agreement	12	30	23.0
Violation of Restraining Order	185	223	228.3
Violation of Stalking Order	13	7	8.7
Weapons Violations	15	15	12.3
Total	832	928	997.8

Stolen Vehicles by Patrol District

<u>2009</u>		<u>2008</u>		Percentage Change	Prior 3 Year Average
457		508		-10.0%	608.3 -24.9%
District	Grids	2009	Percentage of Total	2008	3 Year Avg.
West	A1 - A3	10	2.2%	6	8.0
99E	B1 - B5	74	16.2%	74	88.3
82nd Ave	B7 - B9	114	24.9%	142	182.7
Clackamas District	B6, B11 - B14	138	30.2%	158	184.7
Boring District	C1 - C3	19	4.2%	24	32.0
Mountain	D1 - D4	22	4.8%	23	20.7
Metro	E2, E2, F1	17	3.7%	12	13.3
East	E3 - E8	24	5.3%	29	31.0
South	F2 - F7	36	7.9%	36	44.0
Forest Service / BLM	U1 -U3	1	0.2%	1	1.7
County Parks	P1 - P29	2	0.4%	3	2.0

*This does not include stolen vehicles reported in the contract cities or stolen vehicle reports taken as a courtesy for other agencies.



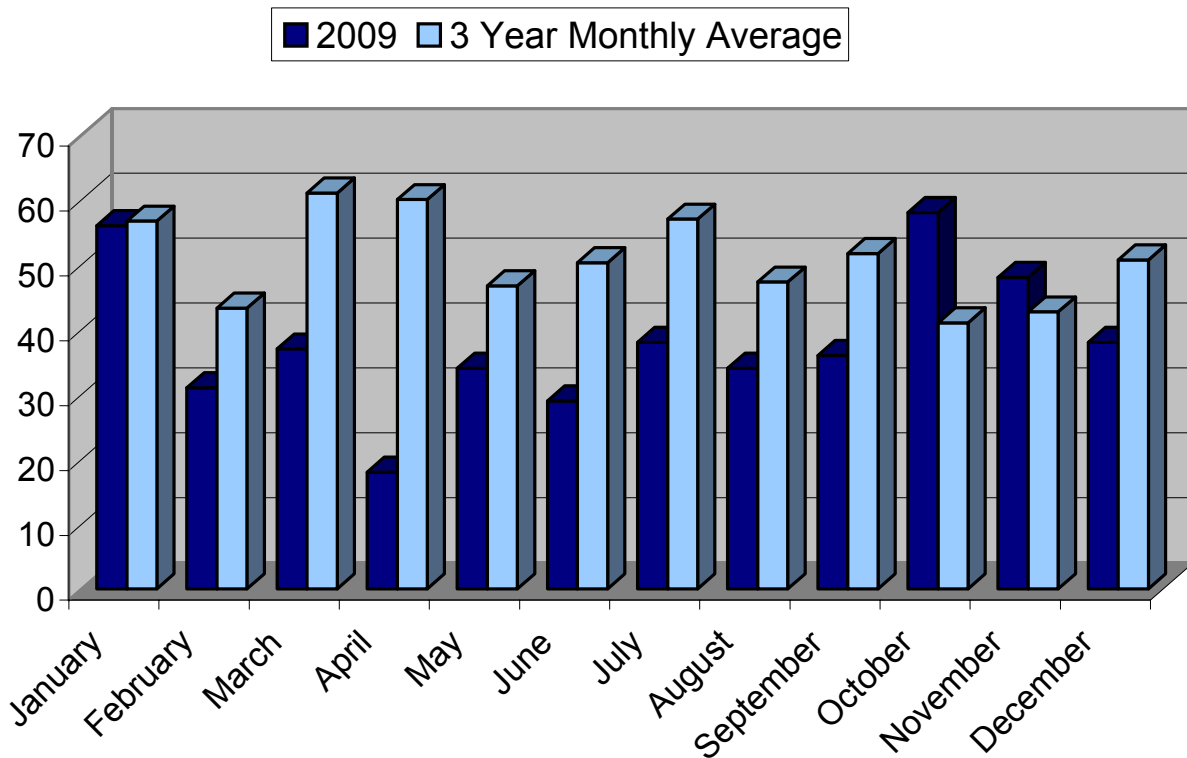


2009 Stolen Vehicles by Make

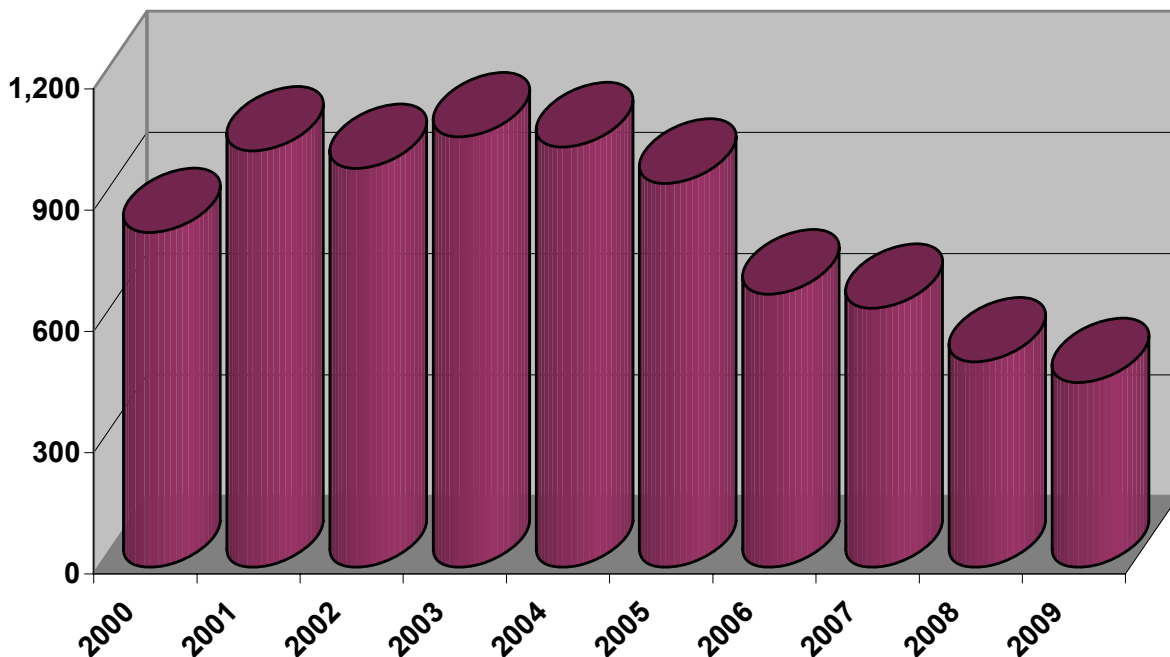
Top 10 Stolen Vehicles

Rank	Make	Model	Number Stolen
1	Honda	Civic	58
2	Honda	Accord	54
3	Ford	Pick-up	22
4	Toyota	Camry	17
5	Toyota	Pick-up	16
6	Dodge	Pick-up	12
7	Chevrolet	Pick-up	11
8	Jeep	Utility	11
9	Nissan	Pick-up	10
10	Acura	Integra	8

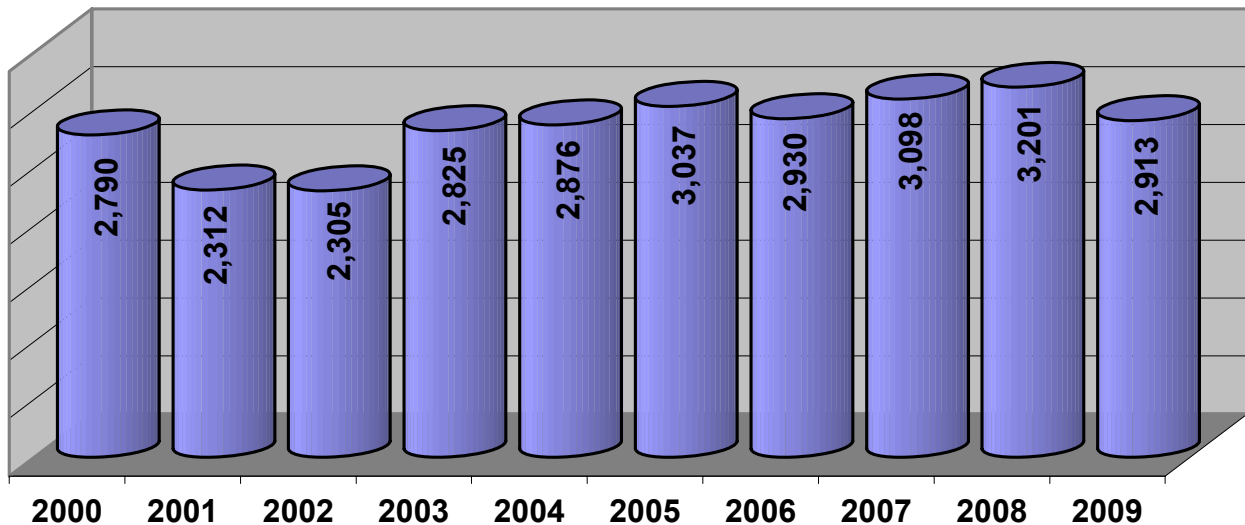
Stolen Vehicles: 2009 by Month



Stolen Vehicles: 10-Year History



Towed Vehicles by Year



Recovered Stolen Vehicles

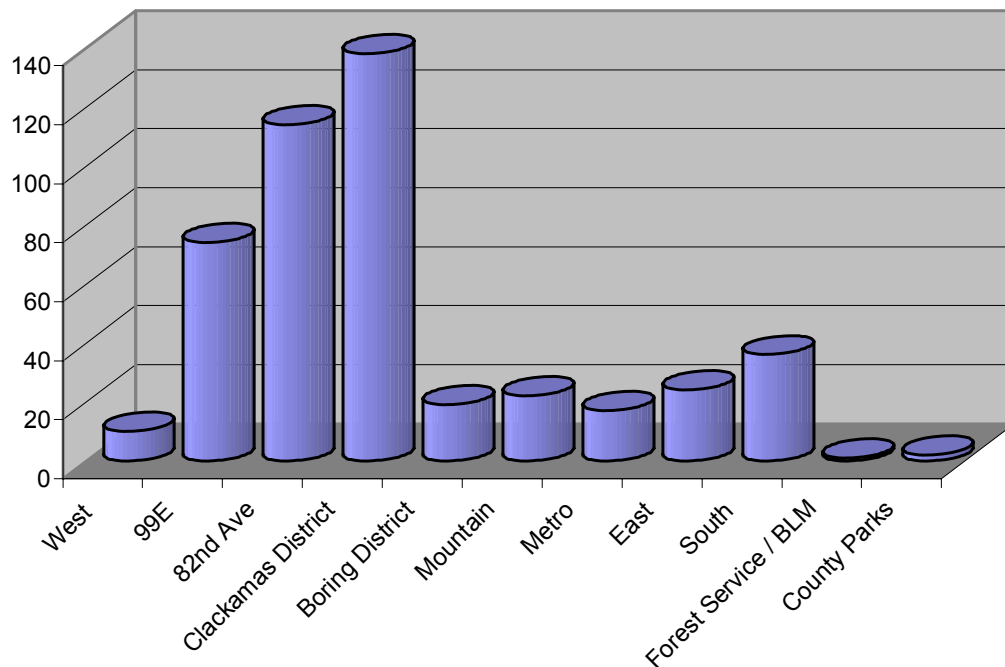
<u>2009</u>	<u>2008</u>	Percentage Change	Prior 3 Year Average		
355	403	-11.9%	471.3	-24.7%	
District	Grids	2009	Percentage of Total	2008	3 Year Avg.
West	A1 - A3	6	1.7%	6	7.0
99E	B1 - B5	58	16.3%	63	63.7
82nd Ave	B7 - B9	79	22.3%	114	129.7
Clackamas District	B6, B11 - B14	62	17.5%	78	92.7
Boring District	C1 - C3	24	6.8%	20	30.3
Mountain	D1 - D4	24	6.8%	24	18.7
Metro	E1, E2, F1	17	4.8%	13	18.0
East	E3 - E8	34	9.6%	48	53.3
South	F2 - F7	35	9.9%	25	38.7
Forest Service	U1 - U3	15	4.2%	10	18.0
County Parks	P1 - P29	1	0.3%	2	1.3

*The Sheriff's Office recovered an additional 105 stolen vehicles in the contract cities and other jurisdictions.

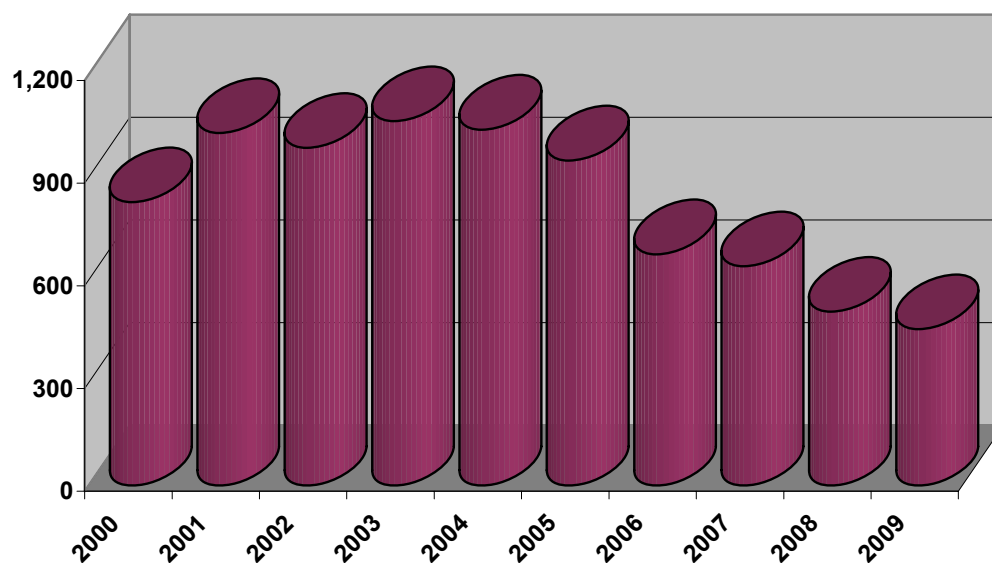
Recovered Stolen Vehicles

This includes all stolen vehicles recovered by the Clackamas County Sheriff's Office. Some of the vehicles were originally reported stolen to the Clackamas County Sheriff's Office and some were originally reported stolen to other police agencies.

2009 Recovered Stolen Vehicles by Patrol District



10-Year Recovered Stolen Vehicle History



CCSO Calls for Service

Type of Call	3 Year Average 2006/07/08	Number of Calls 2009	2009 Change From 3 Year Average	2009 Percentage Change
Abandoned Auto	573.0	308	-265.0	-46.2%
Accident, Other (not traffic)	2.3	3	0.7	28.6%
Airplane Crash	2.0	1	-1.0	-50.0%
Alarm, Audible	3,493.3	3,133	-360.3	-10.3%
Alarm, Other	25.7	37	11.3	44.2%
Alarm, Panic	186.7	168	-18.7	-10.0%
Alarm, Robbery	116.0	111	-5.0	-4.3%
Alarm, Silent	307.7	232	-75.7	-24.6%
Animal Complaint	967.7	900	-67.7	-7.0%
Arson	32.0	44	12.0	37.5%
Assault	755.7	661	-94.7	-12.5%
Assist Agency	1,026.7	1,480	453.3	44.2%
Assist Fire	485.0	539	54.0	11.1%
Assist / Cover Officer	121.7	106	-15.7	-12.9%
Assist Public	2,848.3	4,339	1,490.7	52.3%
Attempt Contact	79.7	90	10.3	13.0%
Attempt to Locate	100.3	88	-12.3	-12.3%
Bomb Threat	11.3	5	-6.3	-55.9%
Bombing	1.7	0	-1.7	-100.0%
Burglary, Commercial	207.7	193	-14.7	-7.1%
Burglary, Residential	859.0	945	86.0	10.0%
Criminal Mischief	1,542.3	1,381	-161.3	-10.5%
Death Investigation	168.3	196	27.7	16.4%
Disturbance	1,345.0	1,132	-213.0	-15.8%
Domestic Disturbance	2,401.7	2,319	-82.7	-3.4%
Escape / Walkway	3.3	4	0.7	20.0%
Extra Patrol Requested	183.7	249	65.3	35.6%
Fireworks	41.7	38	-3.7	-8.8%
Fraud	1,321.7	1,282	-39.7	-3.0%
Harassment	1,159.7	1,252	92.3	8.0%
Hazard	1,286.0	1,069	-217.0	-16.9%
Homicide	1.0	2	1.0	100.0%
Incomplete 911 Call	1,043.0	862	-181.0	-17.4%
Juvenile Abuse / Neglect	324.3	272	-52.3	-16.1%
Juvenile Custody Problem	245.3	302	56.7	23.1%
Juvenile Disturbance	50.7	48	-2.7	-5.3%
Juvenile Missing (not runaway)	80.7	73	-7.7	-9.5%
Juvenile Problem	347.7	317	-30.7	-8.8%
K9 Incident	27.3	35	7.7	28.0%
Kidnap	8.0	5	-3.0	-37.5%
Littering	83.3	69	-14.3	-17.2%

CCSO Calls for Service

continued

Type of Call	3 Year Average 2006/07/08	Number of Calls 2009	2009 Change From 3 Year Average	2009 Percentage Change
Marine Patrol	119.0	141	22.0	18.5%
Marine Rescue	29.3	36	6.7	22.7%
Menacing	109.3	98	-11.3	-10.4%
Mental	186.7	286	99.3	53.2%
Minor In Possession of Alcohol	207.3	147	-60.3	-29.1%
Missing Person	247.7	222	-25.7	-10.4%
Motorist Assist	956.0	1,036	80.0	8.4%
Noise Complaint	1,069.3	1,029	-40.3	-3.8%
Open Door / Window	78.7	89	10.3	13.1%
Ordinance Violation	67.3	218	150.7	223.8%
Parking Complaint	939.0	1,097	158.0	16.8%
Promiscuous Shooting	144.7	120	-24.7	-17.1%
Property Lost / Found / Recovered	672.3	627	-45.3	-6.7%
Provide Information	2,319.3	1,440	-879.3	-37.9%
Prowler	240.3	189	-51.3	-21.4%
Rape / Sexual Assault	73.3	88	14.7	20.0%
Recovered Stolen Vehicle	361.3	309	-52.3	-14.5%
Robbery, Armed	41.3	64	22.7	54.8%
Robbery, Strongarm	67.3	106	38.7	57.4%
Runaway Juvenile	760.3	721	-39.3	-5.2%
Search & Rescue	77.7	129	51.3	66.1%
Sex Crime - Expose	55.3	59	3.7	6.6%
Sexual Molest of Juvenile	109.3	124	14.7	13.4%
Shooting	17.3	13	-4.3	-25.0%
Stolen Vehicle / Unauthorized Use	816.0	611	-205.0	-25.1%
Suicide Attempt / Threat	494.3	581	86.7	17.5%
Suspicious Circumstances	1,515.7	1,196	-319.7	-21.1%
Suspicious Person	1,565.0	1,592	27.0	1.7%
Suspicious Vehicle	1,337.0	1,156	-181.0	-13.5%
Theft / Shoplift	5,095.0	4,498	-597.0	-11.7%
Threat	750.3	705	-45.3	-6.0%
Traffic Accident, Injury	301.7	340	38.3	12.7%
Traffic Accident, Non-Injury	1,810.7	1,689	-121.7	-6.7%
Traffic Accident, Unknown Injury	714.0	618	-96.0	-13.4%
Traffic Complaint	1,314.0	1,348	34.0	2.6%
Trespassing	559.7	699	139.3	24.9%
Unknown Type Call	406.3	485	78.7	19.4%
Unwanted	683.0	675	-8.0	-1.2%
Vice Complaint, Drugs	652.3	826	173.7	26.6%
Vice Complaint, Prostitution	15.3	18	2.7	17.4%
Violation of Restraining Order	302.3	290	-12.3	-4.1%
Welfare Check	1,054.0	1,064	10.0	0.9%
Total:	52,204.3	51,069	-1,135.3	-2.2%

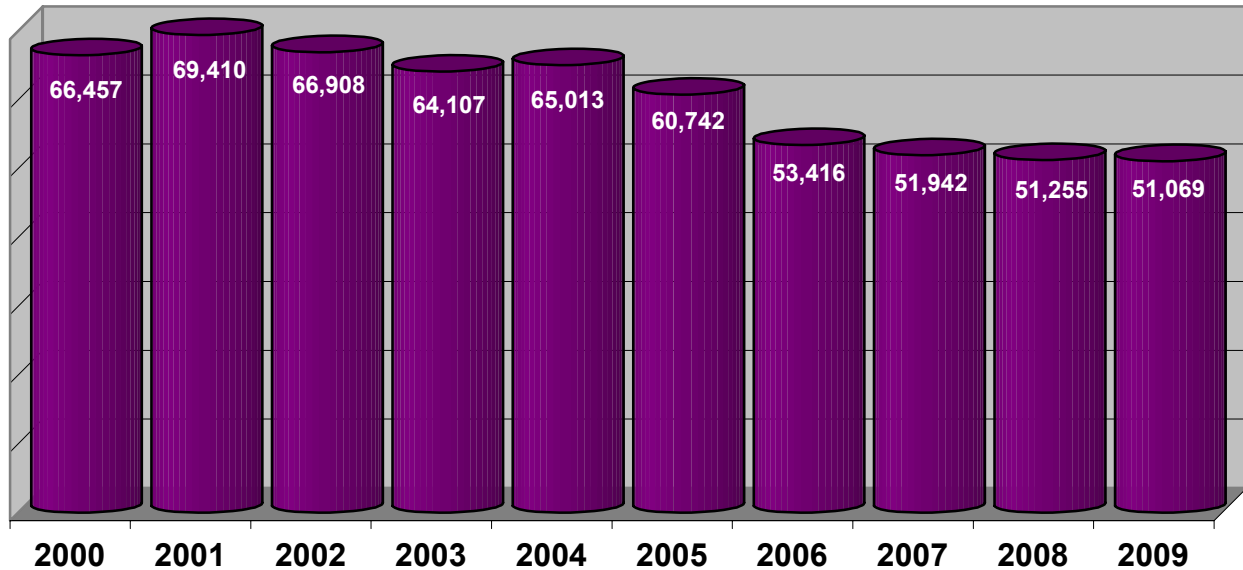
CCSO Calls for Service

continued

Type of Call	3 Year Average 2006/07/08	Number of Calls 2009	2009 Change From 3 Year Average	2009 Percentage Change
Person Crimes Calls	3,969.0	3,940	-29.0	-0.7%
Percentage of Total	7.6%	7.7%		
Property Crimes Calls	10,606.3	9,475	-1,131.3	-10.7%
Percentage of Total	20.3%	18.6%		
Behavioral Crimes Calls	11,783.7	11,387	-396.7	-3.4%
Percentage of Total	22.6%	22.3%		
Miscellaneous Call Types	25,845.3	26,267	421.7	1.6%
Percentage of Total	49.5%	51.4%		
Alarms	4,129.3	3,681	-448.3	-10.9%
Percentage of Total	7.9%	7.2%		
Disturbance Type Calls	6,807.3	6,475	-332.3	-4.9%
Percentage of Total	13.0%	12.7%		
Suspicious Activity Calls	4,658.0	3,015	-1,643.0	-35.3%
Percentage of Total	8.9%	5.9%		
Nuisance Type Calls	1,912.0	1,564	-348.0	-18.2%
Percentage of Total	3.7%	3.1%		

Other Activity Type of Call	3 Year Average 2006/07/08	Number of Calls 2009	2009 Change From 3 Year Average	2009 Percentage Change
Boat Stop	181.7	81	-100.7	-55.4%
Civil	12,349.3	12,519	169.7	1.4%
Detail	2,839.7	2,715	-124.7	-4.4%
Follow-Up Contact	6,893.0	8,011	1,118.0	16.2%
Foot Patrol	183.0	124	-59.0	-32.2%
Home Visit	3,477.7	3,727	249.3	7.2%
Premise Check	1,088.0	2,024	936.0	86.0%
Pursuit	33.0	38	5.0	15.2%
Subject Stop	2,414.3	3,174	759.7	31.5%
Suspect Contact	692.7	681	-11.7	-1.7%
Suspicious Vehicle Stop	2,439.7	2,560	120.3	4.9%
Traffic Stop	20,041.0	24,700	4,659.0	23.2%
Transport	441.3	491	49.7	11.3%
Warrant Service	1,522.7	1,276	-246.7	-16.2%
Total:	54,597.0	62,121	7,524.0	13.8%

Calls for Service: Yearly Totals



Property Room: 15-Year History

Year	Number of Cases	Items Received	Items Released/ Destroyed
1995	4,977	12,724	9,741
1996	5,719	17,007	10,770
1997	6,568	17,816	14,692
1998	6,660	20,461	16,861
1999	6,997	19,107	14,549
2000	7,172	21,594	10,792
2001	7,144	21,733	14,752
2002	6,509	21,707	13,665
2003	5,790	19,915	21,228
2004	6,607	17,597	21,791
2005	6,155	18,460	18,014
2006	5,868	20,051	21,579
2007	5,794	16,430	22,100
2008	6,761	15,851	15,930
2009	7,039	16,847	13,416

Clackamas County Inter-agency Task Force

(CCITF)



In 2002, Clackamas County was designated as a High Intensity Drug Trafficking Area (HIDTA). The **Clackamas County Inter-agency Task Force (CCITF)** was formed in September 2006. In October 2007, CCITF began its first year as a HIDTA-funded task force.

Mission Statement

The mission of CCITF is to target individuals involved in trafficking of controlled substances and criminal activity related to drug trafficking.

Participating Agencies

- Clackamas County Sheriff's Office
- Clackamas County Community Corrections
- Clackamas County District Attorney
- Canby Police Department
- Gladstone Police Department
- Molalla Police Department
- Oregon City Police Department
- Oregon National Guard
- Oregon State Police
- Sandy Police Department
- West Linn Police Department
- Internal Revenue Service

CCITF also works with local community organizations and other government agencies (including Code Enforcement) to step up the pressure on offenders through neighborhood outreach and the application of nuisance laws.

CCITF Stats for 2009:

- 84 Task force arrests
- 19 Children referred to DHS
- 26 Search warrants obtained
- 136 Investigations conducted
- 15 Pen registers
- 9 Wiretaps

For more information on the CCITF, visit
www.clackamas.us/sheriff/itf



INTERCEPT

Protecting Our Children from On-line Predators

The **Inter-agency Child Exploitation Prevention Team (INTERCEPT)** was established in August 2007 by the Sheriffs of Clackamas, Multnomah and Washington Counties.

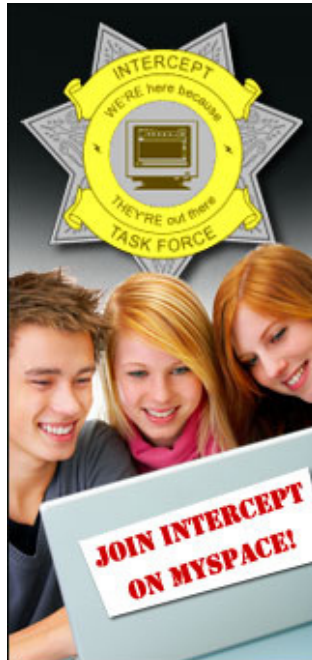
INTERCEPT is staffed with one Detective each from the Clackamas, Multnomah and Washington County Sheriff's Offices, a Sergeant, a District Attorney, one office staffer, two consulting Oregon Department of Justice (DOJ) investigators and a consulting Immigration and Customs Enforcement (ICE) investigator. Two computer forensic examiners are paid for by a COPS grant.

Mission Statement

The mission of INTERCEPT is to investigate violation of state and federal laws, with an emphasis on crimes against children and to prosecute those violations in state and federal court. INTERCEPT investigations will include, but are not limited to, violations of child sex crimes, child pornography, child exploitation and the use of computers to promote these crimes.

More than 30 million children ages 17 and younger, are online in the United States.

According to a study conducted by the National Center for Missing & Exploited Children in partnership with Cox Communication:



- 61% of children ages 13-17 have a personal profile on a social networking site such as MySpace or Facebook. Half of them have posted pictures of themselves online.

- 71% of teens report receiving online messages from someone they do not know, and 45% were solicited for personal information. Only 18% said they would tell a parent about receiving a message from someone they do not know.

- 40% said that when they receive a message from someone they do not know, they usually reply and begin a conversation with them.

- 14% have met someone in person who they first met online, and 30% have considered doing so.

- 33% reported that their parents know very little or nothing about what they do on the internet.

INTERCEPT info online

For more information on INTERCEPT and tips on keeping your children safe online, download the INTERCEPT press kit at www.clackamas.us/docs/sheriff/intercept.pdf or visit www.clackamas.us/sheriff/info.jsp?name=INTERCEPTmain.htm

You can also visit INTERCEPT's MySpace page at www.myspace.com/intercept_oregon

INTERCEPT Activity	2009	Total Since Inception of INTERCEPT
Investigations conducted	148	302
Search warrants served	56	112
Consent searches initiated	10	34
Computers seized	92	193
Pornographic images of children recovered	52,856	73,206
Indictments	25	33
Cases referred for Federal prosecution	8	16
People who attended Internet Safety Training	1,127	1,591

S.W.A.T.



The Clackamas County Sheriff's Office Special Weapons and Tactics team (SWAT) responded to 19 incidents in 2009. The SWAT team responded to 9 calls in 2008 and an average of 12.0 in the previous three years of 2006, 2007 and 2008.

Eight of the suspects surrendered, 8 were subdued by SWAT members, 1 was shot and killed, and 1 was not at the scene. The other call was determined to be non-criminal and no arrests were made.

The following chart shows how many SWAT incidents occurred in each patrol district in 2009:

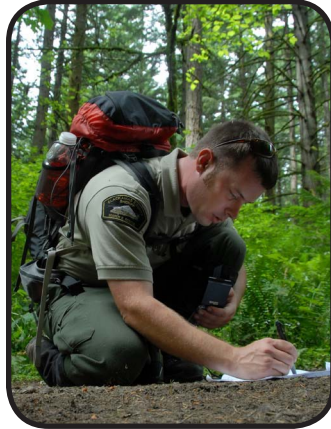
District	Number of Incidents	Percentage of Incidents
West		0%
Wilsonville		0%
99E	2	10.5%
82nd Ave	1	5.3%
Clackamas		0%
Happy Valley		0%
Boring		0%
Damascus	1	5.3%
Mountain	1	5.3%
Metro	1	5.3%
East	2	10.5%
Estacada		0%
South	2	10.5%
Forest Service / BLM land	1	5.3%
Outside Agency Jurisdiction	8	42.1%

The following chart shows the initial situation classification for each SWAT call-out:

Type of Situation	Number of Incidents	Percentage of Incidents
Arrest Warrant	2	10.5%
Murder / Attempt Murder	2	10.5%
Domestic Violence	5	26.3%
Hostage Situation	5	26.3%
Search Warrant (drugs)	1	5.3%
Search Warrant (other)	5	26.3%
Suicidal Subject	2	10.5%
Other Type Incident	2	10.5%

** This total may be higher than the total number of incidents because some incidents may have involved more than one factor.*

Search & Rescue



The data for this report was obtained from the 2007, 2008 and 2009 Oregon Emergency Management Annual Reports.

A total of 908 search-and-rescue missions were reported to Oregon Emergency Management throughout the state in 2009. The Clackamas County Sheriff's Office's Search and Rescue Unit (SAR) responded to 102 of those missions. This was the second-highest number of missions for any county in Oregon. The highest was Lane County, with 105 missions.

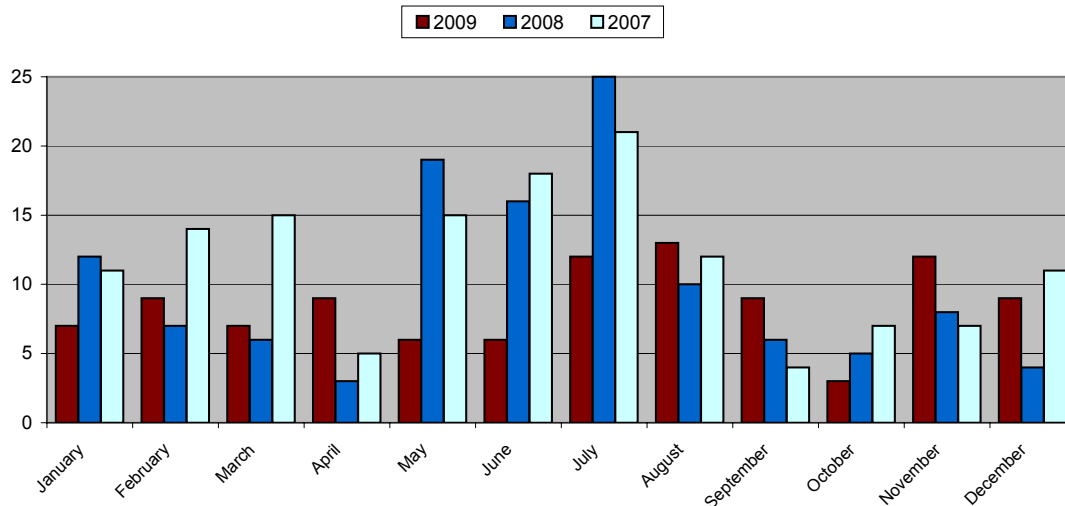
Clackamas County Mission Type by Year

	2009	2008	2007
Aviation	1	4	1
Beacon	1	10	7
Body Recovery (land)	1	1	1
Body Recovery (water)			4
Evidence (land)	1	1	2
Evidence (water)		1	1
Missing Person (land)	39	40	43
Missing Person (water)	2	6	5
Rescue (land)	28	27	27
Rescue (water)	21	15	19
Other	8	16	30

Hours Worked During 2009

	Clackamas County	State Total
Paid	4,127	23,594
Volunteer	4,764	126,288

2007 - 2009 Clackamas County Search and Rescue Missions by Month



Traffic

The Clackamas County Sheriff's Office investigated 1,293 traffic accidents in 2009. There were 11 people killed in 11 separate accidents. There were also 45 "courtesy" reports written for accidents that happened in other jurisdictions.

The top two causes for accidents in 2009 were careless driving (209) and excessive speed (151). Alcohol was involved in 142 (11.0%) of the accidents. Five of the fatal accidents were alcohol-related.



Total Accidents Reported	1,293	
Total Injury Accidents	425	32.9%
Possible	277	
Minor	117	
Serious	20	
Fatal	11	
Alcohol Related	142	11.0%
Hit & Run	577	44.6%

The following chart shows the top 10 intersections, based on the number of accidents reported to the Clackamas County Sheriff's Office at those intersections during 2009:

Intersection	Number of Accidents	Type of Injury			
		Serious	Minor	Possible	None
122 nd Ave/Sunnyside Rd	12			5	7
Johnson Creek Blvd/82 nd Ave	11			2	9
82 nd Dr/Hwy 212	8		1	3	4
Hwy 212/Foster Rd	7		1	4	2
Redland Rd/Ferguson Rd	6		3	1	2
Sunnybrook Blvd/97 th Ave	6			3	3
Oatfield Rd/Roethe Rd	6			3	3
Borland Rd/Stafford Rd	6			3	3
Monterey Ave/90 th Ave	6			2	4
8 intersections tied with 5 accidents each	5				

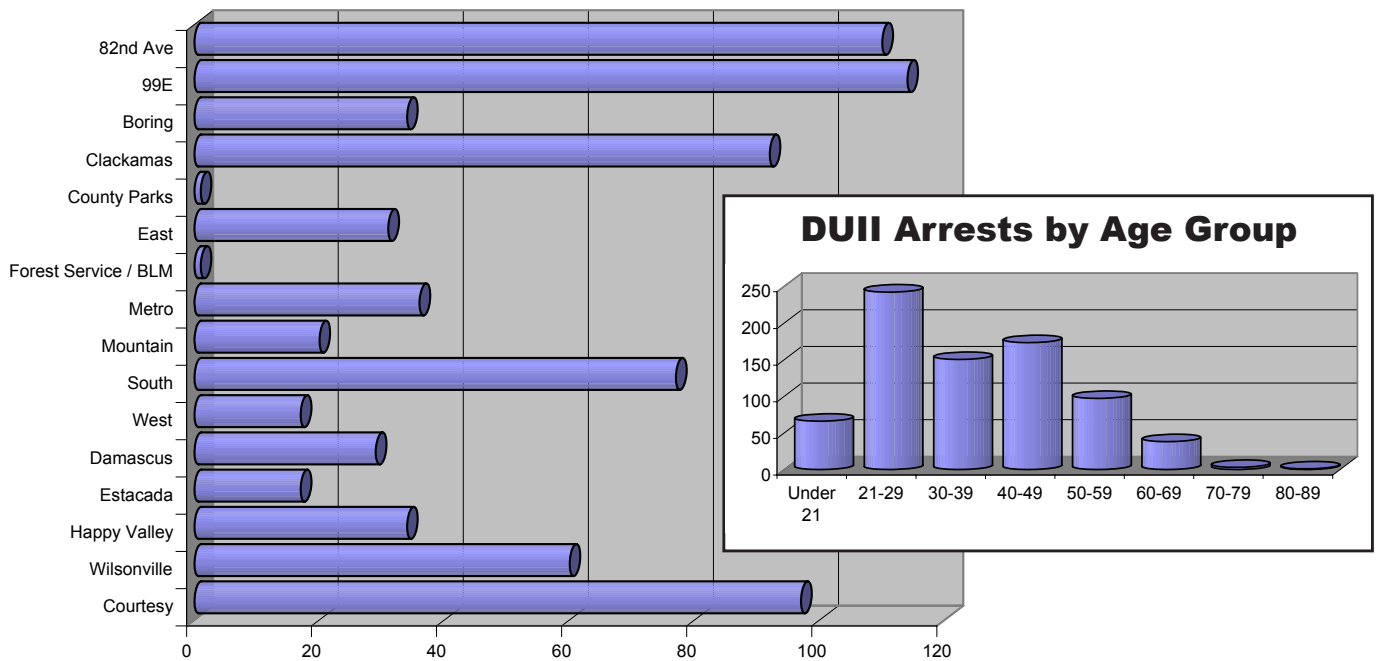
- The Sheriff's Office issued 7,194 traffic citations with 9,399 charges in 2009. The top two charges were speed related violations (2,028) and driving while suspended/revoked (1,485). The Sheriff's Office issued an additional 1,571 citations with 2,012 charges in other jurisdictions.

- The Sheriff's Office also performed 561 commercial vehicle inspections in 2009.

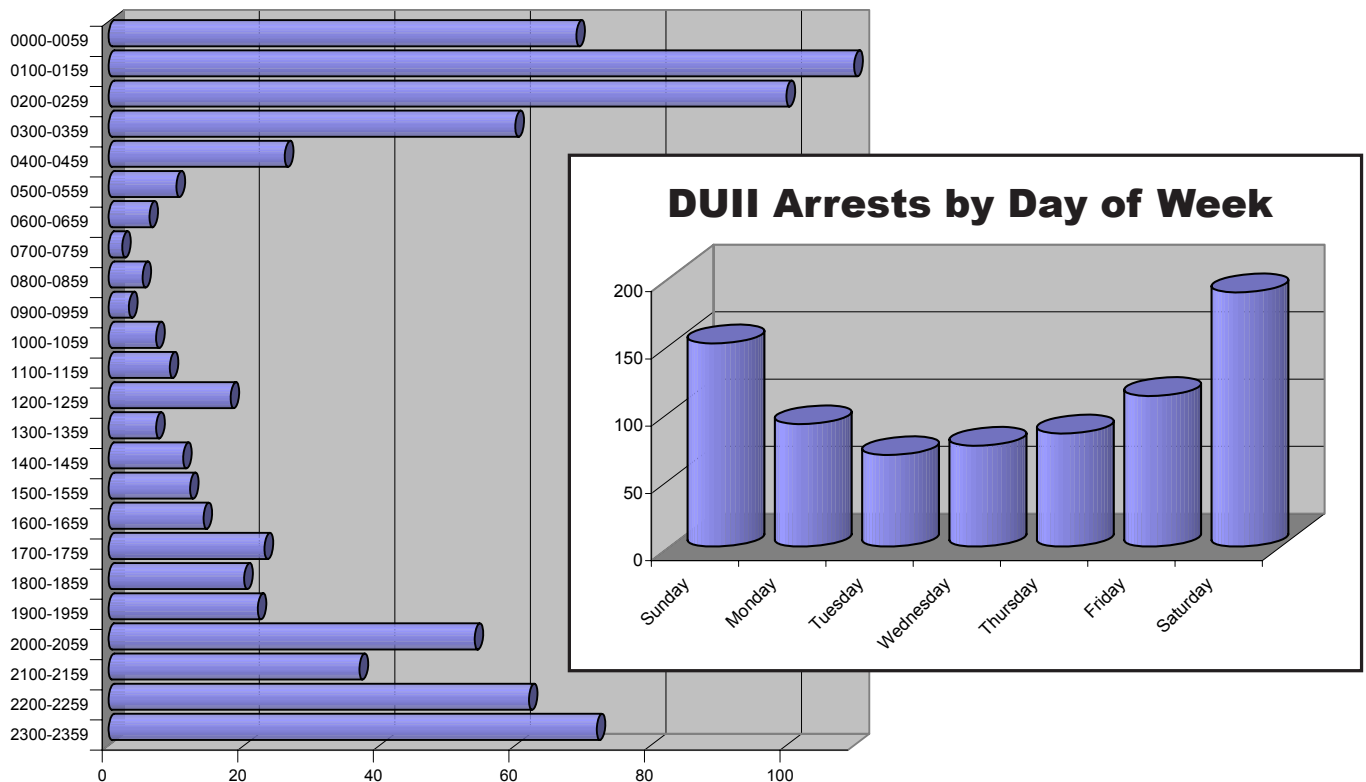
- The Sheriff's Office arrested 770 people for Driving Under the Influence of Intoxicants (DUI) in 2009. Of the 770 people arrested for DUI, 199 (25.8%) were female and 571 (74.2%) were male. Sixty six were under 21 years old, with the youngest being 16 years old.

- This includes all DUI arrests made by the Sheriff's Office, including arrests made in contract cities and in other jurisdictions.

DUI Arrests by Patrol District



DUI Arrests by Time of Day



Death Investigations

Cause of Death	2009		2008		Prior 3 Year Average	
Accident (Auto)	12	4.1%	10	3.5%	13.0	4.6%
Accident (Industrial)		0%	2	0.7%	1.3	0.5%
Accident (Other)	4	1.4%	3	1.0%	3.0	1.1%
Accidental Shooting		0%		0%		0%
Aircraft Crash		0%	2	0.7%	1	0.5%
Asphyxiation		0%		0%	0	0%
Choking		0%	1	0.3%	0.3	0.1%
Crushed		0%		0%		0%
Drowning	2	0.7%	5	1.7%	5.7	2.0%
Drug Overdose	7	2.4%	4	1.4%	4.7	1.7%
Electrocution		0%		0%		0%
Falling Object		0%		0%		0%
Fire		0%		0%	0.3	0.1%
Infant Death	1	0.3%		0%	0.7	0.2%
Manslaughter	1	0.3%		0%	0.3	0.1%
Murder	3	1.0%	4	1.4%	4.0	1.4%
Murder / Suicide		0%		0%	0.3	0.1%
Natural Causes	212	72.1%	207	72.1%	196.7	70.2%
Negligent Homicide		0%		0%		0%
Shot By Police	2	0.7%	1	0.3%	1.3	0.5%
Shot During Crime		0%		0%		0%
S.I.D.S Death	1	0.3%		0%		0%
Subject Fell	2	0.7%		0%	0.7	0.2%
Suffocation		0%		0%		0%
Suicide	27	9.2%	27	9.4%	22.7	8.1%
Suspicious Death		0%		0%		0%
Unknown / Other	20	6.8%	21	7.3%	24.0	8.6%
Total:	294		287		280.4	

2009 Sheriff's Office Awards

The Clackamas County Sheriff's Office honored deputies and citizen heroes who went above and beyond to serve their community and save lives during CCSO's 28th Annual Awards Ceremony -- held Friday, April 2, 2010 in the Public Safety Training Center.



The event -- emceed by Undersheriff Matt Ellington -- also honored the service of recently passed former Sheriff Bill Brooks (for more information, see page 4) and saluted retiring Sheriff's Office employees, who had served the Sheriff's Office for a combined total of 102 years.

Below is a list of the evening's winners.

Public Service Awards

John Addington
Jeff Van Winkle
Chris Madlem

Department Commendations

Detective Scott Eggleston
Deputy Gary Bergerson
Deputy Hilary Robinson
Deputy Jim Keen
Deputy Steve Woolcock
Deputy A.J. Ajir

Meritorious Service Award

Corrections Counselor John Fisher

Life Saving Awards

Sgt. Tim Beard
Deputy Justin Brummett
Corrections Deputy Tom Kettle
Corrections Deputy Kristine Gerber
Sgt. Adam Phillips
Deputy Scott McBride
Deputy A.J. Ajir

Department Unit Commendations

Clackamas County Inter-agency
Task Force (CCITF)
Special Investigations Unit (SIU)

- Lt. Dixon Andrews
- Lt. Jeff Davis
- Sgt. Bill Erickson
- Deputy Doug Burgess
- Deputy Geoff Erichsen
- Deputy Marcus Wold
- Deputy Karen Moss
- Sheriff's Administrative Specialist Tracey Rhoades
- Det. Guy Nelson (Oregon State Police)
- Det. Dave Plummer (Gladstone Police)
- Det. K.T. Taylor (Sandy Police)
- Officer Nick Ennis (Oregon City Police)

Community Service Officers

- Noel Adams
- Sue Davis
- Julie Fanger
- Jennifer Franco
- Kim Fuller
- Heidi Johnson
- Sara McClurg
- Rose Parkhill
- Dan Rash
- Tish Scott
- Tom Solano



Photos courtesy PATRICK SHERMAN/CLACKAMAS REVIEW and JULIE BLISS

Citizens Informational Sheriff's Academy (CISA)

The Sheriff's Office hosts an annual **Citizens Informational Academy** that provides opportunities for community members to receive a hands-on education about the functions of the Sheriff's Office.

The Academy's goal is to foster positive relationships between the community and the Sheriff's Office. Graduates gain an understanding of Sheriff's Office operations and develop an awareness and appreciation of the various

challenges and decisions faced daily by our deputies.

Even though citizens attending the Academy are given information in numerous police-related subjects, the graduates are not prepared for nor expected to conduct any police services.

More information and application forms can be found at our Web site, **www.clackamas.us/sheriff** (Click on "Citizen Academy") or by calling (503) 655-8819.

For More Information

For more information about the Clackamas County Sheriff's Office
and the material in this report, please contact:

Clackamas County Sheriff's Office

Crime Analysis Unit

2223 Kaen Rd
Oregon City, OR 97045

(503) 655-8823

You can also visit the
Clackamas County Sheriff's Office Web site at
www.clackamas.us/sheriff