

MEMORANDUM

TO: Clackamas County Board of County Commissioners
FROM: Adam Brown, Deputy Director, Health, Housing & Human Services and Vahid Brown, Deputy Director, Housing & Community Development Division
RE: Supportive Housing Services Carryover Update
DATE: August 15, 2023

REQUEST: Staff are seeking to:

- 1) Update the Board on the anticipated carryover balance of Supportive Housing Services (SHS) Measure funds;
- 2) Update the Board on plans to proceed with solicitations for construction of the Clackamas Village and allocation of funding for Navigation/Resource Centers.

BACKGROUND:

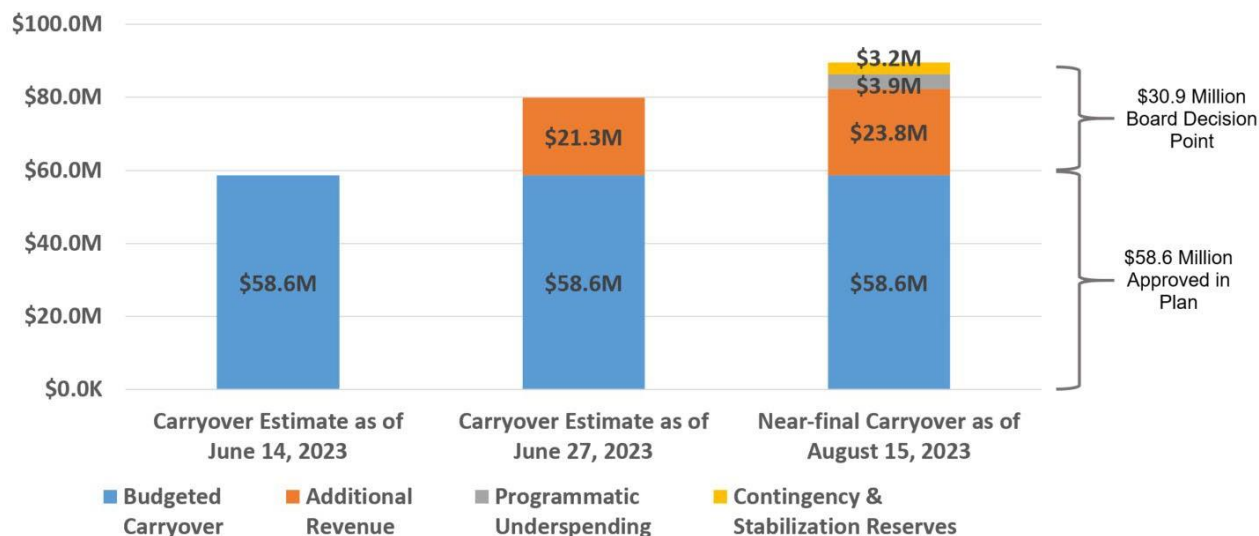
Carryover Balance Update

At a Policy Session on June 14, 2023, staff presented the Board of County Commissioners with a plan for one-time and limited-term uses of the anticipated carryover balance of SHS funding going into Fiscal Year 2023-24. The Board unanimously approved of the plan to allocate the anticipated \$58.6 million across five priority areas, including \$16.8 million for Capital Needs. Staff committed to returning to the Board in the near future with recommendations for making Capital Needs investments in alignment with projects already in development, Board priorities, and system needs.

During the Policy Session, staff apprised the Board of a good chance that, given the pace of current year SHS revenue collections for FY 2022-23, and based on preliminary information from Metro about expected continued pace of those collections, the total revenue collected would exceed Metro's December forecast amount. Staff further apprised the Board that an increase to the collection amount would mean an increase in the \$58.6 million carryover balance and an opportunity for the Board to expand on and/or make deeper investments in the priority areas outlined in the plan. On June 27, 2023, staff presented a revenue forecast update at Issues, informing the Board that Metro had revised its forecasted collection amount from \$225 million to \$325 million, and that Clackamas County could expect to receive an additional \$21.3 million, increasing the anticipated carryover balance from \$58.6 million to just under \$80.0 million.

With final revenue collections in and the county's fiscal year nearly closed, there is now a near-final carryover balance of SHS funds going into FY 2023-24. Final revenue collections came in

slightly above Metro’s revised forecast, resulting in \$23.8 million more than the budgeted forecast amount. In addition, while Clackamas County’s housing services programming increased spending more than fivefold over FY 2021-22, going from \$3.3 million to approximately \$17.9 million, actual spending for FY 2022-23 will come in approximately \$3.9 million less than expected. When paired with unspent Contingency & Stabilization Reserves of \$3.2 million, that adds an additional \$7.1 million to the carryover balance. **Based on the final revenue collections coming in \$23.8 million more than expected, and with programmatic underspending and unspent Contingency & Stabilization Reserves of \$7.1 million, there is an unallocated \$30.9 million in one-time carryover funds to add to the \$58.6 million from the plan approved by the Board on June 14.** Therefore, the near-final carryover balance is \$89.5 million.



Staff will seek direction from the Board on allocation of the additional \$30.9 million at a future policy session in September.

Update on Solicitations for Clackamas Village and Navigation/Resource Centers

Staff are planning to proceed with formal solicitations for construction of Clackamas Village and proposals for community investments in Navigation/Resource Centers. The Clackamas Village project team has received draft architectural designs/layouts (see Attachment 2) and is ready to direct the architect to prepare a bid set of plans for the formal solicitation. Likewise, Housing & Community Development Division staff are prepared to solicit proposals from the community for capital investments in Navigation/Resource Centers. Results of the solicitations will be communicated to the Board and any resulting contracts will be brought to the Board for formal approval.

Respectfully Submitted,

Adam Brown, Deputy Director

Attachments:

- Attachment 1 – Updated SHS Budget Table
- Attachment 2 – DRAFT Clackamas Village Architectural Layout-Plans

Attachment 1 – Updated SHS Budget Table

	FY 2021-22 Actual	FY2022-23 Actual*	FY 2023-24 Budget
Regional SHS Revenue			
Actual Tax Collections	238,269,627	336,341,900	
Forecasted Tax Collections	-		234,100,000
Tax Collection Costs	(18,967,255)	(14,717,916)	(10,701,686)
Metro Administration	(11,025,532)	(10,542,299)	(11,169,916)
Remaining for Distribution	208,085,099	311,081,685	212,228,398
Clackamas County SHS Revenue (21.33%)			
Actual Tax Collections	44,391,488	66,364,093	
Forecasted Tax Collections			45,275,392
Interest	33,192	100,000	100,000
Prior Year(s) Carryover Balance	(157,465)	40,912,115	58,623,269
Total SHS Resources	44,267,215	107,376,208	103,998,661
Unallocated Revenue in Excess of Budgeted Amount			23,752,939
Unallocated Underspending**			7,115,255
Clackamas County SHS Expenses			
Actual SHS Expenses	3,355,100	17,884,745	-
Anticipated SHS Expenses**			45,375,392
Total SHS Expenses	3,355,100	17,884,745	45,375,392
Total SHS Carryover Balance	40,912,115	89,491,463	89,491,463

*Subject to final fiscal year end accounting adjustments.

**Includes \$3,220,000 of funds allocated for prior year Contingency & Stabilization Reserves.

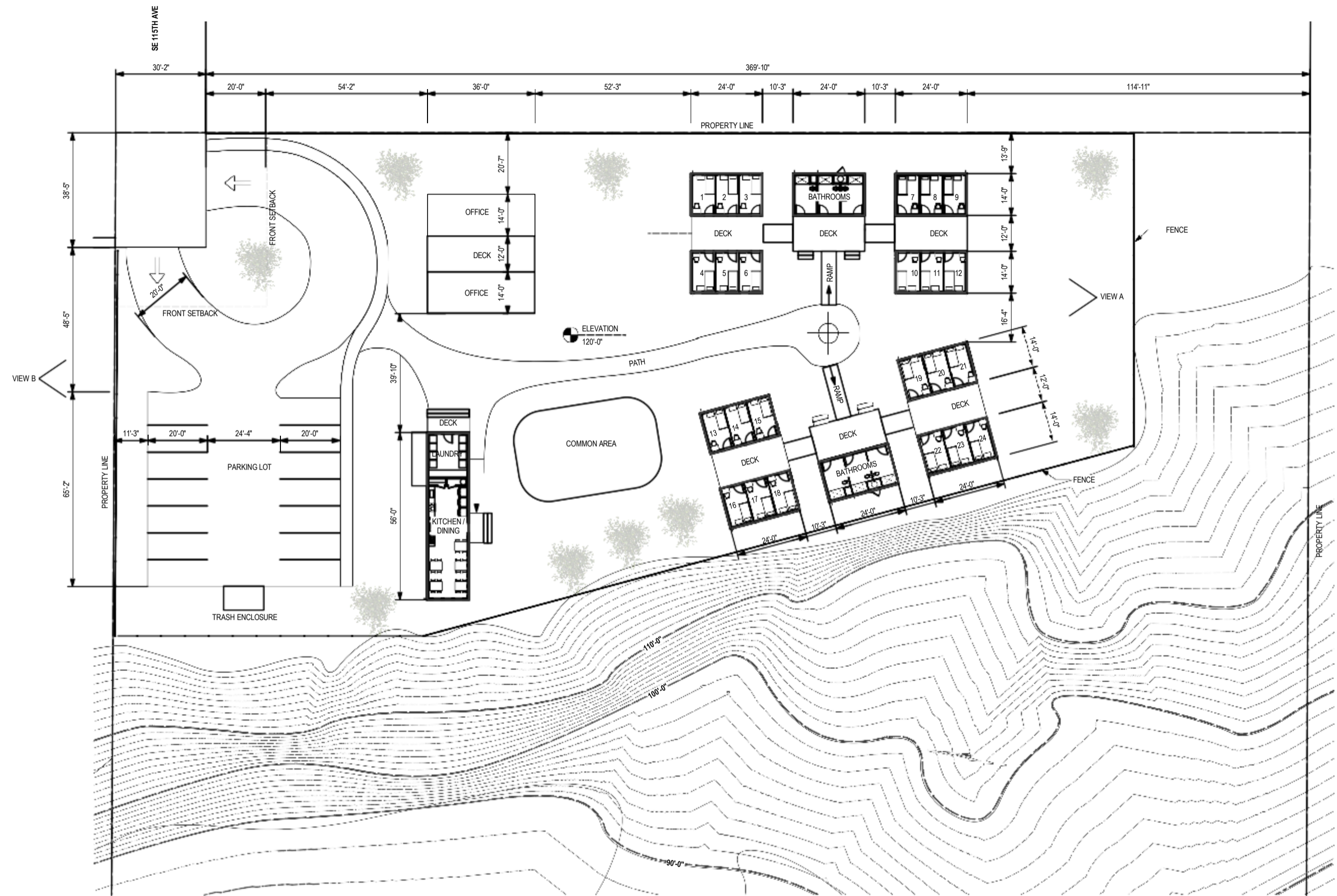
***Anticipated expenses for FY 2023-24 will be based on finalized plan for spending carryover balance.



VIEW B - AERIAL VIEW LOOKING EAST



VIEW A - AERIAL VIEW LOOKING WEST



1 SITE PLAN
Scale: 1" = 20'-0"



Schematic Design
7/28/2023

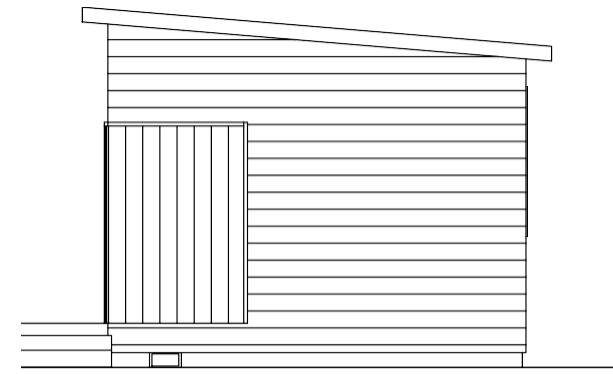
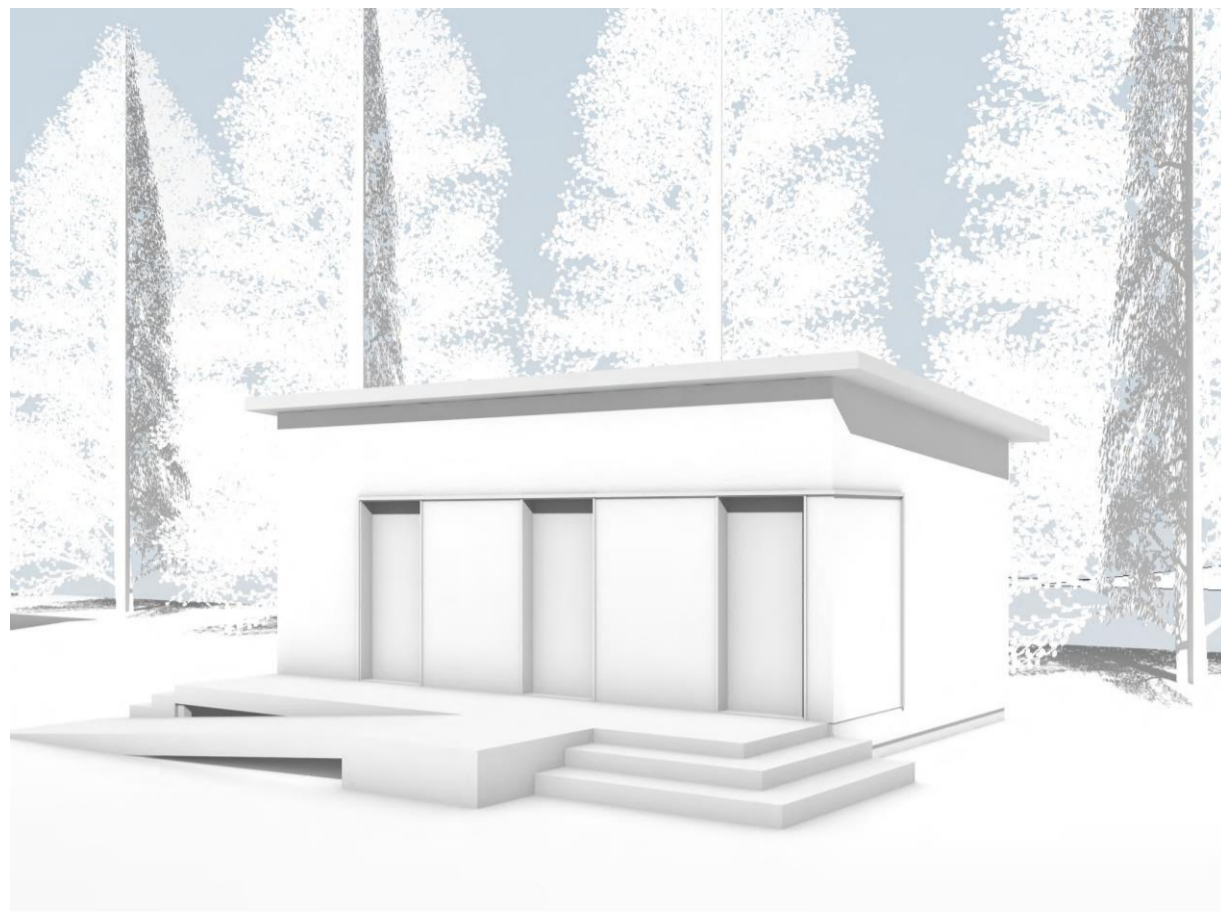
Revision
Date: Issue:

Clackamas Emergency Shelter
16590 SE 114th Ave
Clackamas, Oregon 97015

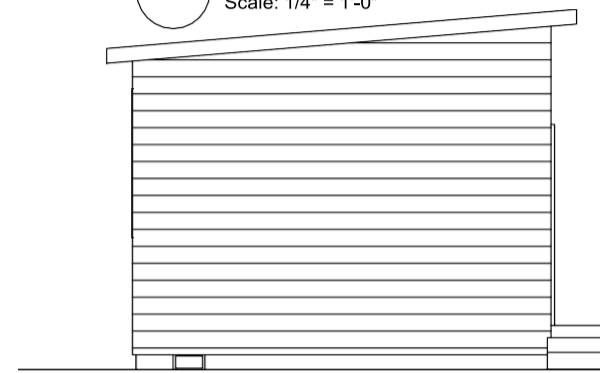
Sheet Title:
SITE LAYOUT

Sheet Number:

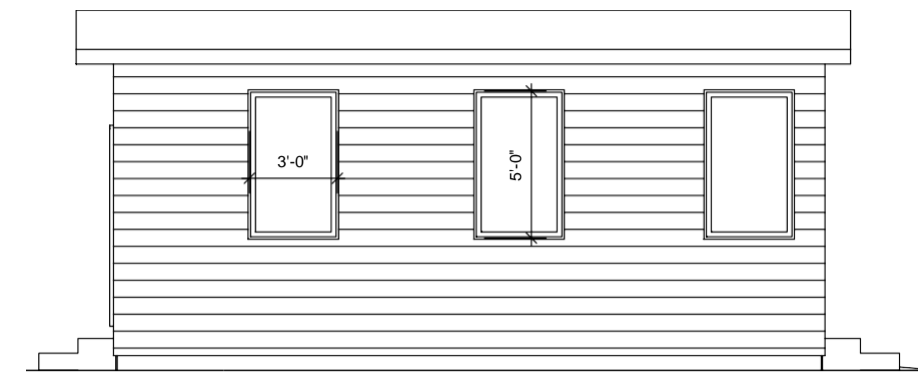
A01



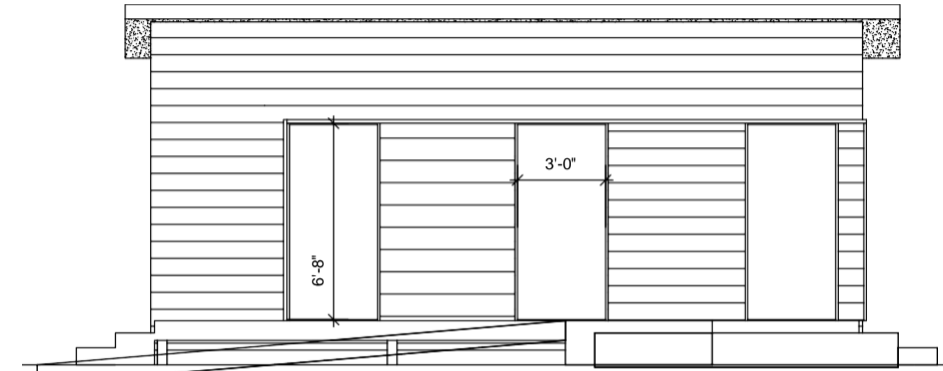
10 BUILDING SECTION - RIGHT
Scale: 1/4" = 1'-0"



9 BUILDING ELEVATION - LEFT
Scale: 1/4" = 1'-0"



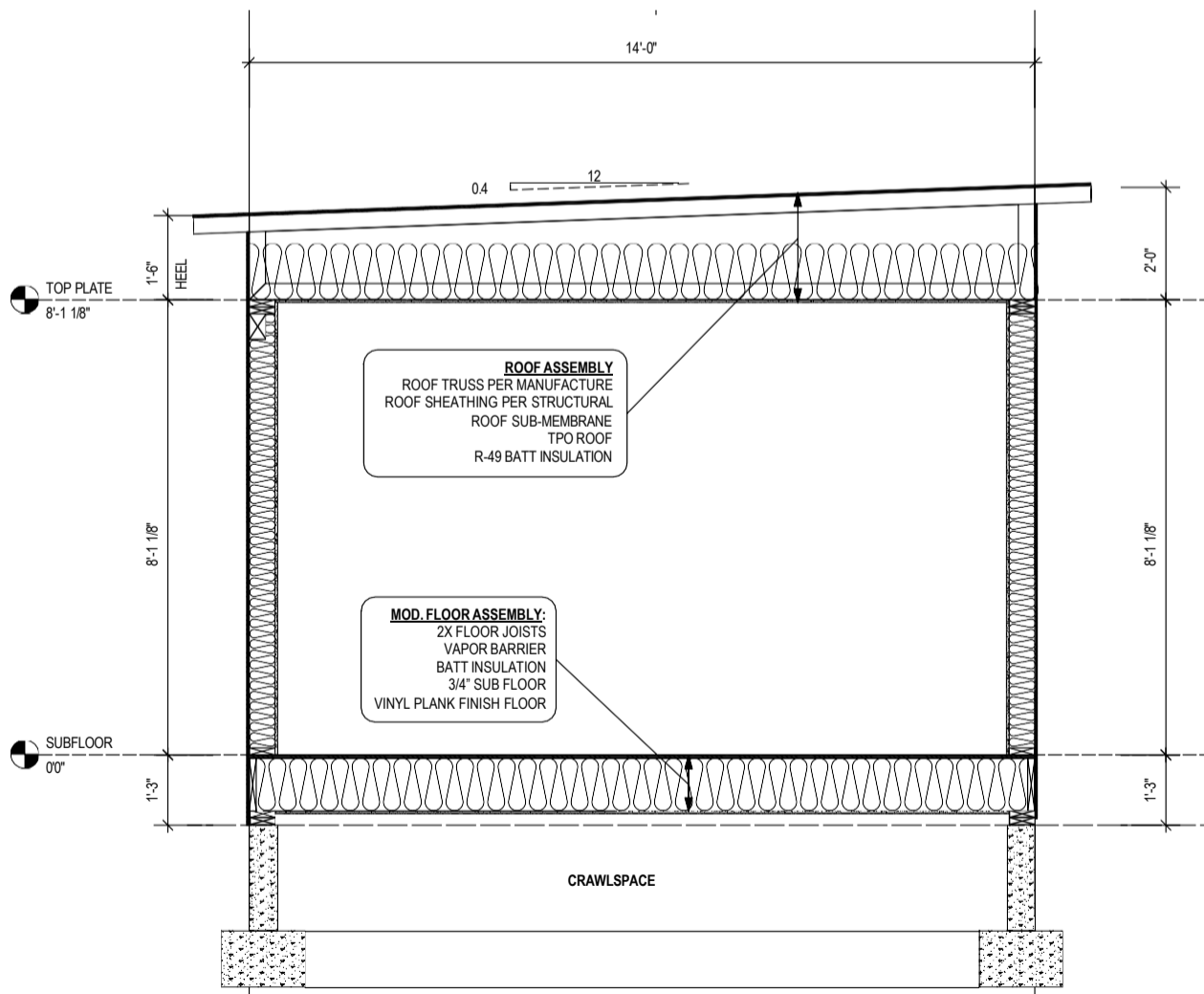
8 BUILDING ELEVATION - BACK
Scale: 1/4" = 1'-0"



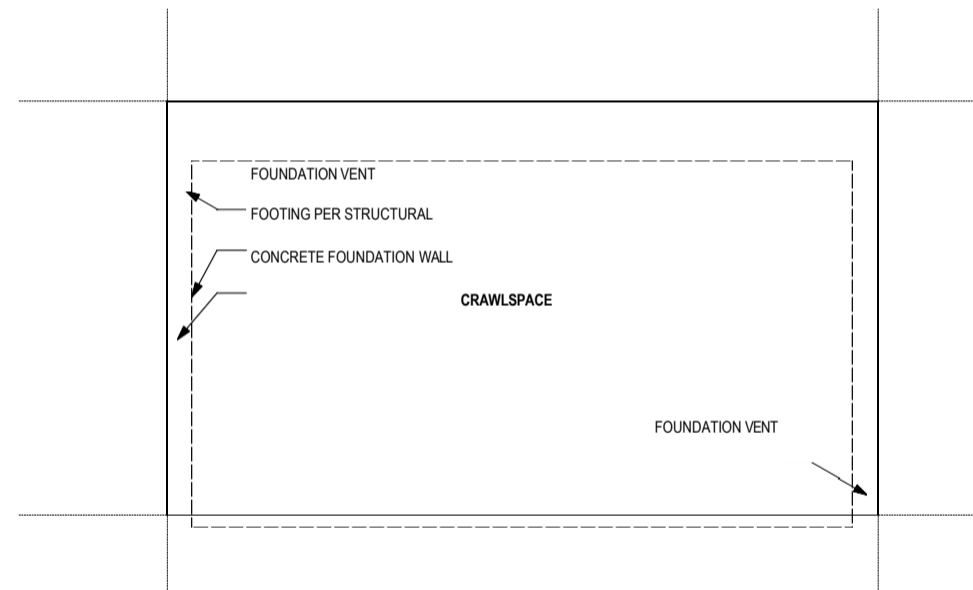
7 BUILDING ELEVATION - FRONT
Scale: 1/4" = 1'-0"

ELECTRICAL / MECH. LEGEND

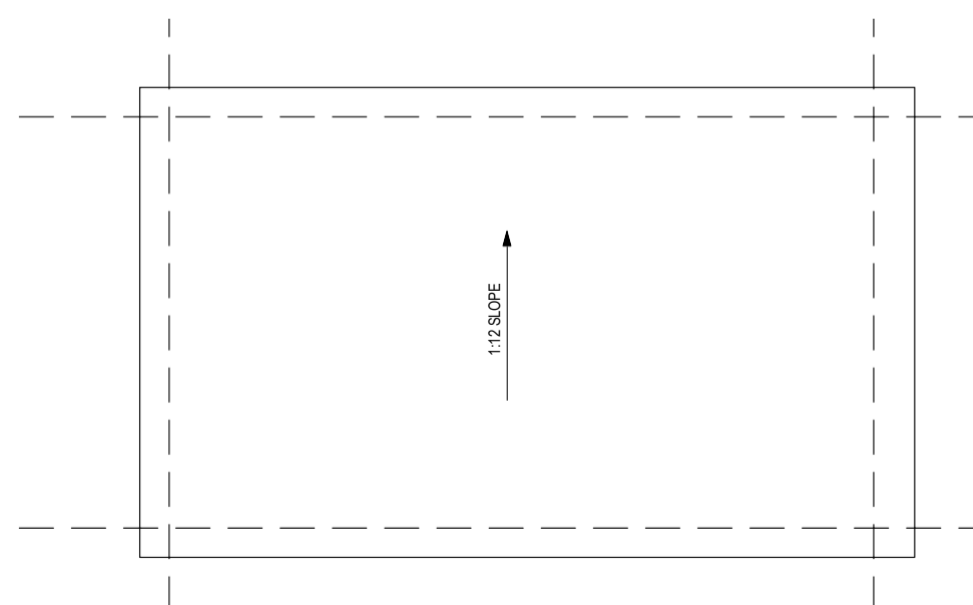
	SINGLE POLE SWITCH (MOUNT AT +48" A.F.F.)		WALL MOUNTED THERMOSTAT TO ELECTRIC HEATER (MOUNT AT +48" A.F.F.)
	STANDARD DUPLEX RECEPTACLE (MOUNT AT +18" A.F.F.)		CEILING MOUNTED SMOKE, FIRE, CARBON MONOXIDE ALARM (HARD WIRED W/ BATTERY BACKUP)
	4" LED CAN LIGHT - 2700K		ELECTRICAL PANEL
	SURFACE MOUNTED LIGHT FIXTURE		SPOT ERV
	SCONCE		COVE WALL HUNG HEATER CONNECTED TO THERMOSTAT 7'-0" FFF.
	EXT. SURFACE MOUNT SCONCE FLOOD LIGHT MOTION SENSOR		
	EXT. SURFACE MOUNT SCONCE LIGHT 6" A.F.F.		



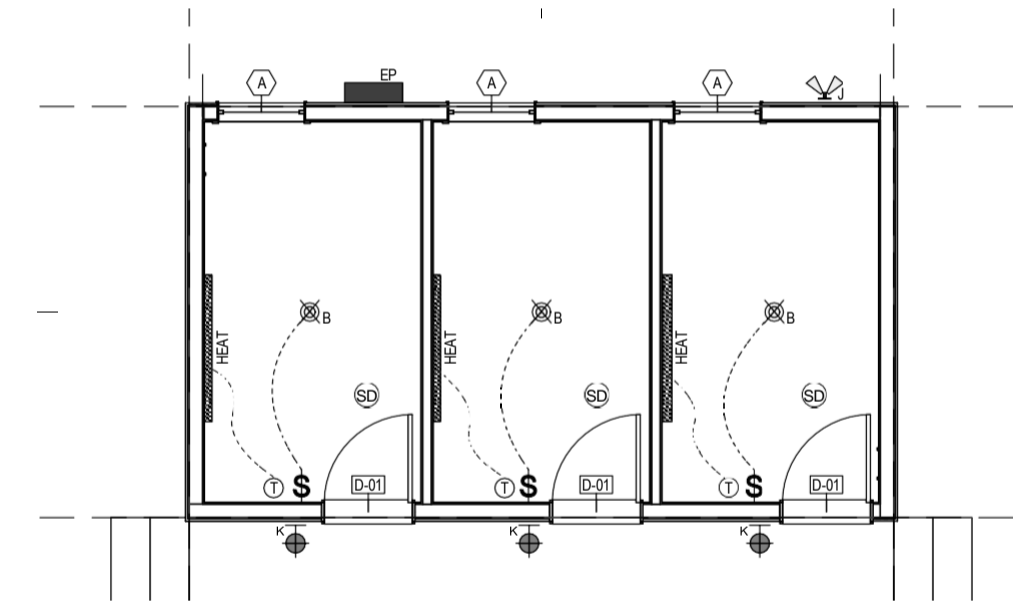
5 BUILDING SECTION
Scale: 1/2" = 1'-0"



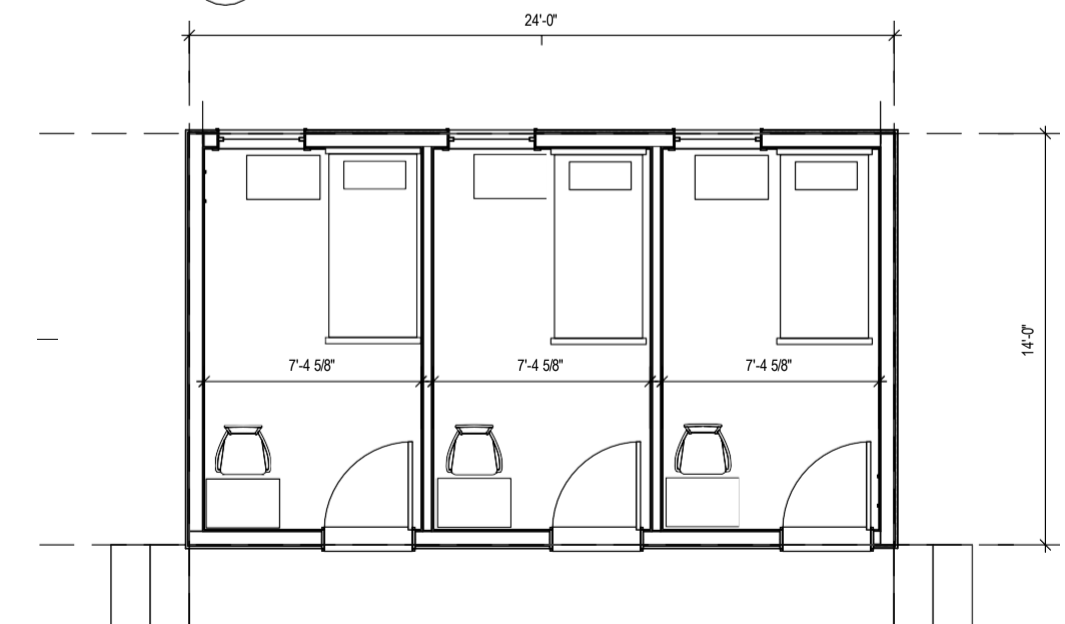
3 Foundation Plan
Scale: 1/4" = 1'-0"



4 Roof Plan
Scale: 1/4" = 1'-0"



2 MEP Plan
Scale: 1/4" = 1'-0"



1 Floor Plan - 3 Unit
Scale: 1/4" = 1'-0"



Schematic Design
7/28/2023

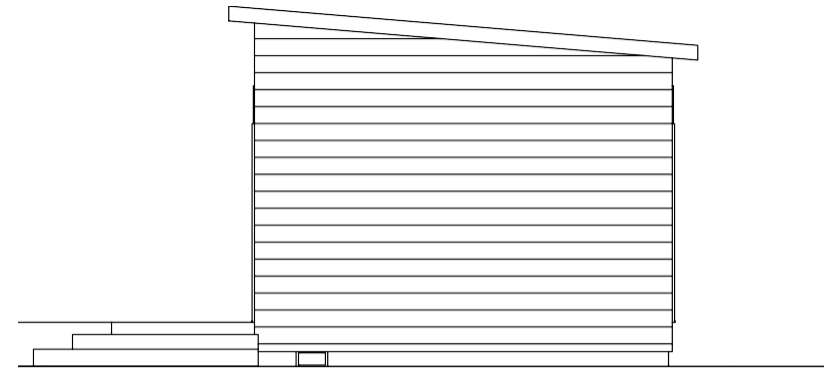
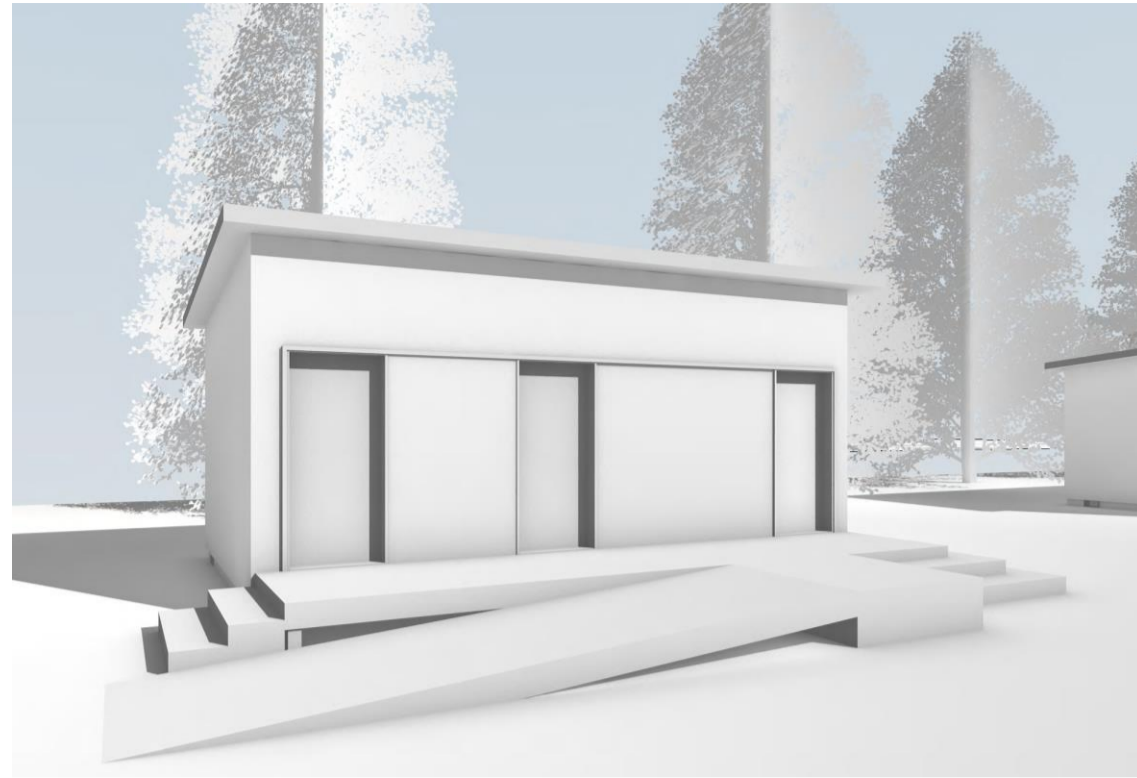
Revision
Date: Issue:

Clackamas Emergency Shelter
16590 SE 114th Ave
Clackamas, Oregon 97015

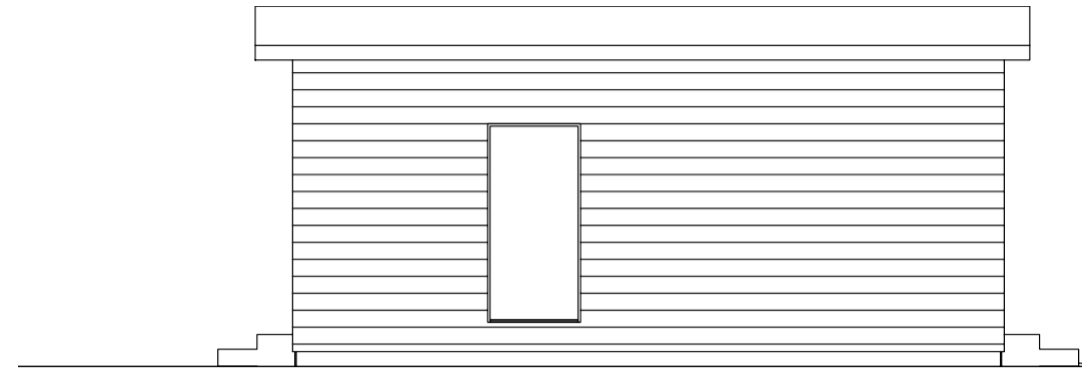
Sheet Title:
3 UNIT SLEEPING UNIT

Sheet Number:

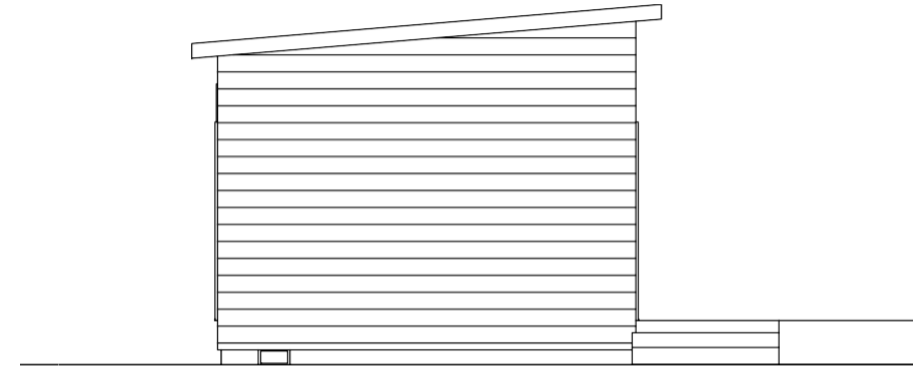
A02



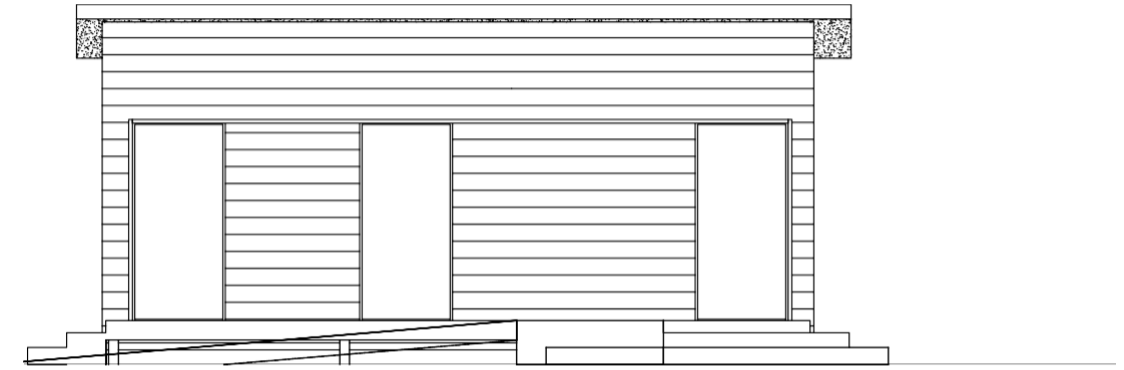
5 BUILDING ELEVATION - RIGHT
Scale: 1/4" = 1'-0"



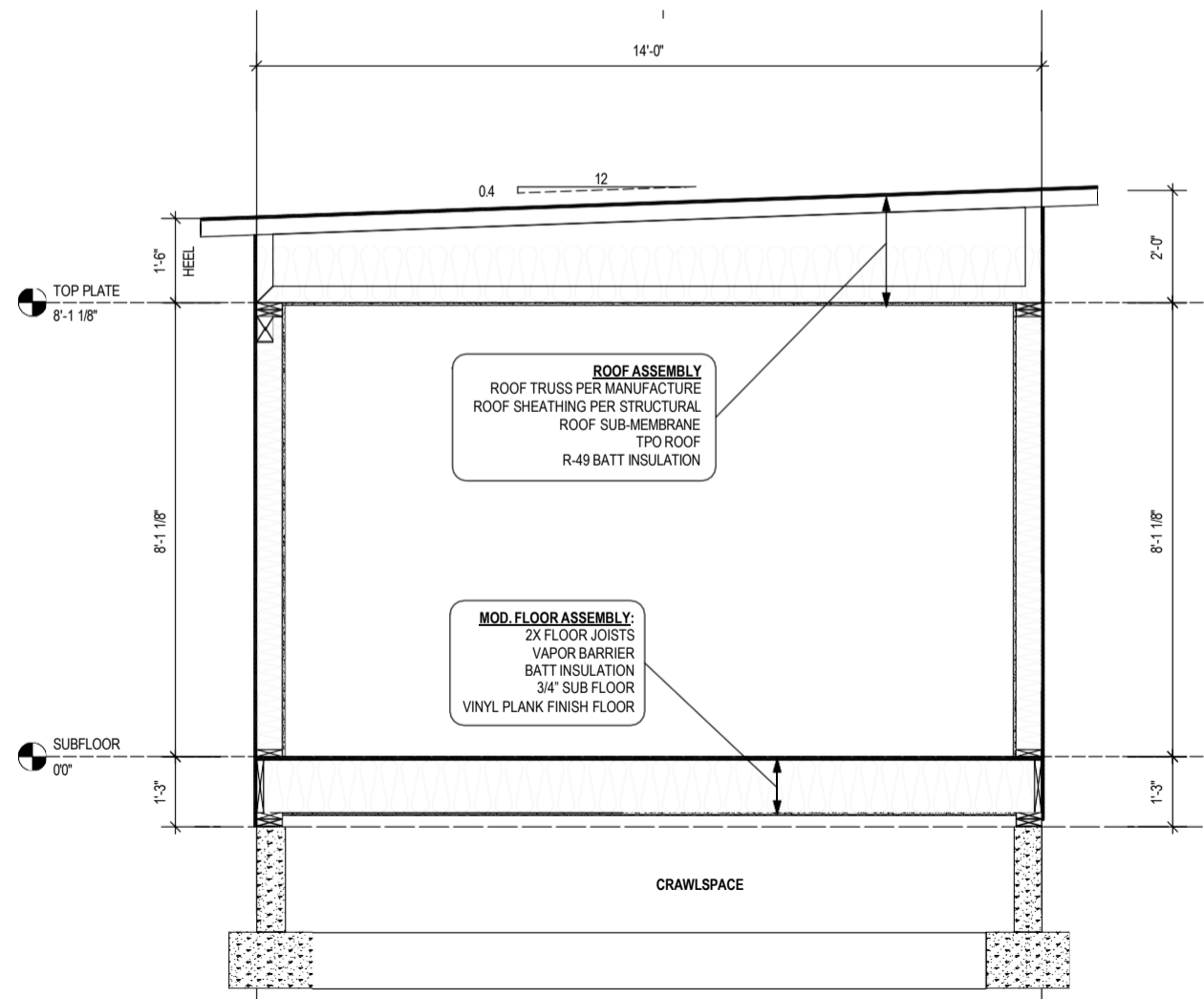
3 BUILDING ELEVATION - REAR
Scale: 1/4" = 1'-0"



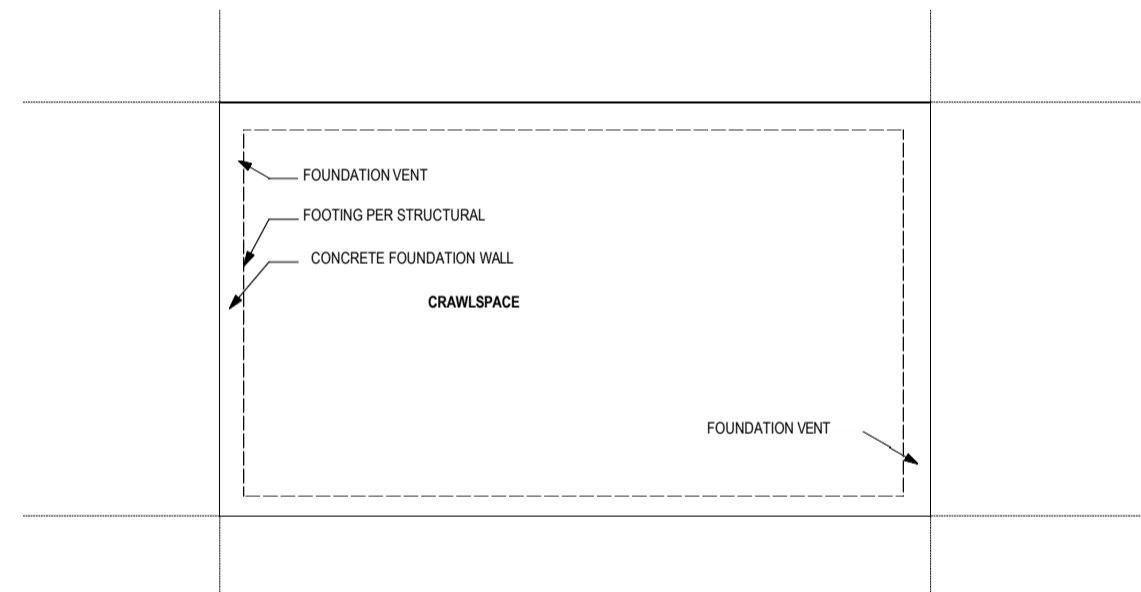
4 BUILDING SECTION - LEFT
Scale: 1/4" = 1'-0"



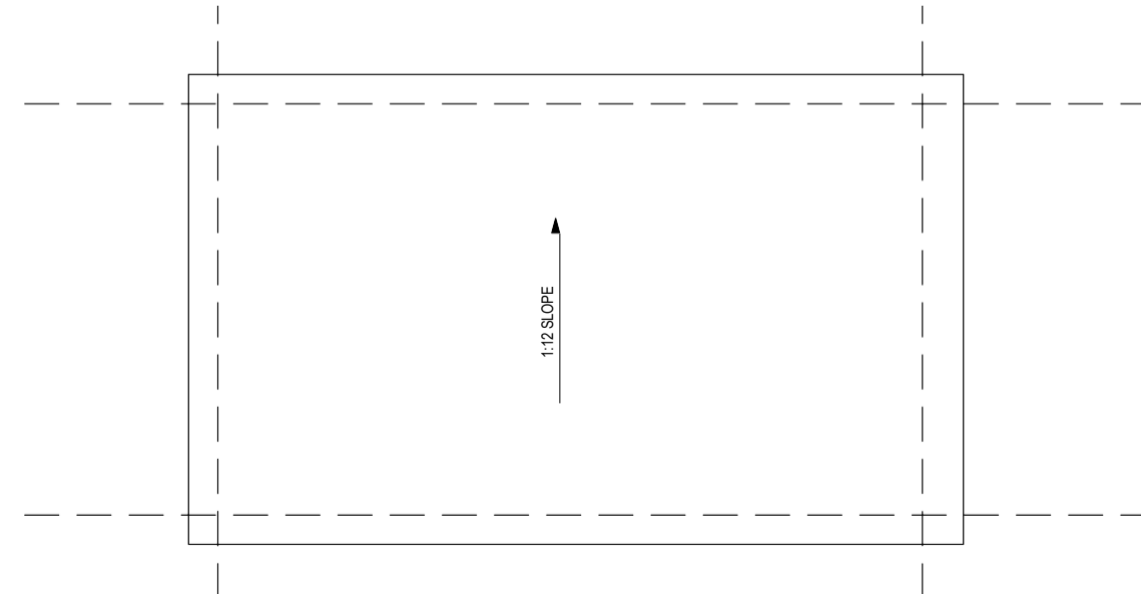
2 BUILDING ELEVATION - FRONT
Scale: 1/4" = 1'-0"



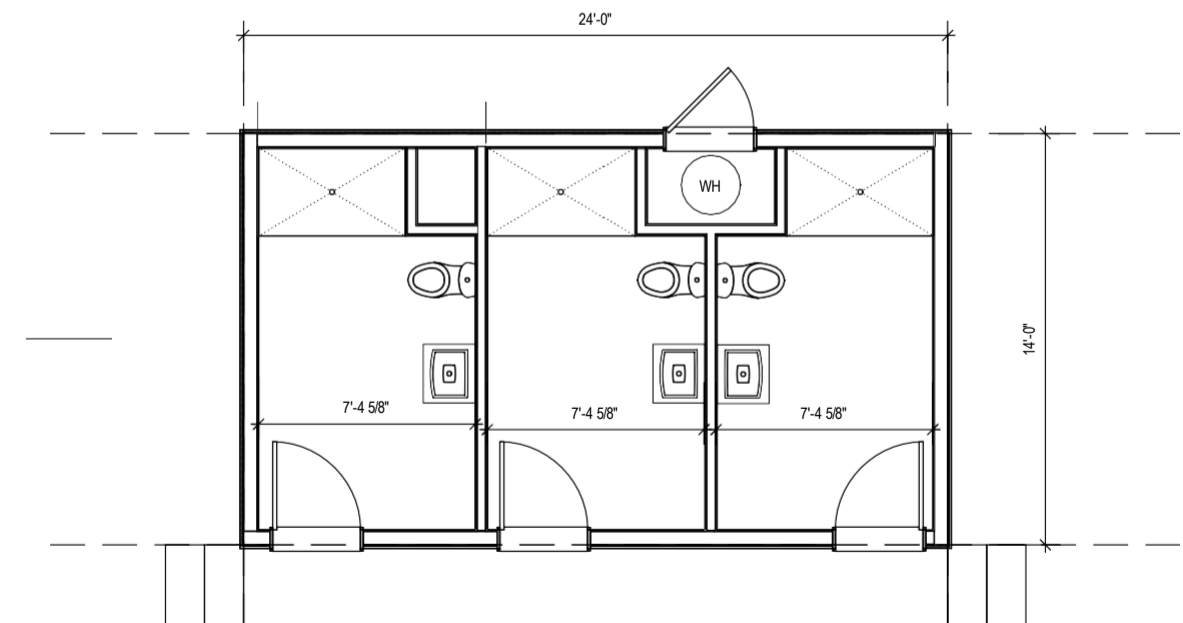
8 BUILDING SECTION
Scale: 1/2" = 1'-0"



6 Foundation Plan
Scale: 1/4" = 1'-0"

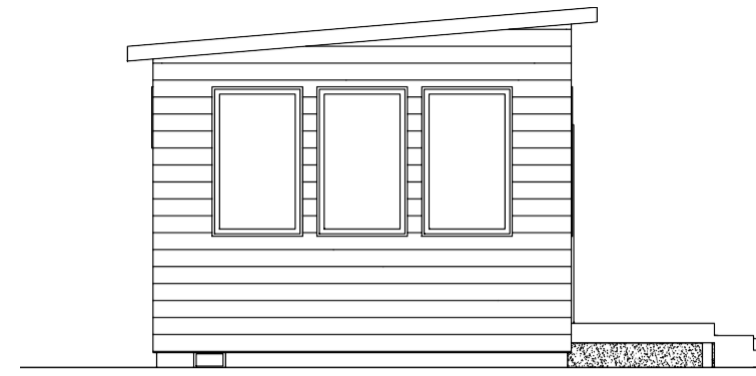
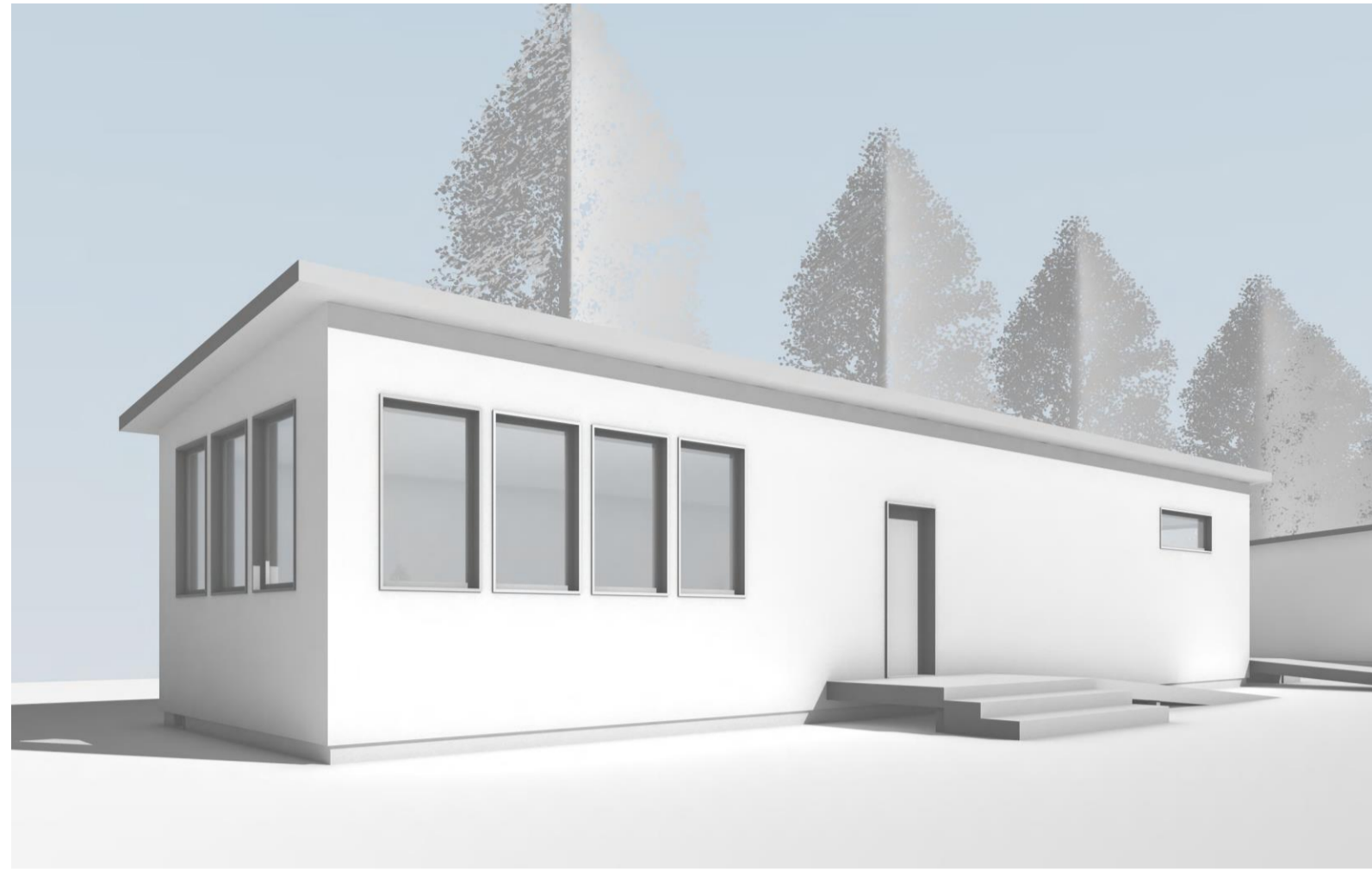


7 Roof Plan
Scale: 1/4" = 1'-0"

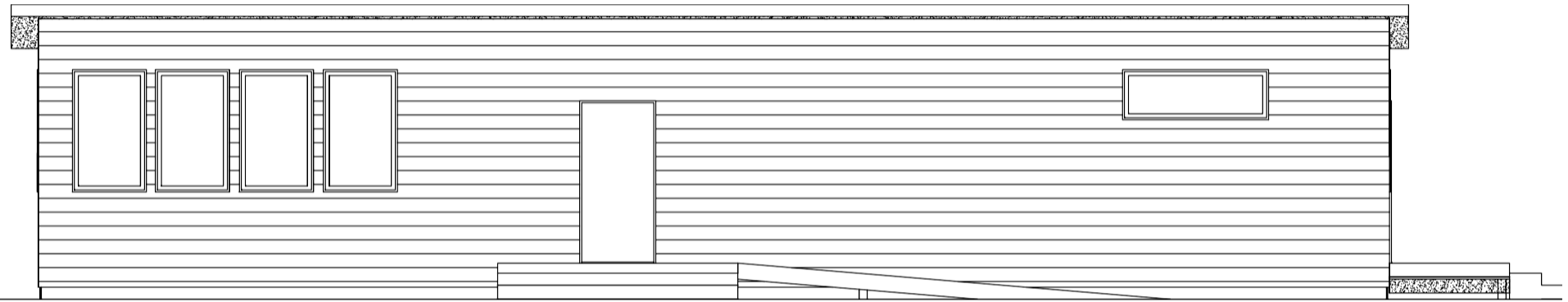


9 Floor Plan - 3 Unit Bath
Scale: 1/4" = 1'-0"

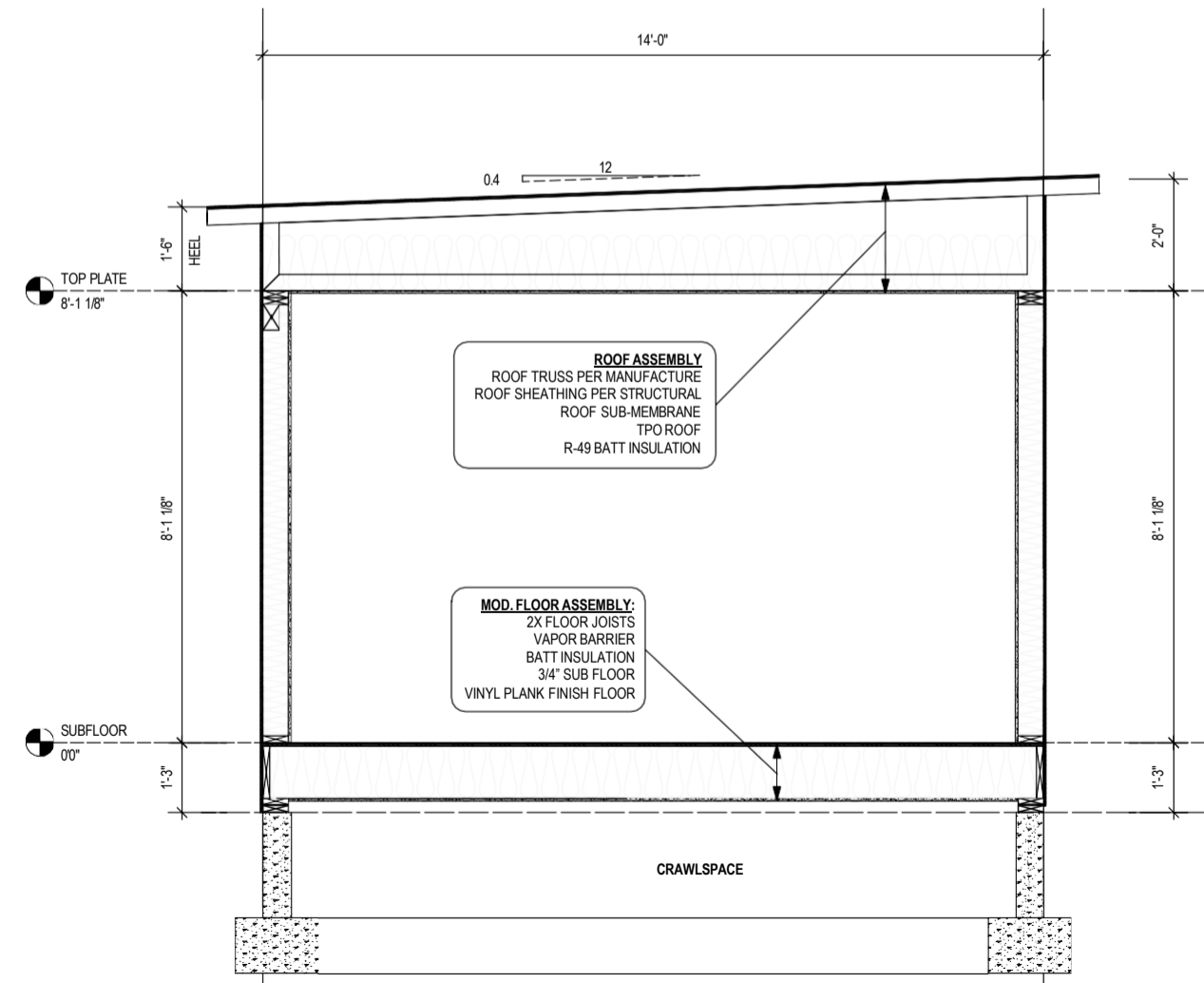
Revision	
Date:	Issue:



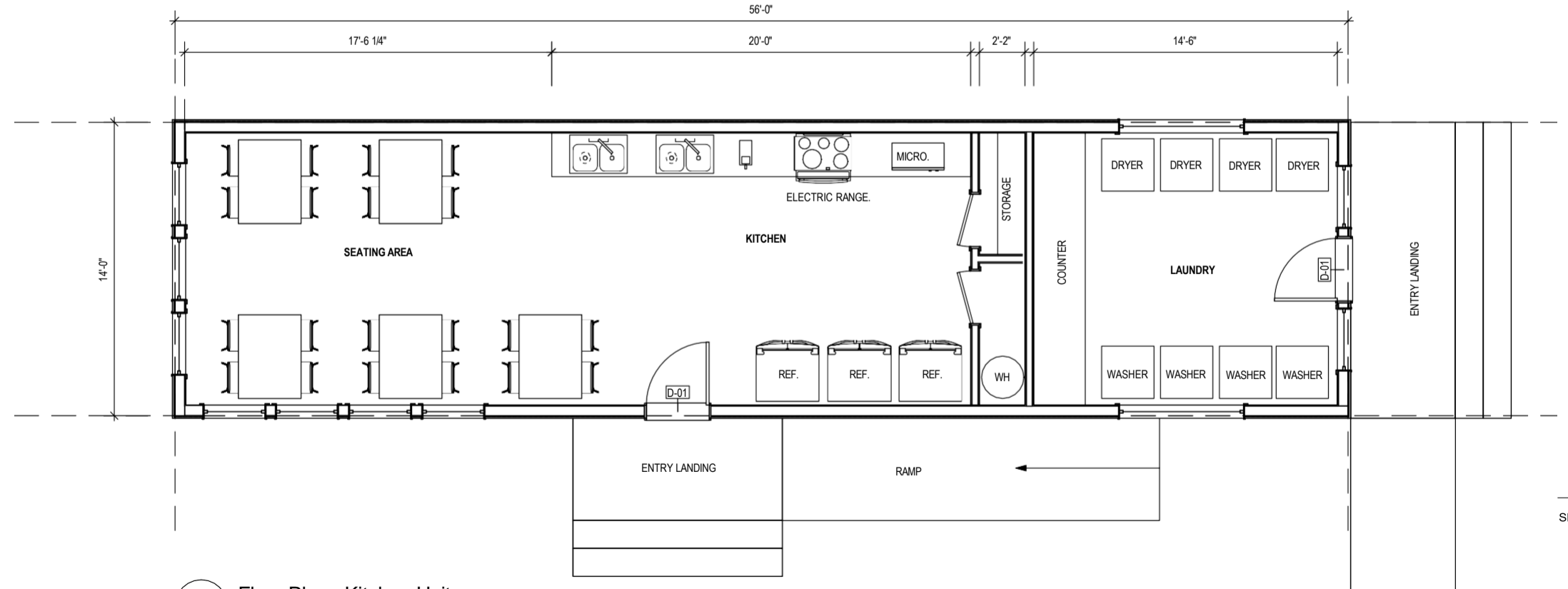
3 BUILDING ELEVATION - LEFT
Scale: 1/4" = 1'-0"



2 BUILDING ELEVATION - FRONT
Scale: 1/4" = 1'-0"

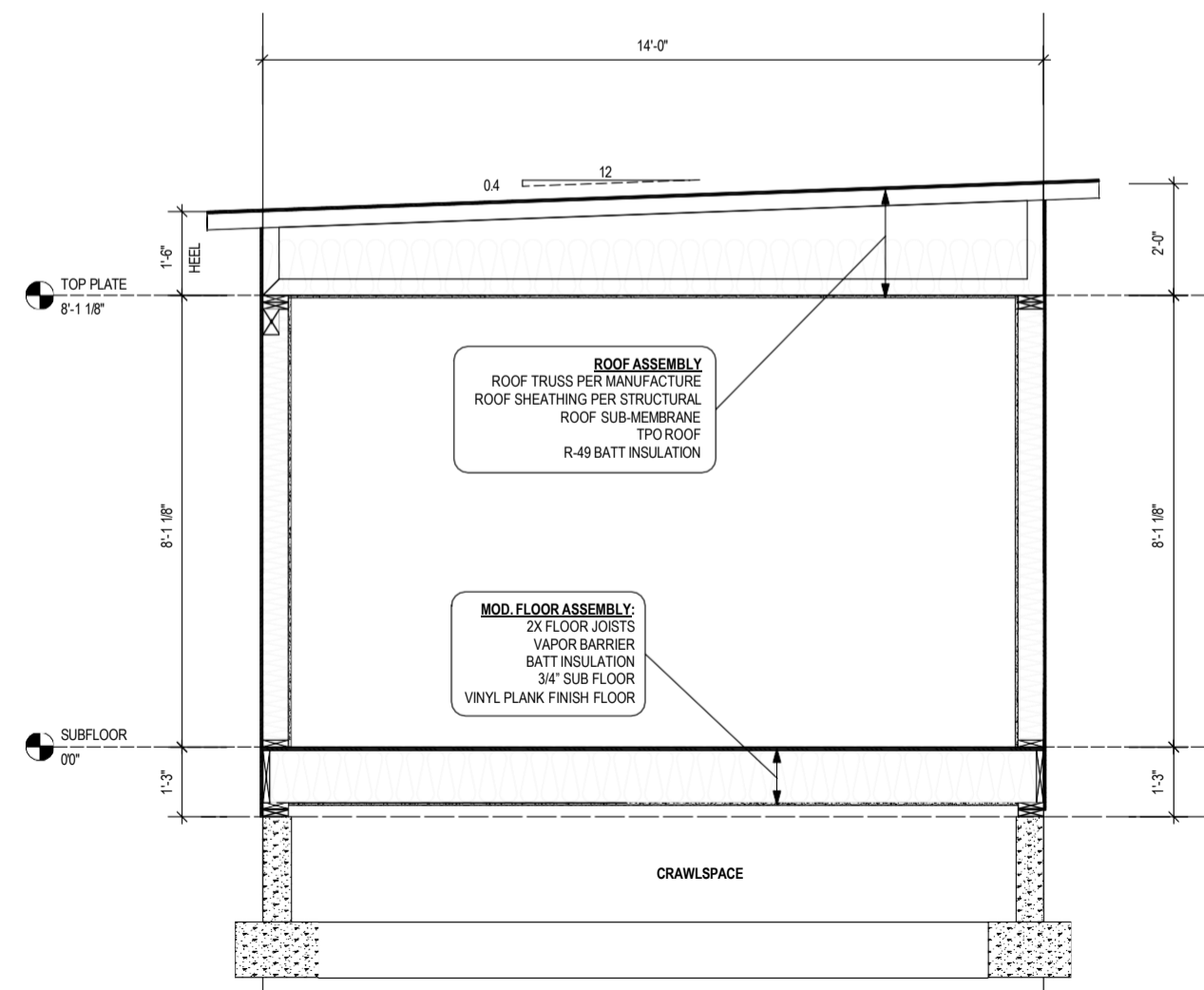


13 BUILDING SECTION
Scale: 1/2" = 1'-0"

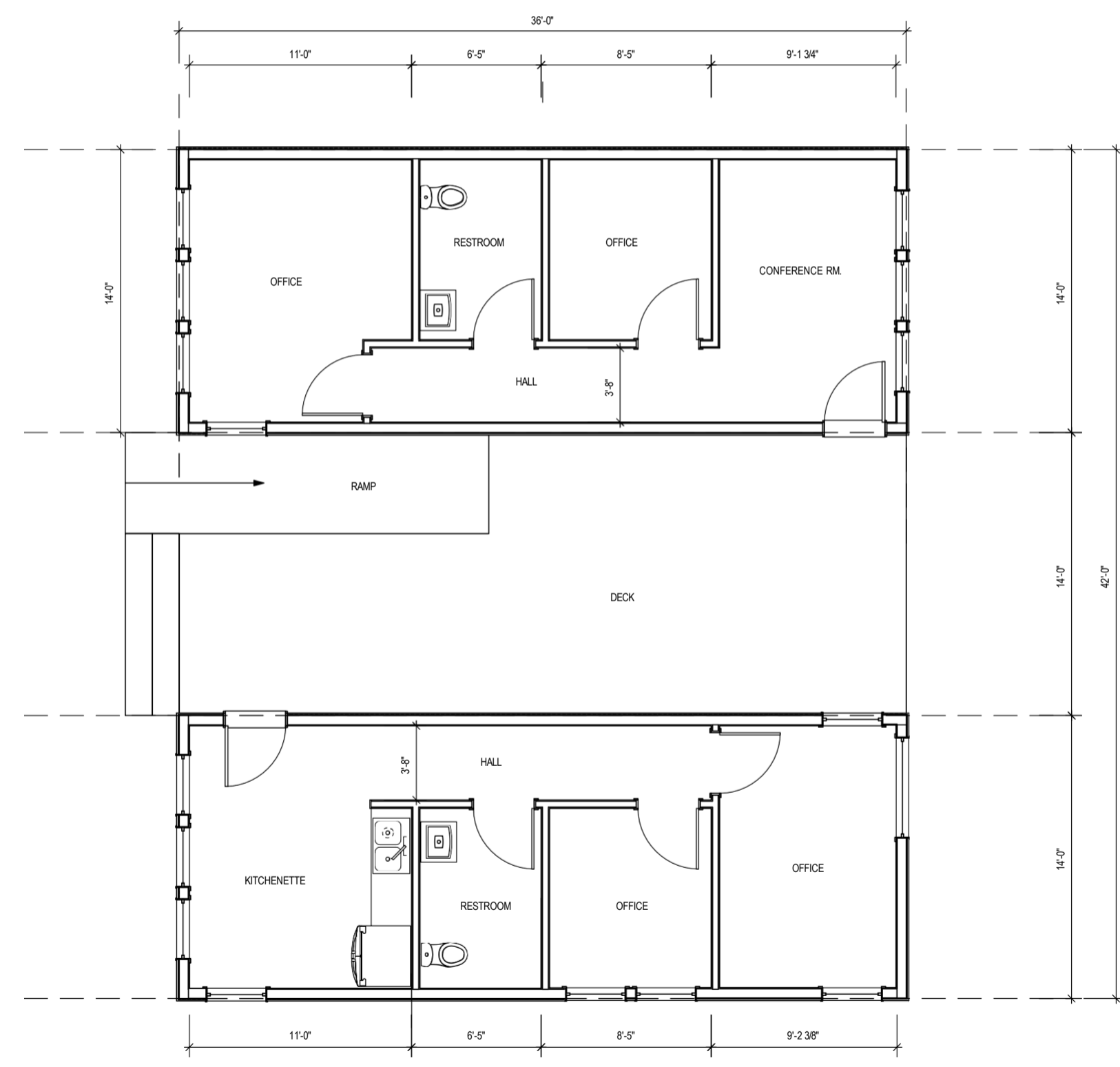


1 Floor Plan - Kitchen Unit
Scale: 1/4" = 1'-0"

Revision	
Date:	Issue:



7 BUILDING SECTION
Scale: 1/2" = 1'-0"



1 Floor Plan - Office Units
Scale: 1/4" = 1'-0"

