

Supportive Housing Services

in Clackamas County





Metro Measure 26-210

- Framework created by HereTogether, a coalition of businesses and social service agencies
- Metro Council referred measure in February 2020
- Regional voters approved in May with 58 percent support

Distribution of resources

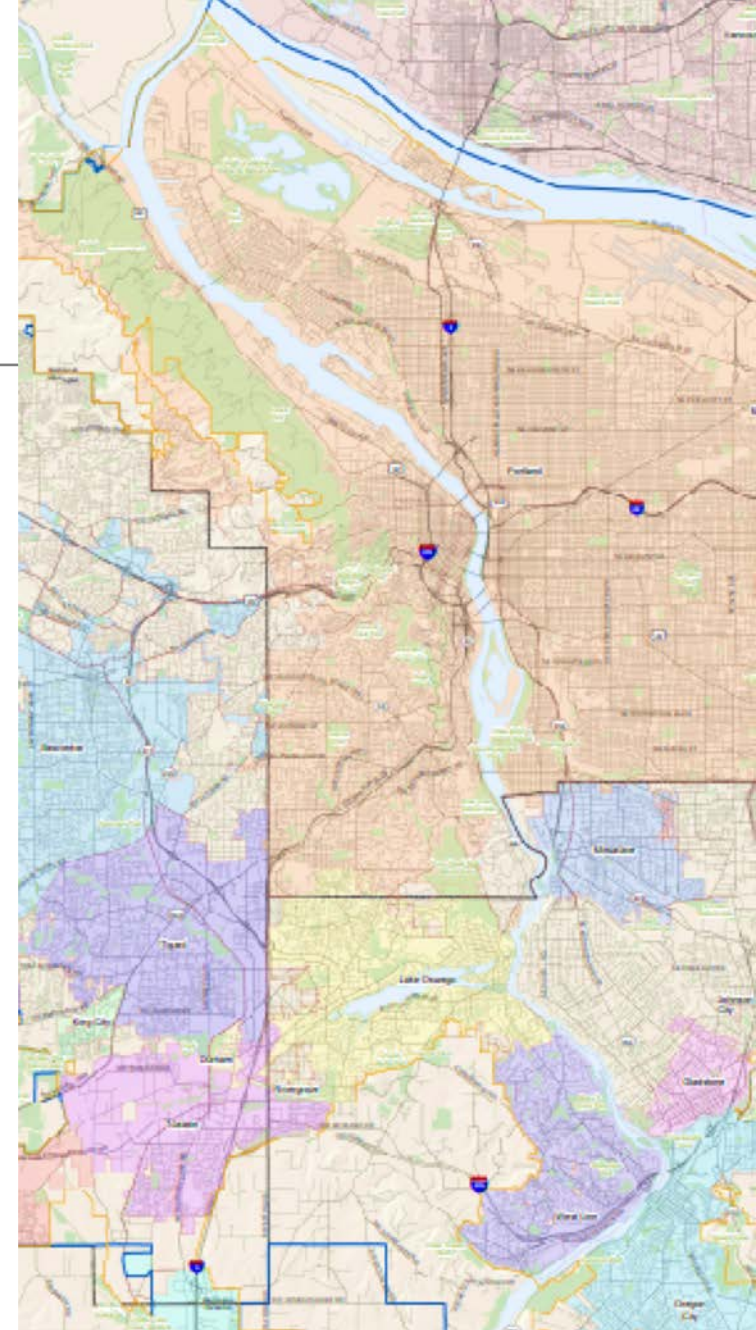
Income-based distribution:

Multnomah County — 45.33%

Washington County — 33.33%

Clackamas County — 21.33%

Up to 5% to Metro for oversight & administration



Homelessness in the region

Point-in-Time count	5,711 people experiencing homelessness
Student homelessness	7,134 students (K-12) experiencing homelessness
Chronic or prolonged homelessness	as many as 4,935 households
At risk of prolonged homelessness	as many as 17,500 households
Severely rent burdened	as many as 56,000 households

What can the funds be used for?

- supportive housing
- long-term rent assistance
- short-term rent assistance,
- housing placement services
- eviction prevention
- shelter and transitional housing





Prioritizing communities in need

- Communities of color and those disproportionately impacted by homelessness
- People with disabilities experiencing, or at risk of, prolonged homelessness, and with extremely low incomes
- People experiencing episodic homelessness or at risk of homelessness

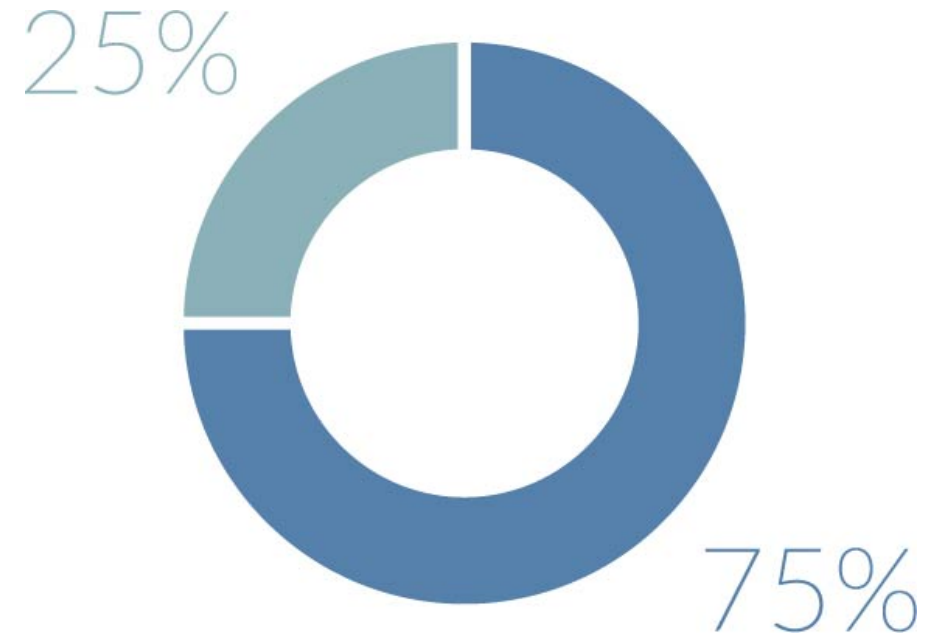
How will the funds be divided?

25% of SHS funds will be devoted to services for people who:

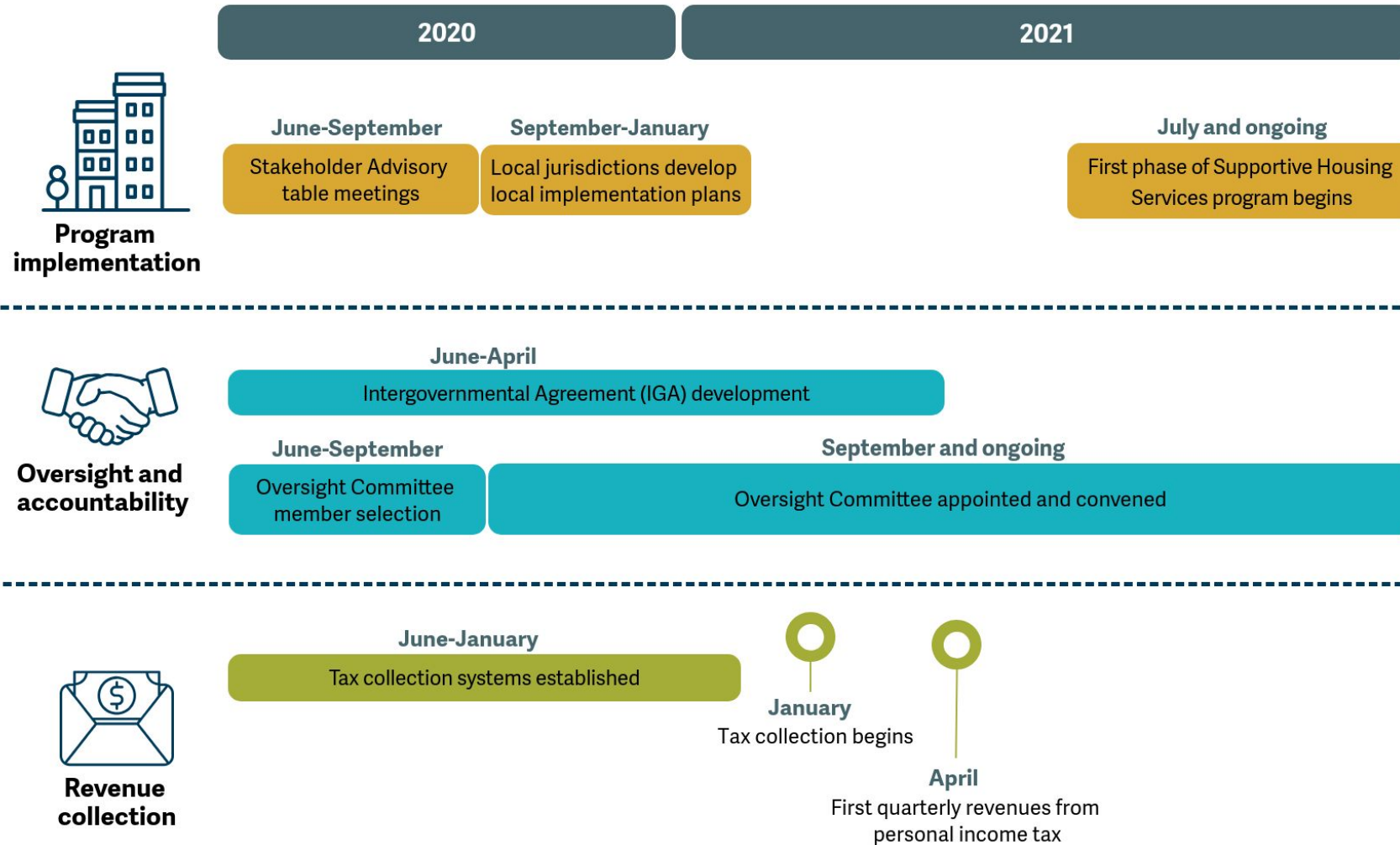
- Are currently experiencing homelessness; OR
- Have a substantial risk of experiencing homelessness.

75% of SHS funds will be devoted to services for people who:

- Have extremely low-income; AND
- Have one or more disabling conditions; AND
- Are experiencing or at imminent risk of experiencing long-term or frequent episodes of literal homelessness.



Implementation timeline



We want to hear from you!

- Our Local Implementation Plan will include:
 - commitment to racial equity
 - local need analysis and local program priorities
 - commitment to regional priorities, metrics, and coordination





For more information and updates

Visit bit.ly/ClackamasSHS

Vahid Brown

VBrown@clackamas.us