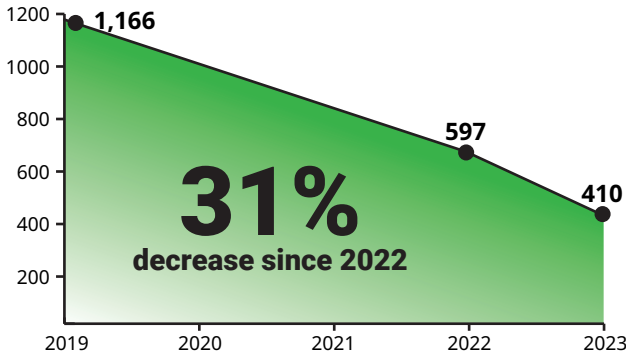
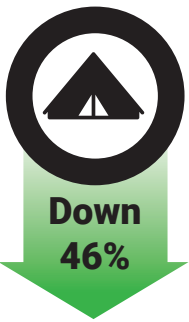




2023 Point In Time (PIT) Homeless Count

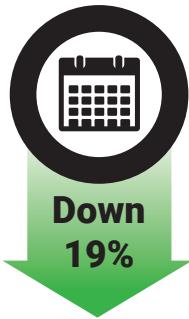


Clackamas County conducted its homeless count in January 2023. On a single night, 410 people were counted as homeless (sheltered and unsheltered) in the county. This is a decrease of 31% from 2022 and 65% from 2019.



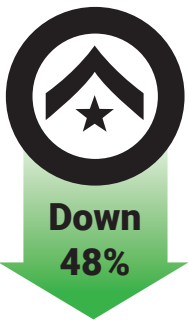
Unsheltered Homelessness

In 2023, people experiencing homelessness in shelter made up 57% (232 people) of the total, while people without shelter made up 43% (178 people) of the total.



Chronic Homelessness

People experiencing chronic homelessness — someone that has been experiencing homelessness for longer than one year — made up 60% (246 people) of the count.

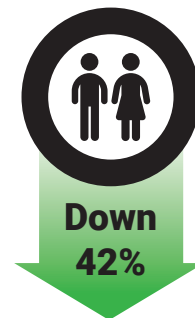
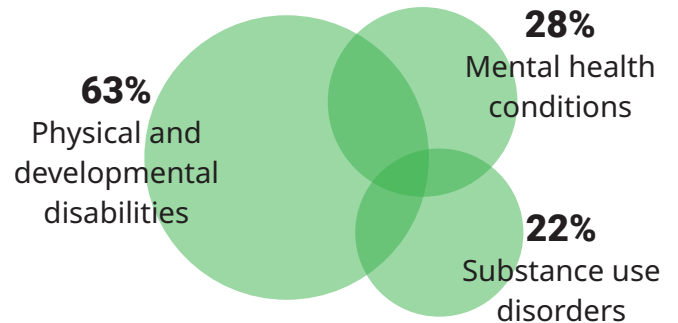


Veterans

Veterans made up 8% (31 people) of the count. Through programs such as the Veterans' Village we are working towards eliminating veteran homelessness.

Disabling Conditions

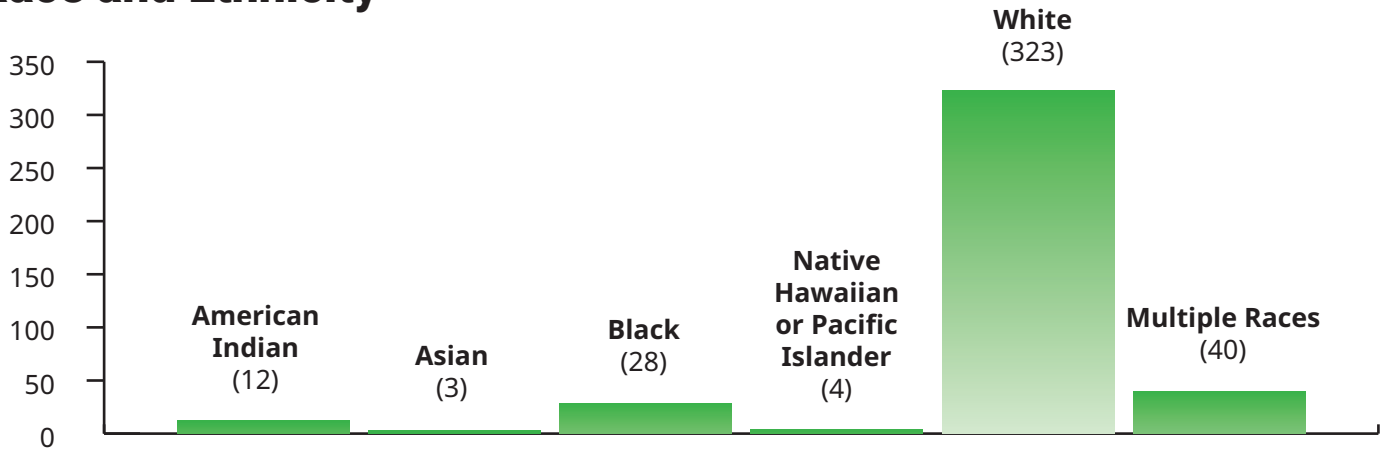
63% (258 people) reported a physical or developmental disability, 28% (113 people) reported a disabling mental health condition, and 22% (90 people) reported a substance use disorder. Many people had more than one of these conditions.



Domestic Violence

Survivors of domestic violence and trafficking made up 20% (83 people) of the homeless count. This is a 42% decrease from the previous year. The county funds several domestic violence shelters and housing programs.

Race and Ethnicity



Non-Hispanic*

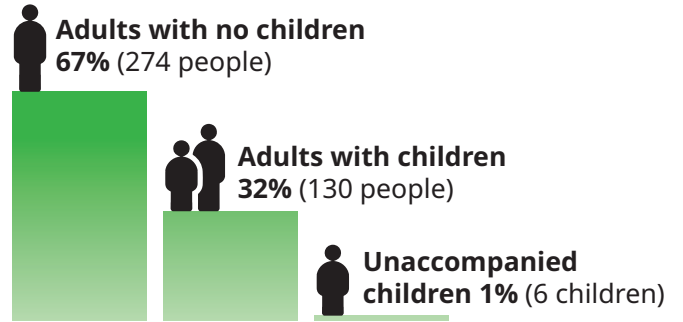
81%
(332)



Hispanic*
19%
(78)

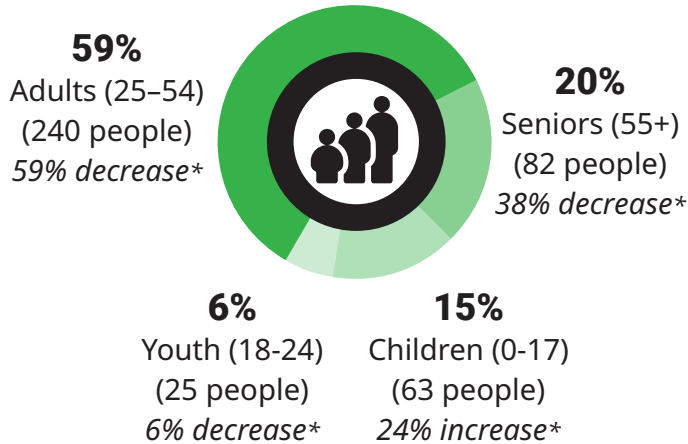
*Latin(a)(o)(x)

Household Type



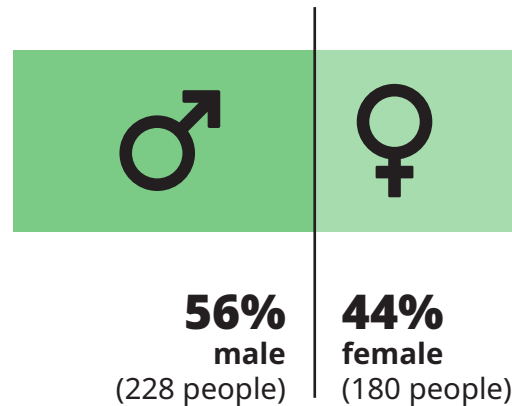
Age

We are investing in shelters and programs to address child and youth homelessness.



*from previous year

Gender



*fewer than 1% of people identified as transgender or other

While every point in time count should be considered an undercount—it is impossible to find and mandate participation for every individual lacking a fixed, regular place to sleep on one night in January—the results indicate the overall rate of homelessness in our community is decreasing.