

CLACKAMAS COUNTY BOARD OF COUNTY COMMISSIONERS

Sitting/Acting as (if applicable)

Policy Session Worksheet

Presentation Date: February 15, 2023 **Approx. Start Time:** 11:00 AM **Approx. Length:** 30 Minutes

Presentation Title: 2023 Regional Transportation Plan (RTP) Project list development, continued

Department: Department of Transportation and Development (DTD) – Long Range Transportation Planning Program

Presenters: Mike Bezner, Assistant Director Transportation, Karen Buehrig, Long Range Planning Manager

Other Invitees: Dan Johnson, Director, DTD, Steve Williams, Principal Transportation Planner; Jamie Stasny, Land Use and Policy Coordinator DTD

WHAT ACTION ARE YOU REQUESTING FROM THE BOARD?

Review draft 2023 RTP project list of regionally significant transportation projects in urban unincorporated Clackamas County.

EXECUTIVE SUMMARY:

At the February 1, BCC Policy Session, staff provided an overview of the 2023 RTP “Call for Projects” process. At the policy session, the BCC requested that staff return so that there could be additional discussion about the Clackamas County proposed project list.

The RTP includes regionally significant priority highway, road, transit, biking and walking projects that are anticipated to be needed in the next 20 years. Clackamas County staff has prepared the attached project list which is recommended to be included in the 2023 RTP.

This list contains:

- An update of the current fiscally constrained priority projects that address the highest public priorities and most immediate regional transportation challenges. This list of projects will include projects for which funding has been committed and projects that can be implemented with funding the region currently expects to have available. The fiscally constrained list is divided into two time periods – 2024-2030 and 2031 – 2045.
- The projects included as additional strategic priority projects that the region should work together to develop funding for and construct. This list of projects includes priorities for which funding is not currently anticipated.

Staff provided the opportunity to meet with BCC members to gather their specific input into the projects on the list. From those meetings, the primary requested updates to the project list were to:

1) Remove the three projects nominated by Clackamas County on the TriMet system. On the 2018 list, these projects were (a) High Capacity Transit along McLoughlin Blvd, (b) Frequent Transit Service on 172nd Ave and (c) transit service along I-205. These were removed because recent work on the High Capacity Transit plan has reduced the priority of High Capacity Transit on McLoughlin Blvd. In addition, other general transit service is included within the projects that TriMet submits on its own list, so those projects were duplicative.

2) Added a project for Transit Demand Management and Transit Supportive uses within the 2031-2045 Fiscally Constrained list which will provide for implementation of Transportation Demand Management techniques and transit supportive investments such as micro transit, shuttles, mobility hubs, first and last mile options, shelters and park-and-rides.

In addition, staff updated the list for 2023 by making the follow types of changes:

- 1) Moved projects between time periods to address emerging priorities, such as the Stafford/Elligsen/65th Intersection
- 2) Refined project descriptions to reflect work that has been completed over the past few years.
- 3) Updated cost estimates to reflect year of expenditure.

The draft 2023 RTP list will likely have small adjustments from coordination with the other Clackamas County jurisdictions over the next week. Staff will call attention to these adjustments during the BCC policy session. The BCC is not required to submit a letter of support at this time.

The C4 Metro Subcommittee will discuss and provide input into the full coordinated Clackamas County 2023 RTP project list on February 15th, 2023. The Clackamas County Coordinating Committee (C4) will be asked to endorse the updated 2023 RTP project list for urban Clackamas County at their March 2nd meeting.

While staff is required to submit a draft list to Metro on February 17th, 2023, refinements to the draft project list may be identified between the end of February and May 24th, 2023. Staff will return to the BCC in May after the projects are analyzed by Metro staff and final adjustments have been made and request a letter of support at that time.

FINANCIAL IMPLICATIONS (current year and ongoing):

Is this item in your current budget? YES NO

What is the cost? \$0.00

What is the funding source? N/A

STRATEGIC PLAN ALIGNMENT:

- How does this item align with your Department's Strategic Business Plan goals?

Provides Plan development coordination to County decision makers so they can plan and invest based on a coordinated set of goals and policies that guide future development.

- How does this item align with the County's Performance Clackamas goals?
Build strong Infrastructure

LEGAL/POLICY REQUIREMENTS:

The Regional Transportation Plan is required to be updated every 5 years in order to maintain the federal funding into the region.

PUBLIC/GOVERNMENTAL PARTICIPATION:

Staff is coordinating with other jurisdictions in Clackamas County through the Clackamas Transportation Advisory Committee (CTAC), a staff committee organized to provide technical input to C4. Metro will also be hosting public engagement opportunities later in 2023 for input into the project list.

OPTIONS:

- 1) Review the draft list of projects to be submitted by Clackamas County into the 2023 RTP, advise staff on any project adjustments.
- 2) No Action


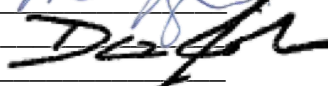
RECOMMENDATION:

- 1) Review the draft list of projects to be submitted by Clackamas County into the 2023 RTP, advise staff on any project adjustments.

ATTACHMENTS:

ATTACHMENT 1: 2018 RTP list Clackamas County project list

SUBMITTED BY:

Division Director/Head Approval 
Department Director/Head Approval 
County Administrator Approval _____

For information on this issue or copies of attachments, please contact _Karen Buehrig @ 503-742-4683

TSP ID	RTP Investment Category	Nominating Agency	Primary Facility Owner	RTP ID	Project Name	Start Location	End Location	Description	Base Estimated Cost (2023 dollars)	Time Period	YOE	Year of Expenditure Cost	2018 Financially Constrained project list
--------	-------------------------	-------------------	------------------------	--------	--------------	----------------	--------------	-------------	------------------------------------	-------------	-----	--------------------------	---

Fiscally Constrained 2024 - 2030

1079	Roads and Bridges	Clackamas County	Clackamas County	10054	65th/Elligsen/Stafford Intersection Roundabout	65th, Elligsen, Stafford Rd. intersections	65th, Elligsen, Stafford Rd. intersections	Implement proven safety counter measure, a roundabout, at a high crash intersection identified in the county adopted TSAP.	\$14,000,000	2024 - 2030	2027	\$15,593,200	Yes
1034 / 2008	Active Transportation	Clackamas County	Clackamas County	10102	Linwood Ave	Monroe St	Johnson Creek Blvd	Add bikeways. Linwood Ave / Monroe St intersection improvements. Add curbs/sidewalks, improve horizontal alignments, add ADA accessibility features, add stormwater features.	\$14,642,825	2024 - 2030	2027	\$16,309,178	Yes
1068 A	Active Transportation	Clackamas County	Clackamas County	11503	Jennings Ave	Oatfield	OR 99E	Implement proven safety counter measures by widening to 2-lane urban minor arterial standard with bikeway and pedway infill, improvements to ADA accessibility and stormwater facilities.	\$2,350,000	2024 - 2030	2027	\$2,617,430	Yes
1068 B	Active Transportation	Clackamas County	Clackamas County	11503	Jennings Ave	River Rd	OR 99E	Implement proven safety counter measures by widening to 2-lane urban minor arterial standard with bikeway and pedway infill, improvements to ADA accessibility and stormwater facilities. Phase II of project that is currently underway.Phase II of project that is currently underway.	\$1,474,381	2024 - 2030	2027	\$1,642,166	Yes
1069	Active Transportation	Clackamas County	Clackamas County	11504	Oak Grove Blvd	Oatfield Rd	River RD	Fill gaps in pedways and bikeways.	\$2,678,760	2024 - 2030	2027	\$2,983,603	Yes
2013	Roads and Bridges	Clackamas County	Clackamas County	11514	82nd Drive/Strawberry Lane Intersection	82nd Dr/Strawberry Lane intersection	N/A	Improve safety at a key intersection on a high crash corridor by implementing proven safety counter measures, installing a traffic signal and turn lanes on eastbound and northbound approaches, improve ADA accessibility as necessary.	\$4,250,000	2024 - 2030	2027	\$4,733,650	Yes
1063	Active Transportation	Clackamas County	Clackamas County	11520	Courtney Ave	OR 99E	Oatfield Rd	Fill gaps in pedways and bikeways, improve intersection safety, increase access to employment, transit access and ADA accessibility.	\$2,600,000	2024 - 2030	2027	\$2,895,880	Yes
1011	Active Transportation	Clackamas County	Clackamas County	11522	97th Ave / Mather Rd	Lawnfield Rd	Summers Lane	Add bikeways, pedways along project length, add eastbound left turn lanes at Mather Rd / Summers Ln, provide ADA accessibility improvements as necessary.	\$4,847,280	2024 - 2030	2027	\$5,398,900	Yes
1064	Active Transportation	Clackamas County	Clackamas County	11525	Courtney Ave	River Rd	OR 99E	Construct pedway / complete gaps on the south side; add bikeways, improve ADA access, increase transit accessibility, improve access to employment.	\$7,025,630	2024 - 2030	2027	\$7,825,147	Yes
3027	Transportation System Management	Clackamas County	Clackamas County	11762	Sunnyside Road Adaptive Signal Control Phase II	132nd Ave	172nd Ave	Install adaptive signal control at major intersections from 132nd Ave to 172nd Ave and upgrade ADA accessibility features as necessary.	\$2,600,000	2024 - 2030	2027	\$2,895,880	Yes
4090	Active Transportation	Clackamas County	Clackamas County		I-205 Multiuse Path from OR 224 to OR 212 Design and Environmental	OR 224	OR 212	Conduct public engagement and prepare project preliminary design	\$1,500,000			\$1,670,700	
1028	Roads and Bridges	Clackamas County	Clackamas County	11763	Johnson Creek Blvd/79th Ave Intersection (TSAP) - (project underway using federal funds)	80th Place	79th Ave	Construct new signalized intersection at the intersection of Johnson Creek Blvd and either 79th Ave or 80th Place and implement proven safety counter measures at high injury location identified in county Transportation Safety Action Plan, including bike/ped and ADA accessibility improvements as necessary.	\$2,200,000	2024 - 2030	2027	\$2,450,360	Yes

TSP ID	RTP Investment Category	Nominating Agency	Primary Facility Owner	RTP ID	Project Name	Start Location	End Location	Description	Base Estimated Cost (2023 dollars)	Time Period	YOE	Year of Expenditure Cost	2018 Financially Constrained project list
	Transportation System Management	Clackamas County	Clackamas County	11766	Johnson Creek/Linwood Ave ITS Improvements (project underway using federal funds)	Johnson Creek Blvd/Linwood Ave Intersection	NA	Implement proven safety counter measures by adding intelligent transportation system improvements at the intersection of Johnson Creek Blvd and Linwood Ave to provide warnings and special phasing for bicyclists and pedestrians. Include ADA accessibility improvements as necessary.	\$1,400,000	2024 - 2030	2027	\$1,559,320	Yes
3016 / 1027	Active Transportation	Clackamas County	Clackamas County	11774	Johnson Creek Blvd and Bell Ave Intersection Safety Improvements (TSAP)	Johnson Creek Blvd/Bell Ave intersection	NA	Improve intersection of Johnson Creek Blvd and Bell Ave to improve intersection safety by implementing proven safety counter measures for bicyclist and pedestrians as identified in county Transportation Safety Action Plan and improve ADA accessibility. No change in intersection capacity.	\$1,500,000	2024 - 2030	2027	\$1,670,700	Yes
4015/4074	Active Transportation	Clackamas County	ODOT	10024	McLoughlin Blvd. Improvement	Milwaukie	Gladstone	Improve safety for bicyclist and pedestrians by adding bikeways, pedestrian facilities, fill sidewalk gaps, add transit supportive elements, improve ADA accessibility, and implementing proven safety counter measures.	\$7,685,000	2024 - 2030	2027	\$8,559,553	Yes
1035 / 1036	Active Transportation	Clackamas County	Clackamas County	11494	Monroe St	Linwood Ave	Fuller Rd	Add bikeways, pedways and traffic calming and safety measures, improve ADA accessibility, improve stormwater, increase access to transit and access to employment for historically marginalized community. Combines two projects from 2014 RTP.	\$6,073,647	2024 - 2030	2027	\$6,764,828	Yes

Clackamas County YEO Total \$85,570,495

TARGET \$97,390,135

Fiscally Constrained 2031 - 2045

1035/1036	Active Transportation	Clackamas County	Clackamas County	10003	Harmony Road Improvements	Linwood Ave	Fuller Rd	Add bikelanes and sidewalks where needed, including safety treatments at intersections and ADA accessibility improvements as necessary.	\$7,441,000	2031 - 2045	2038	\$12,106,507	Yes
1020	Active Transportation	Clackamas County	Clackamas County	10009	Fuller Rd. Improvements	Otty Rd.	Johnson Creek Blvd.	Add pedestrian facilities, turn lanes, on-street parking, central median and landscaping, improve pedestrian treatments at intersections and improve ADA accessibility.	\$4,400,000	2031 - 2045	2038	\$7,158,800	Yes
1008	Active Transportation	Clackamas County	Clackamas County	10022	82nd Drive Bike and Pedestrian Improvements	Jennifer	Herbert Court	Improve safety for bicyclists and pedestrians by implementing proven safety counter measures and filling gaps in bikeways and pedestrian facilities.	\$3,750,000	2031 - 2045	2038	\$6,101,250	Yes
1087	Active Transportation	Clackamas County	Clackamas County		Stafford Rd Improvements	I-205	Boeckman Rd / Advance Rd	Implement needed safety investments as identified in Road Safety Audit.	\$8,862,900	2031 - 2045	2038	\$14,419,938	Yes
1081	Active Transportation	Clackamas County	Clackamas County	10043	Borland Rd from Tualatin to Stafford Rd	Tualatin City Limits	Stafford Rd	Add paved shoulders and turn lanes at major intersections. The project or a portion of the project is outside the designated urban growth boundary	\$8,500,000	2031 - 2045	2038	\$13,829,500	Yes
3061	Active Transportation	Clackamas County	Clackamas County	10050	Johnson Rd., Clackamas Rd., McKinley Rd.	Lake Rd.	Hwy 212	Bikeway and pedestrian facilities infill, including safety treatments at intersections, stormwater improvements, and ADA accessibility improvements.	\$6,700,000	2031 - 2045	2038	\$10,900,900	Yes
1074	Active Transportation	Clackamas County	Clackamas County	11499	River Rd	Lark St	Courtney	Improve safety on known high crash corridor by implementing proven safety counter measures, adding bicycle and pedestrian facilities including ADA accessibility features and improvements to stormwater.	\$7,100,000	2031 - 2045	2038	\$11,551,700	Yes
1075	Active Transportation	Clackamas County	Clackamas County	11500	River Rd	Oak Grove Blvd	Risley Ave	Improving safety on known high crash corridor by implementing proven safety counter measures, filling gaps in bikeways and pedways networks including improvements to ADA accessibility and stormwater as necessary.	\$8,900,000	2031 - 2045	2038	\$14,480,300	Yes

TSP ID	RTP Investment Category	Nominating Agency	Primary Facility Owner	RTP ID	Project Name	Start Location	End Location	Description	Base Estimated Cost (2023 dollars)	Time Period	YOE	Year of Expenditure Cost	2018 Financially Constrained project list
1061	Active Transportation	Clackamas County	Clackamas County	11501	Concord Rd	River Rd	Oatfield Rd	Fill gaps in bike and ped facilities as necessary including improvements to stormwater facilities and ADA accessibility. Main project segments are from Trolley Trail to McLoughlin Blvd, and from Harold Rd to Oatfield Rd.	\$7,000,000	2031 - 2045	2038	\$11,389,000	Yes
2020	Active Transportation	Clackamas County	Clackamas County	11506	Clackamas Rd	Johnson Road	Webster Road	Fill gaps in bikeways and pedestrian facilities including improvements to stormwater facilities and ADA accessibility as needed.	\$5,400,000	2031 - 2045	2038	\$8,785,800	Yes
3000	Active Transportation	Clackamas County	Clackamas County	11772	Clackamas Industrial Area Bike/Ped Improvements (TSAP)	Intersection of 106th Ave and OR 212	Intersection of Jennifer Rd and 122nd Ave	Improve intersection of 106th and OR 212, and Jennifer Drive and 122nd Ave to facilitate bike and pedestrian safety per county adopted TSAP, and provide ADA accessibility improvements as needed. Also improve intersection geometry to facilitate truck access to industrial park.	\$2,800,000	2031 - 2045	2038	\$4,555,600	Yes
1019	Active Transportation	Clackamas County	Clackamas County	11491	Flavel Dr	Alberta Ave	County boundary	Add bikeways to provide connection between Springwater/Powerline trail and bike facilities on Flavel Dr and 52nd Ave in Portland.	\$3,450,000	2031 - 2045	2038	\$5,175,000	No
	TDM and TSMO	Clackamas County	Clackamas County	11937	Transit demand management and transit supportive investments	Countywide	Countywide	Implement Transportation Demand Management techniques and Transit supportive investments as identified in the Transit Development Plan, such as micro-transit, shuttles, mobility hubs, first and last mile options, shelters and park-and-rides	\$6,146,281	2031 - 2045	2038	\$10,000,000	Yes
3056	Roads and Bridges	Clackamas County	Clackamas County		Oatfield Road	Park Ave	Courtney	Add bikelanes and sidewalks where needed, including safety treatments at intersections and ADA accessibility improvements as necessary.	\$3,100,000	2031 - 2045	2038	\$5,043,700	
4012	Active Transportation	Clackamas County	Clackamas County	11767	I-205 Multiuse Path from OR 224 to OR 212	OR 224 - Sunrise Multi-use Path	OR 212 - I-205 Multi-use Path	Improve safety for bicyclists and pedestrians by filling a gap of approximately 1 mile in the I-205 Multi-use path and implementing proven safety counter measures, as well as creating connections to other regional multi-use paths and implementing ADA accessibility improvements as necessary.	\$6,300,000	2031 - 2045	2038	\$10,250,100	Yes
4046	Active Transportation	Clackamas County	Clackamas County	10014	82nd Ave. Multi-Modal Improvements	Clatsop Ave.	Monterey Ave.	Improve safety for bicyclists and pedestrians by implementing proven safety counter measures, widening to add sidewalks, lighting, central median, planting strips and landscaping.	\$14,456,800	2030 - 2045	2038	\$23,521,214	Yes
4046	Active Transportation	Clackamas County	Clackamas County	10018	82nd Ave. Bike and Ped Safety Improvements	Monterey Ave.	Sunnybrook Blvd.	Improve safety for bike and pedestrian system by completing gaps and implementing proven safety counter measures at identified locations within the corridor. Improve ADA accessibility.	\$1,745,000	2031 - 2045	2027	\$1,943,581	Yes
1040	Active Transportation	Clackamas County	NCPRD	11617	North Clackamas Regional Parks Trail	OR 213	Linwood Ave	Construct multi-use path from OR 213 to Linwood Ave through existing park, including ADA accessibility improvements as necessary.	\$1,955,920	2031 - 2045	2038	\$3,182,282	Yes
4003 / 4045	Roads and Bridges	Clackamas County	ODOT	11670	Intersection Improvements on OR 212	172nd Ave	242nd Ave	Improve safety and reduce delay by making improvements as recommended in the Damascus Mobility Plan to the intersections of Sunnyside Rd/OR 212, Foster Rd/OR 212, 222nd Ave/OR 212 and 242nd Ave/OR 212.	\$24,500,000	2031 - 2045	2038	\$39,861,500	No

Clackamas County YOE Total
Target **\$214,256,672**
\$222,972,007

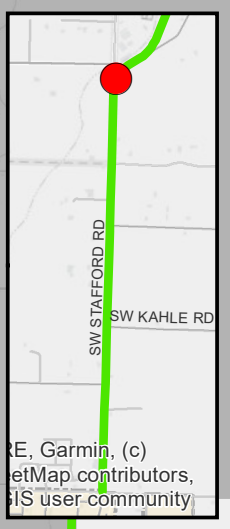
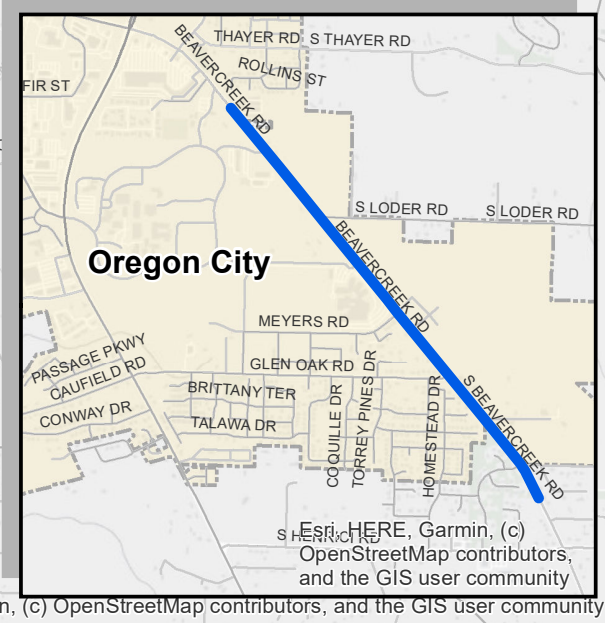
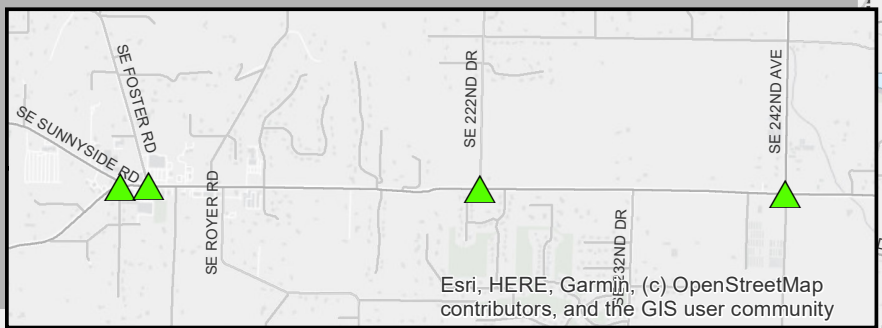
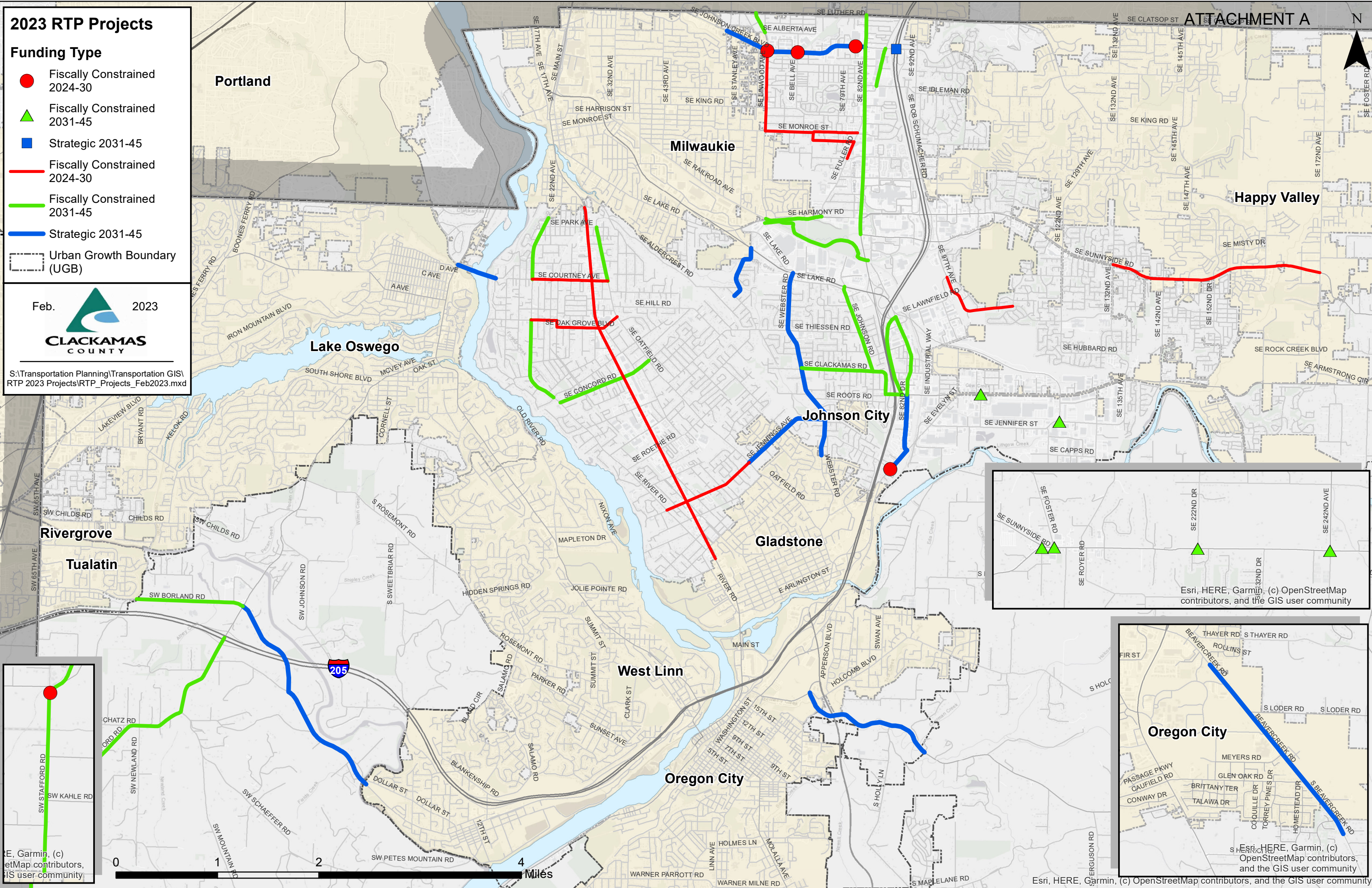
TSP ID	RTP Investment Category	Nominating Agency	Primary Facility Owner	RTP ID	Project Name	Start Location	End Location	Description	Base Estimated Cost (2023 dollars)	Time Period	YOE	Year of Expenditure Cost	2018 Financially Constrained project list
4026	Roads and Bridges	Clackamas County	Clackamas County	10001	Johnson Creek Blvd. Interchange Improvements	JCB/I-205 interchange	N/A	Increase safety at interchange by implementing proven safety counter measures, and improve interchange operations by adding a loop ramp and northbound on-ramp; realign southbound off-ramp and install dual right-turn lanes.	\$10,417,400	2030 - 2045	2038	\$16,949,110	Yes
1029	Roads and Bridges	Clackamas County	Clackamas County	10002	Johnson Creek Blvd. Improvements	55th Ave	82nd Ave.	Implement proven safety counter measures and widen to 3 lanes with bikeways and pedestrian facilities from 55th Ave to 82nd Ave to improve safety, improving freight access to industrial area and increasing accessibility for historically marginalized communities.	\$24,600,000	2031 - 2045	2038	\$40,024,200	Yes
1118 / 3142	Roads and Bridges	Clackamas County	Clackamas County	10057	Redland Road	Abernethy Road	UGB	Improve Redland Road to urban standards, adding left turn lanes at major intersections, upgrading two bridges and completing sidewalk gaps on west/south side between Abernethy and Anchor Way, north side between Anchor and Livesay, and both sides from Livesay to the	\$18,450,000	2031-2045	2038	\$30,018,150	Yes
2021	Active Transportation	Clackamas County	Clackamas County	11517	Jennings Ave	Oatfield Road	Webster Road	Improve safety by implementing proven safety counter measures, and widen to 2-lane urban minor arterial standard with bikeway and pedestrian facilities to fill existing system gaps.	\$20,000,000	2031 - 2045	2038	\$32,540,000	No
2025	Active Transportation	Clackamas County	Clackamas County	11518	Webster Rd	OR 224	Gladstone	Fill gaps in bikeways and pedestrian facilities, improve access to school, provide bike/ped safety counter measures at key intersections and improve ADA accessibility.	\$24,200,000	2031 - 2045	2038	\$39,373,400	No
1082	Active Transportation	Clackamas County	Clackamas County	11618	Borland Rd from Stafford Rd to West Linn City Limits	Stafford Rd	West Linn City Limits	Add paved shoulders. The project or a portion of the project is outside the designated urban growth boundary.	\$12,450,000	2031 - 2045	2038	\$20,256,150	No
3073	Active Transportation	Clackamas County	Clackamas County	11769	Rusk Rd Bike/Ped Improvements (TSAP)	Aldercrest Road	OR 224	Provide bicycle and pedestrian improvements on Rusk Road between Aldercrest Rd and OR 224 to improve safety, fill an important system gap and provide ADA accessibility improvements as needed.	\$8,550,000	2031 - 2045	2038	\$13,910,850	No
3004	Roads and Bridges	Clackamas County	Clackamas County	10023	82nd Dr. Improvements	Hwy 212	Strawberry Lane Intersection	Improve safety by implementing proven safety counter measures on known high crash corridor, widening to a consistent 4 lane cross section and include bike/ped improvement and ADA accessibility improvements as	\$25,800,000	2031 - 2045	2038	\$41,976,600	No
2022	Active Transportation	Clackamas County	Clackamas County	10085	Bike and Pedestrian Bridge across the Willamette River	Milwaukie City Limit	Abernethy Bridge	Provide an active transportation connection across the Willamette River by providing a new bike/ped bridge across the river	\$43,000,000	2031 - 2045	2038	\$69,961,000	No
	Roads and Bridges	Clackamas County	Clackamas County	12038	Beavercreek Rd Phase 3B	Meyers Rd	Urban Growth Boundary	Widen to four lanes and complete bike lane and sidewalks on both sides.	\$25,000,000	2031 - 2045	2038	\$40,675,000	Yes

Clackamas County YOE Total \$345,684,460
Target \$320,362,142

2023 RTP Projects

- Funding Type**
- Fiscally Constrained 2024-30
 - ▲ Fiscally Constrained 2031-45
 - Strategic 2031-45
 - Fiscally Constrained 2024-30
 - Fiscally Constrained 2031-45
 - Strategic 2031-45
 - Urban Growth Boundary (UGB)

Feb.  2023
CLACKAMAS COUNTY
 S:\Transportation Planning\Transportation GIS\RTP 2023 Projects\RTP_Projects_Feb2023.mxd



Esri, HERE, Garmin, (c) OpenStreetMap contributors, and the GIS user community

Esri, HERE, Garmin, (c) OpenStreetMap contributors, and the GIS user community

Esri, HERE, Garmin, (c) OpenStreetMap contributors, and the GIS user community

Esri, HERE, Garmin, (c) OpenStreetMap contributors, and the GIS user community