

# Clackamas County Circuit Courthouse Project



County Presentation 03.14.23





# Fast-Track Design & Construction Schedule

## DESIGN

July 2022 – September 2023

Validation, 100% SDs, 100% DD, 50% CDs, Final CDs

## PERMITTING

August 2022 – August 2023

Land Use, Engineering, Utilities, Building

## CONSTRUCTION

October 2022 – May 2025

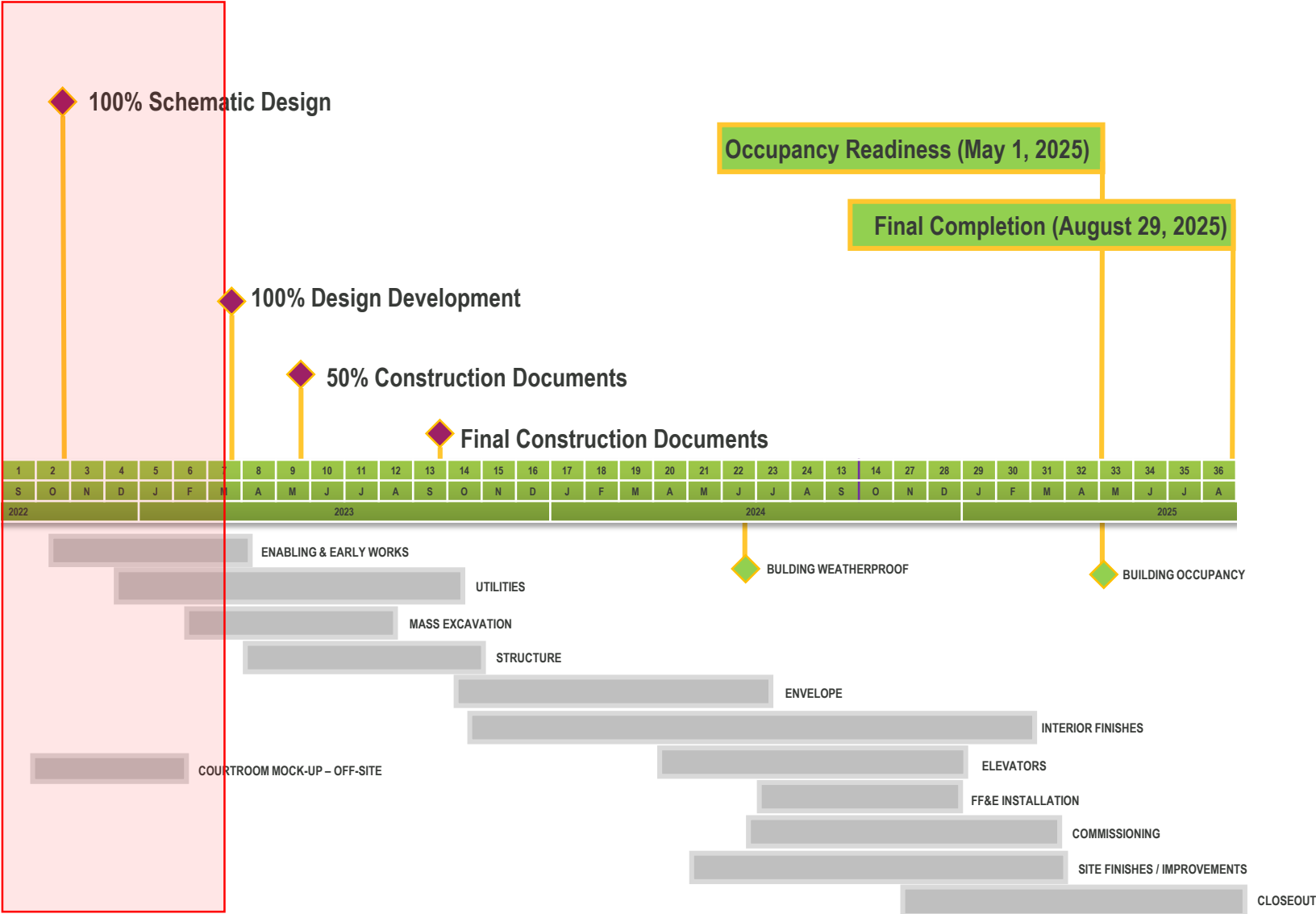
Enabling Work, Early Works, Structural, Balance of Building & Site

## CLOSEOUT

November 2024 – August 2025

Commissioning, FFE, Handover

# Design & Construction Milestones





**BRICK**



**WOOD ACCENTS**



**FIBER CEMENT**



**COMPOSITE METAL PANEL**

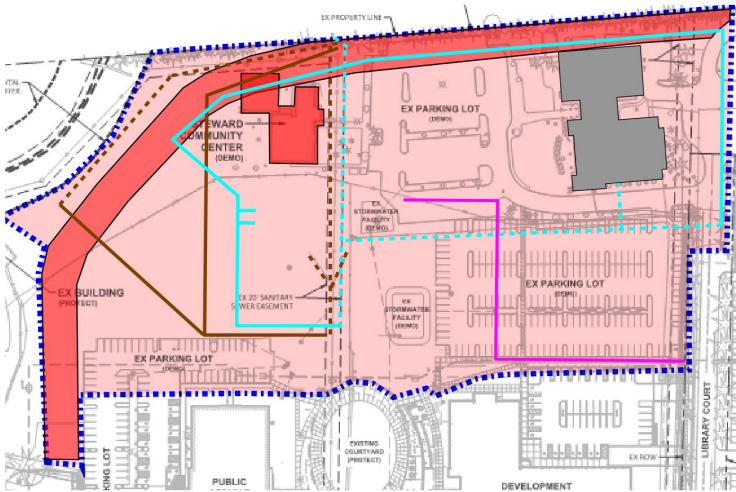


**METAL PANEL + PERFORATED SCREEN**

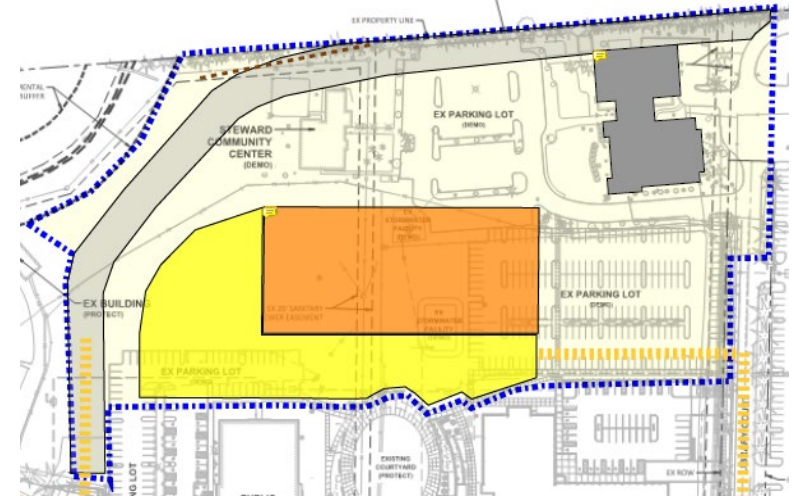


**CMU**

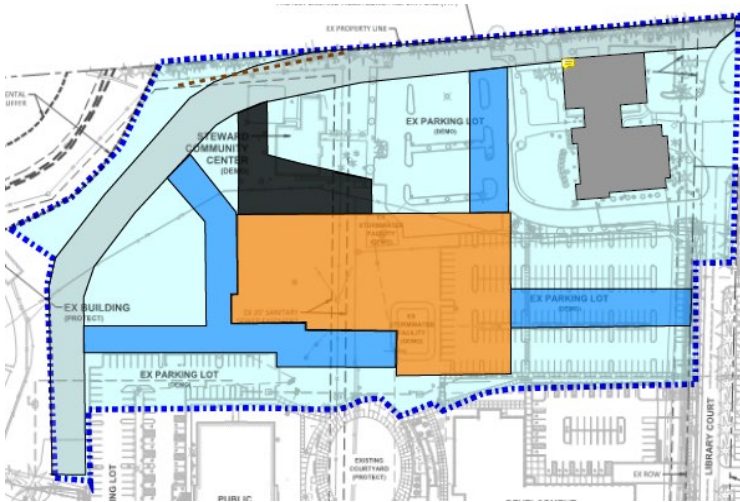
# Construction Phasing



**1 – ENABLING WORK**



**2 - EARLY WORKS**



**3, 4 - STRUCTURAL / BLDG & SITE IMPROVEMENTS**



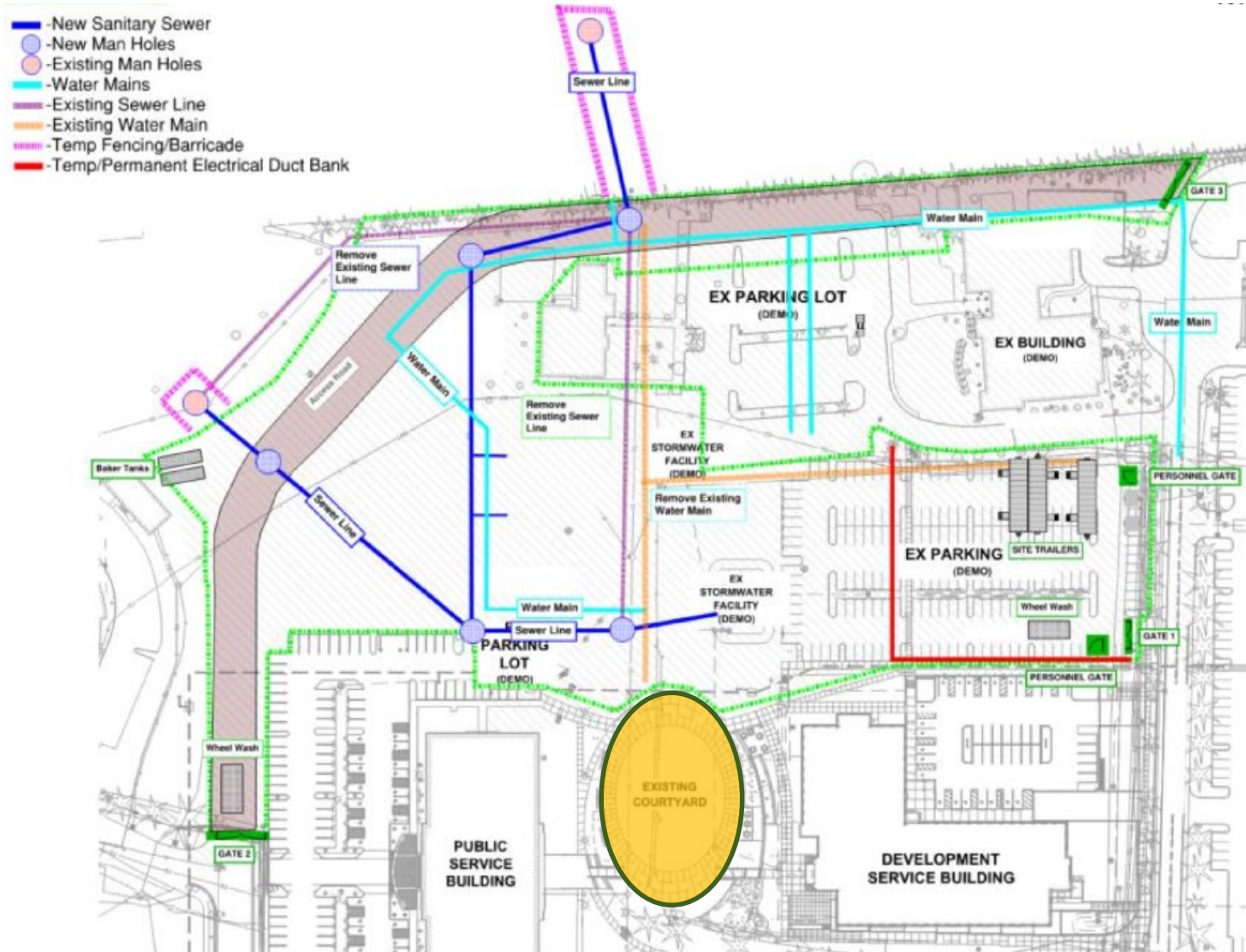
**5 – CLOSEOUT**

# Phase 1 - Enabling

- Baker Tanks
- Wheel Wash
- Access Road - Brown
- Demo

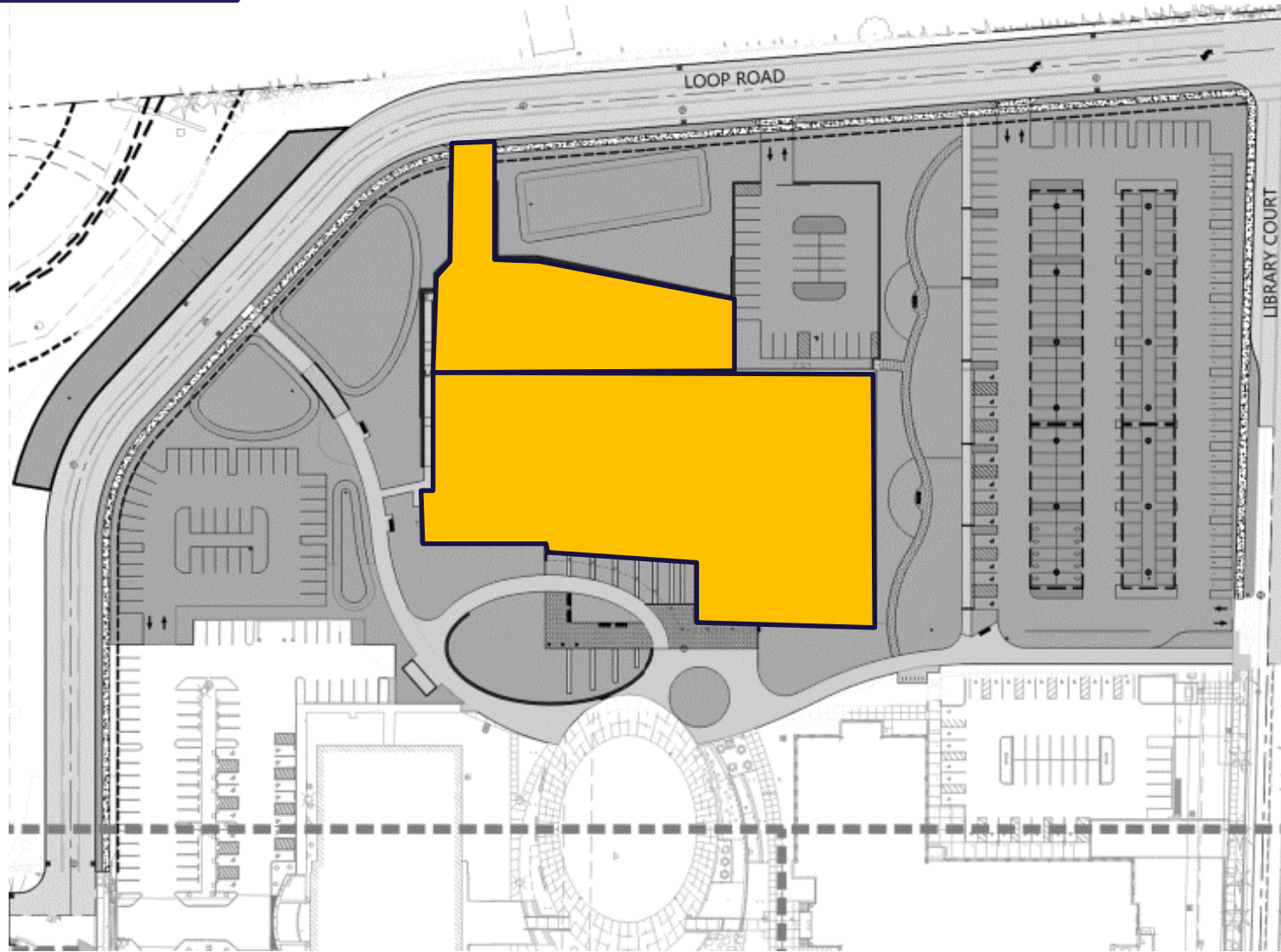


# Phase 2 – Early Works

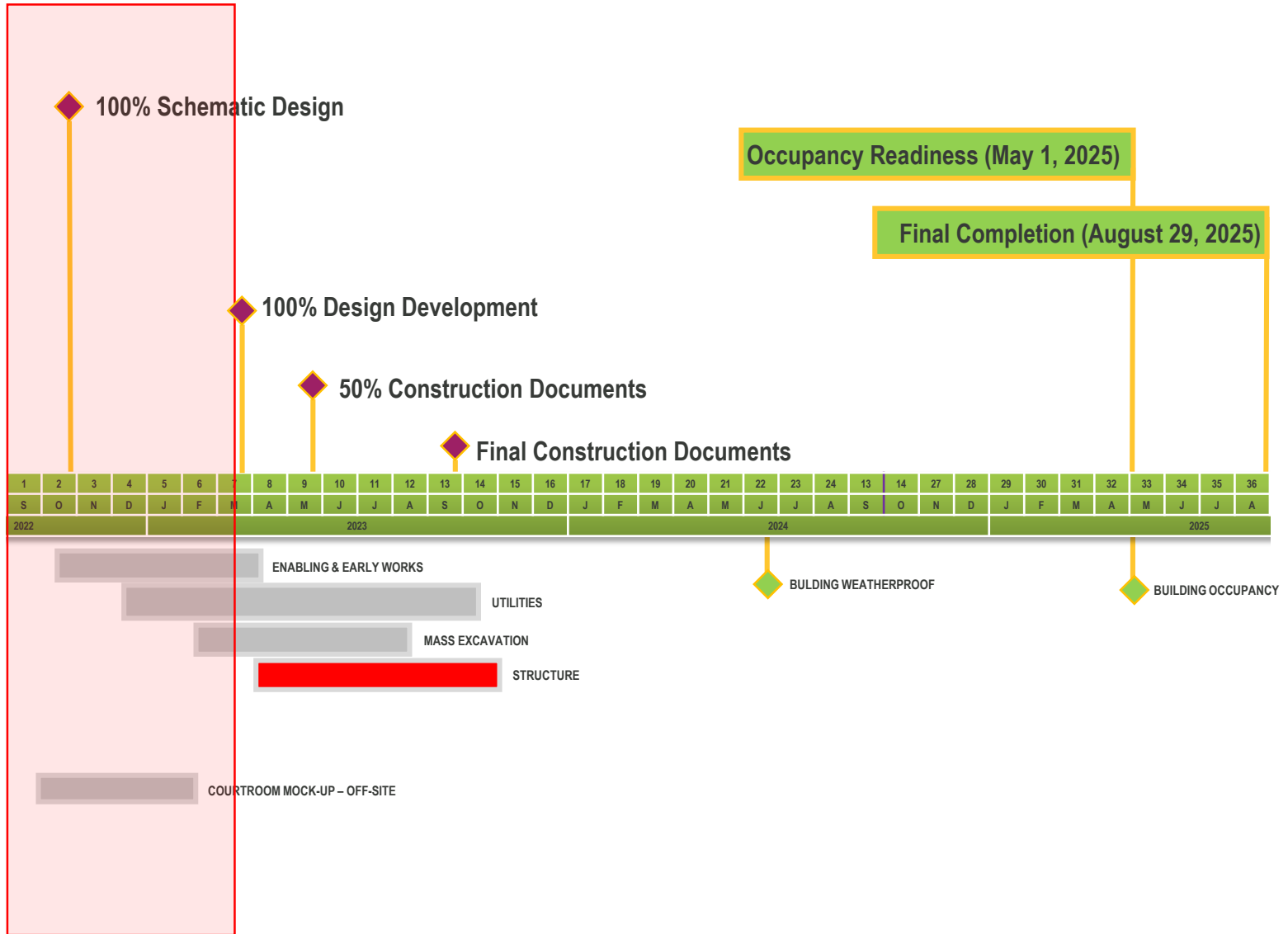




# Phase 2 - Mass Excavation



# What's Next?



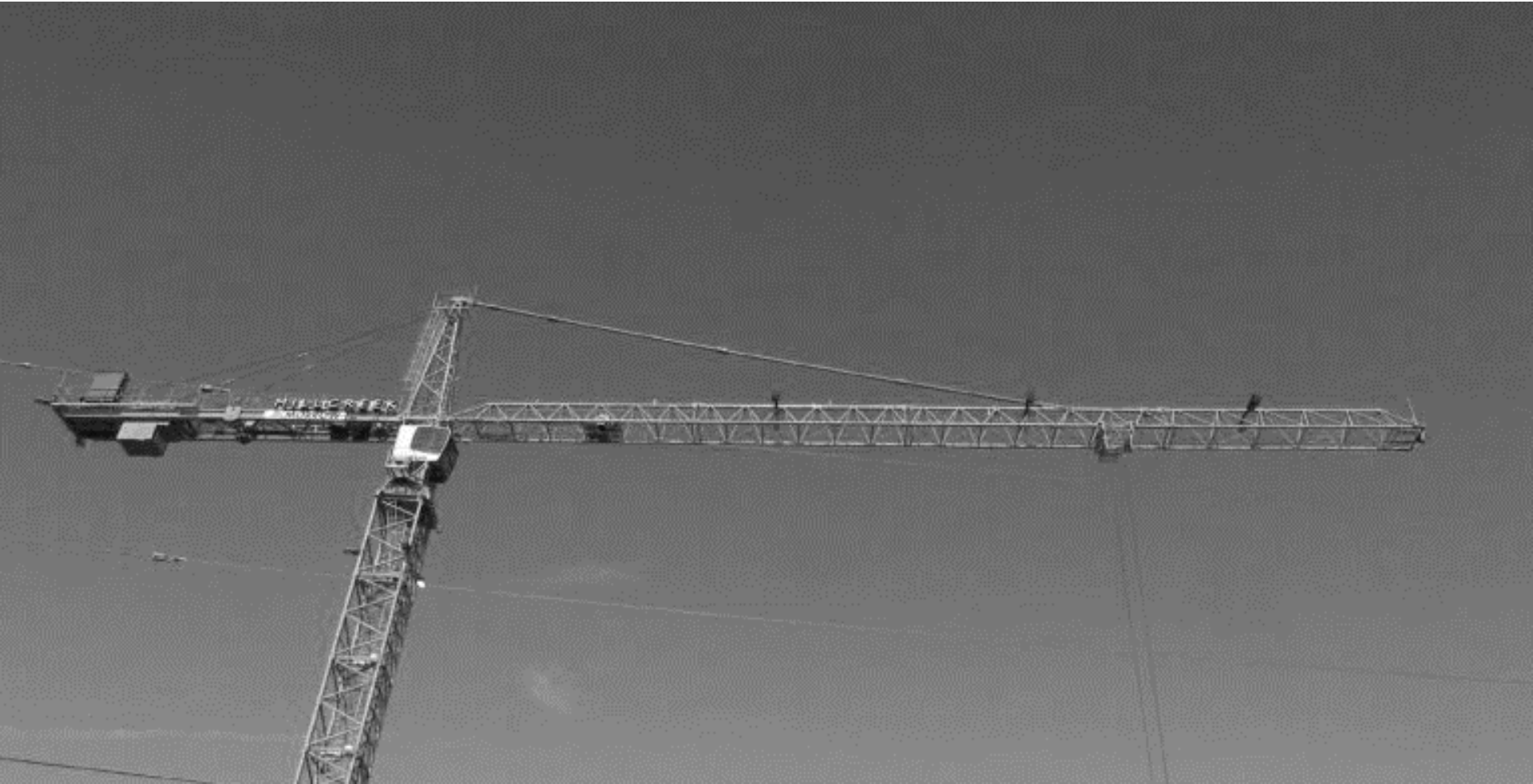
# Phase 3 – Structural

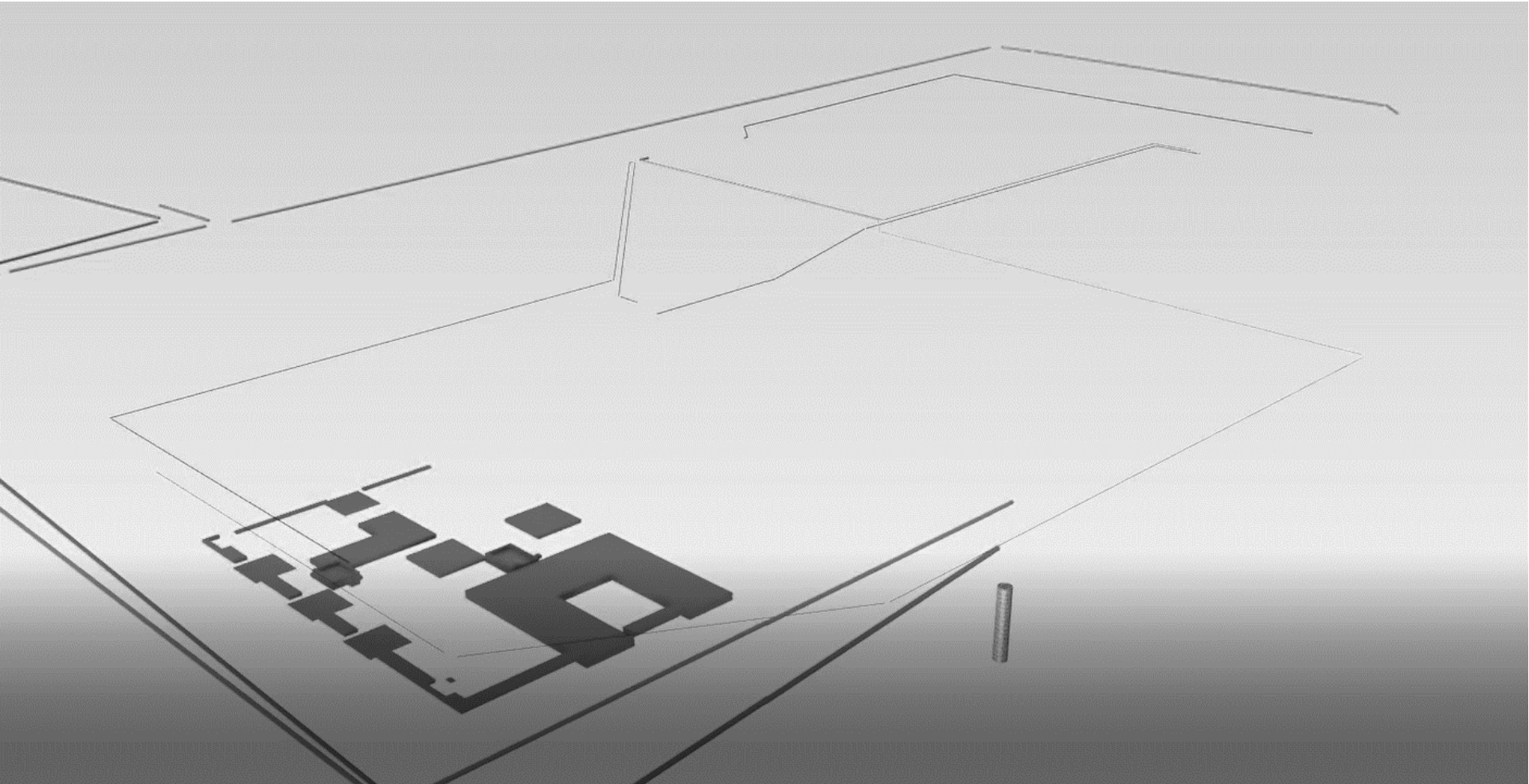
---



## Phase 3 – Tower Crane

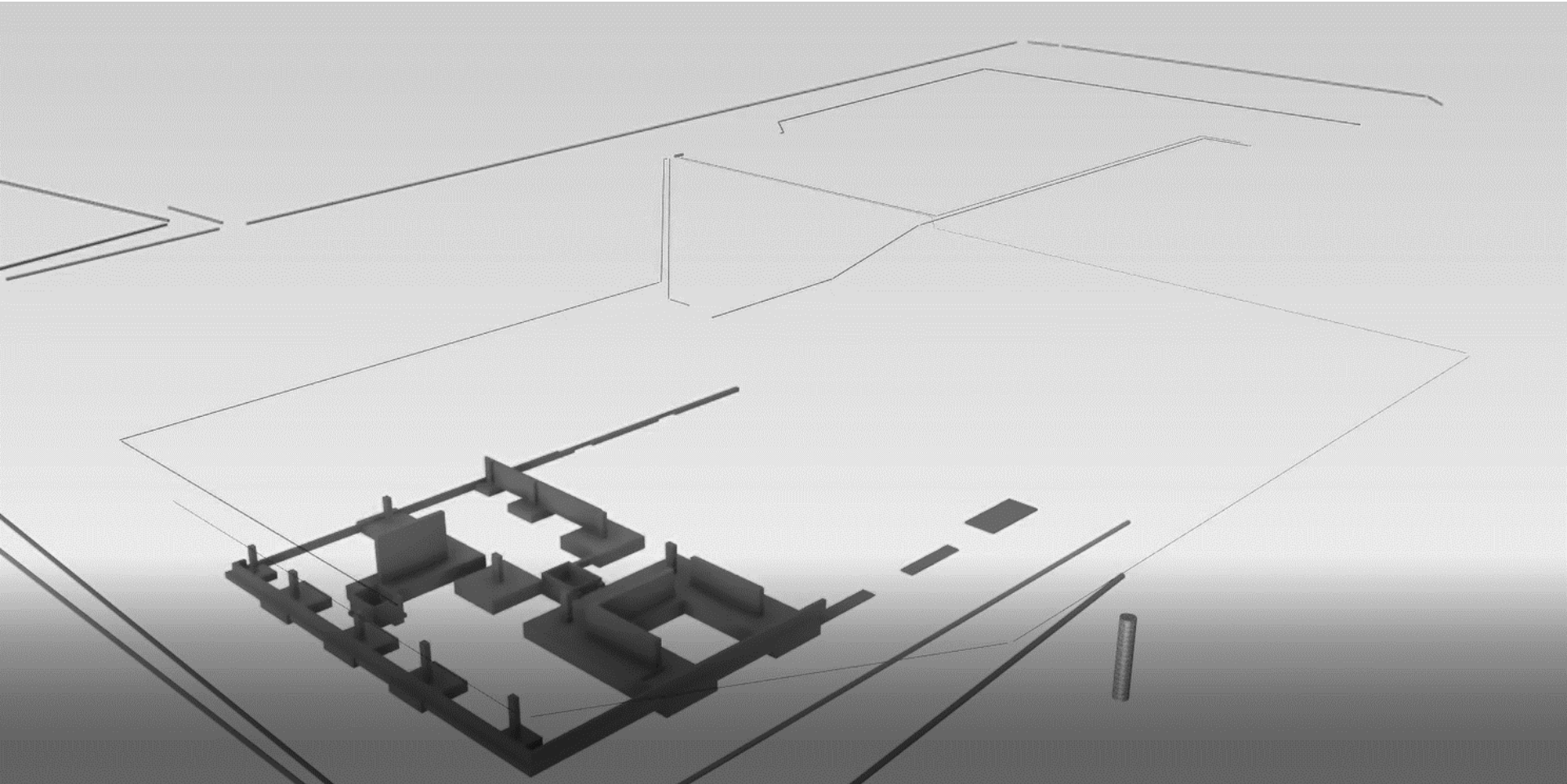
---





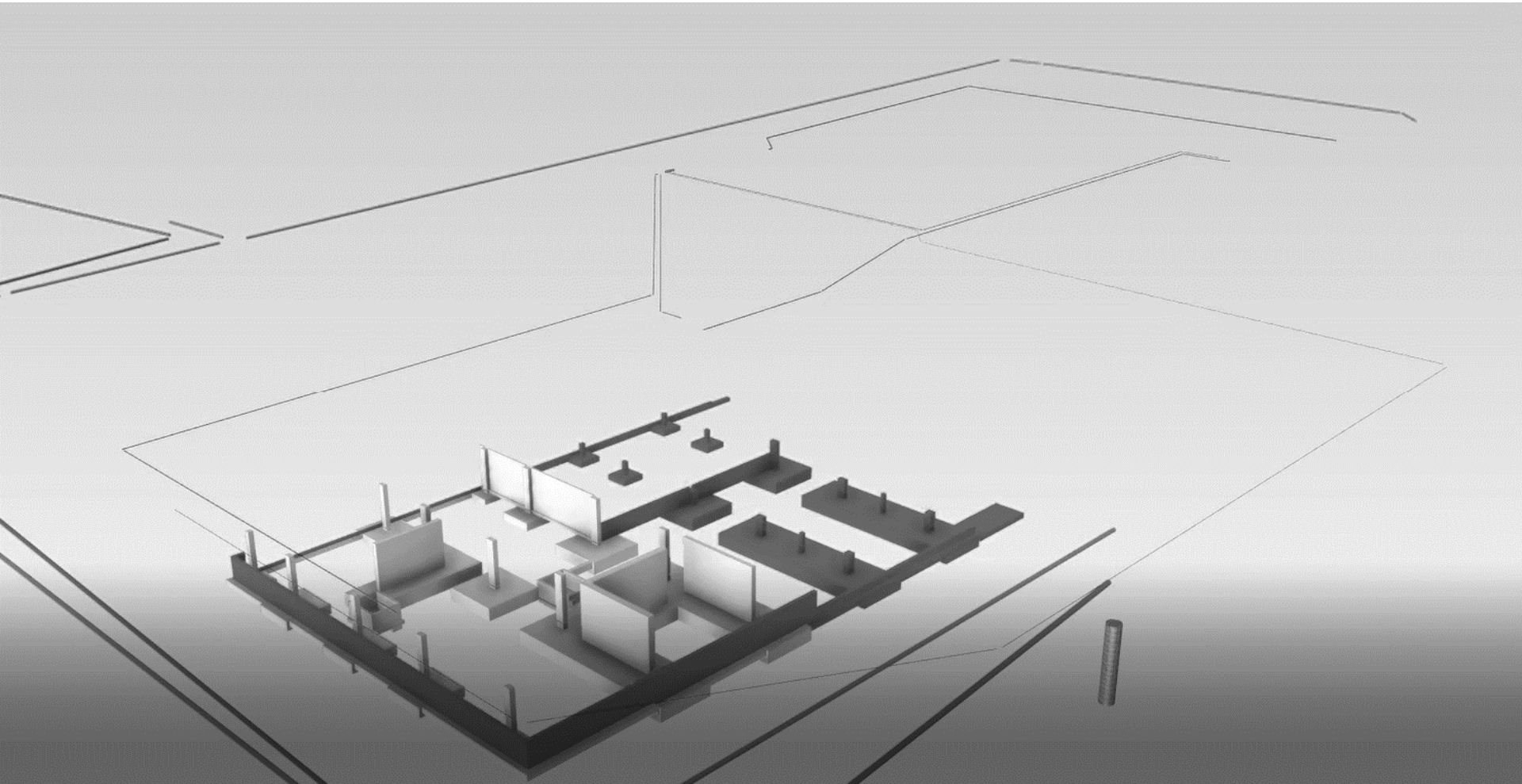
# Phase 3 – Structural

---



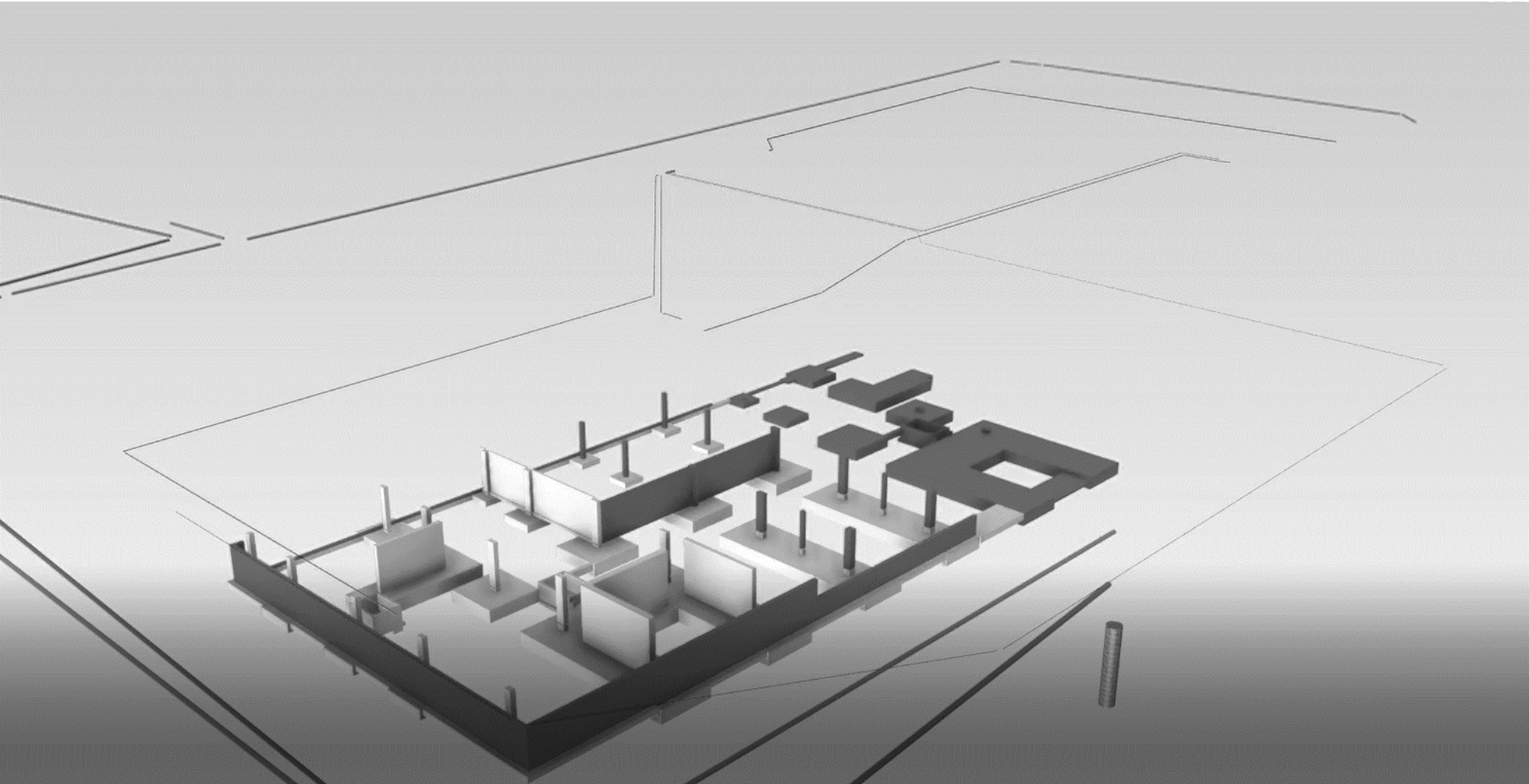
# Phase 3 – Structural

---



# Phase 3 – Structural

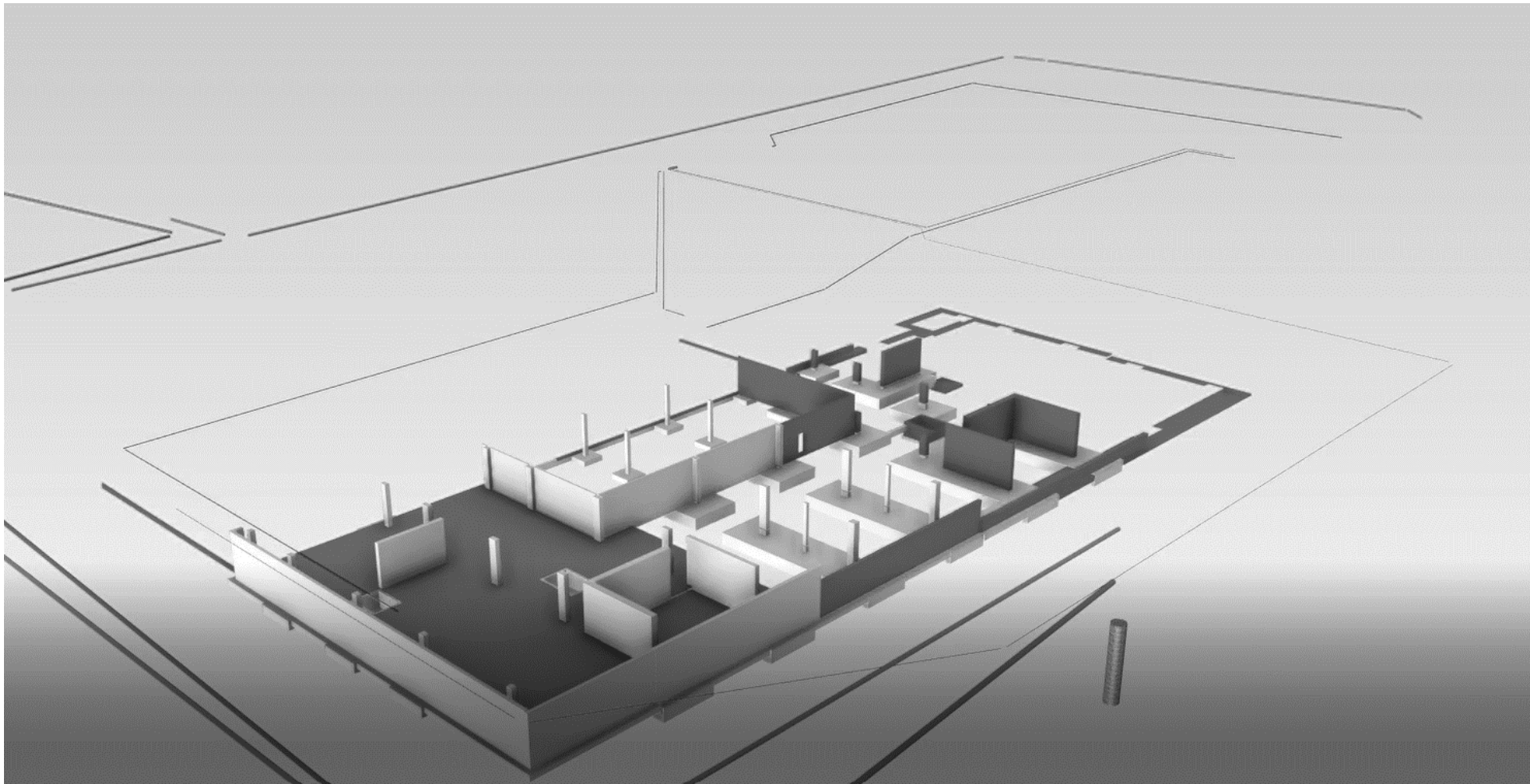
---





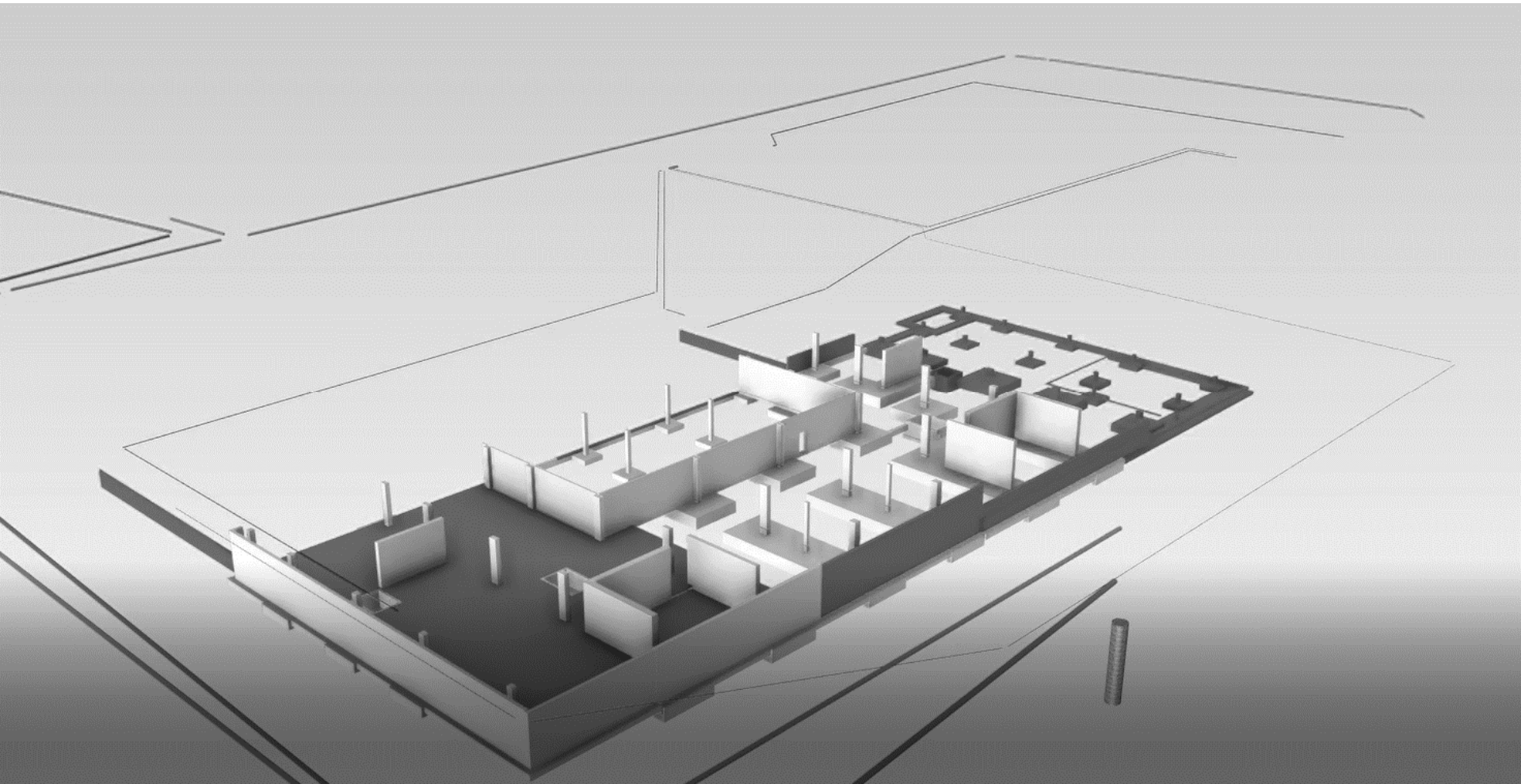
# Phase 3 – Structural

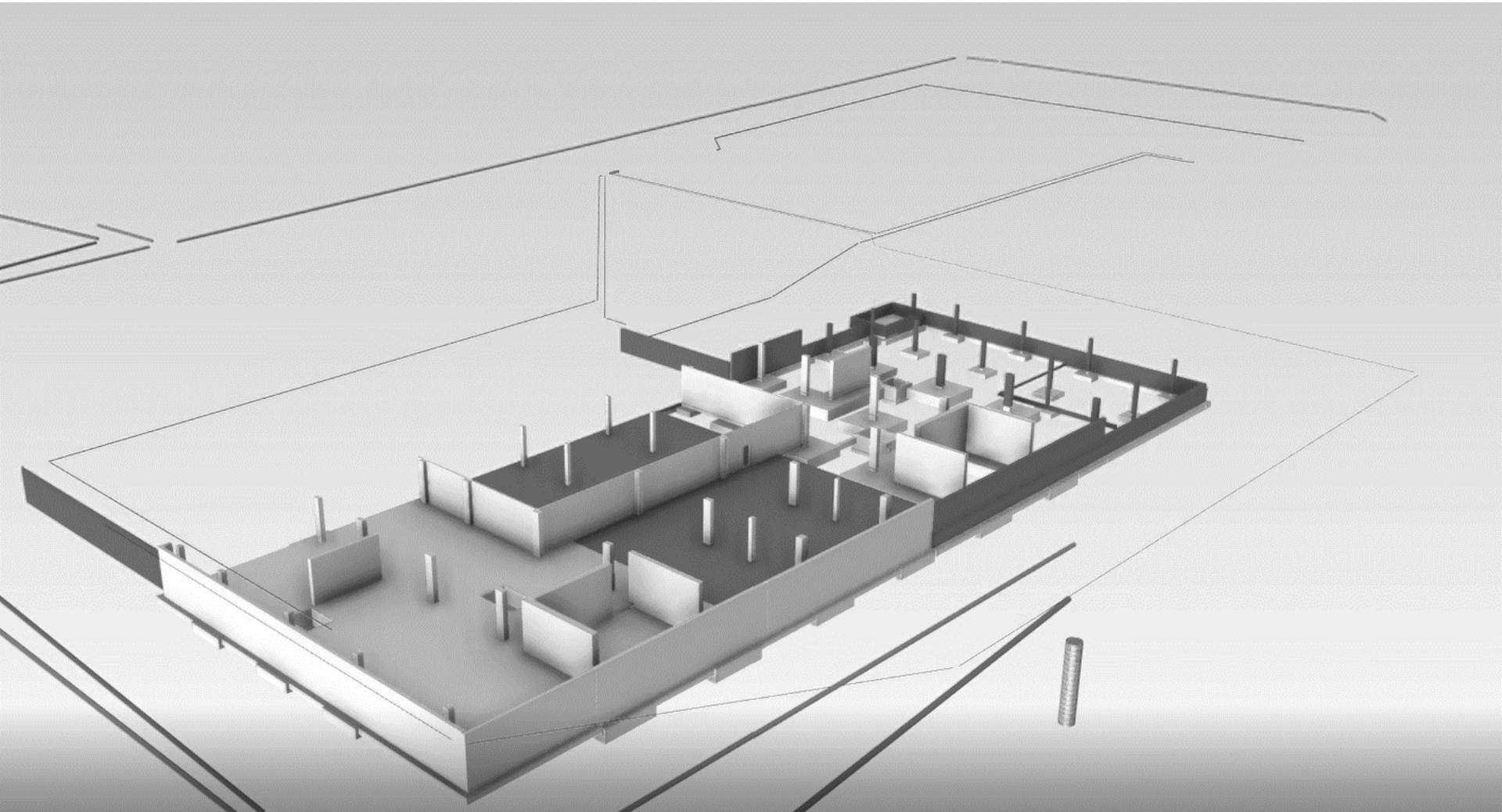
---

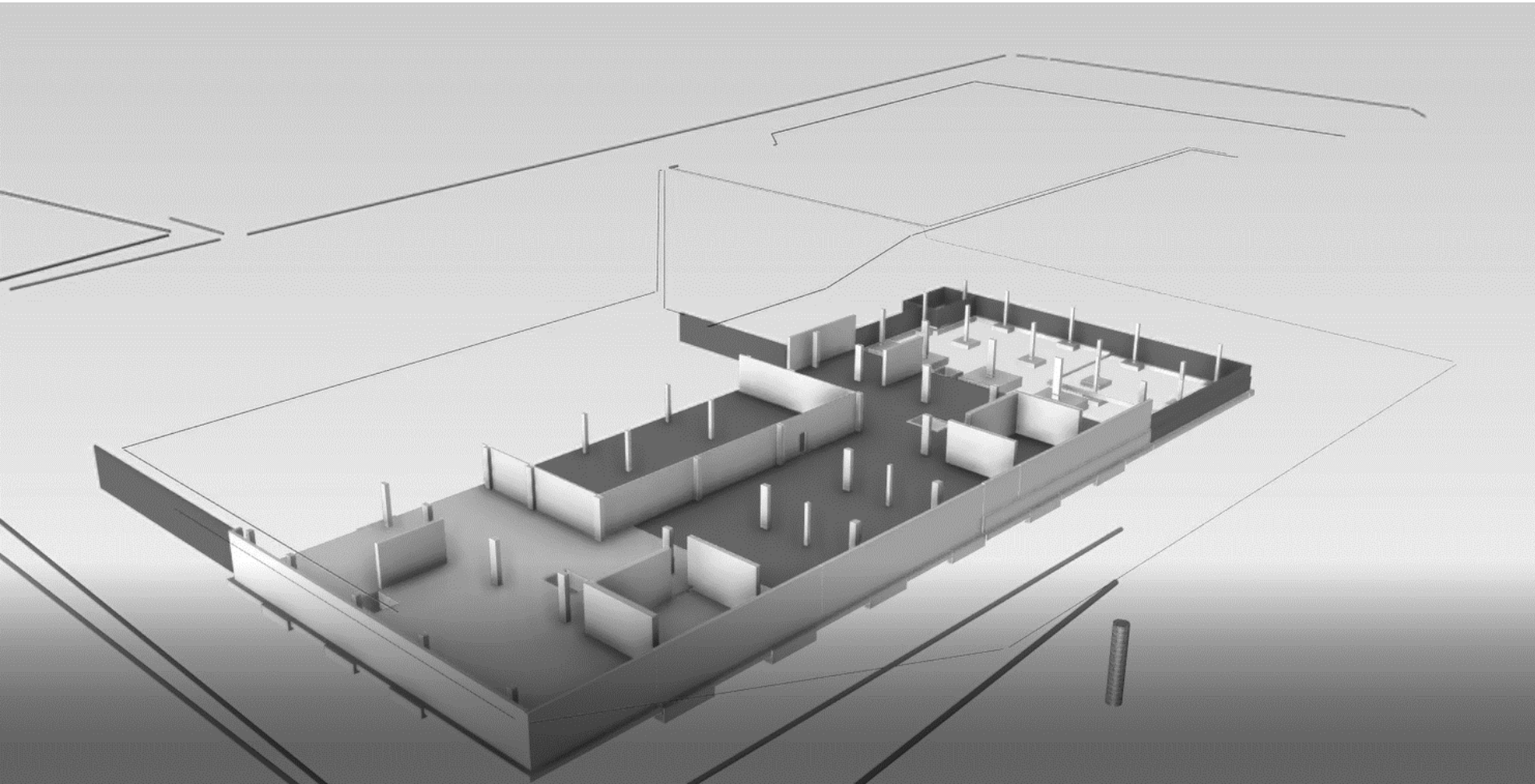


# Phase 3 – Structural

---

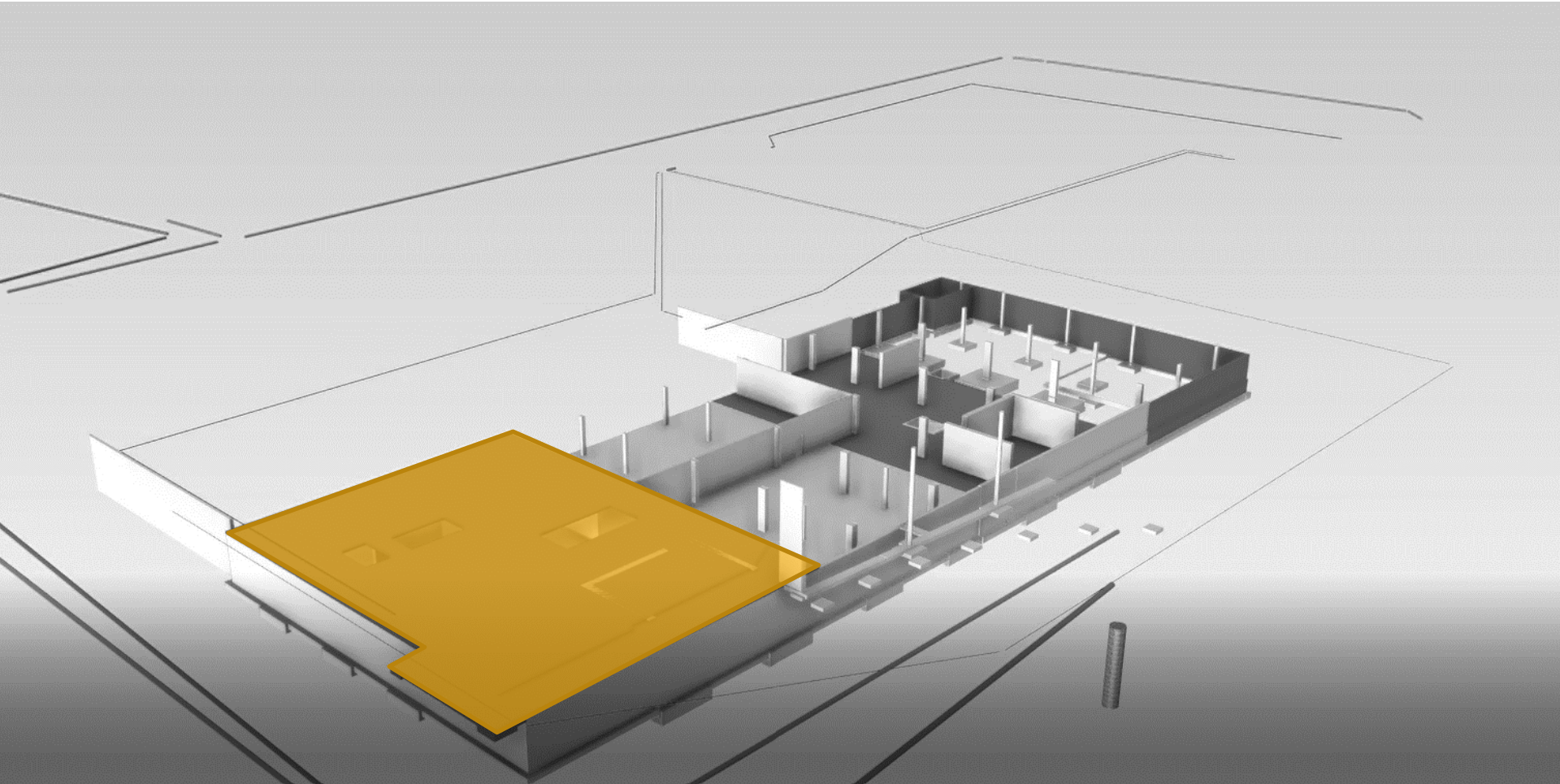






# Phase 3 – Structural

---



# Clackamas County Circuit Courthouse Project



County Presentation 03.14.23

