



**Clackamas County
Sheriff's Office**

**Crime
Report
2012**



Analysis of Crimes in Clackamas County

2012

Prepared by the

**Clackamas County Sheriff's Office
Crime Analysis Unit**

2223 Kaen Road • Oregon City, Oregon 97045 •
(503) 785-5088 • www.clackamas.us/sheriff

Craig Roberts, Sheriff
David Kirby, Undersheriff
Matt Ellington, Undersheriff
Shara VanMeter, Crime Analyst

Prepared August 2013

"Working together to make a difference"



CRAIG ROBERTS, Sheriff





Table of Contents

Clackamas County at a Glance	4
Map of Patrol Districts	5
Population Totals	6
Reports Processed	7
Are Crimes Up or Down?.....	8
5-Year Population & Crime-Rate History	9
All Crimes Reported	10-11
All Crimes Reported by Patrol District	12-13
Crimes by Type Graph.....	14
Crimes Reported by Month Graph.....	14
Clackamas County Jail	15
Stolen Vehicles by Patrol District.....	16
Stolen Vehicles: 2012 by Month	17
Stolen Vehicles: 10-Year History	17
Towed Vehicles by Year.....	18
Recovered Stolen Vehicles.....	18-19
Calls for Service	20-23
Property Room	24
INTERCEPT	25
S.W.A.T.....	26
Search & Rescue.....	27
Traffic.....	28
DUII Arrests	29
For More Information	30



On the cover:
 Inside the
 Clackamas
 County Jail.
 Photo by Patrick
 Sherman.

Clackamas County at a glance

Clackamas County, named for the resident Clackamas Indians, was established July 5, 1843. Oregon City, the county seat, was the first incorporated city west of the Rockies, the first capital of the territorial government in 1848 and the site of the first state legislative session.

The County encompasses 1,893 square miles — well over a million acres. It ranks 18th in size and third in the state of Oregon for total population, with an estimated population of 381,680 people. About 47 percent of the population lives in urban areas, with the remaining proportion in rural areas and towns. The largest cities in the county are Lake Oswego, with a population of 36,770; Oregon City, with a population of 32,500; West Linn, with a population of 25,370; and Milwaukie, with a population of 20,435.

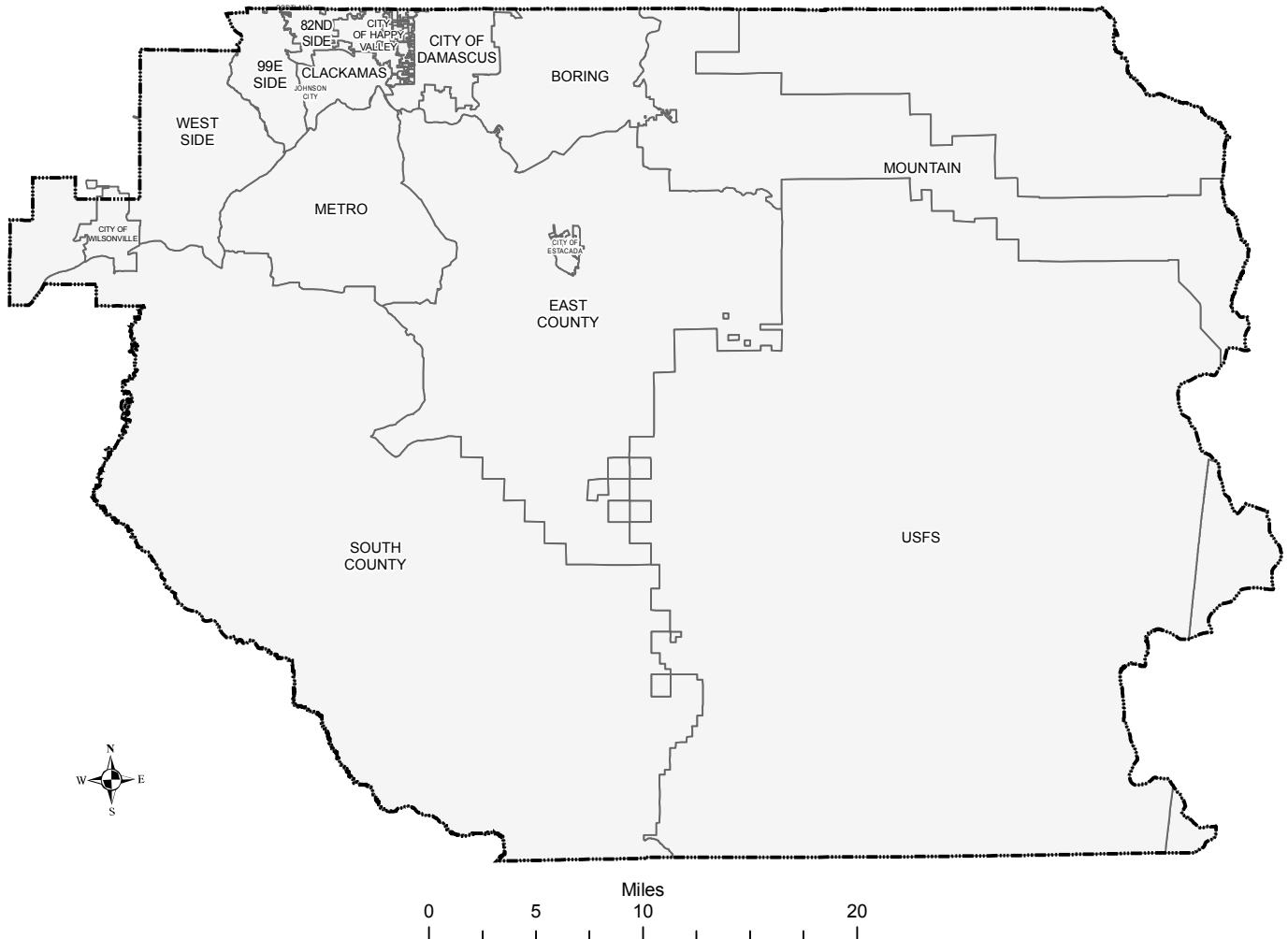


Clackamas County is located in the northern Willamette Valley of western Oregon. Hood River and Wasco Counties bound the county on the east, with Multnomah County sitting to the north. Marion County borders the south and also on the west along with Yamhill and Washington Counties. Butte Creek forms most of the western boundary, while the eastern boundary generally follows the crest of the Cascade Mountains.

From an elevation at Oregon City of 55 feet, Clackamas County rises to 11,235 feet at the peak of Mt. Hood on its northeastern boundary — the highest point in the state. Forest resources, lakes, rivers and streams provide numerous opportunities for hunting and fishing, as well as camping and other forms of recreation. Special points of scenic and historic interest are Willamette Falls, the McLoughlin House, Lake Oswego, Wilhoit Mineral Springs, Mt. Hood and Timberline Lodge.

Patrol Districts

Clackamas County Sheriff's Office



Clackamas County Population Totals

Updated 02/07/13

Portland State University Population Research Center: <http://www.pdx.edu/prc/>

**The 2010 population figures have been updated based on Portland State University's revisions after the 2010 census

Area	2003	2004	2005	2006	2007	2008	2009	2010**	2011	2012
Clackamas Co.	353,450	356,250	361,300	367,040	372,270	376,660	379,845	376,780	378,480	381,680

Incorporated Cities										
Canby	13,910	14,110	14,385	14,705	15,140	15,165	15,230	15,830	15,830	15,865
Damascus*			9,380	9,670	9,775	9,975	9,985	10,540	10,575	10,585
Estacada*	2,440	2,450	2,480	2,580	2,695	2,820	2,865	2,730	2,850	2,850
Gladstone	11,790	12,140	12,170	12,210	12,200	12,215	12,215	11,495	11,495	11,495
Happy Valley*	6,370	6,640	7,275	9,210	10,380	11,455	11,465	14,100	14,330	14,965
Lake Oswego	35,860	35,930	36,075	36,350	36,335	36,590	36,755	36,620	36,725	36,770
Milwaukie	20,580	20,590	20,655	20,835	20,920	20,915	20,920	20,290	20,400	20,435
Molalla	5,800	5,930	6,395	6,830	6,830	7,590	7,590	8,110	8,110	8,110
Oregon City	28,100	28,370	28,965	29,540	30,060	30,405	30,470	31,995	32,220	32,500
Sandy	6,200	6,360	6,645	7,070	7,595	8,005	8,205	9,665	9,780	9,880
West Linn	23,820	23,970	24,080	24,180	24,180	24,400	24,400	25,150	25,250	25,370
Wilsonville*	15,880	16,250	16,510	16,885	17,360	17,940	18,020	19,525	19,565	20,515
Total:	170,750	172,740	185,015	190,065	193,470	197,475	198,120	206,050	207,130	209,340

* Contract Cities patrolled by Clackamas County Sheriff's Office

Incorporated Cities										
Contract Cities	24,690	25,340	35,645	38,345	40,210	42,190	42,335	46,895	47,320	48,915
Other Cities	146,060	147,400	149,370	151,720	153,260	155,285	155,785	159,155	159,810	160,425

Total Unincorporated Area Patrolled by CCSO (does not include Contract Cities)										2012
Patrol Area	182,700	183,510	176,285	176,975	178,800	179,185	181,725	170,730	171,350	172,340

Total Area Patrolled by CCSO (including Damascus, Estacada, Happy Valley & Wilsonville)										2012
Patrol Area	207,390	208,850	211,930	215,320	219,010	221,375	224,060	217,625	218,670	221,255

Population of Other County Areas of Interest (these are included in the CCSO patrol area above)										
Johnson City	630	630	630	675	675	675	680	565	565	565
Barlow	140	140	140	140	140	140	140	135	135	135
Rivergrove	320	340	350	350	350	350	350	350	375	420

Reports Processed

During 2012, the Clackamas County Sheriff's Office processed 56,714 reports that were entered into C.L.A.S.S. During 2011, the Sheriff's Office processed 57,255 reports. This is a decrease of 541 reports (or 0.9%) during 2012 compared to 2011.

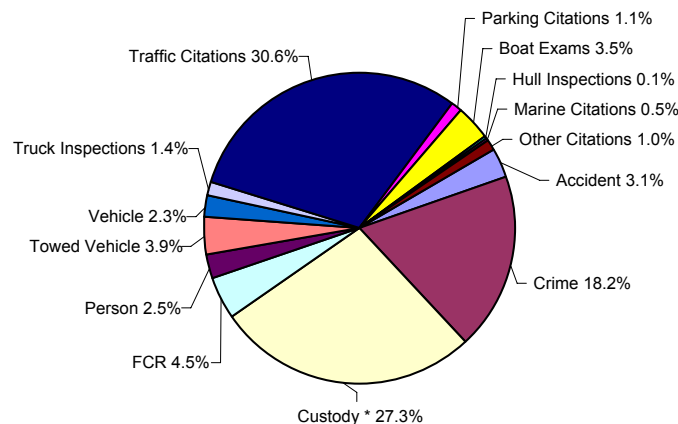
The average number of reports processed during the previous three years was 56,548.7. The 56,714 reports processed during 2012 is an increase of 165.3 reports or 0.3%.

This includes all reports (except for "specials" and follow-up reports) processed by the Sheriff's Office, including reports written in contract cities and courtesy reports written for other agencies. Some cases may include multiple report types. Each report is only counted once, regardless of the number of crimes or violations documented in the report. For the number of reported crimes, please see the "All Reported Crimes" chart on pages 10 and 11.

The chart below is a breakdown of report types and total number processed for each type during 2011, 2012 and the average for the previous three years of 2009, 2010, and 2011.

Report Type	2012	Monthly Average	2011	Monthly Average	3 Year Average	Monthly Average	% Change From 3 Yr Average
Accident	1,757	146.4	1,746	145.5	1,689.0	140.8	4.0%
Crime	10,309	859.1	10,959	913.3	11,168.0	930.7	-7.7%
Custody *	15,501	1,291.8	15,672	1,306.0	15,336.3	1,278.0	1.1%
FCR	2,544	212.0	2,220	185.0	2,035.7	169.6	25.0%
Person	1,391	115.9	1,424	118.7	1,323.3	110.3	5.1%
Towed Vehicle	2,201	183.4	2,103	175.3	2,574.3	214.5	-14.5%
Vehicle	1,282	106.8	955	79.6	1,090.0	90.8	17.6%
Truck Inspections	785	65.4	825	68.8	619.7	51.6	26.7%
Traffic Citations	17,371	1,447.6	15,170	1,264.2	15,215.0	1,267.9	14.2%
Parking Citations	644	53.7	1,011	84.3	1,007.7	84.0	-36.1%
Boat Exams	2,013	167.8	4,081	340.1	3,387.7	282.3	-40.6%
Hull Inspections	59	4.9	100	8.3	86.0	7.2	-31.4%
Marine Citations	270	22.5	199	16.6	275.7	23.0	-2.1%
Other Citations	587	48.9	790	65.8	740.3	61.7	-20.7%
Total:	56,714	4,726.2	57,255	4,771.3	56,548.7	4,712.4	0.3%

* Includes all custody reports processed by the Jail and Records, regardless of the arresting agency.

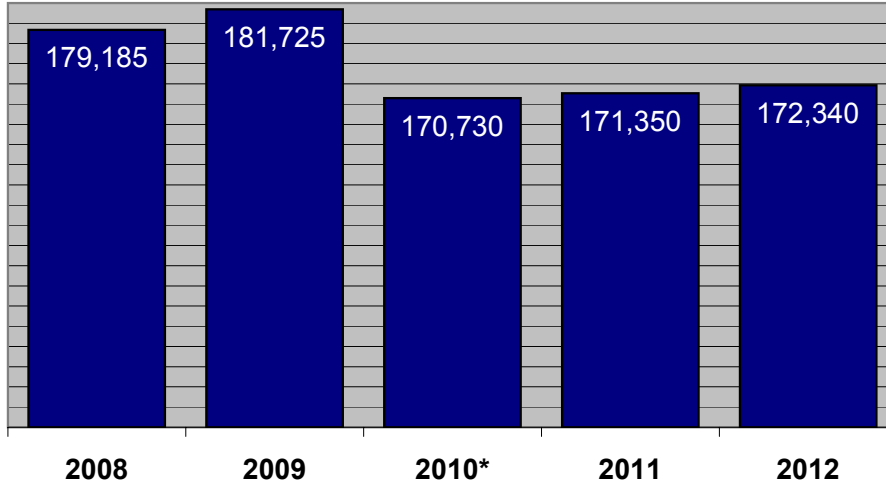


Are Crimes UP^{or} DOWN?

	2012 Change from 2011	2012 Change from 3-year Average
All Reported Crimes	-4.4%	-4.4%
Part I Crimes	-1.5%	-3.4%
Part II / Other Crimes	-7.3%	-5.5%
County Top Six Crimes	-4.0%	-5.0%
• Theft	-6.8%	-7.4%
• Criminal Mischief	-4.8%	-10.8%
• Burglary	8.0%	6.1%
• Stolen Vehicles	31.4%	20.6%
• Identity Theft	-15.7%	-13.6%
• Assault	-18.6%	-9.3%
Person Crimes	-3.9%	0.3%
Property Crimes	-3.4%	-5.6%
Behavioral Crimes	-7.7%	-2.9%

5-year Population & Crime-Rate History

Unincorporated Clackamas County Population

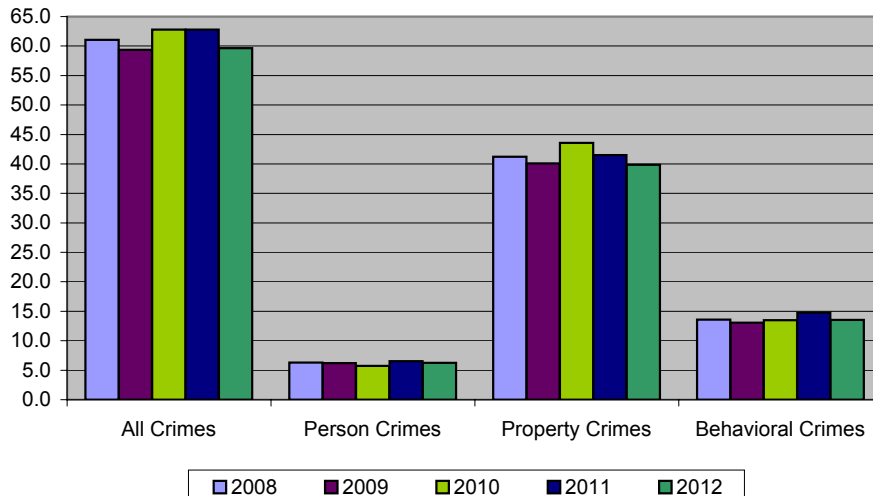


*2010 population was updated after Portland State University revised their numbers based on the 2010 census

Crime Rates Per 1,000 Population

Crime Type	2008	2009	2010	2011	2012
All Crimes	61.1	59.3	62.8	62.8	59.6
Person Crimes	6.3	6.2	5.7	6.5	6.2
Property Crimes	41.2	40.1	43.6	41.5	39.9
Behavioral Crimes	13.6	13.1	13.5	14.7	13.5

Crime Rates Per 1,000 Population: 2008-2012



All Crimes Reported

Part I Crimes		Type	2012	2011	3 Yr Avg. 2009/10/11
Arson	Pr		10	21	17.3
Assault, Aggravated	Pe		64	66	71.7
Burglary	Pr		849	786	800.0
Attempt Murder	Pe		6	0	4.7
Murder	Pe		9	2	2.7
Rape	Pe		42	28	37.3
Robbery	Pe		80	93	104.3
Theft (all)	Pr		3,628	3,891	3,918.2
Stolen Vehicles	Pr		510	388	423.0
Part I Totals:			5,198	5,275	5,379.2
Part II / Other Crimes		Type	2012	2011	3 Year Avg.
Assault, Simple	Pe		321	407	352.7
Child Abuse / Neglect	Pe		17	20	17.3
Crimes Against Family	Be		228	182	181.6
Criminal Mischief	Pr		760	798	852.3
Criminal Trespass	Be		166	233	172.7
Cruelty to Animals	Be		26	26	21.7
Disorderly Conduct	Be		53	83	55.7
Drug Charges (all)	Be		486	460	421.7
D.U.I.I.	Be		470	524	543.3
Forgery	Pr		206	248	213.0
Fraudulent Use of Credit Card	Pr		212	298	373.3
Harassment	Pe		261	223	208.0
Identity Theft	Pr		339	402	392.3
Kidnapping	Pe		11	5	9.3
Manslaughter/Neg. Homicide	Pe				1.0
Menacing	Pe		107	122	116.7
M.I.P. - Alcohol	Be		103	100	141.7
Negotiate a Bad Check	Pr		11	10	17.3
Offensive Littering	Be		21	30	30.3
Prostitution	Be		3	3	6.3
Public / Private Indecency	Be		6	10	9.3
Recklessly Endangering	Pe		41	46	32.0
Resisting Arrest	Be		18	18	13.3
Runaway Juveniles	Be		355	381	342.7
Sex Crimes (other)	Pe		16	24	27.0
Sexual Abuse	Pe		55	46	52.7
Sodomy	Pe		5	8	7.3
Strangulation	Pe		42	31	29.3
Unlawful Entry Into Motor Veh	Pr		345	267	270.7
Weapons Violations	Be		68	66	59.7
Crimes Not Listed Above	Be		329	411	402.0
Part II / Other Totals:			5,081	5,482	5,374.2
Total Crimes Reported			2012 10,279	2011 10,757	3 Year Avg. 10,753.4

All Crimes Reported

continued

Crime Types	2012	2011	3 Year Avg.
Person Crimes	1,077	1,121	1,074.0
Property Crimes	6,870	7,109	7,277.4
Behavioral Crimes	2,332	2,527	2,402.0

Recovered Stolen Vehicles	2012	2011	3 Year Avg.
Recovered Vehicles	375	262	318.7

County Top Six	2012	2011	3 Year Avg.
Theft	3,628	3,891	3,918.2
Criminal Mischief	760	798	852.3
Burglary	849	786	800.0
Stolen Vehicle	510	388	423.0
Identity Theft	339	402	392.3
Assault	385	473	424.4
Total:	6,471	6,738	6,810.2

Crimes Against Family	2012	2011	3 Year Avg.
Criminal Mistreatment	30	29	26.3
Custodial Interference	1	5	3.0
Violation of Restraining Order	197	131	152.3
Total:	228	165	181.6

Thefts by Type	2012	2011	3 Year Avg.
Theft I	620	704	720.3
Theft II	1,774	1,901	1,941.0
Theft III	1,013	1,275	1,047.0
Theft By Deception	27	30	31.0
Theft By Extortion		1	1.0
Theft By Receiving	7	12	11.3
Theft of Lost/Mislaid Property	60	70	60.3
Theft of Mail	79	53	69.3
Theft of Services	48	36	37.0
Total:	3,628	4,082	3,918.2

This only includes crimes reported to the Clackamas County Sheriff's Office within the Sheriff's Office's patrol districts. It does not include crimes reported in the contract cities of Damascus, Estacada, Happy Valley or Wilsonville. It also does not include "courtesy" crime reports for crimes occurring in other jurisdictions.

*Sex Crimes (other) includes Luring a Minor and Online Sexual Corruption of a Child, among other crimes. These two particular crimes are new crimes as of January 1, 2008 and are proactively investigated by the INTERCEPT task force. INTERCEPT detects online predators and arrests and prosecutes them before they meet vulnerable children in person.

2012 Crimes Reported by District

Part I Crimes	West	99E	82nd Ave	Clackamas	Boring	Mountain	Metro	East	South	USFS / BLM	Total
Arson		5	2				2		1		10
Assault, Aggravated		12	23	11	3	5	2	5	2	1	64
Burglary	32	167	138	112	58	81	50	90	120	1	849
Attempt Murder			3						3		6
Murder	3	2	3			1					9
Rape	2	7	10	9	4	1	2	4	1	2	42
Robbery	1	10	56	7	1	4	1				80
Theft (all)	66	541	1,632	751	102	127	98	127	155	29	3,628
Stolen Vehicles	5	86	180	117	19	31	7	31	32	2	510
Part I Totals:	109	830	2,047	1,007	187	250	162	257	314	35	5,198
Part II / Other Crimes	West	99E	82nd	Clack	Boring	Mtn.	Metro	East	South	USFS	Total
Assault, Simple	5	63	77	55	17	23	18	31	29	3	321
Child Abuse / Neglect		2	5	7		1	1	1			17
Crimes Against Family	20	41	29	44	18	11	10	23	31	1	228
Criminal Mischief	17	180	203	146	32	40	32	44	56	10	760
Criminal Trespass	4	18	84	23	5	6	8	6	11	1	166
Cruelty to Animals		2	1	3	3	4	3	6	4		26
Disorderly Conduct		14	22	7	2	3	1	1	3		53
Drug Charges (all)	7	117	183	87	11	7	23	29	15	7	486
D.U.I.	17	94	93	72	44	39	23	41	42	5	470
Forgery	5	37	81	47	2	2	9	10	13		206
Fraudulent Use of Credit Card	5	31	97	35	5	7	7	13	10	2	212
Harassment	6	68	63	42	8	12	15	21	25	1	261
Identity Theft	16	49	101	94	17	12	13	17	20		339
Kidnapping	1	3	4	2		1					11
Manslaughter/Neg. Homicide											0
Menacing	3	27	15	18	6	12	7	12	6	1	107
M.I.P. - Alcohol	7	9	27	29	6	11	1	2	2	9	103
Negotiate a Bad Check				7	2	2					11
Offensive Littering	1	2	7	3	5		1		2		21
Prostitution			3								3
Public / Private Indecency		2	1	2					1		6
Recklessly Endangering	1	3	2	9	10	7	1	2	5	1	41
Resisting Arrest		4	9	2			1	1	1		18
Runaway Juveniles	2	58	103	89	19	24	11	11	38		355
Sex Crimes (other)		1	4	3		1	4	2	1		16
Sexual Abuse	1	11	11	8	2	6	5	4	6	1	55
Sodomy		1	2	1	1						5
Strangulation		8	10	8	3	2	2	5	4		42
Unlawful Entry Into Motor Veh	11	59	111	92	6	24	12	5	20	5	345
Weapons Violations	3	13	21	10	2	4		12	3		68
Crimes Not Listed Above	2	61	145	42	8	8	18	16	25	4	329
Part II / Other Totals:	134	978	1,514	987	234	269	226	315	373	51	5,081
Total Crimes Reported	West	99E	82nd	Clack	Boring	Mtn.	Metro	East	South	USFS	Total
	243	1,808	3,561	1,994	421	519	388	572	687	86	10,279
% of Grand Total:	2.4%	17.6%	34.6%	19.4%	4.1%	5.0%	3.8%	5.6%	6.7%	0.8%	

2012 Crimes Reported by District

continued

Crime Types	West	99E	82nd	Clack	Boring	Mtn.	Metro	East	South	USFS	Total
Person Crimes	23	218	288	180	55	76	58	87	82	10	1,077
Property Crimes	157	1,155	2,545	1,401	243	326	230	337	427	49	6,870
Behavioral Crimes	63	435	728	413	123	117	100	148	178	27	2,332

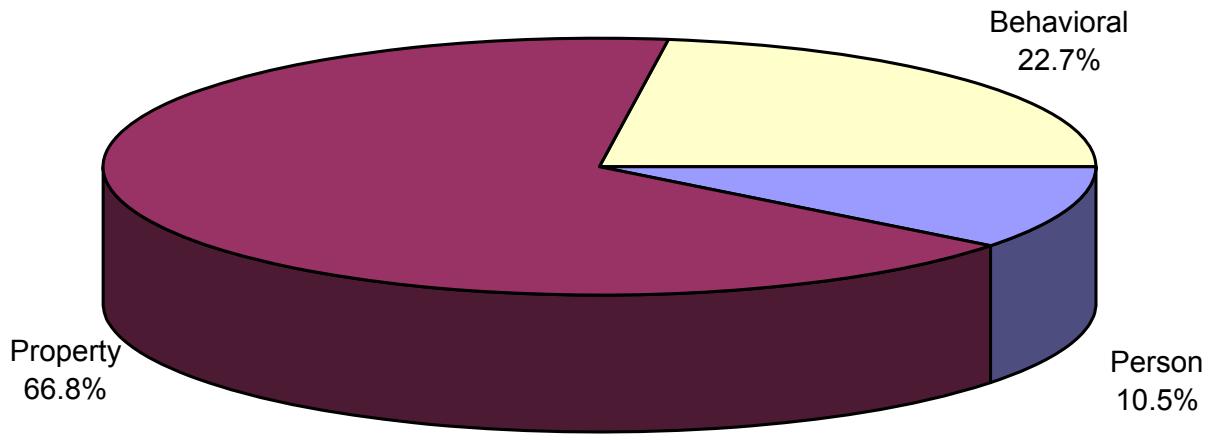
Recovered Vehicles	13	61	98	77	26	19	10	36	27	8	375
---------------------------	----	----	----	----	----	----	----	----	----	---	-----

County Top Six	West	99E	82nd	Clack	Boring	Mtn.	Metro	East	South	USFS	Total
Theft	66	541	1,632	751	102	127	98	127	155	29	3,628
Criminal Mischief	17	180	203	146	32	40	32	44	56	10	760
Burglary	32	167	138	112	58	81	50	90	120	1	849
Stolen Vehicle	5	86	180	117	19	31	7	31	32	2	510
Identity Theft	16	49	101	94	17	12	13	17	20	0	339
Assault	5	75	100	66	20	28	20	36	31	4	385
Total:	141	1,098	2,354	1,286	248	319	220	345	414	46	6,738

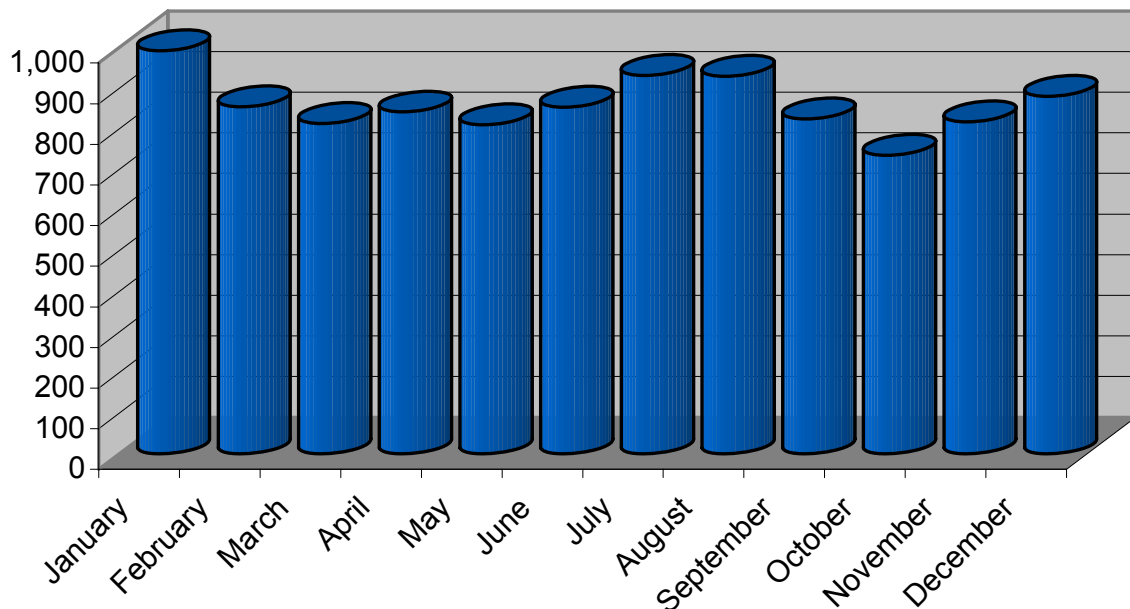
Crimes Against Family	West	99E	82nd	Clack	Boring	Mtn.	Metro	East	South	USFS	Total
Criminal Mistreatment	2	5	4	7	2	3	1	3	3		30
Custodial Interference				1							1
Viol. Restraining Order	18	36	25	36	16	8	9	20	28	1	197
Total:	20	41	29	44	18	11	10	23	31	1	228

Types of Thefts	West	99E	82nd	Clack	Boring	Mtn.	Metro	East	South	USFS	Total
Theft I	19	96	195	114	22	44	34	36	53	7	620
Theft II	28	273	773	425	50	58	41	54	54	18	1,774
Theft III	11	135	580	174	16	18	16	24	36	3	1,013
Theft by Deception		7	12	3	1	1		1	2		27
Theft by Extortion											0
Theft by Receiving		3	3	1							7
Theft of Lost/Missing	1	15	21	12	2	3	2	1	2	1	60
Theft of Mail	7	10	9	18	11	1	5	11	7		79
Theft of Services		2	39	4		2			1		48
Total:	66	541	1,632	751	102	127	98	127	155	29	3,628

All Crimes Reported by Type: 2012



All Crimes Reported by Month: 2012



Clackamas County Jail

There were 14,390 people booked into the Clackamas County Jail in 2012. 10,873 (75.6%) of those people were male and 3,513 (24.4%) were female. This includes new bookings during 2012 only and does not account for people who were already in custody prior to the beginning of the year.

Intakes

	2012	2011	3 Year Avg. 2009/10/11
Total	14,390	14,257	13,856.3
Male	10,873 75.6%	10,862 76.2%	10,672.3 77.0%
Female	3,513 24.4%	3,377 23.7%	3,184.0 23.0%

Some records were expunged before this report was written, so the number of male and female bookings does not add up to the total number of bookings.

Monthly Average	1,199.2	1,188.1	1,154.7
Daily Average	39.4	39.1	38.0
Repeat Offenders	71.2%	71.4%	71.3%

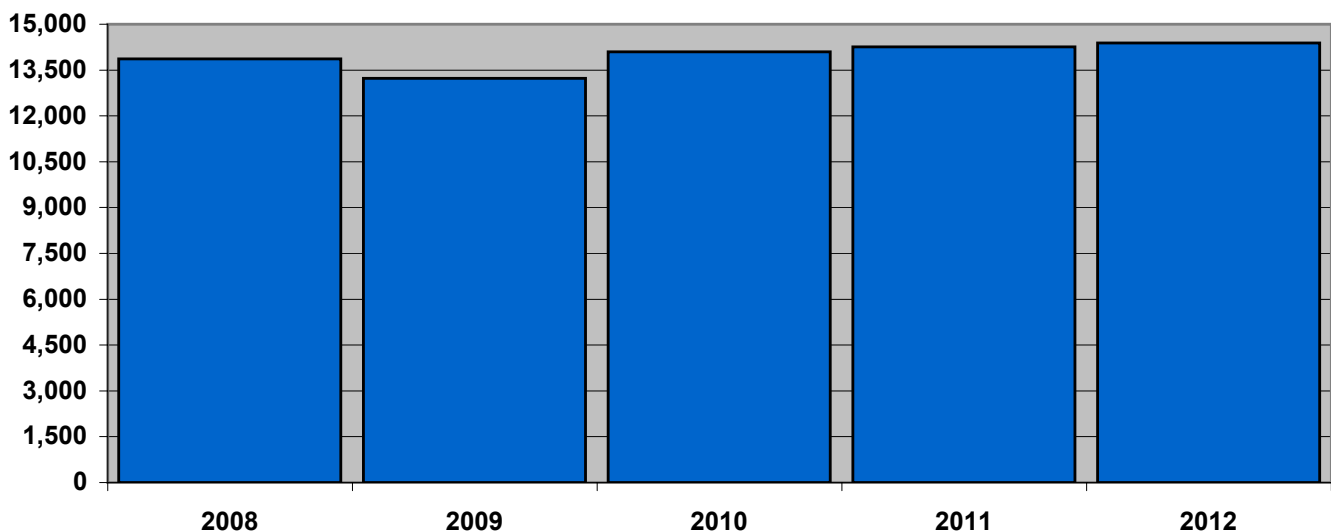
"Repeat Offenders" are people who have previously been booked into the Clackamas County Jail for any reason.

Releases

Type of Release	2012	2011	3 Year Avg. 2009/10/11
Book & Release	133	127	139.7
Cite & Release	2,696	2,918	2,946.3
Forced Release	711	219	299.3
No Complaint	282	299	269.7
Recognizance	2,894	2,974	2,678.7
Security (bail)	596	695	668.0
Time Served	5,077	4,936	4,654.3
Transport	1,907	2,025	2,148.0
Work Release	56	35	62.7
Other	12	2	2.7
Total:	14,364	14,230	13,869.4

This includes people who were released from jail during 2012, regardless of when they were booked.

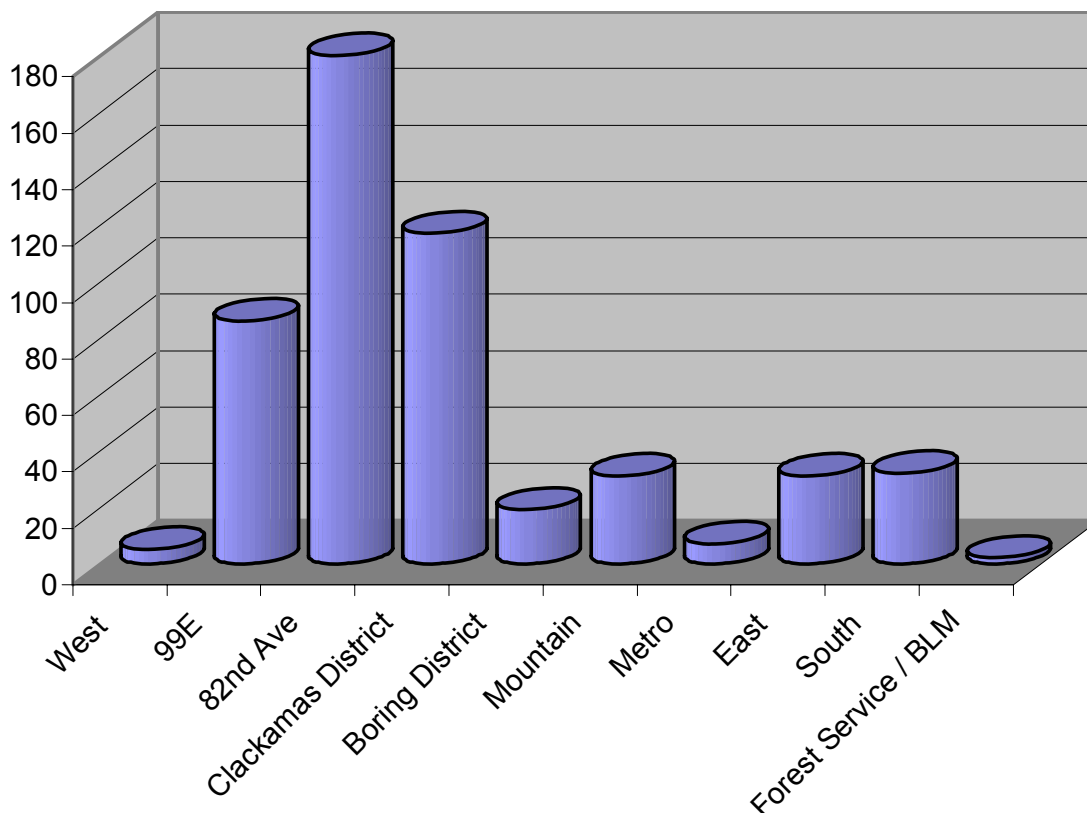
Number of People Booked into the Jail by Year



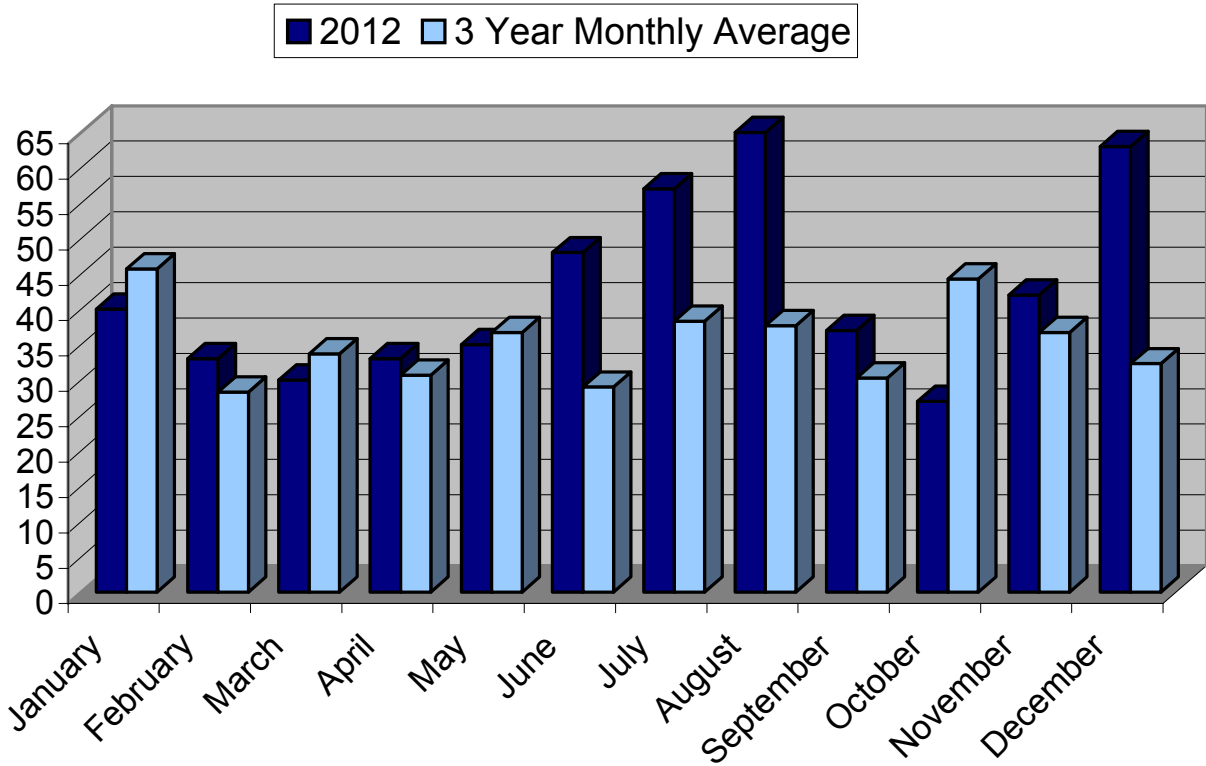
Stolen Vehicles by Patrol District

<u>2012</u>	<u>2011</u>	<u>Percentage Change</u>	<u>Prior 3 Year Average</u>	
510	388	31.4%	423.0	20.6%
District	2012	Percentage of Total	2011	3 Year Avg.
West	5	1.0%	4	7.3
99E	86	16.9%	68	73.0
82nd Ave	180	35.3%	110	116.7
Clackamas District	117	22.9%	116	129.7
Boring District	19	3.7%	22	18.7
Mountain	31	6.1%	11	15.0
Metro	7	1.4%	8	11.7
East	31	6.1%	18	19.3
South	32	6.3%	30	30.0
Forest Service / BLM	2	0.4%	1	1.3

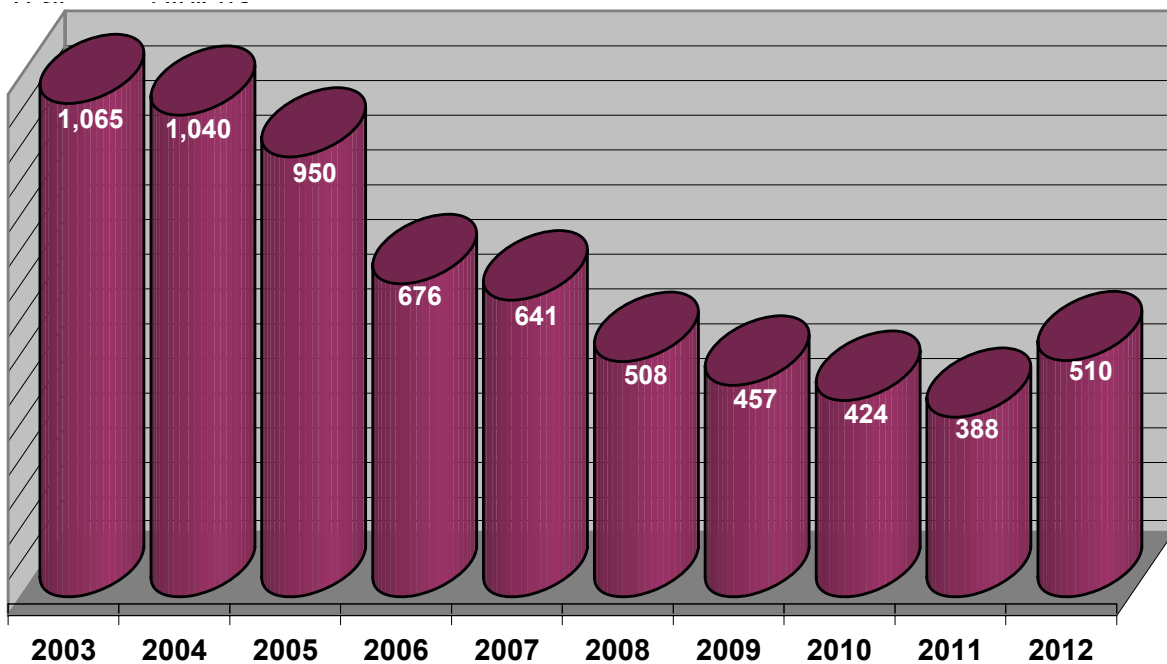
*This does not include stolen vehicles reported in the contract cities or stolen vehicle reports taken as a courtesy for other agencies.



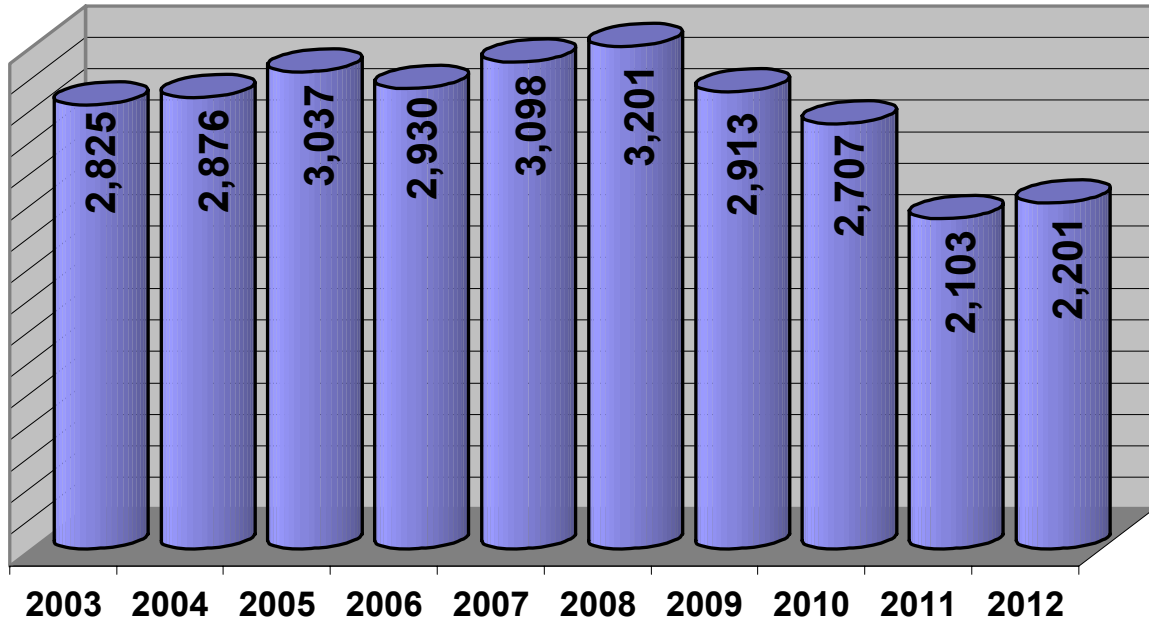
Stolen Vehicles: 2012 by Month



Stolen Vehicles: 10-Year History



Towed Vehicles by Year



Recovered Stolen Vehicles by Patrol District

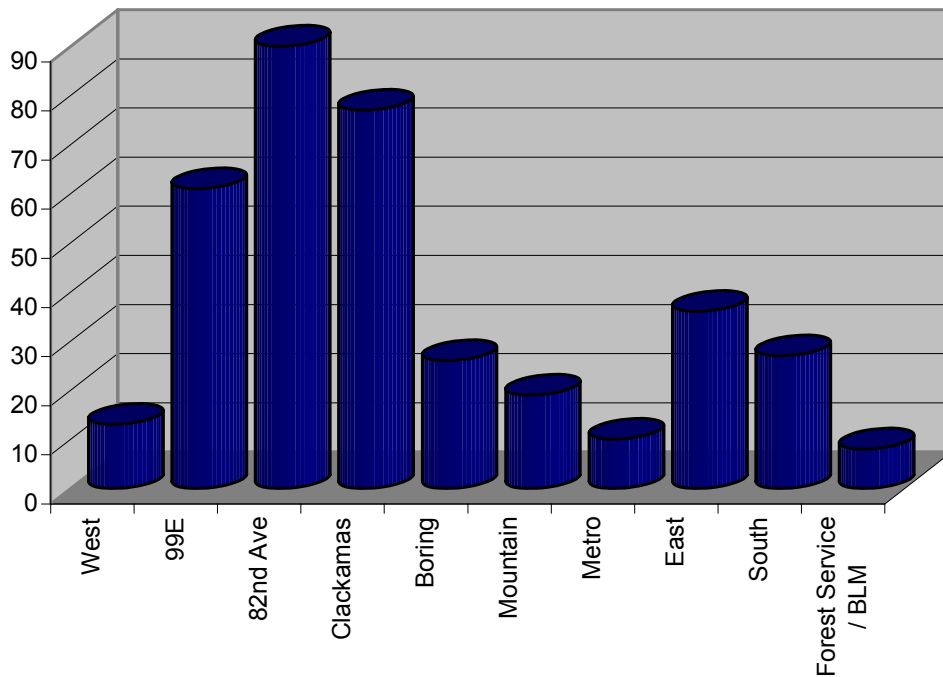
	<u>2012</u>	<u>2011</u>	Percentage Change	Prior 3 Year Average	
	375	262	43.1%	318.7	17.7%
District	2012	Percentage of Total	2011	3 Year Avg.	
West	13	3.5%	6	6.0	
99E	61	16.3%	42	51.3	
82nd Ave	98	26.1%	62	74.3	
Clackamas District	77	20.5%	49	60.3	
Boring District	26	6.9%	16	20.3	
Mountain	19	5.1%	15	17.7	
Metro	10	2.7%	5	10.7	
East	36	9.6%	23	31.0	
South	27	7.2%	30	31.3	
Forest Service / BLM	8	2.1%	14	15.3	

*The Sheriff's Office recovered an additional 75 stolen vehicles in the contract cities and in other jurisdictions

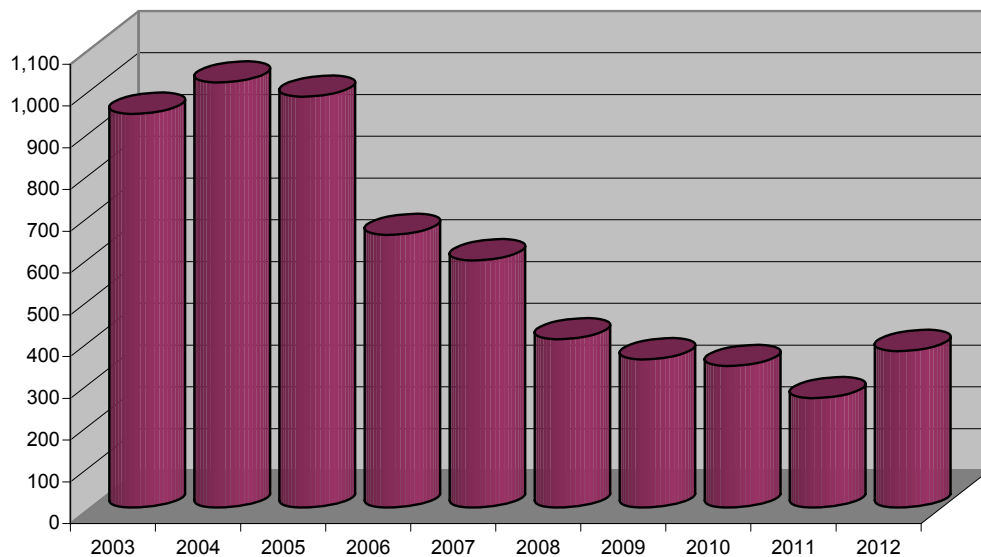
Recovered Stolen Vehicles

This includes all stolen vehicles recovered by the Clackamas County Sheriff's Office. Some of the vehicles were originally reported stolen to the Clackamas County Sheriff's Office and some were originally reported stolen to other police agencies.

2012 Recovered Stolen Vehicles by Patrol District



10-Year Recovered Stolen Vehicle History



CCSO Calls for Service

Type of Call	3 Year Average 2009/10/11	Number of Calls 2012	2012 Change From 3 Year Average	2012 Percentage Change
Abandoned Vehicle	238.7	63	-175.7	-73.6%
Accident, Other (not traffic)	1.0	4	3.0	300.0%
Airplane Crash	1.7	2	0.3	17.6%
Alarm, Audible	2,938.7	2,711	-227.7	-7.7%
Alarm, Other	31.3	37	5.7	18.2%
Alarm, Panic	177.3	157	-20.3	-11.4%
Alarm, Robbery	106.0	99	-7.0	-6.6%
Alarm, Silent	204.7	99	-105.7	-51.6%
Animal Complaint	921.3	886	-35.3	-3.8%
Arson	34.3	21	-13.3	-38.8%
Assault	655.0	686	31.0	4.7%
Assist Agency	1,506.3	1,302	-204.3	-13.6%
Assist Fire	591.3	644	52.7	8.9%
Assist / Cover Officer	93.3	160	66.7	71.5%
Assist Public	4,340.0	2,403	-1,937.0	-44.6%
Attempt Contact	85.0	80	-5.0	-5.9%
Attempt to Locate	97.7	91	-6.7	-6.9%
Bomb Threat	4.0	1	-3.0	-75.0%
Bombing	0.3		-0.3	-100.0%
Burglary, Commercial	194.7	182	-12.7	-6.5%
Burglary, Residential	929.0	970	41.0	4.4%
Criminal Mischief	1,261.3	1,140	-121.3	-9.6%
Death Investigation	179.7	214	34.3	19.1%
Disturbance	1,105.7	1,166	60.3	5.5%
Domestic Disturbance	2,420.7	2,470	49.3	2.0%
Escape / Walkaway	5.0	4	-1.0	-20.0%
Extra Patrol Requested	377.0	406	29.0	7.7%
Fireworks	42.7	22	-20.7	-48.5%
Fraud	1,271.3	1,224	-47.3	-3.7%
Harassment	1,315.0	1,268	-47.0	-3.6%
Hazard	1,119.3	1,103	-16.3	-1.5%
Homicide	1.0	2	1.0	100.0%
Incomplete 911 Call	785.3	686	-99.3	-12.6%
Juvenile Abuse / Neglect	288.7	236	-52.7	-18.3%
Juvenile Custody Problem	307.0	262	-45.0	-14.7%
Juvenile Disturbance	42.3	48	5.7	13.5%
Juvenile Missing (not runaway)	69.7	77	7.3	10.5%
Juvenile Problem	304.0	247	-57.0	-18.8%
K9 Incident	64.7	89	24.3	37.6%
Kidnapping	8.3		-8.3	-100.0%
Littering	65.3	76	10.7	16.4%

CCSO Calls for Service

continued

Type of Call	3 Year Average 2009/10/11	Number of Calls 2012	2012 Change From 3 Year Average	2012 Percentage Change
Marine Patrol	128.3	118	-10.3	-8.0%
Marine Rescue	36.3	53	16.7	46.0%
Menacing	90.3	64	-26.3	-29.1%
Mental	285.0	340	55.0	19.3%
Minor In Possession of Alcohol	125.7	100	-25.7	-20.4%
Missing Person	236.7	272	35.3	14.9%
Motorist Assist	1,120.3	1,040	-80.3	-7.2%
Noise Complaint	945.0	868	-77.0	-8.1%
Open Door / Window	100.0	113	13.0	13.0%
Ordinance Violation	134.7	163	28.3	21.0%
Parking Complaint	1,152.3	883	-269.3	-23.4%
Promiscuous Shooting	145.0	171	26.0	17.9%
Property Lost / Found / Recovered	637.7	656	18.3	2.9%
Provide Information	1,551.7	1,733	181.3	11.7%
Prowler	168.7	177	8.3	4.9%
Rape / Sexual Assault	73.7	72	-1.7	-2.3%
Recovered Stolen Vehicle	284.7	346	61.3	21.5%
Robbery, Armed	53.0	37	-16.0	-30.2%
Robbery, Strongarm	102.0	101	-1.0	-1.0%
Runaway Juvenile	740.3	761	20.7	2.8%
Search & Rescue	108.0	111	3.0	2.8%
Sex Crime - Expose	51.7	36	-15.7	-30.4%
Sexual Molest of Juvenile	112.7	93	-19.7	-17.5%
Shooting	19.3	16	-3.3	-17.1%
Stolen Vehicle / Unauthorized Use	559.0	650	91.0	16.3%
Suicide Attempt / Threat	620.7	765	144.3	23.2%
Suspicious Circumstances	1,252.7	1,080	-172.7	-13.8%
Suspicious Person	1,669.0	1,985	316.0	18.9%
Suspicious Vehicle	1,123.7	1,065	-58.7	-5.2%
Theft / Shoplift	4,690.3	4,593	-97.3	-2.1%
Threat	635.7	629	-6.7	-1.1%
Traffic Accident, Injury	333.7	324	-9.7	-2.9%
Traffic Accident, Non-Injury	1,713.7	1,678	-35.7	-2.1%
Traffic Accident, Unknown Injury	600.7	634	33.3	5.5%
Traffic Complaint	1,353.0	1,587	234.0	17.3%
Trespassing	687.0	776	89.0	13.0%
Unknown Type Call	523.7	443	-80.7	-15.4%
Unwanted	618.7	626	7.3	1.2%
Vice Complaint, Drugs	800.3	606	-194.3	-24.3%
Vice Complaint, Prostitution	13.7	10	-3.7	-27.0%
Violation of Restraining Order	282.0	312	30.0	10.6%
Welfare Check	1,255.0	1,540	285.0	22.7%
Total:	51,321.3	48,965	-2,356.3	-4.6%

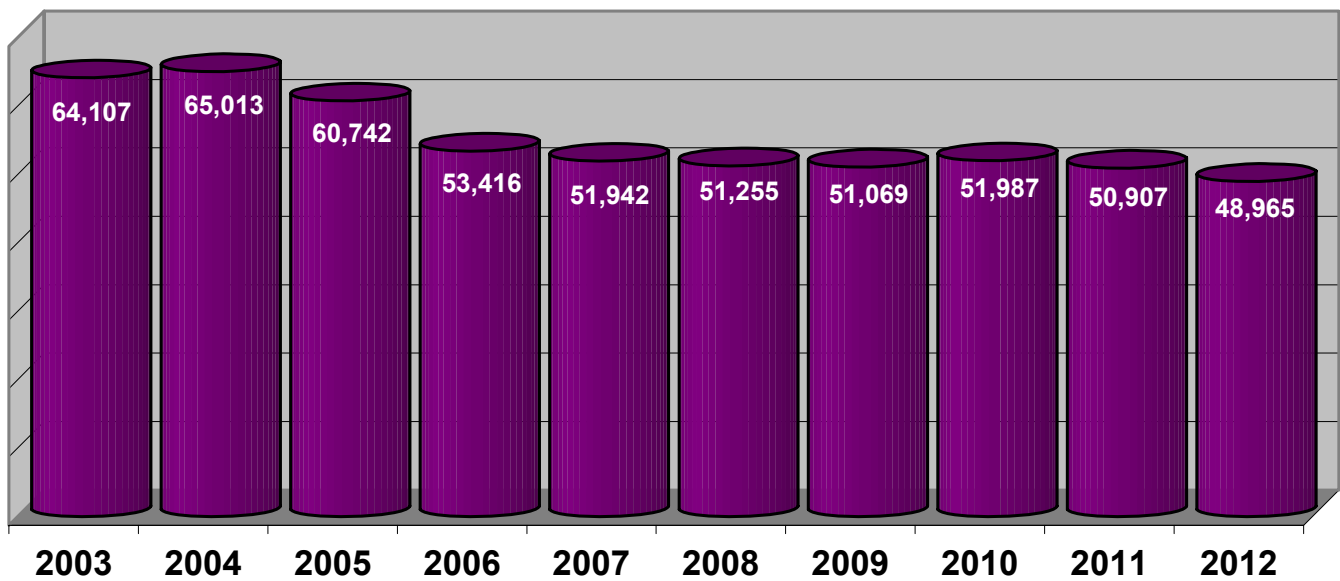
CCSO Calls for Service

continued

Other Activity	3 Year	Number of	2012 Change	2012
Type of Call	Average	Calls	From 3 Year	Percentage
	2009/10/11	2012	Average	Change
Boat Stop	52.0	5	-47.0	-90.4%
Civil	11,835.0	11,435	-400.0	-3.4%
Detail	3,013.0	2,711	-302.0	-10.0%
Follow-Up Contact	8,091.7	8,001	-90.7	-1.1%
Foot Patrol	88.7	80	-8.7	-9.8%
Home Visit	3,343.3	2,822	-521.3	-15.6%
Premise Check	2,325.0	2,182	-143.0	-6.2%
Pursuit	36.3	28	-8.3	-22.9%
Subject Stop	3,409.7	2,651	-758.7	-22.3%
Suspect Contact	716.0	589	-127.0	-17.7%
Suspicious Vehicle Stop	2,980.0	2,492	-488.0	-16.4%
Traffic Stop	26,497.0	23,364	-3,133.0	-11.8%
Transport	464.7	380	-84.7	-18.2%
Warrant Service	1,558.3	1,819	260.7	16.7%
Total:	64,410.7	58,559	-5,851.7	-9.1%

Calls for Service

Yearly Totals

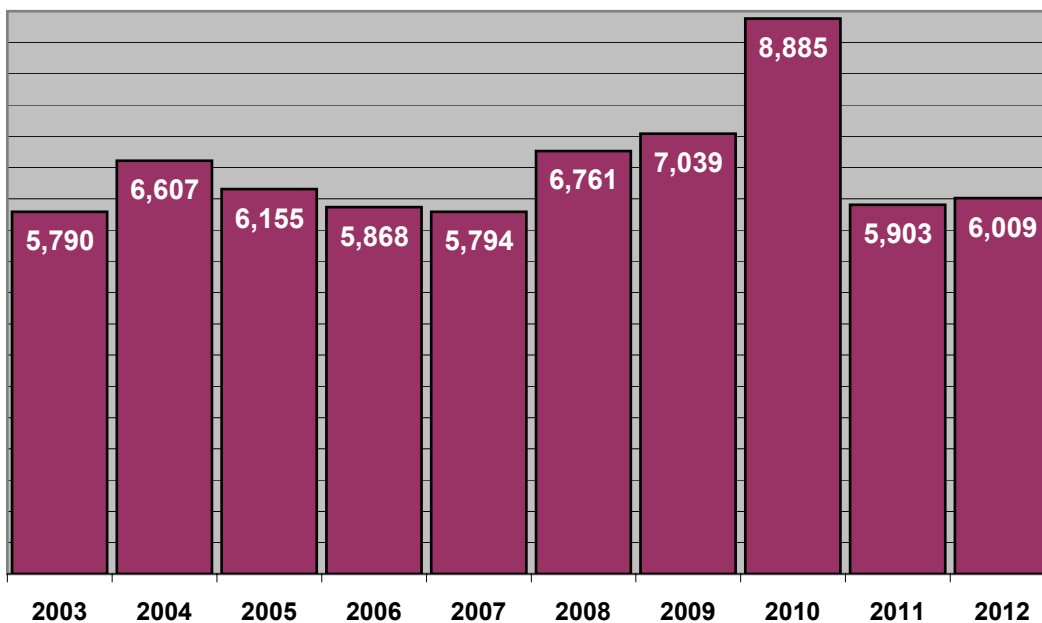


Property Room

Property Room: 10-Year History

Year	Number of Cases	Items Received	Items Released/ Destroyed
2003	5,790	19,915	21,228
2004	6,607	17,597	21,791
2005	6,155	18,460	18,014
2006	5,868	20,051	21,579
2007	5,794	16,430	22,100
2008	6,761	15,851	15,930
2009	7,039	16,847	13,416
2010	8,885	18,437	16,926
2011	5,903	19,999	15,262
2012	6,009	20,523	14,261

Number of Cases Handled by Property Room



INTERCEPT

Protecting Our Children from Online Predators

The Inter-agency Child Exploitation Prevention Team (INTERCEPT) was established in August 2007 by the Sheriffs of Clackamas, Multnomah and Washington Counties.

INTERCEPT is staffed with one Detective, one Computer Forensic Examiner and a Sergeant from the Clackamas County Sheriff's Office, one Detective from the Multnomah County Sheriff's Offices, and two Detectives from the Washington County Sheriff's Office.

Mission Statement

The mission of INTERCEPT is to investigate violation of state and federal laws, with an emphasis on crimes against children and to prosecute those violations in state and federal court. INTERCEPT investigations include, but are not limited to, violations of child sex crimes, child pornography, child exploitation and the use of computers to promote these crimes.

More than 65 million children ages 17 and younger are online in the United States.

According to a study conducted by the National Center for Missing & Exploited Children in partnership with Cox Communication:



- 61% of children ages 13-17 have a personal profile on a social networking site such as Facebook. Half of them have posted pictures of themselves online.

- 71% of teens report receiving online messages from someone they do not know, and 45% were solicited for personal information. Only 18% said they would tell a parent about receiving a message from someone they do not know.

- 40% said that when they receive a message from someone they do not know, they usually reply and begin a conversation with them.

- 14% have met someone in person who they first met online, and 30% have considered doing so.

- 33% reported that their parents know very little or nothing about what they do on the Internet.

INTERCEPT info online

For more information on INTERCEPT and tips on keeping your children safe online, download the INTERCEPT press kit at <http://www.clackamas.us/sheriff/documents/intercept.pdf> or visit www.clackamas.us/sheriff/intercept.html

You can also visit INTERCEPT's Facebook page at <https://www.facebook.com/intercept.oregon>

INTERCEPT Activity	2012	Total Since Inception of INTERCEPT
Investigations conducted	109	584
Search warrants served	40	222
Consent searches initiated	0	43
Computers seized	80	391
Pornographic images of children recovered	142,758	298,956
Indictments	9	74
Cases referred for Federal prosecution	2	23
People who attended Internet Safety Training	2,219	8,391

S.W.A.T.

The Clackamas County Sheriff's Office Special Weapons and Tactics team (SWAT) responded to 16 incidents in 2012. The SWAT team responded to 10 calls in 2011 and an average of 15.0 in the previous 3 years of 2009, 2010 and 2011.

Nine of the suspects surrendered, 3 were subdued by SWAT members, 1 committed suicide and 2 were not found at the scene. One of the incidents did not involve a crime.

The following chart shows how many SWAT incidents occurred in each patrol district in 2012:



District	Number of Incidents	Percentage of Incidents
West	1	6.3%
Wilsonville	1	6.3%
99E	4	25.0%
82nd Ave	1	6.3%
Clackamas	1	6.3%
Happy Valley		0%
Boring		0%
Damascus		0%
Mountain		0%
Metro	1	6.3%
East	1	6.3%
Estacada		0%
South		0%
Forest Service / BLM land		0%
Outside Agency Jurisdiction	6	37.5%

The following chart shows the initial situation classification for each SWAT call-out:

Type of Situation	Number of Incidents	Percentage of Incidents
Arrest Warrant	2	12.5%
Assault	1	6.3%
Domestic	1	6.3%
Hostage Situation	2	12.5%
Search Warrant (other)	6	37.5%
Suicidal Subject	1	6.3%
Tactical Consult	2	12.5%
Other Type Incident	5	31.3%

** This total may be higher than the total number of incidents because some incidents may have involved more than one factor.*

Search & Rescue



The data for this report was obtained from the 2010, 2011 and 2012 Oregon Emergency Management Annual Reports.

The Clackamas County Sheriff's Office's Search and Rescue Unit (SAR) responded to 94 missions in 2012. They responded to 95 missions in 2011 and 81 in 2010.

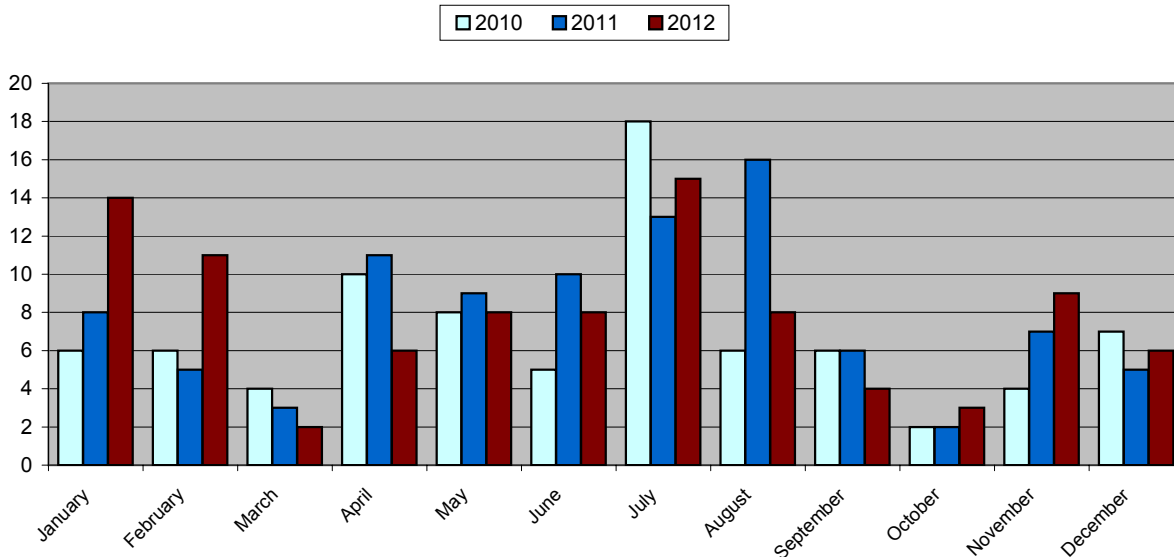
Clackamas County Mission Type by Year

Type of Mission	2010	2011	2012
Aviation	1		1
Beacon	1		
Body Recovery (land)	2		
Body Recovery (water)		2	
Evidence (land)	1	3	
Evidence (water)			
Missing Person (land)	28	44	33
Missing Person (water)	4	2	6
Rescue (land)	17	23	29
Rescue (water)	17	12	17
Other	10	9	8

Hours Worked During 2012

	Clackamas County	State Total
Paid	4,215	21,538
Volunteer	4,881	123,936

2010 - 2012 Clackamas County Search and Rescue Missions by Month



This graph compares the number of missions per month for 2010, 2011 and 2012.

Traffic

The Clackamas County Sheriff's Office investigated 1,357 traffic accidents in 2012. There were 8 people killed in 8 separate accidents. There were also 41 "courtesy" reports written for accidents that happened in other jurisdictions.

The top two causes for accidents in 2012 were careless driving (299) and excessive speed (134). Alcohol was involved in 124 (9.1%) of the accidents. One of the fatal accidents was alcohol related.



Total Accidents Reported	1,357	
Total Injury Accidents	471	34.7%
Possible	289	
Minor	162	
Serious	12	
Fatal	8	
Alcohol Related	124	9.1%
Hit & Run	539	39.7%

The following chart shows the top 10 intersections, based on the number of accidents reported to the Clackamas County Sheriff's Office at those intersections during 2012:

Intersection	Number of Accidents	Type of Injury				
		Fatal	Serious	Minor	Possible	None
82 nd Dr/Hwy 212	11				4	7
Johnson Creek Blvd/82 nd Ave	10				4	6
New Era Rd/Haines Rd	9	1	1		3	4
82 nd Ave/Causey Ave	8				6	2
Sunnyside Rd/132 nd Ave	8				5	3
Sunnyside Rd/Sunnybrook Blvd	7			2	2	3
Hwy 170/Kraxberger Rd	7			1	5	1
Johnson Creek Blvd/Bell Ave	7			1	2	4
Oatfield Rd/Aldercrest Rd	6			2	1	3
Webster Rd/Thiessen Rd	6			1	2	3

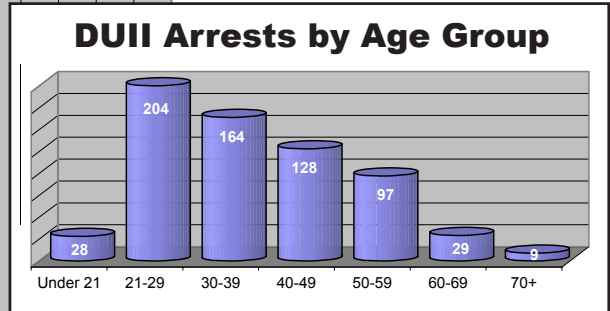
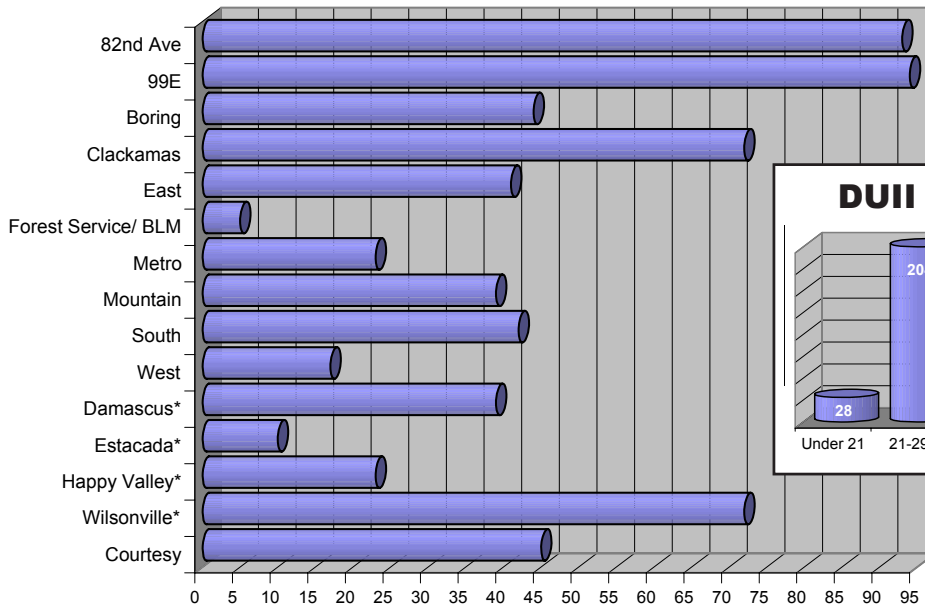
- The Sheriff's Office issued 11,667 traffic citations with 13,308 charges and 3,430 written warnings in 2012. The top two charges were speed related violations (2,851) and driving while suspended/revoked (1,652).

- The Sheriff's Office also performed 785 commercial vehicle inspections in 2012.

- The Sheriff's Office arrested 659 people for Driving Under the Influence of Intoxicants (DUII) in 2012. Of the 659 people arrested for DUII, 186 (28.2%) were female and 473 (71.8%) were male. Twenty eight were under 21 years old, with the youngest being 16 years old.

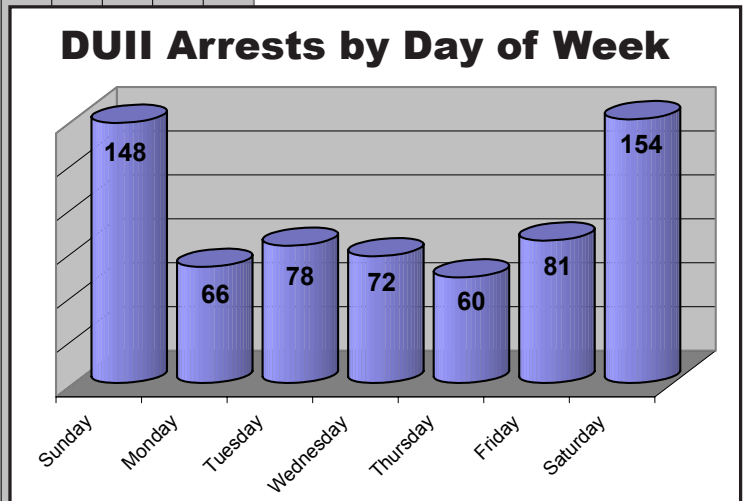
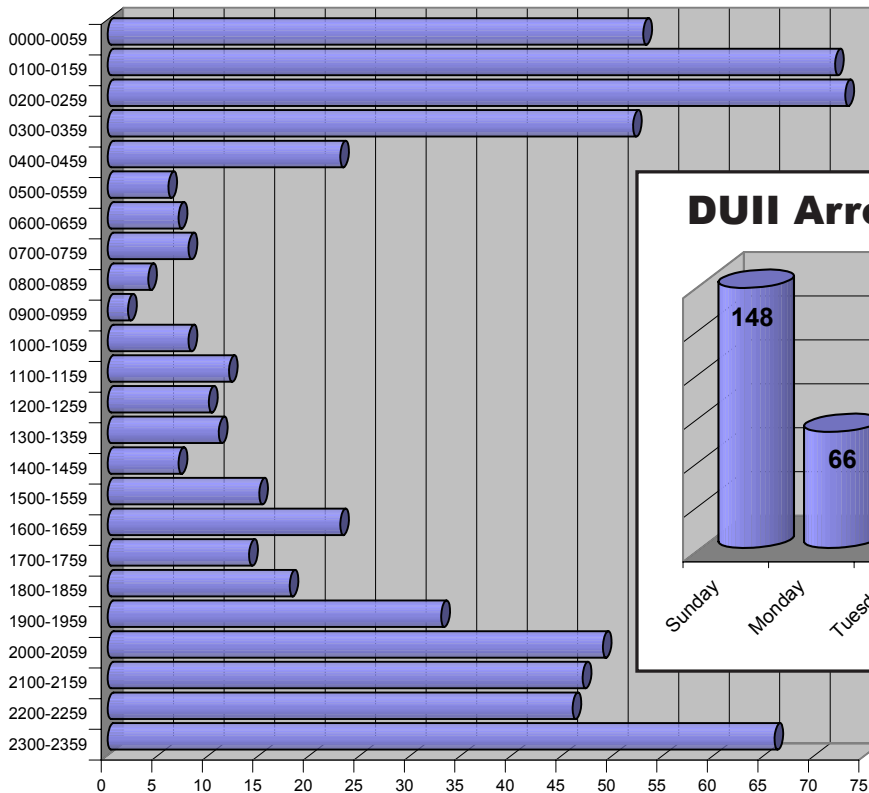
- This includes all DUII arrests made by the Sheriff's Office, including arrests made in contract cities and in other jurisdictions.

DUI Arrests by Patrol District



*Contract Cities

DUI Arrests by Time of Day



For More Information

For more information about the Clackamas County Sheriff's Office
and the material in this report, please contact:

Clackamas County Sheriff's Office

Crime Analysis Unit

2223 Kaen Rd
Oregon City, OR 97045

(503) 785-5088

You can also visit the
Clackamas County Sheriff's Office Web site at
www.clackamas.us/sheriff