

# **Clackamas County Climate Action Plan**

Community Conversation Workshops Summary

July 6, 2022

# Community Conversation Workshops

## Workshop Details

The workshops were carried out during the low carbon pathway development phase of the project. Both workshops contained the same content. Two workshops were held to maximize participation opportunities. The workshops involved community members and interested parties in understanding the community values, aspirations, and the climate readiness for the Climate Action Plan and consulted community members on implementation options to move climate action forward in Clackamas County.

	Community Conversation #1	Community Conversation #2
Date	June 14, 2022 at 12:00-1:30 pm PST	June 16, 2022 at 6:30pm-8:00 pm PST
Location	Online (Zoom), Registration via Clackamas County	Online (Zoom), Registration via Clackamas County
Number of participants	Twenty community members <sup>1</sup> representing government, advisory communities, residents, and non-profit organizations	Three residents

## Engagement Activity 1: Climate Action Game

### Overview

After hearing a presentation on the project overview, vision, and operating values, participants were asked to take part in a climate action game using Mentimeter, an online

---

<sup>1</sup> Community members are defined by those who live or are connected to Clackamas County (i.e., work, go to school, do business or shop in Clackamas)

engagement tool. The game aimed to further inform participants on climate actions and planning and debunk common climate change myths.

## Engagement Activity 2: Opportunities, Barriers, and Challenges to Climate Action Implementation

### Overview

After hearing an overview of the climate planning process, guiding principles, overview of baseline emissions and Business-As-Planned (BAP) emissions and opportunities presented by SSG, SSG facilitated an open discussion and question period with the use of Mentimeter. The open discussion was designed to collect ideas to reduce GHGs in the county, understand participants' barriers and challenges faced to taking climate action, and identify areas of support needed to take action.

### How the session worked:

Using Mentimeter, participants were asked to answer the following questions:

- Do you have any burning ideas for decreasing emissions in Clackamas?
- What barriers do you face in taking climate action?
- What are your biggest daily concerns?
- How can Clackamas County support you in reducing your GHG emissions?
- What surprised you about today's session?
- Is there anything else you would like to share today?

### Opportunities for Climate Action in Clackamas County

#### Any burning ideas for decreasing emissions in Clackamas?

The comments (19 comments) received from participants spanned six themes — transportation, energy and retrofits, food, carbon sequestration and forest, rural engagement, and changes in political leadership.

*"I know this is already on the table, but more regular and accessible public transportation! EVs are great, but they're nothing compared to buses or trains."*

*"Business rideshare programs coordinating with existing public transportation."*

*"Transportation on demand for rural elderly."*

*"A major increase in home and commercial retrofits"*

*"Can [the] County do anything to encourage retaining old growth and large trees?"*

## Barriers to Climate Action in Clackamas County

### What barriers do you face in taking climate action?

Common barriers (14 comments) identified by participants were economic costs and inflation, lack of safe and accessible active transportation infrastructure, public transportation accessibility, transparency, and knowledge translation.

*"My neighborhood is still not conducive to choices like walking, biking or transit."*

*"Energy retrofits are complicated and can be expensive up front."*

*"Inflation - Everything costs more now. It's making choices in resource scarcity."*

*"Understanding what our local utilities are already doing"*

*"Unsafe bike lanes on public streets are a deterrent for me."*

*"Not sure how to start in general"*

*"Navigating costs, incentives, and vetting contractors for solar retrofits."*

### What are your biggest daily concerns?

Participants were asked to rank the provided daily concerns from 1st (being top concern) to 6th (being lowest concern). The daily concerns were paying rent or mortgage, access to food/food security, paying utility bills (i.e., light, water), climate change, access to childcare and health and well-being.

For both community conversations, health and wellbeing and paying rent or mortgage were the top two daily concerns faced by participants, while access to childcare was the lowest daily concern. The remaining concerns were rated differently between the two workshops.

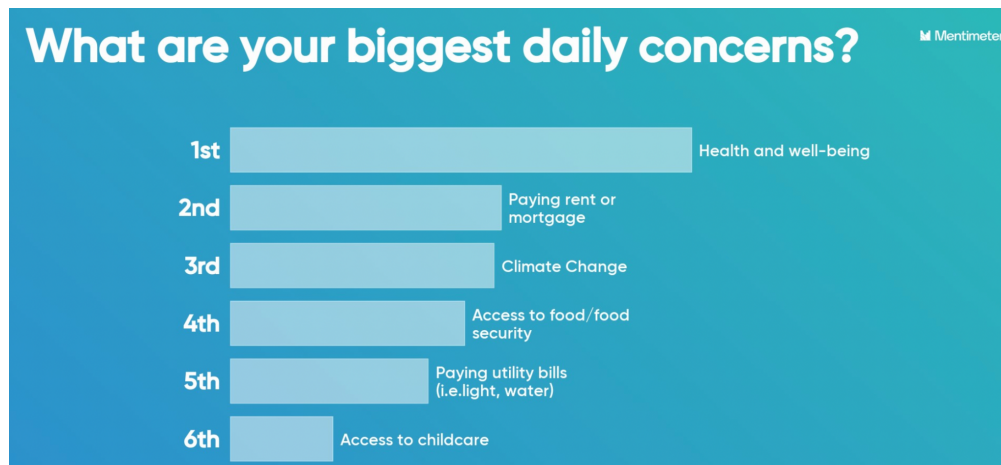


Figure 1. Community Conversation #1 participants' rating of daily concerns

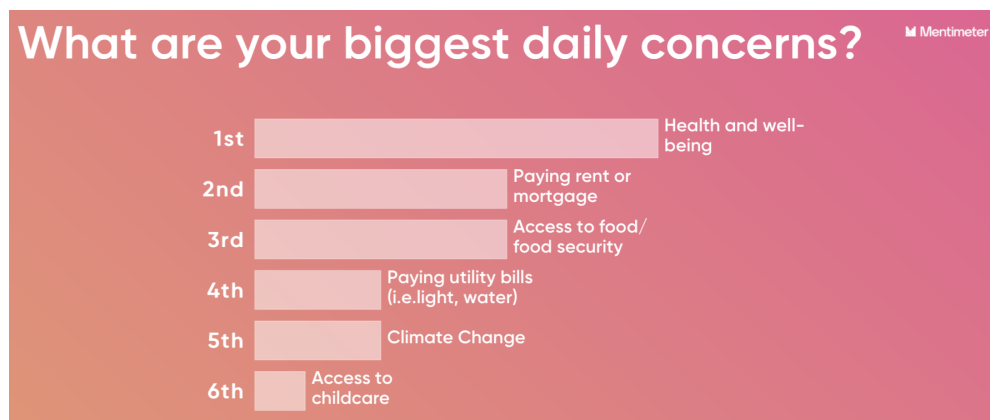


Figure 2. Community Conversation #2 participants' rating of daily concerns

## Are there other daily concerns not mentioned before?

Participants were asked to share if there are other daily concerns not mentioned in the previous question. There were a variety of concerns that include but not limited to children and youth future, the economy, resource management for EV batteries, climate resiliency, Covid vulnerability, climate anxiety, behavior towards climate change, the War in Ukraine, gun safety, political climate inaction, isolated people, urban-rural linkages, and the timber industry.

## What challenges do we need to be aware of to be successful in reducing GHG emissions in Clackamas County?

Challenges identified as impeding successful GHG reduction in the County are similar to the concerns shared by participants earlier. Challenges identified by participants include but are not limited to affordable housing and housing supply, education about climate change, political and County leadership and reluctance, inflation, accessible and well-connected public transportation, climate change being politicized, and auto-dependency behavior.

*"Getting programs to expand to rural areas is difficult. Because people in those areas are often reliant on fossil fuels/politically conditioned to not worry about climate change, it can be hard to persuade them to go along with policies."*

*"The county has urban, suburban, exurban and rural areas, all of which have very different needs and resources. One-size-fits-all doesn't work for us."*

*"Inflation a big issue for working families - hard to think about climate change"*

*"Political reluctance. Yet very important to have policy support at the top."*

## How can Clackamas County support you in reducing your GHG emissions?

To participants, support from Clackamas County looks like:

- Financial incentives, rebates and tax breaks for retrofits, electric bikes etcetera to encourage desired behavior change;
- Making it easier to switch to solar;
- Meeting people's basic needs (i.e., food and housing security);
- Creating 20-min neighborhoods;
- Ongoing education on climate change and public awareness campaign for community members;
- Make it easier to find climate action programs;
- Make it easier to purchase locally grown food and made products;
- Thoughtful and supportive climate action plan;
- Ban backyard burning;
- Provide shuttle buses in the absence of standard buses; and
- Change in County leadership.

## What surprised you about today's session?

Comments shared from participants were:

*"Interesting! Went quickly, engaging - thanks!"*

*"Few participants"*

## Is there anything else you like to share today?

Participants were provided another opportunity to share additional comments or ideas; but no additional comments were shared.

# Participant Feedback and Workshop Evaluation

At the end of the sessions, a workshop evaluation form was shared with participants to gain their feedback on how the workshop went. A total of five participants between the two workshops completed the evaluation form.

Please indicate the extent at which you agreed with the following statements:

Table 1. Community Conversation Workshop 1, Participant Workshop Evaluation

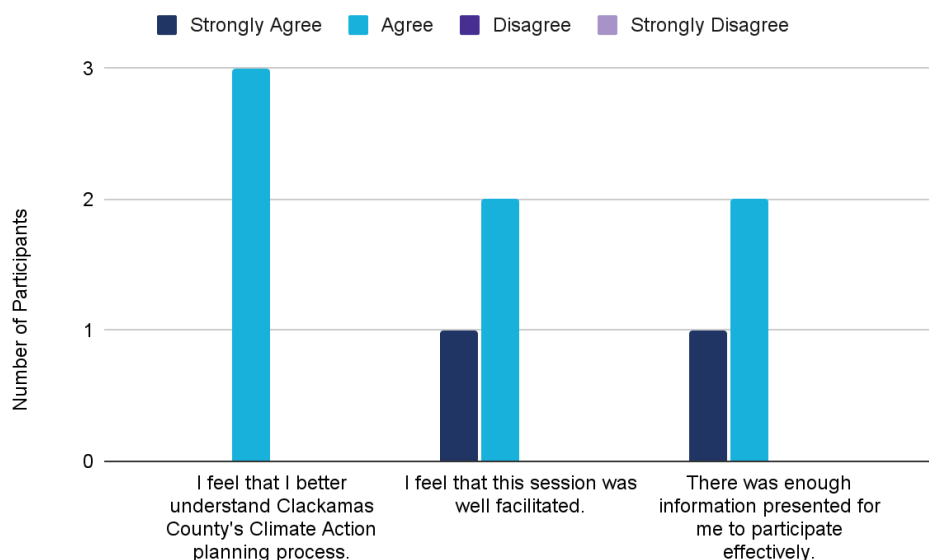
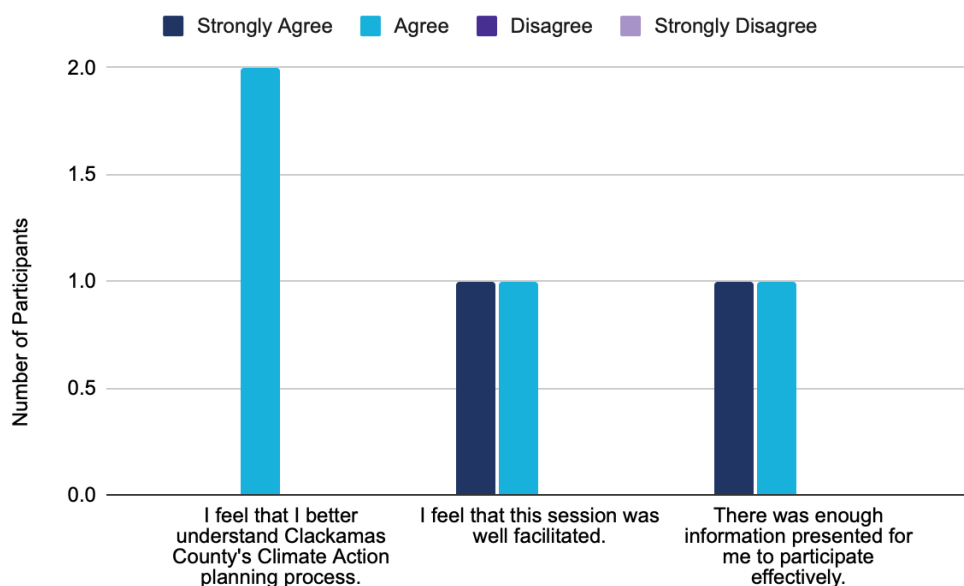


Table 2. Community Conversation Workshop 2, Participant Workshop Evaluation



### The part of the session I found most enjoyable was...

*"Interactive ways to participate."*

*"Data."*

*"Not sure."*

*"The interactive portion where we were able to use mentimeter."*

*"Facilitators addressing feedback and actions."*

### The part of the session I found least enjoyable was...

*"The opening series of questions. [A] lot of nuances [are] missing (as a result 'correct' answers felt either oversimplified or biased)."*

*"I enjoyed the entire session. It was a very informative presentation."*

*"Few participants. I would have preferred to engage with more participants."*

*"[The] quiz."*

Is there anything else you would like us to know going forward?

*"It seems like the plan so far only focuses on 1 of the county's 3 pillars of being carbon neutral (1 reduce GHG, 2 resilience/adaptations, 3 sequestration). Where is the discussion of 2 and 3?"*

*"Please organize in-person conversations."*