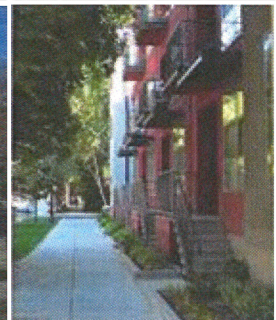
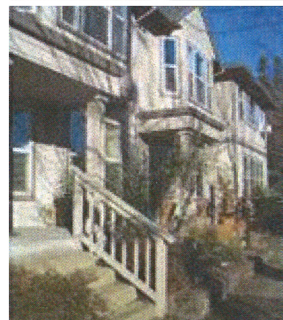


- a** Building height = 20 ft. min
- b** Front setback = 5 ft. min/15 ft. max
- c** Threshold depth (clear) from building façade = 5 ft. min
- d** Threshold height above grade = 6 ft. max
- e** Primary entry
- f** Required landscaping in setback



Examples of Porch/Stoop/Terrace Building Frontage: (Top row) Ground level stoops and landscaping for townhouse units; (middle row, from left) raised terrace in front of live/work units, porch and light court combination on residence converted to retail uses; (bottom row, from left) individual porches for townhouse units, stoop entries off of street for ground floor units; (below) front stoops on townhouse units.



Porch/Stoop/Terrace Building Frontage

CLACKAMAS COUNTY
ZONING AND DEVELOPMENT
ORDINANCE

Figure 1005-7
October 13, 2014

