

TIMBERLINE[®]



HOW WE GOT HERE

- Timberline is on public lands (National Forest System)
- To operate, Timberline must obtain a Special Use Permit (SUP) from the US Forest Service
- Forest Service SUP's require a Master Development Plan
 - Identifies existing and desired resort conditions and facilities
 - Provides direction for future development and improvements
 - Sustainable to the business operation
 - Sustainable to the surrounding environment
- Timberline's SUP is the longest held USDA Forest Service permit, 1955



**TIMBERLINE OPERATES UNDER A SPECIAL
USE PERMIT ON THE MT. HOOD NATIONAL FOREST.**

ENGAGEMENT & FEEDBACK

- During the Master Development Plan process, stakeholder engagements were held to solicit feedback.
- Consistent themes included:
 - Collaborating on transportation and infrastructure initiatives that improve on-mountain connectivity and safety
 - Promoting environmental stewardship, diversity and inclusion
 - Strengthen local economic development and community engagement
 - Attracting and supporting a high-quality workforce to help develop affordable housing solutions
 - Needing a broader view



OPPORTUNITY

- Government Camp livability
- Economic development
- Transportation and circulation
 - Opens door to alternative forms of transportation
 - Gondola
 - Shuttle improvements
 - Rest Area improvements
 - HWY 26 safety improvements
 - Parking improvements
- Heritage. Tribal and historic use
- Sustainability



OPPORTUNITY

- Smart planning intersects with larger improvement projects on the mountain. Consistency with partners and their initiatives
 - Clackamas County - Transit Hub location at Summit Pass
 - Clackamas County Park-and-Ride
 - Clackamas County Government Camp Pedestrian Restroom
 - Government Camp CPO, comprehensive plan
 - Rest Area Relocation
 - Vision Around the Mountain



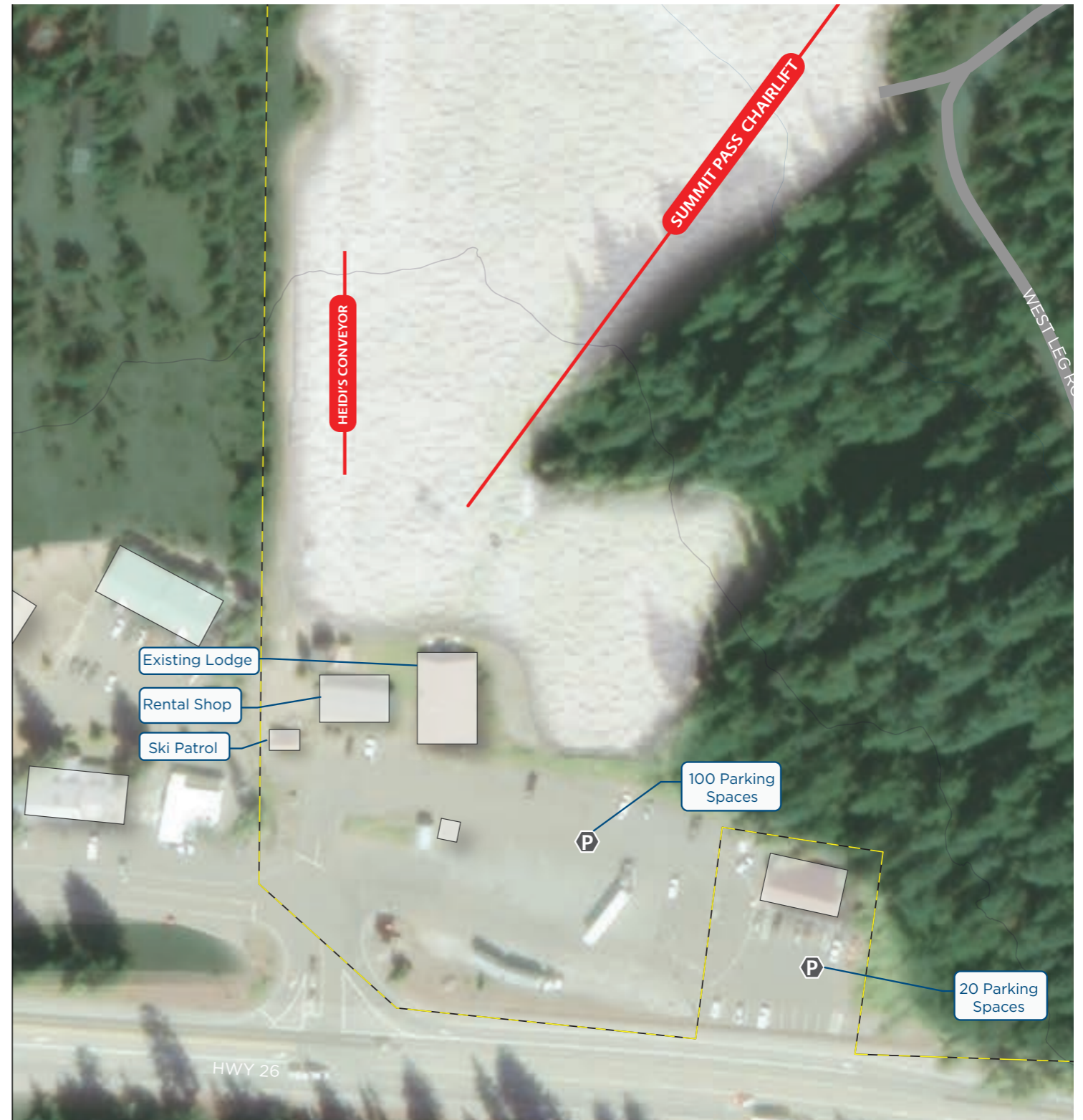


DEVELOPMENT CONCEPT

A PHASED APPROACH

Phase 1A

- Currently working towards formal submission to USFS January 2025
- Gondola construction w/ operational goal of November 2028
- Timberline is simply adding a lift to its permit area



Phase 1A

- Government Camp community shuttle
 - Includes collaboration with Skibowl
 - A fleet of shuttle buses continuously circulates through the Government Camp core between Summit Pass parking lot and Skibowl parking lots
 - Alpine and Nordic community access
 - Government Camp business core opportunity



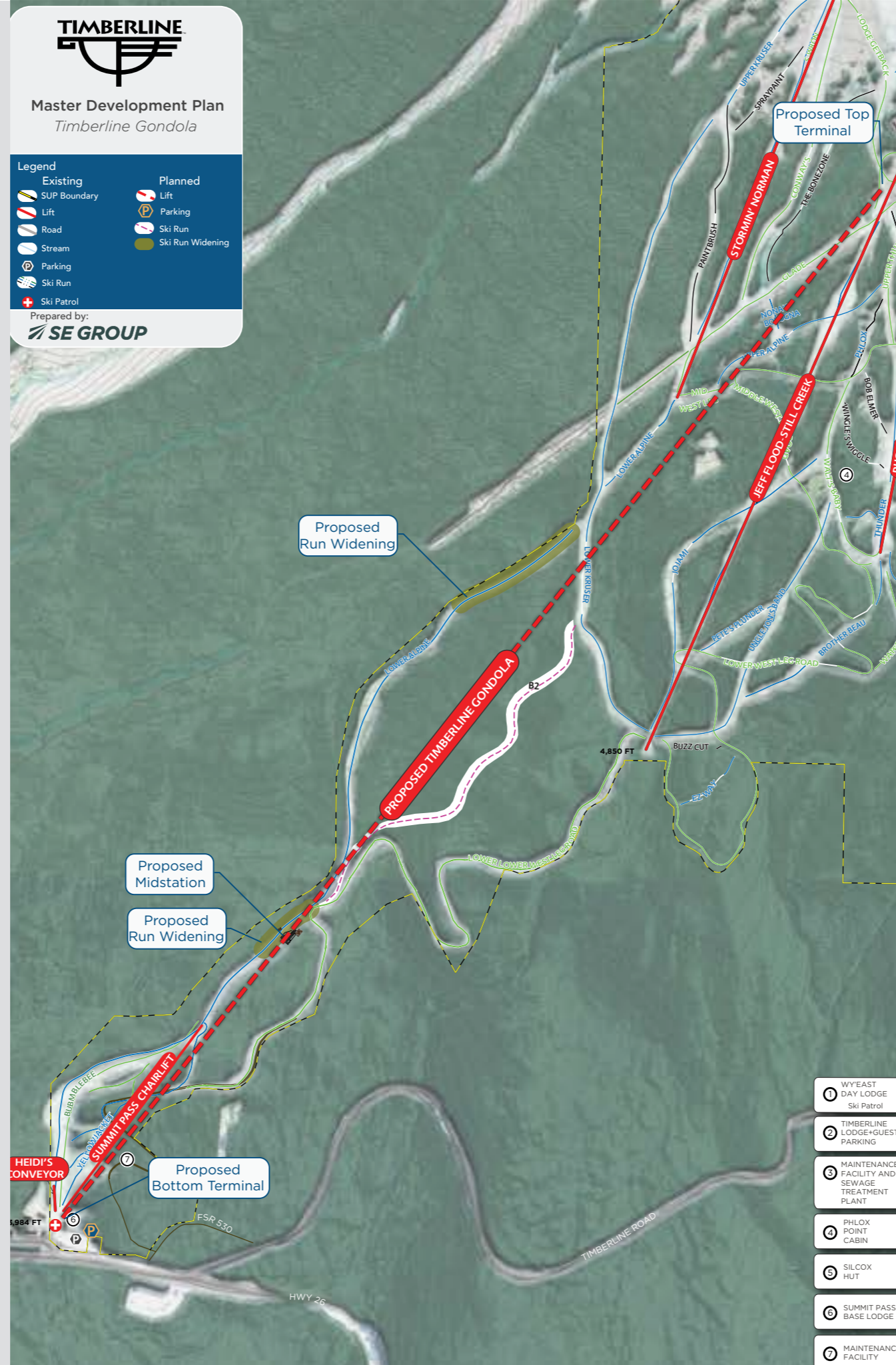


Master Development Plan
Timberline Gondola

Legend

- | | |
|-----------------------|--------------------------|
| Existing SUP Boundary | Planned Lift |
| Existing Lift | Planned Parking |
| Existing Road | Planned Ski Run |
| Existing Stream | Planned Ski Run Widening |
| Existing Parking | |
| Existing Ski Run | |
| Existing Ski Patrol | |

Prepared by:



- ① WYEAST DAY LODGE
Ski Patrol
- ② TIMBERLINE LODGE+GUEST PARKING
- ③ MAINTENANCE FACILITY AND SEWAGE TREATMENT PLANT
- ④ PHLOX POINT CABIN
- ⑤ SILCOX HUT
- ⑥ SUMMIT PASS BASE LODGE
- ⑦ MAINTENANCE FACILITY

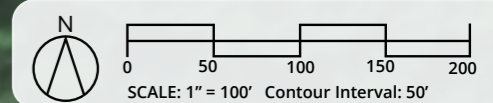


Summit Pass Base Area
Figure 1A

Legend

- SUP Boundary
- Lift
- Road
- Parking
- Planned Lift

Prepared by:
SE GROUP











A PHASED APPROACH

Phase 1B

- Assumption: the rest area has been relocated
- Construction of additional parking at Summit Pass
- Adding appropriate parking so as not to trigger capacity issues at Summit Pass intersection. Some mitigation will be required.
- Access Management Plan
 - Take Summit Pass parking out of the Sno-park system
 - Summit Pass reservation system
 - Summit Pass paid parking
 - Customers will know if they have a spot at Summit Pass or will need to go to Timberline before they leave town

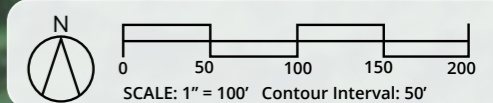


Summit Pass Base Area
Concept Plan and Transit Hub

Legend

Existing		Planned	
	SUP Boundary		Lift
	Lift		Parking
	Road		Plaza
			Paved Road
			SUP Boundary Adjustment

Prepared by:
SE GROUP



A PHASED APPROACH

Phase 2

- Clackamas County transit hub construction at Summit Pass
- Phase in more Summit Pass parking
- Likely traffic mitigation needed
- Summit Pass base area development begins

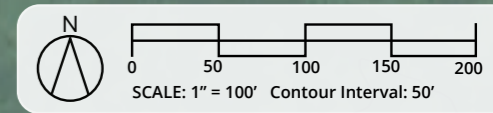
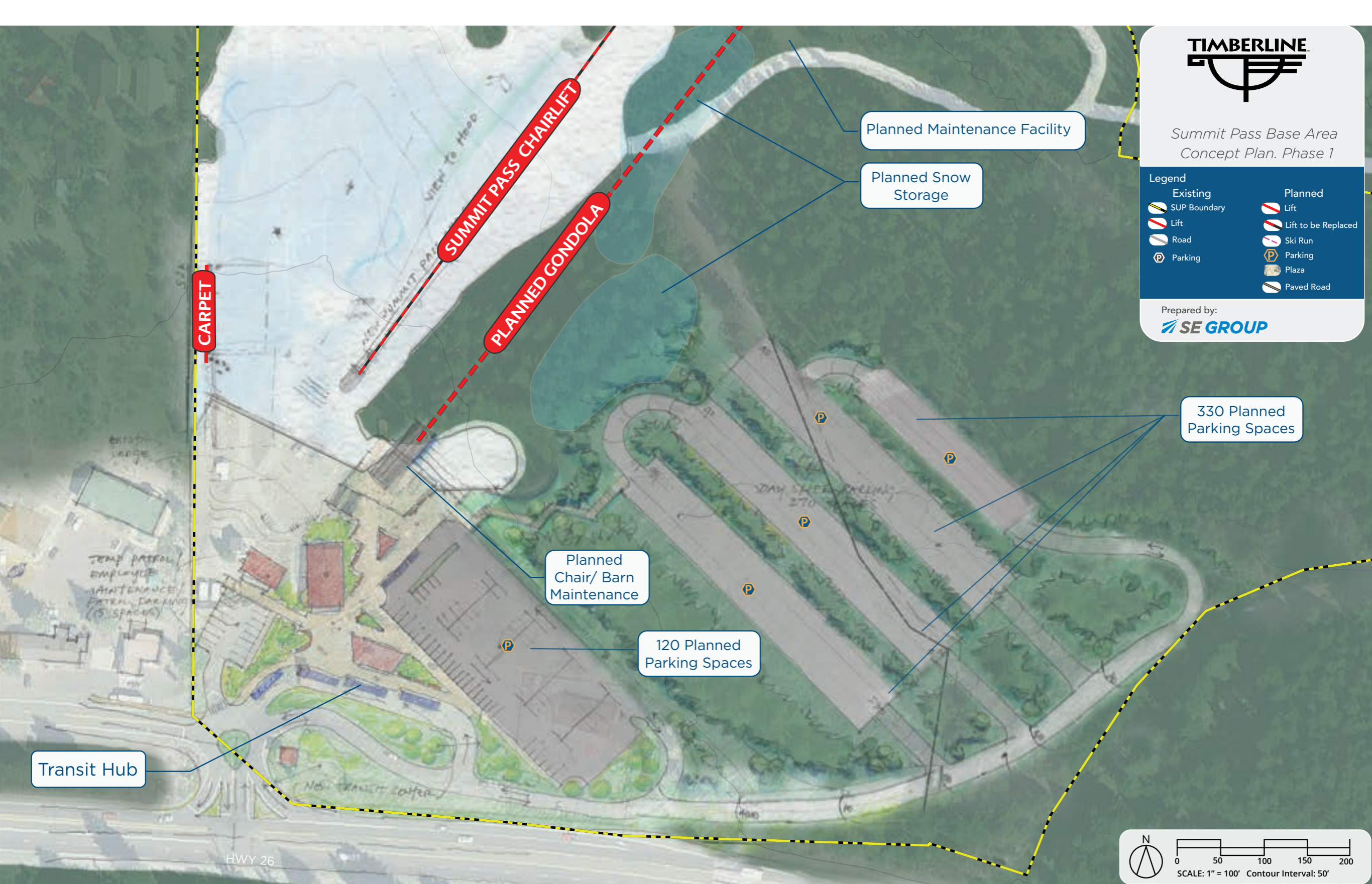


Summit Pass Base Area
Concept Plan. Phase 1

Legend

Existing	Planned
SUP Boundary	Lift
Lift	Lift to be Replaced
Road	Ski Run
Parking	Parking
	Plaza
	Paved Road

Prepared by:
SE GROUP



Transit Hub

CARPET

SUMMIT PASS CHAIRLIFT

PLANNED GONDOLA

Planned Maintenance Facility

Planned Snow Storage

330 Planned Parking Spaces

Planned Chair/ Barn Maintenance

120 Planned Parking Spaces

HWY 26







THANK YOU