



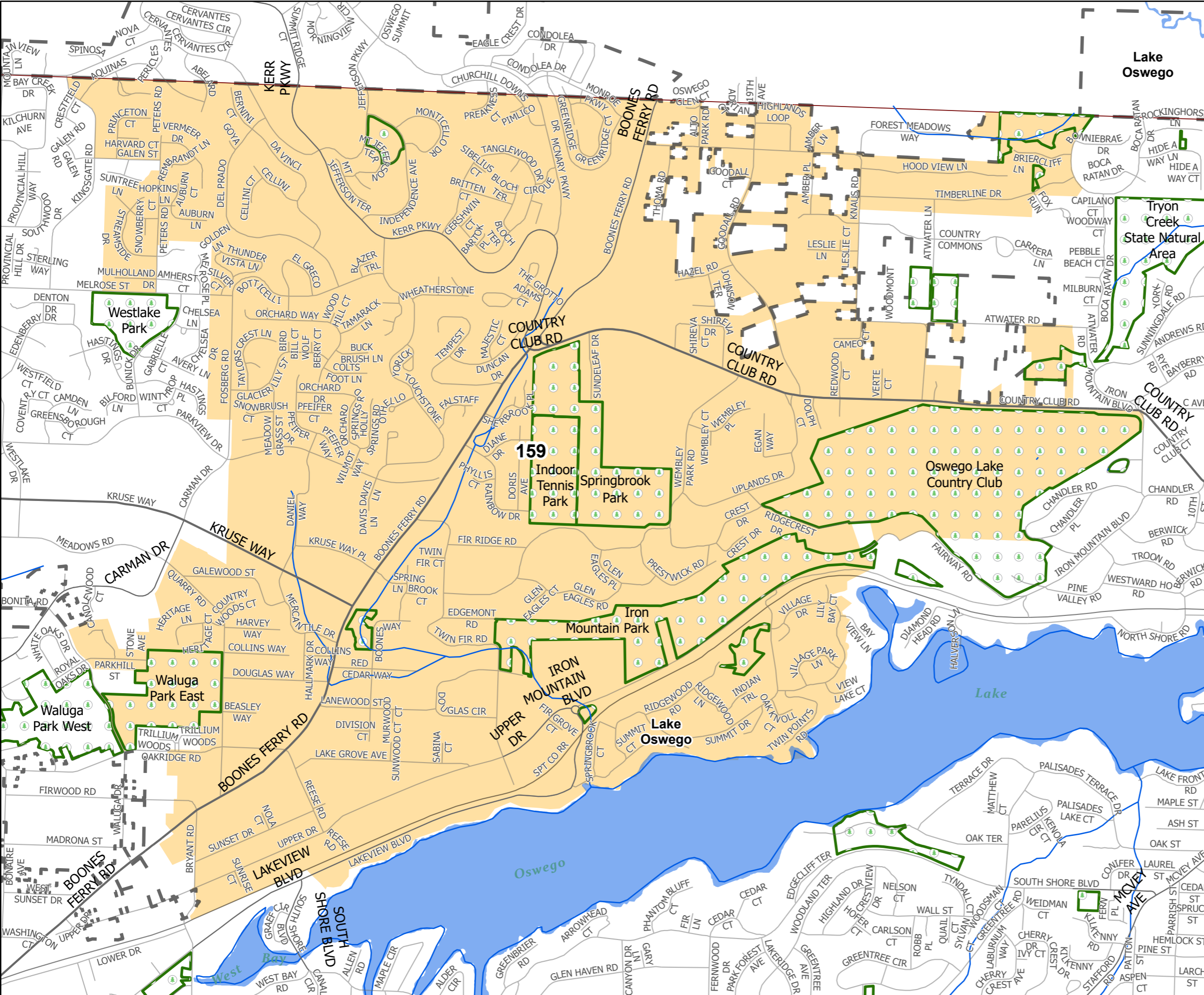


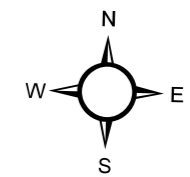
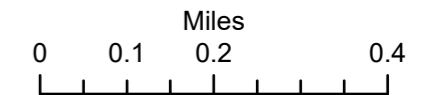
Voter Precinct 159

State House District: 38
State Senate District: 19
Congressional District: 5

-  Recreation
-  Rural Communities
-  County Boundary
-  City Boundaries



Date Printed:



CLACKAMAS COUNTY

GEOGRAPHIC INFORMATION SYSTEMS

DEPARTMENT OF INFORMATION SERVICES/GEOGRAPHIC INFORMATION SYSTEMS
121 LIBRARY COURT
OREGON CITY, OREGON 97045

The information on this map was derived from digital databases from Clackamas County's GIS. Care was taken in the creation of this map but is provided "as is". Clackamas County cannot accept any responsibility for any errors, omissions, or positional accuracy, and therefore, there are no warranties which accompany this product. Although information from Land Surveys may have been used in the creation of this product, in no way does this product represent or constitute a Land Survey. Users are cautioned to field verify information on this product before making any decisions.