



# CLACKAMAS C O U N T Y

## VOTERS' PAMPHLET MAY 19, 2020 PRIMARY ELECTION

Clackamas County  
Elections Division

1710 Red Soils Court Suite 100  
Oregon City, OR 97045

[www.clackamas.us/elections](http://www.clackamas.us/elections)

503.655.8510

---

**Sherry Hall  
County Clerk**

### Important Information

- The deadline to register to vote is **April 28, 2020** to be eligible for a ballot for this election.
- All official drop sites in Clackamas County are available to the public 24 hours a day from April 29, 2020 until 8 pm on Election Day. (p. C-52)
- Ballots must be received by 8:00 pm on Election Day, **May 19, 2020**.



# CLACKAMAS COUNTY

Office of the County Clerk

SHERRY HALL  
CLERK

1710 RED SOILS CT, SUITE 100  
OREGON CITY, OR 97045  
503.655.8510  
FAX 503.650.5687

Dear Clackamas County Voter:

This Voters' Pamphlet is for the May 19, 2020 Primary Election. It includes information to assist you with your Official Ballot. As the world learns to manage COVID-19 complexities globally, Oregon voters are fortunate to have Vote-By-Mail. Our election procedures and processes are in place to conduct this Primary election without sacrificing safety, security, or accuracy. In the interest of public health and safety, please note the following changes:

- **Vote from Home! Postage is no longer required to mail in your ballot.** Your ballot must be received in our office by 8 pm on Election Day, May 19th. Postmarks do not count, so we recommend using an official drop site after May 14th to ensure your ballot can be counted.
- **24-Hour Outdoor Ballot Drop Boxes** are located throughout the county for your convenience. Many drop boxes are located with drive-up access so you don't have to leave your vehicle. You may deposit your ballot at any official drop box in the state until 8 pm on Election Day, May 19th. Official Clackamas County ballot drop sites are listed on Page C-52 of this pamphlet.
- **Transparency.** Observers are a vital part of conducting an election and our office remains committed to allowing observation of all election activities as safely as our physical space allows. Ballot processing begins with the Public Certification Test of our vote tally system on May 12, 2020 at 9 am. Please contact our office if you would like to observe this or other processes.
- As our office complies with physical distancing guidelines, our essential employees are committed to servicing questions by email. You may contact us at [elections@clackamas.us](mailto:elections@clackamas.us).

Additional important information:

- **Registration Deadline is April 28th.** You may review your registration status at [oregonvotes.gov/myvote](http://oregonvotes.gov/myvote). You must be an active, registered voter by this deadline to receive a ballot for this election.
- Ballots will be mailed April 29th. Ballots will be delivered to households between April 30th and May 4th. **Please contact our office if you have not received your ballot by May 6th.**
- You will not vote on everything that appears in this pamphlet. Your Official Ballot will contain the candidate races and measures that you are eligible to vote on, based on your residence address and party affiliation. If you think something is missing from your ballot, contact our office.
- **Partisan Ballots** - You must be registered as a Democrat or Republican to be eligible to vote for that party's nominees for partisan offices that will be elected during the November General Election. If you are registered with a minor party or not affiliated with any political party, you will be eligible to vote only on nonpartisan offices and measures.
- If a ballot was delivered to your residence for someone who should no longer be receiving ballots at your address, please write "RETURN" on the envelope and place it back in your mailbox. If a ballot was sent to someone who has passed away, please write "DECEASED" on the envelope and place it back in your mailbox.

If you need assistance voting or have any questions about this particular election or the election process, please contact the Elections office.

Sincerely,

A handwritten signature in black ink that reads "Sherry Hall".

Sherry Hall  
Clackamas County Clerk



# No More Stamps!!!

Ballots can now be mailed without postage. Please make sure you **sign your envelope** before mailing or depositing in a drop box.

**Ballots are due by 8 pm  
on Election Day, May 19, 2020.**

- It is our recommendation that you do not mail your ballot after May 14th. Postmarks do not count!
- You may cast your ballots in drop boxes until 8:00 pm on Election Day, May 19, 2020. (Locations listed on page 52.)

# Table of Contents

## Voting Information

Letter from the County Clerk	C-2
Voter Registration Information	C-50
Voting Instructions	C-51
Official Ballot Drop Sites	C-52

## Candidates\*

### Clackamas County

Commissioner, Position 1, Chair	C-5
Commissioner, Position 3	C-6
Commissioner, Position 4	C-8
Sheriff	C-10

### City of Portland

Mayor	C-12
Commissioner, Position 1	C-13
Commissioner, Position 2	C-16
Commissioner, Position 4	C-21

### Metro

Councilor, Position 3	C-24
-----------------------	------

## Measures

### City of Happy Valley

3-558	C-26
-------	------

### City of Wilsonville

3-556	C-27
-------	------

### City of Portland

26-209	C-30
--------	------

### Centennial School District

26-208	C-31
--------	------

### Metro

26-210	C-34
--------	------

### Canby School District

3-559	C-48
-------	------



## Candidate Statements, Measure Texts, and Arguments are printed exactly as submitted.

Clackamas County Elections does not correct punctuation, typos, grammar or verify the truth or accuracy of any statements. Additionally, the printing of this material does not constitute an endorsement by the office.

Candidates and Measure filings appear in the order which they will appear on the ballot as instructed by the Secretary of State.

Arguments in favor/opposition to a measure appear in the order in which each type of argument was received at the County Elections Division.

**\*Not all candidates choose to purchase space in the Voters' Pamphlet.**

You may view a complete list of candidates who have filed for office and/or measure filings at <http://clackamas.us/elections>.

## Clackamas County Commissioner, Position 1, Chair



### Jim Bernard

**Occupation:** Clackamas County Commission Chair

**Occupational Background:** President Bernard's Garage Inc, Founder Milwaukie Farmers Market

**Educational Background:** Portland State University, B.S. Business Administration

**Prior Governmental Experience:** Milwaukie Mayor, Clackamas County Commissioner

#### Fiscally Responsible Leadership

As a third-generation small business owner, Jim learned from his father to succeed by working hard and "watching the money." And that's just what he's done as County Chair:

- As Chair of the Audit Committee, assured that Federal and State funds are spent properly, provided open and transparent access, and protected the County's AAA rating.
- Streamlined County application processes for citizens and businesses.
- Developed sustainable budgets and targeted investments to have the greatest impacts.

#### Protecting Our Families and Neighborhoods

Jim's fighting to keep our families and neighborhoods safe by:

- Providing sufficient funding for public safety, courts, and community corrections, ensuring that Clackamas remains one of Oregon's safest counties.
- Reducing homelessness and providing services that keep people on a path to recovery, such as mental health and addiction treatment programs for at-risk individuals.
- Funding the creation of the Family Justice Center to provide battered women, children and seniors the help they need in a safe environment.
- Creating family wage jobs for our citizens within their local communities.

#### Leading Clackamas County to a Prosperous Future

As your County Chair, Jim will continue to restore the County's reputation by:

- Rebuilding relationships with regional, state, and federal partners.
- Re-establishing trust with citizens in their county government, and providing greater citizen access to Commissioners.
- Securing funding for expansion of I-205 to reduce congestion.
- Providing businesses access to low cost bonds for development of critical service facilities.
- Advocating for veterans' services, education and housing.
- Providing low-cost high-speed internet service throughout the county.

#### **Endorsers:**

**Congressman Earl Blumenauer**  
**U.S. Senator Ron Wyden**  
**Attorney General Ellen Rosenblum**  
**Senator Rob Wagner**  
**Representative Mark Meek**  
**Commissioner Martha Schrader**  
**Commissioner Sonya Fischer**  
**Commissioner Ken Humberston**  
**Mayor Keith Swigart, Molalla**  
**Professional Firefighters of Clackamas County, IAFF Local 1159**  
**UFCW Local555**

VoteJimBernard.com

*(This information furnished by Jim Bernard)*

## Clackamas County Commissioner, Position 1, Chair



### Tootie Smith

**Occupation:** Farmer, Author  
Married 42 years

**Occupational Background:** Business Owner, Newspaper Editor, Executive Director

**Educational Background:** Concordia University, Management & Communication, BS; College of Legal Arts, Portland; FEMA, Emergency Management Institute, Certificate

**Prior Governmental Experience:** Clackamas County Commissioner (2013-2017), State Representative (2001-2005), Advocate for disability groups

#### **The Best Choice for Clackamas County Chair:**

I'm a 4th generation farmer and business owner in Clackamas County. I was born in Oregon City, and raised with Oregon values.

I'm concerned by high housing prices, and ever-increasing property taxes that squeeze working families, keep young families from owning a home, and threatens our seniors on fixed incomes. We must ensure our public health is responsive and available.

We must preserve Clackamas County's way of life by remaining independent of Portland's big government solutions, homelessness, and crime.

We need our county government to be responsible with our tax dollars. By cutting waste, we can live within our means, we can solve our communities most pressing issues.

As a County Commissioner and State Legislator, I helped balance the State \$34 billion budget - without raising taxes.

I believe that core services must be maintained. But not every new idea that comes across the table should be taxpayer funded.

- No new taxes without vote of the people
- Balance budgets before taking on debt
- Accountable, yet compassionate approaches to fix homelessness
- Fix potholes and roads

#### **New Leadership for New Challenges**

My opponent refuses to manage county government responsibly and acknowledge common sense ways of tackling issues.

As Metro and the Legislature continue to overreach and pass endless taxes, we need local leadership to stand up for the people of Clackamas County. I will be that leader.

#### **Jim Bernard's Disappointing Record-We Can Do Better**

- Supported a vehicle registration fee, after voters rejected it by 64%
- Supports 4 new taxes from Metro
- Supports a \$230 million taxpayer funded courthouse

#### **Endorsements:**

Timber Unity  
Oregon Small Business Association PAC

"Tootie Smith is a fearsome leader, represents the people."  
Shelby Naylor Concerned Citizen

www.tootiesmith.com

*(This information furnished by Tootie Smith)*

*The above information has not been verified for accuracy by the county.*

## Clackamas County Commissioner, Position 3



### Martha Schrader

**Occupation:** County Commissioner

**Occupational Background:** Teacher, Librarian, Farmer

**Educational Background:** Cornell University, B.S.; University of Illinois, M.S.; Portland State University, M.S.

**Prior Governmental Experience:** County Commissioner, State Senator

Dear Friends,

I care deeply about Clackamas County. I raised my children here and have called the county home for nearly 40 years. Before entering public office, I ran a small farm and worked as a teacher and school librarian.

Serving as commissioner means rolling up your sleeves to improve the lives of residents and make our county more prosperous. I ask for your support to continue making progress toward our shared Oregon values.

#### VISION FOR OUR COUNTY

##### Prosperity for Workers and Businesses

- Promote international trade opportunities
- Collaborate with Clackamas Community College to build workforce pipeline
- Grow jobs through cross-laminated timber and other technologies
- Support local business expansion

##### Taking Care of People

- Increase affordable housing capacity and tackle homelessness
- Expand intermediate- and long-term housing for veterans
- Improve access to high-quality health services, including mental health, diabetes, and dental care

##### Sustainability, Tourism, and Agriculture

- Enhance the Willamette Falls area (Willamette Falls Legacy Project and Willamette Falls Locks State Commission)
- Support endangered pollinators with native plants in county grounds and parks
- Improve energy efficiency and conservation in public buildings

#### ENDORSEMENTS

Columbia Pacific Building Trades  
Home Builders Association of Metropolitan Portland  
Joint Council of Teamsters No. 37  
Metro Councilor Christine Lewis  
NW Carpenters Union  
NW Oregon Labor Council, AFL-CIO  
Portland Business Alliance  
Portland Metropolitan Association of REALTORS  
Tualatin Valley Fire Fighters Union  
UA Local 290 Plumbers & Steamfitters  
United Food and Commercial Workers Local 555

##### Clackamas County Mayors:

Sean Drinkwine, Estacada  
Tom Ellis, Happy Valley  
Mark Gamba, Milwaukie  
Dan Holladay, Oregon City  
Frank Bubenik, Tualatin  
Tim Knapp, Wilsonville

##### Clackamas County City Councilors:

David Emami, Happy Valley  
Brett Sherman, Happy Valley  
Lisa Batey, Milwaukie  
Wilda Parks, Milwaukie  
Bridget Brooks, Tualatin  
Jules Walters, West Linn  
Kristin Akervall, Wilsonville

And many more at [www.commissionerarthaschrader.com](http://www.commissionerarthaschrader.com)

Together, we can keep Clackamas County a great place to live, work, and play!

- Martha Schrader

*(This information furnished by Martha Schrader)*

## Clackamas County Commissioner, Position 3



### Bill Osburn

**Occupation:** Consultant/  
Volunteer Organizer

**Occupational Background:** Small Business Owner, Commercial Fisherman, Mechanic

**Educational Background:** Oregon City/Rex Putnam High Schools. Clackamas Community College-Criminal Justice/ Auto Mechanics(AA)

**Prior Governmental Experience:**

Traffic and Safety Commission, TSP advisory panel, Community Advocate

#### Community achievements:

- CERT team member
- SOLVE cleanups at High Rocks
- Gladstone Historical Society-President
- Recall Petitioner/Organizer

My family has resided in Clackamas County for 120 years, 180 in Oregon. Some of my ancestors have been in this land much longer. To say I'm a native is an understatement.

I was born in Oregon City and raised my six children in Oak Grove before settling in Gladstone. I worked as a fleet maintenance mechanic and a commercial fisherman. This taught me how to keep calm and deal with problems on the move in a high-stakes environment.

I believe we need to make repairs to our political system so that it starts serving "We The People" again. I've watched as new taxes and fees make living almost impossible. It seems every time we turn around, prices, fees, or taxes have skyrocketed! Meanwhile our paychecks seem to wither more and more as hours are cut or pay isn't keeping up with costs.

Our vehicle registration fees have more than doubled in the last few years despite the voters turning down previous measures. While I acknowledge we need to repair our roads I believe we should have been allowed to vote on this. This as so many other votes have been along partisan lines.

I believe one of the biggest problems in politics today is the party war. This plays out from the lowest level to the white house. I am "Not Affiliated" with any party, nor have I ever been. I believe we need leadership that's more loyal to the people than their party. My allegiance is and always will be to the people.

Please consider me when casting your vote.

Thank you

Bill Osburn

[www.billosburn.com](http://www.billosburn.com)

*(This information furnished by Bill Osburn)*

The above information has not been verified for accuracy by the county.

## Clackamas County Commissioner, Position 3



### Evan Geier

**Occupation:** Clackamas County Commissioner Candidate and Community Organizer

**Occupational Background:** Dreyer's, Longview Fibre, UBER, RSG, TNG, RHA

**Educational Background:** U of O, B.S. Honors Business Finance; Portland State, Political Science

**Prior Governmental Experience:** Student Government/Entrepreneur

#### Issues

Evan Geier will be honest he sees the commissioner seat as a path to the executive white house. He sees how government parties combine finance and law into a single vote limiting accountability and leaving the people they serve obeying finance. Laws might be different at different levels of government; however, laws should be broken up by category, reviewed, then re-imagined from scratch. Laws to vote on should come out of secret committee and sent to congress for vote in the comfort of wherever without parties and collusion. Furthermore, congress could receive a bonus per word of the bill they vote on and other levels of government such as the cities and counties can adopt similar policy. The separation of finance and rule of law should close loopholes, encourage revisits of recycling programs, and begin to address loitering and shelter issues.

#### Issues

Specifically, for the county Evan wants to encourage employee price check, purchase competition, and spending transparency. He also wants hour and wage flexibility based on how the economy is doing, and efficient LED infrastructure and lighting everywhere possible to reduce electricity use and save money.

#### Investor Statement

"Going forward most oil exploration and production companies to outperform market," origination [www.evan.wiki](http://www.evan.wiki) (URL) now also at [www.EvanDGeier.com](http://www.EvanDGeier.com) website. Use the advice 2020 and decide 2022 and return the favor. To be honest I've been in and out of energy during my life for better or worse financially starting with Exxon in 1995 and First Solar in 2008 (which I still hold).

#### Who is Evan Geier

Sports, Business, Politics and more detail found on my self-created website @ [www.EvanDGeier.com](http://www.EvanDGeier.com), or Evan Geier's social media accounts on Twitter, Tumbler, and Facebook.

[www.EvanDGeier.com](http://www.EvanDGeier.com)

*(This information furnished by Evan Geier)*

*The above information has not been verified for accuracy by the county.*



#### **WHAT IF I DID NOT RECEIVE A BALLOT?**

If you did not receive a ballot by May 6th, call the Elections Division at 503.655.8510.

#### **WHAT IF I NEED ASSISTANCE VOTING?**

Call the Elections Division for further instructions at 503.655.8510. You may also email us at [elections@clackamas.us](mailto:elections@clackamas.us).

#### **WHAT IF I MAKE A MISTAKE ON MY BALLOT?**

You may simply cross out the selection you do not want, write "not this", and circle the one you would like to vote for. You may review examples on page C-51 of this pamphlet.

#### **WHAT IF I CHANGE MY MIND AFTER I HAVE RETURNED MY BALLOT?**

As soon as you deposit your ballot in a mailbox or at a ballot drop site, your ballot is considered to have been cast. A new ballot cannot be issued.

#### **DOES MY BALLOT HAVE TO BE RETURNED BY MAIL?**

No. You may return your ballot by mail or drop it off at any official drop site in the state. Clackamas County drop sites are listed on page C-52 of this pamphlet.

#### **DO I NEED TO ATTACH FIRST-CLASS POSTAGE TO MY BALLOT ENVELOPE?**

No, first-class postage is **NOT** required to mail your ballot back to the Elections Division.

#### **WHEN MUST MY BALLOT BE RETURNED?**

Your voted ballot must be received in any county election office or official drop site by 8:00 p.m. on election night, Tuesday, May 19, 2020. Remember: The postmark does **NOT** count.

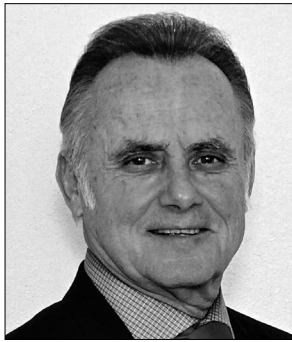
#### **WHAT IF I SEAL MY RETURN ENVELOPE AND REALIZE I FORGOT THE SECRECY SLEEVE?**

Forgot your optional secrecy sleeve? Relax! Election workers will preserve the privacy of your ballot if you forget to enclose the secrecy sleeve and your ballot will still count.

#### **WHAT ARE THE ELECTIONS DIVISION'S HOURS OF OPERATION ON ELECTION DAY?**

On Election Day, Clackamas County Elections Division will open at 7:00 a.m. and close at 8:00 p.m.

## Clackamas County Commissioner, Position 4



### Ken Humberston

**Occupation:** Clackamas County Commissioner#4

**Occupational Background:** USMC, law enforcement, firefighter, teacher

**Educational Background:** UCLA, political science; San Diego State, criminal Justice, Baccalaurate

**Prior Governmental Experience:** Clackamas River water, Clackamas County Economic

Development, City Council, Siskiyou Economic Development, School Board, Planning Commission, Fire Board

Three years ago I ran for office. Our county was on the wrong track. I promised Cooperation, communication and common sense. Our voice is being heard. I have contributed positively to a teamwork approach. The results are clear.

I have seen significant progress for Clackamas County. We resolved Stafford, NCPRD and rebuilt relationships with regional partners and cities. Hundreds of units of supported housing are coming online. Roads are now being repaired. Millions in grant funds received. Hundreds of millions in hospital construction funds built new facilities. We are committed to building 2 libraries, a badly needed court house and expanding the sewer plant. We dramatically increased outreach to ALL communities, urban and rural! We are starting an ISP for hi speed internet and Land Bank Authority to clean up industrial sites, bringing in more family wage jobs. We gave the Small Business Center funds for Veterans education, repaired Fair grounds systems and facilities, funded international outreach for trade.

I am most proud of having built the Veterans village, housing 19 veterans in permanent homes and attracting a Crosslaminated Timber manufacturer to Estacada, producing many family wage jobs.

Learn more: [votekenh4ccc.com](http://votekenh4ccc.com)

#### Endorsements:

Gov. Barbara Roberts  
Senator Wyden  
U.S. Senator Jeff Merkley  
Senator Lew Frederick  
Wilda Parks  
Mayor Keith Swigart  
Mayor Sean Drinkwine  
Mayor Tim Knapp  
Councilor Jan Lee  
Council President Brett Sherman  
Tammy Stevens Beaver Creek

Professional Firefighters of Clackamas County  
Tualatin Valley Fire Fighters Union  
Clackamas Sheriffs  
Operating Engineers 701  
NW Oregon Labor Council  
Columbia Pacific Building and Construction Trades Council  
IBEW Local 48  
Joint Council of Teamsters #37  
N.O.W.  
UFCW 555  
Home Builders Association of Metropolitan Portland

Joe Buck  
Jody Carson  
Barbara Iverson  
Ed Gronke  
Rosa Colquit  
David Adams  
Ginny VanLoo  
Emmett Wheatfall  
William Gifford  
Baldwin Vanderbilj

*(This information furnished by Ken Humberston)*

## Clackamas County Commissioner, Position 4



### Mark Shull

**Occupation:** Retired US Military

**Occupational Background:** 25 years military Officer, owner/operator Design/Build company, logger helicopter operations

**Educational Background:** Oregon State University, Bachelor of Science

**Prior Governmental Experience:** U.S. military, House District Captain, Precinct Committee man, Alt Vice Chair 3rd CD

#### KEEP CLACKAMAS COUNTY AFFORDABLE

What I WILL DO as your commissioner:

- MANAGE the departments
- TREAT each tax dollar with respect/responsibility
- RECOGNIZE I am responsible to all residents of the county
- REJECT new regulations, new fees, new revenue streams without a verifiable mandate from the people
- DEFEND individual liberty and property rights
- MANAGE to a budget and proper priorities
- IMPROVE visibility into the workings of the administration
- TRANSPARENCY
- HIGHLIGHT all issues of consequence and eliminate hidden agendas
- BUILD new housing inventory by working to push back Oregon Land Use Law and METRO restrictions
- PUSH for new vehicular capacity on our roads by working with State and Federal agencies
- SUPPORT Oregon forest products industry resurgence

What I WILL NOT do as your commissioner:

- Let departments drive the demand for resources
- Let specific interests drive the consumption of resources
- Initiate programs without verifiable overwhelming public buy in
- Search for ways to take more money from you via taxes, fees, and any non-voluntary method
- Accede to bureaucratic demands/mandates that infringe on property rights
- Interpret that minimal public feedback means acceptance by the public

#### Leadership Commitment Competence

Lt Colonel, Bronze Star, Operation Iraqi Freedom. Background of effective leadership skills, sound judgment and an intense drive for mission accomplishment. I raised my family in Clackamas County, but without new leadership in the county commission, our children may not have the same chances as we did for buying a home and living and working in this county.

As your County Commissioner I will stand up for you the people, your families and your businesses, and work for a brighter future for all of us. NO TIME FOR DELAY.

#### MarkSHULLUSA.com

Proudly Endorsed By: #TimberUnity PAC  
Oregon Right To Life PAC

*(This information furnished by Mark SHULL)*

*The above information has not been verified for accuracy by the county.*

*The above information has not been verified for accuracy by the county.*



## Clackamas County Commissioner, Position 4



### Breeauna Sagdal

**Occupation:** Regional Non-Profit Director, Family Rights Advocate, Media Relations and PR

**Occupational Background:** Small Business Owner, Horse Trainer, Government Affairs, Grassroots Organizer, Legislative Policy Analyst

**Educational Background:** Studied Pre-Med and Behavioral Psychology at PSU. Graduated High School as Valedictorian and Class President

**Prior Governmental Experience:** Board Member of Unified Liberty Coalition, Affiliate of Oregon Liberty Coalition, Lead Policy Analyst, Media Relations Director Advancing Oregon, Communications Director Clackamas F&P, Government Affairs. As a mother and citizen lobbyist Breeauna Sagdal is a well-versed and multifaceted candidate who understands hard work and a balanced budget is the key to success, and has a record of fighting for issues affecting Oregonians.

#### Vote Breeauna Sagdal: It's Time For New Leadership

#### As your County Commissioner Breeauna Sagdal will:

- Place Oregonians and Clackamas residents first!
- Ensure voters get to vote on proposed revenue increases
- Stimulate local economy and businesses
- Order forensic audit of the general fund, and ensure record revenue is budgeted and allocated responsibly
- Protect our land, natural beauty, environment and waterways
- Uphold Second Amendment
- Hold Metro accountable and ensure transparency for a toll-free future
- Invest more money back into our roads and critical infrastructure, only 20% is being reinvested, this must change.
- Support ALL law enforcement
- Fight for judicial equity and due process against warrantless seizures
- Protect life and provide for veterans
- End systemic discrimination and fight for true equity
- Protect our churches and religious freedom
- Constituent involvement, media, night meetings
- Work with local area developers to stimulate housing affordability and house the homeless
- Most importantly, Breeauna Sagdal will uphold her oath of office, and execute her duties with

#### HONESTY-INTEGRITY-HUMILITY

Send career politicians packing, it's time for new leadership!  
Learn more: [www.votesagdal.com](http://www.votesagdal.com).

#### Breeauna Sagdal, Respected and ENDORSED by

- Oregon State Representative Mike Nearman (District 23)
- Oregonians for Medical Freedom
- Oregon Firearm Federation Political Action Committee
- Oregon Tea Party
- Oregon Right to Life PAC
- Suzanne Gallagher Parents Rights
- Dr. Ana Jackson
- Canby City Council Member Shawn Vawig
- Larry & Jo Haverkamp

*(This information furnished by Vote Sagdal PAC)*

*The above information has not been verified for accuracy by the county.*

# Returning Your Ballot

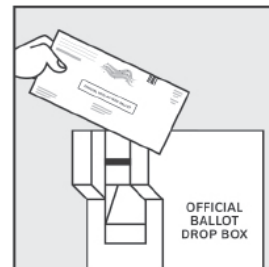
by May 19, 2020 at 8:00 pm

**Mail:** Postage is **NOT** required. All Ballots must be received by 8 pm on Election Day. Mailing your ballot after May 14th is not recommended. Postmarks do not count!



**Drop Site:** 24-Hour Outdoor Ballot Drop Boxes for convenient and secure deposits. Available April 29th until Election Day at 8 pm.

Please check locations on page C-52 as some boxes have been moved.



**Your voted ballot may be dropped off at any official drop site in the State.**

The Secretary of State's drop box locator is:

[www.oregonvotes.gov/dropbox](http://www.oregonvotes.gov/dropbox)

Please contact our office with any questions.

Clackamas County Elections  
503-655-8510

## Clackamas County Sheriff



### Angela Brandenburg

**Occupation:** Undersheriff, Clackamas County Sheriff's Office

**Occupational Background:** Clackamas County Sheriff's Office 29 years; U.S. Oregon Army National Guard 9 years

**Educational Background:** Department of Public Safety Standards and Training; Executive Certificate; Oregon State Sheriff's Association, Command College, Sheriff's Institute

**Prior Governmental Experience:** None

#### Angela Brandenburg For Clackamas County Sheriff

##### The Right Experience

Currently the second in command as Undersheriff, Angela has direct experience in nearly every facet of Sheriff's Office operations, including patrol, as a member of the Special Weapons and Tactics Team (SWAT), and the Search and Rescue Team. She has trained a generation of deputies and currently commands over 250 personnel from four divisions. **We count on the Sheriff's Office to keep us safe. The men and women who do that job every day can count on the leadership of Angela Brandenburg.**

##### Clackamas County Values

Angela is proud to call rural Clackamas County home for the past 34 years, where integrity and looking out for your neighbors are a basic value. She showed those values as Director of Oregon's first comprehensive Family Justice Center, A Safe Place, providing services to victims of domestic violence, sexual violence, human trafficking, elder abuse, vulnerable adult abuse and stalking.

**"When it comes to keeping our community safe, I have a simple philosophy: clear consequences for those who violate the law, caring for victims and preventing crime before it happens with early intervention that saves lives and money. It would be an honor to serve you as Clackamas County Sheriff." - Angela Brandenburg**

##### Proudly endorsed by:

Sheriff Craig Roberts, Clackamas County  
Sheriff Pat Garrett, Washington County  
Sheriff Joseph Kast, Marion County  
Sheriff Matthew T. English, Hood River County  
Multnomah County Sheriff Michael Reese  
Mark Meek, Oregon State Representative  
Jim Bernard, Chair Clackamas County Board of County Commissioners  
Martha Schrader, Clackamas County Commissioner  
Sonya Fischer, Clackamas County Commissioner  
Wilda A. Parks, Milwaukie City Councilor  
Martha L. Spiers, Oregon City School Board  
Gabriella Gomez, Program Manager, Advocate, Latinx Services 18 years

*(This information furnished by Friends of Angela Brandenburg)*

*The above information has not been verified for accuracy by the county.*

## Clackamas County Sheriff



### Lynn Schoenfeld

**Occupation:** Retired, Clackamas County Sheriff's Office Sergeant; Small Business Owner

**Occupational Background:** Twenty six years in Clackamas County law enforcement holding service as Sergeant; Police Officer, Sherwood, Oregon; Business Owner; Electronics Engineer

**Educational Background:** MBA, Portland State University; BS, Oregon Institute of Technology, Electronics Engineer

**Prior Governmental Experience:** Twenty eight years in Oregon Law Enforcement

##### Community Involvement

Oregon City High School volunteer coach; Oregon City Police Reserve Officer; RFPD Volunteer Firefighter/EMT, Keno

##### Family

Married to wife Sue for twenty two years. They have two children: Henry (US Army) and Sydney.

##### KEEPING CLACKAMAS COUNTY SAFE

For the last twenty eight years, Lynn has worked hard to keep our communities safe. We need a sheriff who will tackle rising crime rates with effective community policing. Lynn will address the current livability issues facing our communities. Lynn will work to enhance our current volunteer Search and Rescue program.

##### PROTECTING CLACKAMAS COUNTYS SENIORS

Our seniors are our most honored citizens. We must enhance programs to protect seniors from fraud and abuse. Lynn believes we must be more responsive to the needs of our seniors.

##### RESTORING TRUST AND ACCOUNTABILITY

Lynn is committed to ensuring every taxpayer dollar spent on law enforcement impacts our citizens. Lynn will not tolerate waste, mismanagement, and business as usual. Citizen input is paramount in these critical decisions. Lynn will welcome input from the citizens to address important concerns facing our communities.

##### Proudly Endorsed By:

Ris Bradshaw, Retired Clackamas County Sheriff  
Dick Martin Retired Chief of Police Oregon City Police Department  
Oregon City Police Employees Association  
Oregon City Business Alliance  
Chief Bret Smith, Canby Police  
Chief Ernie Roberts, Sandy Police  
Chief David Bishop, Beaverton Police (Retired)  
Canby Police Officers Association  
Seth Izenberg, M.D. Col (Ret.) Oregon National Guard  
Dan Fowler, Former Oregon City Mayor  
Lori Miles-Olund, Miles Fiberglass

(non exclusive)

"I would be honored to earn your vote and support as your next Sheriff"  
-Lynn Schoenfeld

**More at: [Schoenfeld4Sheriff.com](http://Schoenfeld4Sheriff.com)**

*(This information furnished by Lynn Schoenfeld)*

*The above information has not been verified for accuracy by the county.*

## Clackamas County Sheriff



### Brian Jensen

**Occupation:** Lieutenant, Clackamas County SO 1998-Present

**Occupational Background:** Police Officer City of North Bend 1994-1998; US Army Operation Desert Shield/Desert Storm - Specialist 1990-1993

**Educational Background:** Chemeketa CC, Undergrad, None; Clackamas CC, Undergrad, None; Southwestern Oregon CC, Undergrad, None; North Bend HS, General, Diploma

Undergrad, None; North Bend HS, General, Diploma

**Prior Governmental Experience:** None

My priority as your Sheriff is simple:

**It's you.**

It's protecting you, it's helping you, and it's being a part of our community.

I have over 29 years of combined military and law enforcement experience, and as a combat veteran, I understand the importance of standing up for what is right. I am an experienced, successful leader who is ready to lead your sheriff's office into the future.

I want to be your Sheriff and serve you with a high level of professionalism, integrity, empathy, and morality.

I will be fiscally responsible and transparent. I will repair and build the shattered relationships with other county leaders and the community.

Accountability, both good and bad, will be a cornerstone of my administration.

I will work tirelessly to gain your trust and respect.

The current Sheriff's Office has become stagnant. I possess the transformational leadership style, the drive, and the creativity needed to ensure our office evolves into the future.

I will not settle for mediocrity from myself or my team nor should you accept it from your Sheriff.

I support the 2nd Amendment and while I understand the intent of the Red Flag Law, I am very concerned with its infringement on our constitutional rights. I will fight for all our rights.

I am not a politician, I am a forward thinking cop. A vote for me is a vote for courageous leadership, an honest heart, and a friend in the office of Sheriff.

Change is inevitable and voting for me is the change we need.

I am excited to continue serving you and would be honored to be your Sheriff.

**Brian**

*(This information furnished by Brian Jensen)*

*The above information has not been verified for accuracy by the county.*

## Clackamas County Sheriff



### Roger Edwards

**Occupation:** Employed by Oregon Department of State Police since 1998 (Detective), Clackamas Fire District #1- Civil Service Commissioner (Appointed), President of the Oregon State Fraternal Order of Police, President of Oregon Fraternal Order of Police Foundation, President of Oregon State Fraternal Order of Police Labor Counsel, President of Fraternal Order of Police Willamette Valley Lodge #7 and small business owner.

Lodge #7 and small business owner.

**Occupational Background:** U.S. Department of Justice Federal Bureau of Prisons (Senior Officer), U.S. Department of Veteran Affairs (Police Officer), U.S. Army Military Police, Oregon Army National Guard Military Police, U.S Army Reserve 396th Combat Support Hospital, Oregon Fire District Directors Association (Director) 2014, over 30 years of law enforcement and emergency management experience.

**Educational Background:** Mt. Hood Community College, General Studies, A/A; Sandy Union High School, General, Diploma

**Prior Governmental Experience:** Clackamas Fire District #1 as Civil Service Commissioner-Appointed, Hoodland Fire District #74 District Director-Elected from 2004 to 2014, Governor's Fire Service Policy Council- Reduced Law Enforcement Task Force - Appointed 2014.

In today's society it appears politics has worked its way into our everyday lives. Politics should never be allowed to influence our law enforcement agencies. Over the last thirty years, I have witnessed firsthand the damage politics can have on our emergency management organizations.

The employees of the Clackamas County Sheriff's Office are an amazing group of people dedicated to their community. When elected I, will focus my efforts on ensuring the employees of the Sheriff's Office receive the much needed support they deserve to accomplish their mission.

As Sheriff I will streamline the budget and focus on the core elements of the Sheriff's duties to ensure the maximum benefits to the citizens of Clackamas County. As Sheriff I will plan for the future, build and maintain a positive working relationship with the community, the District Attorney's Office, County Commissioners and those who volunteer their time to support the activities of the Sheriff's Office.

*(This information furnished by Roger Edwards)*

*The above information has not been verified for accuracy by the county.*

## City of Portland Mayor



### Mark White

**Occupation:** Self-employed

**Occupational Background:** Medical education, data storage technology, food cart owner/operator, property management

**Educational Background:** Los Gatos High School, general diploma; Sawyer College of Business, legal secretary, certificate

**Prior Governmental Experience:** Chair, Powellhurst-Gilbert

Neighborhood Association; Co-chair, 2011 Charter Commission; Portland Housing Advisory Commission; Portland/Multnomah Food Policy Council

If you are happy with the way things are in Portland, I'm not your candidate.

If you believe as I do that our government is broken, I hope you will consider me as your choice for Mayor after reading my vision for Portland and what I will do to guarantee you have a government defined and guided by your goals and values.

My time as co-chair of Portland's 2011 Charter Commission made it clear to me that what our government says, and what it does, are often two very different things.

The upcoming Charter Commission will be the only opportunity for another 10 years for Portlanders to define how they want their government structured and to put in place clearly defined boundaries and firewalls that will guarantee accountability and transparency, as well as eliminate the waste of money and resources.

While the Charter Commission is doing its work, I will make sure it is fully supported and protected from government interference. As for governance, I will keep all Bureaus and Offices under the Mayor's Office, but have the entire City Council work together as a team providing oversight and dissecting each aspect of government to remove any waste of money and/or resources. All oversight will take place in Council Chambers, will be open to the public, and recorded for Public Access.

With me as Mayor, you will lead.

For more detailed information on what is mentioned here and much more, please go to my campaign site at — [http://www.southofholgate.com/?page\\_id=144](http://www.southofholgate.com/?page_id=144).

*(This information furnished by Mark for Portland 2020 Campaign)*

## City of Portland Mayor



### Sarah Iannarone

**Occupation:** Teacher, Policy Advisor

**Occupational Background:** Mother (unpaid), Restaurant Worker, Small Business Owner

**Educational Background:** Portland State University, Urban Studies & Planning, Ph.D. (ABD)

**Prior Governmental Experience:** Transportation Bureau & Budget Advisory Committee; Land Use & Transportation Chair, Mt.

Scott-Arleta Neighborhood; Prosper Portland Strategic Planning Committee

**This is no time for politics as usual.**

Now more than ever, Portland needs a hard-working, courageous, compassionate mayor who can bring us together to reshape our city toward greater equity and sustainability.

The current mayor promised us experience and competence, but he's failed to solve our city's problems. The Portland we love could be unrecognizable after four more years on his watch.

**I'm offering you an alternative.**

I grew up in a union family in a factory town and worked my way through school while raising my family. I know anything is possible when we come together and work hard but we need **a leader who believes in the power of community with the right values, practical experience, professional know-how, and a sense of optimism to see us through.**

My small-donor campaign means that in City Hall, **I'll fight for everyday Portlanders in public, not for big-money donors and corporate lobbyists behind closed doors.**

I'm endorsed by powerful grassroots organizations like **Our Revolution, Sunrise Movement, and The Street Trust Action Fund** and greenlighted by **Basic Rights Oregon Equality PAC Greenlight** and **Oregon Smart Growth.**

I'm the only leading candidate championing these progressive solutions:

- **Green New Deal for Portland** creating good-paying union jobs while regaining global climate leadership
- **Housing for All Strategy** for more affordable housing, protecting renters, distributing homelessness solutions across neighborhoods, and building age-friendly communities
- **Public Safety Reforms** saving taxpayers money while protecting Portlanders through police accountability, safer streets and transit access, and safeguarding immigrants and refugees
- **Representative Government** we can trust to serve everyone, including Communities of Color and residents of East Portland
- **Coordinated Disaster Response** including investments in education, preparedness, and infrastructure

### Learn more about Sarah's policies and supporters ###

[sarah2020.com](http://sarah2020.com)

*(This information furnished by Friends of Sarah for Portland)*

*The above information has not been verified for accuracy by the county. The above information has not been verified for accuracy by the county.*

## City of Portland Commissioner, Position 1



### Carmen Rubio

**Occupation:** Executive Director, Latino Network

**Occupational Background:** Senior Policy Advisor, Commissioner Nick Fish; Director of Community Affairs, Mayor Tom Potter; Policy Advisor, County Commissioner Serena Cruz

**Educational Background:** University of Oregon, BA

**Prior Governmental Experience:** Commissioner, Higher Education

Coordinating Commission; Portland Community Investment Fund Advisory Board; Portland Housing Advisory Commission

**“I’ve worked with Carmen for years on issues ranging from criminal justice to education and immigrant rights. Carmen is the hardworking, collaborative leader our city needs.”**  
-Senator Ron Wyden

**Safe, Stable Housing for All.** Leaders at every level of government must work together on the number one challenge: our housing shortage and homelessness crisis.

- We should deploy our bond dollars to build more affordable housing now.
- We need reasonable eviction protections and more rent assistance to prevent homelessness in the first place.
- We need supportive housing with mental health, addiction treatment, and other services for the chronically homeless.

**Climate Action Now.** Portlanders want more to be done to fight climate change and our investments must reflect that. Our dollars must fund sustainable practices, create demand for renewable energy, and preserve and grow parks and other green spaces.

**Invest in Every Corner of Portland.** Investments in our workforce, roads, sidewalks, and buses can’t just be about downtown. I will always fight for the parts of our city that have been underserved, like east of 82nd and outer NE Portland.

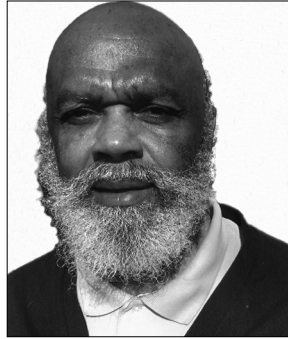
**A More Representative Government.** I will work to change Portland’s form of government so when you look at City Council, you see your neighborhood and your community reflected back at you.

#### Proudly endorsed by:

Senator Ron Wyden  
Congressman Earl Blumenauer  
Governor Barbara Roberts  
Multnomah County Chair Deborah Kafoury  
Portland Commissioner Jo Ann Hardesty  
Gresham Councilor Eddy Morales  
NARAL Pro-Choice Oregon PAC  
Oregon League of Conservation Voters  
Asian Pacific American Network of Oregon  
Community Alliance of Tenants Action Fund  
Portland Association of Teachers  
Northwest Oregon Labor Council  
AFSCME Local 189  
UFCW Local 555  
SEIU  
Basic Rights Oregon Equality PAC Greenlight  
Full list: [www.carmenforportland.com](http://www.carmenforportland.com)

*(This information furnished by Carmen for Portland)*

## City of Portland Commissioner, Position 1



### Isham (Ike) Harris

**Occupation:** Pastor, School Bus Driver

**Occupational Background:** US Navy; Letter Carrier, US Postal Service; Prison Ministry, Sheridan Federal Prison

**Educational Background:** Carter High School, Brandon Mississippi; Portland Community College

**Prior Governmental Experience:** None

AS CITY COMMISSIONER ISHAM PLANS TO:

1. SUPPORT THE CITY CLUB PLAN TO RESTRUCTURE PORTLAND CITY GOVERNMENT, FROM MAYOR COMMISSIONER TO MULTIMEMBER DISTRICTS WITH A CITY MANAGER.

2. ENGAGE BIG BUSINESS AND BIG TECH IN THE TRANSFORMATION OF EMPTY BUILDINGS TO CENTERS OF HOPE FOR PORTLAND HOMELESS POPULATION, USING THE WAPATO PRISON AS A MODEL. I APPLAUD THE RECENT TRANSFORMATION FROM A PRISON TO THE “BYBEE LAKE HOPE CENTER”

3. CLEAN-UP ALL GARBAGE FROM OUR STREETS:

4. COLLABORATE AT FEDERAL, STATE, AND LOCAL GOVERNMENTS TO FIND SOLUTIONS FOR THE HOMELESS YOUTH CRISIS:

5. MAKE EVERY EFFORT TO CLEAN UP PORTLAND DIRTY AIR, ACCORDING TO THE NATIONAL AIR TOXICS ASSESSMENT PORTLAND AIRSHED IS BURSTING WITH A TOXIC STEW CONSISTING OF DOZENS OF HEAVY METALS AND CHEMICAL COMPOUNDS.

6. ENGAGE THE CITY OF PORTLAND IN RACE TALKS WITH THE INTENT OF REVISITING PORTLAND RACIST HISTORY THEN MOVING FORWARD WITH EQUITABLE ECONOMIC OUTCOMES.

7. ENCOURGE THE BUILDING OF A NEW BRIDGE FROM WASHINGTON TO OREGON BEFORE 2025, PORTLAND IS THE 10 FASTEST GROWING METROPOLITAN AREA IN THE U.S.

8. ENGAGE COMMUNITY, PARENTS, STUDENTS, LAW ENFORCEMENT WITH DISCUSSIONS ON HOW TO ENCOURGE GRADUATION ON TIME.

9. STRENGTHEN THE NEIGHBORHOOD ASSOCIATIONS BY ENCOURGING MORE PARTICIPATION FROM PEOPLE OF COLOR.

HEAVENLY FATHER DELIVER OUR NATION, THE WORLD AND PORTLAND IN PARTICULAR FROM THE CORONAVIRUS PANDEMIC, GIVE FAITH AND SWEET CONSOLATION TO EACH OF OUR CITIZENS, DELIVER YOUR PEOPLE FROM FEAR AND DESPAIR IN CHRIST JESUS NAME AMEN.

PSALMS 127:1. WITHOUT THE HELP OF THE LORD IT IS USELESS TO BUILD A HOME OR TO GUARD A CITY.

*(This information furnished by Isham Harris)*

## City of Portland Commissioner, Position 1



### Alicia McCarthy

**Occupation:** Naturopathic Physician

**Occupational Background:** Primary Care Naturopathic Physician; Emergency Department Technician; Ambulance Operator; Surgical Recovery Technician

**Educational Background:** National University of Natural Medicine, Doctorate of Naturopathic Medicine; California State University of Fullerton, Kinesiology, B.S.

**Prior Governmental Experience:** Naturopathic Medical Student Association; Federal Advocacy Campaign for American Academy of Naturopathic Physicians

Alicia McCarthy is NOT a politician, and she would NOT label herself as an activist either. She is, however, someone who deeply cares about our community and everyone in it. She is a small business owner, a working professional, and a proud mother. Alicia recognizes a need in our local government for a voice of common sense. Portland needs a voice that can be sensitive and considerate of all arguments, but is dedicated to the health and development of our growing city. As a primary care physician she makes critical decisions daily and is ready to bring this experience to city government.

Portland has experienced incredible growth over the last ten years. Our population has increased with nearly 7,000 residents every year since 2010. During this exciting period of growth, we must focus on a "Back to Basics" approach to local government; in order to maintain a balanced society. Alicia is a common sense candidate that will focus on the fundamental needs that create a balanced and vibrant community for all.

Platform:

1. Government: Restructure local government to include a city manager and representative from multiple districts.
2. Transportation: Lower carbon emissions through incentive and innovation **not** penalties.
3. Education: "**All In**" approach for our future generations.
4. Infrastructure: Invest in a robust infrastructure that will support a growing community.

Common sense candidate with a back to basics approach. Here to moved Portland forward.

-Alicia McCarthy

*(This information furnished by Alicia McCarthy)*

## City of Portland Commissioner, Position 1



### Mary Ann Schwab

**Occupation:** Retired High School Secretary

**Occupational Background:** Volunteer Community Advocate Recognized by Mayor Bud Clark, Spirit of Southeast Portland Award; Multnomah County Chair, Ted Wheeler, The Gladys McCoy Lifetime Achievement Award; Mayor Sam Adams, Spirit of Portland Award shared with WA-MO Advisory Committee;

Commissioner Amanda Fritz, Spirit of Portland Award – Dare to Dream too!

**Educational Background:** Marylhurst University

**Prior Governmental Experience:** Elected Chair, Inner-Southeast Coalition 1978, Sunnyside Neighborhood Association, Southeast Uplift Board of Directors. Served on Advisory Committees. Spearheaded Self-Help Grants, SES Playground, Belmont ADA ramp/front foer, Benson Bubbler.

### A TENACIOUS ADVOCATE FOR RESPONSIBLE AND TRANSPARENT CITY GOVERNMENT

SE Portland resident since 1971, deeply involved in local politics and issues that affected the community. I cannot remain silent and watch things happen that do not benefit city residents, the common good and the environment. Your vote will enable me to tackle the following issues:

#### CITY GOVERNMENT

I support changing our commission form of government to a geographical representation based on the League of Women Voter's study: ***The City That Works: Preparing Portland for the Future, September 2019.***

#### MAINTAINING PUBLIC PROPERTY IN PERPETUITY

I support maintaining city properties for the benefit of current and future Portlanders. These common lands include parks, community centers, water resources, school campuses, and other properties purchased with taxpayer dollars.

#### PORTLAND COMMUNITY REPRESENTATION

I will work to give Portland residents a framework for making their voices heard. My approach will focus on grass-roots representation by geographic district.

#### LAND USE AND EQUITY

Developers with deep pockets have more influence over City Council land use decisions than do neighborhood people. I will work to ensure a level playing field for residents at the local level.

#### PORTLAND TRANSPORTATION SYSTEMS

I support all modes having an equitable voice in transportation planning. As Portland grows, having a good transportation strategy for the movement of people and goods is vital.

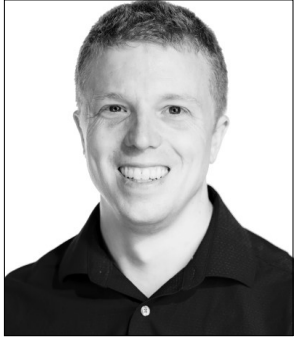
#### NEVERTHELESS SHE PERSISTED

[maryannschwab.weebly.com](http://maryannschwab.weebly.com)

*(This information furnished by Mary Ann Schwab)*

*The above information has not been verified for accuracy by the county.*

## City of Portland Commissioner, Position 1



### Timothy DuBois

**Occupation:** Lead Carpenter;  
Urban planner

**Occupational Background:**  
Woodworker

**Educational Background:**  
Masters of Urban and Regional  
Planning (June 2020), PSU

**Prior Governmental Experience:**  
SMILE neighborhood association  
Board member

**Prior Volunteer Experience:** Portland Clean Air Board member

"DuBois stood out for [his]... pragmatic approach to land use, housing, and transportation" *Roger Valdez, Forbes 3/11/2020*

#### MEET TIM

Tim fears for the effect industrial pollution has on his sons, works hard to create solutions for affordable housing, and advocates for parks. He is a student of urban planning who stands for fiscal responsibility and common-sense change.

"I worked with Tim on a major construction project, and found he is able to coordinate scheduling, maintain a budget, and do the work necessary to get the job completed properly and on time"  
Michael Church, Contractor

#### HOUSING

Every Portlander is or knows someone who struggles to make ends meet. With so many teetering on the brink of homelessness during calm times, any disaster can spiral families out of a home. The lack of affordable housing is more than a humanitarian crisis, it is an economic crisis for the city. Portland must support builders to expand affordable housing. As a City Council member, Tim will reduce red tape and prioritize providing quality, affordable housing for all Portlanders.

#### SAFE PARKS

Tim sees the benefit of public green spaces. His ideas to create additional revenue streams can be used to revitalize aging structures and facilities, and to keep open beloved family hangouts, like Columbia Pool.

"Tim was always fully engaged with our discussions and demonstrated a genuine open-mindedness even when varying perspectives were presented. His creativity, common sense and understanding . . . will serve him well in the Portland City Council"  
Nicolai Kruger, Nicolai Kruger Studios

#### A VOTE FOR TIM IS A VOTE FOR COMMON SENSE CHANGE

##### ENDORSED BY:

Portland Clean Air

Oregon Progressive Party

Yoshie Yager, Yager Media

Jay Lane, Jack of the Woods

Darrin Amico, Amico Group

*(This information furnished by Committee to Elect Tim DuBois)*

*The above information has not been verified for accuracy by the county.*

## City of Portland Commissioner, Position 1



### Candace Avalos

**Occupation:** Administrator /  
Student Government Advisor,  
Portland State University

**Occupational Background:**  
Educator

**Educational Background:** James  
Madison University, Modern  
Foreign Languages, B.A.; James  
Madison University, Higher  
Education Administration, M.Ed.

**Prior Governmental Experience:**  
Acting Chair, Citizen Review

Committee. Multnomah County Democrats Precinct  
Committeeperson HD45

#### A New Generation of Leadership

As a first generation "Blacktina", daughter of Guatemalan immigrants and African Americans from the South, my values about democracy are rooted in the experiences of my multiracial family. I represent a generation that feels left behind by our economy and left out of the conversation. **I have built my career on strategic, compassionate leadership, and I'm ready to bring a fresh perspective to City Hall.**

#### A Functional Government is Possible

Portland used to think of itself as a big small town, but now we have big city problems. We need elected officials to represent the communities they live in, not just the bureaus they oversee. **We must finally end our dysfunctional form of government.**

#### Addressing Houselessness is Possible

Today "affordable housing" is not affordable at all, and we can't build it fast enough. We must work across bureaus to **sweep away the regulations** that create barriers to affordability, and ensure that we have a **robust, well-funded rental assistance program**. Our houseless community needs essential services like water and sanitation immediately. We must **increase frontline services with street-based case management systems** to help those in crisis get the support they need now.

#### Police Accountability is Possible

As acting chair of a police accountability board for the city, I know we ask our understaffed police bureau to do the tough job of keeping us safe, but **there is no excuse for the broken systems that do not hold problem officers accountable**. It's time to rebuild trust between the people of this city and the officers sworn to protect them.

#### Progressive Values. Pragmatic Leadership.

#### A Better Portland is Possible

See our growing list of endorsements and supporters at  
[www.candaceforportland.com](http://www.candaceforportland.com)

*(This information furnished by Friends of Candace Avalos)*

*The above information has not been verified for accuracy by the county.*

## City of Portland Commissioner, Position 2



### Dan Ryan

**Occupation:** Candidate

**Occupational Background:** CEO, All Hands Raised, 30 Years of Leadership in non-profits: Education, arts, healthcare and youth advocacy.

**Educational Background:** University of Oregon, Degree; Roosevelt High School, Diploma

**Prior Governmental Experience:** Member, Portland School Board 2005 - 2008

Our city was in crisis before this pandemic and now we can't hide it.

It is time to come together and rebuild our city and make it one that works. Most voters were already upset with the lack of progress prior to the pandemic on critical crises like housing, homeless and transportation.

As the Chair of the **Portland School Board** and later as **CEO of All Hands Raised**, I brought people together to tackle big challenges like our abysmal high school graduation rates. Working together, we increased graduation rates 11.5% and for students of color, we accelerated the results, 15.5%. Thousands of Portland youth now have a brighter future!

"I've known Dan for more than a decade. He always has kept North Portland front and center in his work. Dan is glue, he brings people together. Our city will be in good hands with Dan's seasoned leadership," House Speaker **Tina Kotek**

"We need leadership! Dan knows how to build the bridges between the private and public sectors. Dan is the right fit at the right time to help us innovate out of this crisis." **Duncan Campbell**, Founder Friends of the Children

"Dan leads with inclusion and inspiration. I've been on many boards, yet never with a CEO with the ability to align us and play to our strengths. He is an elegant, humble and driven leader!" **Karis Stoudamire-Phillips**, Director of Corporate Responsibility

As a gay man living with HIV since 1986, I have been fighting the status quo my entire career. If you think our city is well run, vote for one of my opponents, who have been in charge here the last 20 years. If you believe now, like never before merits change, I ask for your vote.

*(This information furnished by Dan Ryan)*

## City of Portland Commissioner, Position 2



### Margot Black

**Occupation:** Co-Chair Portland Tenants United; Community Organizer

**Occupational Background:** College Mathematics Instructor; Director, Symbolic & Quantitative Resource Center, Lewis & Clark College

**Educational Background:** University of Oregon, M.A. Mathematics

**Prior Governmental Experience:** Commissioner, Portland Rental Services Commission

**In a moment of historic crisis, we need courageous and empathetic leaders who will fight for the change we need.**

I am a single mother, Democratic Socialist, community organizer, a fierce and effective policy advocate, and a creative problem solver with a 15-year career teaching college mathematics.

**We need systems that keep people from falling through the cracks.**

I was born into the foster care system and raised by my grandmother. I became a mother at 19. Six months later, I experienced the destabilizing trauma of a no-cause eviction.

When Portland's housing crisis reached a fever pitch in 2015, I co founded Portland Tenants United and was the architect of Portland's historic Renter Relocation Assistance Ordinance in 2017, which effectively ended an epidemic of building wide evictions and price gouging for renters, and is now being replicated in cities across the U.S.

**The Movement Candidate.**

I have a proven track record of standing up to establishment special interests to get results.

I'm endorsed by **Our Revolution**, Bernie Sanders' grassroots political organization, and have funded a strong campaign primarily through small donations from poor and working class Portlanders.

**A Brighter Future.**

Since the Coronavirus outbreak, I've led by successfully organizing to halt evictions across the state and leveraged my campaign to push for comprehensive relief from the economic fallout.

To help guide us through this crisis, I will be a powerful voice for economic recovery that prioritizes the people and planet over profit. I will fight for real rent control, a Green New Deal, universal childcare, taxing vacant apartments in order to house the houseless, and taxing the rich to fund parks, transportation and develop a robust social safety net.

**Endorsements:**

Our Revolution

Visit [votemargot.com](http://votemargot.com) for a complete list.

*(This information furnished by Margot Black)*

*The above information has not been verified for accuracy by the county.*



## City of Portland Commissioner, Position 2



### Tera Hurst

**Occupation:** Renew Oregon, Executive Director

**Occupational Background:** Deputy/Chief of Staff, Portland Mayor Charlie Hales; Chief of Staff, Oregon Legislature; Community Organizer, Basic Rights Oregon; Sales Manager, Auto Dealership

**Educational Background:** Bachelors Social Work, PSU

**Prior Governmental Experience:** N/A

**Community Service:** Red Cross (Katrina shelter), CASA, Sunnyside K-8, Oregon Food Bank

**Dear Voter:** As a single parent working full time, I know the struggle of stretching paycheck to pay bills and provide for my child. a supportive community and services can change your life, because they sure did for me—now 23 years sober. I hope to earn your vote. —Tera

**Tera Hurst: Climate champion. Problem solver. Bold Leader.**

**Crisis Response:** COVID-19 has exposed major holes in our safety net. Tera's plan will ensure we're building back stronger, helping workers get jobs, and helping small businesses open again.

See the plan: [TeraForPDX.com](http://TeraForPDX.com)

**Housing and Affordability:** Thousands of people live on our streets and even more are getting pushed out of the city. This is unacceptable. Tera will:

- Extend moratorium on evictions and foreclosures
- Invest in more affordable and supportive housing units
- Expand rent vouchers for families and seniors helping them keep their homes

"Tera is focused on a more equitable and secure future for those who need it most." **Oregon House Speaker, Tina Kotek**

**Climate Crisis:** Tera led Oregon's most sweeping climate action yet. Now, Portland needs a Green New Deal — creating thousands of jobs that protect us better from global warming.

"Tera is a hero in our movement to tackle climate change. She is exactly the leader we need in City Hall" --**Doug Moore, Executive Director, Oregon League of Conservation Voters**

#### **Tera Hurst for Portland City Commission. Endorsements include:**

Oregon League of Conservation Voters  
NARAL Pro-Choice Oregon PAC  
Basic Rights Oregon- Greenlight  
Oregon Recovers PAC  
Asian Pacific American Network of Oregon (APANO)  
Antoinette Edwards, Former Director, Office of Youth Violence  
Prevention for the City of Portland  
Former Mayor Charlie Hales  
Reyna Lopez, Oregon's Farmworkers Union  
Multnomah Commissioner Jessica Vega Pederson  
State Senator Kathleen Taylor

(partial list)

*(This information furnished by Tera for PDX)*

## City of Portland Commissioner, Position 2



### Ryan A Farmer

**Occupation:** Attorney/Candidate

**Occupational Background:** Software Developer (web development, database development, decisioning software); Attorney (civil litigation, patent prosecution).

**Educational Background:** Lewis & Clark Law School, J.D., specialization in Intellectual Property; Southern Methodist University, B.S. Computer Science, B.A. Applied Mathematics.

**Prior Governmental Experience:** RPCV, Peace Corps Albania, Burrell Municipality (two years)

#### **Portland, we can do more!**

Our city has stalled. As our city has grown, it has become increasingly unlivable. Small changes will not solve our biggest problems: unaffordable housing, inefficient transportation, and the homelessness epidemic. We must have the vision and the will to make fundamental changes.

We can do more...

#### **... to make renting affordable by scaling rent to income.**

A landlord can always choose to not be a landlord, but a tenant can never choose to not be a tenant. This imbalance can be corrected by making rent a percentage of the market value of the rental equal to the percentage of the median income the tenant earns.

#### **... to make transportation efficient, clean, affordable, and safe by separating vehicle types across different roads and making public transit fareless.**

Our roads have reached their capacity for drivers. We must look to other modes of transportation to efficiently move around the city. By dedicating our local roads to small personal vehicles and fareless public transit, we increase the capacity of such roads, allowing for more people to move around the city more quickly and efficiently, while maintaining thoroughfares for large vehicles.

#### **... to ease the burden of homelessness by identifying safe zones for our homeless residents.**

The city cannot solve homelessness because it stems from fundamental problems across all of society. The city must focus on balancing the presence of homeless residents with our businesses and other residents, while advocating to the Governor and Legislature to address the causes of homelessness.

#### **Fair Housing, Fareless Transit [www.farmerforportland.com](http://www.farmerforportland.com)**

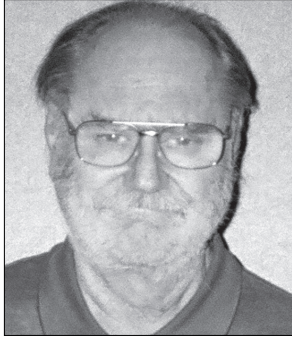
**I am going to work to do more, and I hope you will join me.  
THANK YOU for voting!**

*(This information furnished by Ryan A Farmer)*

*The above information has not been verified for accuracy by the county.*

*The above information has not been verified for accuracy by the county.*

## City of Portland Commissioner, Position 2



### Terry Parker

**Occupation:** Retired

**Occupational Background:** Customer Relationship Manager, National Account Rep (Yellow Pages), supply center management

**Educational Background:** Madison HS, Portland; PCC

**Prior Governmental Experience:** Neighborhood Association Board Member, 82nd Avenue CAC 2017, Banfield Transitway CAC (Chair) 1970s

**REPRESENTATION:** Self-sufficient working class families with modest incomes and senior citizens on fixed incomes are having more and more of those incomes reduced with new and increased taxes. Their voices need to be heard at City Hall.

**TRANSPORTATION:** The city needs to stop removing and narrowing full service travel lanes on major streets thereby increasing congestion, fuel consumption and emissions. To make transit work better, entire streets need to flow better. Enhanced street lighting and crosswalks must be a safety priority. PBOT advisory committees must become inclusive of taxpaying motorist representation.

**RESIDENTIAL INFILL (RIP):** Per HB2001 and the Portland Comprehensive Plan, higher densities are allowed in town centers and along corridors. Duplexes, triplexes and quadplexes are allowed in single family home neighborhoods. Increasing density will target demolishing the most affordable homes. New construction almost always costs more. The greenest buildings are the ones already built. Pilot projects to identify affordability and impacts need to take place in neighborhoods that want more density. Higher densities citywide should be reconsidered. Adequate off-street parking with charging connectivity for electric cars needs to be required with all new residential developments so streets don't become fulltime car storage lots.

**CIVIC ENGAGEMENT:** Portland's world renowned framework of Neighborhood Associations needs to be strengthened and expanded as per the 2016 Auditor's Report. This includes giving formal recognition to community and identity groups that abide by the same standards of non-discriminatory practices, accessible open meetings and maintaining transparent minutes. The Civic Life budget needs to be increased to cover the expansion.

**HOMELESSNESS:** Provide a hand up towards self-sufficiency instead of everlasting handouts, utilize existing infrastructure such as Wapato for programs that can demonstrate results, and compassionate enforcement so Portland's notoriety is not that of tents and trash.

The Common Sense Candidate

*(This information furnished by Terry Parker)*

## City of Portland Commissioner, Position 2



### Julia DeGraw

**Occupation:** Nonprofit/Policy Consultant

**Occupational Background:** Nonprofit Executive Director

**Educational Background:** Environmental Studies & Sociology, B.S.

**Prior Governmental Experience:** Portland Honest Elections (campaign finance reform); Water Protection Measure, Hood River County

#### WITH NEW LEADERSHIP, WE CAN CHANGE CITY HALL

"Julia's policy expertise and her collaborative approach are key reasons why she has my endorsement." -**Jo Ann Hardesty, Portland City Commissioner**

"Considering the public health crisis we're facing, it's more important than ever that we elect leaders like Julia, who have a proven commitment to working with impacted communities to solve problems; rethinking systems that perpetuate inequality; and taking action to support our public schools, workers, and public services." -**Suzanne Cohen, President, Portland Association of Teachers**

Throughout my career, I've brought together diverse coalitions to create progressive change—including the victorious fight to stop Nestlé from bottling our public water!

#### My Bold, Community-Focused Vision:

- **Permanently affordable housing for low income residents and seniors on fixed incomes**
- **Supportive housing for chronically houseless people struggling with mental health or addiction**
- **More equitable distribution of transportation dollars**
- **Increase investments in community centers so everyone can rely on vital services, like affordable childcare**
- **Rebuild trust between police and residents and improve police accountability**
- **Affordable municipal broadband internet for all**
- **No corporate campaign cash**
- **Support a strong, unionized, local workforce**

#### Democratize City Council

Creating geographic City Council districts means we'd elect people who represent every part of our city—allowing elected officials to prioritize legislation and constituency services that benefit Portlanders, rather than the day-to-day management of bureaus. I will support a community-led process to address this systemic lack of representation.

#### Supporters!

**Jo Ann Hardesty**, Portland City Commissioner  
**AFSCME Local 189**, Portland Municipal Workers  
**Portland Association of Teachers**  
**PROTEC17**, Professional & Technical Employees  
**Street Trust Action Fund**  
**Oregon Progressive Party**  
**Portland Community College Faculty & Staff Unions**  
**Sunrise Movement PDX**, climate justice organization  
**Bill McKibben**, Author, Educator & Activist  
**Bill Bradbury**, former Oregon Secretary of State  
**Khanh Pham**, Candidate, House District 46  
**Basic Rights Oregon Equality PAC Greenlight**

[www.julia4pdx.com](http://www.julia4pdx.com)

*(This information furnished by Elect Julia DeGraw)*

The above information has not been verified for accuracy by the county. The above information has not been verified for accuracy by the county.

## City of Portland Commissioner, Position 2



### James (Jas) Davis

**Occupation:** Small business owner, Awakenings Wellness Center

**Occupational Background:** Owner, CASCADIA Communications; public affairs work involving communities in policy processes and helping small businesses reduce air pollution

**Educational Background:** MPS, Graduate School of Political Management (now at GW); BA, Seattle University

**Prior Governmental Experience:** Chair, Multnomah County Citizen Involvement Committee; oversaw community participation in county policy and budgeting processes. Legislative Aide to Senator Al Bauer

**PERSONAL:** Jas is a parent, a progressive and a small business owner who has developed wellness centers/health clinics in East Portland. He's passionate about bringing greater health and well-being to our community.

**BOARDS AND COMMUNITY SERVICE:** Board Member, Equal Vote Coalition. Past Chair, Portland Friends School. Past volunteer with Southeast Uplift, KBOO Radio, Jobs with Justice. Organizer for universal health care, consent culture, and voting reform.

Jas works to help communities be healthier and happier and is committed to listening and making sure all voices are at the table.

#### Jas' Vision for Portland in 2020... Let's work to:

- **Strengthen Democracy** with a larger, more diverse city council elected by districts using **STAR Voting**
- Commit to **Bold Climate Action Now** with a focus on creating **Local Food Resilience!**
- Put **Housing First** with more **affordable and innovative housing strategies** for the houseless and all Portlanders
- **Prioritize small businesses, co-ops and homebuyers** with a **Public Bank** and **Community-Benefit Financing**
- **Dismantle White Supremacy & defend LGBTQ Rights**
- Implement a **Happiness Index** and focus on **Public Well-Being** approaches over failed punitive measures
- Fully fund **Public Parks**, including a **new in inner East Portland Community Center**
- **RESIST the un-democratic agendas of the current Administration and large corporations** - Let's start taking care of regular people instead of big corporations

For more info and short videos on these issues, go to [Portland2020Vision.org](http://Portland2020Vision.org)

Our campaign is people-powered. NO Corporate money or PACs!

**Together, We CAN create a more Resilient Portland that works for all of us!**

*(This information furnished by Portland 2020 Vision)*

## City of Portland Commissioner, Position 2



### Jack Kerfoot

**Occupation:** Energy expert on national radio and TV

**Occupational Background:** Veteran, Scientist, Executive, Author

**Educational Background:** Oklahoma University, Geophysics, BSc.; Penn State, Executive Program

**Prior Governmental Experience:** None

**EXPERIENCE** – I began by working minimum wage jobs, served with the 101st Airborne Division in Vietnam, worked my way through university and built a career in the energy industry. My style is to listen and collaborate to solve problems. My success at reinvigorating companies makes me a sought-after specialist in turning around organizations.

Portland is **heading in the wrong direction** and needs a turn-around specialist for:

- **Homelessness** – Our city isn't coordinating the hundreds of nonprofits working to address homelessness in Portland. This is failed leadership of our city council.
- **Affordable Housing** – Our city's new fees and policies are dramatically increasing building costs and rental rates.
- **Safe Streets** – Traffic fatalities are increasing. There are solutions that can save lives.
- **Environment** – Portland's Zenith Oil Terminal is an impending environmental catastrophe.
- **Neighborhood Associations** – We need commissioners that will listen and collaborate with our neighborhood associations.
- **Fiscal Responsibility** – City projects are all too often over budget. Poorly planned multi-million-dollar bonds are causing property taxes to soar.
- **City Government** – I support modernizing our city charter and also pledge to hold regular town hall meetings across our entire city to ensure your voice is heard.

**SUPPORTERS** – My supporters are retirees, students, blue collar workers and professionals that live all across our city, including:

- **Dmitriy Sashchenko – Small Business Owner**
- **Dr. Don Baham – Television Producer**
- **Valentina Cates – Nurse**
- **Randy Dagle – Retired**
- **Matt Haehlen – Dentist**
- **Steve Holgate – Retired**
- **Abbas Houshmand-Shafii – Retired**
- **Dr. Michelle Kubota – Professor**
- **Sheryl Landis – Administration PCC**
- **Paul Lewandowski – Facilities PCC**
- **Judy Low – Postal Employee**
- **Ron Milligan – RE/MAX Select**
- **David Potts – Member of the Lents Neighborhood Livability Association, President of East Side PSAC and President of the Furniture Doctor**
- **Donald Shaw – Energy Advisor**
- **Robert Stafford – Retired Teacher**
- **Ron Stokes – Retired**

Learn why people across our city are supporting me at [www.JackKerfoot2020.com](http://www.JackKerfoot2020.com).

*(This information furnished by Jack Kerfoot for Portland City Commissioner)*

## City of Portland Commissioner, Position 2



### Sam Chase

**Occupation:** Metro Councilor

**Occupational Background:** Executive Director, Coalition of Community Health Clinics; affordable housing nonprofits

**Educational Background:** Claremont Colleges, Pitzer

**Prior Governmental Experience:** Chief of Staff, City Commissioner Nick Fish; Housing Advisor, Gretchen Kafoury

COMMUNITY SERVICE: Oregon League of Conservation Voters; Northwest District Association; Coalition for a Livable Future

#### Serious Leadership for Serious Times

With the coronavirus impacting all of us, Portland needs leaders with the experience to rebuild our economy, protect the vulnerable and those impacted by job loss, and sustain our long-term health and quality of life.

With your vote, I'll apply my executive public health leadership and deep experience in homelessness and economic development to address long term needs and immediate challenges of the pandemic.

#### Strengthen Action on Housing and Homelessness

At Metro, I led regional efforts to expand housing and shelter. In Portland we must:

- Fund best practices to get people into safe, stable housing.
- Reduce cost and improve accountability to produce more affordable housing.
- Create living wage jobs that keep people from slipping into poverty and housing insecurity.

As a teenager I lost my father to mental illness and drug addiction. I'm deeply committed to solutions that address conditions contributing to chronic homelessness.

#### A Healthy, Economically Vital, Inclusive Portland

I've built partnerships creating jobs and apprenticeship programs and delivered low income TRIMET fares. I've led Metro's efforts to protect parks and nature. I'm fighting for living wage jobs for a sustainable city and economy:

- Expand job programs for workers impacted by the pandemic.
- Restore and sustain Portland Parks and Recreation, including pools, community centers, and recreation programs.
- Win free Youth Transit Passes.
- Invest in climate-smart congestion relief, pedestrian and bike safety, and earthquake-proof bridges.

#### We endorse Sam!

Governor Barbara Roberts  
Multnomah County Chair Deborah Kafoury  
Metro President Lynn Peterson  
Metro Councilor Bob Stacey  
Portland Clean Air  
Teamsters #37  
Asian Pacific American Network of Oregon  
The Street Trust Action Fund  
Basic Rights Oregon Equality PAC Greenlight

#### See more at

[www.samchaseforportland.com](http://www.samchaseforportland.com)

(This information furnished by Sam Chase for Portland)

## City of Portland Commissioner, Position 2



### Ronault (Polo) Catalani

**Occupation:** Civil rights lawyer; immigrant integration consultant; journalist

**Occupational Background:** Legislative children's advocate; urban community developer; neighborhood activist; reporter and media commentator

**Educational Background:** Howard University, RHS  
Community Lawyer Fellow; Willamette University, Law School; UO, College of Liberal Arts

**Prior Governmental Experience:** City of Portland Public Involvement Advisory Council; New Portlander Policy Commission, staff; Oregon Department of Transportation, Minority and Women's Enterprise; Oregon Children's Services Division; Governor's Children's Agenda for the 1990s

**For 36 years, I've designed and advanced successful government/community partnerships. Our collaborations combined the resources of responsive city, county, and state agencies, 26 vigorous ethnic minority communities, robust schools and businesses. These partnerships delivered better shared neighborhoods, and better shared futures.**

#### MY CITY POLICY PRIORITIES

- Housing, transportation, and greenspace planning integrated into an equitable, single regional strategy;
- Local environmental stewardship during our global crisis;
- Police accountability AND strong public support for our police officers;
- Integrating all Portlanders into the life of our robust city.

**From 2008 to 2018, I founded developed the City of Portland's immigrant integration programs. During that decade, our community-led partnerships brought home 24 national, state, and local honors.**

**I will bring these demonstrated partnerships' effectiveness to City governance**

#### ENDORSERS

**Tom Potter & Karin Hansen**  
Portland's former Mayor and First Lady

**Rev. Dr. Rodney Paige**  
Oregon's international humanitarian

**Kathleen Grundle Saadat**  
Oregon civil rights elder

**Sho Dozono**  
Oregon transpacific business and civic leader

**Jaime J Lim**  
Oregon transpacific business leader; newspaper publisher, former PCC board

**Ruth Jensen (Tlingit)**  
Portland political activist, Native American elder

**David Barrios (Mescalero Apache)**  
Urban Indian elder. Retired Portland Policing officer.

**Wajdi Said**  
Oregon's interfaith healer and unifier

**Pastor JW Matt Hennessee**  
Senior servant of Vancouver Avenue First Baptist Church

**Mary Nolan**  
Former ED Planned Parenthood PAC Oregon

**Alberto Moreno**  
Former chair, Oregon Commission on Hispanic Affairs

**Linda Nettekoven**  
Portland public engagement, land use and neighborhood activist

**Michelle DePass**  
Member, Portland Public Schools Board

**Linda Robinson**  
East Portland neighborhood greenspace activist

**Chhabi Koirala**  
Founding president, Oregon Bhutanese Community Organization

(This information furnished by Polo for Portland Committee)

The above information has not been verified for accuracy by the county. The above information has not been verified for accuracy by the county.

## City of Portland Commissioner, Position 2



### Cynthia Castro

**Occupation:** Analyst

**Occupational Background:** Senior Policy Advisor (Commissioner Amanda Fritz), Director (Charles Jordan Community Center), Teen Services Program (PP&R), Cross Country and Track Coach, (OSU)

**Educational Background:** Oregon State University, MA, Public Health; Arizona State University, BA Anthropology, Minor Spanish, Summa Cum Laude

**Prior Governmental Experience:** See Occupational Background; and Community Health Researcher (U.S. Dept. of Health and Human Services' Office on Women's Health Region X)

**As City Commissioner, Cynthia will bring a reputation as a steadfast leader who works alongside the community to get things done.**

**Resiliency:** The COVID-19 pandemic highlighted the importance of stable housing, health care and other safety nets. Cynthia supports increasing the supply of affordable housing and permanent and supportive housing, policies and programs to keep people housed, Universal Basic Income, and greater support for small businesses and creative communities.

**Livability:** No matter where you live in Portland, Cynthia knows you deserve equitable service from your local government, including sidewalks, parks, clean air, and clean water.

**Sustainable Portland Parks & Recreation:** As a champion of Portland's parks, Cynthia will build on Commissioner Nick Fish's work to secure a long-term sustainable funding model for Portland Parks & Recreation.

**Government Access:** Our commission form of government and City systems perpetuate racial inequities. Cynthia will ensure diverse representation on the Charter Review Commission and build greater trust with communities by co-creating policies and programs that meet their unique needs.

**Cynthia is what Portland needs as we overcome the COVID-19 pandemic.**

"With her capacious heart and extremely smart ways, Cynthia was able to gain the trust of little kids, elders, and everyone in between. She exemplifies determination and grit. Service to others is not just a motto for her, she lives it, means it, and breathes it. She would be an incredible addition to Portland City Council." — Kay Reid, Director, Lived Citizenship Program  
To read more visit [www.cynthiacastro.com](http://www.cynthiacastro.com)

*(This information furnished by Cynthia Castro For Portland)*

## City of Portland Commissioner, Position 4



### Mingus Mapps

**Occupation:** Community Organizer

**Occupational Background:** Program Coordinator, Crime Prevention and Neighborhood Association System, City of Portland; Executive Director, Historic Parkrose Neighborhood Prosperity Initiative; Professor, Brandeis University; Visiting Fellow, Harvard

**Educational Background:** Reed College, BA; Cornell University PhD

**Prior Governmental Experience:** Program Coordinator, City of Portland; Government Relations, Portland Public Schools; Assistant to Multnomah County Chair

#### REPRESENTATION MATTERS!

Mingus Mapps is running because he believes Portland can only reach its full potential if all voices are at the table. Portland is diverse and our city council should look like the people who live here. Portland needs a leader who is truly one of us - that's Mingus.

Mingus is an accountable, transparent leader with the experience we need to address Portland's toughest challenges. Mingus will:

#### MAKE CITY HALL WORK FOR PORTLAND

- Work to reform our city charter and advocate for regionally based city council districts so Portlanders across the city are represented.
- Hire a city manager so all city bureaus work effectively together.

#### PRIORITIZE HOUSING AND HOMELESSNESS

- Create supportive housing for those who are chronically homeless and build more affordable housing citywide.
- Dramatically increase funding for short-term rental assistance programs so struggling Portlanders can stay in their homes.
- Coordinate services addressing homelessness across city bureaus.

#### SUPPORT OUR NEIGHBORHOODS AND KEEP US SAFE

- Support and expand our neighborhood associations so every voice is heard.
- Bring back community policing and crime prevention.
- Fight climate change so that Portland is a livable city now and in the future.

"Portlanders deserve to be represented by someone with real experience. As someone who knows the ins and outs of City Hall, I can tell you Mingus is that leader." - Mark Wells, Former Crime Prevention Program Coordinator

**These organizations and community leaders proudly support Mingus:**

Portland Community College Federation of Faculty and Academic Professionals  
Columbia Pacific Building Trades  
Portland Metropolitan Association of REALTORS  
Mary Wendy Roberts, Former Labor Commissioner  
Denyse Peterson, Multnomah Education Service District Board Member

**For a full list, visit [www.mingusmapps.com](http://www.mingusmapps.com)**

*(This information furnished by Mingus Mapps for Portland City Council)*

## City of Portland Commissioner, Position 4



### Seth Alan Woolley

**Occupation:** Doppler Weather Radar Software Engineer

**Occupational Background:** GPS Satellite Navigation Software for Personal Transportation, Carpooling, and Food Delivery; Security Auditing

**Educational Background:** Northwest Public Schools; Willamette University, Computer Science

**Prior Governmental Experience:**

Oregon State Legislative Campaign Finance Reform Task Force Member; Oregon Secretary of State Redistricting Task Force Member; Pacific Green Party of Oregon State Secretary; Honest Elections Portland Campaign Finance Reform Ballot Measure Co-author

**Prior Volunteer Experience:** Portland Clean Air and Cascadia Action Founder; Campaign Finance Analyst and Watchdog; Salem Citizens for Livable Communities Secretary

**Supported or Endorsed by:** 500+ small grassroots donations; Progressive Party of Oregon; Portland Clean Air

ELECT SETH WOOLLEY FOR  
PUBLIC HEALTH, GOOD GOVERNMENT,  
AND FOR GREEN NEW DEAL JOBS

"Seth Woolley is a whip-smart government work."  
—*Willamette Week*, 10/16/2012

Seth's approach to government is similar to his professional life: **dig deep into data and records**, look for significant problems, and propose and implement **data-driven, popular solutions**.

Before Seth's public record work at Portland Clean Air, there was **no systematic or online mapped analysis** of polluters across the Portland metro region. Neighbors only learned of air pollution discharges based on what they could smell, reports of failed reverse-911 phone calls, or bouts of investigative journalism.

The **root cause** of not regulating air quality with concern for **public health** was Oregon's system of **unlimited political bribery** in the form of **big money campaign donations**. Before Seth's analysis for Honest Elections, work to get campaign finance reform **on the ballot**, and **active enforcement** with official complaints and court filings, Portland's political campaigns were heavily funded by **big money donors** and **special interests** with matters before council.

Political staffers are often campaign workers reaping patronage instead of competent administrators. Portland's ethics rules remain **weak and ineffective**. Seth will appoint **good government reformers** to the Portland Charter Commission to help **deeply fix public corruption** and to reform our **antiquated commissioner form of government**.

POLITICS SHOULD BE ABOUT **DEMOCRACY**  
AND **INFORMED BY OPEN DATA AND PUBLIC INPUT**.  
**VOTE SETH WOOLLEY** <http://www.sethforportland.org/>

*(This information furnished by Friends of Seth for Portland)*

## City of Portland Commissioner, Position 4



### Keith Wilson

**Occupation:** President, TITAN Freight Systems

**Occupational Background:** Supervisor, TITAN Freight Systems

**Educational Background:** University of Portland, MBA; Oregon State, BS; Portland Community College; Roosevelt High School

**Prior Governmental Experience:** Vision Zero Expert

**Community Engagement:** Transition Projects Rent Well Houseless Program Mentor; Youth Basketball Coach

In difficult times we need proven, committed, caring leaders, with vision and a record of success creating and sustaining large complex systems. That is who I am, and I'd be honored to earn your vote.  
Let's reTHINK Portland.

#### Keith's Top Priorities Include

#### HOUSING FOR ALL AGES AND STAGES

- **Build Smaller and Faster:** Deeply affordable micro units for those with limited means or who are downsizing.
- **Lower Fees for Affordable Housing Builders**
- **Partner with Neighborhoods:** Create Local Housing Plans

#### HOMELESSNESS

- **Stop Normalizing Street Camping:** It's inhumane and unsafe. We must provide shelter with consolidated on-site services.
- **Decriminalize Homelessness:** 52% of all arrests in Portland are of homeless people. Establish a Homeless Court Program that channels people into programs not jails.

#### PUBLIC SAFETY & CRIMINAL JUSTICE REFORM

- **Housing not Handcuffs:** Employment, job training, and transitional housing for those coming out of incarceration. It's the right thing to do and the most cost effective.
- **Hate Speech Is Not Free Speech:** Zero tolerance for violence masquerading as protest.

#### BOLD CLIMATE ACTION NOW

- **Clean Fuels Now:** My company uses Renewable Diesel reducing our carbon and dangerous emissions up to 60%. If we can, Portland can!
- **Carbon Neutral by 2030:** Convert all City of Portland vehicles to electric and carbon free fuels by 2030.

#### FOSTERING COMMUNITY BY BUILDING NEIGHBORHOODS

- **Give More Support, Not Less:** Neighborhoods are part of the fabric of Portland. They need more support not less, especially underserved and under-resourced neighborhoods.

#### Leaders You Can Trust Endorse Keith

**Mariah Dula, Neighborhood Association Leader**  
**Mark Johnston, Former Asst Sec US Department of Housing**  
**Angus Duncan, Chair, Oregon Global Warming Commission**  
**Chris Aiosa, Chair, Do Good**  
**Lisa Ortquist, CPA**  
**McKenna Fielding, RN**  
**Dr. Todd Kuether**  
**Kevin Murphy, Portland Fire Fighter**

For more information  
[www.keithforportland.com](http://www.keithforportland.com)

*(This information furnished by Keith for Portland)*

*The above information has not been verified for accuracy by the county.*

## City of Portland Commissioner, Position 4



### Chloe Eudaly

**Occupation:** Portland City Commissioner

**Occupational Background:** Small business owner; community advocate; nonprofit program administrator

**Educational Background:** Portland Community College, Honors Program

**Prior Governmental Experience:** Multnomah County Cultural Coalition; PPS District Parent Involvement Committee

#### Community Involvement:

Co-founder, Special Education PTA of Portland; Co-founder, Independent Publishing Resource Center

#### Endorsements:

Portland Association of Teachers; Community Alliance of Tenants Action Fund; SunrisePDX; OurRevolution; APANO; U.S. Senator Jeff Merkley; U.S. Senator Ron Wyden; Congressman Earl Blumenauer; Representative Diego Hernandez; Metro President Lynn Peterson; City Commissioner Jo Ann Hardesty; Former City Commissioner Steve Novick; Housing advocate Israel Bayer; Environmental advocate Bob Sallinger

(visit [www.votechloe.com](http://www.votechloe.com) for more!)

### PROGRESSIVE VALUES. DEDICATED ADVOCATE. EFFECTIVE LEADER.

In 2016, Chloe Eudaly was motivated to run for City Council by our affordable housing crisis, and in her first term **she has delivered results:**

#### ---HOUSING---

(more: [www.VoteChloe.com/housing](http://www.VoteChloe.com/housing))

- **Passed The Mandatory Rental Relocation Ordinance** in the first 30 days of her first term to stabilize tenants during our housing emergency.
- **Passed The Fair Access in Renting Ordinance** to lower barriers to housing and reduce discrimination.
- **Advocated for implementation of the current eviction moratorium during the COVID-19 crisis** to keep Portlanders housed through the pandemic.

#### ---CLIMATE ACTION---

(more: [www.VoteChloe.com/climate](http://www.VoteChloe.com/climate))

- **Championed the Portland Clean Energy Fund.**
- **Co-created the strongest 100% Renewables Resolution in the country.**
- **Developed the Rose Lane Project** to make public transit faster, more frequent, and full.
- **Publicly OPPOSED** the dirty Zenith Energy terminal in NW Portland.

#### ---EQUITY & ACCESS---

(more: [www.VoteChloe.com/equity](http://www.VoteChloe.com/equity))

- **Successfully fought for Universal Representation** to provide Portlanders facing deportation proceedings with legal representation.
- **Increased access to City Hall.** Equity begins with access. Chloe welcomed thousands of Portlanders to City Hall for the first time through numerous arts and culture events.

### WE'RE NOT DONE!

See what Commissioner Chloe Eudaly has planned for her next term at [www.VoteChloe.com/plans](http://www.VoteChloe.com/plans)

Learn more and join the team:  
[www.VoteChloe.com](http://www.VoteChloe.com)

(This information furnished by Chloe Eudaly)

## City of Portland Commissioner, Position 4



### Sam Adams

**Occupation:** Public Policy and Government Improvement Consultant

**Occupational Background:** Director, US Program, World Resources Institute; Executive Director, City Club of Portland; Dishwasher, Mr. Steak

**Educational Background:** Portland State University; University of Oregon

**Prior Governmental Experience:**

Portland Mayor; Portland Commissioner; Portland Mayor Vera Katz, Chief of Staff; District Staff, Oregon U.S. Representative Peter DeFazio

**A vision for Portland's future.**

**A track record of delivering it.**

COVID-19 has harmed people we care about, frayed our social connections, damaged our health and financial security.

**That's why Portland needs a leader with a proven track record of getting tough stuff done during tough times.**

Someone tested. Someone who works relentlessly. Someone who delivers results.

That's what Sam Adams offers. **It's never been more important.**

#### Leadership when it counts

"Floods, snowstorms, riots, recessions... **Sam has helped guide Portland through it all, as a strong and steady leader.** We need that City Council experience now."—**Sheriff Mike Reese**

"...even his toughest critics acknowledged by the end of his term that he had been an accomplished mayor." —**Willamette Week, 7/24/19**

#### Sustainable, equitable recovery centered on jobs, workers, small businesses

"Sam was Portland's Mayor during the Great Recession. **He fast-tracked construction projects, supported small businesses, got people back to work.** We can count on him to do it again." — **Fay Burch, John Mohlis, Joe Esmonde, Fred Sanchez - labor and business leaders**

#### Support for vulnerable communities

"**Sam made investments to help people stay in their homes.** He provided more assistance to the unemployed and shelter for the houseless. Now he has a plan to help Portlanders again." —**Doreen Binder and Steve Rudman - affordable housing advocates**

#### Fighting for all Portland families

"No one in this race has done more to support public schools. We trust Sam's unbreakable commitment to help reopen schools and put our students and families first." —**Gwenn Sullivan, Ann Nice, Rebecca Levison - Teachers' union past presidents**

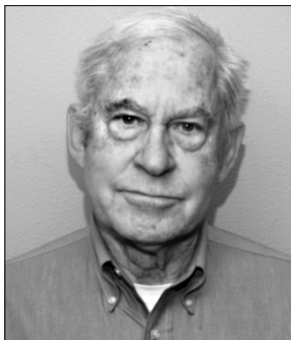
**More Endorsers, Record and Vision at:**  
[www.samadampdx.com](http://www.samadampdx.com)

(This information furnished by Friends of Sam Adams)

The above information has not been verified for accuracy by the county.

The above information has not been verified for accuracy by the county.

## Metro Councilor, District 3



### Gerritt Rosenthal

**Occupation:** Environmental Consultant/ Teacher - Retired

**Occupational Background:** Grade & high school teacher, Williams Bay, WI; Water Lab Chemist - Lane County, Oregon; Water Resources Program Manager/Planner - Lane Council of Governments, Eugene; Adjunct Professor - Biochemistry, Concordia University, St. Paul, MN; Environmental Consultant

(40 years) - Water resources, solid waste, hazardous waste, and natural resources management - Oregon, Washington, California

**Educational Background:** Reed College - Chemistry - BS; University of Minnesota, Minneapolis - Medical Biochemistry - MS; Cornell University, Ithaca, NY - Groundwater Hydrology - MS

**Prior Governmental Experience:** Consultant to various cities and counties on environmental protection and planning issues; Rate Equalization Committee, Metropolitan Wastewater Management Commission, Eugene; Co-Chair, Metro Committee for Citizen Involvement

#### Personal

28-year area resident, civic activist, Stafford area land owner (on Tualatin River tributary), outdoors enthusiast. I believe strongly in practical regional solutions.

#### Professional

Broad experience in land-use planning, solid waste management, & environmental protection. Environmental consultant for over 40 years throughout Pacific NW. Resource studies manager and expert, including on Tryon, Fanno and Crystal Springs Creeks and Willamette River.

#### Civic Activities

Wilderness area advocate, taxation fairness advocate, Washington County OLCV leadership, Meals on Wheels. 2016 candidate for this Metro 3 position.

#### Why I'm Running

I will help Metro ensure that **all regions and jurisdictions, including unincorporated areas**, have consistent guidelines and sound technical advice. I will push for Metro's Climate Smart strategy to reduce greenhouse gases. I will represent "southern tier" residents and interests.

#### Specific Goals

- Increase recycling and reuse throughout the region.
- Ensure the SW corridor MAX serves neighborhoods through user-friendly linkages.
- Help solve homelessness with financial resources and reliable data.
- Ensure Metro's performance venues are energy efficient, attractively maintained and accessible to all.
- Continue to protect park and natural areas region-wide.
- Represent the "southern tier" region of Metro - a voice for unincorporated areas.

#### Endorsements

Senator Rob Wagner - Oregon Senate District 19

Senator Mark Hass - Oregon Senate District 14

Oregon League of Conservation Voters

*(This information furnished by Gerritt Rosenthal)*

## Metro Councilor, District 3



### Alison Balbag

**Occupation:** Professor; Musician; Healthspan-Gerontologist; Researcher & Advocate

**Occupational Background:** Taught music in underserved schools; Arts integration specialist; Curriculum writer; Student life advisor; Wellness director

**Educational Background:** PhD, Gerontology – University of Southern California; Doctor of Musical Arts, Harp Performance

– USC; Master of Music, Harp Performance – USC; Bachelor of Music, Harp Performance – USC; Valley Catholic Schools (Beaverton, OR)

**Prior Governmental Experience:** Arts Commissioner – City of Beaverton; Vice Chair of Arts Commission – City of Beaverton; Arts Economy & Artist Support Subcommittee – City of Beaverton

- Having achieved two doctorates in separate fields, my diverse background — along with being a multiracial female and first-generation college graduate — grants me a unique insight into connecting the dots.
- I advocate for an equitable and diversified ecosystem that is forward-thinking, creative, accessible, and socially just.
- How can we create meaningful change and progress that moves **everyone** forward together?

#### Civic Engagement:

To support our shared future by redirecting our thoughts, resources, and endeavors, I've marched and advocated:

- Against the start and expansion of endless war
- For climate justice
- To end gun violence

#### Volunteer & Advisory Service in the Arts, Sciences, & Education:

- Beaverton Arts Foundation Scholarship Committee & Juror
- International Postdoc Initiative to support gender equality and female researchers
- American Harp Society
- The Gerontological Society of America
- *The Gerontologist*
- Public Speaker

*(This information furnished by Alison Balbag)*

*The above information has not been verified for accuracy by the county.*



## Metro Councilor, District 3



### Tom Anderson

**Occupation:** Real Estate Broker

**Occupational Background:** Owner and Principal Broker of Tigard Real Estate

**Educational Background:** Aloha High School; Washington State University, BA

**Prior Governmental Experience:** Tigard City Councilor (2016 - present); Tigard Planning Commission President; Board of Metro

Regional Water Providers Consortium; Liaison to the Tigard Parks and Rec Board

A current Tigard City Councilor, Tom has real experience to understand the variety of goals and objectives of the different cities included in Metro District 3. Tom will represent the cities' interests in regional projects, including:

- Support the current Southwest Corridor Light Rail Project's conceptual design, which includes station locations that don't displace housing and businesses and track alignment all the way to Bridgeport Village.
- Endorse Metro's T2020 Transportation funding measure to fix outdated infrastructure throughout Washington and Clackamas Counties.
- Support a detailed traffic pattern study on Highway 99W to improve congestion between Sherwood and Tigard.
- Champion smart land use planning with the goal of alleviating rising housing costs. Accomplish this by exploring the expansion of Metro's Urban Growth Boundary to stimulate the construction of new homes in the region.
- Implement Metro's affordable housing bond and work with the different Housing Authorities to supply the region with lower cost housing options.

Craig Dirksen, current Metro Councilor District 3, said this of Tom, "I believe his election to Metro Council would continue to provide the balance and range of opinion needed as the region moves forward in fulfilling its responsibilities." *The Times 12/3/2019*

Proudly endorsed by:

Craig Dirksen, Metro Councilor District 3

State Rep. Margaret Doherty - HD35

Roy Rogers, Washington County Commissioner

Denny Doyle, Beaverton Mayor

Steve Callaway, Hillsboro Mayor

Gery Schirado, Durham Mayor

Jason Snider, Tigard Mayor

John Goodhouse, Tigard City Council President

Liz Newton, Tigard City Councilor

Heidi Lueb, Tigard City Councilor

John Cook, Former Tigard Mayor

Home Builders Association of Metropolitan Portland

[www.tomandersonmetro.com](http://www.tomandersonmetro.com)

*(This information furnished by Tom Anderson)*

*The above information has not been verified for accuracy by the county.*

Not all measures in this Voters' Pamphlet will be on your ballot.

Your residence address determines the districts for which you may vote.

Your official ballot will contain the issues which apply to your residence.



Measure filings appear in the order which they will appear on the ballot, as instructed by the Secretary of State.

Arguments in favor/opposition to a measure appear in order in which each type of argument was received at the County Elections Division.

# City of Happy Valley

## Measure 3-558

REFERRED TO THE VOTERS BY THE CITY COUNCIL

### CHARTER AMENDMENT AUTHORIZING MAYORAL STIPEND COVERING EXPENSES OF HOLDING OFFICE

**Question:** Shall the City Charter be amended to authorize a mayoral stipend to pay for expenses associated with holding office?

**Summary:** The Mayor serves as the City's political leader. In this role, the Mayor incurs regular and ordinary expenses associated with holding office, including transportation and parking costs, registration fees, and expenditures for office supplies.

Currently, these expenses must be paid by the Mayor personally or may be reimbursed by the City. The City recognizes this may represent a barrier for some community members to run for Mayor.

This measure, if approved, would amend the Charter to provide the Mayor with a \$750 monthly stipend to cover these expenses. The initial stipend amount would be modified annually for cost of living adjustments. The City's budget committee will provide oversight of the stipend amount every even numbered year, at a minimum. Their review will ensure the stipend in place adequately covers the expenses associated with holding office. At any time, the Council may temporarily decrease or suspend the stipend if it is not needed.

The stipend would be paid beginning in July 2020. The Mayor would be prohibited from participating in any budget committee decisions related to stipend adjustments.

The stipend would be paid beginning in July 2020. The Mayor would be prohibited from participating in any budget committee decisions related to stipend adjustments.

Submitted by:  
Kara Kerpan  
City Recorder/Management Analyst

### EXPLANATORY STATEMENT

Members of the City Council, including the Mayor, are often asked to represent the City in their official capacity at various meetings and events throughout the Metro region and the state. Doing so is a common and necessary duty for the City's elected officials, and often results in great benefits to the community. For example, the City's elected officials have travelled to Salem to lobby the legislature on matters of importance to the City, spoken at community events and attended conferences to learn about important matters affecting cities, including Happy Valley.

Our elected officials often incur expenses when engaging in such activities on behalf of the City. Currently, elected officials may pay for these expenses personally or seek reimbursement from the City after they have pre-paid for such expenses on their own. Notwithstanding the ability to seek reimbursement from the City, quite often the City's elected officials do not do so. Further, processing reimbursements takes staff time and resources and is not the most cost-effective method for covering costs.

Under the Charter, the Mayor is the political head of the City. Because of this increased role, the Mayor often incurs regular and ordinary expenses associated with holding office that are above and beyond those incurred by other members of the City Council. The City recognizes this may represent a barrier for some community members to have the ability to run for Mayor.

This measure, if approved, would amend the Charter to provide the Mayor with a monthly stipend to cover these regular and ordinary expenses of holding office. The initial stipend would be \$750 per month, which would be modified annually for cost of living adjustments utilizing the U.S. Bureau of Labor Consumer Price Index. In addition, the City's budget committee will provide oversight of the stipend amount every even numbered year, at a minimum. Their review will ensure the stipend amount adequately covers the expenses associated with holding office.

**NO ARGUMENTS IN FAVOR/OPPOSITION TO THIS MEASURE WERE FILED**

# City of Wilsonville

## Measure 3-556

REFERRED TO THE PEOPLE BY INITIATIVE PETITION

### Charter Amendment Establishing Term Limits of City Council

**Question:** Should members of City Council be term limited to serving no more than 12 years in any 20-year period?

**Summary:** The measure would amend the City Charter to impose term limits on all members of City Council. The measure would restrict a person from serving on City Council to no more than 12 years in any 20-year period. The 12-year term limit would apply to the total time served on City Council, regardless of whether a person served as an elected or appointed member, or as a Mayor, Councilor, or both, during the 20-year period. The measure would prohibit a person from being elected or appointed to City Council if completing that term of office would cause a violation of the foregoing term limits. The measure would apply term limits retroactively, including to all current members of City Council. The measure would not prohibit current members of City Council from fulfilling their current term of office. If voters approve the measure, the current Mayor and one current Councilor would be term limited upon conclusion of their current terms. The measure would calculate a year of service to mean 365.25 days.

If the Measure fails, there would be no mandatory term limits in Wilsonville and re-election would remain up to the voters at the expiration of each four-year term. There would be no term restriction on who could run for office. Voters would continue to decide whether any mayor or city councilor running for re-election would continue in office.

Submitted by:  
City of Wilsonville  
Kimberly Veliz - City Recorder

### EXPLANATORY STATEMENT

This Measure, if passed by voters, would amend the City of Wilsonville Charter to add a "City Council Term Limits" section. The current Charter does not impose term limits.

If the Measure is passed, it would prohibit any person from serving as a mayor, city councilor, or combination of both, for more than 12 years in any 20-year period. This 12-year period applies to the total amount of time a person serves on the Wilsonville City Council, regardless of the position held. Under the Measure, during any 20-year period, a city councilor could run for mayor if doing so would not exceed the total 12-year limit, including time already served as a city councilor. Similarly, a mayor could run for city council if doing so would not exceed the total 12-year time limit, including time already served as a mayor.

The Measure would also apply to a person appointed to complete a term in office. For example, a person appointed to serve any portion of a four-year term caused by a vacancy would be eligible to serve two (2) additional four-year terms in any City Council office (mayor or city councilor) because running for a third term would exceed the 12-year limit. In such instance, the effect of the Measure would result in a term limit of less than 12 years. This would be the case for one current City Councilor.

This Measure is retroactive as to counting time of service of all current City Councilors. If the Measure passes, the current Mayor could finish his current term but would not be eligible to run or be re-elected in November 2020. The longest tenured City Council member, whose term expires in 2022, could serve until 2022 but would not be eligible for re-election in 2022. If re-elected in November 2020, the current City Council President would thereafter be eligible for one more term, in any capacity. The remaining two City Councilors would each be eligible to run for two more terms, in any capacity, from the date their current terms expire (2020 and 2022).

## City of Wilsonville Measure 3-556

### ARGUMENT IN FAVOR

#### TERM LIMITS FOR HEALTHY RESPONSIVE DEMOCRACY

Wilsonville is home to many hundreds of talented volunteers working within our community. By requiring regular rotation in city offices, we can draw from the deep well of civic talent that makes Wilsonville such a great place to live.

Founded in 1969, Wilsonville elected six different mayors in its first 24 years. Over the last 24 years, Wilsonville has elected two mayors (both still on council). When our current mayor was first elected to council, half of Wilsonville's population didn't live here.

#### Political Machines Hamper Community Involvement

About a decade ago, our council adopted rules providing term limits for city boards and commissions, all appointed by the mayor. This ensured that all appointees would row in the same direction, even when public preferences flowed decidedly against them. When council vacancies occur, the appointed replacements inevitably come from those who will not challenge the status quo and often by appointment before election. Outside applicants are routinely dismissed as "inexperienced" regardless of talent and commitment to community service.

Political machines protect entrenched interests by shutting down dissent - term limits disrupt political machines. Term limits ensure regular open-seat elections with lively policy debates. Term Limits keep government accountable with fresh leaders who are connected with voters.

#### Neighbors Have Term Limits

Tualatin adopted these same term limits in 2016. Their mayor of 22 years made the same arguments opponents voice in this election - lost experience/influence, outside agendas, etc. In short, they thought they were irreplaceable. Tualatin's voters didn't fall for it and neither should you. Tualatin welcomed new, talented and diverse city councilors and elevated one city councilor to Mayor.

These term limits are not burdensome. After twelve years, you can sit out two terms before running again. Lake Oswego has prospered for the last forty years with much stricter 8-year limits. Sherwood and Tigard both have 12-year limits. Wilsonville easily has the talent depth for 12-year limits.

*(This information furnished by  
Debi Laue, Scott Starr & Doris Wehler)*

## City of Wilsonville Measure 3-556

### ARGUMENT IN FAVOR

#### VOTE YES ON TERM LIMITS

**We citizens of Wilsonville support a "yes" vote on Term Limits for the Wilsonville City Council.** These are some of our reasons:

#### Encourages New Leaders

The power of entrenched incumbency makes it difficult for new voices to be heard. We support a level playing field for fresh perspectives, increased diversity, and new ideas.

#### Promotes New Solutions

When politicians become entrenched in our government, their ideas become stale. Without new voices, we don't get new choices.

#### Reduces the Influence of Money in Politics

Incumbents have a built-in advantage in fundraising because they wield power over decisions that can favor or harm potential large donors.

#### 12 Years then Take a Break

Twelve years is more than enough time to bring forward community solutions, and then your neighbors can take a turn at it. If a past council member or mayor wants to run again after sitting out two terms, they are free to do so. Term limits are working well for many surrounding cities.

#### Continuity Assured

Wilsonville's city council terms are staggered so term limits will be phased in. This ensures continuity on city council with a very capable city staff.

#### PLEASE JOIN US IN VOTING YES

Donna Bane	John Ludlow
Sherine Beltran	Kris McVay
Denny Bies	Jules Moody
Kyle Bunch	Carolyn Molter
Jerry Carlson	Grady Nelson
Alex Carney	Ray Nelson, Jr.
Dave Carney	Becky Nichols
Carly Carpenter	Mike Nichols
Casey Carpenter	Carrie Postma
Donna Crace	Eric Postma
George Crace	Chris Roche
Tim Crowley	Kristin Roche
John Davis	Paul Rummell
Michele Dempsey	Susanne Schneider
Peggy Harper	Kristin Smith
Sally Hemson	Leanne Spence
Peter Hurley	Richard Spence
Kate Johnson	Scott Starr
Priscilla Johnson	Doris Wehler
Laura LaJoie	Ben West
Megan Larson	Matt Wingard
Kevin T. Larson	Eric Winters
Debi Laue	

*(This information furnished by  
Debi Laue, Scott Starr & Doris Wehler)*

*The printing of this argument does not constitute an endorsement by Clackamas County, nor does the county warrant the accuracy or truth of any statements made in the argument.*

## City of Wilsonville Measure 3-556

### ARGUMENT IN FAVOR

#### THE WILSONVILLE CHAMBER OF COMMERCE SUPPORTS TERM LIMITS

Wilsonville is home to many great businesses and business minded citizens. This community has a wealth of talented individuals who want to support a vibrant business environment in this city and are prepared to volunteer their time to realize that goal. Term limits for city council members and the mayor opens the door for those individuals to contribute to crafting policy for healthy business in Wilsonville that is compatible with the goals of Wilsonville's citizens.

#### Term Limits Important for Multiple Issues

The value of term limits does not boil down to a single issue or policy. The proposed term limits provide adequate time for elected councilors and the mayor to gain experience while allowing for a reasonable rotation of individuals to those positions that facilitates new ideas and policy goals. Strong business in Wilsonville does not depend on a single policy or issue, and the term limits proposed will insure that new policies and focus will have their day.

#### Neighboring Business Communities Thrive with Term Limits

Many of Wilsonville's neighbors have vital communities and a strong business atmosphere, and also have term limits for city councilors and their mayor: Those communities include: Hillsboro, Lake Oswego, Sherwood, Tualatin, Tigard, Oregon City, and Milwaukie. METRO and Multnomah County also flourish with term limits for their elected officials. Wilsonville's business and the community will thrive with the proposed term limits.

#### THE WILSONVILLE CHAMBER OF COMMERCE SUPPORTS THE PROPOSED TERM LIMITS BECAUSE THEY WILL ENSURE A STRONGER BUSINESS ENVIRONMENT AND A VITAL COMMUNITY.

*(This information furnished by Kevin Fereasci O'Malley, CEO,  
Wilsonville Chamber of Commerce)*

## City of Wilsonville Measure 3-556

### ARGUMENT IN OPPOSITION

#### TERM LIMITS WILL HURT WILSONVILLE We Recommend NO on Measure 3-556

We support Wilsonville constituents who **OPPOSE Term Limits** for your City Council. You have a vibrant, livable city because your mayors and councilors have built strong relationships, over time, with other leaders throughout the region. Let's keep it that way!

Support **OPEN ELECTIONS** by Voting **NO on Term Limits!**

Respectfully,

Jim Bernard, Clackamas County Commission Chair  
Ken Humbertson, Clackamas County Commissioner

**Jim and Ken support Open Elections in Wilsonville.  
Please join us, your Wilsonville neighbors, in voting:**

#### NO on Measure 3-556!

#### Villebois

Courtney Neron  
Julie Fitzgerald  
Mary Closson  
Katie Hamm

#### Fox Chase/Hazelwood/ Morey's Landing

Al Levitt  
Pat Rehberg  
Susan Schenk  
Danton Wagner

#### Meadows/Landover

Aaron Woods  
Caroline Berry  
Jerry Greenfield  
Andrew Mackenzie

#### Charbonneau

Tony Holt  
Eric Hoem  
Wayne Richards  
Bob Harland

#### Park at Merryfield

Klaus Gibson  
Michelle Ripple  
Angela Roccograndi

#### Other Neighborhoods

Alan Steiger  
Mary Elizabeth Harper

#### And many, many more ...

Richard Martens, Cornelia Gibson, Bill Wallace, Reg & Ann Keddie, Klaus Gibson, Patrick Donaldson, Robert Wiesenthal, Tom Ripple, Bob Renfro, Judith Brennan, Tom & Vicki Kells, Kim Martin, Matt McGuire, Shirley Wood, Jack & Kate Glauner, Bob Applegate, Joe & Sharon Rysavy, and many more ...

*(This information furnished by Jim Bernard)*

*The printing of this argument does not constitute an endorsement by Clackamas County, nor does the county warrant the accuracy or truth of any statements made in the argument.*

# City of Portland Measure 26-209

REFERRED TO THE PEOPLE BY THE CITY COUNCIL

## Renew Motor Vehicle Fuel Tax for Street Repair, Maintenance, Safety

**Question:** Shall Portland renew four-year, 10 cents per gallon fuel tax for maintenance (paving, potholes) and safety (crossings, lighting, sidewalks)?

**Summary:** Portland's 10 cents per gallon fuel tax was approved by voters in 2016. If renewed at the same tax rate, this measure is estimated to raise \$74.5 million over four years, beginning January 2021.

The funding would continue to be dedicated to street repair, maintenance and safety projects, including paving, pothole repair, sidewalk and safety improvements. Specific proposed investments include:

### Street Repair and Maintenance

- \$25 million for paving, focused on busy and neighborhood streets

### Safety

- \$6 million for Safe Routes to School projects to improve safety for elementary students
- \$4.5 million to expand Neighborhood Greenways and connect schools, parks, transit, and neighborhood businesses
- \$5 million for traffic signals and crossing beacons
- \$4.5 million for street lighting on High Crash Network
- \$4.5 million for sidewalks and other walkways
- \$1.5 million for small-scale neighborhood safety improvements

### Community-Identified Transportation Needs

- \$13 million for potholes, gravel streets, and pavement base repair
- \$10.5 million for basic safety improvements

Expenditures go through independent financial audits and are reviewed by a public oversight committee that reports annually. Establishes license requirements.

## EXPLANATORY STATEMENT

In 2016, Portland voters approved a 10 cents per gallon fuel tax to fund street repair, maintenance, and safety improvements. Portland City Council also approved a companion heavy vehicle use tax.

Voter approval of this program followed independent research by City Club of Portland into options to fund local street maintenance and safety improvements. The report identified a local gas tax as a needed new funding source for transportation investments.

Over the past four years, the fuel tax has raised \$76 million dedicated to the Fixing Our Streets program, which repaved 38 lane miles of city streets, repaired over 400 sections of failing road, built sidewalks in East Portland, and 170 additional safety improvements across Portland. For a full list and map of completed projects, visit [www.fixingourstreets.com](http://www.fixingourstreets.com).

**If renewed by voters at the same tax rate, the 10-cent fuel tax is estimated to raise \$74.5 million over four years beginning January 2021.**

Renewing the fuel tax will allow the Fixing Our Streets program to continue keeping Portland streets in good condition for current and future users, with project selection guided by existing plans and public input from neighborhood stakeholders, transportation justice advocates, and business groups.

For a full list of proposed projects, visit [www.fixingourstreets.com/2020](http://www.fixingourstreets.com/2020).

## STREET REPAIR AND MAINTENANCE

If renewed, Fixing Our Streets funds would continue to fund repair and maintenance projects that prevent expensive full replacement of worn-out streets.

Proposed projects include **\$25 million dedicated to paving**, with a focus on busy and neighborhood street repair and maintenance projects that are less expensive to fix now. An additional **\$13 million would fund pothole, gravel street, and pavement base repair services** identified as community priorities.

## SAFETY

If renewed, Fixing Our Streets funds would continue to be invested in safety projects for people driving, biking, and walking in neighborhoods across Portland, including creating safer intersections, reducing vehicle speeds on cut-through routes, retrofitting our existing Neighborhood Greenways, and making additional safety enhancements to existing projects.

Proposed projects and services for targeted investment include **\$5 million for traffic signals and crossing beacons, \$4.5 million for sidewalks, \$4.5 million for street lighting**, as well as better and safer access to schools, transit, and community services for Portland's kids, seniors, and families. **\$6 million would fund Safe Routes to Schools projects, and \$4.5 million would expand Neighborhood Greenways.** An additional \$10.5 million would fund basic safety repairs.

## SAME TAX RATE

Because this is a proposed renewal, the 10 cent per gallon tax rate would remain the same as it is today. The average Portlander would continue to pay approximately \$5 per month.

## AUDITS AND INDEPENDENT OVERSIGHT

**The Fixing Our Streets program will continue to go through annual independent financial audits.** These audits will be shared with the oversight committee and the public. Spending from the program will be overseen by the **Fixing Our Streets Oversight Committee** representing the many communities with a stake in Portland's streets and roads.

Submitted by:  
Chloe Eudaly, Commissioner  
City of Portland

**NO ARGUMENTS IN FAVOR/OPPOSITION TO THIS MEASURE WERE FILED**

# Centennial School District Measure 26-208

REFERRED TO THE PEOPLE BY THE BOARD

## Authorizes General Obligation Bonds for School Security and Facility Improvements

**Question:** Shall the District issue \$65,000,000 bonds for school security and facility improvements and receive a \$7,494,690 State matching grant? If the bonds are approved, they will be payable from taxes on property or property ownership that are not subject to the limits of sections 11 and 11b, Article XI of the Oregon Constitution.

**Summary:** It is estimated that this measure would not increase current tax rates due to the expiration of existing debt.

The State awarded Centennial School District No. 28JT a \$7,494,690 matching grant if the bonds are approved. If bonds are not approved, grant funds will be distributed to another district.

If approved, bonds will fund school facility capital projects, including:

- Repairing and replacing roofs, boilers, foundations, windows and flooring, and other school facility improvements
- Upgrading school safety and security systems
- Adding gymnasiums to four schools that have no dedicated gyms
- Repurposing Oliver Elementary back into a middle school, including library, science, locker rooms and career technical improvements
- Refinancing existing capital obligations and paying bond issuance costs

Bonds would mature in 30 years or less from issuance date and may be issued in one or more series. The existing tax rate of approximately \$1.19 per \$1,000 of assessed value is projected to continue with no expected increase. Actual levy rates may vary based upon interest rates incurred and changes in assessed value.

## EXPLANATORY STATEMENT

The average age of Centennial School District's ten schools is 55 years old. There have been no bond-funded renovations, upgrades or improvements to schools since 2001. This measure would fund renovations and upgrades.

A community-based Long-Range Facilities Planning Team recommends a bond measure to address facility issues and make improvements to support student learning.

Proposed projects include renovations to extend the life of buildings, improve efficiency and address student safety and instructional needs. If passed, the District would be awarded a \$7,464,690 State matching grant.

### If approved, the bond measure would:

- Make improvements at all traditional schools, including renovating and replacing school roofs, boilers, foundations, windows and flooring. These projects would create operational savings and efficiencies by upgrading HVAC systems, lighting fixtures and plumbing. District is working with the Energy Trust of Oregon to obtain advice and added funding for these projects.
- Make safety and security improvements including upgrades to intercom systems, exterior doors, and exterior camera systems for student and staff safety.

- Add gymnasiums to four elementary schools that have no dedicated gym space to meet new State P.E. requirements.
- Repurpose Oliver Elementary back into a middle school, including upgrading the library, science classrooms, and creating career technical classrooms. This will allow sixth graders to return to middle school level, giving students one additional year in middle school to prepare for high school, and allow increased opportunity for technical career focused learning at both middle schools.

### The proposed bond would fund the following projects:

- Repairing and replacing roofs, boilers, foundations, windows and flooring, and other school facility improvements
- Upgrading school safety and security systems
- Adding gymnasiums to four schools that have no dedicated gyms
- Repurposing Oliver Elementary back into a middle school, including library, science, locker rooms and career technical improvements
- Refinancing existing capital obligations and paying bond issuance costs

### Bond costs

Due to the retirement of a previous bond, the proposed bond measure is estimated to continue the District's current bond tax rate of approximately \$1.19 per \$1,000 of assessed property value or \$119 per year for property assessed at \$100,000. Bonds would mature in 30 years or less from the date they are issued and may be issued in one or more series. Bond funds can only be used for capital projects, not operating costs. **If passed, the District would be awarded a \$7,464,690 State matching grant.**

In planning for this bond measure, Centennial School Board convened a Long-Range Facilities Planning Committee made up of community members, energy conservation and construction professionals, parents, teachers, staff and principals. This committee toured each school, reviewed systems and analyzed information. From this work they developed recommendations for the School Board. This resulting bond measure includes the committee's highest priority recommendations.

### Accountability

If the bond is approved, the District will establish an independent community-based bond oversight committee to oversee bond funds.

Submitted by:  
Dr. Paul Coakley  
Superintendent  
Centennial School District 28JT

**NO ARGUMENTS IN OPPOSITION TO THIS  
MEASURE WERE FILED**

## Centennial School District Measure 26-208

### ARGUMENT IN FAVOR

Fix our schools, protect our investment, prepare our kids a successful future.

#### VOTE YES ON BALLOT MEASURE 26-208 FOR CENTENNIAL SCHOOLS

Centennial schools need critical repairs. School funding covers basic maintenance, but it is meant for education, not major facility repairs.

**Our schools are aging—the average age is 55—and they have not had major maintenance projects since the last bond passed in 2000.**

This bond would fix our schools with no additional financial impact on our community. It replaces an expiring bond from 2000, so there would be no rate change for bond costs for schools.

We support the Centennial School District bond measure to repair school buildings and make essential safety and security updates.

This is a time to take care of schools, which are an important center for our community. In these uncertain times, we need to make smart decisions. This proposal improves safety and security and will ensure that these buildings, which belong to our community, will last and can serve our immediate and future needs.

This measure will also help protect our economy by putting money back into our community—through projects that will employ local skilled workers and through additional economic activity that will bring money into our community and local businesses.

**This bond is recommended by a community-based facilities review task force.**

The projects are necessary. They were identified after a year-long process of careful review of what we need. They are the most critical projects, selected to cover immediate needs and maintain a low tax rate.

We stand behind this measure because it is based on careful and thorough planning and will fix our buildings and improve the educational environment for our students and our educators.

**Ballot Measure 26-208 is good for our community.  
Please join us in voting yes.**

Bob Tackett,  
NW Oregon Labor Council, AFL-CIO

*(This information furnished by Rod Boettcher)*

## Centennial School District Measure 26-208

### ARGUMENT IN FAVOR

We are the Centennial Education Association (CEA) and we support the Yes for Centennial Kids campaign in support of Bond Measure 26-208. We do so because we appreciate and value the commitment our communities have invested in our schools over the years. As educators, we know students need educational environments that support their learning.

This proposal is based on high levels of community input. The following are just a few of the most important reasons teachers are supporting this bond proposal:

- The bond **was designed to make critical repairs** to schools and extend the life of our school buildings. The projects are necessary to prepare students for the future and reduce future costs for rebuilding the buildings if we don't repair them.
- The bond will improve school safety with infrastructure projects, **suggested by security experts and community groups**, such as safety and security systems, intercoms, fire alarm systems and security cameras.
- The bond will fund projects to **improve the energy efficiency of aging buildings** and help save many thousands of dollars a year, which will reduce costs and put more money in the classroom for student learning.

We also recognize these important benefits for our community:

- This **WILL NOT** raise your tax rate. Centennial School District has designed the bond to replace and maintain an expiring bond.
- The district has, and will continue to be, financially responsible to our community by establishing a citizens' bond oversight committee, which will ensure bond proceeds are used to fulfill construction plans.
- Our schools, and the services they offer to students and community members, provide a **public good by providing appropriate and updated community spaces.**
- This investment will help strengthen home values and promote a powerful sense of community within our schools.

For more information please visit [www.yesforcentennialkids.com](http://www.yesforcentennialkids.com) and [www.csbond2020.com](http://www.csbond2020.com).

Please join **Centennial teachers** in supporting Centennial students, schools, and the community by **Voting YES on Measure 26-208!**

*(This information furnished by  
Alicia Brown, Centennial Education Association)*

*The printing of this argument does not constitute an endorsement by Clackamas County, nor does the county warrant the accuracy or truth of any statements made in the argument.*



## Centennial School District Measure 26-208

### ARGUMENT IN FAVOR

**We are parents and we support this important measure to repair schools and improve safety.**

Many people don't see the problems in our school buildings. As parents and volunteers in the buildings we can see how much these improvements are needed.

- **Critical facility repairs**
- **Important school safety and security projects**

This bond would fund the most critical projects to improve the buildings where children learn. It would improve the learning environment, make our schools safer, and not raise the current tax rate.

**This is a smart and necessary investment in our schools, our students, and our community.**

- The measure will replace an expiring bond and maintain the tax rate.
- The projects will improve efficiencies and save money on operational costs.

**You don't have to be a parent to know how important schools are to our community, but if you aren't a parent, you may not know what the conditions are in our schools.**

Our kids deserve to be warm while they are in class. Earlier this year, students had no heat in their classrooms. Centennial schools have outdated boilers for heat—and they cannot turn on early in the year.

Our kids deserve to play on a dry playground at recess. During a heavy rain this winter, the playgrounds were almost completely flooded at Pleasant Valley Elementary.

This bond is not about the extras—it's about the necessities. We know because we see it in the buildings and we can do better.

Help us improve our schools so kids can learn. It won't raise your tax rate, but it will make a big difference for education in our community.

**Please join us. Support healthy and safe schools. VOTE YES on Measure 26-208!**

Michele Es-Sahb, Butler Creek Elementary  
Roxie Sprick, Parklane Elementary  
Shalon Dittler, Patrick Lynch Elementary  
Jerry Ray, Pleasant Valley Elementary  
Brandi Hutchison, Powell Butte Elementary  
Julie Zimmerman, Oliver Elementary  
Cherisse Huff, Centennial Middle  
Myrna Jensen, Centennial High

*(This information furnished by Rob Boettcher)*

## Centennial School District Measure 26-208

### ARGUMENT IN FAVOR

**Vote YES on Measure 26-208 to help our students, local businesses and community.**

Our local economy relies on well-maintained, thriving schools to attract new residents, improve property values and train students to work locally and in the Portland Metro region. Good schools contribute to a community where people want to live and work.

Your support of Measure 26-208 will provide an opportunity to hire local companies and workers, who will in turn support local businesses. The facility improvements will attract and retain educators and administrators at all grade levels.

Improved schools will attract families for long term investment in the neighborhoods. Most importantly, Measure 26-208 invests in our students who are part of the future work force.

**Centennial school buildings are aging and need repairs.**

The average school facility age is 55. A facility study identified more than \$135 million in facility needs, of which \$65 million are most critical.

Our schools have serious facility needs that haven't been funded since the last bond passed in 2000. These are not cosmetic projects—the buildings need serious maintenance now.

Unfortunately, the operating budget can't cover these critical facility needs—new roofs, replacing heating systems, windows, flooring and more. If we don't fix them now, the needs will cost much more later. Measure 26-208 will save thousands in tax dollars by improving operational building efficiency and reducing maintenance costs.

**Measure 26-208 will replace an expiring bond and maintain the current tax rate.**

**Vote YES on Ballot Measure 26-208 to ensure that our children have access to world-class schools.**

Home Builders Association of Metropolitan Portland

Jerry Hinton, Gresham City Council

Mark Wetzel, Mark's Point S Tire and CHS Alum

*(This information furnished by Rod Boettcher)*

*The printing of this argument does not constitute an endorsement by Clackamas County, nor does the county warrant the accuracy or truth of any statements made in the argument.*

# Metro Measure 26-210

REFERRED TO THE PEOPLE OF THE METRO REGION BY THE METRO COUNCIL

## Supports homeless services through higher earners' tax, business profits tax.

**Question:** Should Metro support homeless services, tax income over \$200,000/\$125,000 (joint/single), profits on businesses with income over \$5 million?

**Summary:** Measure funds supportive housing services to prevent and reduce homelessness in Washington, Clackamas, and Multnomah counties within district boundaries. Prioritizes services to address needs of people experiencing, or at risk of, long-term or frequent episodes of homelessness. Services funded by a marginal income tax of 1% on households with income over \$200,000 (over \$125,000 for single filers) and a business profits tax of 1%. Income tax applies to resident income, and to non-resident income earned from sources within district. Exempts businesses with gross receipts of \$5 million per year or less.

Declares funding for homelessness services a matter of metropolitan concern, directs regional funding to local services agencies, requires community engagement to develop localized implementation plans. Allocates funds to counties by estimated revenue collected within each county. Establishes community oversight committee to evaluate and approve local plans, monitor program outcomes and uses of funds. Requires creation of tri-county homeless services coordination plan.

Requires performance reviews and independent financial audits. Metro administrative and oversight costs limited to 5%. Requires voter approval to continue tax after 2030.

## EXPLANATORY STATEMENT

The greater Portland region is facing a severe housing affordability and homelessness crisis. Rents and housing prices have risen faster than wages, making it especially hard for people living on fixed retirement or disability incomes to afford housing. While it is difficult to accurately estimate the number of people experiencing homelessness, or at risk of becoming homeless, according to a February 2020 report by EcoNorthwest, an estimated 38,263 people (24,260 households) experienced homelessness in 2017 in Washington, Clackamas and Multnomah counties; thousands more were at risk.

Homelessness disproportionately impacts people with disabilities, people of color, and seniors. For people who experience homelessness, disabling conditions such as mental illness, chronic medical conditions, and addiction are made worse, and become barriers to housing placement.

Providing supportive housing services is a widely demonstrated approach to effectively end homelessness for individuals who have experienced prolonged and repeated homelessness, and protecting families from becoming homeless with prevention assistance. Supportive housing services include case management, mental healthcare, addiction and recovery treatment, employment services, rent assistance, and other care as needed. Despite state and local efforts to increase investment in supportive housing services, the need in greater Portland exceeds local capacity.

This measure will authorize Metro to establish a regional supportive housing funding program, providing the resources to address unmet needs of people experiencing or at risk of experiencing long-term or frequent episodes of homelessness in the greater Portland region. The measure will result in a substantial increase in the delivery of supportive housing services.

Supportive housing services will be funded by a marginal personal income tax of 1% on households with taxable income over \$200,000 (or taxable income over \$125,000 for individual tax filers) and a business profits tax of 1% with an exemption for small businesses that have gross receipts of \$5 million or less per year. The personal income tax will be assessed on residents of the Metro district, and on non-residents who have income earned from sources within the district. Only income above \$200,000 (\$125,000 individual) is taxed.

In each county a local implementation plan will be developed to describe how supportive housing services will be prioritized and delivered to address local needs. Local plans must be developed using comprehensive community engagement that prioritizes those most directly affected by the homelessness crisis.

A regional oversight committee with broad geographic representation will review and evaluate each local plan, monitor local implementation, and review spending. The oversight committee will report every year to Metro Council on program outcomes and areas for improvement, and annual performance and financial audits of funding for supportive housing services will be conducted. Metro administrative costs are limited to 5% and must be reviewed annually. The measure requires voter approval to continue after 2030.

On Behalf of:  
Metro Council President Lynn Peterson  
Councilor Shirley Craddick  
Councilor Christine Lewis  
Councilor Craig Dirksen  
Councilor Juan Carlos Gonzales  
Councilor Sam Chase  
Councilor Bob Stacey

Submitted by:  
Carrie MacLaren, Metro Attorney

## Metro Measure 26-210

## Metro Measure 26-210

### ARGUMENT IN FAVOR

#### HOMELESS SERVICE PROVIDERS URGE EVERYONE TO VOTE YES ON MEASURE 26-210

Imagine having to tell someone there is no warm bed for them to sleep in that night. That it will be at least two years before their family can move into a safe home. That there is no laundry detergent, even though the shelter has a washer. There is no toilet paper to be used, even though the shelter has a bathroom. That the hot meals provided that day are all gone. That your case is number 100 or higher on a case manager's desk.

We, as service providers, have these conversations with our clients every single day. In the tri-county area, we serve thousands of people experiencing homelessness each month, and we do not have the resources to help the thousands more in need.

**As human beings, we cannot accept this state of affairs. As a community, we must do better.**

We KNOW what solves people's homelessness. Housing first, and then the flexible supportive services necessary to meet the needs of each individual experiencing homelessness. Some people may need mental and physical healthcare; some may need addiction treatment services. Some people may need job training; others may need help claiming benefits for a steady income.

We MUST have the resources needed to scale up our efforts to provide the supportive services necessary to ensure those without homes are sheltered.

**We urge you to vote.** It will provide the much-needed supportive services for people of color, seniors, youth, women escaping domestic violence, LGBTQIA+ community members, and veterans, among others, experiencing or at risk of experiencing chronic and episodic homelessness across the Metro region.

**"People on the street age 20 years faster than their housed counterparts. We can, and must, do better to support the health and well-being of everyone in our community."** - Dr. Rachel Solotaroff, President and CEO, Central City Concern

Continued.

### ARGUMENT IN FAVOR

#### HOMELESS SERVICE PROVIDERS URGE EVERYONE TO VOTE YES ON MEASURE 26-210, continued

Adelante Mujeres  
Asian Pacific American Network of Oregon  
ASSIST Disability Program  
Bradley Angle  
CareOregon  
CASA of Oregon  
Cascade AIDS Project  
Cascadia Behavioral Healthcare  
Catholic Charities of Oregon  
Central City Concern  
Centro Cultural  
Clackamas Service Center  
Clackamas Women's Services  
Coalition of Communities of Color  
ColumbiaCare Services  
Community Action, Washington County  
Community Alliance of Tenants  
Community Partners for Affordable Housing  
DoGood Multnomah  
Easterseals Oregon  
Ecumenical Ministries of Oregon  
El Programa Hispano Católico  
Hacienda Community Development Corp.  
Healthshare of Oregon  
Homeless Solutions Coalition of Clackamas County  
HomePlate Youth Services  
Housing Oregon  
Human Solutions  
Immigrant Refugee & Community Organization  
Impact NW  
Innovative Housing  
Interfaith Alliance on Poverty  
JOIN  
Latino Network  
Living Cully  
Love INC of Clackamas County  
LoveOne  
Luke-Dorf  
Metropolitan Alliance for the Common Good  
Nathan Teske, Executive Director, Bienestar  
National Alliance on Mental Illness, Clackamas  
Native American Youth and Family Center  
New Avenues for Youth  
Northwest Family Services  
Northwest Housing Alternatives  
Northwest Pilot Project  
Operation Nightwatch  
Oregon Energy Fund  
Oregon Food Bank  
Outside In  
Outside the Frame  
p:ear  
Portland Homeless Family Solutions  
Prism Health  
Project Homeless Connect  
Proud Ground  
REACH Community Development  
ROSE Community Development  
Sequoia Mental Health  
St. Mary's Home for Boys  
Stone Soup PDX  
Street Roots  
The Father's Heart  
The Rosewood Initiative  
Transition Projects  
Unite Oregon  
Welcome Home Coalition  
Winter Shelter of Forest Grove and Cornelius  
YWCA of Greater Portland

*(This information furnished by Cole Merkel, HereTogether)*

*(This information furnished by Cole Merkel, HereTogether)*

*The printing of this argument does not constitute an endorsement by Clackamas County, nor does the county warrant the accuracy or truth of any statements made in the argument.*

## Metro Measure 26-210

### ARGUMENT IN FAVOR

**VOTING YES ON MEASURE 26-210 FOR SUPPORTIVE HOMELESS SERVICES WILL HELP PEOPLE LIKE ME**

**I became homeless because my partner shot me.**

The services we need funded right now are vital. I know because they saved my life

I was born and raised in Portland. Growing up here, I never imagined that I would see so many people living in tents in our neighborhoods, or that I myself would face homelessness due to domestic violence.

**No one teaches you to prepare for homelessness.** And I promise no one chooses it over better alternatives.

I can say with experience that facing housing insecurity is as traumatic as getting shot in the chest by someone you love and trust. When I was shot, my support network was lacking due to the trauma of domestic violence. So not only was I recovering from a gunshot wound, but I was also dealing with the shame that I could not house myself in the city where the African American side of my family had managed to be homeowners for 4 generations. Together, this created my recipe for disaster.

The organizations providing the services needed for those dealing with housing insecurity are broke, but it is not a broken system. We need the funding to support the services we know work in combating our homeless disaster. People not experiencing housing insecurity call it a crisis. Those that have lived experience know it's a disaster. **It is time for us as a community to help our vulnerable neighbors rebuild their lives.**

It took four years to rebuild my life, thanks to the supportive services available. I am now a certified Peer Specialist, having volunteered nearly 500 hours in the shelter I once lived in. Please VOTE YES on Measure 26-210 to continue funding the lifesaving work of the organizations that helped prevent ME from living on the streets of Portland.

Jennifer Langston, Portland

*(This information furnished by Cole Merkel, HereTogether)*

## Metro Measure 26-210

### ARGUMENT IN FAVOR

**Homelessness is solvable. We know what to do. We just need your help.**

There's no greater prescription for the health of the individual and our community than having safe and secure housing.

As healthcare providers, we understand that everything we do to try to secure or repair health challenges is dependent on having a stable home. Nowhere has this become more clear than in the coronavirus challenge. **There are many in our community who are left with literally no place to shelter safely.** People with disabilities and existing medical conditions are disproportionately represented among them; people without severe medical conditions who experience homelessness soon develop them.

Measure 26-210 will ensure increased access and critical services needed for people currently experiencing homelessness, and will help prevent people with existing medical concerns - **such as veterans, seniors, and people with disabilities** - from experiencing homelessness due to their age and condition.

**“Too many people are forced to choose between rent, groceries, or medicine. And the truth is, these needs are all inter-related.**

**Once someone is safely housed, they are more likely able to put food in their bodies several times a day, get restful sleep, and take medications correctly. Shelter, food, and water are foundational basic needs.”** – Imelda Dacones, MD, President and CEO Northwest Permanente, on behalf of Kaiser Permanente Northwest

**“We believe the recovery process begins with a safe, affordable, and healthy place to live. With this foundation, individuals can focus on their health, connect with families and friends, and move forward in shaping a productive and meaningful life.”** - Dr. Derald Walker, President & CEO, Cascadia Behavioral Healthcare

We urge you to vote yes by May 19.

**Care Oregon  
Cascade AIDS Project  
Cascadia Behavioral Healthcare  
Central City Concern  
Healthshare of Oregon  
Kaiser Permanente  
Legacy Health  
Luke-Dorf  
Outside In  
Prism Health  
Providence Health & Services - Oregon  
Sequoia Mental Health**

*(This information furnished by Cole Merkel, HereTogether)*

*The printing of this argument does not constitute an endorsement by Clackamas County, nor does the county warrant the accuracy or truth of any statements made in the argument.*

## Metro Measure 26-210

### ARGUMENT IN FAVOR

#### Building a Stronger Community

The affordable housing crisis in the Portland metro region is pushing low-income families to the financial brink. Sometimes the only option is unsafe or over-crowded housing conditions that put everyone at risk of eviction; **they even end up homeless.**

Every night in our community, thousands of people are sleeping on the streets; thousands more are in shelters or their cars. While we do our best to provide affordable housing opportunities for people to stay safely housed and to transition back into housing, **every day more and more people experience homelessness for the first time.**

Our community did the right thing by passing affordable housing construction bonds. We need to do the right thing again. Measure 26-210 will allow us to maximize the success of low-income housing dollars and help more families get the supportive services they need to transition from the trauma and instability of being unhoused to the stable life of having a place to call home.

**We are committed to engaging underrepresented communities and building strong community partnerships that promote equitable public policies.** Measure 26-210 does both of these things to provide essential supportive services for people to successfully stay in their homes.

Please join us in voting YES by May 19 on Measure 26-210.

Catholic Charities of Oregon  
Central City Concern  
Community Development Partners  
Community Partners for Affordable Housing  
Hacienda Community Development Corporation  
Housing Oregon  
Human Solutions  
Innovative Housing  
Nathan Teske, Executive Director, Bienestar  
Northwest Housing Alternatives  
Proud Ground  
REACH Community Development  
ROSE Community Development  
Transition Projects

*(This information furnished by Cole Merkel, HereTogether)*

## Metro Measure 26-210

### ARGUMENT IN FAVOR

Oregon Business Leaders say  
**YES to Regional Homeless Services**  
**VOTE YES on Measure 26-210**

**Homelessness is the number one concern of businesses throughout the region,** as we understand that the Portland metro region is currently experiencing both an affordability and a homelessness crisis.

Everyone in the community suffers when people experience homelessness. We are proud to be part of the community, as individuals and as business leaders, supporting this measure that will provide the solutions for ending people's homelessness.

The 1% tax on local profits from large businesses is a reasonable and fair approach—and the need is undeniable. That is why, as business owners in our region, we urge voters to join us in saying yes to Measure 26-210

**“Like so many in the local business community, the Portland Thorns and Timbers deeply understand that those two words — business, and community — are intertwined,”** says Mike Golub, Portland Timbers and Thorns. **“Supporting the HereTogether measure is a critical step toward making a major difference in the lives of tens of thousands of our neighbors.”**

Avenue Agency  
Blackbird Benefits Collective  
Bozz Media  
Business for a Better Portland  
CareOregon  
Cascadia Partners  
Community Development Partners  
Downtown Development Group  
Ear Trumpet Labs  
Eickhof Creative Shop  
Foundation  
Fubonn Shopping Center  
Fuze7 Marketing  
Gard Communications  
Health Share of Oregon  
Holst Architecture  
Kaiser Permanente  
Lara Media Services  
Legacy Health  
Love Portland Group, Realtors  
Marigold Coffee  
Neighbors Realty  
Neil Kelly Co  
Pixelspoke  
Portland Business Alliance  
Portland Timbers and Thorns  
Providence Health & Services - Oregon  
Reichard and Associates  
Ride Report  
Rosenbaum Financial  
Russell Fellows Properties  
Salazar Architect  
Smith + Connors  
Titan Freight Systems  
TMT Development  
Worksystems

**Individuals**  
Brett Schulz, Architect PC  
Chris Bonner, Principal Realtor Broker  
Dick Clark, CEO of The Portland Clinic  
Gun Denhart, Founder Hanna Andersson  
Hilary Bourassa, Realtor  
Maxwell Pratt, Realtor  
Ross Lienhart

*(This information furnished by Cole Merkel, HereTogether)*

*The printing of this argument does not constitute an endorsement by Clackamas County, nor does the county warrant the accuracy or truth of any statements made in the argument.*

## Metro Measure 26-210

### ARGUMENT IN FAVOR

OREGON EDUCATORS AND TEACHERS ARE VOTING YES ON MEASURE 26-210

**Oregon has the highest number of children experiencing homelessness nationwide.**

The untold secret of Oregon's homeless children is that they're the least likely to be seen on the streets. Their families are living in shelters, in vehicles, or doubled-up with others; locations where parents do not control the roof over the heads of their children; in insecure and unsafe environments.

**Across the metro region, over 7,000 students experience homelessness every school year.** Portland Public Schools and the Beaverton School District have the greatest number of homeless students: more than 1,500 in each district; one in ten students in the Reynolds district has experienced homelessness.

**Many of our students come to school worried about where their family will sleep that night.** Children are especially vulnerable to lifelong impacts of housing instability.

It is crucial that families and children experiencing homelessness receive the services and supports they need to stay housed and transition out of homelessness as soon as possible.

We must support our community's most vulnerable members - our future leaders - so that **the strain of simply surviving is no longer at the forefront of their mind.** Instead, children are allowed to be children, to be students, and to focus on simply growing up to be their best selves.

**Vote YES for supportive homeless services on Measure 26-210.**

Portland Association of Teachers  
Beaverton Education Association  
Hillsboro Classified United, American Federation of Teachers  
Local 4671

Andrea Valderrama, Chair, David Douglas School Board  
Carla C. Piluso, Member, Gresham-Barlow School Board  
Mitzi Bauer, Member, North Clackamas School Board  
Kathy Wai, North Clackamas School Board  
Martha Spiers, Member, Oregon City School Board  
Elizabeth Durant, Member, Parkrose School Board  
Ricki Ruiz, Reynolds School Board  
Michelle DePass, Director, Portland Public Schools Board  
Ruth Adkins, former member, Portland Public Schools Board  
Pam Knowles, former member, Portland Public Schools board  
David Wynde, former member, Portland Public Schools board

*(This information furnished by Cole Merkel, HereTogether)*

*The printing of this argument does not constitute an endorsement by Clackamas County, nor does the county warrant the accuracy or truth of any statements made in the argument.*

## Metro Measure 26-210

### ARGUMENT IN FAVOR

JOIN US IN VOTING YES ON MEASURE 26-210

Adelante Mujeres  
Asian Pacific American Network of Oregon (APANO)  
Centro Cultural  
Coalition of Communities of Color  
El Programa Hispano Católico  
Hacienda Community Development Corporation  
Immigrant Refugee & Community Organization  
Latino Network  
Living Cully  
Native American Youth and Family Center  
Nathan Teske, Executive Director of Bienestar  
Unite Oregon

**“This measure will pair proven solutions and community based expertise with the affordable housing necessary to change the lived reality of our neighbors experiencing homelessness, ensuring enough care and resources are there to support communities of color and other historically marginalized communities in this time of need.”**

- Marcus C. Mundy, Executive Director,  
Coalition of Communities of Color

People of color have historically been targeted by systemic injustices and discriminatory policies, leading African and African American, Asian and Asian American, Hispanic and Latinx, Indigenous and Native American, Middle Eastern, Pacific Islander, refugee, and immigrant people to be disproportionately represented in the metro region's homeless population.

For people of color, the recent coronavirus only reinforced our understanding that we are both disproportionately represented among the very poorest and homeless and among the frontline service providers that our entire society depends upon.

Communities of color have also historically come together to create **strong, resilient communities** in the face of such systemic injustices. **We will do so again now**, as a health crisis and an affordability crisis is causing an excessive number of our community's members to experience homelessness.

Measure 26-210 will increase access to case managers and social workers, mental and physical health professionals, addiction treatment, job training, and other services necessary for ensuring our siblings, children, and families of color living on the street, in their car, or doubled-up with people already struggling financially are successfully living stable and productive lives again.

**Please join us and vote YES for Measure 26-210 by May 19.**

*(This information furnished by Cole Merkel, HereTogether)*

## Metro Measure 26-210

### ARGUMENT IN FAVOR

#### METRO REGION FAITH LEADERS SAY VOTE YES ON MEASURE 26-210 TO HELP OUR MOST VULNERABLE COMMUNITY MEMBERS

As leaders in our faith communities, we follow our religious teachings of kindness, compassion, and loving our neighbors as ourselves. Some of our neighbors need specific supports, like food, clothing, and shelter, which we provide through food pantries, homeless shelters, and clothing drives. Unfortunately, the number of our neighbors in need of help too often exceeds our capacity for doing so.

Over 5,000 people are sleeping on our streets every night. Up to 30,000 people are sleeping on the streets, in cars, or doubled-up in places not meant for sleeping. And 56,000 households are one missed paycheck away from slipping into homelessness too, many of them for the very first time.

Now more than ever, the coronavirus highlights the need and opportunity for us to live our values. It is not for us to understand why everything happens, but it is important to understand that **how we respond says everything about who we are and the strength of our faith and community.**

There is something we all can do to make sure that so many people are not again placed in such a precarious and vulnerable position in the first place. We hope you will join us in not only supporting this measure but making sure none of our friends and neighbors turn their backs on the homeless community, especially now.

**Join us in our support of Measure 26-210, and show your faith in humanity by voting YES.**

Ainsworth United Church of Christ  
Augustana Lutheran Church  
Catholic Charities of Oregon  
Ecumenical Ministries of Oregon  
First Unitarian Church Committee on Hunger and Homelessness  
Havurah Shalom  
Interfaith Alliance on Poverty  
Metropolitan Alliance for Common Good  
Portsmouth Union Church  
Rev. Dr. Chuck Currie  
Rev. Adam Ericksen  
Rev. Dr. W. J. Mark Knutson  
Rabbi Debra Kolodny  
Rev. Heather Riggs  
Rev. M. Lynne Smouse

*(This information furnished by Cole Merkel, HereTogether)*

*The printing of this argument does not constitute an endorsement by Clackamas County, nor does the county warrant the accuracy or truth of any statements made in the argument.*

## Metro Measure 26-210

### ARGUMENT IN FAVOR

**We must ensure that hard-working people can meet their basic necessities, both while housed and should they be experiencing homelessness.  
Vote YES on Measure 26-210**

If you are gainfully employed, you should never have to choose between paying rent, buying food, and accessing medical care, and yet for far too long, the hardworking families of the Portland metro area have been forced to do just that.

Our unions represent more than 60,000 members across the metro area who work in both the public and private sector. Our members provide the essential services that make our communities work. We are teachers, nurses, janitors, bus drivers, social workers, retail clerks, public servants, and other people in service industries.

**As more and more families pay more than half of their income to rent,** bills pile up, stomachs are hungry, vehicle problems can't be fixed, school supplies go unpurchased - families slip into homelessness. **We must have more supportive services** to keep this situation from occurring, and if it does, to ensure that families stay together and have the resources they need to get back on their feet as soon as possible.

This measure will provide:

- **More case managers** for individual service to help people navigate the systems of services efficiently and for maximum assistance
- **Increased mental, physical, and addiction health services** for individuals and families in need of such care
- **Programs such as job training, rent assistance, and other prevention and transitional services** that help people stay stably housed and improve their economic situation

We support Measure 26-210 and ask that you vote YES by May 19.

AFSCME Local 3580  
Beaverton Education Association  
Hillsboro Classified United, American Federation of Teachers Local 4671  
Portland Association of Teachers  
United Food and Commercial Workers Local 555

*(This information furnished by Cole Merkel, HereTogether)*

## Metro Measure 26-210

### ARGUMENT IN FAVOR

#### Our Region's Health Care Providers Support Measure 26-210

As leading nonprofit health care providers in the Portland metro region, we know that **housing is health**.

Without a safe, stable place to call home, it's nearly impossible for our patients to focus on basic health and medical needs, and for our doctors and nurses to keep them healthy.

Patients who are homeless have a higher rate of hospital admissions and emergency room visits, while also suffering from poorer health outcomes and higher mortality rates. **This disparity is even more devastating during the COVID-19 public health crisis we are confronting.**

While some of us are business competitors, we are all in the business of keeping people healthy. That's why we support Measure 26-210 - **we are all in this together, to serve people experiencing homelessness in our community.**

In Oregon and across America, we and other health care organizations are investing in housing development, supportive services, safety-net clinics, community health workers, and much more.

Here in the metro region, we are working collaboratively with government and nonprofit partners to address a key driver of health - housing instability and homelessness - to improve the health and well-being of the communities we serve.

**As major health care systems, we won't back down from our commitment to helping house and care for vulnerable people in our community.** But with thousands of families and individuals experiencing or at risk of homelessness across the region, we know our efforts cannot meet the entire need. We urge a Yes vote on Measure 26-210 so that together, our region can make a historic investment in the health and well-being of the entire community.

CareOregon  
Health Share of Oregon  
Kaiser Permanente  
Legacy Health  
Providence Health & Services - Oregon

*(This information furnished by Cole Merkel, HereTogether)*

## Metro Measure 26-210

### ARGUMENT IN FAVOR

#### CLACKAMAS COUNTY IS VOTING YES ON MEASURE 26-210 FOR SUPPORTIVE HOMELESS SERVICES

Everyone in our community is affected by the homelessness crisis. Epecially here in Clackamas County, the impact of homelessness is present around us every single day.

Hardworking families should be able to afford to put a roof over their head, buy food to eat, and pay their bills. But for too many people—our friends, family, and neighbors who call Washington County home—that dream isn't a reality.

Please join us in voting YES on Measure 26-210 by May 19. **Together, we can support our most vulnerable Clackamas County community members with the supportive services they need to transition into safe and stable homes, or stay in their safe and stable homes, and keep our community healthy here, together.**

Governor Kate Brown  
U.S. Senator Jeff Merkley  
U.S. Representative Earl Blumenauer  
State Treasurer Tobias Read

#### Board of Clackamas County Commission

Chair Jim Bernard  
Commissioner Sonya Fischer  
Commissioner Ken Humberston

#### City of Milwaukie

Mayor Mark Gamba  
Council President Angel Falconer  
Councilor Lisa Batey  
Councilor Kathy Hyzy  
Councilor Wilda Parks

#### City of Lake Oswego

Councilor Theresa M. Kohlhoff

#### City of West Linn

Council President Teri Cummings  
Councilor Richard Sakelik

#### City of Happy Valley

Council President Brett Sherman

#### Clackamas River Water Commissioner

Naomi Angier

State Senator Shemia Fagan

Former State Representative Dave McTeague

Oregon City School Board Member Martha Spiers

North Clackamas School Board Members

Mitzi Bauer  
Kathy Wai

Rev. Adam Ericksen  
Rev. Heather Riggs

CareOregon  
Casa of Oregon  
Clackamas Service Center  
Clackamas Women's Services  
Health Share of Oregon  
Homeless Solutions Coalition of Clackamas County  
Kaiser Permanente  
Legacy Health  
Love INC of Clackamas County  
LoveOne  
NAMI Clackamas  
Northwest Family Services  
Northwest Housing Alternatives  
Oregon Energy Fund  
Oregon Food Bank  
Providence Health & Services - Oregon  
The Father's Heart, Oregon City  
Welcome Home Coalition

*(This information furnished by Cole Merkel, HereTogether)*

*The printing of this argument does not constitute an endorsement by Clackamas County, nor does the county warrant the accuracy or truth of any statements made in the argument.*



## Metro Measure 26-210

### ARGUMENT IN FAVOR

Schell, Gould and Walta  
Statement of Support for Metro's  
Supportive Housing Services Ballot Measure

**It is essential to vote YES on Measure 26-210 to address the Portland metro area's homelessness crisis with concrete solutions.**

As professionals with medical and administrative law experience, we have spent three years independently studying the homelessness situation in the Portland metro area and statewide. We recently published a report with our 22 recommendations as a result of our study, for what can be done to address the homelessness crisis, all of which can be found at [homelessnessoregon.com](http://homelessnessoregon.com).

One of the key recommendations in our report is for voters to approve Measure 26-210. This measure would raise about \$250 million a year for ten years, to be divided among the three counties, to increase supportive services that are essential for addressing the Portland metro area's homelessness problem.

We support Measure 26-210. All of our independent research suggests that voting YES on Measure 26-210 by May 19 is the most effective way we can all come together to fund the solutions necessary for solving people's homelessness in our community as soon as possible.

Dr. Douglas Walta, MD  
John W. Gould, JD  
Steven R. Schell, JD

*(This information furnished by Cole Merkel, HereTogether)*

## Metro Measure 26-210

### ARGUMENT IN FAVOR

JOIN US IN VOTING YES ON MEASURE 26-210  
We are HereTogether.

HereTogether is a coalition of more than 150 organizations, including nonprofit service providers, people of color, people with lived experience of homelessness, elected officials, faith communities, business leaders, and other members of our community. We have been working for more than a year to structure an effective measure that will enable real, impactful solutions for our region's homelessness crisis.

Measure 26-210 will provide the services necessary to support our neighbors, siblings, children, and families experiencing or at risk of experiencing homelessness.

**Please join us and vote YES for Measure 26-210 by May 19.**

#### State/Federal Elected Leaders

Governor Kate Brown  
U.S. Senator Jeff Merkley  
U.S. Congressman Earl Blumenauer  
U.S. Congresswoman Suzanne Bonamici  
State Treasurer Tobias Read

#### City Leaders

Portland Mayor Ted Wheeler  
Portland City Commissioner Chloe Eudaly  
Beaverton Mayor Denny Doyle  
Forest Grove Mayor Peter Truax  
Gresham City Councilor Eddy Morales  
Happy Valley Council President Brett Sherman  
Lake Oswego City Councilor Theresa Kohlhoff  
Wood Village Mayor T. Scott Harden

#### Clackamas County Commissioners

Chair Jim Bernard  
Commissioner Sonya Fischer  
Commissioner Ken Humberston  
River Water Commissioner Naomi Angier

#### Metro Councilors

President Lynn Peterson  
Councilor Bob Stacey  
Councilor Christine Lewis  
Councilor Craig Dirksen  
Councilor Juan Carlos Gonzalez  
Councilor Sam Chase  
Councilor Shirley Craddock

#### Milwaukie City Councilors

Mayor Mark Gamba  
Council President Angel Falconer  
Councilor Kathy Hyzy  
Councilor Lisa Batey  
Councilor Wilda Parks

#### Multnomah County Commissioners

Chair Deborah Kafoury  
Commissioner Jessica Vega Pederson  
Commissioner Lori Stegmann  
Commissioner Sharon Meieran  
Commissioner Susheela Jayapal

#### State Legislators

House Speaker Tina Kotek  
Representative Alissa Keny-Guyer  
Representative Rob Nosse  
Representative Carla Piluso  
Senator Shemia Fagan  
Senator Michael Dembrow  
Dave McTeague, Former State Representative  
Chip Shields, Former State Senator

#### Washington County Commissioners

Kathryn Harrington, Washington County Commission Chair  
Commissioner Dick Schouten

#### West Linn City Councilors

Council President Teri Cummings  
Councilor Richard Sakelik

*(This information furnished by Cole Merkel, HereTogether)*

*The printing of this argument does not constitute an endorsement by Clackamas County, nor does the county warrant the accuracy or truth of any statements made in the argument.*

## Metro Measure 26-210

### ARGUMENT IN FAVOR

HereTogether Coalition Endorsers, cont.

#### Education

Portland Association of Teachers  
Beaverton Education Association  
Hillsboro Classified United, American Federation of Teachers Local 4671  
Andrea Valderrama, Chair, David Douglas School Board  
Carla C. Piluso, Member, Gresham-Barlow School Board  
Mitzi Bauer, Member, North Clackamas School Board  
Kathy Wai, Member, North Clackamas School Board  
Martha Spiers, Member, Oregon City School Board  
Elizabeth Durant, Member, Parkrose School Board  
Michelle DePass, Director Board of Education, Portland Public Schools  
Ruth Adkins, Former Member, Portland Public School Board  
Pamela Knowles, Former Member, Portland Public Schools Board  
David Wynde, Former Member, Portland Public Schools Board  
Ricki Ruiz, Member, Reynolds School Board  
Jamie McLeod-Skinner, Member, Jefferson County Education Service District

#### Faith Leaders

Interfaith Alliance on Poverty  
Catholic Charities of Oregon  
Ecumenical Ministries of Oregon  
First Unitarian Church Committee on Hunger and Homelessness  
Ainsworth United Church of Christ  
Augustana Lutheran Church  
Havurah Shalom  
Metropolitan Alliance for Common Good  
Portsmouth Union Church  
Rabbi Debra Kolodny  
Rev. Adam Ericksen  
Rev. Dr. Chuck Currie  
Rev. Dr. W. J. Mark Knutson  
Rev. Heather Riggs  
Rev. M. Lynne Smouse López

#### Other Endorsing Organizations

Adelante Mujeres  
AFSCME Local 3580  
Asian Pacific American Network of Oregon  
Assist Program  
Avenue Agency  
Blackbird Benefits Collective  
Bradley Angle  
Brett Schulz, Architect PC  
Business For A Better Portland  
CareOregon  
CASA of Oregon  
Cascadia Partners LLC  
Cascade AIDS Project  
Cascadia Behavioral Healthcare  
Central City Concern  
Centro Cultural  
Chris Bonner, Principal Broker, Hasson  
Clackamas Service Center  
Clackamas Women's Services  
Coalition of Communities of Color  
ColumbiaCare Services  
Community Action, Washington County  
Community Alliance of Tenants  
Community Development Partners  
Community Partners for Affordable Housing  
Creative Arts Recovery  
Dick Clark, CEO of The Portland Clinic  
DoGood Multnomah  
Downtown Development Group  
Dr. Ben Ware  
Dr. Douglas Walta  
Ear Trumpet Labs  
Easterseals Oregon  
Eickhof Creative Shop  
El Programa Hispano Católico  
Evan King, LCSW, Realtor Foundation  
Fubonn Shopping Center

*(This information furnished by Cole Merkel, HereTogether)*

## Metro Measure 26-210

### ARGUMENT IN FAVOR

HereTogether Coalition Endorsers, cont.

Fuze7 Marketing  
Gun Denhart, Founder, Hanna Andersson  
Hacienda Community Development Corporation  
Healthshare of Oregon  
Holst Architecture  
HomePlate Youth Services  
Homeless Solutions Coalition of Clackamas  
Housing Oregon  
Human Solutions  
Immigrant and Refugee Community Organization  
Impact NW  
Innovative Housing  
JOIN  
Kaiser Permanente  
Kate McNulty LCSW  
Lady Dutchman Leathers  
Lara Media Services  
Latino Network  
Legacy Health  
Living Cully  
Liz Fuller, PBA Board Member  
Love INC of Clackamas County  
Love Portland Group  
LoveOne  
Luke-Dorf  
Marigold Coffee  
Maxwell Pratt, Realtor  
Mitchell Hornecker, Former PBA Board Chair  
Nathan Teske, Executive Director, Bienestar  
National Alliance on Mental Illness, Clackamas  
Native American Youth and Family Center  
Neighbors Realty  
Neil Kelly Company  
New Avenues for Youth  
Northwest Family Services  
Northwest Housing Alternatives  
Northwest Pilot Project  
Operation Nightwatch Portland  
Oregon Energy Fund  
Oregon Food Bank  
Oregon Trails Coalition  
Oregon Working Families Party  
Outside In  
Outside the Frame  
p:ear  
PixelSpoke  
Portland Business Alliance  
Portland Gray Panthers  
Portland Homeless Family Solutions  
Portland Timbers & Thorns  
Portland: Neighbors Welcome  
Prism Health  
Project Homeless Connect  
Proud Ground  
Providence Health & Services - Oregon  
REACH Community Development  
Reichard & Associates  
Ride Report  
ROSE Community Development  
Rosenbaum Financial  
Ross Lienhart  
Russell Fellows Properties  
Salazar Architect  
Sequoia Mental Health  
Smith + Connors  
St. Mary's Home for Boys  
Bozz Media  
Steve Rudman  
Stone Soup PDX  
Street Roots  
The Father's Heart  
The Rosewood Initiative  
TITAN Freight Systems  
Transition Projects  
Unite Oregon  
United Food and Commercial Workers Local 555  
Welcome Home Coalition  
Winter Shelter of Forest Grove and Cornelius  
Worksystems, the Portland Metro Workforce Development Board  
YWCA of Greater Portland

For the complete list visit [weareheretogether.org](http://weareheretogether.org)

*(This information furnished by Cole Merkel, HereTogether)*

*The printing of this argument does not constitute an endorsement by Clackamas County, nor does the county warrant the accuracy or truth of any statements made in the argument.*

## Metro Measure 26-210

### ARGUMENT IN FAVOR

#### Ecumenical Ministries of Oregon Urges YES Vote

We need to address Oregon's worst-in-the-nation rate of children and youth homelessness.

Far too often in our region, if a student experiencing homelessness asks her school's homelessness liaison for help, she will not receive a housing voucher, and she will not receive a bed at a shelter. Because of a lack of federal, state and local investment in housing supports, school staff will hand the student and her family one of these - a tent.

Nationally, at the state level and regionally, we have failed our children and youth. Last school year, in the

- Beaverton School District, over 1,900 students experienced homelessness;
- In Portland Public Schools, that number was over 1,200 students;
- In Reynolds School District, nearly 900 students experienced homelessness.
- In fact, every school district in our region has similarly tragic numbers of houseless students.

A survey conducted by the U.S. Conference of Mayors stated that "the most frequently cited reasons for family homelessness are a lack of affordable housing, poverty, and domestic violence."

The National Center on Family Homelessness reports that: "Children without stable homes are more than twice as likely as others to repeat a school grade, be expelled or suspended, or drop out of high school. A quarter or more of homeless children have witnessed violence."

Nationally:

- Latinx youth have a 33% higher risk of reporting homelessness.
- African American youth have an 83% higher risk of reporting homelessness.
- LBGTQIA+ youth have a 120% higher risk of reporting homelessness.

These inequities and terrible figures reflect the reality of far too many of our neighbors in this region.

In embrace of our responsibility for one another, EMO urges a YES vote on Metro Measure 26-210.

\*

EMO is an association comprising of 15 denominations and over 150 congregations, organizations, and interfaith partners, connecting hundreds of thousands of diverse members of the faith community all across the state.

*(This information furnished by Britt Conroy, Public Policy Director, Ecumenical Ministries of Oregon)*

## Metro Measure 26-210

### ARGUMENT IN OPPOSITION

This Measure is not what it says. Vote No!

- **It will not significantly reduce homelessness because it ignores proven remedies to get people off the street; instead favoring new spending programs.**

Many of our homeless suffer from mental health and/or drug addictions. Yet the bulk of the monies raised by this income tax will not go to treating these first order needs. These new spending programs could end up drawing homeless from other states, as for instance Seattle is buying bus tickets to reduce their homeless.

- **Administrative costs will greatly exceed 5% limit.**

Metro gets a cut of 5% off the top of monies raised. But then the remainder flows to County governments which once again will have their own cut of these new monies. Additional administrative costs are likely with non-profit administration.

- **Most of the funds are for rental assistance, not treatment.**

Yet, only this past November, we started paying a hike in our property taxes to pay for affordable housing. Moreover, the Federal government is already providing rent vouchers and other rent assistance. So, this Measure duplicates to some degree rent assistance programs already in place.

- **Chances are this newly created income tax will expand to include middle class families.**

Metro talked about an income tax for funding an even bigger transportation funding package this coming November.

- **Do you really want to file your personal income tax return with another government tax bureaucracy?**

Even if you never expect to earn high income, odds are we would have to still file our return with Metro in some form or another.

- **This income tax also applies to local businesses, at a time when many need to recover after forced shutdowns due to the virus outbreak.**

Thanks for considering this opinion concerning measure 26-210,

Bob Clark  
Clackamas County resident

*(This information furnished by Bob Clark)*

*The printing of this argument does not constitute an endorsement by Clackamas County, nor does the county warrant the accuracy or truth of any statements made in the argument.*

## Metro Measure 26-210

### ARGUMENT IN OPPOSITION

#### VOTE NO ON 26-210: ENOUGH IS ENOUGH

Metro is at it again. Last November, Metro raised taxes \$475 million for parks and nature. Now, Metro wants \$2.5 billion for housing services. This November, Metro has plans for \$3.8 billion in taxes to expand light rail. That's **nearly \$6.8 billion in new taxes**—in one year alone.

Families are losing jobs. Businesses are closing. **Our region is in a recession.**

We can't afford Metro's reckless spending. **We can't afford Metro's new taxes.**

#### VOTE NO ON TWO NEW INCOME TAXES

**Measure 26-210 punishes struggling families and businesses** with two new income taxes. Many small and medium sized business owners will be taxed twice by Metro's measure. First on their business income, then on their personal income.

Measure 26-210 imposes thousands of dollars in new taxes on struggling families. Families who can't make their mortgage, can't afford their car payment, can't afford their student loans. In these tough times, **Measure 26-210 may create more homeless** than it helps.

Metro doesn't care. **Metro had a chance to pull this measure** once it learned how COVID-19 would destroy families and businesses. Instead, Metro chose to go full speed ahead with its punishing taxes.

#### VOTE NO ON METRO'S MISSION CREEP

Metro's mission is land use and transportation planning. How's that working out for you? You're stuck traffic and our housing market's a mess.

Measure 26-210 expands Metro's mission to include rental subsidies and homeless services. Metro wants you to pay for their mission creep. **Given Metro's history of misplaced priorities, do you trust them to get it right this time?**

#### VOTE NO ON CHAOS AND CONFUSION

Measure 26-210 was thrown together in under a month. And it shows. **Metro has no idea** who will actually have to pay the new taxes or how the taxes will be collected and enforced. **Metro has no plan** to reduce the number of actual homeless.

#### VOTE NO ON 26-210

*(This information furnished by  
Eric Fruits, Ph.D., Cascade Policy Institute)*

## Metro Measure 26-210

### ARGUMENT IN OPPOSITION

The Oregon Small Business Association  
Vote No on 26-210

**COVID-19 caused the worst economic shock since the Great Depression.**

**It will take months or years to recover family wage jobs lost during what Gov. Kate Brown appropriately declared a State of Emergency.**

COVID-19 is causing unapparelled shutdowns and slowdowns as many local small businesses are forced to make painful layoff choices in order to preserve cash and try to survive. Many families consequently are in financial crisis as they go without regular paychecks. This measure is the wrong tax at the worst possible time.

For those small businesses still hanging on and trying to make payroll or hoping to hire back valued former employees, this additional demand on scarce cash flow could be a death knell.

We also must consider the accumulation of new expenses imposed by state and local governments on small businesses, such as the new state gross receipts tax that forces payments even when a business has had huge losses – as many have because of COVID-19.

**The best solution against homelessness is a job.**

**Small businesses want to hire – but can't if you drown them in new taxes.**

Instead of reducing homelessness, Metro's proposed tax likely increase homelessness by slowing down a post-COVID recovery.

Please vote NO on Measure 26-210

*(This information furnished by  
TJ Reilly, Oregon Small Business Association)*

*The printing of this argument does not constitute an endorsement by Clackamas County, nor does the county warrant the accuracy or truth of any statements made in the argument.*

## Metro Measure 26-210

### ARGUMENT IN OPPOSITION

**6 ways Oregon is attracting homeless from across America and overwhelming our local shelters.**

**Nearly 1 of 3 Portland homeless come from other states**  
(OPB 3-13-18).

In 2019 most states saw a decline in homelessness, but Oregon's numbers soared. Why? Because homeless populations left others states to come to Oregon to take advantage of our unique benefits.

1. The word is out. "People are coming here because we make it comfortable to be homeless" as quoted by a Portland homeless advocate in the national *City Journal Magazine*. (Winter 2016)

2. Multnomah County wasted tax dollars putting homeless people in expensive hotels (\$3,318 a month) before it had to cancel the program because it became too popular. (OPB 3-13-18)

3. Oregon allowed food stamp use for 5 years—that's 3 years longer than other states. *The Atlantic* called Oregon a "Welfare Utopia". (5/31/16)

4. Multnomah County's risky "no-refuse" shelter guarantee attracted too many out-of-area takers, which overwhelmed the system and led to it being cancelled. (OPB 3-13-18)

5. Portland's "sleep anywhere" policy allowed widespread trespass-camping on private property. This led to the Springwater Corridor campsite, at 500 campers, was the nation's LARGEST homeless camp. (Heritage Foundation 10/18/19)

6. When Portland failed to enforce basic laws, homeless people discovered they can do things they couldn't do in other cities. Not enforcing minor laws led to breaking more laws. Portland homeless accounted for the MAJORITY of police arrests in 2017. (*Oregonian* 6/27/18).

**No amount of taxes will fix the problem as long as our backward policies continue to attract homeless from other states.**

Stop measure 26-210. It'll only fund homeless from other states. Please fix the bigger problems first.

Taxpayer Association of Oregon Urges No on 26-210

—Please follow us online at [OregonWatchdog.com](http://OregonWatchdog.com). We've been fighting government waste, fraud, and abuse for more than 20 years.

(This information furnished by  
Jason Williams, Taxpayers Association of Oregon)

## Metro Measure 26-210

### ARGUMENT IN OPPOSITION

**No New Taxes until they stop wasting existing tax dollars.**

**Tax \$\$\$ wasted on rewarding pot smoking, drug use**

● Portland awarded \$125,000 of our tax dollars to two pot shops. These business assistance funds come at a time when Oregon has a staggering six-year surplus supply of marijuana, which is making the drug even cheaper. This doesn't help our homeless drug abuse crisis. (*Portland Business Journal* 1/22/19)

● A Tigard meth house was given a \$30,000 taxpayer-funded housing assistance grant even as it was racking up neighborhood complaints and multiple police drug raids. (KGW-TV 6/14/18)

**Tax \$\$\$ wasted on homeless boondoggles**

● Portland wasted nearly \$250,000.00 in tax dollars building a modular homeless shelter it NEVER used. (*Oregonian* 9/13/18)

● Multnomah County wasted \$700,000.00 turning a former strip club into a Gresham shelter that lasted barely a year before it was evacuated as an emergency health hazard. (*Gresham Outlook* 2/28/18)

● Portland wasted millions on the Cannady affordable housing project only to have it sit mostly VACANT a year later due to ongoing problems and possible violations. (*Willamette Week* 2/6/19)

**Tax \$\$\$ wasted on blocking good solutions to help homeless**

● Politicians wasted \$58 million building the never-used Wapato Jail and now have actively blocked private citizens from turning it into a homeless shelter. This is a stunning example of how politicians can throw away \$58 million in tax dollars as if it was nothing and then stand in the way of people trying to help. (KGW 10/10/19)

Pouring a quarter-billion dollars in higher taxes into more boondoggles and government waste will not help the homeless, but instead make it worse.

Taxpayer Association of Oregon Urges No on 26-210

—Please follow us online at [OregonWatchdog.com](http://OregonWatchdog.com). We've been fighting government waste, fraud, and abuse for more than 20 years.

(This information furnished by  
Jason Williams, Taxpayers Association of Oregon)

The printing of this argument does not constitute an endorsement by Clackamas County, nor does the county warrant the accuracy or truth of any statements made in the argument.

## Metro Measure 26-210

### ARGUMENT IN OPPOSITION

Don't raise taxes in an economic crisis!

Front page of the *Oregonian* March 20, 2020:

**“Jobless claims surge 3,200% this week”**

**“Unemployment rate could rise as high as 20%”**

**“Nearly 50,000 people would be looking for work”**

On March 20, the *Portland Tribune* editorial warned:

“This is not the time for more taxes...  
Raising taxes by that amount [\$230 million]  
in the face of a global recession is poor public policy.”

Thousands of family-owned restaurants and small local shops are on the brink of closing. They need income to hire people. They need paying customers to keep afloat. The massive 26-201 tax robs small business owners of both their income and their customers.

#### The politicians have plenty of money.

The State of Oregon already has an \$84 billion biennial budget that could be tapped into to help the homeless. The state spends more tax cash per capita than 46 other states. The money is there.

The METRO government already has \$680 million in just-approved (2019) property taxes going for affordable housing to help the homeless. Now they want more?

#### It comes too late.

The *Portland Tribune* said the tax “would not even be collected until 2021. So, in fact, this measure would do nothing to address the immediate 2020 crisis.” (3/20/20)

#### The damage caused will be lifelong.

The #1 poverty cure is a job—why tax jobs?

The small businesses owners destroyed by 26-210 will become homeless, bankrupt, or on welfare.

The family restaurants destroyed by 26-210 will be replaced by low-wage corporate chain restaurants.

#### Vote No on Measure 26-210

**Don't throw more local businesses into bankruptcy with a massive tax increase. To prevent the expected 20% jobless rate, businesses need money—not taxes.**

Taxpayer Association of Oregon urges No on 26-210

—Please follow us online at [OregonWatchdog.com](http://OregonWatchdog.com). We've been fighting government waste, fraud, and abuse for more than 20 years.

*(This information furnished by  
Jason Williams, Taxpayers Association of Oregon)*

## Metro Measure 26-210

### ARGUMENT IN OPPOSITION

#### LOCAL CHAMBERS URGE NO VOTE ON METRO'S \$250 MILLION TAX INCREASE

Tualatin Chamber of Commerce  
Gresham Area Chamber of Commerce  
Beaverton Area Chamber of Commerce  
North Clackamas Chamber of Commerce  
Oregon City Chamber of Commerce

Metro-area Chambers have a long track record of supporting local tax measures to fund critical public services. However, we urge voters to **oppose Metro's new \$250 million tax increase** out of concern for the health of our economy during a global pandemic and inevitable recession.

#### VOTE NO ON METRO'S MEASURE 26-210

- The COVID-19 “coronavirus” crisis has devastated thousands of local businesses and working families. Millions of dollars in new taxes at this time will make the situation worse.
- Measure 26-210 is a **blank check** to the Metro government. Metro leaders have failed to articulate a plan to ensure that the \$250 million raised by this tax is managed in an accountable manner.
- Metro's Measure 26-210 was developed in a backroom without adequate public input from key community leaders.

#### METRO RESIDENTS ARE TAXED ENOUGH ALREADY

Portland-area businesses and residents are already trying to keep up with billions of dollars of new taxes recently passed by the state and local governments. Measure 26-210 adds uncertainty at a time when our communities are looking for economic stability. Stacking additional taxes on the same dollar, especially during this time of crisis, will make it difficult for businesses to survive and leave Oregon families paying higher prices. We must work to stabilize the local economy in the wake of COVID-19, not add millions of new taxes.

#### SMALL BUSINESSES FACE DOUBLE TAXATION UNDER MEASURE 26-210

Measure 26-210 unduly hurts small and medium-sized businesses. Most small businesses register as S-Corps or LLCs and will be very impacted by the 1% personal tax increase on income over \$125,000. These same taxpayers could also face the 1% business tax increase. Double taxation is the wrong approach.

#### REJECT MEASURE 26-210: OUR COMMUNITIES CANNOT AFFORD IT

*(This information furnished by Alliance for an Affordable Metro)*

*The printing of this argument does not constitute an endorsement by Clackamas County, nor does the county warrant the accuracy or truth of any statements made in the argument.*

## Metro Measure 26-210

### ARGUMENT IN OPPOSITION

#### Vote No on Measure 26-210

Today is different than yesterday. Our area employers are barely keeping their doors open.

**It's time to rebuild.**

**Not pass new taxes.**

**We simply can't afford it.**

The tax increases contained in Measure 26-210 will nearly double the rate of the brand new Commercial Activities Tax (CAT) just taking effect this year. There is no doubt that this measure will increase the costs of basic needs including groceries, housing and utility bills.

**At a time when we can least afford it.**

Long-term funding for homelessness is critical and needs to be addressed. This hastily drafted Measure is not the answer and will put what jobs are left at risk while raising the cost of basic necessities for current residents making it even less affordable to live in the Metro area.

Do not give Metro a \$250 Million blank check for the next 10 years. It's simply too costly and risky with no guarantees for a return.

**Can Metro families really afford more?**

We cannot consider these new personal and business taxes in a vacuum. Any new tax must be considered based on the cumulative effect of taxing the same dollar. In 2020 alone Metro residents will be asked to consider a slew of new, stacking taxes:

- \$250 million Metro business income and personal income tax increase
- \$16 million City of Portland gas tax renewal
- 3.9% personal income tax increase to fund universal preschool
- Multnomah County business income tax increase
- \$3 billion Metro transportation tax package
- \$1.4 billion Portland Public Schools bond
- \$405 million Multnomah County library bond

**At a time when we can least afford it.**

We simply can't consider adding new business and income taxes during this unprecedented time of crisis. Our employers must focus on rebuilding, keeping their doors open, shelves stocked, and paychecks signed.

**Vote No on Measure 26-210  
It's time to rebuild. Not pass new taxes.**

## Metro Measure 26-210

### ARGUMENT IN OPPOSITION

#### Oregon Farm Bureau Federation and Oregon Association of Nurseries OPPOSE Measure 26-210

The Metro area is home to thousands of acres of family farms and nurseries. They've grown our produce, Christmas trees and garden plants for many generations. These farms need certainty that they can keep operating during the COVID-19 crisis and afterward, when they are rebuilding from the economic damage of the crisis, not new taxes.

**Metro's family farms can't afford another tax**

Long-term funding for homelessness is should be prioritized. However, this hastily-drafted measure will reduce cash flow for local farm families at a time when they are struggling to keep their doors open. Many nurseries compete against growers from other states with lower cost burdens. This tax harms the ability to ship environmentally beneficial products across the country.

**Farmers need a break, not more taxes**

Farm net income is down 50% over the last four years, even before coronavirus. This tax will nearly double the rate of the brand-new corporate activities tax (CAT), which taxes low margin businesses, like farms and nurseries, even if they don't make a profit.

Measure 26-210 makes the current situation much worse. In addition to taxing businesses based on their business income, it also taxes personal income, which for most family farms means **double taxation**. Most farms and nurseries are LLCs and S-Corps; they pay personal income taxes on their business earnings, even after they pay business income taxes.

**Metro can't afford this tax either**

Countless businesses will be struggling to stay afloat as we recover from coronavirus. A new tax on family business will make that even harder. This measure risks putting family farms and nurseries out of business. We don't know the long-term consequences of the coronavirus crisis, but we do know this is the WRONG time for a new \$250 million tax.

**VOTE NO on Measure 26-210  
It's a LOSE-LOSE situation for family farms and nurseries**

*(This information furnished by Alliance for an Affordable Metro)*

*(This information furnished by Alliance for an Affordable Metro)*

*The printing of this argument does not constitute an endorsement by Clackamas County, nor does the county warrant the accuracy or truth of any statements made in the argument.*

# Canby School District Measure 3-559

REFERRED TO THE PEOPLE BY THE BOARD

## Bonds to increase safety; update, repair schools, classrooms and technology

**Question:** Shall District update safety, technology; improve, repair schools, classrooms; issue \$75 million in bonds; estimated to maintain current tax rate?

If the bonds are approved, they will be payable from taxes on property or property ownership that are not subject to the limits of sections 11 and 11b, Article XI of the Oregon Constitution.

**Summary:** If approved, bond funds are expected to finance following capital costs:

- Improve Health, Safety & Security:
  - New secured entrances, fire safety upgrades
  - Install, upgrade emergency communications, security camera system
  - Air quality improvements: filtration, heating, air conditioning
- Renovate and Repair Aging Schools
  - Electrical, roofing, plumbing improvements
  - LED lighting
  - ADA accessibility upgrades
  - District-wide field and grounds improvements
- Expand Educational Opportunities
  - Grow K-12 hands-on learning, STEM and vocational programs
  - Modernize K-12 classroom technology
- Modernize High School
  - Replace existing "200 Wing", new classrooms, science labs
- Plan for the Future
  - Funds master planning for all district facilities
- Related site improvements, demolition, technology, furnishing, equipment, and issuance costs

District will receive State matching funds of \$4,689,437 if bonds are approved.

Establishes citizen oversight committee to ensure Bond funds used for indicated purposes.

Bonds would mature in not to exceed 20 years and may be issued in multiple series. Are estimated to maintain 2019 tax rate. Actual levy rate may differ due to changes in interest rates and assessed value.

## EXPLANATORY STATEMENT

Canby School District serves over 4,600 students across eight schools.

### Canby schools face challenges:

- School safety, security, and health systems are out of date
- Schools built from 1929 to 1976 are aging and need repairs, updates, and upgrades
- Outdated classrooms, technology, and lack of space for hands-on learning

**The district seeks community support:** The school board seeks voter approval of a \$75 million general obligation bond to make safety and security improvements, upgrade and update building systems, and improve and modernize learning spaces. This bond is projected to maintain existing rates and is not expected to increase property tax rates over what voters paid in 2019.

**Community identified priorities:** An independent school facility evaluation was completed in 2019 and a district bond committee was formed. The community-led bond development committee analyzed the needs of district facilities, narrowed the project list to the highest priorities and presented a plan to the school board.

### The citizens' committee proposed a bond measure to fund the following capital projects:

- **Improve health, safety and security at every school:** Build secure entries, upgrade emergency communication systems, fire safety upgrades and security camera systems. Replace or upgrade air quality systems (HVAC).
- **Renovate and Repair Aging Schools:** Electrical, roofing, plumbing improvements at all school facilities including energy efficiencies and ADA accessibility upgrades along with site improvements, including athletic field upgrades.
- **Expand Education Opportunities:** Grow K-12 hands-on learning, STEM and vocational programs, modernize classroom technology, replace existing "200 Wing" of Canby High School with new classrooms and science labs.
- **Planning for the Future:** Fund master planning for all district facilities.

### Financials:

**Projected to Maintain 2019 Tax Rate:** The bond approved by voters in 2000 will expire in June 2020. If approved, this new measure is estimated to not increase property tax rates over the 2019 rate given the expiration of the 2000 authorization. The total 2019 rate is \$2.14 per \$1,000 of assessed value, which includes bonds expiring in 2020 and 2005 bonds which expire in 2025. Bonds would mature in not to exceed 20 years and may be issued in multiple series. Actual levy rate may differ due to changes in interest rates and assessed value.

**Bond to leverage state matching funds:** The District will receive \$4.7 million in State grants if bonds are approved. If bonds are not approved, these funds will not be received.

**History of accountability:** The last time Canby voters were asked for capital bond funds to upgrade schools was in 2000 and then 2005. These bonds were refinanced multiple times, saving District taxpayers more than \$3 million.

**Bond funds can only be used for voter-approved projects:** Principal amount cannot exceed \$75 million. Law prohibits the use of bond funds for any expense not listed on the ballot.

**Citizen oversight for bond expenditures:** If approved, the school board will appoint a long-term citizen oversight committee to ensure all bond funds are used for the purposes approved by voters.

Submitted by:  
Samuel Goodall, Superintendent  
Canby School District

**NO ARGUMENTS IN OPPOSITION TO THIS  
MEASURE WERE FILED**



## Canby School District Measure 3-559

### ARGUMENT IN FAVOR

On February 26, 2020, the Canby School District Board of Directors voted unanimously to refer a bond to you, the voters of the Canby School District. Our decision was made after 18 months of research, community engagement, and careful fiscal analysis.

If approved, the bond will pay for what we call “warm, safe, and dry” improvements to all of our schools as well as upgrades to classrooms, renovation of the 200 wing of Canby High School, improvements to athletic fields, and modernizing technology infrastructure and equipment.

An important note: the rate is projected to remain the same as we all paid in 2019. This is **not a tax rate increase**. If successful in passing the bond, the Canby School District will also receive an additional \$4.7 million in state grants. This grant is available for the May election only.

Since we voted to move forward to place Measure 3-559 on the ballot, however, things in our community and state have changed dramatically. People are struggling and the future is uncertain. This is not a normal election.

Therefore, I'm submitting this statement to explain the circumstances that lead to this measure being put on the ballot and the reason why: our students and schools need help.

- Schools built as early as 1929 need repairs and replacement of key equipment necessary to keep students safe, including failing infrastructure, heating and cooling systems, and emergency situations such as earthquakes.
- Teachers and other staff need adequate space and technological tools to teach our students.
- Athletic fields need improvements to safely meet the needs of both school and community programs.

Again, we recognize the trying nature of these uncertain times and how things have changed since Measure 3-559 was placed on the ballot. At the same time, student safety and structural stability of our schools is of the utmost importance.

Thank you for your consideration on Measure 3-559.

Sincerely,

Angi Dilkes  
Chair, Canby School Board

*(This information furnished by Angi Dilkes)*

## Canby School District Measure 3-559

### ARGUMENT IN FAVOR

Please support Bond 3-559

As many of you know we are facing a tough time in our city, state and nation. The current events happened after Measure 3-559, Canby's schools' critical bond measure, was placed on the ballot. The current Bond is expiring so this is not an increase in rate from your previous years Property taxes. I hope voters will still support Measure 3-559 even though these are not ideal times. The school board, through outreach with community leaders, have been working over the past year to address some very serious issues as it relates to the Canby schools.

Measure 3-559 addresses several very specific needs:

1. **Improves student and staff safety and security** by creating single points of entry to better monitor traffic into and out of school buildings. **This includes adding cameras and upgrading security features that help keep students and staff safe** in an emergency.
2. **Completes earthquake safety upgrades** to Canby high school and the district's elementary schools, and **retrofit gym spaces to serve as emergency shelters for the community** after a natural disaster like a large earthquake
3. **Modernizes classrooms with important technology upgrades** so they meet modern best practices for learning.
4. **Updates and expands science labs** to ensure class sizes in these labs meet safety standards while allowing students to complete the increased number of lab sciences required to graduate. And it ensures today's students have access to modern technology in the classroom.

Once again these are tough times, but I would ask that you give Bond Measure 3-559 serious consideration, these improvements are needed to keep are students safe, and prepare are classrooms for the future.

Thank you and please support Measure 3-559.

Bill Perry

Canby Resident

*(This information furnished by Bill Perry, Canby Resident)*

*The printing of this argument does not constitute an endorsement by Clackamas County, nor does the county warrant the accuracy or truth of any statements made in the argument.*

# Oregon Primary Election Information

May 19, 2020 Primary Election

All registered voters will receive a ballot based on their political party affiliation as of registration deadline:  
April 28th, 2020.

You must be registered as a Democrat or Republican to be eligible to vote for that party's nominees for partisan offices that will be elected during the November General Election.

If you are registered with a minor party or not affiliated with any political party, you will be eligible to vote only on nonpartisan offices and measures.

New Voters Registration & Change of Political Party Registration deadline:

**April 28, 2020**



## Voter Registration

To Vote in Oregon you must be registered in your county of residence.

To Register you must be:

- A US Citizen
- A resident of Oregon
- At least 16 years of age\*

*\*you will not receive a ballot to vote until the election on/after your 18th birthday.*

### How to Register

1. Online at [oregonvotes.gov](http://oregonvotes.gov)
2. Mail/Deliver a registration form to:  
Clackamas County Elections  
1710 Red Soils Court, Suite 100  
Oregon City, OR 97045

Registration forms are available:

- Online at [oregonvotes.gov](http://oregonvotes.gov)
- Any County Elections office
- Post Offices
- Libraries
- DMV locations

*New Registrations must be postmarked 21 days before Election Day.*

### Required Information to Register

- Full legal name
- Residence Address
- Date of Birth
- Signature

### You Must Update Your Registration if:

1. Your residence or mailing address changes
2. Your name changes
3. You wish to change your party affiliation

# Voting Instructions

## 1. Vote your Official Ballot

Locate the candidate or measure response (Yes or No) of your choice for each contest. To vote, completely darken the rectangle to the left of your choice with black or blue ink. [Figure 1]

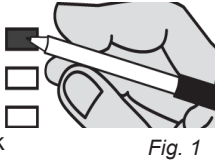


Fig. 1

Remember: If you vote for more than the number of candidates allowed for an office, or you vote both Yes and No on a measure, it is called an overvote and your vote for the candidate or measure will not count. [Figure 2]



Fig. 2

You are not required to vote on everything. Your ballot will still be counted as cast and your votes for other contests will be counted.

## 2. Review your Official Ballot

Ensure you have correctly marked your choice for each contest. Your official ballot may contain contests printed on both front and back. Remember to review both sides!

If you lose your ballot, or it is spoiled in any way, contact the Clackamas County Elections Division at **503.655.8510** to request a replacement ballot.

## 3. Return your Official Ballot

Place your voted Official Ballot in the envelope and sign the Voter's Statement. If you forget your secrecy sleeve, it is not a problem.

**Remember:** Read and sign the Voter's Statement on the Return Ballot Envelope. **Your ballot cannot be counted if the Return Ballot Envelope is not signed.**

**By Mail:** **Postage is no longer required** to mail your Return Ballot Envelope. Please mail it as soon as possible; it must arrive at Clackamas County Elections Division no later than 8:00 p.m. on Tuesday, May 19, 2020. **Remember, the postmark does not count!**

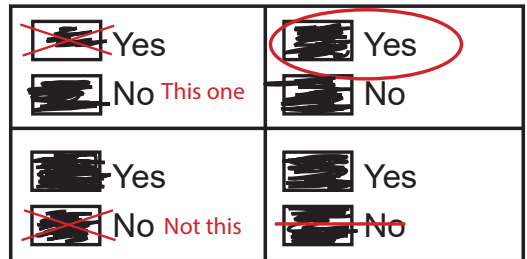
**In Person:** Deliver the signed and sealed Return Ballot Envelope to any official ballot drop site (see list on page C-52) no later than 8:00 p.m. on Tuesday, May 19, 2020.

## Did you make a mistake?

Don't tear up your ballot yet. You can fix it!

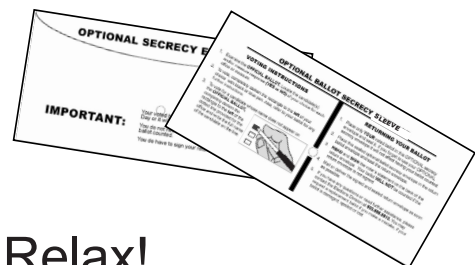
Please do NOT use corrective tape or white out.

Make your choice obvious so that election officials can count it correctly. Please review the examples of acceptable corrections.



For further assistance, contact our office at 503.655.8510.

## Forgot your optional secrecy sleeve?



## Relax!

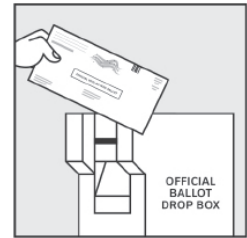
Election workers will preserve the privacy of your ballot if you forget to enclose the secrecy sleeve and your ballot will still count.

# Official Ballot Drop Sites

All drop sites in Clackamas County are available to the public 24 hours a day from April 29, 2020 until 8 pm on Election Day.

Please Note: Gladstone's location has changed.

\*Drive-up ballot drop access



## Clackamas County Elections\*

1710 Red Soils Ct.  
Oregon City, OR 97045

## Boring - Clackamas County Bank\*

28500 SE Hwy 212  
Boring, OR 97009

## Canby Civic Building

222 NE 2nd Ave  
Canby, OR 97013

## Canby - Arneson Garden\*

249 S Sequoia Parkway  
Canby, OR 97013

## Clackamas CC - Harmony

7738 SE Harmony Rd  
Milwaukie, OR 97222

## ColtonTel\*

20983 S Hwy 211  
Colton, OR 97017

## Damascus Square\*

19830-20000 SE Hwy 212  
Damascus, OR 97089

## Estacada City Hall

475 SE Main St  
Estacada, OR 97023

## Estacada Public Library\*

825 NW Wade St  
Estacada, OR 97023

## Gladstone Civic Center

--New Location--  
18505 Portland Avenue  
Gladstone, OR 97027

## Happy Valley City Hall\*

16000 SE Misty Dr  
Happy Valley, OR 97086

## Happy Valley Library

13793 SE Sieben Park Way  
Happy Valley, OR 97086

## Hoodland Public Library

24525 E Welches Rd  
Welches, OR 97067

## Lake Oswego City Hall\*

380 A Ave  
Lake Oswego, OR 97034

## Lake Oswego - Westlake Park\*

14165 Bunick Dr  
Lake Oswego, OR 97035

## Milwaukie City Hall

10722 SE Main St  
Milwaukie, OR 97222

## Milwaukie

**Public Safety Building**  
3200 SE Harrison St  
Milwaukie, OR 97222

## Molalla Public Library\*

201 E 5th Street  
Molalla, OR 97038

## Oak Lodge Library

16201 SE McLoughlin Blvd  
Milwaukie, OR 97267

## Oregon City - City Hall\*

625 Center St  
Oregon City, OR 97045

## Sandy City Hall

39250 Pioneer Blvd  
Sandy, OR 97055  
*Back side of City Hall*

## Sandy Public Library\*

38980 Proctor Blvd  
Sandy, OR 97055

## West Linn City Hall

22500 Salamo Rd  
West Linn, OR 97068

## West Linn Public Library

1595 Burns St  
West Linn, OR 97068

## Wilsonville City Hall\*

29799 Town Center Loop E  
Wilsonville, OR 97070

Scan this QR to view all Clackamas  
County Drop Sites on Google Maps



Your voted ballot may be dropped off at any official drop site in the State. The Secretary of State's drop box locator is:  
[www.oregonvotes.gov/dropbox](http://www.oregonvotes.gov/dropbox)