

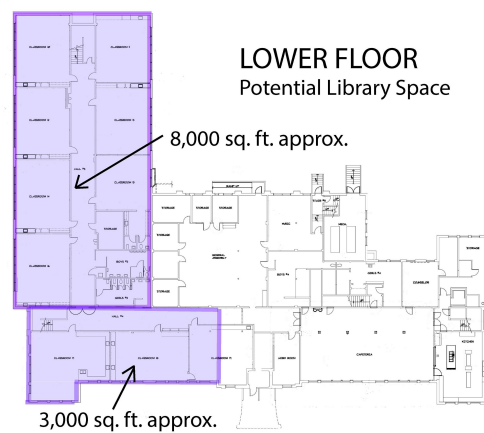
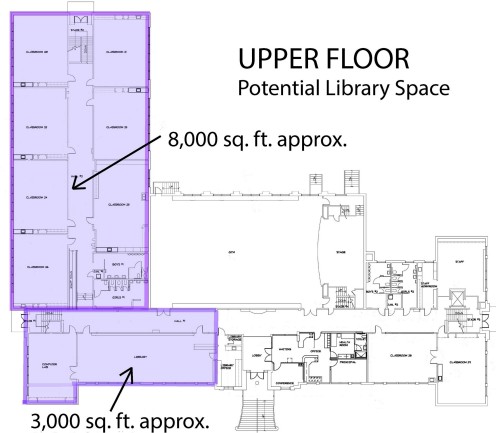
CONCORD SCHOOL TWO STORY LIBRARY CONCEPT



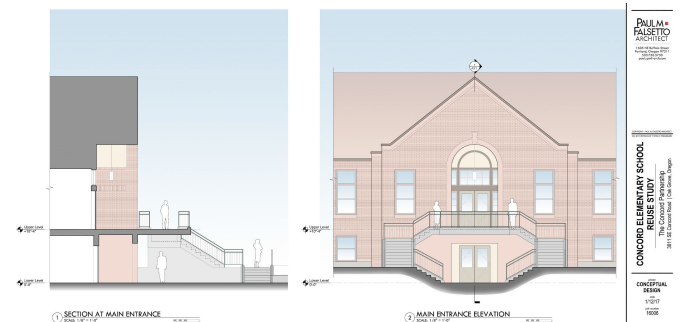
Submitted by The Concord Partnership (TCP), February 2018

TCP's studies supporting reuse of Concord School considered several concepts for a library. Only one concept, for a library on the lower floor, was illustrated in the resulting report, "Concord School Reuse Study" by Architect Paul Falsetto.

The purpose of this document is to prompt further study of a two-story library option that would occupy the north wing addition to the building and the northwest corner of the original building. Like other options, interior remodeling would include removal or relocation of walls to achieve desired spaciousness and natural lighting and support library operations. (Diagrams below simply show potential library space overlaid on existing upper and lower floor plans.)

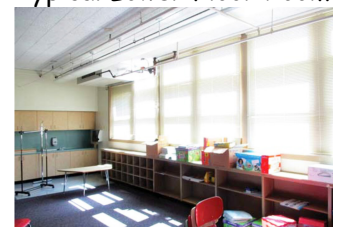


In studies of reuse options, the building's prominent and inviting west entrance was a key feature guiding floor plan designs. This main entrance is outdated with regard to accessibility; it only serves the upper floor, while the north and south entrances serve both floors with split entry stairways and an elevator at the south entry. The architect's remodel design of this main entrance (shown below) would provide entry at the lower level to a lobby with a new elevator, which could serve both levels of a two-story library.



Concerns about variable natural light would be alleviated with this two-story concept. Typical upper and lower floor window light in this part of the building is shown below.

Typical Upper Floor Room Typical Lower Floor Room



(Photos by Paul Falsetto)



Building north wing, north side. North entrance at far right.



Northwest building corner; main entrance at far right; north entrance at far left.



Building north wing, south side.

This concept could provide up to 22,000 sq. ft. of library space while retaining other key features of the building including the gym, stage and green room, cafeteria and kitchen, and community room space both within and outside the library footprint; with leftover space for other compatible building uses. In addition, the land area available for improvement as public park and playground space, community gardens and other desirable uses of the grounds, could be maximized with the library and other indoor uses creatively fitted to the existing building.

